

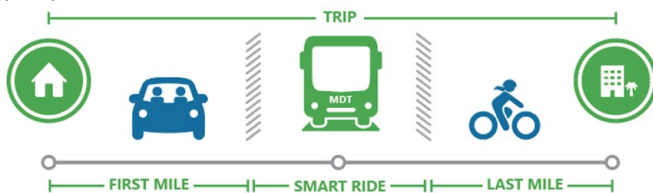
# First/Last Mile Connections to the SMART Plan

City of Miami Beach TMP Update



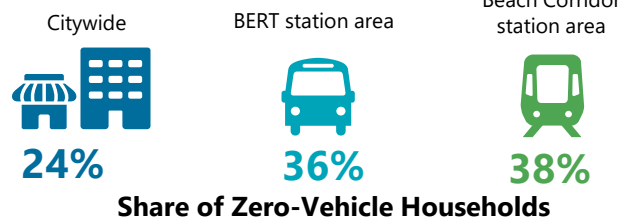
## WHY FOCUS ON FIRST AND LAST MILE

- Part of City's Transportation Master Plan (TMP)
- Define strategies, policies, and station-area initiatives to improve foot, bike, and transit access to Miami Beach SMART stations.
- Safe, accessible travel to/from transportation hubs
- Provide a range of transportation choices to serve as many people as feasible.



## EXISTING CONDITIONS

- Good sidewalk and bikeway network
- Higher concentration of zero-vehicle households around SMART stops
- Limited east-west bikeway connectivity in South Beach
- Low-frequency local circulator
- Mismatch in transit operating hours
- Flexible on-demand service



## SYSTEMWIDE, PROGRAMMATIC, AND POLICY PROJECTS

### 1. IMPROVE TROLLEY FREQUENCY

- Free, local circulator
- Connects to all SMART stops in the city
- Serves lower-income communities
- Pre-pandemic ridership shows potential of improved service levels
- Every 15 minutes or less is the ideal frequency



### 2. WASHINGTON AND 17<sup>TH</sup> STREET

- Largest transit hub in the city, by ridership
- Already along one BERT route; minimal deviation for another one
- Key connection to DTPW and CMB transit services



### 3. ON DEMAND TRANSIT

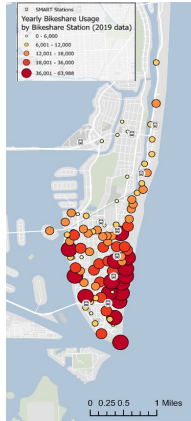
- Important first/last mile connection for people with limited mobility living in low-density areas
- Provider must ensure >15-minute wait times
- Service hours of on-demand transit should match those of SMART services



# SYSTEMWIDE, PROGRAMMATIC, AND POLICY PROJECTS

## 4. ENHANCED BIKESHARE

- Well-established mode of transportation
- Co-locate bikeshare stations and SMART stops
- Joint transit+bikeshare pass/subsidy
- Watch out for balancing issues



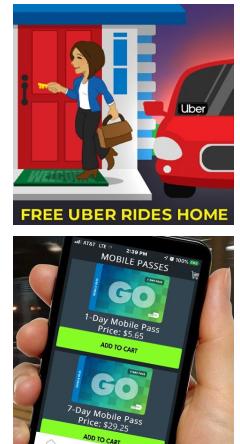
## 5. MARKETING TO TOURISTS

- Car-Free, Care-Free!
- Market the Beach Corridor and Miami Beach Trolley to tourists
- Parking garages as mobility hubs



## 6. TRANSIT ACCESS PROGRAMS

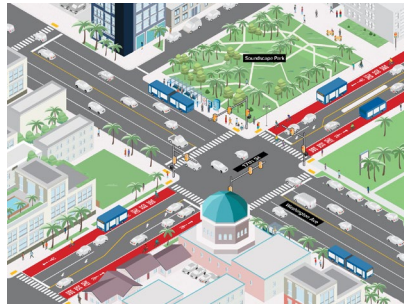
- Discounts and fare-free programs
- Guaranteed Ride Home
- Good marketing to capture people adjusting to the new transportation developments in the city.



## STOP SPECIFIC PROJECTS

### WASHINGTON & LINCOLN

- Designated bus curb space.
- 17th Street bus-bike study.
- Assess bikeshare use
- Convention Center directions
- Traffic calming 17th Street and Washington Avenue midblock crossing



### 5TH & LENOX

- Protected bike lanes on West Ave.
- Continue 6th Street greenway
- Implement Lenox Avenue Sharrows
- Long-term bike storage
- Assess bikeshare use



## WHAT ABOUT MICROMOBILITY?

- Miami Beach currently bans shared mobility rentals.
- Micromobility is gaining popularity nationwide.
- Could become part of the SMART first/last mile toolset.
- If prohibition is abolished, micromobility must be regulated.
- Drop-off zones for riders to leave micromobility devices



- Milos Majstorovic, MSCE, PE
- MilosMajstorovic@miamibeachfl.gov
- June 2022