



2

0

0

0

Miami Beach Intermodal Feasibility Study

Submitted to

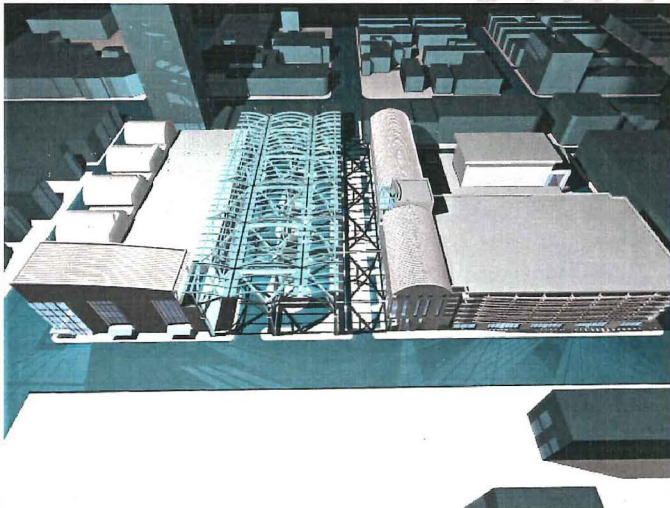
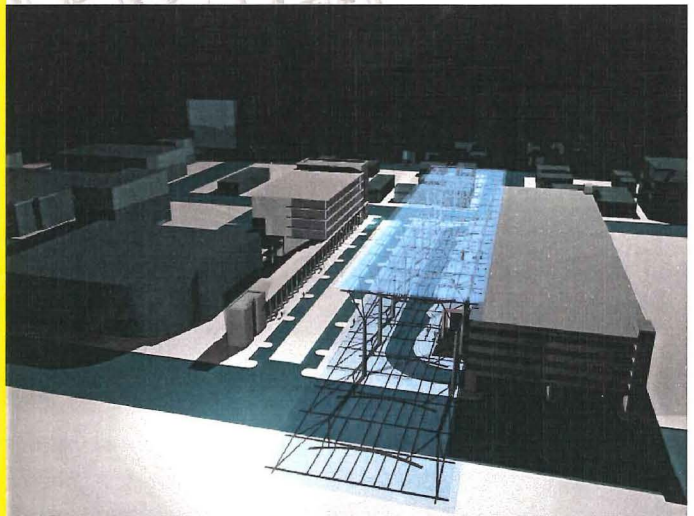
CITY OF MIAMI BEACH

Prepared By

CORRADINO

LAMBERT ADVISORY

Parsons Brinckerhoff
Quade Douglas



COURIER WORK ORDER

FROM: (Dept., Div.) <i>Trans/Courier</i>	BUDGET CODE: <i>02110</i>	TELEPHONE: <i>1511</i>	DATE: <i>11/17/10</i>
TYPE OF DOCUMENT: <i>Transmittal</i>		AUTHORIZED BY: <i>J. [Signature]</i>	

DELIVER TO:

Addressee's Name

Phone No.

Addressee's Address

RECEIPT IS HEREBY ACKNOWLEDGED FOR MATERIAL RECEIVED FROM THE CITY OF MIAMI BEACH:

Date/Time

Recipient's Signature

Courier's Signature

Recipient's Name Printed

Courier's Name Printed

===== DO NOT WRITE IN THIS AREA. FOR OFFICIAL USE ONLY =====

TIME ORDER RECEIVED: _____

SHIPPED VIA: ☐ INTERNAL ☐ EXTERNAL

ORDER PHONED IN: _____

CONFIRMATION NO. _____

PICKED UP/DELIVERED: _____

CFNT. SERV. - White

RECEIPT - Canary

COST _____
DEPT. COPY - Pink

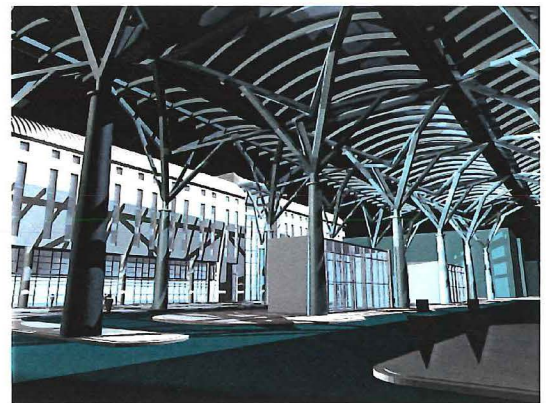
Project Descriptions & Design Issues:

The two schemes proposed in the feasibility study address important civic and urban issues relating to public space. The main terminal's open floor plan will create a destination where passengers become as much of an attraction as the terminal itself. As a result, the terminal will serve dual roles as a public gathering space and an intermodal transfer station to eventually become an identifiable point of reference and landmark in Miami Beach.

The Intermodal Center program will include a light maintenance component, storage for 15 buses, and passenger amenities, as well as a dispatch room, employee restrooms, common rooms and changing areas. Heavy maintenance will occur at the Dade / Pinetree site which currently functions as the city's maintenance yard.

17th Street and Washington Avenue Site

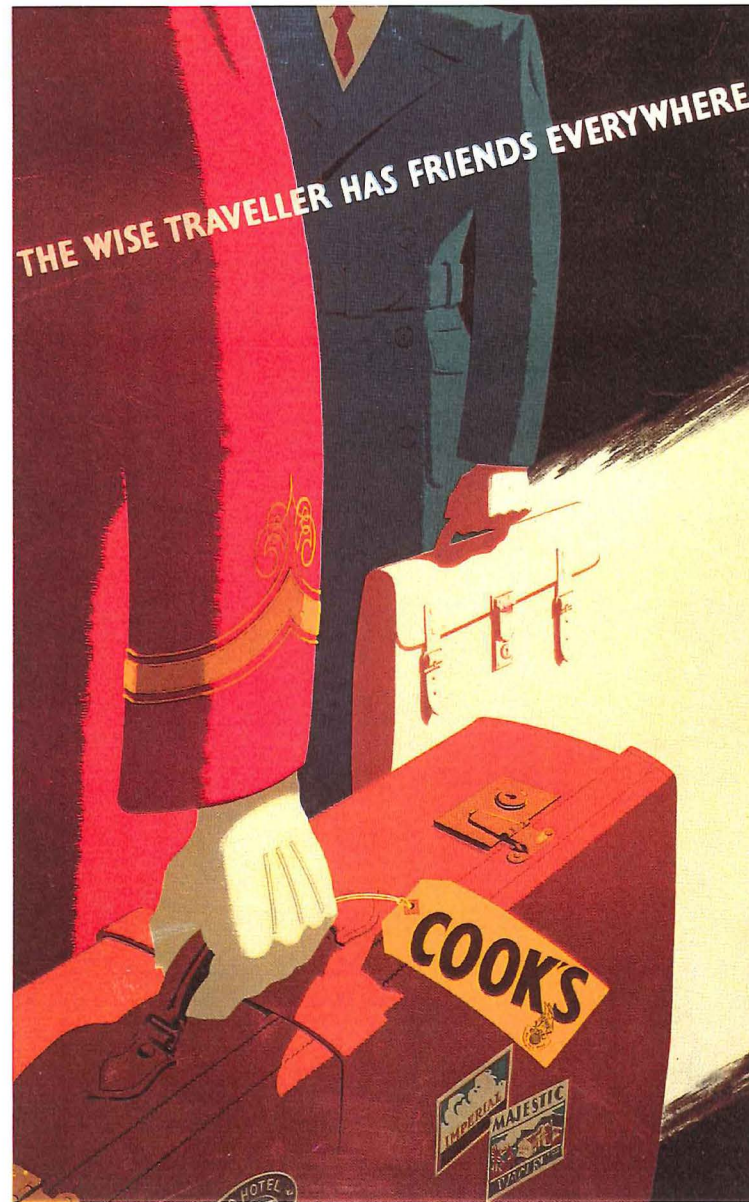
The 17th Street and Washington Avenue site is bound on the north by 17th Street; on the east by Washington Avenue; on the west by Pennsylvania Avenue and on the south by Lincoln Lane. The site accommodates a variety of different uses in addition to the Intermodal Center. These uses include ground level retail along Washington Avenue and 17th Street, and parking for 1600 cars. The north-south orientation of the terminal building reinforces the pedestrian connection between 17th Street and Lincoln Road. The link is created by enhancing Drexel Avenue as a pedestrian-friendly through street that addresses both the main terminal to the east and a linear mixed-use building to the west.



Convention Center Site

The Convention Center / City Hall site is bound on the north by the current Convention Center parking lot; on the west by a row of residential buildings; on the east by the Convention Center and on the south by City Hall and its parking lot. The main terminal is located between Meridian Avenue and Convention Center Drive. This east-west orientation will create a public street to directly link the intermodal facility and City Hall. This newly reclaimed public thoroughfare will enhance both the pedestrian and vehicular experience of what could be an emerging civic center. The project also includes parking spaces for 1000 cars and accommodates the City Hall expansion.





CORRADINO

TRANSPORTATION AND PUBLIC THEATRE



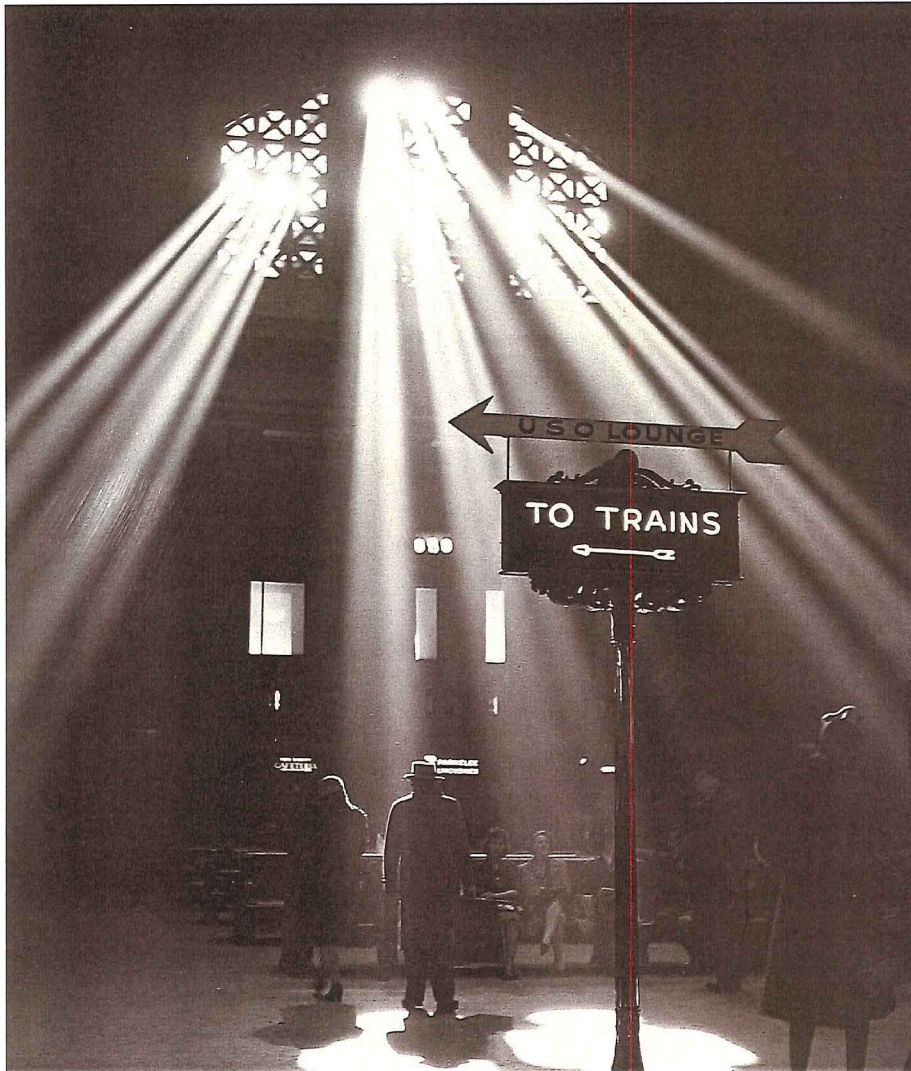
THE MAIN TERMINAL AT THE
TURN OF THE CENTURY

A SCENE FROM INDISCRETION
OF AN AMERICAN WIFE, 1953
WITH MONTGOMERY CLIFT AND
JENNIFER JONES SHOT IN
TERMINI STATION ROME



CORRADINO

A SENSE OF ATMOSPHERE



CHICAGO UNION STATION , 1916-25



STUTTGART STATION , 1911



CORRADINO

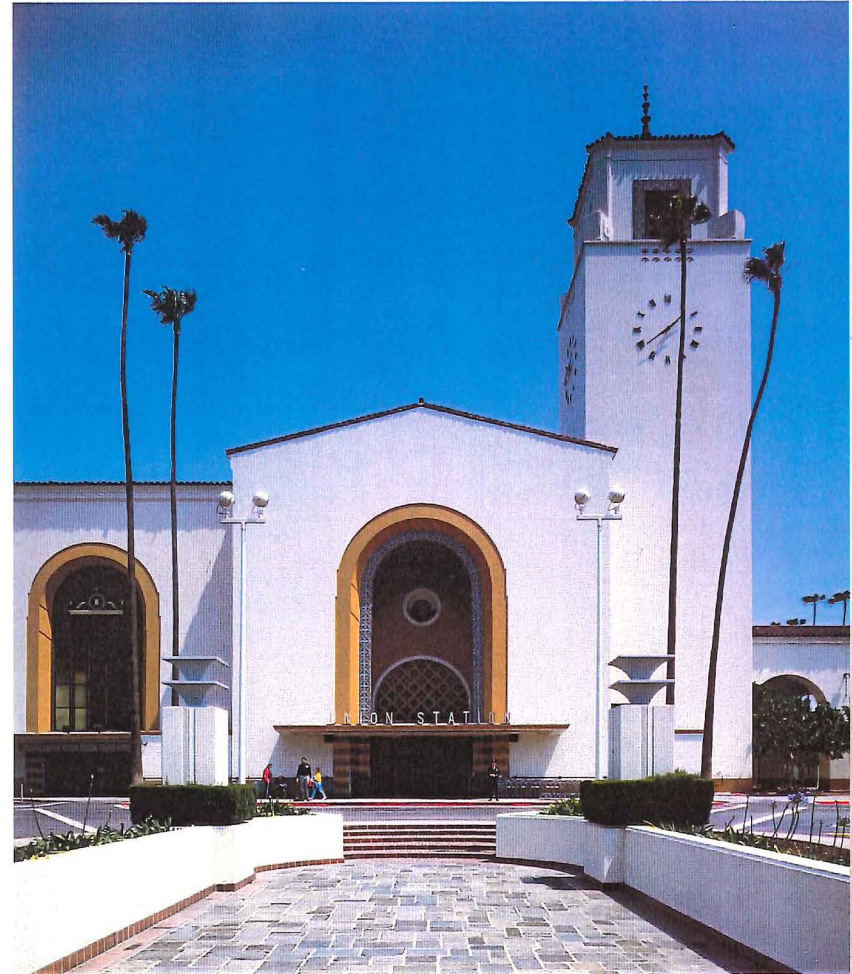
INTERMODAL CENTER AS AN EXAMPLE OF LOCAL ARCHITECTURAL TRENDS AND TRADITIONS



UNION STATION CINCINNATI , 1928

-ART DECO INSPIRED

-MONUMENTAL SCALE



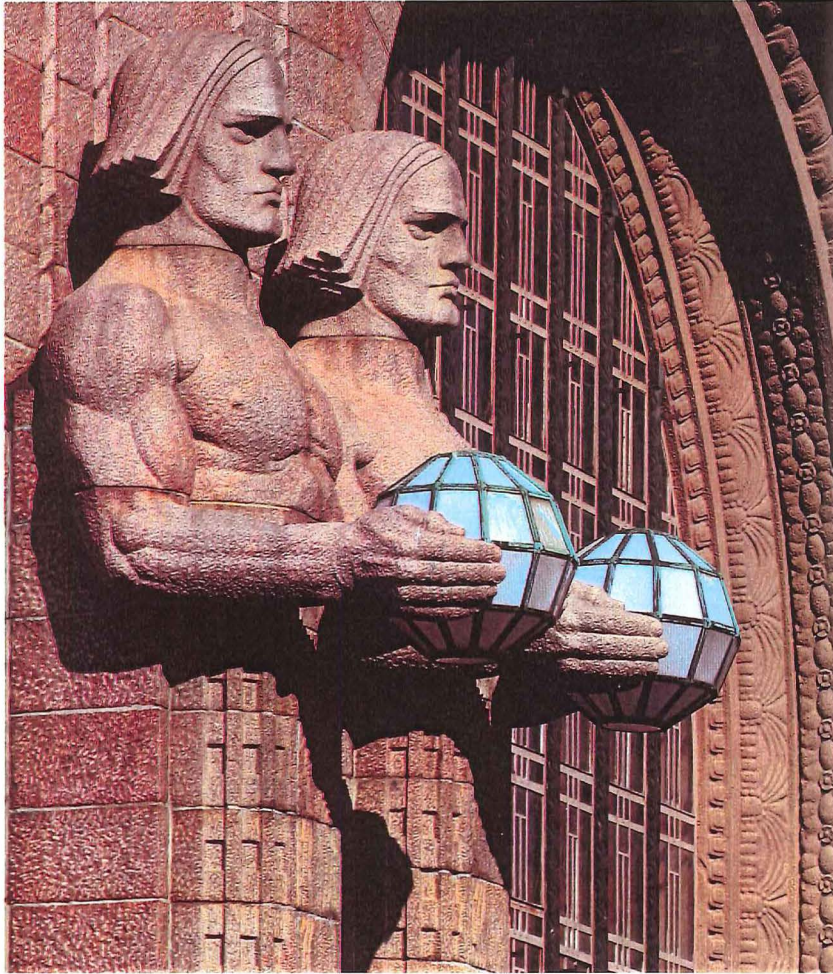
UNION STATION LOS ANGELES , 1934

-ARCHITECTURAL IDIOM BASED ON
LOCAL TRADITIONS

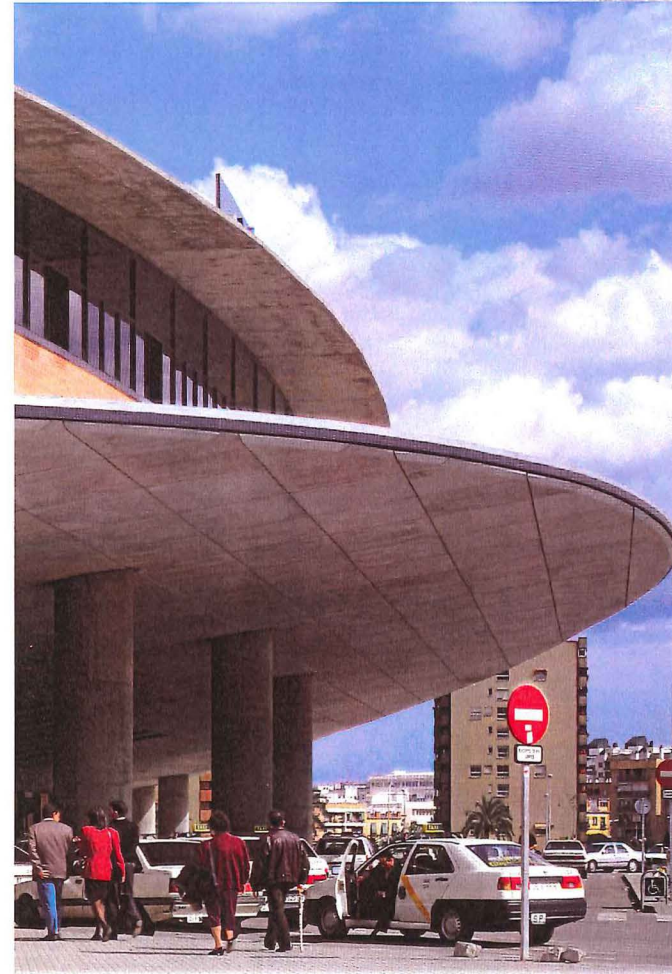
-HUMAN SCALE

CORRADINO

THE FRONT DOOR TO THE CITY



HELSINKI STATION , 1910



SANTA JUSTA STATION, SEVILLE ,
1992



CORRADINO

CONTRIBUTION TO PUBLIC LIFE



PENN STATION , NYC, 1910
-CENTER OF CIVIC PRIDE

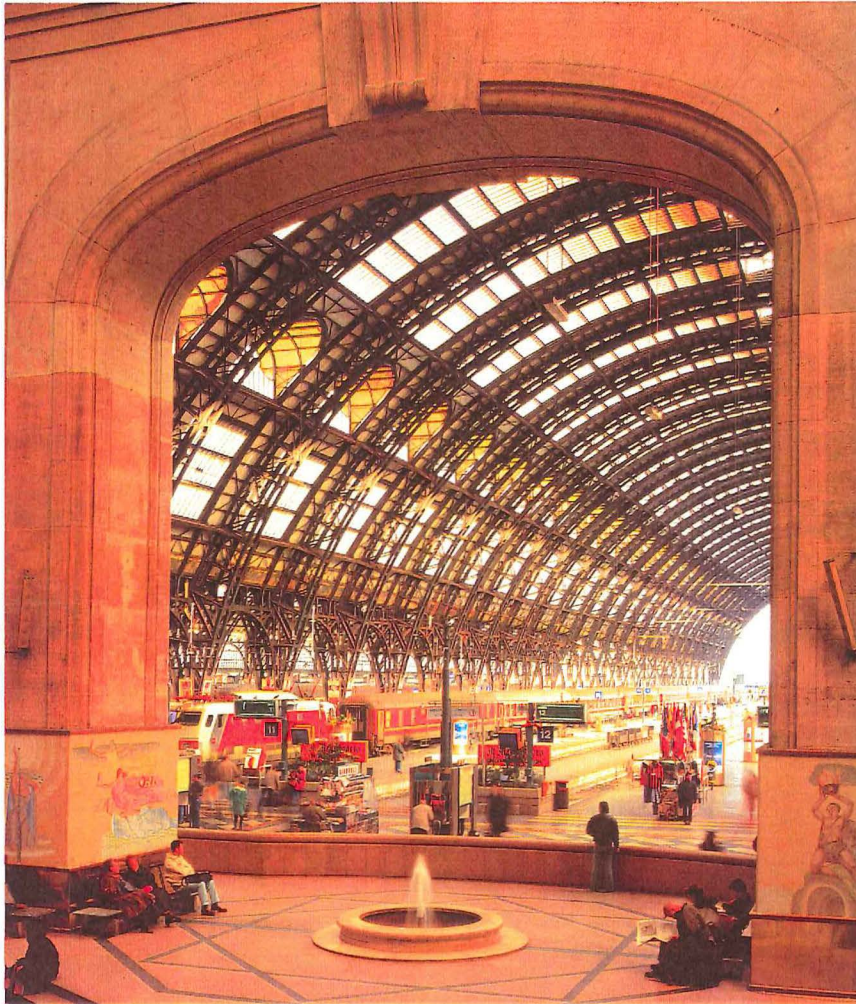


AMSTEL STATION, AMSTERDAM ,
1940
-USE OF PUBLIC ART



CORRADINO

MONUMENTAL SCALE



MILAN STATION, MAIN TERMINAL

-MONUMENTAL SCALE

-QUALITY OF LIGHT



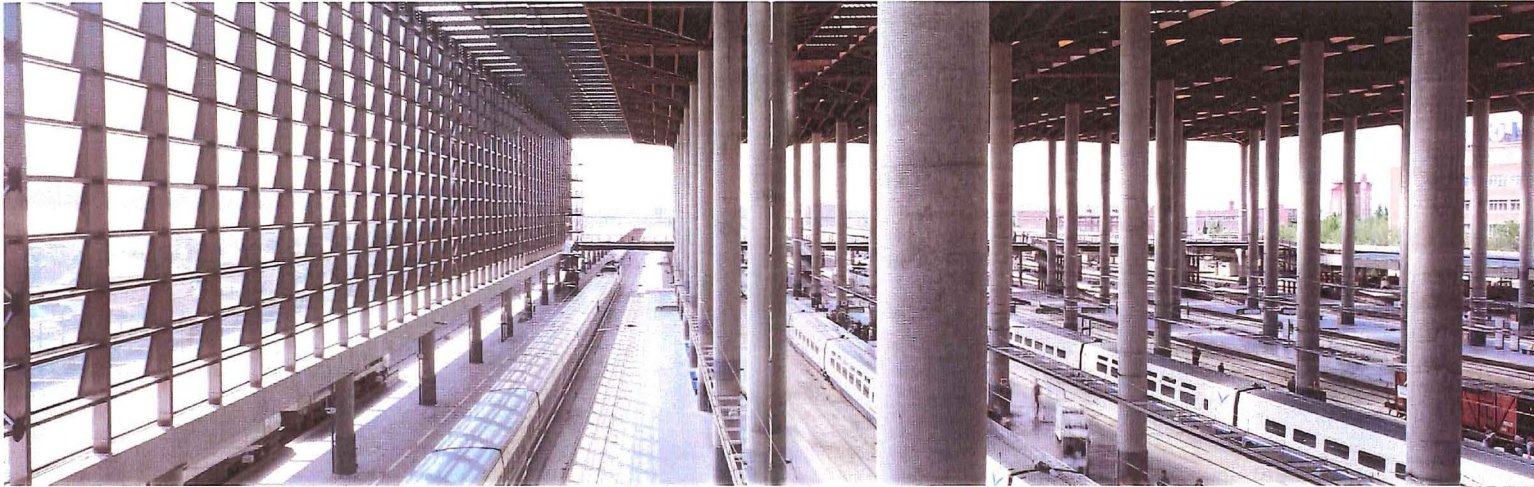
COLOGNE STATION , REBUILT 1925

-EXPRESSION OF STRUCTURAL
ELEMENTS



CORRADINO

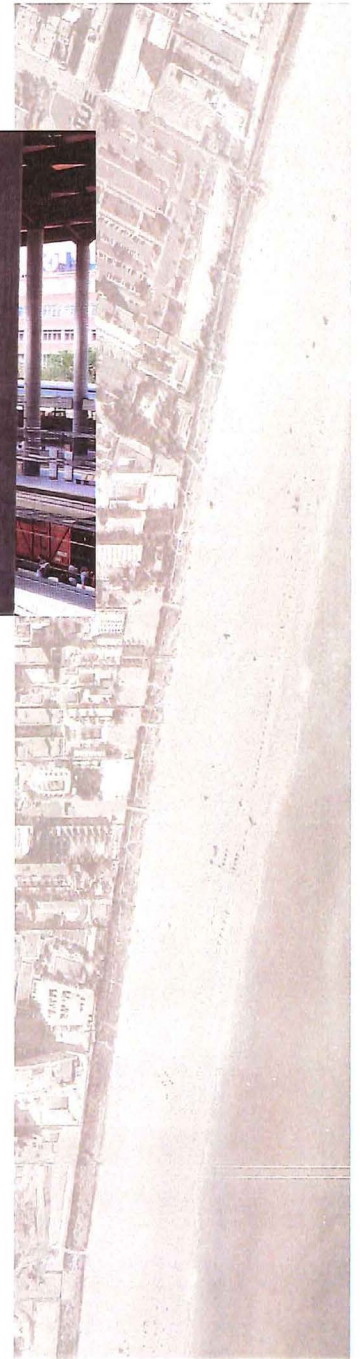
THE PUBLIC ROOM



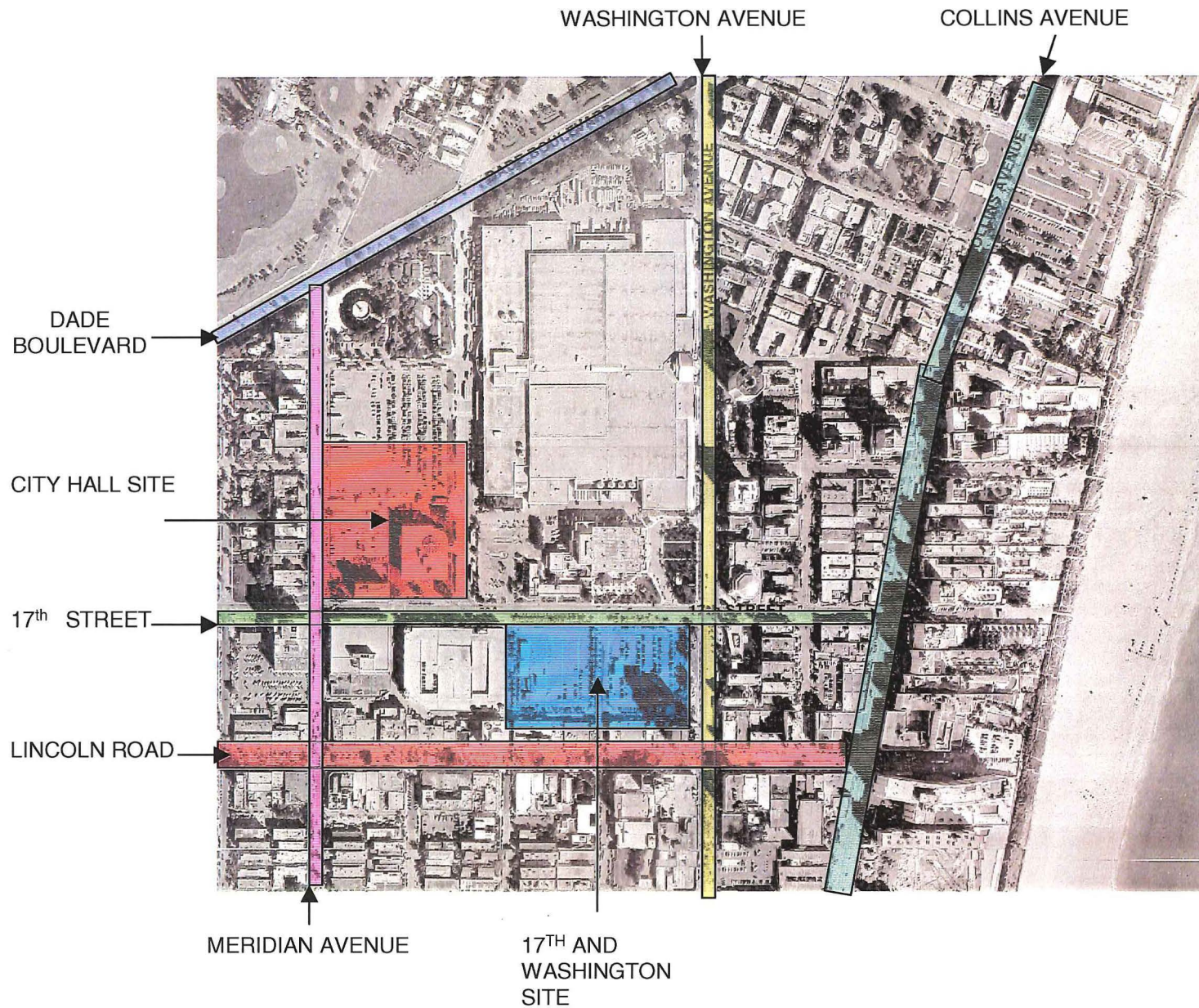
ATOCHA TERMINAL , MADRID



GARE DU NORD TERMINAL ,1857-66
- THR MAIN TERMINAL AS A PUBLIC
ROOM WITHIN THE CITY

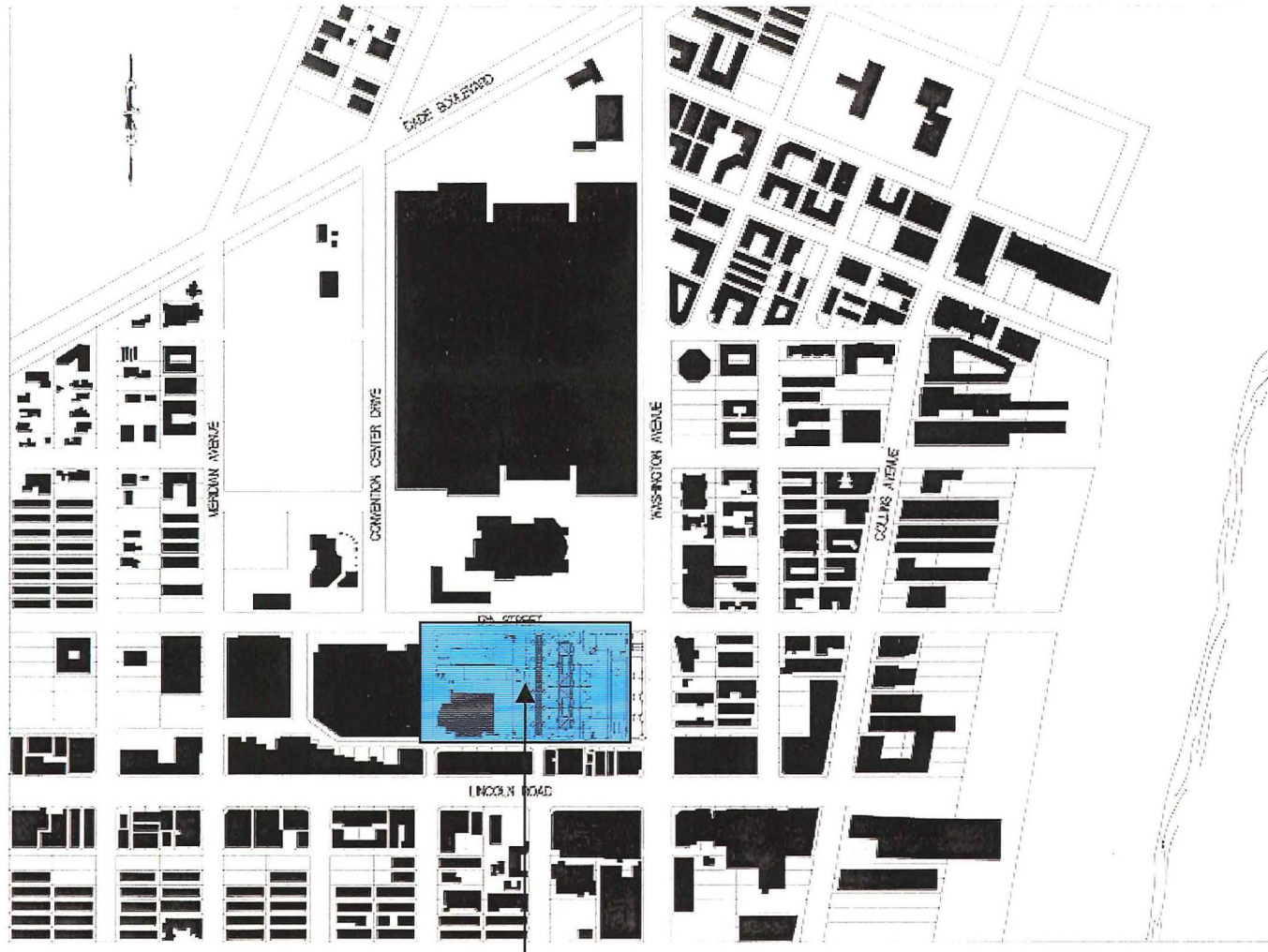


CORRADINO



CORRADINO

17TH STREET AND WASHINGTON

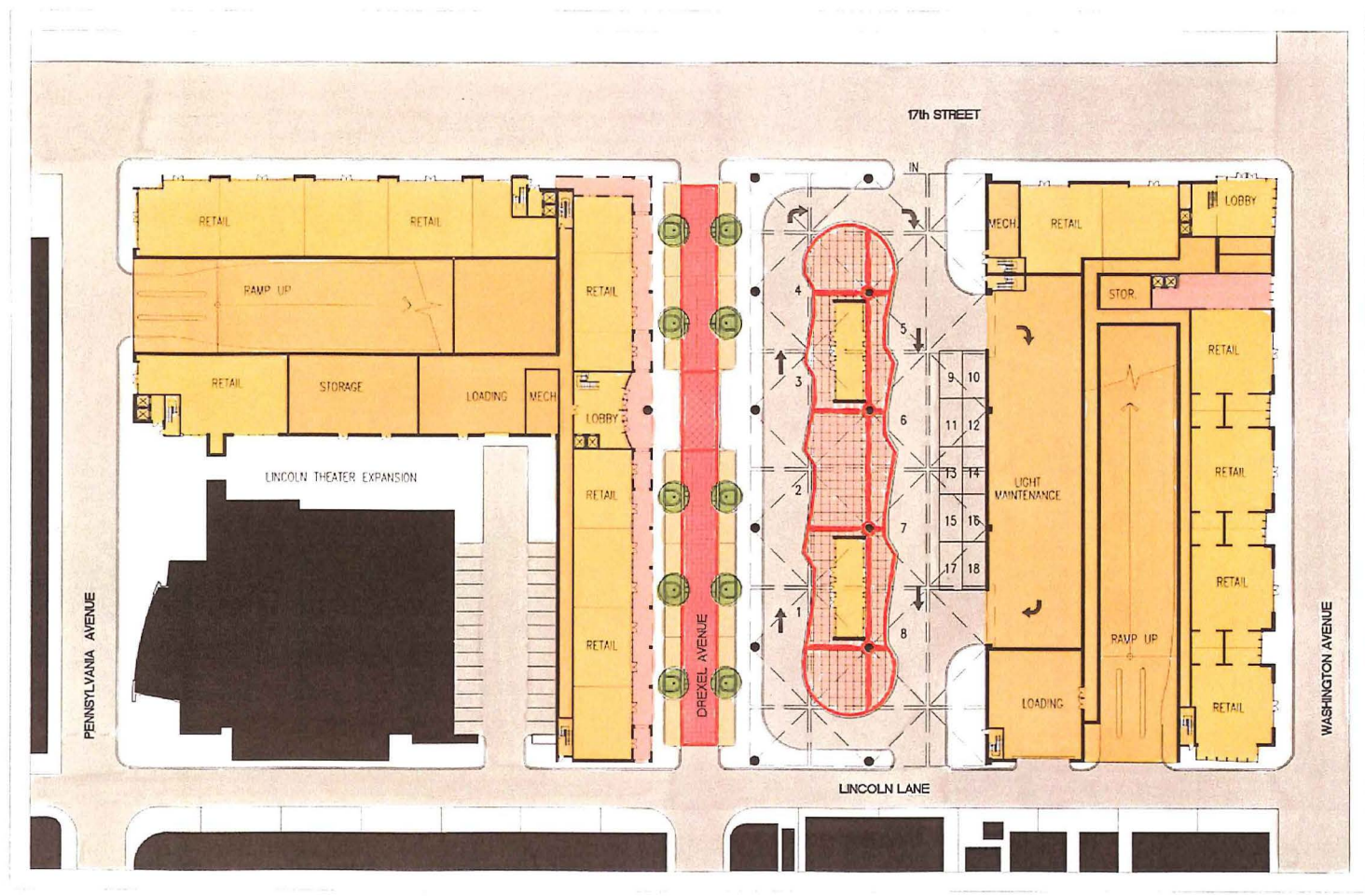


17TH AND
WASHINGTON

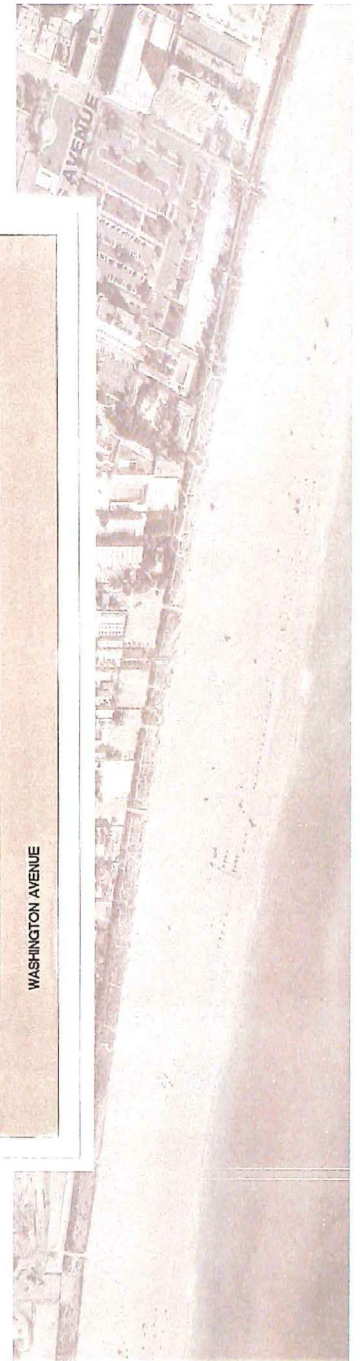


CORRADINO

17TH STREET AND WASHINGTON

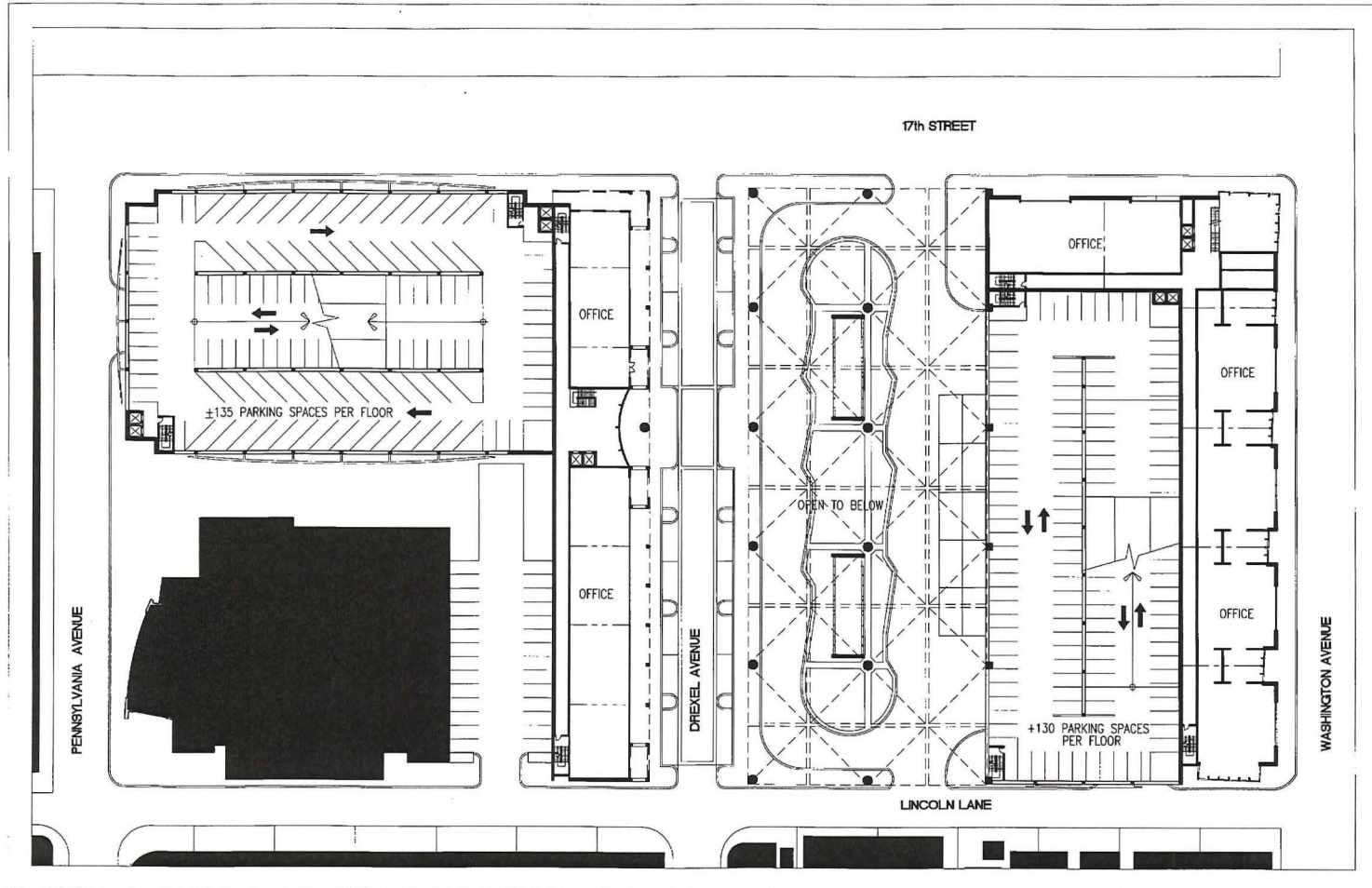


GROUND FLOOR



CORRADINO

17th STREET AND WASHINGTON



SECOND FLOOR

17th STREET AND WASHINGTON

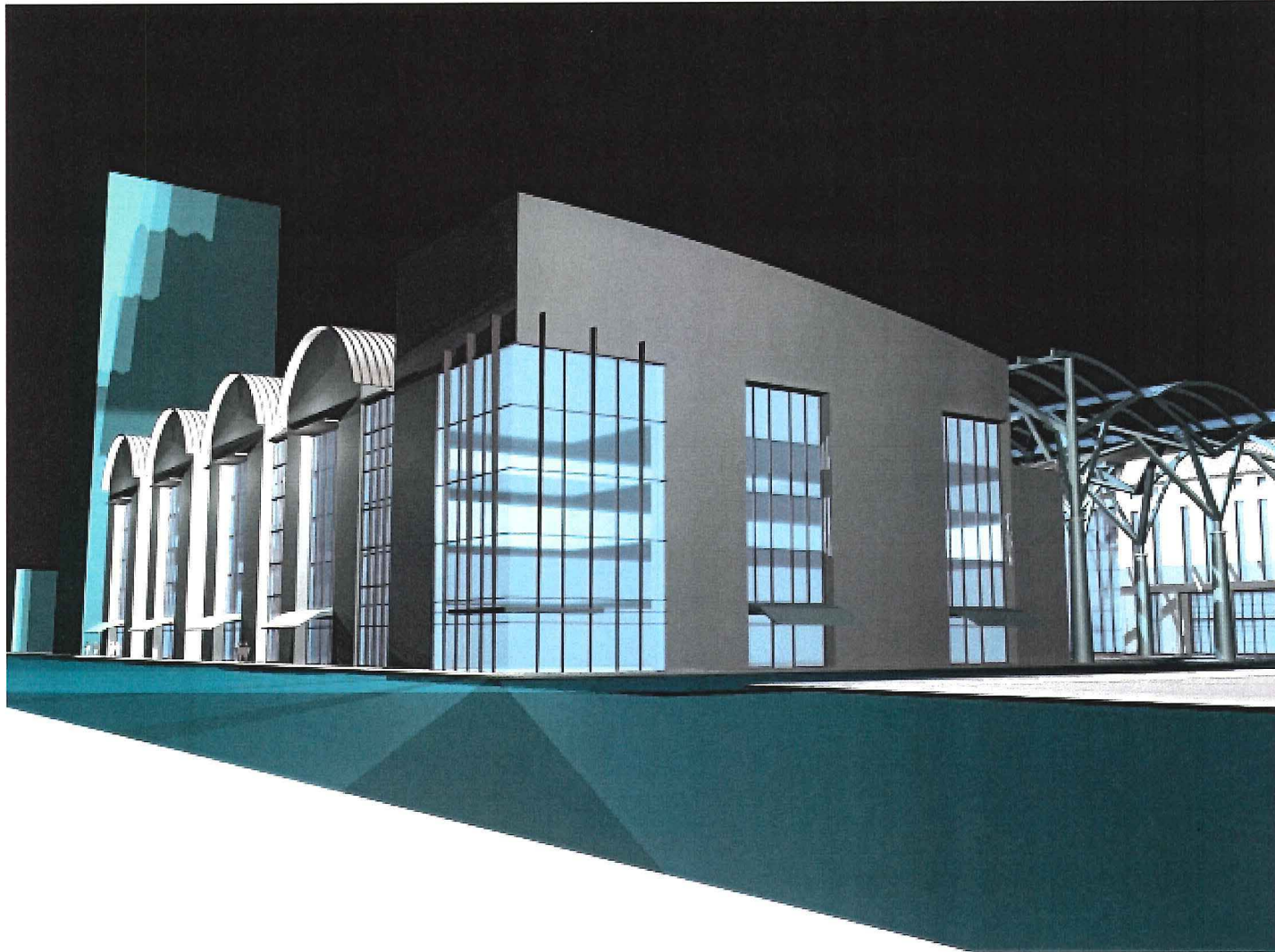


VIEW OF MAIN TERMINAL LOOKING SOUTH

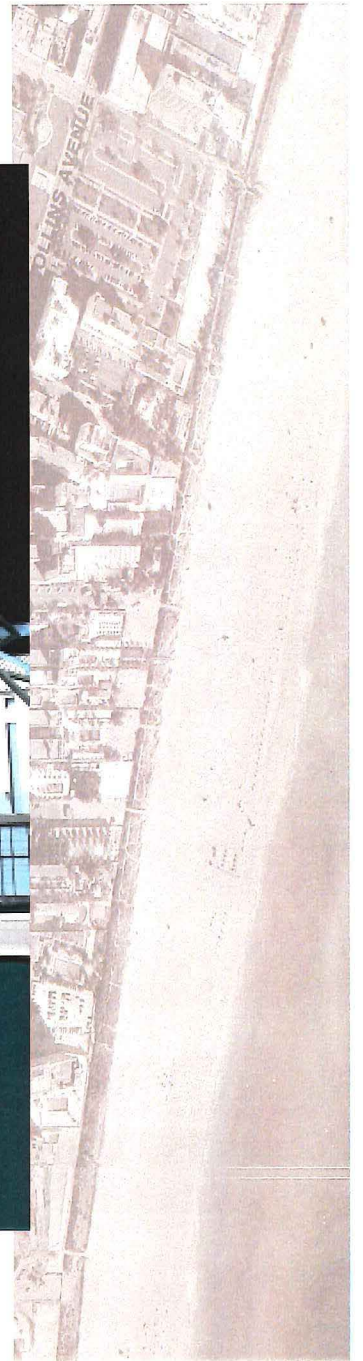


CORRADINO

17th STREET AND WASHINGTON

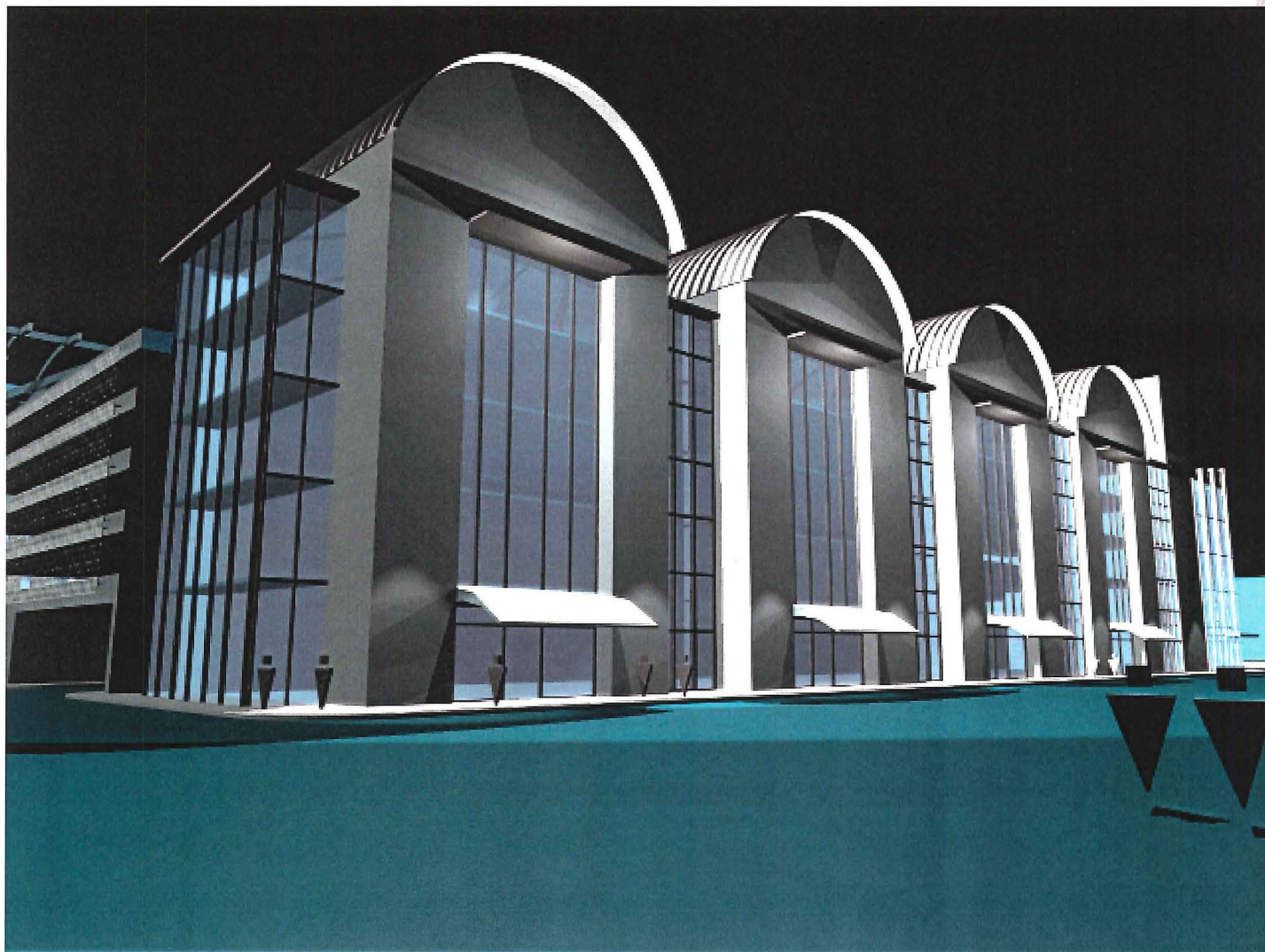


STREET LEVEL VIEW LOOKING SOUTH WEST

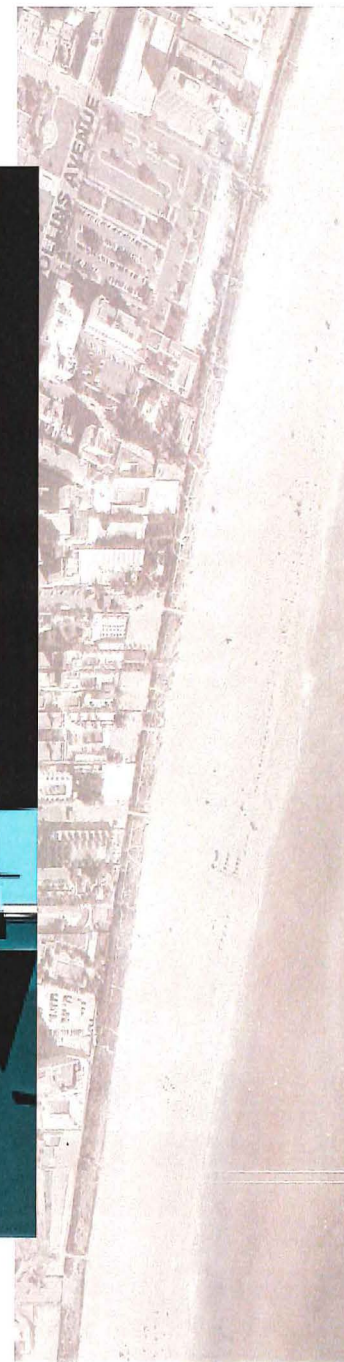


CORRADINO

17th STREET AND WASHINGTON

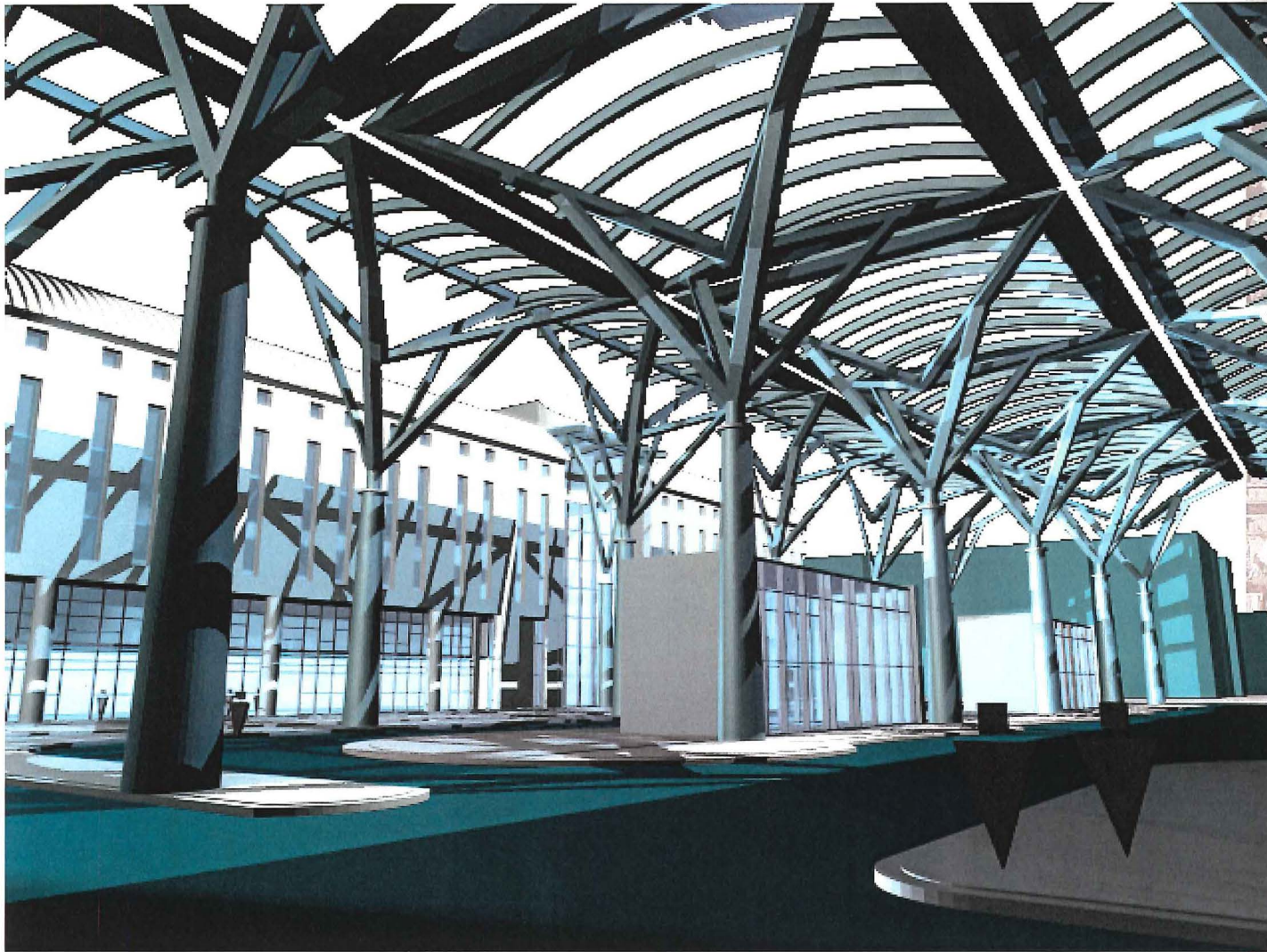


WASHINGTON AVENUE VIEW LOOKING NORTH WEST



CORRADINO

17th STREET AND WASHINGTON

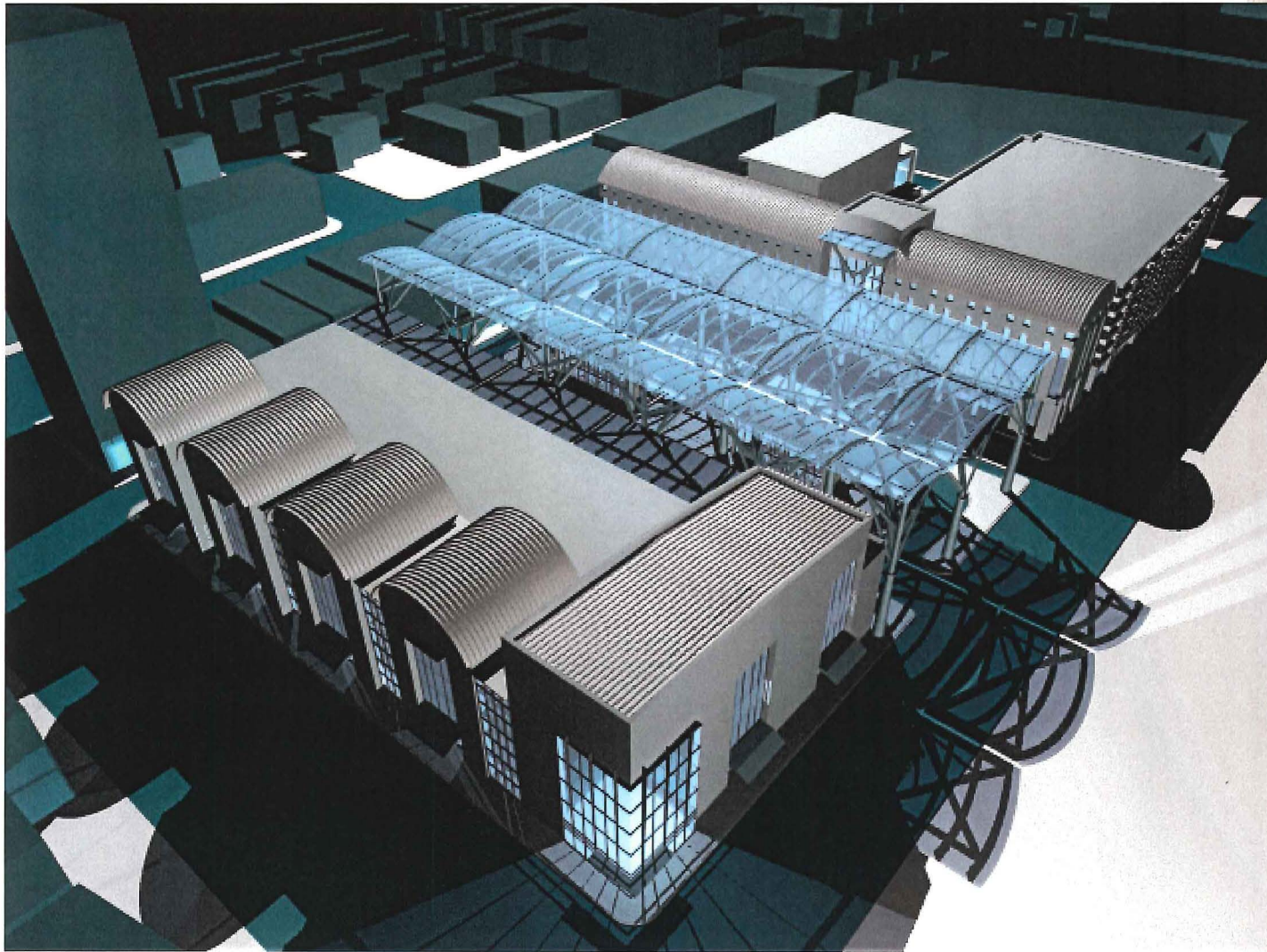


VIEW WITHIN MAIN TERMINAL LOOKING NORTH



CORRADINO

17TH STREET AND WASHINGTON

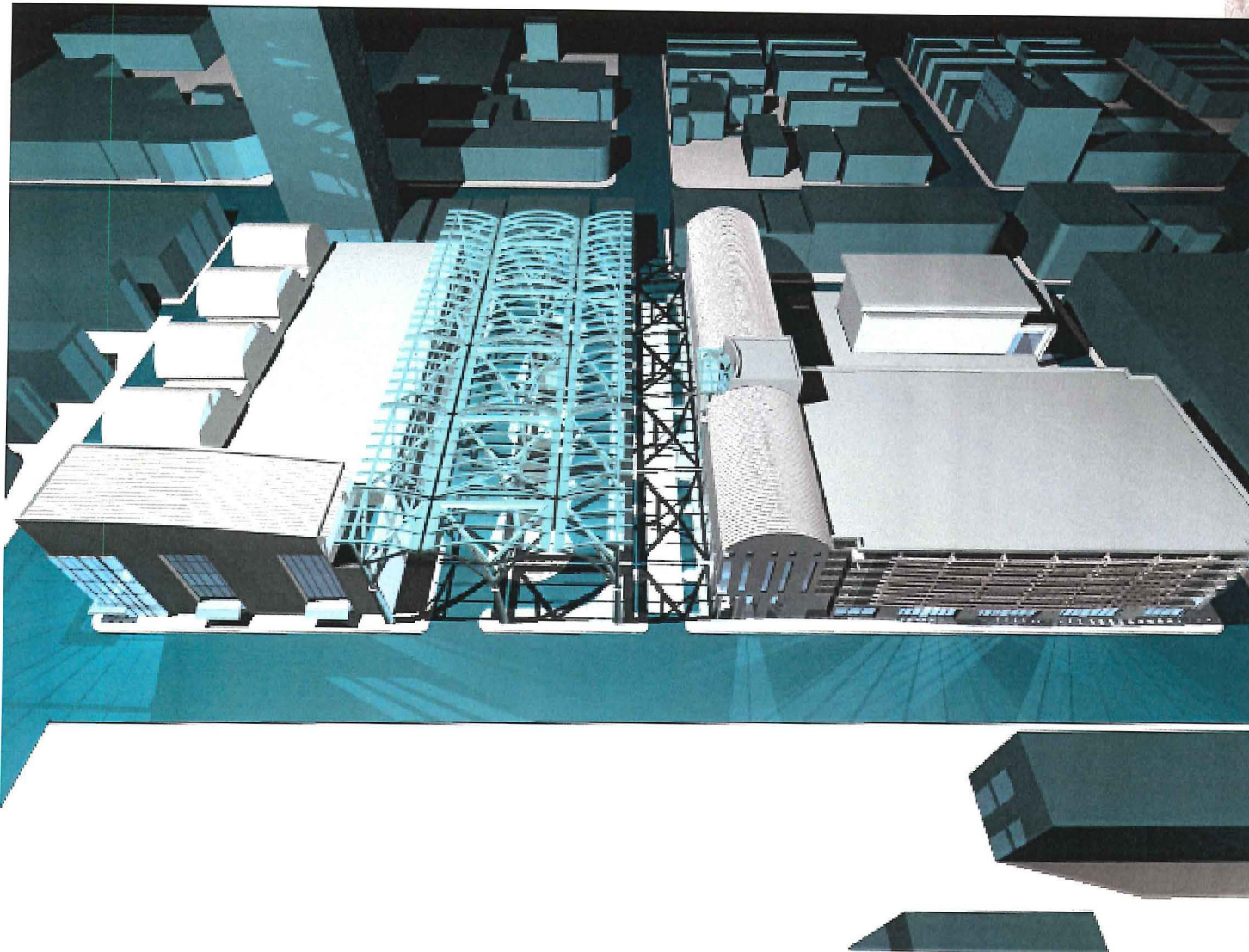


AERIAL VIEW LOOKING SOUTH-WEST



CORRADINO

17TH STREET AND WASHINGTON

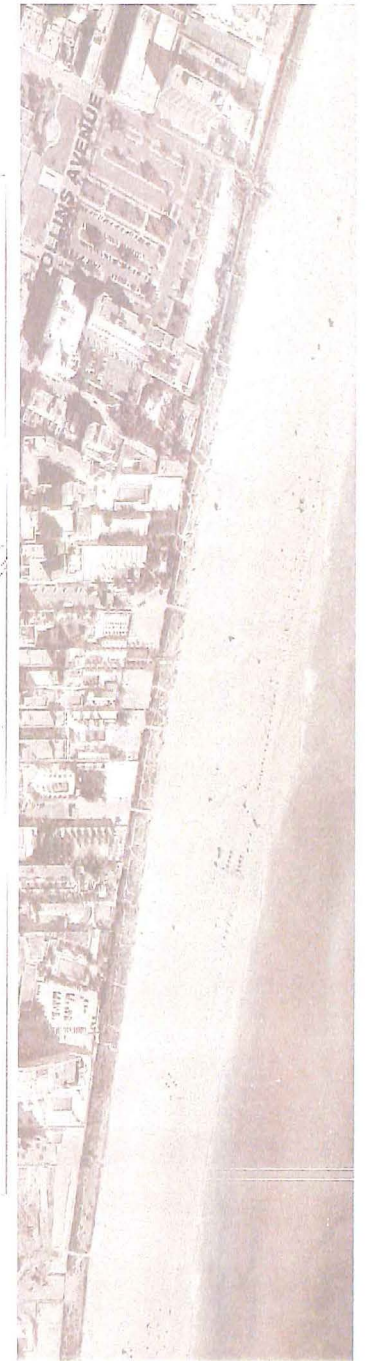
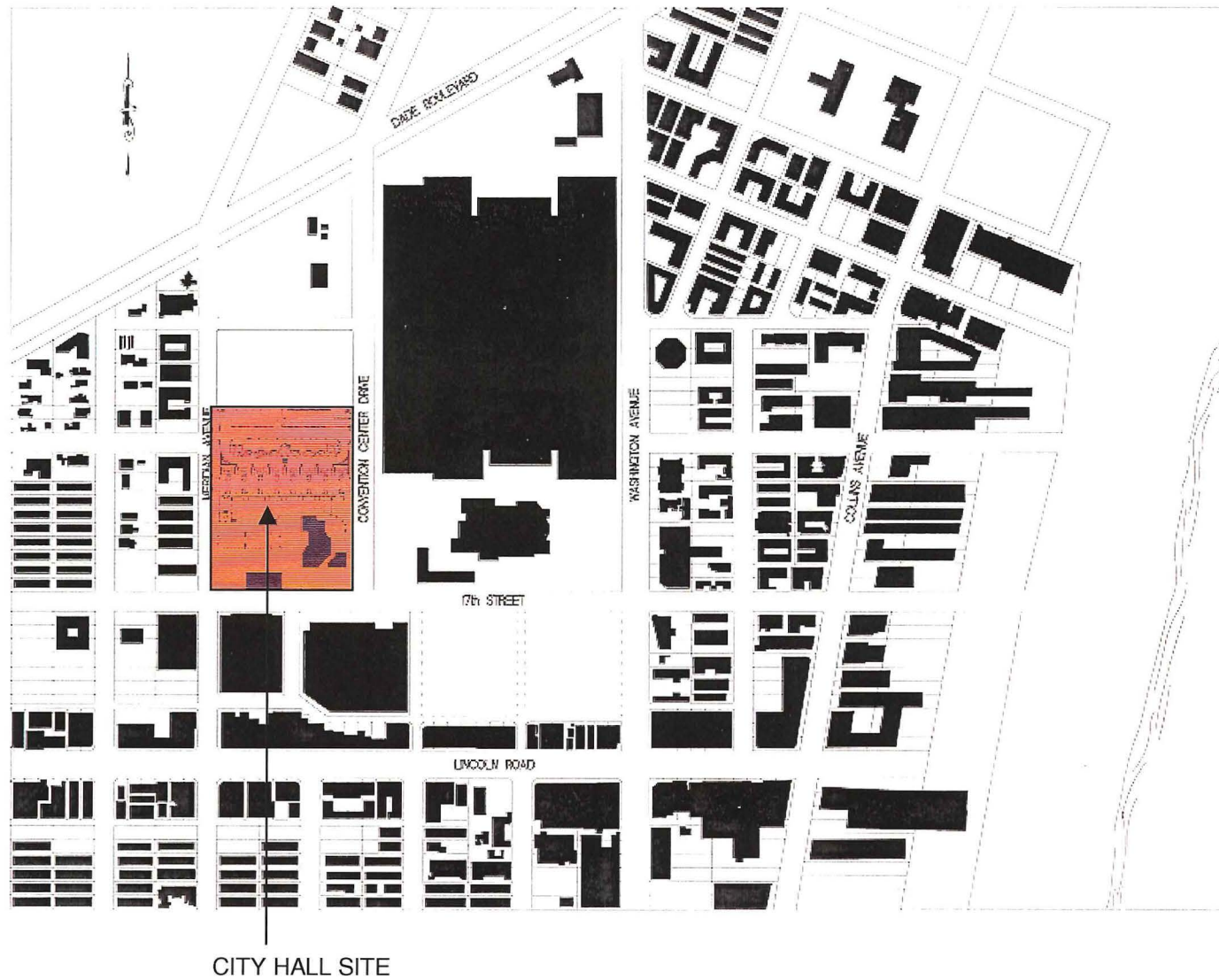


AERIAL VIEW ALONG 17TH STREET LOOKING SOUTH



CORRADINO

CITY HALL SITE



CORRADINO

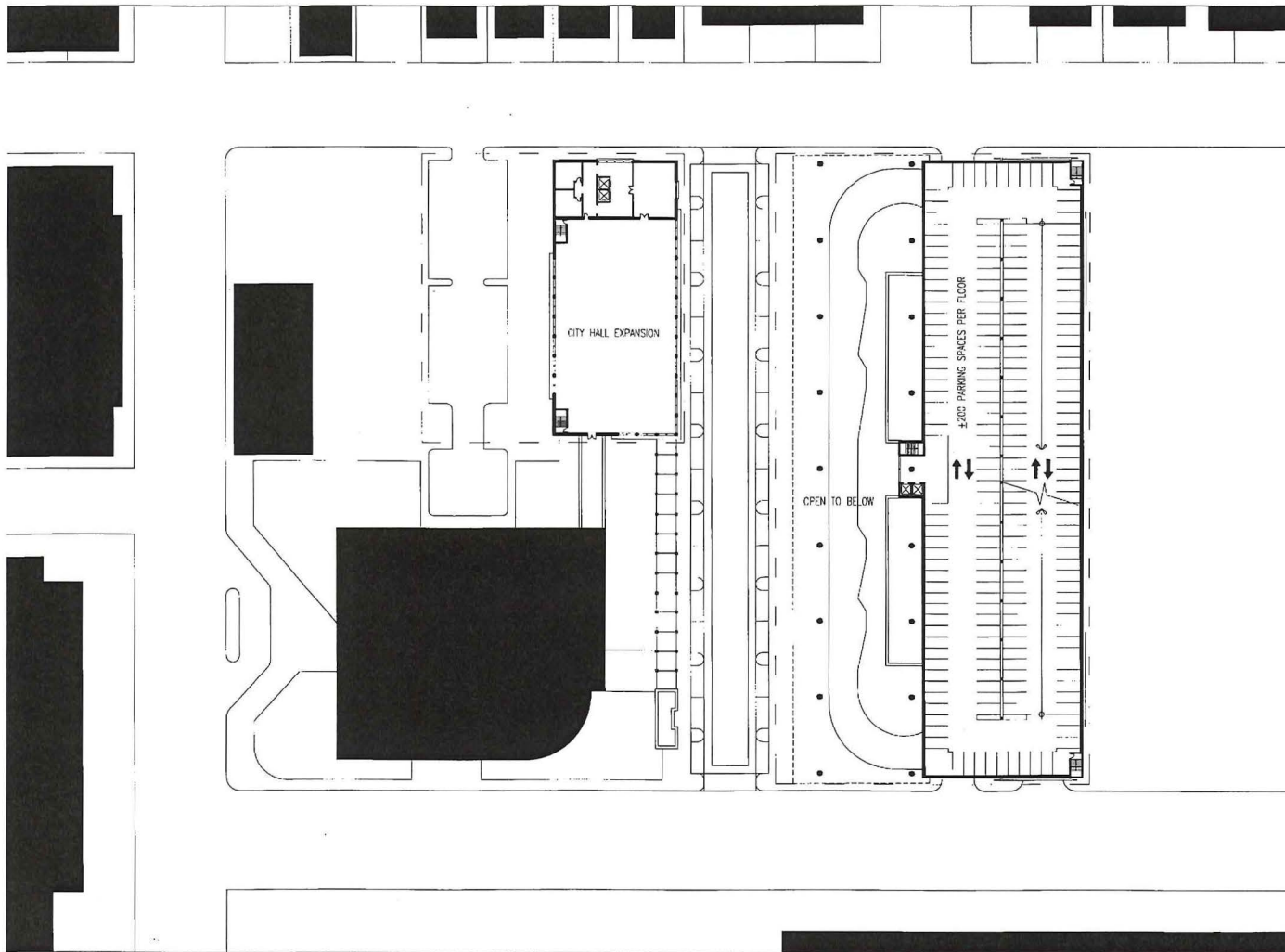


An aerial photograph of a coastal city. The right half of the image is dominated by a large, calm body of water. A long, straight pier or breakwater extends from the shore into the water. Along the coastline, a dense urban area is visible, featuring numerous buildings and a prominent road or railway line that runs parallel to the shore. The word 'AVENUE' is printed vertically on the left side of the image, oriented horizontally in the original orientation. The overall color palette is sepia-toned, with various shades of brown and tan.

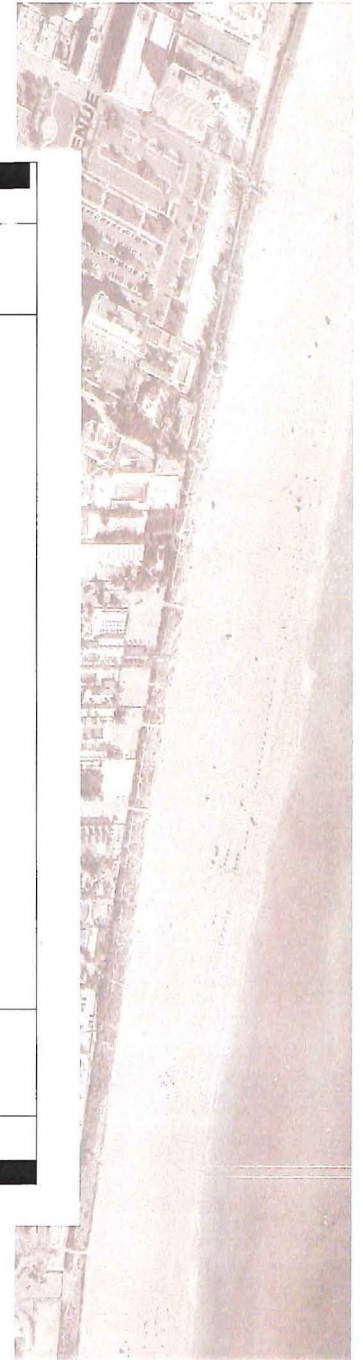


CORRADINO

CITY HALL SITE

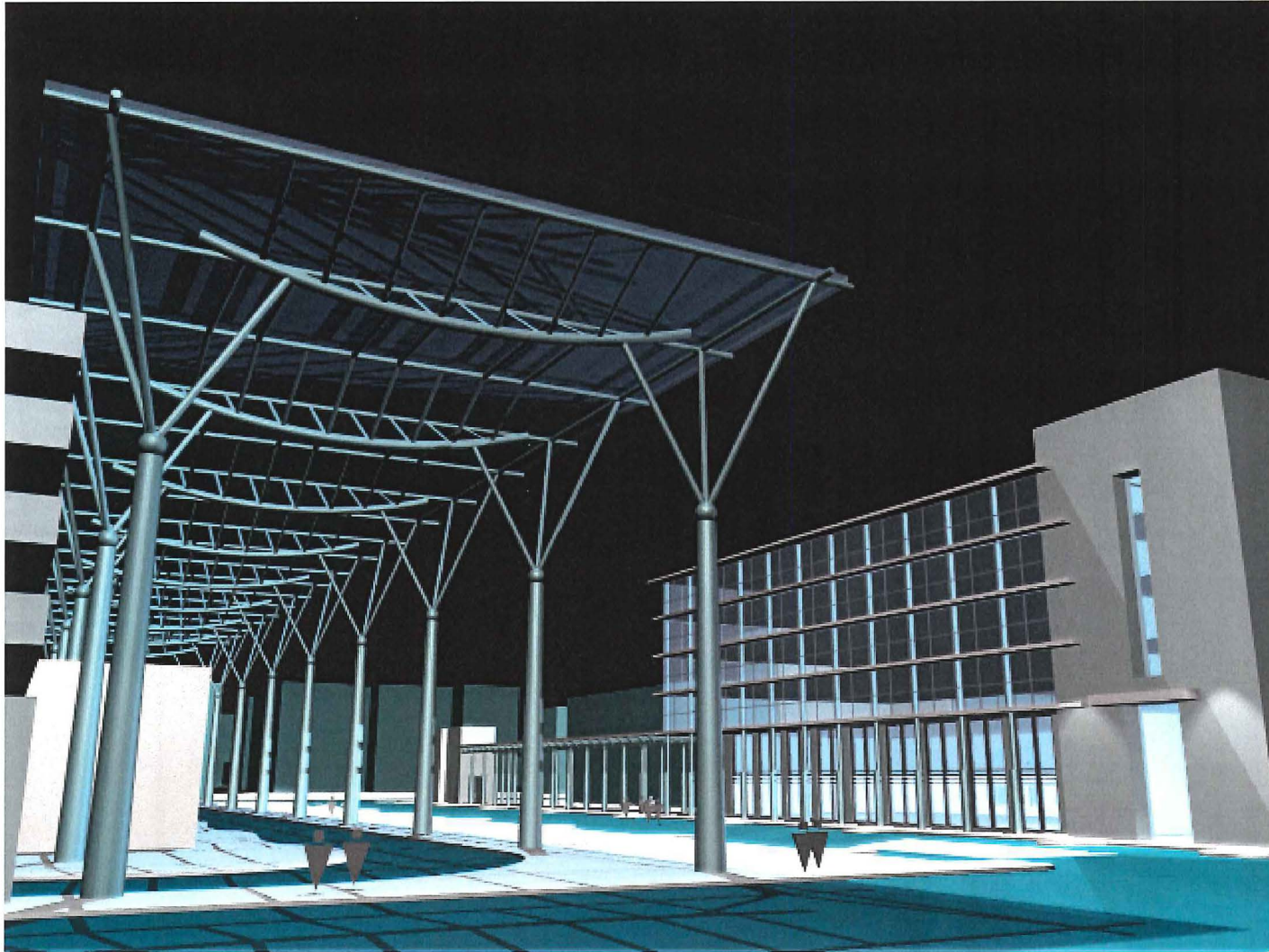


SECOND FLOOR



CORRADINO

CITY HALL SITE



VIEW FROM MERIDIAN AVENUE LOOKING EAST



CORRADINO

CITY HALL SITE

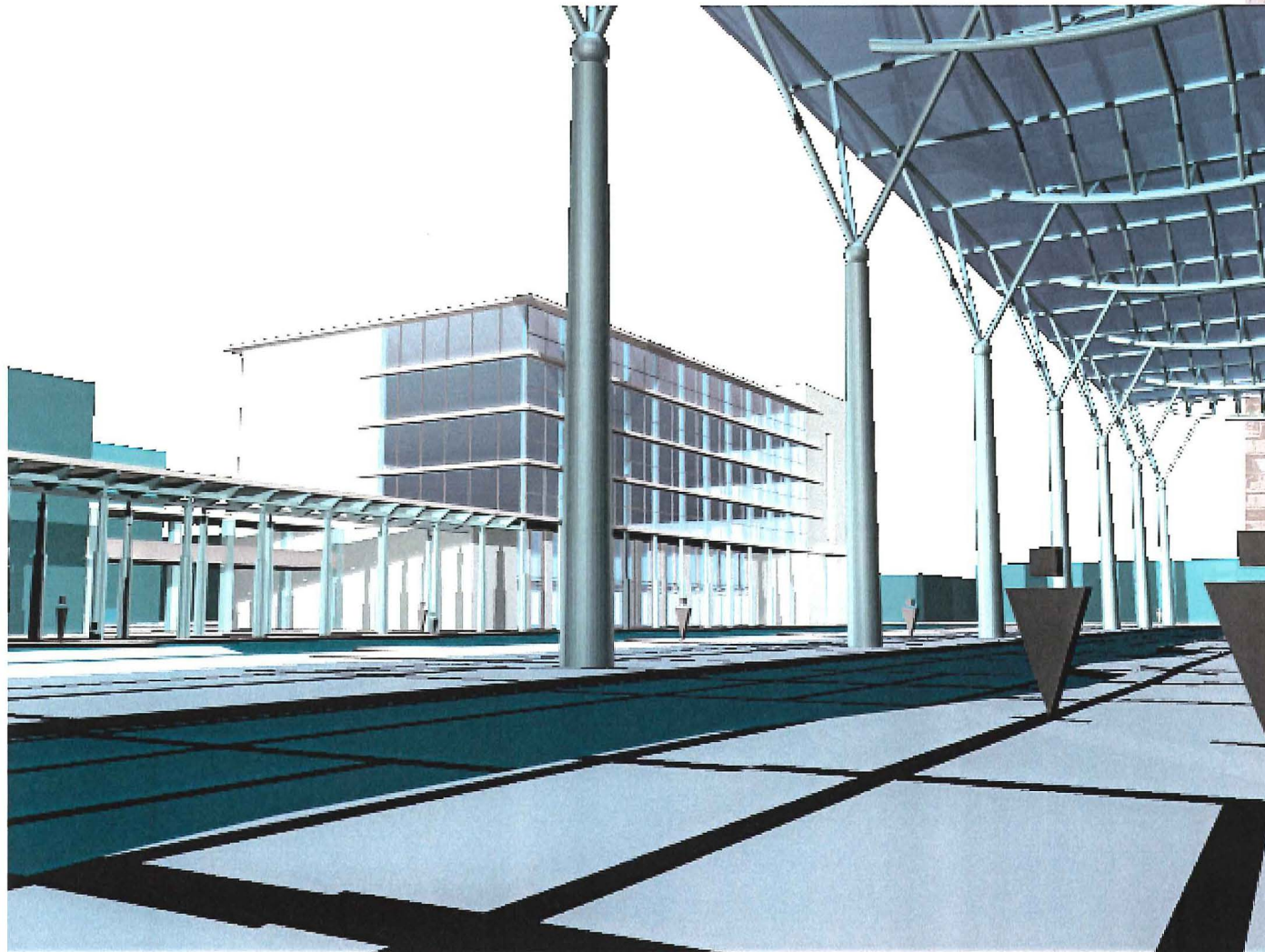


VIEW FROM CONVENTION CENTER DRIVE
LOOKING WEST

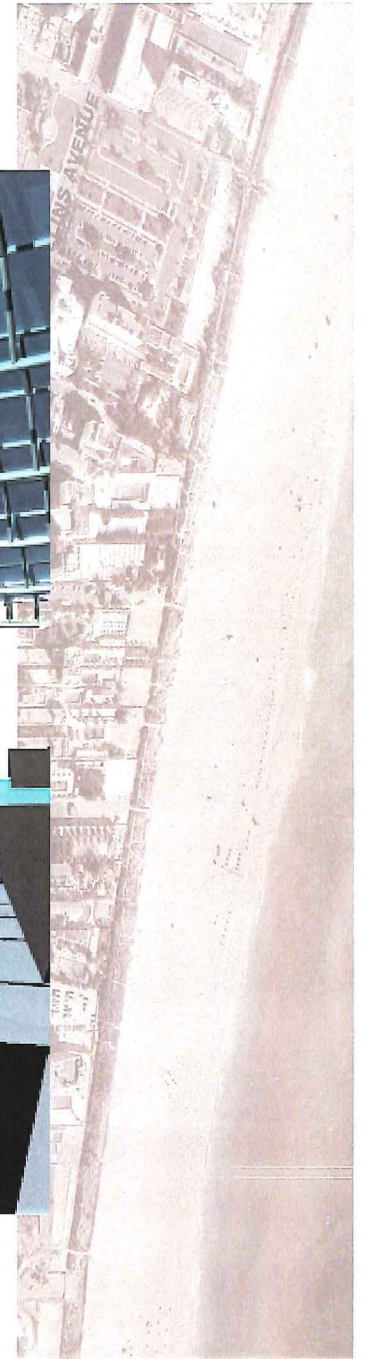


CORRADINO

CITY HALL SITE

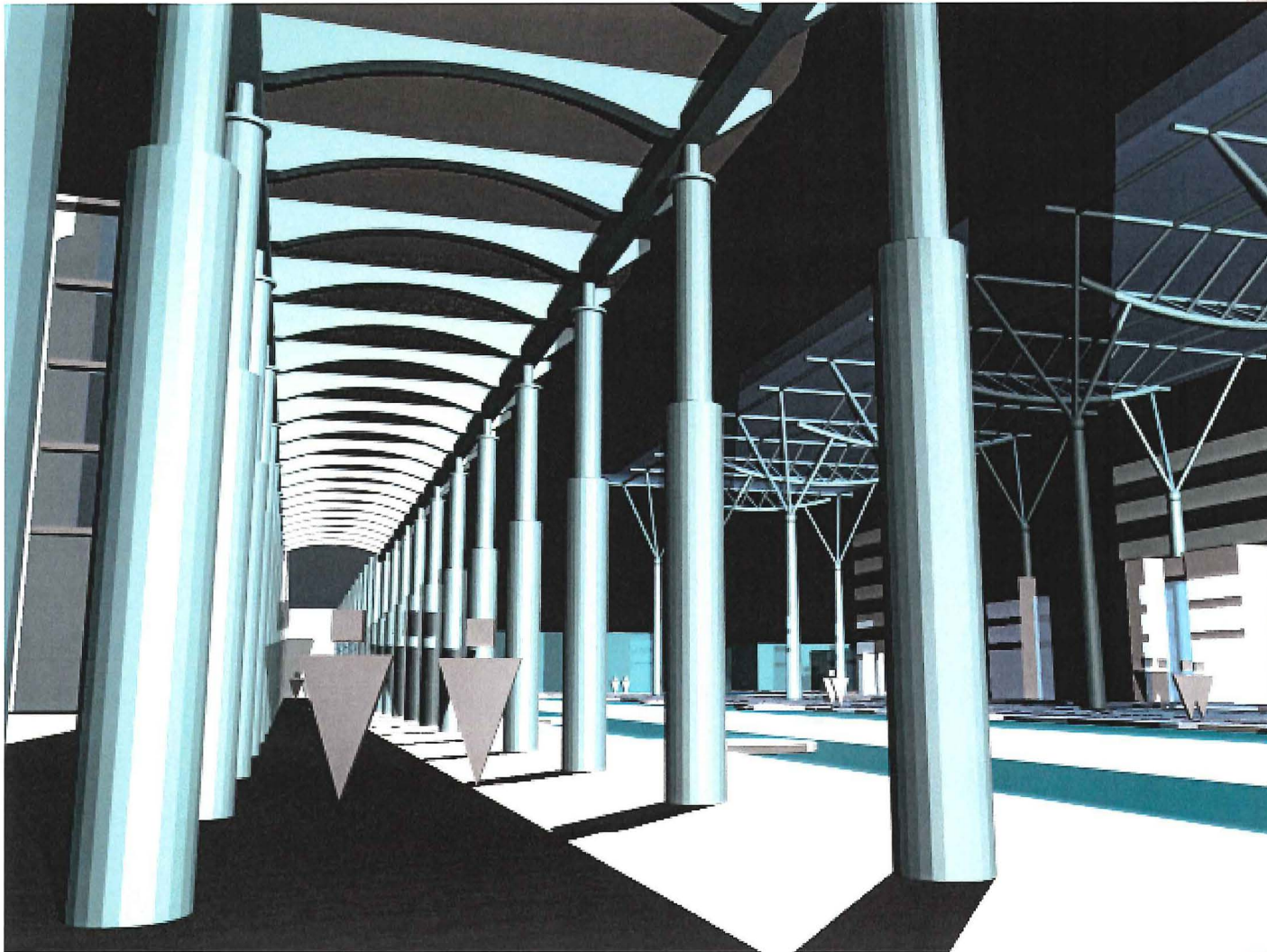


VIEW OF CITY HALL ANNEX LOOKING SOUTH

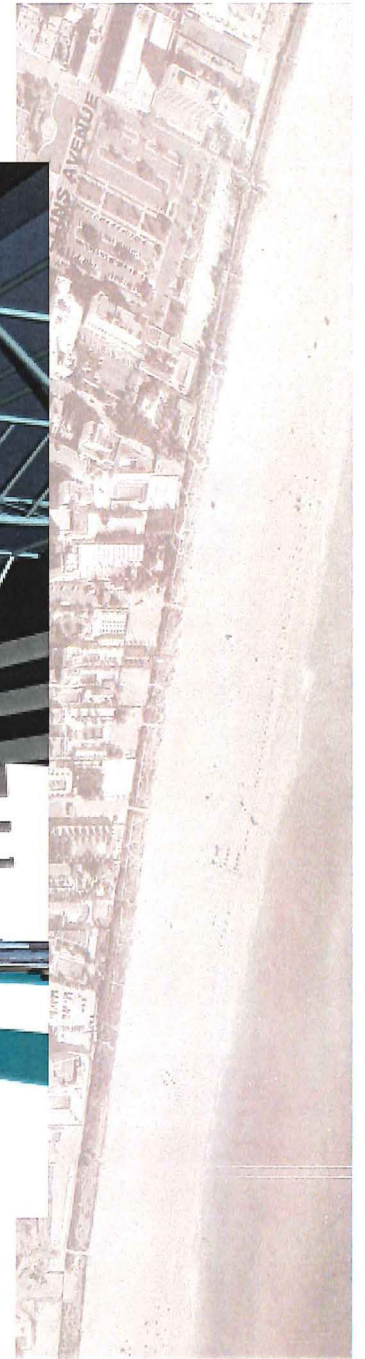


CORRADINO

CITY HALL SITE



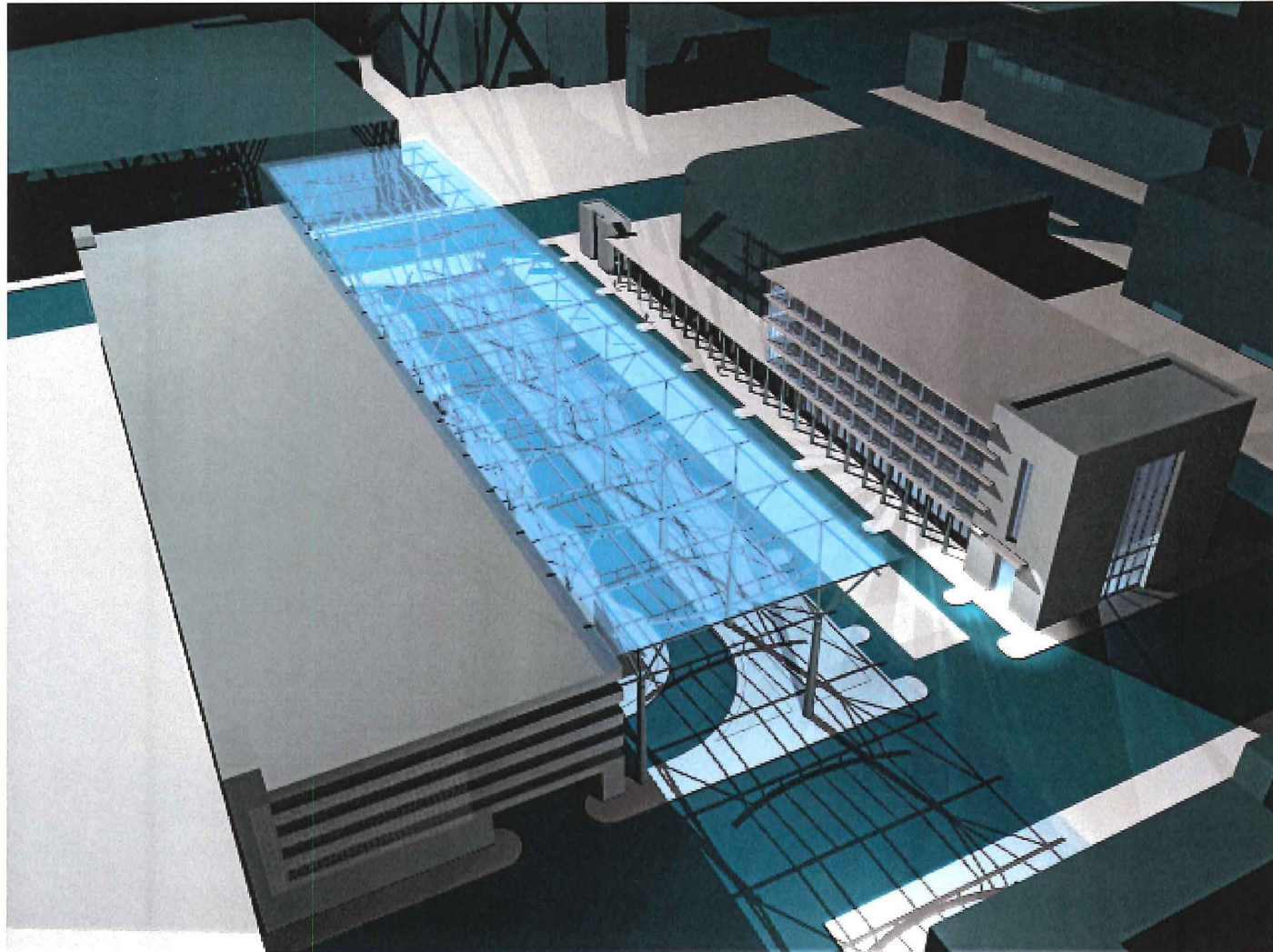
VIEW WITHIN 18TH STREET LOGGIA LOOKING
WEST



CORRADINO



CITY HALL SITE

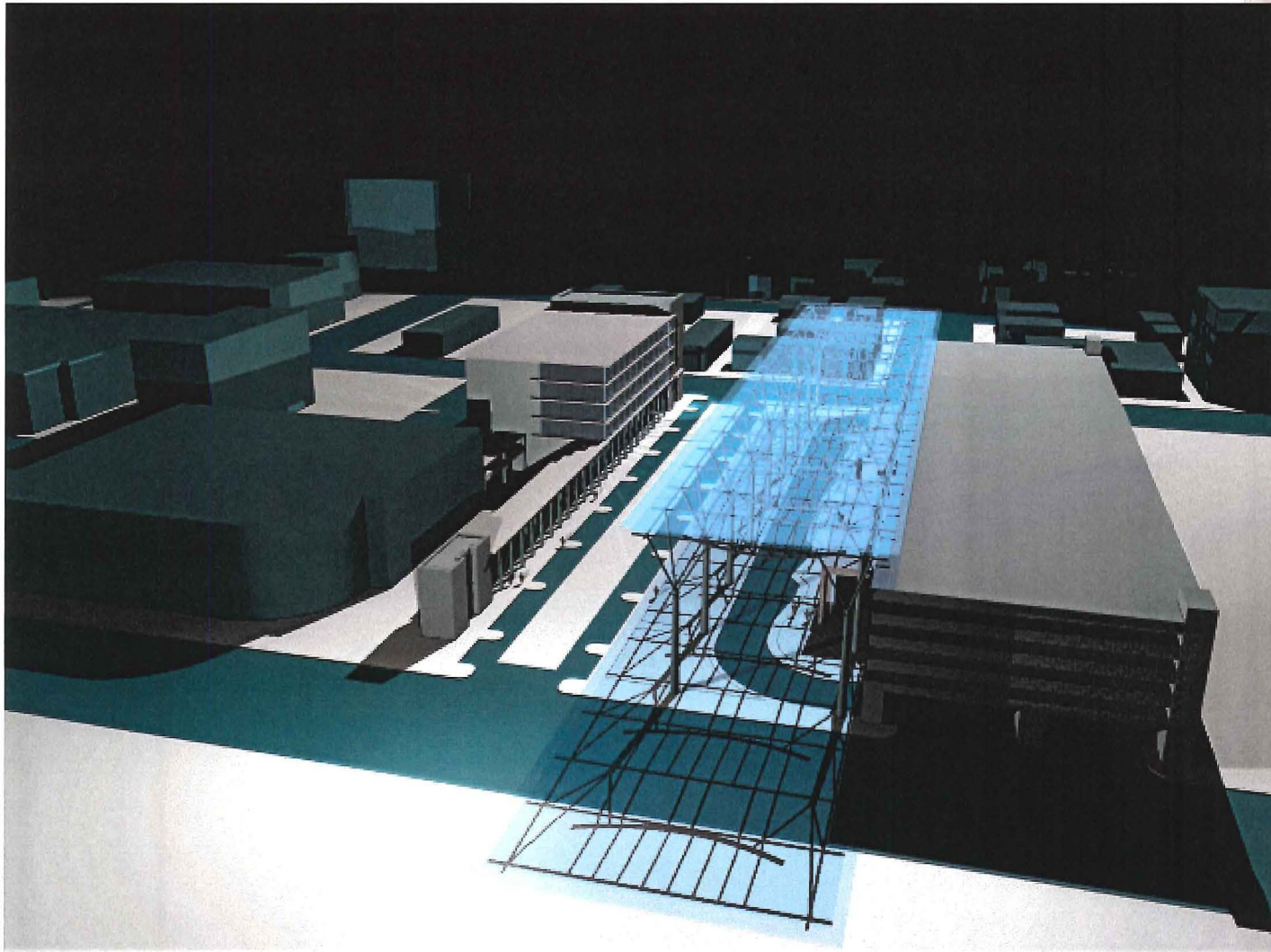


AERIAL VIEW ALONG MERIDIAN AVENUE
LOOKING SOUTH EAST

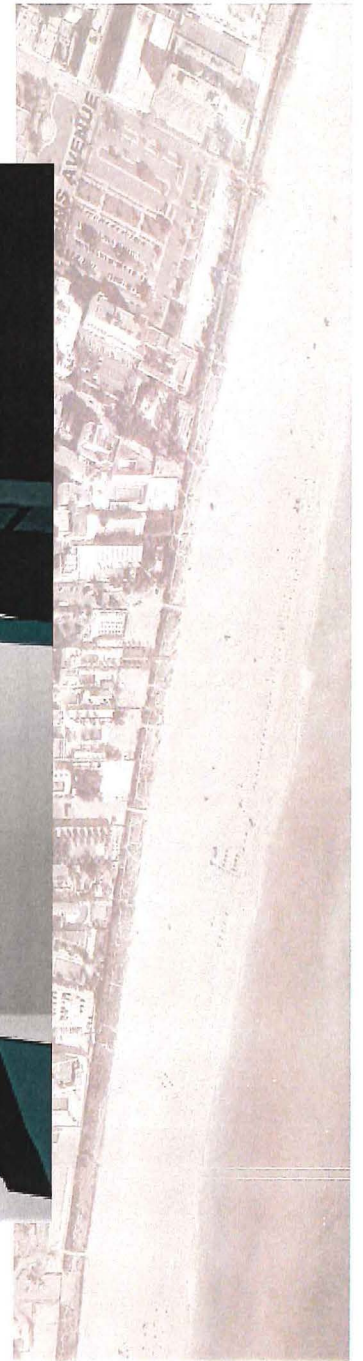


CORRADINO

CITY HALL SITE



AERIAL VIEW LOOKING WEST



CORRADINO



CORRADINO 2000
4055 NW 97th Avenue
Miami, Florida 33178
1800-887-5551

CORRADINO

