

MIAMI-DADE COUNTY MPO

Improving Access IN Florida International University DISCAYNE BAY CAMPUS AREA

WORK ORDER #GPC IV-11



Prepared by



Kimley-Horn
and Associates, Inc.

T1260079.10

Background

Study initiated to evaluate feasibility of adding connection to FIU Biscayne Bay Campus.

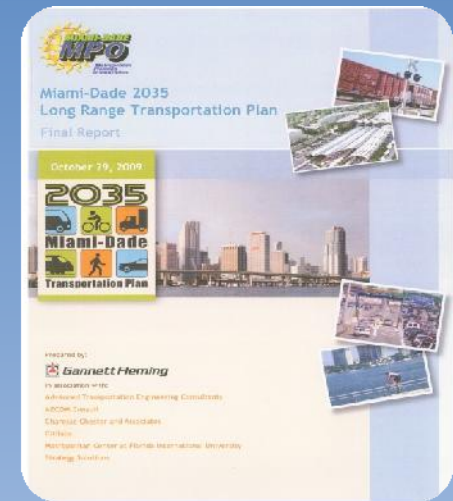
☐ Alternatives Considered

- NE 135th St.
- NE 143rd St.
- NE 151st St. improvements
- NE 163rd St. (Oleta River State Park)



Study Findings

- Only one existing access to FIU Biscayne Bay Campus and adjacent public schools via NE 151st St.
- School zones along NE 151st St. and Bay Vista Blvd. slow traffic
- No secondary emergency evacuation route
- Projected growth at FIU Biscayne Bay Campus and at elementary and high schools
- Unknown future development of Biscayne Landing property
- No programmed future roadway capacity improvements in study area
- Poor drainage along NE 151st St.



Alternative 1: Bay Vista Blvd./ NE 135th St. Connection

– Steps for Implementation

- City of North Miami jurisdiction/lead agency
- Prepare Environmental Impact Study
- Coordination with DEP, SFWMD, USACE, DERM, and NMFS
- Evaluate additional traffic on NE 135th Street
- Postpone LAP agreement for bicycle/pedestrian bridges
- Identify funding sources
- Costs \$5,000,000 two-lane, \$11,700,000 four-lane



Alternative 2: NE 143rd St. Connection

– Steps for Implementation

- City of North Miami jurisdiction/lead agency
- Coordination with Biscayne Landing/FIU Development for cross-access agreement
- Coordination with FDOT regarding Biscayne Boulevard and NE 143rd Street
- Prepare Environmental Impact Study
- Coordination with all environmental agencies
- Identify funding sources
- Costs \$25,000,000 two-lane, \$38,900,000 four-lane



Alternative 3: NE 151st St. Improvements

– Steps for Implementation

- Miami-Dade County jurisdiction/lead agency
- Coordinate funding options with FIU, FDOT, and Miami-Dade County Public Schools
- Establish Interlocal Agreements with the participating agencies and include improvements in the TIP
- Coordinate and evaluate with FDOT improvements at Biscayne Boulevard and NE 151st Street
- Evaluate the potential environmental impact of the proposed improvements



Alternative 4: NE 163rd St. (Oleta River State Park) Connection

– Steps for Implementation

- Prepare Environmental Impact Study
- Coordination with the environmental agencies
- Coordinate with FDOT regarding the impacts to the intersection of NE 163rd Street and Interama Boulevard
- Identify funding sources for alternative
- Costs \$6,600,000 two-lane, \$9,400,000 four-lane



Conclusions

- ❑ Alternative 1: Bay Vista Blvd./NE 135th St. Connection
 - Less environmental impact but:
 - ✓ In 2007, City of North Miami approved Resolution R-2007-52 declaring area as environmental preserve in perpetuity
 - ✓ Still requires environmental mitigation measures
 - ✓ Will face strong opposition from residents of area
 - ✓ Construction of pedestrian/bicycle bridges would need to be postponed
- ❑ Alternative 2: NE 143rd St. Connection
 - Environmental impacts to wetlands require major mitigation measures and expensive bridge construction
- ❑ Alternative 3: NE 151st Street Improvements
 - Improvements could improve access to FIU and area schools
- ❑ Alternative 4: NE 163rd St. (Oleta River State Park) Connection
 - Environmental concerns and numerous permits/agreements required
 - Potential use as emergency evacuation route

Short Term Improvements

Improvements Along NE 151st Street

- Relocate existing bus stops at High School next to crosswalk, provide bus shelters



New Crosswalk at High School's Central Driveway



High School Students Waiting for Bus at Westbound NE 151st Street Bus Stop

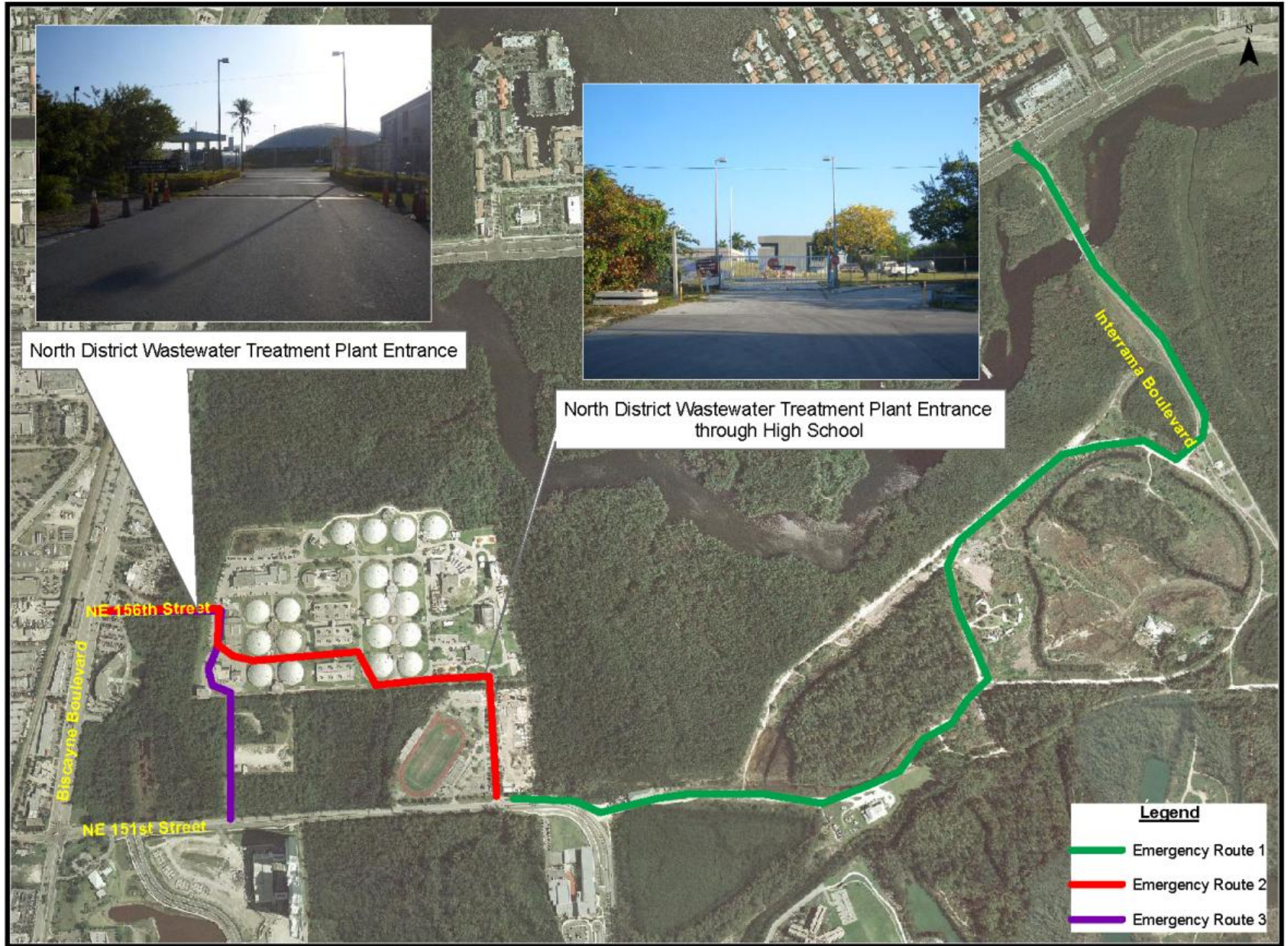
Short-Term Improvements continued...



Short-Term Improvements continued...

Emergency Access Plan

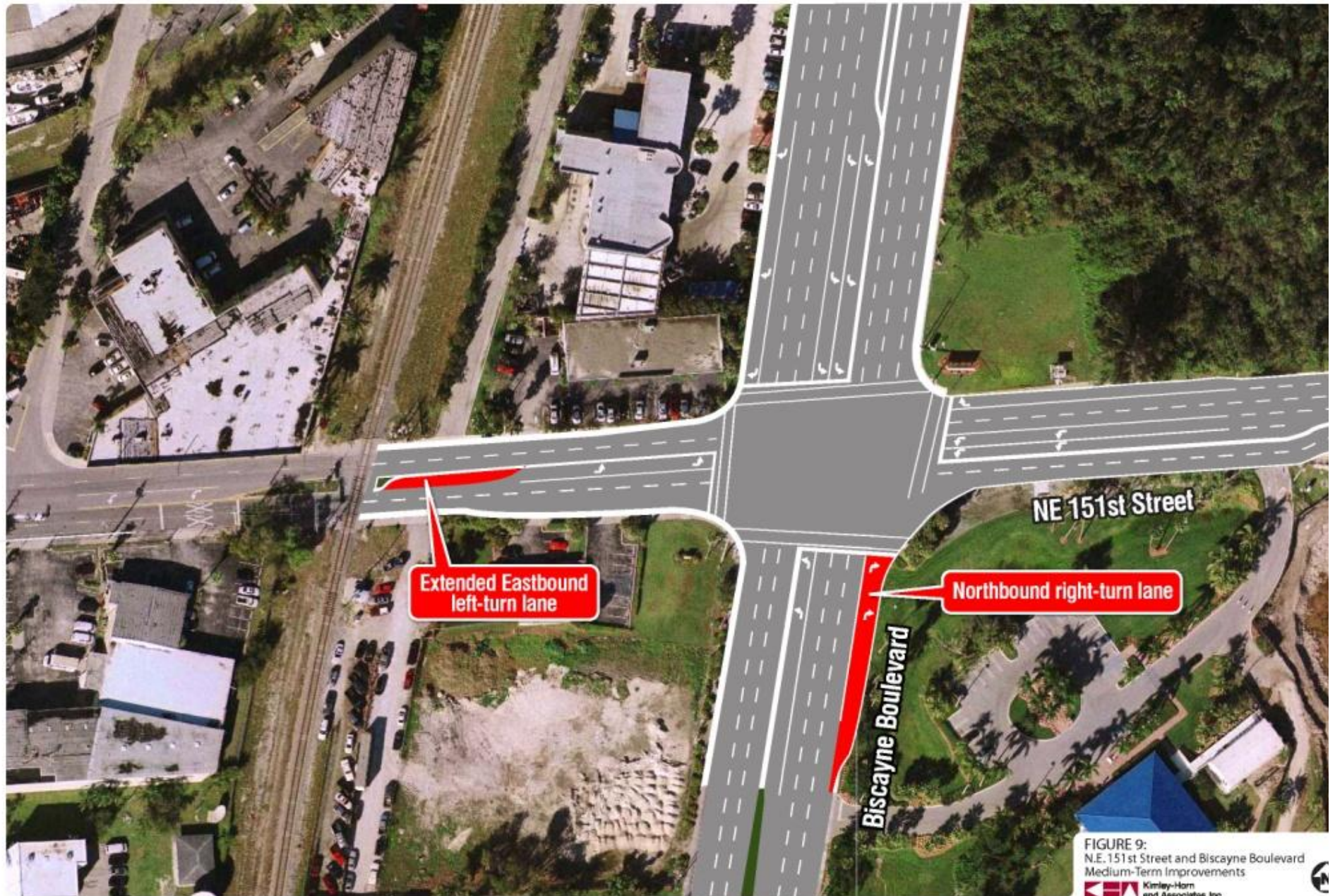
- Three (3) routes identified
 - 1) Oleta River State Park Access
 - 2) NE 156th Street via High School and Treatment Plant
 - 3) NE 156th Street via Treatment Plant
- FIU and the Miami-Dade Public Schools need to coordinate with State of Florida Department of Environmental Protection Division of Recreation and Parks and Miami-Dade County Water and Sewer Department to facilitate the emergency access routes.



Short-Term Improvements continued...

Figure 19: Emergency Access Routes

Medium-Term Improvements



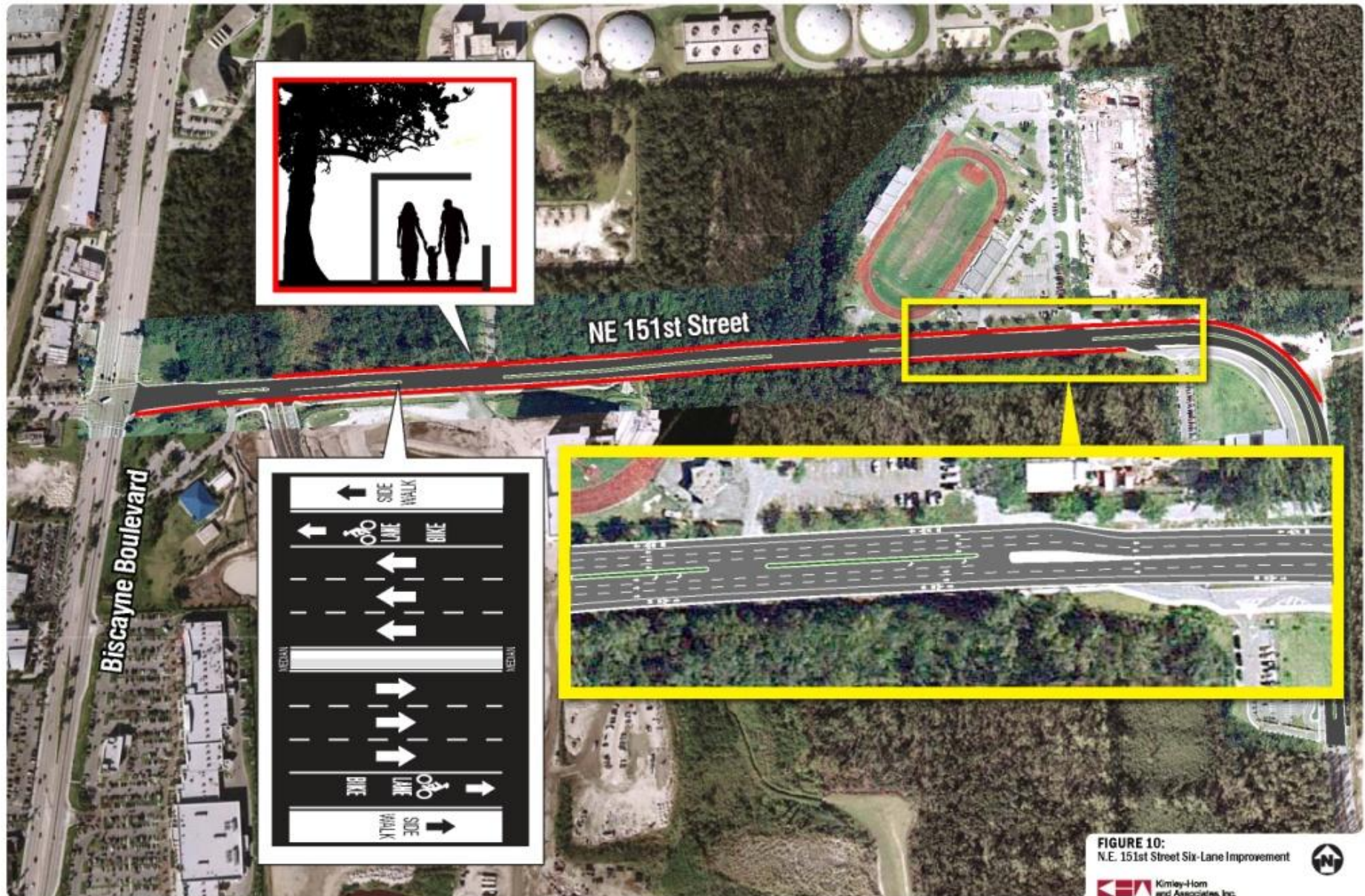
Medium-Term Improvements continued...



Medium-Term Improvements continued...

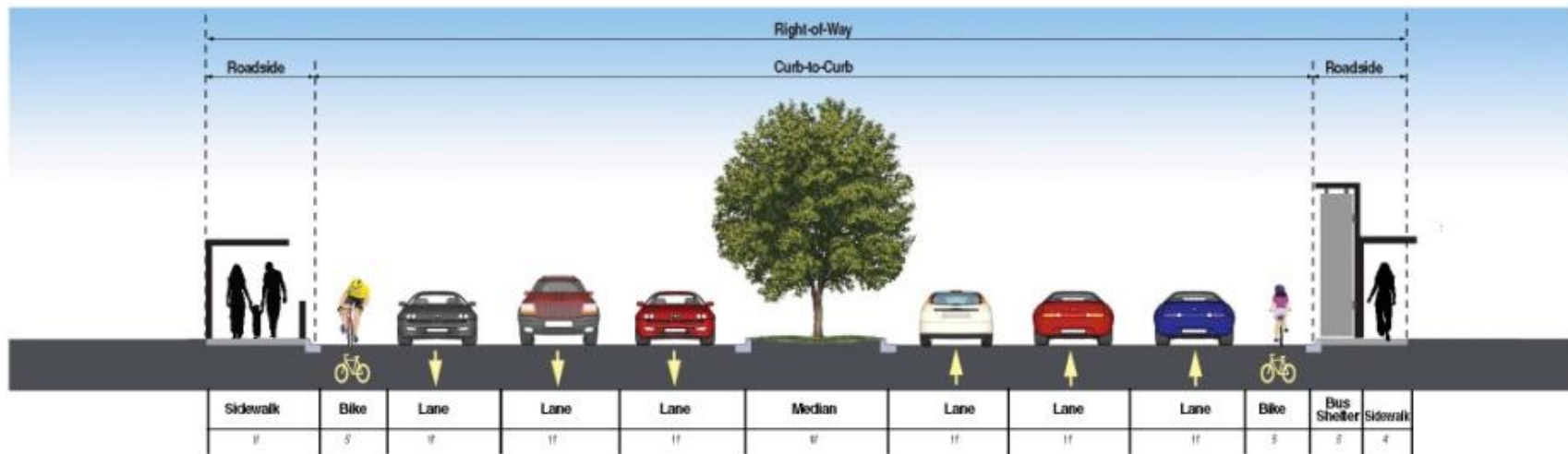


Long-Term Improvements



Long-Term Improvements continued...

NE 151st Street Six-Lane Divided



Curb to curb-deck to front of curb to front of curb

FIGURE 11:
N.E. 151st Street Typical Section

Discussions and Questions