

City of Doral

FIU Trolley Route Expansion

Feasibility Study

David Plummer & Associates





Prepared By:
David Plummer & Associates

Prepared For:
City of Doral

Prepared In:
November 2017

DPA Job #:
15211

TABLE OF CONTENTS

	<u>Page</u>
List of Exhibits.....	ii
EXECUTIVE SUMMARY	iii
1.0 INTRODUCTION.....	1
1.1 Project Background.....	1
1.2 Study Objective.....	3
1.3 Study Methodology.....	3
2.0 STUDY AREA.....	4
2.1 Existing Transit Service.....	4
2.2 Other Circulators.....	7
3.0 OPERATING OPTIONS	8
3.1 Preliminary Area Analysis.....	8
3.2 Proposed Route Alternatives/Alignments.....	9
3.3 Travel Time Runs	15
3.4 MDC Requirement.....	16
3.5 Ridership Estimates	17
3.6 Recommended Route	19
3.6.1 Stop Locations	20
3.6.2 Boarding Process	20
3.6.3 Hours of Operation and Headways.....	20
3.7 Vehicular / Staffing Requirements.....	22
3.8 Fare Structure.....	22
4.0 COSTS	23
5.0 PUBLIC INVOLVEMENT	24
6.0 CONCLUSIONS AND RECOMMENDATIONS.....	25
Appendix A: Existing Transit	
• MDT Routes/Schedule/Ridership • FIU Shuttle • City of Sweetwater Circulator	
Appendix B: Travel Time Run	
Appendix C: Preliminary Trolley Stop Locations	
Appendix D: Potential Ridership	
• SERPM Data • TAZ Map • Hot Spot Maps	
Appendix E: Public Involvement	
• City’s Resolution No.17-206 • Meeting Sign-in Sheet • FIU Comment Form	

LIST OF EXHIBITS

<u>Exhibit</u>	<u>Page</u>
1 Location Map	2
2 Existing Miami-Dade Transit Routes	5
3 Existing Miami-Dade Transit Bus Stops	6
4 FIU Trolley Route Alternative 1	12
5 FIU Trolley Route Alternative 2	13
6 FIU Trolley Route Alternative 3	14
7 Travel Time Run Results	15
8 MDC Requirement for Circulators	16
9 Evaluation Matrix	19
10 Preliminary Trolley Stop Locations	21
11 FIU Trolley Route Cost Breakdown	23
12 Proposed FIU Trolley Route	25

EXECUTIVE SUMMARY

In February 2008, the City of Doral launched the Doral Transit System (DTS) as a two year pilot program to provide an intra-city circulator, known as the Doral Trolley. The purpose of the trolley system is to help relieve localized traffic congestion, increase transit ridership, and off-set parking shortages. Today the City operates three trolley Routes; Route 1 – Cross-town Connector (Blue Route), Route 2 – Commercial/Metrorail Connector (Yellow Route) and Route 3 – Residential/Metrorail Connector (Green Route).

The Doral Trolley has been extremely successful and has surpassed many projections within the first year. During the Fiscal Year 2015/2016 the total yearly ridership was in excess of 550,000 boardings. This represents a 25% increase over the previous year. With the tremendous success of the Doral Trolley, the City wants to explore the feasibility of providing a new route that provides services between the City and Florida International University (FIU).

The new route was developed considering population density, activity centers, interconnection to other transit systems, and coverage area. Existing Miami-Dade Transit service within the study area, as well as existing Doral Trolley Routes, Sweetwater Trolley Routes, and FIU Shuttles were reviewed and documented in order to provide connectivity to the new trolley route.

Three distinct alignments and route alternatives were developed for the FIU Trolley Route. After further analysis that included reviewing that each route meets Miami-Dade County (MDC) requirements, travel time runs, ridership estimates, and coordination with the City, Alternative 3 was recommended as the preferred route. A summary of the proposed FIU Trolley Route is provided below.

Proposed FIU Trolley Route			
Schedule	Weekday	Saturday	Sunday
Route Length	15.2 miles	Service not proposed	Service not proposed
No. of Trolleys	2		
Average Speed	11 mph		
Peak Hour Trolley Headways	30 – 45 minutes		
Off-Peak Hour Trolley Headways			
Service Span	6:00 AM – 11:00 PM		
Number of Stops	42		
Number of Stations	9		
Spacing between Stops	500 to 3500 feet		

The student/faculty class schedule at FIU begins early in the morning and since the proposed route primarily serves as a connection between FIU and the residential/commercial areas along NW 107th Avenue within the City of Doral, the proposed trolley is recommended to operate Monday through Friday from 6 A.M. to 11 P.M; with approximate 30-45 minute headways. It is estimated that the Alternative 3 will have 137,020 yearly boardings. In order to maintain the proposed 30-45 minute headways, the FIU Trolley Route would require two trolleys.

As discussed with the City’s Trolley Manager, the circulator will continue to be a free service. The benefits of having a free circulator system are apparent. Free fare gives the system the opportunity to maximize its ridership, reflecting the City’s desire for a successful system. Also, there would be less potential for operational delays along the Route. The desired headways would therefore be easier to maintain.

The costs of the new trolley route was estimated using information provided by the City. The approximate capital costs associated with the proposed Route is \$400,000, the approximate annual operating and maintenance costs is \$550,000 and the approximate annual technology service costs is \$3,400.

1.0 INTRODUCTION

1.1 Project Background

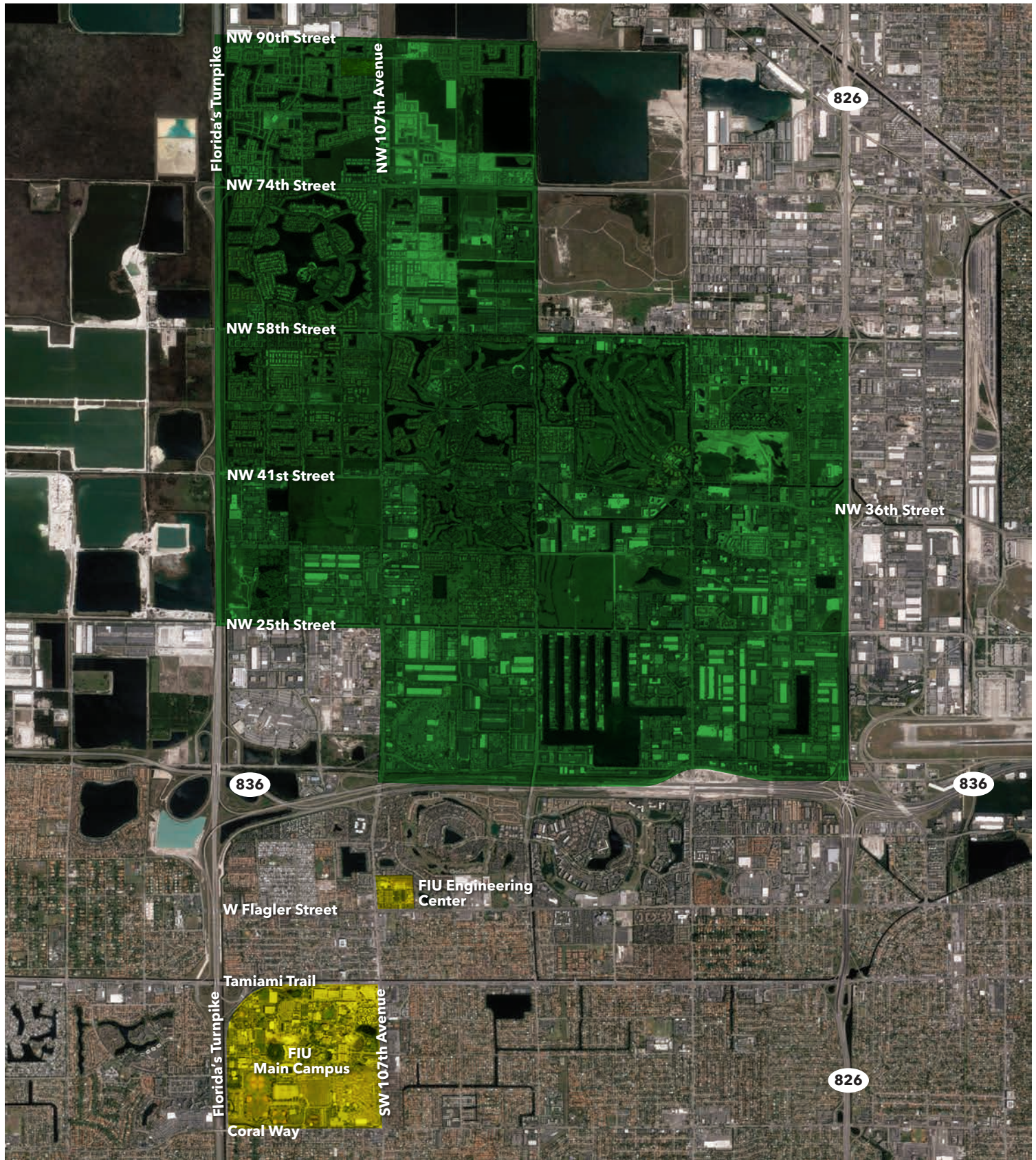
In February 2008, the City of Doral launched the Doral Transit System (DTS) as a two year pilot program to provide an intra-city circulator, known as the Doral Trolley. The purpose of the trolley system is to help relieve localized traffic congestion, increase transit ridership, and offset parking shortages. Today the City operates three trolley Routes; Route 1 – Cross-town Connector (Blue Route), Route 2 – Commercial/Metrorail Connector (Yellow Route) and Route 3 – Residential/Metrorail Connector (Green Route).

The Doral Trolley has been extremely successful and has surpassed many projections within the first year. During the Fiscal Year 2015/2016 the total yearly ridership was in excess of 550,000 boardings. This represents a 25% increase over the previous year. With the tremendous success of the Doral Trolley, the City wants to explore the feasibility of providing a new route that provides services between the City and Florida International University (FIU). The location map shown as Exhibit 1.

The success of the existing trolley system can be attributed to several specific factors that should also be taken into account when considering the potential route expansion. Those factors include:

- Short headways
- Interconnectivity between the trolley and existing mass transit system (i.e., Metrorail)
- Free fare
- Connectivity to major activity centers

City of Doral - FIU Trolley Route Expansion Feasibility Study




 City of Doral  Florida International University

Exhibit 1 Location Map



1.2 Study Objective

The objective of this study is to develop up to three potential route alternatives that will connect the City of Doral and provide services to FIU. The route were developed considering population density, activity centers, interconnection to other transit systems, and coverage area. Preliminary trolley stops/spacing will also be identified.

1.3 Study Methodology

The data collection and analysis presented in this report were performed in accordance with the scope of work presented to the City of Doral. A summary of the data collected is provided below:

- Existing Miami-Dade Transit (MDT) service information such as alignments and frequencies, as well as ridership within the route expansion areas was documented.
- Existing bus stop information from both MDT and City of Sweetwater to explore the possibility of co-locating future trolley stops were reviewed.
- Existing Doral Trolley Routes, the Sweetwater Trolley Routes as well as transit hub information at FIU and Miami International Mall was also collected.
- The 2010 Southeast Florida Regional Planning Model was reviewed for population and employment estimates along the proposed routes alternatives. Ridership estimates were projected based on demographics and actual experience from the Doral Trolley.
- Travel time runs were collected during a regular weekday for the am (7-9am), midday (11:30am-1:30pm), and pm (4-6pm) peak periods.

Three route alternatives and alignments were developed with the coordination of the City of Doral staff. In addition, several meetings with the City of Doral, City of Sweetwater and FIU were held during the development of proposed route alternatives.

2.0 STUDY AREA

The three proposed alternatives connect the City of Doral with the FIU Main Campus and the FIU Engineering Center, using the NW 107th Avenue corridor generally from SW 8th Street to NW 90th Street.

2.1 Existing Miami-Dade Transit Service

Information regarding existing MDT transit route within the area of the proposed trolley routes was obtained from the County. The routes that run on NW 107th Avenue were reviewed since they may potentially provide connectivity to the new trolley routes. The following MDT Routes run along a segment or cross NW 107th Avenue between the FIU Main Campus and NW 41st Street: Routes 7, 8, 11, 24, 36, 51, 71, 82, 137, 212, 238, and 338. These existing Routes are shown in Exhibit 2.

Bus Routes 7, 36, 71, 137, and 238 specifically circulate around the Dolphin Mall. With the exception of Bus Route 238, the bus routes mentioned previously operates on weekdays and weekends on their daily schedule. Bus Route 238 only operates on the weekdays making an east west connection from the Miami International Airport to the Dolphin Mall and vice-versa. Bus Routes 8, 11, 24, and 82 circulate around FIU on a weekday and weekend schedule. Bus Route 51 circulates around the downtown area making its way west to Tamiami on a regular weekday schedule. Bus Route 212 only circulates within Sweetwater on a regular weekday schedule. The routes can also be seen in Exhibit 2.

Additionally, route schedules and ridership information was obtained from MDT for these routes. Headway were summarize by route and have been included in Appendix A. Information provided by MDT shows approximately 45 bus stop locations. Stop locations within the study area have also been summarize (see Exhibit 3). Detailed route information is included in Appendix A.

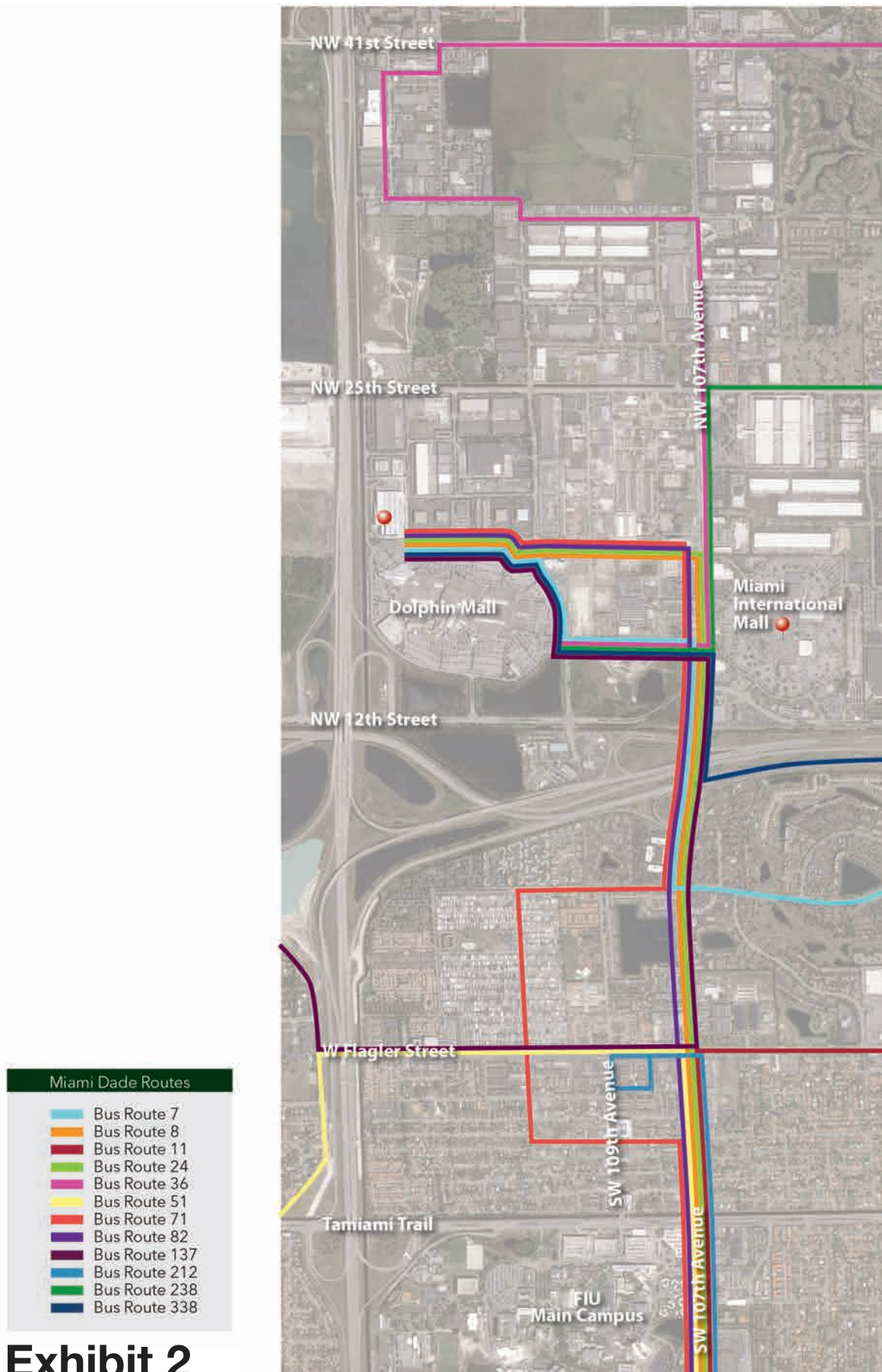


Exhibit 2

Existing Miami-Dade Transit Bus Routes

2.2 Other Circulators

The City of Sweetwater provides trolley services to the public free of charge. The trolley provides services to popular locations, such as the Dolphin Mall, parks and the Sweetwater Municipal Complex. The trolley service routes operates Monday through Friday from 8:00 am to 7:00 pm and Saturday and Sunday from 8:30 am to 5:00 pm.

FIU provides a shuttle service (CATS) free of charge to students, faculty, staff and visitors. The shuttle provides service to most of the major campus buildings, parking lots/garages, the Engineering Center, and the Main Campus. The service operates two shuttles Monday through Friday from 6:00 am to 11:00 pm, with departures every 15 minutes at the top of the hour. In addition to the CATS Shuttle, FIU provides the Golden Panther Express (GPE) Shuttle which provides an alternative to driving between FIU's Main Campus and the Biscayne Bay Campus. The GPE Shuttle service operates Monday through Friday, from 6:00 am to 11:00 pm, with departures every half hour. Detailed information for the City of Sweetwater trolley and the FIU Shuttles is also included in Appendix A.

3.0 OPERATING OPTIONS

3.1 Preliminary Analysis

The proposed trolley route alternatives will serve the City of Doral, the FIU Engineering Center, and the FIU Main Campus. Within the City of Doral, alternatives were chosen to also provide service to other potential generators such as Ronald W. Reagan Doral Sr. High School, and Divine Savior Academy. These and other potential generators were taken into account as possible stops for the proposed trolley route alternatives.

Ronald W. Reagan Doral Sr. High School is located south of NW 88th Street and west of NW 107th Avenue. Access to the school is provided through NW 86th Street. The high school has a population of approximately 2,300 students. It should be noted that the school is currently serviced by the existing Trolley Route 3 (the green route).

Divine Savior Academy is located south of NW 66th Street and east of NW 107th Avenue. Access to the school is provided on NW 104th Avenue just north of NW 58th Street. The school serves students from Pre-K to 12th grade and has approximately 900 students.

The FIU Engineering Center is located north of W. Flagler Street and east of NW 107th Avenue. Access to the University can be either through its main entrance located on W. Flagler Street or through a side entrance located on NW 107th Avenue. The FIU Engineering Center enrolls approximately 2,800 undergraduate students, and over 700 graduate students.

The FIU Main Campus is located on the southwest corner of the SW 8th Street and SW 107th Avenue intersection. The FIU Main Campus provides various entrance locations along SW 8th Street and SW 107th Avenue with two main entrance locations; one is located on the SW 16th Street / SW 107th Avenue intersection and another on the SW 8th Street / SW 112th Avenue intersection. FIU has a population of approximately 54,000 students.

All of the proposed route alternatives will mainly traverse along the NW 107th Avenue corridor therefore the type of land uses and potential generators adjacent to and accessed via the corridor were reviewed. The segment of NW 107th Avenue south of NW 12th Street consist of some commercial uses adjacent to the corridor, surrounded by residential areas. Just north of NW 12th Street, the NW 107th Avenue corridor provides access to both the Dolphin Mall and the Miami International Mall and is mainly a commercial district until NW 41st Street. The segment of NW 107th Avenue north of NW 41st Street is primarily a residential area with sporadic commercial shopping strips.

3.2 Proposed Route Alternatives / Alignments

As part of this study, three alternatives were developed and analyzed to determine the feasibility of the new FIU Trolley Route. These alternatives in general connect the City of Doral with the FIU Main Campus and the FIU Engineering Center, using NW 107th Avenue. Exhibits 4 through 6 illustrate on a base aerial of the study area, the proposed FIU Trolley alternatives.

FIU Trolley Route Alternative 1

The first alternative provides a northern circulation to service NW 66th Street, Divine Savior Academy, Landmark, and Doral Cay. The southern circulation services the FIU Engineering Center, the 109 Tower and the FIU Main Campus.

Route alignment is as follows: this alternative travels northbound along NW 107th Avenue turning eastbound on NW 66th Street, southbound on NW 102nd Avenue and westbound on NW 58th Street. It then turns left back onto NW 107th Avenue to travel southbound. The route continues traveling south on NW 107th Avenue until W Flagler Street. After turning westbound on W Flagler Street the route turns left on SW 109th Avenue heading south toward the FIU Main Campus Entrance on SW 8th Street. Once inside campus the route travels to the designated parking garage stop and circulates back outside of campus to travel north on NW 109th Avenue. The route then

turns right on W Flagler Street and left on NW 107th Avenue to travel northbound and complete the circulation. This alternative is 12.1 miles in length.

FIU Trolley Route Alternative 2

The second alternative provides a northern circulation to service NW 90th Street, Ronald W. Reagan Doral Sr. High School Islands at Doral, Landmark, and Midtown. The southern circulation services the FIU Engineering Center, the 109 Tower and the FIU Main Campus.

Route alignment is as follows: this alternative travels northbound along NW 107th Avenue turning westbound on NW 90th Street, southbound on NW 109th Court and eastbound on NW 82nd Street. It then turns right back onto NW 107th Avenue to travel southbound. The route continues traveling south on NW 107th Avenue until W Flagler Street. After turning westbound on W Flagler Street the route turns left on SW 109th Avenue heading south toward the FIU Main Campus Entrance on SW 8th Street. Once inside campus the route travels to the designated parking garage stop and circulates back outside of campus to travel north on NW 109th Avenue. The route then turns right on W Flagler Street and left on NW 107th Avenue to travel northbound and complete the circulation. This alternative is 14.6 miles in length.

FIU Trolley Route Alternative 3

The third alternative provides a northern circulation to service NW 90th Street, Ronald W. Reagan Doral Sr. High School, Islands at Doral, Landmark, and Midtown and servicing NW 102nd Avenue to Divine Savior Academy. The southern circulation services the FIU Engineering Center, the 109 Tower and the FIU Main Campus.

Route alignment is as follows: this alternative travels northbound along NW 107th Avenue turning eastbound on NW 90th Street, southbound on NW 102nd Avenue and westbound on NW 58th Street. It then turns left back onto NW 107th Avenue to travel southbound. The route continues traveling south on NW 107th Avenue until W Flagler Street. After turning westbound on W Flagler Street the route turns left on SW 109th Avenue heading south towards the FIU Main Campus

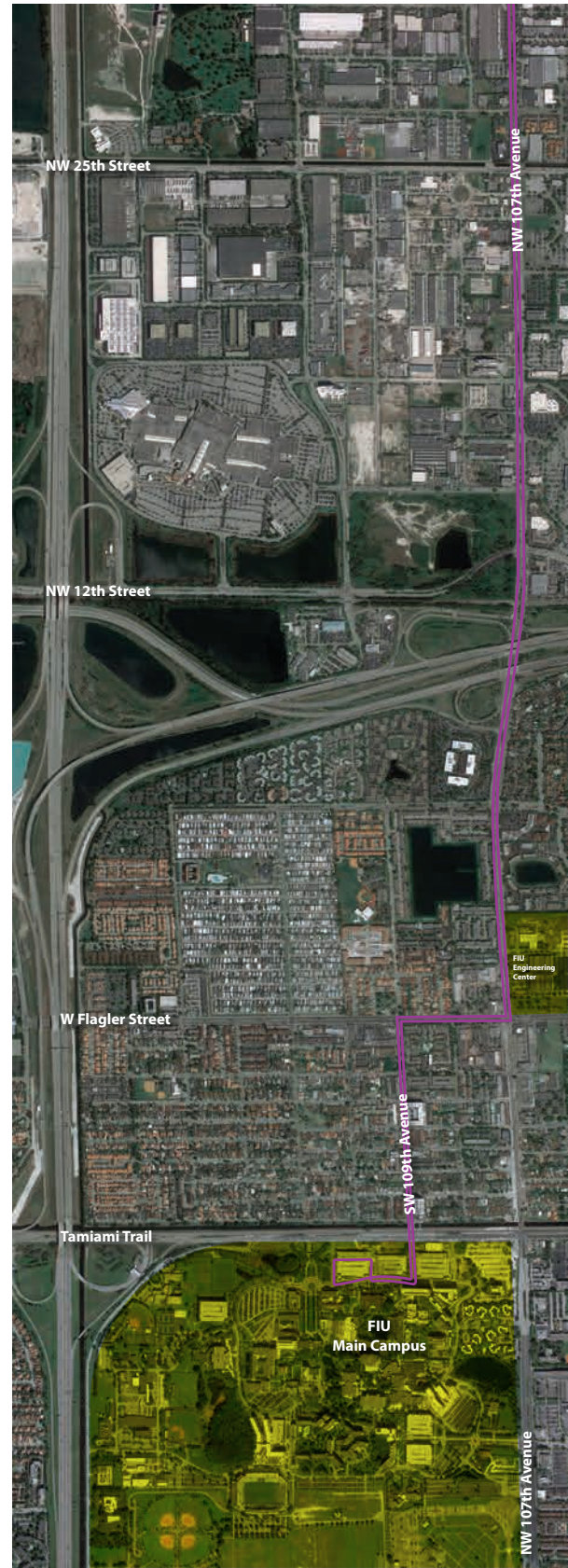
Entrance on SW 8th Street. Once inside campus the route travels to the designated parking garage stop and circulates back outside of campus to travel north on NW 109th Avenue. The route then turns right on W Flagler Street and left on NW 107th Avenue to travel northbound and complete the circulation. This alternative is 15.2 miles in length.



Florida International University

Exhibit 4

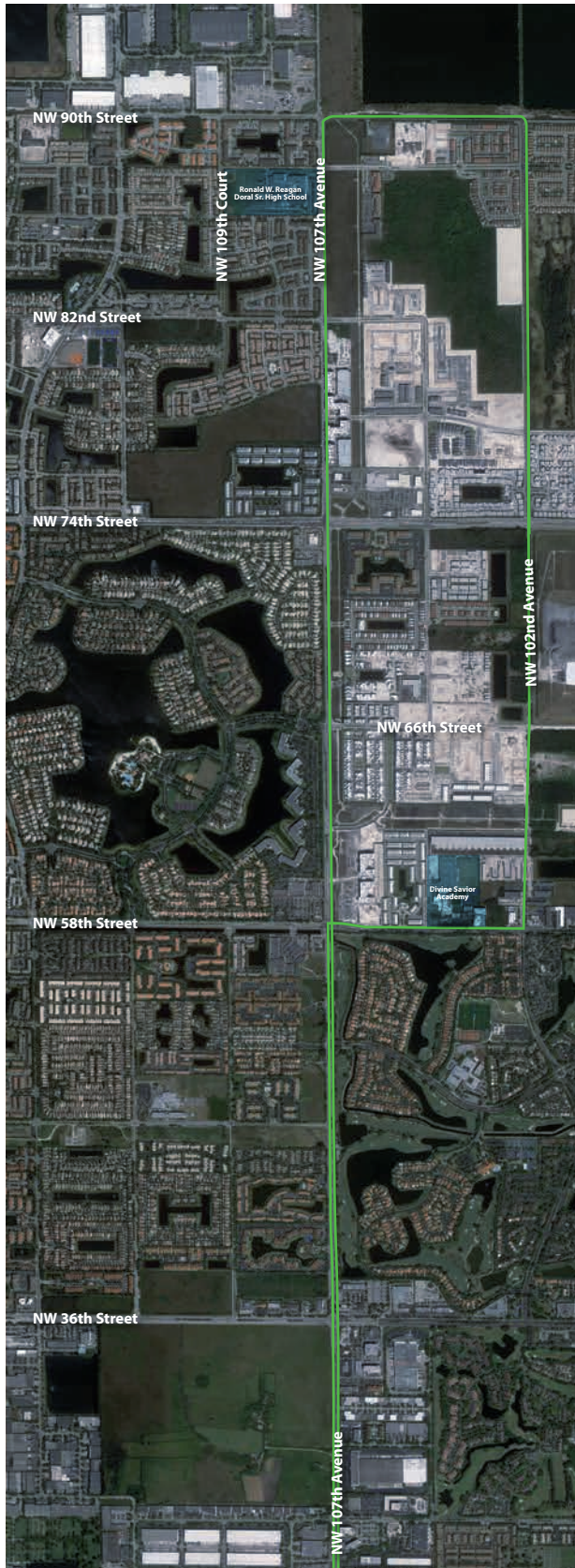
FIU Trolley Route Alternative 1



Florida International University

Exhibit 5

FIU Trolley Route Alternative 2



Florida International University

Exhibit 6

FIU Trolley Route Alternative 3

3.3 Travel Time Runs

Based on the three conceptual alternatives, travel time runs were conducted for each Route. The City provided one of its trolleys from its fleet of 11 to conduct travel time runs, since the trolleys maneuver differently than a passenger vehicle. Travel time runs were collected on Thursday, February 23, 2017. Data for each alternative was collected during the AM peak period (7:00 AM – 9:00 AM), Mid-day peak period (11:30 AM – 1:30 PM), and PM Peak period (4:00 PM – 6:00 PM).

It should be noted that for alternative 1 and alternative 3, the proposed route traverses a roadway segment that is currently closed. Therefore time was added to each of these segments based on travel time run collected on a roadway segment parallel and similar in distance. Detailed travel time run spreadsheets are included in Appendix B. The time it takes for each alternative to complete a roundtrip is shown in Exhibit 7.

Exhibit 7: Travel Time Run Results

Proposed FIU Trolley Routes	Calculated Travel Time (HH:MM:SS)		
	AM	MID-DAY	PM
Alternative 1	0:59:19	0:54:00	1:12:44
Alternative 2	1:06:31	1:02:05	1:26:03
Alternative 3	1:08:06	1:00:56	1:22:52

3.4 MDC Requirement

As described in the sections above, the proposed FIU Trolley will be connecting the City of Doral to FIU. Since the FIU Main Campus and FIU Engineering Center are both located outside of the city limits, the proposed route must meet the MDC requirement for circulator routes with segments outside city limits. Article 1 of the Interlocal Agreement between MDC and the City of Doral for Provision of Public Transportation Services states:

“Circulator” shall mean fixed route or semi-fixed route public transportation circulator services where at least seventy (70%) percent of the route is within the City and said circulator service is operated by the City, directly or by contract, pursuant to this Agreement and Chapter 31 of the code of Miami-Dade County.

The percent of alignment within City limits was calculated for each alternative and is shown in Exhibit 8. The results show that the proposed Alternative 1 is less than 70% within the city limits, hence not meeting the MDC requirement.

Exhibit 8: MDC Requirement for Circulators

Proposed FIU Trolley Routes	Total Route Distance (Miles)	Route Distance Outside City (Miles)	Percent Outside City Limits	Percent Inside City Limits	Meets MDC Requirement?
Alternative 1	12.1	4.38	36.2%	63.8%	NO
Alternative 2	14.6	4.38	30.0%	70.0%	YES
Alternative 3	15.2	4.38	28.8%	71.2%	YES

3.5 Ridership Estimates

As discussed earlier, one of the reasons for the success of the existing trolley system is its ability to attract a vast number of residents and employees within the area, and provide a direct connection to multiple commercial areas throughout the City of Doral. Therefore, when estimating the potential ridership of the proposed FIU Trolley Route, these criteria were considered.

The 2010 Southeast Florida Regional Planning Model (SERPM) was reviewed for population and employment estimates along the proposed route alternatives. For Alternative 1, a total of 35 Traffic Analysis Zones (TAZ) were considered. The model estimates that approximately 36,800 employees and residents are within 1-mile in either side of NW 107th Avenue between SW 16th Street and NW 66th Street. For Alternative 2, a total of 38 Traffic Analysis Zones (TAZ) were considered. The model estimates that approximately 48,700 employees and residents are within 1-mile in either side of NW 107th Avenue between SW 16th Street and NW 90th Street (west side circulation). For Alternative 3, a total of 38 Traffic Analysis Zones (TAZ) were considered. The model estimates that approximately 52,700 employees and residents are within 1-mile in either side of NW 107th Avenue between SW 16th Street and NW 90th Street (east side circulation). The number of employees and residents within the 1-mile distance is what is considered the potential riders. This number includes potential riders from FIU. In addition to the potential riders living and working in the area, there are bus riders using the MDT Routes (discussed in section 2.1) that could use the Doral trolley system as connectivity to their final destination.

To estimate the annual number of boardings per year that the proposed route could have, a percentage was applied to the number of potential riders. This is done because even though there are a large number of potential riders within the area of the route, the actual number of riders is smaller. A conservative 1% was applied to the total potential riders to estimate the total ridership. Based on this methodology, Alternative 1 will have 95,867, Alternative 2 will have 126,732 and

Alternative 3 will have 137,020 yearly boardings. SERPM model documentation and ridership calculations are included in Appendix D.

The distribution of FIU faculty, staff, and students living within the city limits was evaluated. Review of the “hot spots” maps provided by FIU show that there is high density of students living along NW 107th Avenue. This further establishes the potential riders in need of the proposed connection between the City of Doral and the FIU campuses. It should be noted, that the student maps shows that the highest density is concentrated on the west side of NW 107th Avenue. It is expected that with the future development of the east side of NW 107th Avenue, student/staff/faculty density will increase in that area. FIU faculty, staff, and students distribution maps are also included in Appendix D.

In addition to the targeted population along the corridor, there is a group of “bonus riders” that will also use the system. This group includes:

- Visitors to City of Doral and FIU who will be attracted to the service.
- Riders that are attracted to the service for the connectivity from the Doral Trolley system to MDC Transit Routes and the Palmetto Metrorail Station.
- Shoppers destined for Dolphin Mall, Miami International Mall, and CityPlace Doral.
- Area employees who have businesses at the Downtown Doral area and CityPlace Doral.

Because they are not specifically targeted, it is difficult to assess how many would be attracted at the new route. However, it can be safely assumed that this number would be small in comparison to the base riders.

3.6 Recommended Alternative

Three route alternatives were developed for the FIU Trolley Route. The evaluation matrix shown in Exhibit 9 was used to select the preferred alternative. After further analysis that included checking that each alternative meets the county requirement, travel time runs, ridership estimates, and coordination with the City, the Alternative 3 was recommended as the preferred route. Therefore, only Alternative 3 was considered in the remainder of this study.

Exhibit 9: Evaluation Matrix

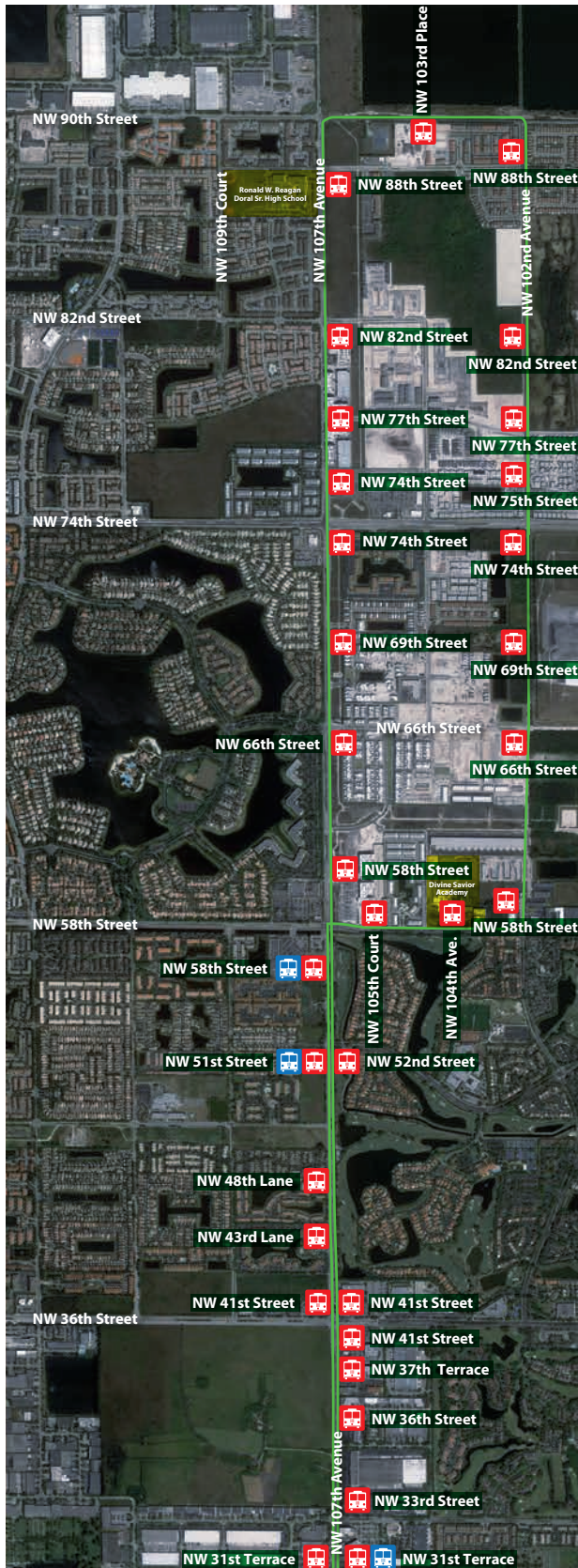
Pros / Cons	
Alternative 1	<p>Pros:</p> <ul style="list-style-type: none"> • Connects the City of Doral with FIU Main Campus and Engineering Campus • Provides Access to Commercial Uses along NW 107th Avenue • In close proximity to Students and Faculty “Hot Spots” <p>Cons:</p> <ul style="list-style-type: none"> • Does not meet the 70% Requirement from the MDC Interlocal Agreement
Alternative 2	<p>Pros:</p> <ul style="list-style-type: none"> • Connects the City of Doral with FIU Main Campus and Engineering Campus • Provides Access to Commercial Uses along NW 107th Avenue • In Close Proximity to Students “Hot Spots” • Meets the 70% Requirement from the MDC Interlocal Agreement <p>Cons:</p> <ul style="list-style-type: none"> • Overlaps with Existing Routes 1 and 3 (Blue and Green Routes) • Further Away From Faculty “Hot Spots”
Alternative 3	<p>Pros:</p> <ul style="list-style-type: none"> • Connects the City of Doral with FIU Main Campus and Engineering Campus • Provides Access to Commercial Uses along NW 107th Avenue • In Close Proximity to Students “Hot Spots” • Provides trolley service to an area currently not being service by the City Trolley • Meets the 70% Requirement from the MDC Interlocal Agreement • Provides service to the highest number of potential riders <p>Cons:</p> <ul style="list-style-type: none"> • Further Away From Faculty “Hot Spots” • Segment of NW 102 Avenue between NW 74 Street and NW 66 Street is not completed

3.6.1 Stop Locations

The proposed FIU Trolley Route Alternative 3 is intended to provide connection between the FIU Main Campus on SW 8th Street, the FIU Engineering Center on Flagler Street, and the City of Doral on the NW 107th Avenue corridor up to NW 90th Street. This alternative, travels north along NW 107th Avenue and turns east on NW 90th Street, serving the Ronald Regan Doral High School, the Divine Savior Academy, and the residential/commercial area currently being developed to the east of NW 107th Avenue. In order to provide connectivity, existing Miami-Dade Transit bus stops (discussed in section 2.1) and existing City of Doral trolley stops were used along the proposed alternative. Additional stops were also recommended along the route where there was a need of stops for near-by residential areas or commercial destinations and a lack of existing stops. It should be noted that two of the proposed stops are to service the FIU 109 Tower, which is located within the City of Sweetwater, therefore coordination with the City of Sweetwater is required. The existing and proposed trolley stops along the route are relatively closely-spaced and conveniently located in order to attract a high number of riders. The location of trolley stops is important since the distance that people are willing to walk to catch the circulator is generally proportional to the distance they wish to ride it. The preliminary trolley stop locations for Alternative 3 are shown in Exhibit 10. A list of the preliminary locations is also included in Appendix C.

3.6.2 Boarding Process

It is anticipated that the circulator will be a free service. Therefore boarding and alighting would be very quick and efficient, as patrons would be able to board without having to take time paying fares. Circulator systems of this type are generally well-patronized because they offer the promise of quicker service in addition to no fare. In some cases, the time savings achieved by offering free service can offset the need to acquire an additional vehicle or hire an additional driver.



Florida International University

Exhibit 10

Stop Locations



Existing Doral
Trolley Stop



Proposed FIU Route
Trolley Stop



3.6.3 Hours of Operations and Headways

The student/faculty class schedule at FIU begins early in the morning and since the proposed route primarily serves as a connection between FIU and the residential/commercial areas along NW 107th Avenue within the City, the proposed trolley is recommended to operate Monday through Friday from 6 A.M. to 11 P.M. Based on the travel time runs, it is recommended that the trolley operates at 30-45 minute headways.

3.7 Vehicular Requirements

The City currently has a trolley fleet of 11 biodiesel vehicles. Four of the vehicles are Specialty Vehicles and seven are Hometown Trolleys. Vehicles are equipped with seating capacity for 24-34 passengers, a wheelchair lift and capacity for two wheelchairs in the rear of the trolley. They are also equipped with bicycle racks, GPS, Wi-Fi, security cameras, automatic passenger counters, audio and visual destination signs.

As discussed in Section 3.6.3, the proposed FIU Trolley Route is to maintain approximately a 30-45 minute headway. In order to provide these headways, the FIU Trolley Route would require two additional vehicles. This would increase the existing 11 vehicles in the City's fleet to 13 vehicles.

3.8 Fare Structure

As with the existing trolley routes, the proposed FIU Trolley Route will be a free service. The benefits of having a free circulator system are apparent. Free fare gives the system the opportunity to maximize its ridership, reflecting the City's desire for a successful system. Also, there would be less potential for operational delays along the route. The desired headways would therefore be easier to maintain.

4.0 COSTS

Vehicle procurement is generally the largest capital cost. According to the City, the cost to purchase a new biodiesel vehicle is approximately \$175,000. In order to maintain the proposed 30-45 minute headways for Alternative 3, the route would require two vehicles, for a cost of \$350,000. Additional capital costs are required for trolley body wrapping and installation/purchase of technology. Based on City figures, it costs approximately \$15,000 per trolley for wrapping and technology. The total additional cost for both trolleys is \$30,000. Therefore the total capital cost of the proposed Alternative 3 with two trolley vehicles is approximately \$400,000. The annual operating and maintenance costs was estimated at approximately \$550,000. This is based on proposed hours of operations of Monday through Friday 6:00 AM to 11:00 PM (17 hours) for two trolley vehicles. The proposed FIU Trolley Route will have an annual technology service cost of approximately \$3,400 for the two trolleys. Exhibit 11 provides the breakdown of the costs associated with the FIU Trolley Route Alternative 3.

Exhibit 11
Proposed FIU Trolley Route Cost Breakdown

Item		Cost (per vehicle)	# Trolleys	Total Cost
Capital	Purchase of Trolley Vehicle	\$175,000	x 2	\$350,000
	Printing and Trolley Body Wrapping	\$8,000	x 2	\$16,000
	Purchase and Installation of Technology	\$7,000	x 2	\$14,000
	Total Capital Cost	\$190,000	x 2	\$380,000
Annual Operation & Maintenance Cost		\$275,000	x 2	\$550,000
Annual Technology Service Cost		\$1,680	x 2	\$3,360

Source: City of Doral

5.0 PUBLIC INVOLVEMENTS

In addition to several coordination meetings with City of Doral staff, City of Sweetwater and FIU, two public workshops were held. A FIU Trolley Route Workshop was held on June 28, 2017 at the FIU Main Campus. City of Doral Public Works Department, City of Doral Commissioner, City of Sweetwater staff were all represented. There was a high student attendance and several FIU departments were also represented. The three alternative routes were presented and discussed. Feedback/comments from FIU students, faculty and staff were collected and reviewed. A second workshop was held on September 5, 2017 at the Islands at Doral Clubhouse to present and discuss the proposed alternatives with Doral residents of the area. Event documentation is included in Appendix E. The proposed FIU Trolley Route Expansion Study was heard by City Council on November 8, 2017. The City Council approved the implementation of the recommended alternative Route 3. The City's Resolution No.17-206 is also included in Appendix E.

6.0 CONCLUSIONS AND RECOMMENDATIONS

A feasibility study to extend the existing City of Doral Trolley system has been completed. The purpose of the proposed route is to connect the City of Doral with the FIU Main Campus and the FIU Engineering Center, using NW 107th Avenue. The new route was developed considering population density, activity centers, interconnection to other transit systems, and coverage area. Existing Miami-Dade Transit service within the study area, as well as existing Doral Trolley Routes, Sweetwater Trolley Routes, and FIU Shuttles were reviewed and documented in order to provide connectivity to the new trolley route.

Three distinct alignments and route alternatives were developed for the FIU Trolley Route. After further analysis that included checking that each alternative meets the county requirement, travel time runs, ridership estimates, and coordination with the City, the Alternative 3 was recommended as the preferred alternative. Exhibit 12 provides a summary of the preferred FIU Trolley Route.

Exhibit 12

Proposed FIU Trolley Route			
Schedule	Weekday	Saturday	Sunday
Route Length	15.2 miles	Service not proposed	Service not proposed
No. of Trolleys	2		
Average Speed	11 mph		
Peak Hour Trolley Headways	30 – 45 minutes		
Off-Peak Hour Trolley Headways			
Service Span	6:00 AM – 11:00 PM		
Number of Stops	42		
Number of Stations	9		
Spacing between Stops	500 to 3500 feet		

The student/faculty class schedule at FIU begins early in the morning and since the proposed route primarily serves as a connection between FIU and the residential/commercial areas along NW 107th Avenue within the City of Doral, the proposed trolley is recommended to operate Monday through Friday from 6 A.M. to 11 P.M, with approximate 30-45 minute headways. It is estimated that Alternative 3 will have 137,020 yearly boardings. In order to maintain the proposed 30-45 minute headways, the FIU Trolley Route Alternative 3 would require two trolleys.

As with the existing trolley routes, the proposed FIU Trolley Route will be a free service. The benefits of having a free trolley system are apparent. Free fare gives the system the opportunity to maximize its ridership, reflecting the City's desire for a successful system. Also, there would be less potential for operational delays along the route. The desired headways would therefore be easier to maintain.

The costs of extending the trolley system were estimated based on information provided by the City. The approximate capital costs associated with the proposed route is \$400,000, the approximate annual operating and maintenance costs is \$550,000 and the approximate annual technology service costs is \$3,400.

Appendix A

Existing Transit

MDT Routes /Schedules / Ridership
FIU Shuttle
City of Sweetwater Circulator

MIAMI-DADE TRANSIT ROUTES (NW 107th AVENUE)

ROUTE	SCHEDULE		WAIT TIMES (PEAK HOUR)		DIRECTION	STOP
7	Weekday	5:30 AM	10:39 PM	40 min (30min)	NB	FOUNTAINBLEAU BD NW 107 AVE
	Saturday	6:30 AM	9:59 PM	40 min (40min)		NW 107 AV NW 12 ST
	Sunday	6:30 AM	9:29 PM	60 min (40min)		NW 14 ST NW 107 AV
	Weekday	4:41 AM	11:00 PM	40 min (30min)	SB	NW 107 AVE & 14 ST
	Saturday	5:51 AM	10:25 PM	40 min (40min)		NW 107 AV NW 14 ST
	Sunday	6:22 AM	9:54 PM	60 min (40min)		FOUNTAINBLEAU BD NW 107 AV
8	Weekday	4:37 AM	11:51 PM	60 min (15min)	NB	FIU MAIDIQUE CAMPUS BUS TERM
	Saturday	5:16 AM	10:55 PM	60 min (15min)		SW 107 AV #1431
	Sunday	5:17 AM	10:50 PM	60min (30 min)		SW 107 AV # 1225 SW 107 AV # 917
	Weekday	5:26 AM	12:47 AM	60 min (30min)	SB	SW 107 AV SW 11 ST
	Saturday	5:40 AM	11:53 PM	60 min (15min)		SW 107 AV SW 14 ST
	Sunday	6:00 AM	12:52 PM	-		FIU MAIDIQUE CAMPUS BUS TERM
11	Weekday	4:41 AM	4:55 AM	60 min (15min)	NB	FIU MAIDIQUE CAMPUS BUS TERM
	Saturday	5:11 AM	4:55 AM	60 min (30min)		SW 107 AV #1431
	Sunday	5:08 AM	4:55 AM	60 min (30min)		SW 107 AV # 1225 SW 107 AV # 917 SW 107 AV SW 6 ST SW 107 AVE & 4 ST W FLAGLER ST & SW 107 AVE
	Weekday	5:20 AM	5:53 AM	60 min (30min)	SB	SW 107 AVE & W FLAGLER ST
	Saturday	5:50 AM	5:51 AM	60 min (25min)		SW 107 AV SW 3 ST
	Sunday	5:55 AM	5:50 AM	60 min (30min)		SW 107 AV SW 5 ST SW 107 AV SW 7 ST SW 107 AV SW 11 ST SW 107 AV SW 14 ST FIU MAIDIQUE CAMPUS BUS TERM
24	Weekday	5:07 AM	12:01 AM	40 min (30 min)	NB	FIU MAIDIQUE CAMPUS BUS TERM
	Saturday	5:23 AM	11:53 PM	60 min (30min)		
	Sunday	5:22 AM	10:07 PM	60 min (30min)		
	Weekday	5:22 AM	12:40 AM	40 min (40 min)	SB	FIU MAIDIQUE CAMPUS BUS TERM
	Saturday	5:17 AM	12:44 AM	60 min (30min)		
	Sunday	5:16 AM	10:46 PM	60 min (30min)		
36B	Weekday	5:37 AM	9:59 PM	60 min (60min)	NB	NW 107 AV NW 15 ST NW 107 AV NW 19 ST NW 107 AV NW 25 ST NW 107 AV NW 27 ST NW 107 AV NW 31 TR NW 41 ST & 107 AVE
	Weekday	5:05 AM	9:06 PM	60 min (60min)	SB	NW 41 ST & 107 AVE NW 107 AV NW 31 TR NW 107 AV NW 27 ST NW 107 AV NW 24 ST NW 107 AV NW 19 ST NW 107 AV NW 15 ST NW 14 ST NW 107 AV
51	Weekday	-	-	-	NB	W FLAGLER ST & SW 107 AVE
	Weekday	5:59 AM	9:16 PM	30min (15min)	SB	W FLAGLER ST & NW 107 AVE

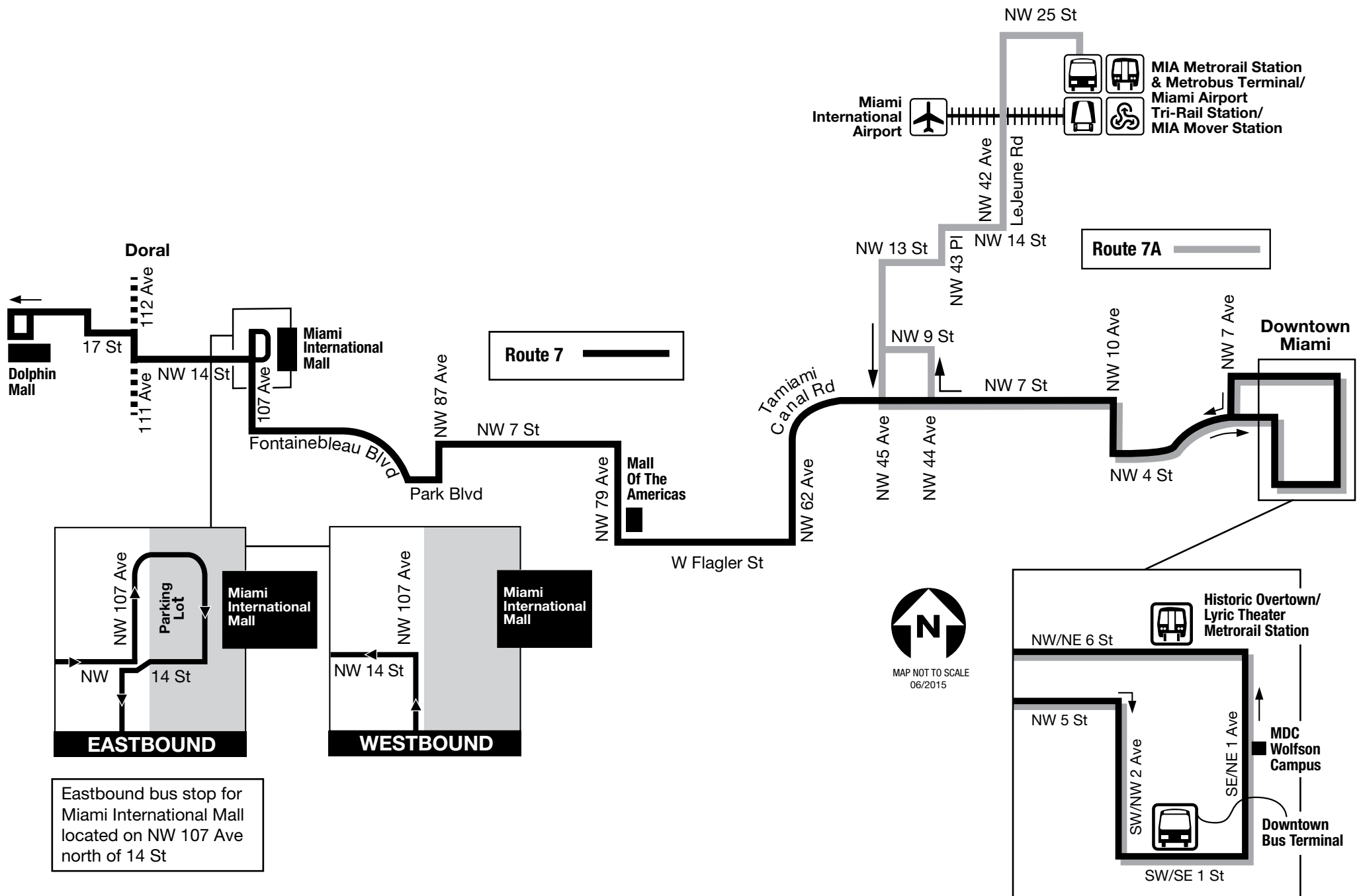
MIAMI-DADE TRANSIT ROUTES (NW 107th AVENUE)

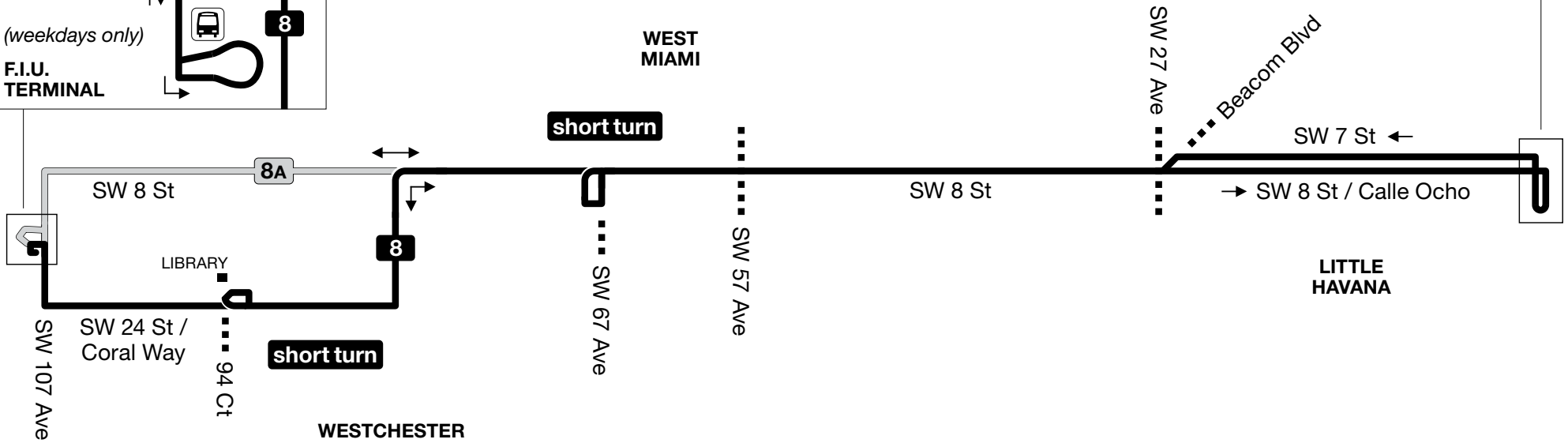
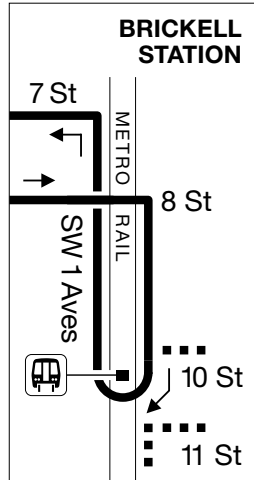
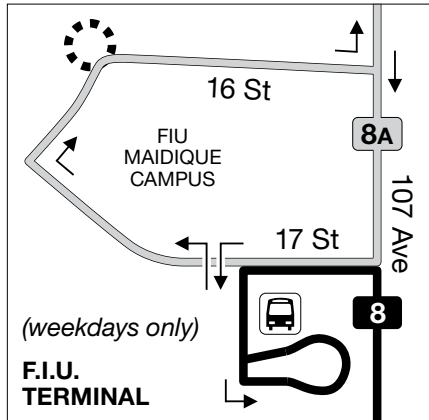
ROUTE	SCHEDULE		WAIT TIMES (PEAK HOUR)		DIRECTION	STOP
71	Weekday	6:36 AM	8:22 PM	65 min (30 min)	NB	FIU MAIDIQUE CAMPUS BUS TERM
	Saturday	7:14 AM	6:11 PM	60 min (60 min)		SW 107 AV #1431
	Sunday	9:35 AM	6:26 PM	60 min (60 min)		SW 107 AV # 1225
						SW 107 AV # 917
						SW 107 AV SW 6 ST
						SW 4 ST SW 107 AV
82						NW 107 AV NW 12 ST
						NW 14 ST NW 107 AV
	Weekday	6:09 AM	8:40 PM	65 min (30min)	SB	NW 107 AV NW 15 ST
	Saturday	7:00 AM	7:10 PM	60 min (60 min)		NW 107 AV NW 14 ST
	Sunday	9:37 AM	6:28 PM	60 min (60 min)		NW 7 ST NW 107 AVE
						SW 4 ST SW 107 AV
137						SW 107 AV SW 5 ST
						SW 107 AV SW 7 ST
						SW 107 AV SW 11 ST
						SW 107 AV SW 14 ST
						FIU MAIDIQUE CAMPUS BUS TERM
212	Weekday	8:30 AM	5:01 PM	60 min (60min)	NB	FIU MAIDIQUE CAMPUS BUS TERM
	Weekday	8:00 AM	5:30 PM	60 min (60min)	SB	FIU MAIDIQUE CAMPUS BUS TERM
	Weekday	5:35 AM	9:27 PM	45 min (30min)	NB	NW 107 AV FLAGLER ST
	Saturday	5:30 AM	9:51 PM	45 min (40min)		NW 107 AV FLAGLER ST
	Sunday	5:30 AM	9:49 PM	45 min (40min)		-
	Weekday	5:25 AM	10:28 PM	45 min (30min)	SB	NW 107 AVE & 14 ST
238	Saturday	6:05 AM	10:26 PM	45 min (40min)		NW 107 AV NW 14 ST
	Sunday	6:10 AM	10:21 PM	45 min (40min)		NW 107 AV NW 7 ST
						NW 107 AV # 322
						NW 107 AV # 230
						W FLAGLER ST & NW 107 AVE
338	Weekday	9:21 AM	3:00 PM	30 min (30 min)	NB	SW 4 ST SW 107 AV
						SW 107 AVE & 4 ST
						W FLAGLER ST & NW 107 AVE
	Weekday	9:00 AM	3:13 PM	30 min (30 min)	SB	SW 107 AVE & W FLAGLER ST
						SW 107 AV SW 3 ST
						SW 4 ST SW 107 AV
71	Weekday	6:30 AM	8:21 PM	60 min (45min)	NB	NW 107 AV & NW 14 ST
						NW 107 AV & NW 15 ST
						NW 107 AV & NW 19 ST
						NW 107 AV & NW 25 ST
	Weekday	6:55 AM	8:15 PM	60 min (45 min)	SB	NW 107 AV NW 24 ST
						NW 107 AV NW 19 ST
						NW 107 AV NW 15 ST
82						NW 14 ST NW 107 AV
	Saturday	11:00 AM	7:25 PM	60 min (60min)	NB	-
	Sunday	11:00 AM	7:25 PM			-
	Saturday	11:25 AM	7:49 PM	60 min (60min)		NW 107 AV & NW 14 ST
	Sunday	11:25 AM	7:49 PM		SB	

NORTHBOUND STOPS				MIAMI-DADE TRANSIT ROUTES										NOTES
		7	8	11	24	36B	51	71	82	137	212	238	338	
1	FIU MAIDIQUE CAMPUS BUS TERM		8	11	24			71	82					on SW 4 St on Flager E of NW 107 Ave on Flager W of NW 107 Ave on Fountainebleue Blvd on NW 14 St
2	SW 107 AV #1431		8	11				71						
3	SW 107 AV # 1225		8	11				71						
4	SW 107 AV # 917		8	11				71						
5	SW 107 AV SW 6 ST			11				71						
6	SW 107 AVE & 4 ST			11							212			
7	SW 4 ST SW 107 AV							71			212			
8	W FLAGLER ST & SW 107 AVE			11			51							
9	W FLAGLER ST & SW 107 AVE										212			
10	FOUNTAINBLEAU BD NW 107 AVE	7												
11	NW 107 AV FLAGLER ST									137				
12	NW 107 AV FLAGLER ST									137				
13	NW 107 AV NW 12 ST	7						71						
14	NW 14 ST NW 107 AV	7						71						
15	NW 107 AV NW 14 ST											238		
16	NW 107 AV NW 15 ST					36						238		
17	NW 107 AV NW 19 ST					36						238		
18	NW 107 AV NW 25 ST					36						238		
19	NW 107 AV & NW 25 ST					36								
20	NW 107 AV NW 27 ST					36								
21	NW 107 AV NW 31 TR					36								
22	NW 41 ST & 107 AVE					36								

SOUTHBOUND STOPS		MIAMI-DADE TRANSIT ROUTES											NOTES	
		7	8	11	24	36	51	71	82	137	212	238		338
1	NW 41 ST & 107 AVE					36								on NW 41 St
2	NW 107 AV NW 31 TR					36								
3	NW 107 AV NW 27 ST					36								
4	NW 107 AV NW 24 ST					36						238		
5	NW 107 AV NW 19 ST					36						238		
6	NW 107 AV NW 15 ST					36		71				238		
7	NW 14 ST NW 107 AV					36						238		
8	NW 107 AV & NW 14 ST	7								137				
9	NW 107 AV NW 14 ST	7						71		137				
10	FOUNTAINBLEAU BD NW 107 AV	7												
11	NW 7 ST NW 107 AVE							71						on NW 14 St north of NW 14 St south of NW 14 st on Fountainebleue Blvd on NW 7 St
12	NW 107 AV NW 7 ST									137				
13	NW 107 AV # 322									137				
14	NW 107 AV # 230									137				
15	W FLAGLER ST & NW 107 AVE						51			137				
16	SW 107 AVE & W FLAGLER ST			11							212			
17	SW 107 AV SW 3 ST			11							212			
18	SW 4 ST SW 107 AV							71			212			
19	SW 107 AV SW 5 ST			11				71						
20	SW 107 AV SW 7 ST			11				71						
21	SW 107 AV SW 11 ST		8	11				71						
22	SW 107 AV SW 14 ST		8	11				71						
23	FIU MAIDIQUE CAMPUS BUS TERM		8	11	24			71	82					

Route 7





NORTH
06/2016

www.miamidade.gov/transit **311** (305.468.5900) TDD: 305.468.5402

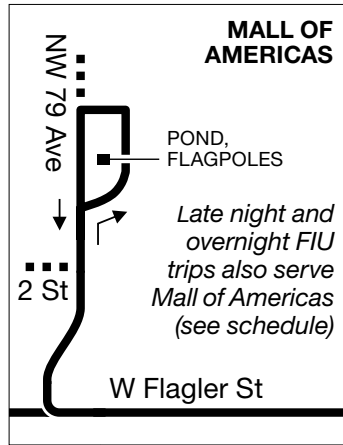
MiamiDadeTransit @IRideMDT @IRideMDT MDT TRACKER / MDT TRANSIT WATCH



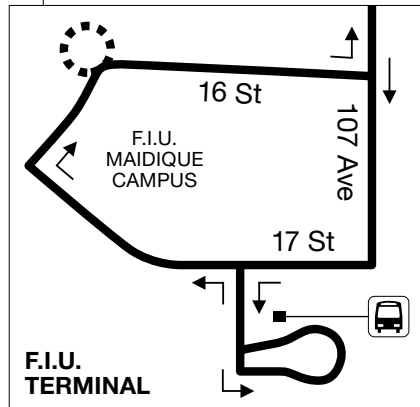
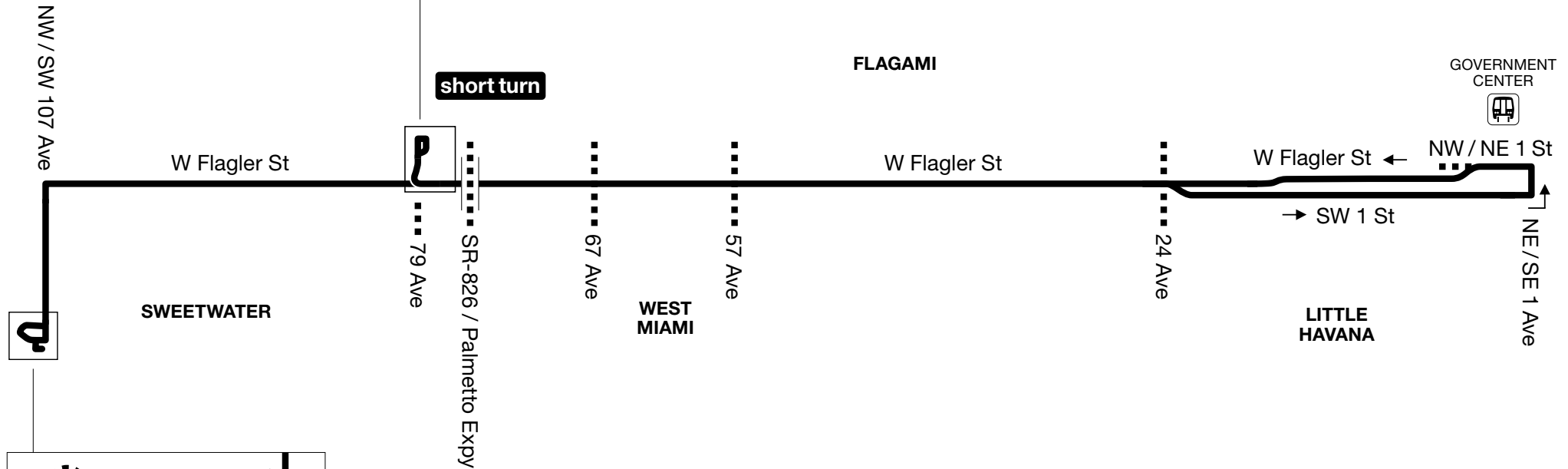
DEPARTMENT OF TRANSPORTATION AND PUBLIC WORKS



11



short turn



NORTH
06/2016



DEPARTMENT OF TRANSPORTATION AND PUBLIC WORKS

www.miamidade.gov/transit

311 (305.468.5900) TDD: 305.468.5402



MiamiDadeTransit



@IRideMDT



@IRideMDT



Download on the App Store



GET IT ON Google Play

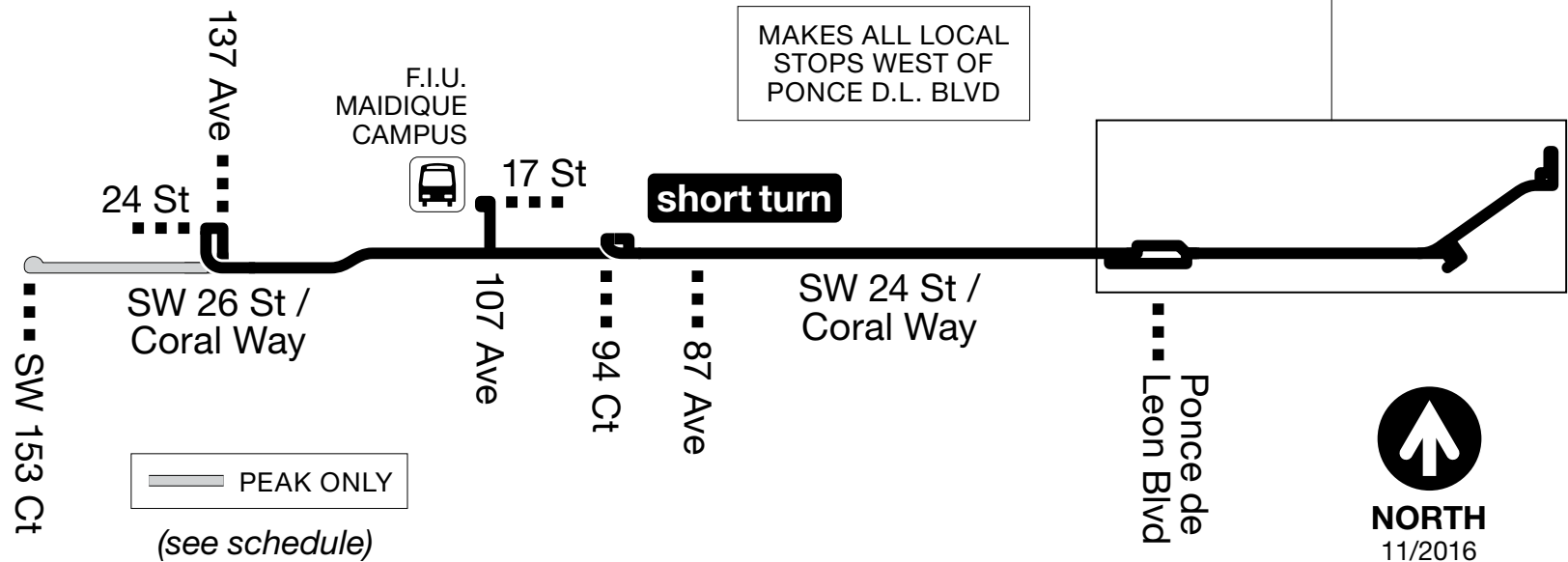
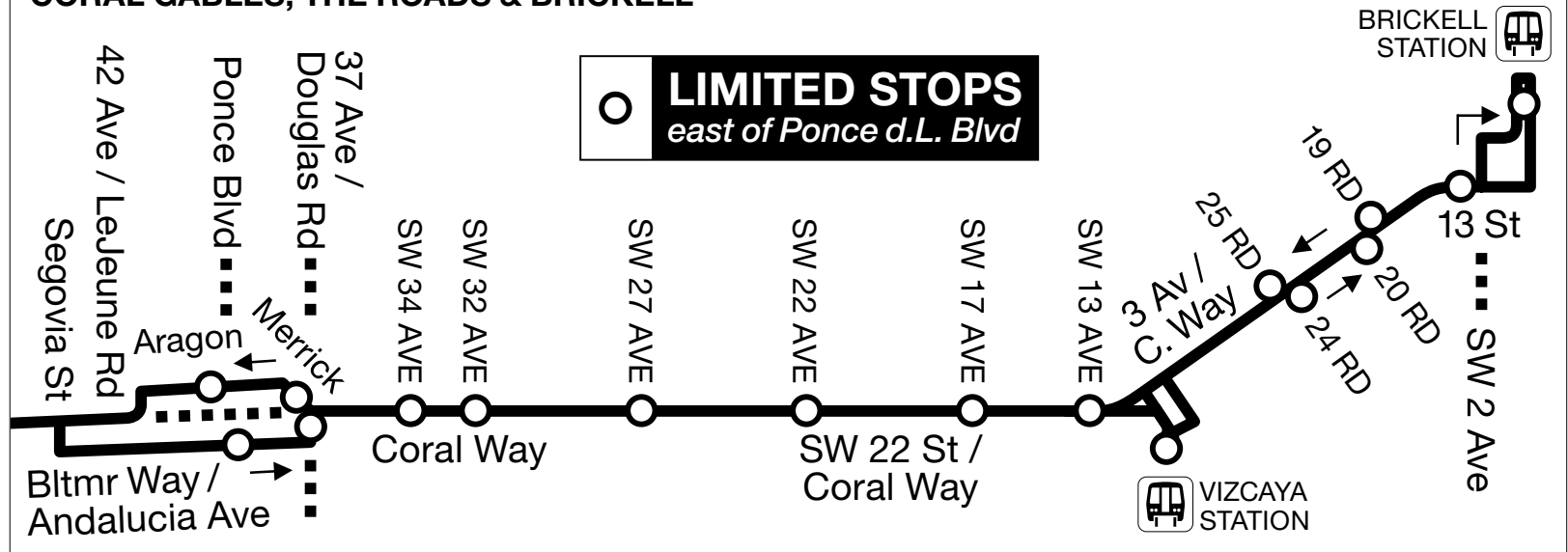
MDT TRACKER / MDT TRANSIT WATCH



24

CORAL WAY LIMITED

CORAL GABLES, THE ROADS & BRICKELL



www.miamidade.gov/transit DEPARTMENT OF TRANSPORTATION AND PUBLIC WORKS



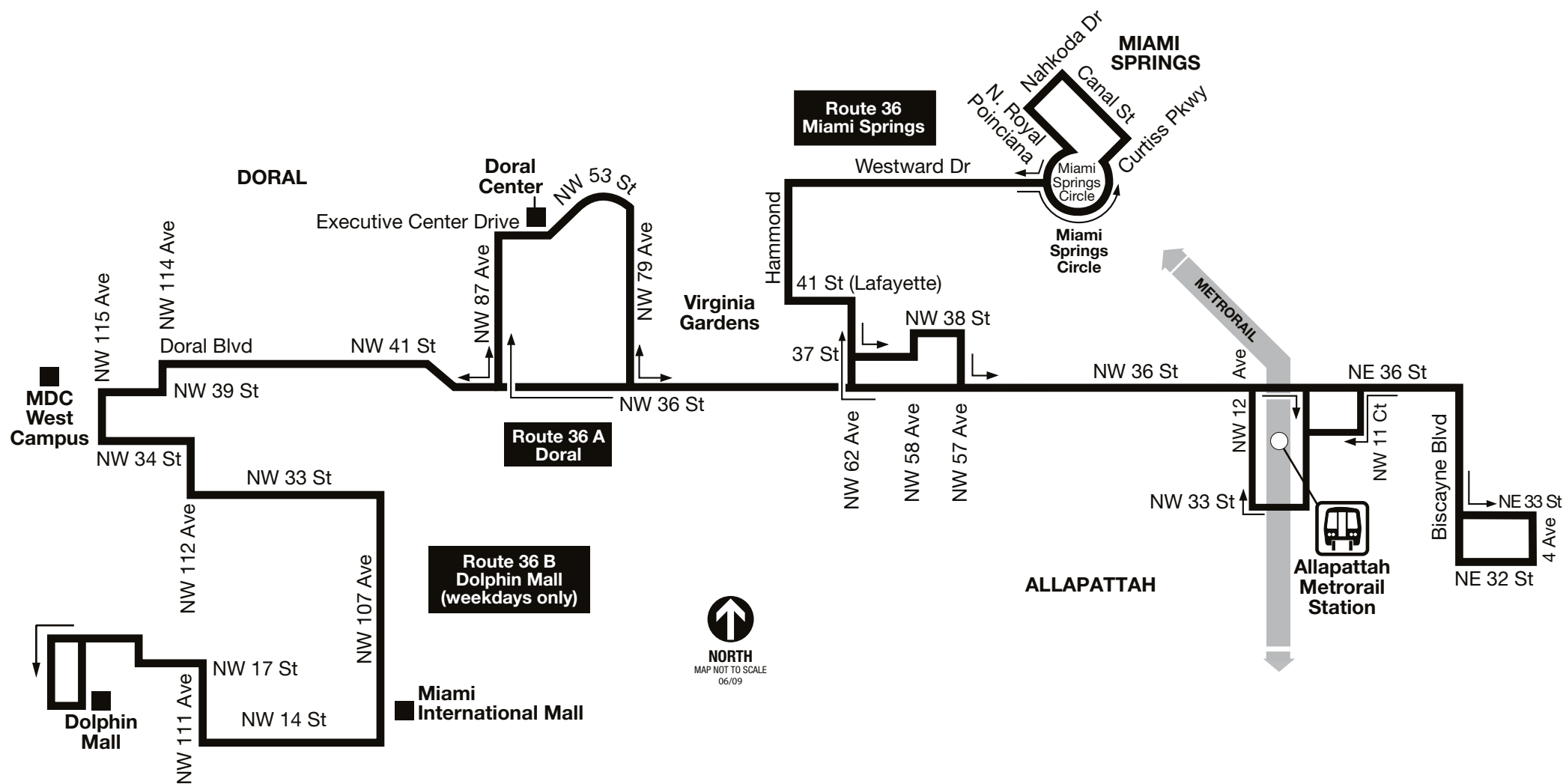
MDT TRACKER | EASY PAY MIAMI | MDT TRANSIT WATCH



311 (305.468.5900) TDD: 305.468.5402



Route 36



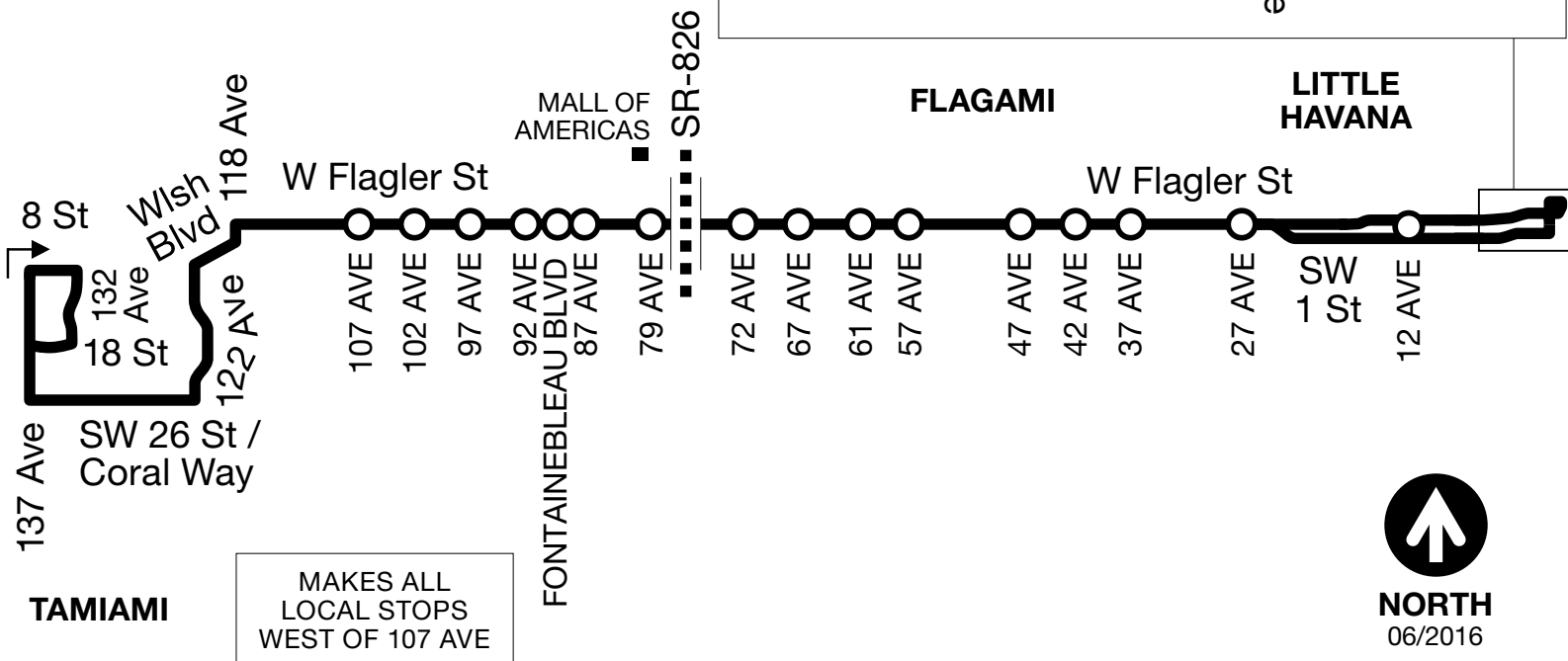
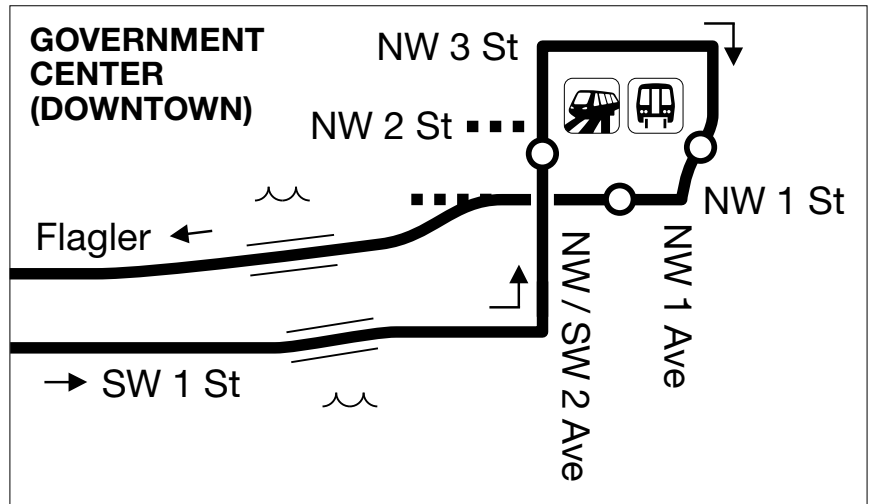


51

FLAGLER MAX



LIMITED STOPS
Downtown to 107 Ave



NORTH
06/2016

www.miamidade.gov/transit

311 (305.468.5900) TDD: 305.468.5402



MiamiDadeTransit



@IRideMDT



@IRideMDT

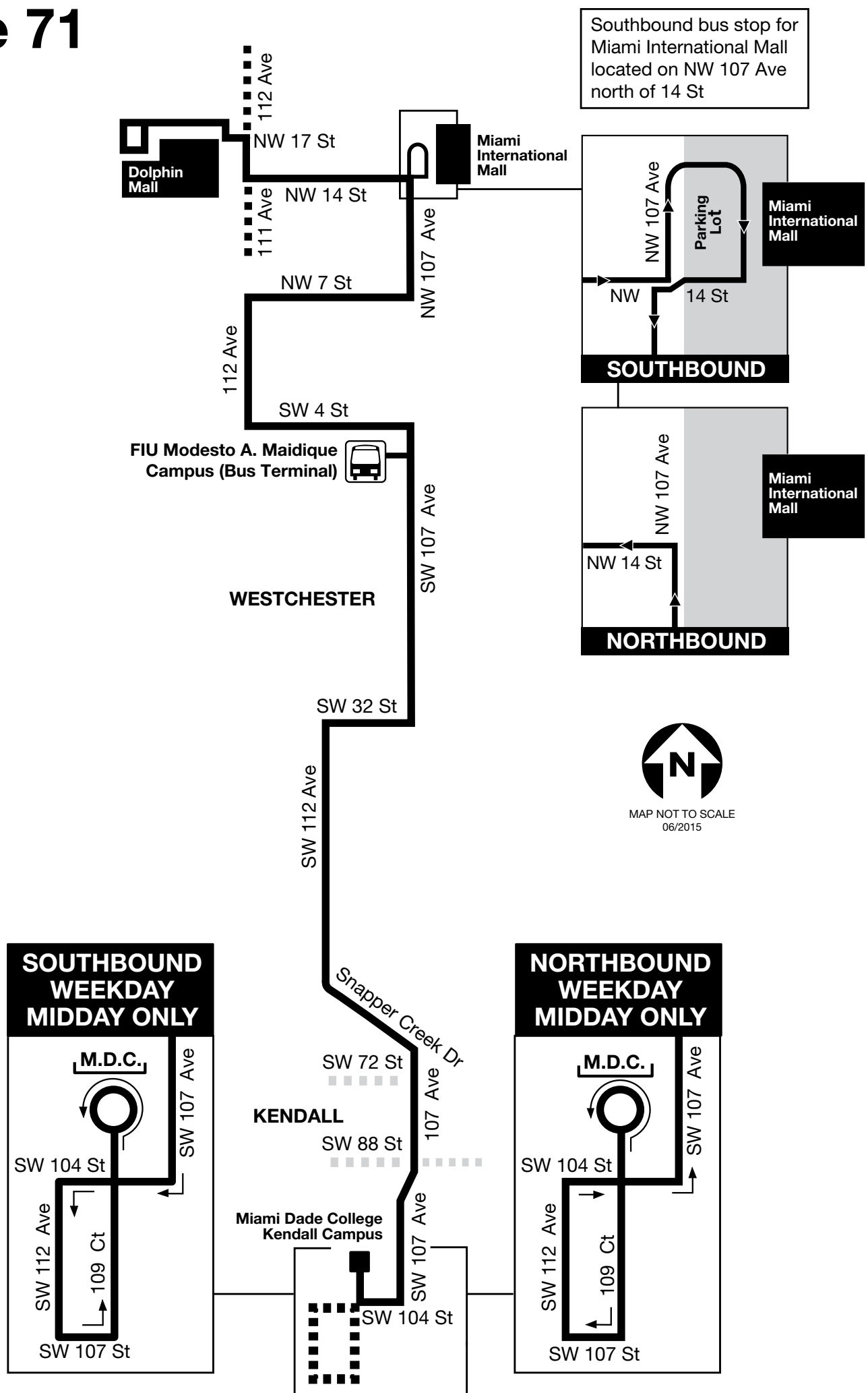


MDT TRACKER / MDT TRANSIT WATCH



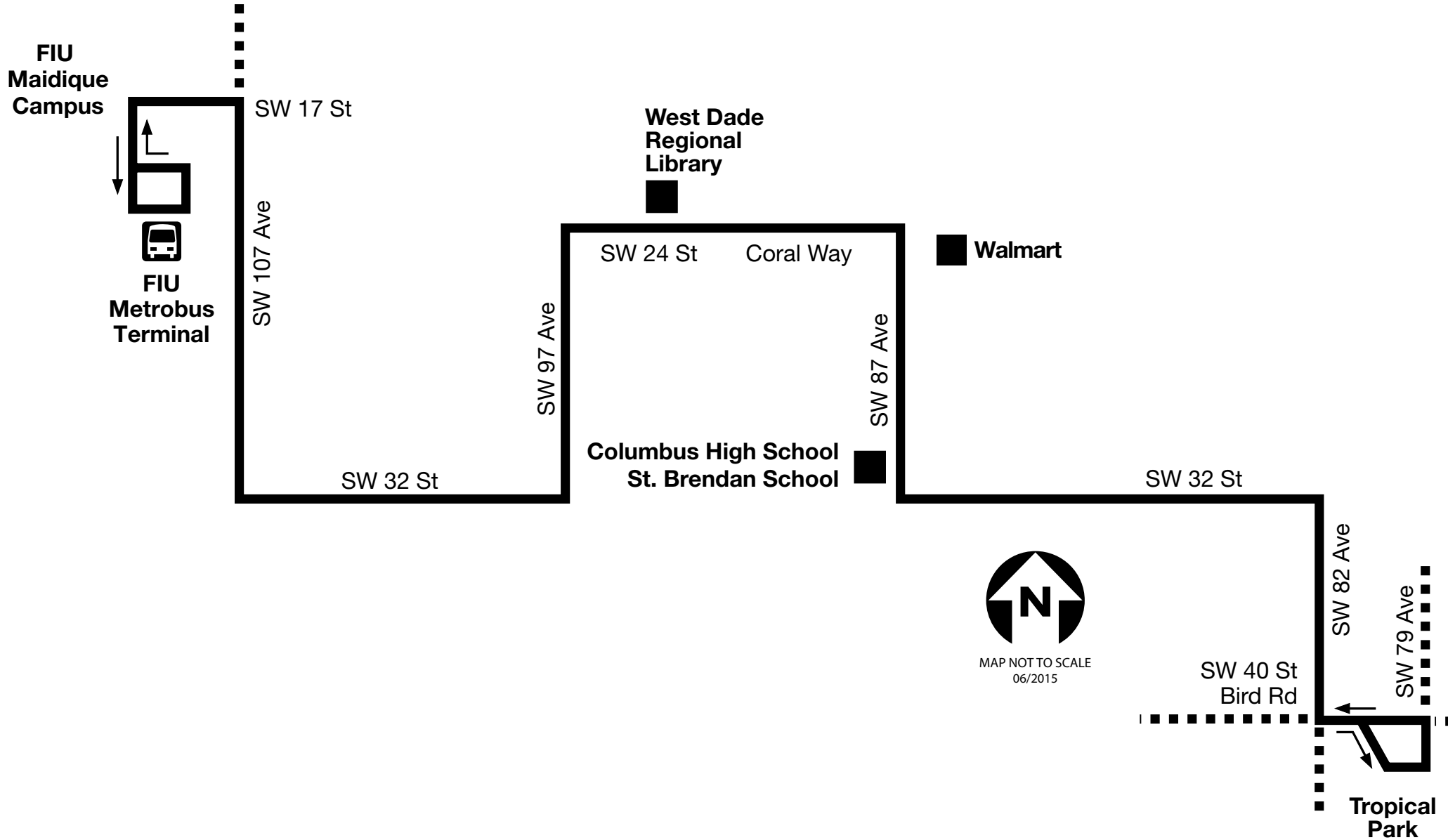
DEPARTMENT OF TRANSPORTATION AND PUBLIC WORKS

Route 71



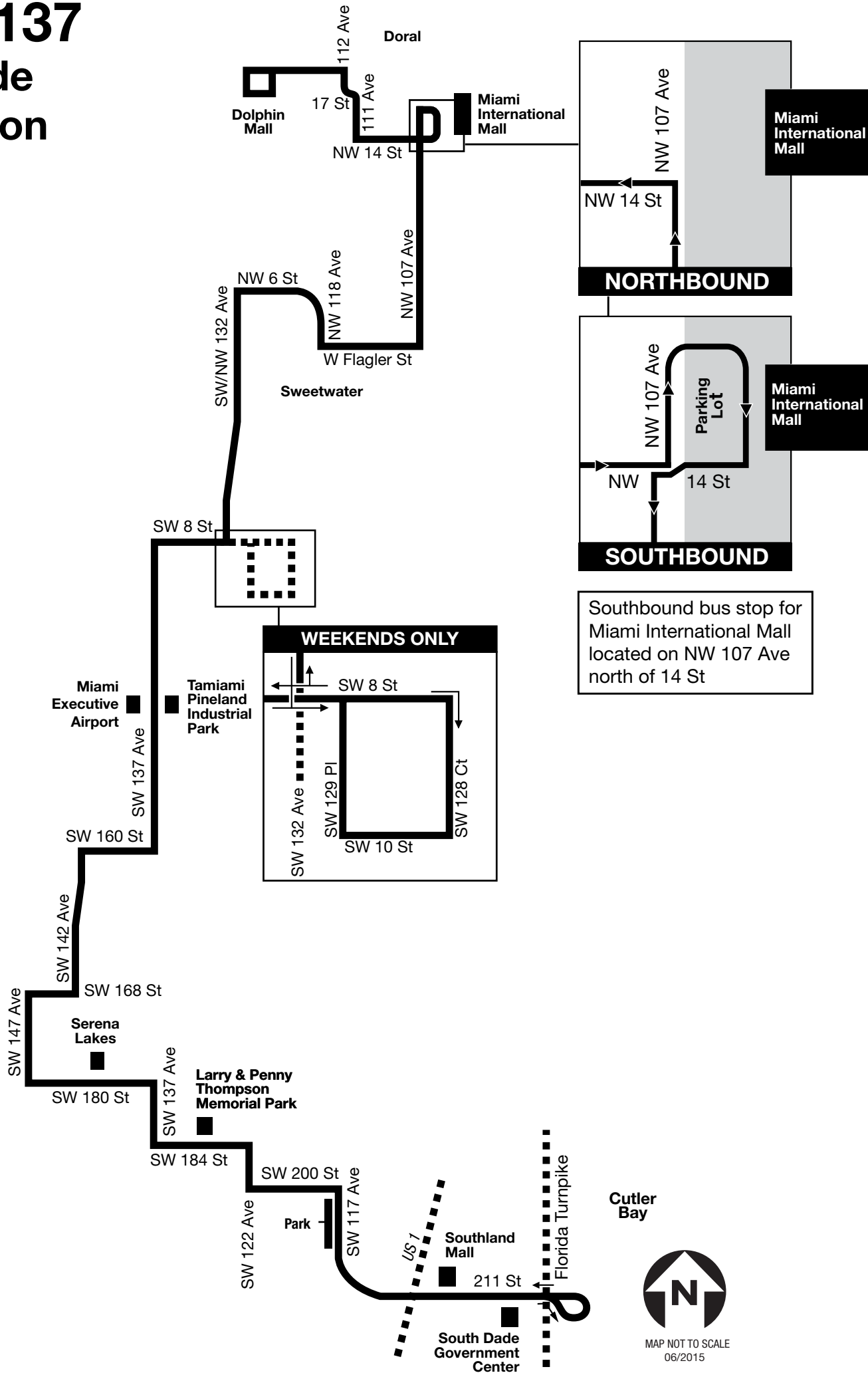
WESTCHESTER

Circulator



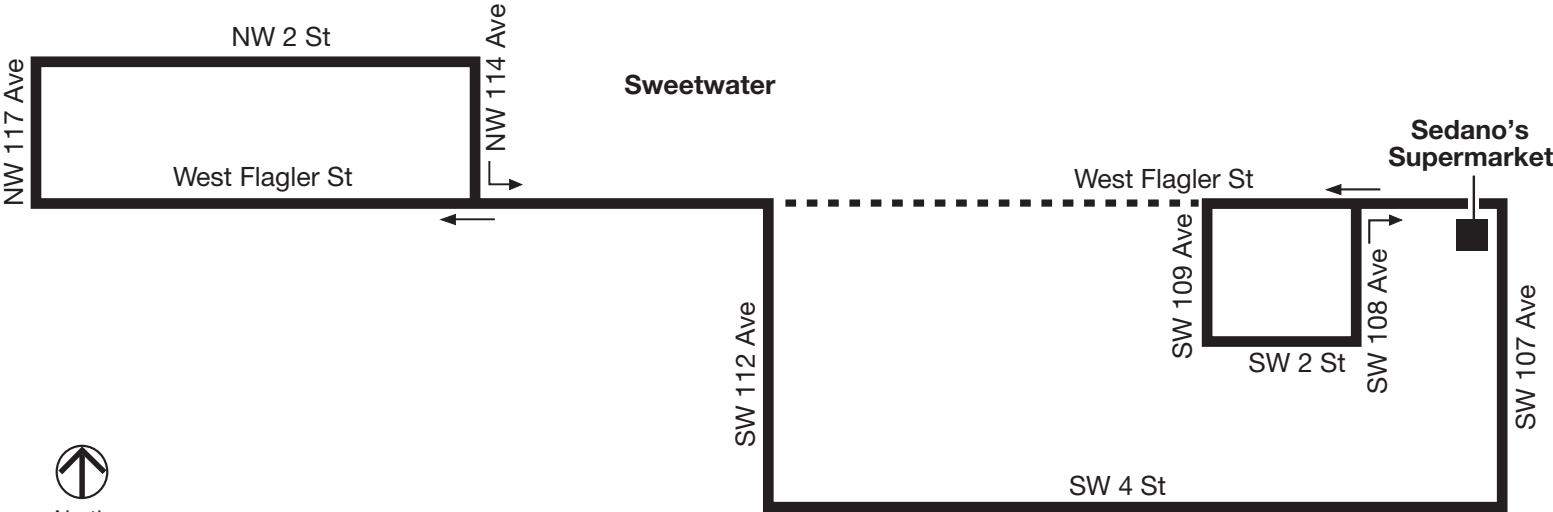
Route 137

West Dade Connection



Route 212

Sweetwater Circulator

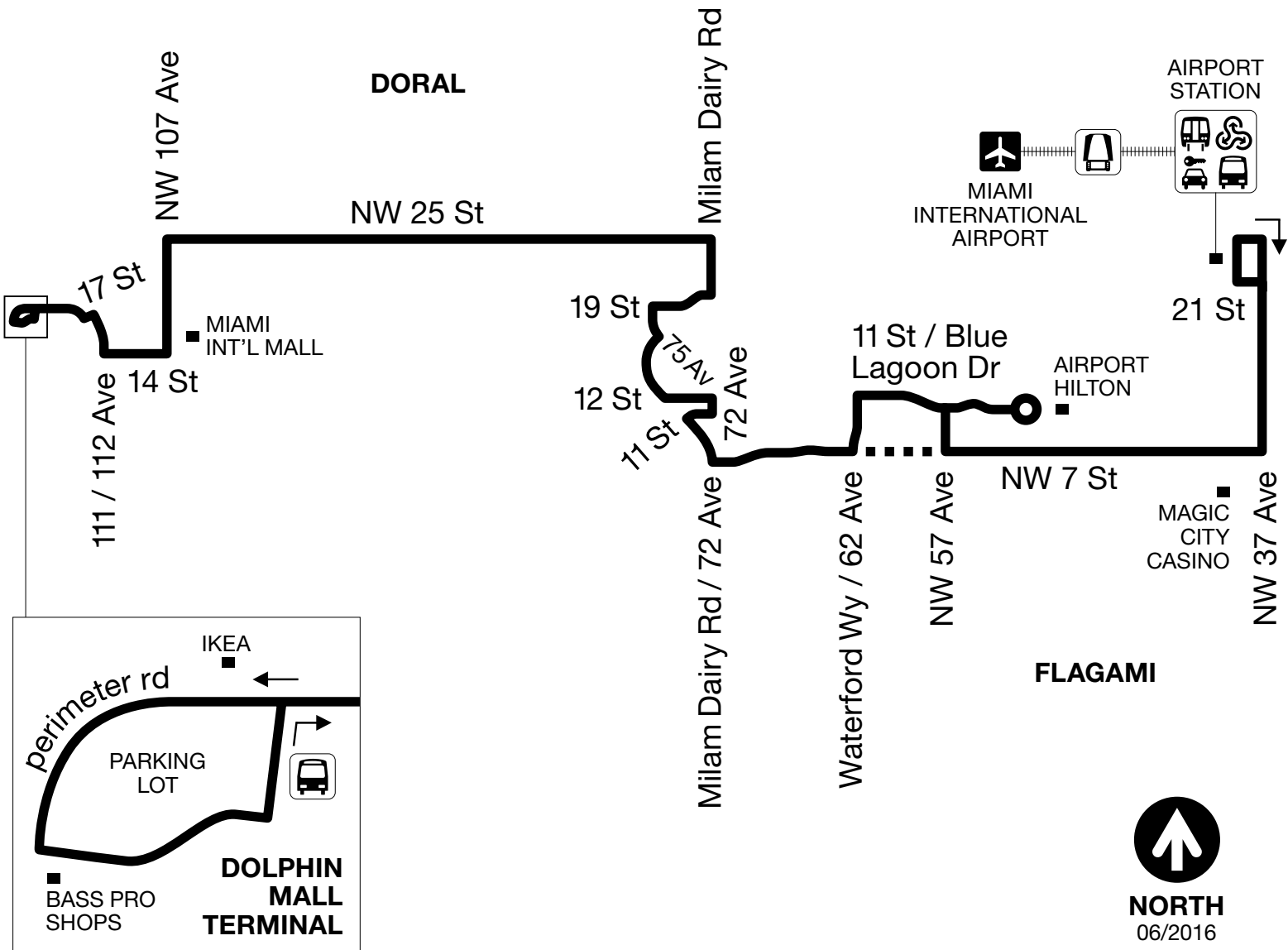


North
Map not to scale
6/08



238

EAST-WEST
CONNECTION



www.miamidade.gov/transit

311 (305.468.5900) TDD: 305.468.5402

MiamiDadeTransit

@IRideMDT

@IRideMDT

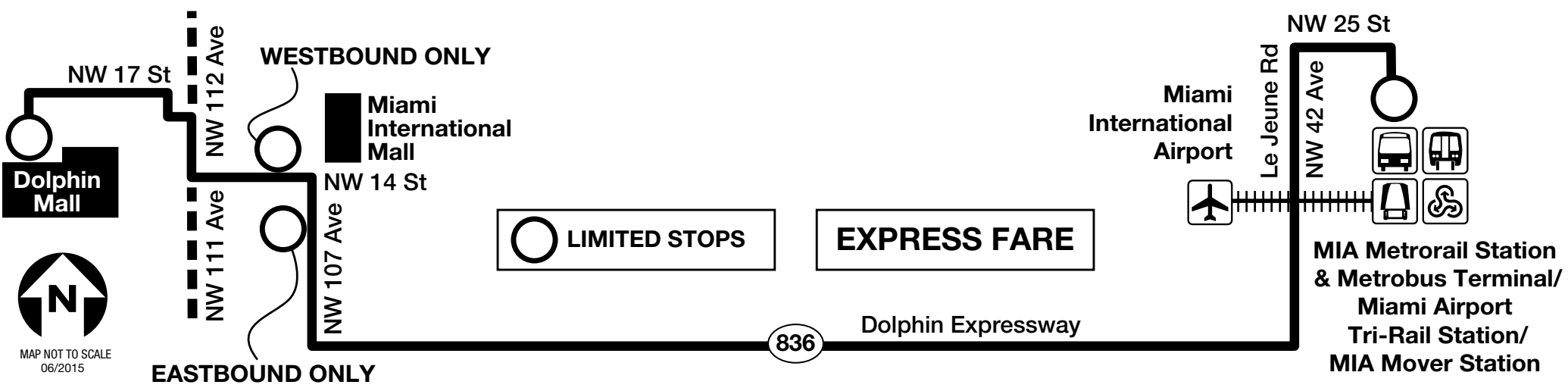
MDT TRACKER / MDT TRANSIT WATCH



DEPARTMENT OF TRANSPORTATION AND PUBLIC WORKS

Route 338

Weekend Express



Service

The CATS shuttle travels between Modesto A. Maidique Campus and the Engineering Center. The service operates two shuttles from 6:00am-11:00pm, with departures every 15 minutes at the top of the hour starting at 6:00am from MMC and starting at 6:17am from EC. All shuttles will provide additional stops east of PG5, the Miami-Dade transit hub located at 107th Ave and 17th street, and at the new housing towers in the City of Sweetwater.

Schedule

<p>Roundtrip: GC-EC: 17 min EC-GC 13 min</p>	<p>AVERAGE TIME</p> <p>Between stops: GC-PG5: 3 min PG5-109 Tower: 2 min 109 Tower-4th St Apt: 2 min 4th St Apt-EC: 10 min EC-MD Transit Hub: 10 min</p>	<p>Monday-Friday 6am-11pm Every 15 min from GC starting at 6am Every 15 min from EC starting at 6:17am</p>
--	---	---

Did you Know?

Shuttles do not operate on non-class days and during semester breaks

- Martin Luther King, Jr. January 16, 2017
- Memorial Day May 29, 2017
- Independence Day July 4, 2017
- Labor Day September 4, 2017
- Veterans Day November 10, 2017
- Thanksgiving November 23, 2017






On-Campus Options



THE OFFICIAL WEBSITE FOR THE MUNICIPAL GOVERNMENT OF SWEETWATER, FL

 navigation



CONTACT US

[Administration \(administration.htm\)](#)

[Police \(police.htm\)](#)

[Finance \(finance.htm\)](#)

[Elderly Program \(elderly.htm\)](#)

[Human Resources \(humanresources.html\)](#)

[Parks & Recreation \(parks.htm\)](#)

[Public Works \(public-works.html\)](#)

[Maintenance \(maintenance.htm\)](#)

[Special Projects \(projects.htm\)](#)

[Building & Zoning \(building-zoning.html\)](#)

IMPORTANT LINKS

[City Charter and Code of Ordinances \(http://www.municode.com/Resources/gateway.asp?pid=10062&sid=9.\)](http://www.municode.com/Resources/gateway.asp?pid=10062&sid=9.)

Stay Connected

(https://\ (https://\ (https://\i
of-
Sweetw
Florida/

Community Information

City of Sweetwater Transit Schedule

The trolley services are free and open to the public. This route have been thoughtfully designed to provide every hour and a half, a reliable transportation to all of Sweetwater’s most popular locations, such as, Dolphin Mall, parks and the Sweetwater Municipal Complex. For the Trolley route we have also taken into consideration that there are locations on the fringes of the city’s borders that are also popular destinations and have included stops in Florida International University and International Mall.

The trolley service route runs from 8:00 am to 7:00 p.m. Monday through Friday and from 8:30 am to 5:00 pm. Saturday and Sunday. The trolley service does not run on Thanksgiving, Christmas day and New Year’s. The Trolley runs from 8:30 am to 5:00 pm on other legal holidays.

The Trolley Route starts in Sweetwater Maintenance and Transit Department, 1701 NW 110TH Avenue, every hour and a half beginning at the designated weekday and weekend hours. Please see the detailed schedule.

Routes are subject to change depending on rider input.

Please email us at trolley@cityofsweetwater.fl.gov (mailto:trolley@cityofsweetwater.fl.gov) or call [305-633-0891](tel:305-633-0891) for questions, comments and to request the most updated trolley schedule.

Servicio de Trolley

Los servicios de los Trolleys son Gratuitos y abiertos al público. Esta ruta ha sido cuidadosamente diseñada para proporcionar cada hora y media, un transporte confiable a todos los lugares más populares de La Ciudad de Sweetwater, por ejemplo, Dolphin Mall, parques y los complejos Municipales de La Ciudad de Sweetwater.

Para la ruta del Trolley también se han tomado en consideración que hay lugares en los márgenes de las fronteras de la Ciudad que también son destinos populares y se han incluido paradas en Florida International University (FIU) y el centro comercial International Mall.

La ruta de servicio de Trolley, corre de:

- 8:00 am a 7:00 pm de Lunes a Viernes
- 8:30 a 5:00 pm de Sábado a Domingos

El servicio de Trolley no trabaja el día de acción de Gracias, navidad y año nuevo y funciona de 8:30 a 5:00 pm y en los otros días de fiesta legales. La ruta del Trolley comienza en el Departamento de Mantenimiento y Transito de la Ciudad de Sweetwater, 1701 NW 110 Avenida, cada hora y media.

Por favor vea el horario. Las rutas están sujetas a cambios dependiendo de su participación. Por favor escribanos a trolley@cityofsweetwater.fl.gov o llame al 786-507-4850 para preguntas, comentarios y solicitar el calendario más actualizado de Trolley.

Transit Routes (last updated January 2014)
1701 NW 110 Ave - City of Sweetwater Maintenance and transit Dept.
1701 NW 112th Avenue - Sweetwater Code Enforcement and Building and Zoning
11401 NW 12th St - DOLPHIN MALL
Entry #8 Trio
Entry #7 Bloomindaes' - The Outlet Store
Burlington Coat Factory
Entry #5 Dolphin Mall
Marshall / Home Goods
Entry #4 - Sacks Fifth Avenue Outlet.
ROSS
Main Entrance Texas Brazil and Cheesecake Factory
Entry #2 - Old Navy.
Bass Pro Shop.
DOLPHIN MALL Miami-Dade Main Bus Stop
1801 NW 117th Avenue - IKEA
11698 NW 25th St - US Postal Service

11411 NW 25th St - Our Lady of Mercy Catholic Cemetary
10730 NW 25th St La Covacha
2390 NW 107th Avenue - Midas
1890 NW 107th Avenue - BP gas station/ MD bus stop
1500 NW 107th Avenue - County Federal Credit Union
1414 NW 107th Avenue - MD bus stop
1390 NW 107th Avenue - MD bus stop
500 NW 107th Avenue - MD bus stop
318 NW 107th Avenue - MD bus stop
200 NW 107th Avenue - MD bus stop
10701 NW W. Flagler - Mobil / Food Star
10910 W. Flagler - My Pueblo Restaurant
10983 SW 4th Street - MD bus stop
110th Avenue SW 5th St - MD bus stop
500 SW 109th Avenue - City of Sweetwater
City Hall, POLICE Department and MD Clerk of Courts
512 SW 109th Avenue - City of Sweetwater Passport Office
7th SW 110th Avenue - Stop sign
7th Tr SW 110th Avenue - Stop sign
7th Tr SW 113th and 114th Avenue
250 SW 114th Avenue Jorge Mas Canosa Youth Center / Ronselli Park
11495 W. Flagler - Social Security / Robles / Villa Hermosa
11699 W. Flagler - Salon Del Reino De Los Testigos De Jehova
117th Avenue SW 1st St - Corner
11590 SW 2nd St - MD bus stop
11490 SW 2nd St - MD bus stop
455 NW 114th Avenue - (New Building)
4th Tr NW 110th Avenue
6th St NW 114th Avenue
7th NW 113th Avenue
7th NW 112th Avenue
606 NW 112th Avenue - MD bus Stop
11235 NW 5th St - Vann Academy / MD bus stop
112th Avenue NW 2nd Tr - MD bus stop
112th Avenue NW 1st St - MD bus stop
11200 W. Flagler - Tower Plaza / MD bus stop
11200 SW 2nd St - MD bus stop
7th Tr SW 113th and 114th Avenue
550 SW 115th Avenue - Sweetwater Creek
115th SW 2nd Street - Stop sign
11400 SW W. Flagler - Flagler Shopping Center / MD bus stop
11388 W. Flagler - MD bus stop
113th Avenue W. Flagler - MD bus stop
11180 W. Flagler - MD bus stop
10900 W. Flagler - Finish Line Gas Station
10780 SW Flagler Madrono Restaurant
10720 W. Flagler - Sedanos
50 SW 108th Avenue - MD bus stop
10690 W. Flagler - Chase Bank

10500 SW W. Flagler - MacDonald
103ct SW W. Flagler - MD bus stop
10198 W. Flagler - Sunoco Gas Station / MD Bus stop
10044 W. Flagler - Navarro
99ct W. Flagler - MD bus stop
9695 W. Flagler - Winn Dixie
9825 W. Flagler - Ruben Dario Park
99ct W. Flagler - MD bus stop
102nd Avenue SW 1st St.
102nd Avenue SW 4th St. - Stop sign
10600 SW 4th St - Mildred & Claude Pepper Senior Center
300 SW 107th Ave - Continental National Bank of Miami
10750 SW 4th St - Sweetwater Towers
10899 SW 4th St - MD bus stop
740 SW 107th Avenue
1200 SW 108th Avenue - FIU
1525 SW 107th Avenue - Publix Supermarket / MD bus stop
1225 SW 107th Avenue - Palmer House / MD bus stop
595 SW 107th Avenue - MD bus stop
10555 W. Flagler (West Side) - FIU Engineering Center
561 NW 107th Ave -West Lake Village / MD bus stop
690 NW 107th Ave - Tropical Super Market
1455 NW 107 Ave- Macys & Old Navy - INTERNATIONAL MALL
10750 NW 14th Street - MD bus stop

© 2013 City of Sweetwater -

500 S.W. 109 Ave. Sweetwater, FL 33174

City Hall: (305) 221-0411

Appendix B

Travel Time Runs

Route 1

From	To	AM		MIDDAY		PM		Notes
		Time	Travel Time	Time	Travel Time	Time	Travel Time	
Nw 107 Avenue / NW 66 Street	NW 102 Avenue / NW 66 Street	01:47	01:47	01:29	01:29	01:32	01:32	
NW 102 Avenue / NW 66 Street	NW 102 Avenue / NW 58 Street	05:27	03:40	02:54	01:25	03:04	01:32	Segment is closed. Uses travel time from Route 1 - NW 107 Ave/NW 66 St to NW 107 Ave/NW 58 St
NW 102 Avenue / NW 58 Street	NW 107 Avenue / NW 58 Street	07:27	02:00	04:45	01:51	05:37	02:33	Segment is closed. Uses travel time from Route 1- NW 102 Ave/NW 66 St to NW 107 Ave/NW 66 St
NW 107 Avenue / NW 58 Street	NW 107 Avenue / NW 41 Street	12:15	04:48	08:26	03:41	11:27	05:50	Travel Time is Average of two travel runs
NW 107 Avenue / NW 41 Street	NW 107 Avenue / NW 33 Street	13:09	00:54	09:22	00:57	12:59	01:32	
NW 107 Avenue / NW 33 Street	NW 107 Avenue / NW 25 Street	15:19	02:10	12:18	02:57	16:18	03:19	
NW 107 Avenue / NW 25 Street	NW 107 Avenue / NW 12 Street	17:31	02:12	15:20	03:02	25:03	08:45	
NW 107 Avenue / NW 12 Street	NW 107 Avenue / NW 7 Street	20:56	03:25	17:27	02:07	26:46	01:42	
NW 107 Avenue / NW 7 Street	SW 107 Avenue / Flagler Street	22:22	01:26	19:22	01:55	29:44	02:59	
SW 107 Avenue / Flagler Street	SW 109 Avenue / Flagler Street	23:47	01:25	20:38	01:17	31:06	01:22	
SW 109 Avenue / Flagler Street	SW 109 Avenue / NW 4 Street	24:31	00:44	21:25	00:47	31:54	00:47	
SW 109 Avenue / SW 4 Street	SW 109 Avenue / SW 8 Street	26:58	02:28	23:27	02:02	35:26	03:32	
SW 109 Avenue / SW 8 Street	SW 109 Avenue / University Circle	28:38	01:40	25:23	01:57	36:50	01:24	
SW 109 Avenue / University Circle	SW 109 Avenue / University Circle	31:58	03:20	29:52	04:29	41:55	05:05	
SW 109 Avenue / University Circle	SW 109 Avenue / SW 8 Street	33:29	01:31	31:18	01:26	43:34	01:39	
SW 109 Avenue / SW 8 Street	SW 109 Avenue / SW 4 Street	34:29	01:00	32:18	01:00	44:25	00:51	
SW 109 Avenue / SW 4 Street	SW 109 Avenue / Flagler Street	35:57	01:28	34:51	02:33	46:04	01:39	
SW 109 Avenue / Flagler Street	SW 107 Avenue / Flagler Street	39:51	03:54	37:30	02:38	48:33	02:29	
SW 107 Avenue / Flagler Street	NW 107 Avenue / NW 7 Street	41:40	01:49	39:08	01:38	52:44	04:11	
NW 107 Avenue / NW 7 Street	NW 107 Avenue / NW 12 Street	43:47	02:07	41:16	02:08	55:23	02:39	
NW 107 Avenue / NW 12 Street	NW 107 Avenue / NW 25 Street	47:44	03:58	45:24	04:09	59:13	03:50	
NW 107 Avenue / NW 25 Street	NW 107 Avenue / NW 33 Street	49:10	01:26	46:31	01:07	1:00:40	01:27	
NW 107 Avenue / NW 33 Street	NW 107 Avenue / NW 41 Street	53:56	04:46	49:07	02:36	1:06:21	05:41	
NW 107 Avenue / NW 41 Street	NW 107 Avenue / NW 58 Street	57:33	03:37	52:46	03:39	1:11:32	05:11	
NW 107 Avenue / NW 58 Street	Nw 107 Avenue / NW 66 Street	59:19	01:46	54:00	01:14	1:12:44	01:12	
		59:19		54:00		1:12:44		

Route 2								
From	To	AM		MIDDAY		PM		Notes
		Time	Travel Time	Time	Travel Time	Time	Travel Time	
NW 109 Avenue / NW 82 Street	NW 109 Avenue / NW 90 Street	01:02	01:02	01:50	01:50	01:35	01:35	
NW 109 Avenue / NW 90 Street	NW 107 Avenue / NW 90 Street	01:58	00:56	02:49	00:59	02:28	00:53	
NW 107 Avenue / NW 90 Street	NW 107 Avenue / NW 82 Street	04:18	02:20	04:15	01:26	03:51	01:23	
NW 107 Avenue / NW 82 Street	NW 107 Avenue / NW 74 Street	07:26	03:08	06:32	02:17	08:55	05:04	
NW 107 Avenue / NW 74 Street	NW 107 Avenue / NW 66 Street	08:42	01:16	07:30	00:58	10:01	01:06	
NW 107 Avenue / NW 66 Street	NW 107 Avenue / NW 58 Street	10:55	02:13	08:27	00:57	12:51	02:50	
NW 107 Avenue / NW 58 Street	NW 107 Avenue / NW 41 Street	15:43	04:48	12:07	03:41	18:41	05:50	Travel Time is Average of two travel runs
NW 107 Avenue / NW 41 Street	NW 107 Avenue / NW 33 Street	16:37	00:54	13:04	00:57	20:13	01:32	
NW 107 Avenue / NW 33 Street	NW 107 Avenue / NW 25 Street	18:47	02:10	16:00	02:57	23:32	03:19	
NW 107 Avenue / NW 25 Street	NW 107 Avenue / NW 12 Street	20:59	02:12	19:02	03:02	32:17	08:45	
NW 107 Avenue / NW 12 Street	NW 107 Avenue / NW 7 Street	24:24	03:25	21:09	02:07	34:00	01:42	
NW 107 Avenue / NW 7 Street	SW 107 Avenue / Flagler Street	25:50	01:26	23:03	01:55	36:58	02:59	
SW 107 Avenue / Flagler Street	SW 109 Avenue / Flagler Street	27:15	01:25	24:20	01:17	38:20	01:22	
SW 109 Avenue / Flagler Street	SW 109 Avenue / NW 4 Street	27:59	00:44	25:06	00:47	39:07	00:47	
SW 109 Avenue / SW 4 Street	SW 109 Avenue / SW 8 Street	30:26	02:28	27:09	02:02	42:39	03:32	
SW 109 Avenue / SW 8 Street	SW 109 Avenue / University Circle	32:06	01:40	29:05	01:57	44:03	01:24	
SW 109 Avenue / University Circle	SW 109 Avenue / University Circle	35:26	03:20	33:34	04:29	49:09	05:05	
SW 109 Avenue / University Circle	SW 109 Avenue / SW 8 Street	36:57	01:31	35:00	01:26	50:48	01:39	
SW 109 Avenue / SW 8 Street	SW 109 Avenue / SW 4 Street	37:57	01:00	36:00	01:00	51:39	00:51	
SW 109 Avenue / SW 4 Street	SW 109 Avenue / Flagler Street	39:25	01:28	38:33	02:33	53:17	01:39	
SW 109 Avenue / Flagler Street	SW 107 Avenue / Flagler Street	43:19	03:54	41:11	02:38	55:47	02:29	
SW 107 Avenue / Flagler Street	NW 107 Avenue / NW 7 Street	45:08	01:49	42:50	01:38	59:58	04:11	
NW 107 Avenue / NW 7 Street	NW 107 Avenue / NW 12 Street	47:15	02:07	44:58	02:08	1:02:37	02:39	
NW 107 Avenue / NW 12 Street	NW 107 Avenue / NW 25 Street	51:12	03:58	49:07	04:09	1:06:27	03:50	
NW 107 Avenue / NW 25 Street	NW 107 Avenue / NW 33 Street	52:38	01:26	50:13	01:07	1:07:53	01:27	
NW 107 Avenue / NW 33 Street	NW 107 Avenue / NW 41 Street	57:24	04:46	52:49	02:36	1:13:34	05:41	
NW 107 Avenue / NW 41 Street	NW 107 Avenue / NW 58 Street	1:01:01	03:37	56:28	03:39	1:18:46	05:11	
NW 107 Avenue / NW 58 Street	Nw 107 Avenue / NW 66 Street	1:02:25	01:24	57:30	01:02	1:20:18	01:32	
Nw 107 Avenue / NW 66 Street	Nw 107 Avenue / NW 74 Street	1:03:31	01:06	59:59	02:29	1:21:34	01:16	
Nw 107 Avenue / NW 74 Street	Nw 107 Avenue / NW 82 Street	1:05:32	02:01	1:01:15	01:16	1:25:23	03:49	
Nw 107 Avenue / NW 82 Street	Nw 109 Avenue / NW 82 Street	1:06:31	00:59	1:02:05	00:50	1:26:03	00:40	
		1:06:31		1:02:05		1:26:03		

Route 3								
From	To	AM		MIDDAY		PM		Notes
		Time	Travel Time	Time	Travel Time	Time	Travel Time	
NW 107 Avenue / NW 90 Street	NW 102 Avenue / NW 90 Street	01:28	01:28	01:18	01:18	01:56	01:56	
NW 102 Avenue / NW 90 Street	NW 102 Avenue / NW 74 Street	04:00	02:32	03:09	01:51	03:57	02:01	
NW 102 Avenue / NW 74 Street	NW 102 Avenue / NW 66 Street	05:16	01:16	04:07	00:58	05:03	01:06	Segment is closed. Uses travel time from Route 2 - NW 107 Ave/NW 74 St to NW 107 Ave/NW 66 St
NW 102 Avenue / NW 66 Street	NW 102 Avenue / NW 58 Street	07:29	02:13	05:04	00:57	07:53	02:50	Segment is closed. Uses travel time from Route 2 - NW 107 Ave/NW 66 St to NW 107 Ave/NW 58 St
NW 102 Avenue / NW 58 Street	NW 107 Avenue / NW 58 Street	09:29	02:00	06:55	01:51	10:26	02:33	Uses travel time from Route 1 - NW 102 Ave/NW 66 St to NW 107 Ave/NW 66 St
NW 107 Avenue / NW 58 Street	NW 107 Avenue / NW 41 Street	14:17	04:48	10:35	03:41	16:16	05:50	Travel Time is Average of two travel runs
NW 107 Avenue / NW 41 Street	NW 107 Avenue / NW 33 Street	15:11	00:54	11:32	00:57	17:48	01:32	
NW 107 Avenue / NW 33 Street	NW 107 Avenue / NW 25 Street	17:21	02:10	14:28	02:57	21:07	03:19	
NW 107 Avenue / NW 25 Street	NW 107 Avenue / NW 12 Street	19:33	02:12	17:30	03:02	29:52	08:45	
NW 107 Avenue / NW 12 Street	NW 107 Avenue / NW 7 Street	22:58	03:25	19:37	02:07	31:35	01:42	
NW 107 Avenue / NW 7 Street	SW 107 Avenue / Flagler Street	24:24	01:26	21:31	01:55	34:33	02:59	
SW 107 Avenue / Flagler Street	SW 109 Avenue / Flagler Street	25:49	01:25	22:48	01:17	35:55	01:22	
SW 109 Avenue / Flagler Street	SW 109 Avenue / NW 4 Street	26:33	00:44	23:34	00:47	36:43	00:47	
SW 109 Avenue / SW 4 Street	SW 109 Avenue / SW 8 Street	29:00	02:28	25:37	02:02	40:15	03:32	
SW 109 Avenue / SW 8 Street	SW 109 Avenue / University Circle	30:40	01:40	27:33	01:57	41:39	01:24	
SW 109 Avenue / University Circle	SW 109 Avenue / University Circle	34:00	03:20	32:02	04:29	46:44	05:05	
SW 109 Avenue / University Circle	SW 109 Avenue / SW 8 Street	35:31	01:31	33:29	01:26	48:23	01:39	
SW 109 Avenue / SW 8 Street	SW 109 Avenue / SW 4 Street	36:31	01:00	34:28	01:00	49:14	00:51	
SW 109 Avenue / SW 4 Street	SW 109 Avenue / Flagler Street	37:59	01:28	37:01	02:33	50:53	01:39	
SW 109 Avenue / Flagler Street	SW 107 Avenue / Flagler Street	41:53	03:54	39:39	02:38	53:22	02:29	
SW 107 Avenue / Flagler Street	NW 107 Avenue / NW 7 Street	43:42	01:49	41:18	01:38	57:33	04:11	
NW 107 Avenue / NW 7 Street	NW 107 Avenue / NW 12 Street	45:49	02:07	43:26	02:08	1:00:12	02:39	
NW 107 Avenue / NW 12 Street	NW 107 Avenue / NW 25 Street	49:46	03:58	47:34	04:09	1:04:02	03:50	
NW 107 Avenue / NW 25 Street	NW 107 Avenue / NW 33 Street	51:12	01:26	48:41	01:07	1:05:29	01:27	
NW 107 Avenue / NW 33 Street	NW 107 Avenue / NW 41 Street	55:58	04:46	51:17	02:36	1:11:10	05:41	
NW 107 Avenue / NW 41 Street	NW 107 Avenue / NW 58 Street	59:35	03:37	54:56	03:39	1:16:21	05:11	
NW 107 Avenue / NW 58 Street	NW 107 Avenue / NW 66 Street	1:01:21	01:46	56:10	01:14	1:17:33	01:12	Uses travel time from Route 1 - NW 107 Ave/NW 58 St to NW 107 Ave/NW 66 St
Nw 107 Avenue / NW 66 Street	Nw 107 Avenue / NW 74 Street	1:04:32	03:11	57:48	01:38	1:18:50	01:17	
Nw 107 Avenue / NW 74 Street	Nw 107 Avenue / NW 82 Street	1:06:37	02:05	59:09	01:21	1:21:18	02:28	
Nw 107 Avenue / NW 82 Street	Nw 107 Avenue / NW 90 Street	1:08:06	01:29	1:00:56	01:47	1:22:52	01:34	
		1:08:06		1:00:56		1:22:52		

Route 1

From	To	Trial 1 - Start Time		Trial 2 - Start Time		Trial 3 - Start Time	
		6:59 AM		11:30 AM		4:02 PM	
		Time	Travel Time	Time	Travel Time	Time	Travel Time
Nw 107 Avenue / NW 66 Street	NW 102 Avenue / NW 66 Street	01:47	01:47	01:29	01:29	01:32	01:32
NW 102 Avenue / NW 66 Street	Nw 107 Avenue / NW 66 Street	03:47	02:00	03:20	01:51	04:05	02:33
Nw 107 Avenue / NW 66 Street	NW 107 Avenue / NW 58 Street	07:27	03:40	04:45	01:25	05:37	01:32
NW 107 Avenue / NW 58 Street	NW 107 Avenue / NW 41 Street	12:18	04:51	08:10	03:25	11:19	05:42
NW 107 Avenue / NW 41 Street	NW 107 Avenue / NW 33 Street	13:27	01:09	09:02	00:52	13:16	01:57
NW 107 Avenue / NW 33 Street	NW 107 Avenue / NW 25 Street	15:55	02:28	11:45	02:43	15:28	02:12
NW 107 Avenue / NW 25 Street	NW 107 Avenue / NW 12 Street	17:35	01:40	14:37	02:52	21:27	05:59
NW 107 Avenue / NW 12 Street	NW 107 Avenue / NW 7 Street	21:30	03:55	16:57	02:20	23:00	01:33
NW 107 Avenue / NW 7 Street	SW 107 Avenue / Flagler Street	22:43	01:13	18:50	01:53	25:32	02:32
SW 107 Avenue / Flagler Street	SW 109 Avenue / Flagler Street	24:15	01:32	20:09	01:19	27:11	01:39
SW 109 Avenue / Flagler Street	SW 109 Avenue / NW 4 Street	25:00	00:45	20:51	00:42	27:59	00:48
SW 109 Avenue / SW 4 Street	SW 109 Avenue / SW 8 Street	27:10	02:10	23:26	02:35	33:55	05:56
SW 109 Avenue / SW 8 Street	SW 109 Avenue / University Circle	29:14	02:04	26:14	02:48	34:20	00:25
SW 109 Avenue / University Circle	SW 109 Avenue / University Circle	32:15	03:01	30:22	04:08	38:55	04:35
SW 109 Avenue / University Circle	SW 109 Avenue / SW 8 Street	33:56	01:41	31:27	01:05	40:54	01:59
SW 109 Avenue / SW 8 Street	SW 109 Avenue / SW 4 Street	34:50	00:54	32:27	01:00	41:45	00:51
SW 109 Avenue / SW 4 Street	SW 109 Avenue / Flagler Street	36:35	01:45	34:24	01:57	42:30	00:45
SW 109 Avenue / Flagler Street	SW 107 Avenue / Flagler Street	41:50	05:15	37:00	02:36	46:29	03:59
SW 107 Avenue / Flagler Street	NW 107 Avenue / NW 7 Street	43:58	02:08	38:25	01:25	50:50	04:21
NW 107 Avenue / NW 7 Street	NW 107 Avenue / NW 12 Street	46:23	02:25	40:36	02:11	53:10	02:20
NW 107 Avenue / NW 12 Street	NW 107 Avenue / NW 25 Street	50:27	04:04	44:51	04:15	56:55	03:45
NW 107 Avenue / NW 25 Street	NW 107 Avenue / NW 33 Street	51:40	01:13	45:58	01:07	58:30	01:35
NW 107 Avenue / NW 33 Street	NW 107 Avenue / NW 41 Street	57:59	06:19	48:50	02:52	1:03:25	04:55
NW 107 Avenue / NW 41 Street	NW 107 Avenue / NW 58 Street	1:02:04	04:05	52:36	03:46	1:11:15	07:50
NW 107 Avenue / NW 58 Street	Nw 107 Avenue / NW 66 Street	1:03:50	01:46	53:50	01:14	1:12:27	01:12

Route 2

From	To	Trial 1 - Start Time		Trial 2 - Start Time		Trial 3 - Start Time	
		8:13 AM		12:32 AM		5:18 PM	
		Time	Travel Time	Time	Travel Time	Time	Travel Time
NW 109 Avenue / NW 82 Street	NW 109 Avenue / NW 90 Street	01:02	01:02	01:50	01:50	01:35	01:35
NW 109 Avenue / NW 90 Street	NW 107 Avenue / NW 90 Street	01:58	00:56	02:49	00:59	02:28	00:53
NW 107 Avenue / NW 90 Street	NW 107 Avenue / NW 82 Street	04:18	02:20	04:15	01:26	03:51	01:23
NW 107 Avenue / NW 82 Street	NW 107 Avenue / NW 74 Street	07:26	03:08	06:32	02:17	08:55	05:04
NW 107 Avenue / NW 74 Street	NW 107 Avenue / NW 66 Street	08:42	01:16	07:30	00:58	10:01	01:06
NW 107 Avenue / NW 66 Street	NW 107 Avenue / NW 58 Street	10:55	02:13	08:27	00:57	12:51	02:50
NW 107 Avenue / NW 58 Street	NW 107 Avenue / NW 41 Street	15:40	04:45	12:23	03:56	18:49	05:58
NW 107 Avenue / NW 41 Street	NW 107 Avenue / NW 33 Street	16:20	00:40	13:24	01:01	19:56	01:07
NW 107 Avenue / NW 33 Street	NW 107 Avenue / NW 25 Street	18:11	01:51	16:34	03:10	24:22	04:26
NW 107 Avenue / NW 25 Street	NW 107 Avenue / NW 12 Street	20:55	02:44	19:45	03:11	35:54	11:32
NW 107 Avenue / NW 12 Street	NW 107 Avenue / NW 7 Street	23:50	02:55	21:39	01:54	37:45	01:51
NW 107 Avenue / NW 7 Street	SW 107 Avenue / Flagler Street	25:29	01:39	23:35	01:56	41:10	03:25
SW 107 Avenue / Flagler Street	SW 109 Avenue / Flagler Street	26:47	01:18	24:49	01:14	42:15	01:05
SW 109 Avenue / Flagler Street	SW 109 Avenue / NW 4 Street	27:30	00:43	25:40	00:51	43:02	00:47
SW 109 Avenue / NW 4 Street	SW 109 Avenue / SW 8 Street	30:15	02:45	27:10	01:30	44:10	01:08
SW 109 Avenue / SW 8 Street	SW 109 Avenue / University Circle	31:31	01:16	28:15	01:05	46:33	02:23
SW 109 Avenue / University Circle	SW 109 Avenue / University Circle	35:10	03:39	33:04	04:49	52:09	05:36
SW 109 Avenue / University Circle	SW 109 Avenue / SW 8 Street	36:31	01:21	34:52	01:48	53:28	01:19
SW 109 Avenue / SW 8 Street	SW 109 Avenue / SW 4 Street	37:36	01:05	35:51	00:59	54:19	00:51
SW 109 Avenue / SW 4 Street	SW 109 Avenue / Flagler Street	38:48	01:12	39:01	03:10	56:51	02:32
SW 109 Avenue / Flagler Street	SW 107 Avenue / Flagler Street	41:20	02:32	41:41	02:40	57:51	01:00
SW 107 Avenue / Flagler Street	NW 107 Avenue / NW 7 Street	42:50	01:30	43:33	01:52	01:52	04:01
NW 107 Avenue / NW 7 Street	NW 107 Avenue / NW 12 Street	44:39	01:49	45:38	02:05	04:50	02:58
NW 107 Avenue / NW 12 Street	NW 107 Avenue / NW 25 Street	48:30	03:51	49:40	04:02	08:45	03:55
NW 107 Avenue / NW 25 Street	NW 107 Avenue / NW 33 Street	50:09	01:39	50:46	01:06	10:03	01:18
NW 107 Avenue / NW 33 Street	NW 107 Avenue / NW 41 Street	53:22	03:13	53:06	02:20	16:30	06:27
NW 107 Avenue / NW 41 Street	NW 107 Avenue / NW 58 Street	56:31	03:09	56:38	03:32	19:03	02:33
NW 107 Avenue / NW 58 Street	Nw 107 Avenue / NW 66 Street	57:55	01:24	57:40	01:02	20:35	01:32
Nw 107 Avenue / NW 66 Street	Nw 107 Avenue / NW 74 Street	59:01	01:06	00:09	02:29	21:51	01:16
Nw 107 Avenue / NW 74 Street	Nw 107 Avenue / NW 82 Street	01:02	02:01	01:25	01:16	25:40	03:49
Nw 107 Avenue / NW 82 Street	Nw 109 Avenue / NW 82 Street	02:01	00:59	02:15	00:50	26:20	00:40

Route 3

From	To	Trial 1 - Start Time		Trial 2 - Start Time		Trial 3 - Start Time	
		9:27 AM		1:37 AM		6:47 PM	
		Time	Travel Time	Time	Travel Time	Time	Travel Time
NW 107 Avenue / NW 90 Street	NW 102 Avenue / NW 90 Street	01:28	01:28	01:18	01:18	01:56	01:56
NW 102 Avenue / NW 90 Street	NW 102 Avenue / NW 74 Street	04:00	02:32	03:09	01:51	03:57	02:01
NW 102 Avenue / NW 74 Street	NW 107 Avenue / NW 74 Street	10:07	06:07	10:05	06:56	15:09	11:12
NW 107 Avenue / NW 74 Street	NW 107 Avenue / NW 66 Street	11:20	01:13	11:05	01:00	18:10	03:01
NW 107 Avenue / NW 66 Street	NW 107 Avenue / NW 58 Street						
NW 107 Avenue / NW 58 Street	NW 107 Avenue / NW 41 Street						
NW 107 Avenue / NW 41 Street	NW 107 Avenue / NW 33 Street						
NW 107 Avenue / NW 33 Street	NW 107 Avenue / NW 25 Street						
NW 107 Avenue / NW 25 Street	NW 107 Avenue / NW 12 Street						
NW 107 Avenue / NW 12 Street	NW 107 Avenue / NW 7 Street						
NW 107 Avenue / NW 7 Street	SW 107 Avenue / Flagler Street						
SW 107 Avenue / Flagler Street	SW 109 Avenue / Flagler Street						
SW 109 Avenue / Flagler Street	SW 109 Avenue / NW 4 Street						
SW 109 Avenue / SW 4 Street	SW 109 Avenue / SW 8 Street						
SW 109 Avenue / SW 8 Street	SW 109 Avenue / University Circle						
SW 109 Avenue / University Circle	SW 109 Avenue / University Circle						
SW 109 Avenue / University Circle	SW 109 Avenue / SW 8 Street						
SW 109 Avenue / SW 8 Street	SW 109 Avenue / SW 4 Street						
SW 109 Avenue / SW 4 Street	SW 109 Avenue / Flagler Street						
SW 109 Avenue / Flagler Street	SW 107 Avenue / Flagler Street						
SW 107 Avenue / Flagler Street	NW 107 Avenue / NW 7 Street						
NW 107 Avenue / NW 7 Street	NW 107 Avenue / NW 12 Street						
NW 107 Avenue / NW 12 Street	NW 107 Avenue / NW 25 Street						
NW 107 Avenue / NW 25 Street	NW 107 Avenue / NW 33 Street						
NW 107 Avenue / NW 33 Street	NW 107 Avenue / NW 41 Street						
NW 107 Avenue / NW 41 Street	NW 107 Avenue / NW 58 Street						
NW 107 Avenue / NW 58 Street	Nw 107 Avenue / NW 66 Street	14:50	14:50	15:02	15:02	21:35	21:35
Nw 107 Avenue / NW 66 Street	Nw 107 Avenue / NW 74 Street	18:01	03:11	16:40	01:38	22:52	01:17
Nw 107 Avenue / NW 74 Street	Nw 107 Avenue / NW 82 Street	20:06	02:05	18:01	01:21	25:20	02:28
Nw 107 Avenue / NW 82 Street	Nw 107 Avenue / NW 90 Street	21:35	01:29	19:48	01:47	26:54	01:34

AVERAGES

From	To	AM		MIDDAY		PM	
		Time	Travel Time	Time	Travel Time	Time	Travel Time
Nw 107 Avenue / NW 66 Street	NW 102 Avenue / NW 66 Street		00:00		00:00		00:00
NW 102 Avenue / NW 66 Street	Nw 107 Avenue / NW 66 Street		00:00		00:00		00:00
Nw 107 Avenue / NW 66 Street	NW 107 Avenue / NW 58 Street		00:00		00:00		00:00
NW 107 Avenue / NW 58 Street	NW 107 Avenue / NW 41 Street		04:48		03:41		05:50
NW 107 Avenue / NW 41 Street	NW 107 Avenue / NW 33 Street		00:54		00:57		01:32
NW 107 Avenue / NW 33 Street	NW 107 Avenue / NW 25 Street		02:10		02:57		03:19
NW 107 Avenue / NW 25 Street	NW 107 Avenue / NW 12 Street		02:12		03:02		08:45
NW 107 Avenue / NW 12 Street	NW 107 Avenue / NW 7 Street		03:25		02:07		01:42
NW 107 Avenue / NW 7 Street	SW 107 Avenue / Flagler Street		01:26		01:55		02:59
SW 107 Avenue / Flagler Street	SW 109 Avenue / Flagler Street		01:25		01:17		01:22
SW 109 Avenue / Flagler Street	SW 109 Avenue / NW 4 Street		00:44		00:47		00:47
SW 109 Avenue / SW 4 Street	SW 109 Avenue / SW 8 Street		02:28		02:02		03:32
SW 109 Avenue / SW 8 Street	SW 109 Avenue / University Circle		01:40		01:57		01:24
SW 109 Avenue / University Circle	SW 109 Avenue / University Circle		03:20		04:29		05:05
SW 109 Avenue / University Circle	SW 109 Avenue / SW 8 Street		01:31		01:26		01:39
SW 109 Avenue / SW 8 Street	SW 109 Avenue / SW 4 Street		01:00		01:00		00:51
SW 109 Avenue / SW 4 Street	SW 109 Avenue / Flagler Street		01:28		02:33		01:39
SW 109 Avenue / Flagler Street	SW 107 Avenue / Flagler Street		03:54		02:38		02:29
SW 107 Avenue / Flagler Street	NW 107 Avenue / NW 7 Street		01:49		01:38		04:11
NW 107 Avenue / NW 7 Street	NW 107 Avenue / NW 12 Street		02:07		02:08		02:39
NW 107 Avenue / NW 12 Street	NW 107 Avenue / NW 25 Street		03:58		04:09		03:50
NW 107 Avenue / NW 25 Street	NW 107 Avenue / NW 33 Street		01:26		01:07		01:27
NW 107 Avenue / NW 33 Street	NW 107 Avenue / NW 41 Street		04:46		02:36		05:41
NW 107 Avenue / NW 41 Street	NW 107 Avenue / NW 58 Street		03:37		03:39		05:11
NW 107 Avenue / NW 58 Street	Nw 107 Avenue / NW 66 Street		00:00		00:00		00:00

Appendix C

Preliminary Stop Locations

NORTHBOUND STOPS		Proposed Stops FIU Trolley Route 3	NOTES
1	FIU MAIDIQUE CAMPUS BUS TERM	FIU Route 3	Main Campus
FIU Route	SW 109 AV SW 7 ST	FIU Route 3	109 Tower*
12	NW 107 AV FLAGLER ST	FIU Route 3	College of Engineering
13	NW 107 AV NW 12 ST	FIU Route 3	
15	NW 107 AV NW 14 ST	FIU Route 3	
16	NW 107 AV NW 15 ST	FIU Route 3	
DLoop1	NW 107 AV NW 17 ST	FIU Route 3	
17	NW 107 AV NW 19 ST	FIU Route 3	
18	NW 107 AV NW 25 ST	FIU Route 3	
19	NW 107 AV & NW 25 ST	FIU Route 3	
20	NW 107 AV NW 27 ST	FIU Route 3	
21	NW 107 AV NW 31 TR	FIU Route 3	
FIU Route	NW 107 AV NW 33 ST	FIU Route 3	
FIU Route	NW 107 AV NW 37 ST	FIU Route 3	
FIU Route	NW 107 AV NW 41 ST	FIU Route 3	
FIU Route	NW 107 AV & NW 41 ST	FIU Route 3	
FIU Route	NW 107 AV NW 52 ST	FIU Route 3	
FIU Route	NW 107 AV NW 58 ST	FIU Route 3	
FIU Route	NW 107 AV NW 66 ST	FIU Route 3	
FIU Route	NW 107 AV NW 69 ST	FIU Route 3	
FIU Route	NW 107 AV NW 74 ST	FIU Route 3	
FIU Route	NW 107 AV & NW 74 ST	FIU Route 3	
FIU Route	NW 107 AV NW 77 ST	FIU Route 3	
FIU Route	NW 107 AV NW 82 ST	FIU Route 3	
FIU Route	NW 107 AV NW 88 ST	FIU Route 3	
FIU Route	NW 90 ST NW 103 PL	FIU Route 3	Eastbound on NW 90

SOUTHBOUND STOPS		Proposed FIU Trolley Route Stop	NOTES
FIU Route	NW 102 AV NW 88 ST	FIU Route 3	
FIU Route	NW 102 AV NW 82 ST	FIU Route 3	
FIU Route	NW 102 AV NW 77 ST	FIU Route 3	
FIU Route	NW 102 AV NW 75 ST	FIU Route 3	
FIU Route	NW 102 AV NW 74 ST	FIU Route 3	
FIU Route	NW 102 AV NW 69 ST	FIU Route 3	
FIU Route	NW 102 AV NW 66 ST	FIU Route 3	
FIU Route	NW 102 AV NW 58 ST	FIU Route 3	
FIU Route	NW 58 ST NW 104 AV	FIU Route 3	
FIU Route	NW 58 ST NW 105 CT	FIU Route 3	
DLoop1	NW 107 AV NW 58 ST	FIU Route 3	
DLoop1	NW 107 AV NW 51 ST	FIU Route 3	
FIU Route	NW 107 AV NW 48 LN	FIU Route 3	
FIU Route	NW 107 AV NW 43 LN	FIU Route 3	
FIU Route	NW 107 AV NW 41 ST	FIU Route 3	
2	NW 107 AV NW 31 TR	FIU Route 3	
3	NW 107 AV NW 27 ST	FIU Route 3	
4	NW 107 AV NW 24 ST	FIU Route 3	
5	NW 107 AV NW 19 ST	FIU Route 3	
6	NW 107 AV NW 15 ST	FIU Route 3	
8	NW 107 AV & NW 14 ST	FIU Route 3	
9	NW 107 AV NW 14 ST	FIU Route 3	
14	NW 107 AV # 230	FIU Route 3	College of Engineering
FIU Route	SW 109 AV SW 7 ST	FIU Route 3	109 Tower*
23	FIU MAIDIQUE CAMPUS BUS TERM	FIU Route 3	Main Campus

Appendix D

Potential Ridership

SERPM Data

TAZ Map

FIU Faculty /Staff/ Student 'Hot Spots' Map

Southeast Florida Regional Planning Model (SERPM)

NW 107th Avenue (1 mile on each side)

N/S Limits: from NW 74th Street to SW 32nd Street

E/W Limits: NW 97th Avenue to NW 117th Avenue

	TAZ	pop	emp_total
1	3584	1985	163
2	3585	1589	220
3	3590	193	287
4	3628	1614	58
5	3629	1182	33
6	3630	524	29
7	3631	1054	36
8	3632	1038	33
9	3633	1532	33
10	3634	826	30
11	3635	354	955
12	3636	673	19
13	3637	82	389
14	3638	27	1313
15	3639	2	735
16	3640	0	1802
17	3641	522	492
18	3642	0	1690
19	3724	661	10
20	3725	581	177
21	3726	256	160
22	3727	0	0
23	3728	0	1557
24	3729	0	1687
25	3730	0	644
26	3731	0	3399
27	3732	0	571
28	3733	370	79
29	3734	1892	319
30	3735	746	104
31	3736	128	13
32	3737	534	39
33	3881	300	16
34	3882	394	35
35	3883	265	88
36	3884	215	13
37	3892	109	151
38	3891	1146	30
39	3890	487	16
40	3893	554	111
41	3894	320	14
42	3895	757	155

Total	22912	17705
--------------	--------------	--------------

NW 107th Avenue (1 mile on each side)

N/S Limits: NW 66th Street to SW 16th Street

E/W Limits: NW 97th Avenue to NW 117th Avenue

	TAZ	pop	emp_total	Total
1	3584	992.5	81.5	1074
2	3585	794.5	110	904.5
3	3590	1787	191.5	1978.5
4	3628	1614	58	1672
5	3629	1182	33	1215
6	3630	524	29	553
7	3631	1054	36	1090
8	3632	1038	33	1071
9	3633	1532	33	1565
10	3634	826	30	856
11	3635	354	955	1309
12	3636	673	19	692
13	3637	82	389	471
14	3638	27	1313	1340
15	3639	2	735	737
16	3640	0	1802	1802
17	3641	522	492	1014
18	3642	0	1690	1690
19	3724	661	10	671
20	3725	581	177	758
21	3726	256	160	416
22	3727	0	0	0
23	3728	0	1557	1557
24	3729	0	1687	1687
25	3730	0	644	644
26	3731	0	3399	3399
27	3732	0	571	571
28	3733	370	79	449
29	3734	1892	319	2211
30	3735	746	104	850
31	3736	128	13	141
32	3737	534	39	573
40	3893	554	111	665
41	3894	320	14	334
42	3895	757	155	912

* TAZ 1 / half

* TAZ 2 / half

* TAZ 3 / half

Total	19,803	17,069	36,872
--------------	---------------	---------------	---------------

Doral Trolley
FIU Route 1 Ridership Estimate

Route	Potential Daily Riders [a]	Estimate Daily Riders [b] = [a]*0.01	Estimate Yearly Riders [c] = [b]*52*5
Proposed FIU Route 1	36,872	369	95,867

[a] = Based on SERMP total population + total employee

[b] = Calculated based on 1% of Potential Riders

[c] = Calculated based on weekday operations

Southeast Florida Regional Planning Model (SERPM)

NW 107th Avenue (1 mile on each side)

N/S Limits: from NW 74th Street to SW 32nd Street

E/W Limits: NW 97th Avenue to NW 117th Avenue

	TAZ	pop	emp_total
1	3584	1985	163
2	3585	1589	220
3	3590	193	287
4	3628	1614	58
5	3629	1182	33
6	3630	524	29
7	3631	1054	36
8	3632	1038	33
9	3633	1532	33
10	3634	826	30
11	3635	354	955
12	3636	673	19
13	3637	82	389
14	3638	27	1313
15	3639	2	735
16	3640	0	1802
17	3641	522	492
18	3642	0	1690
19	3724	661	10
20	3725	581	177
21	3726	256	160
22	3727	0	0
23	3728	0	1557
24	3729	0	1687
25	3730	0	644
26	3731	0	3399
27	3732	0	571
28	3733	370	79
29	3734	1892	319
30	3735	746	104
31	3736	128	13
32	3737	534	39
33	3881	300	16
34	3882	394	35
35	3883	265	88
36	3884	215	13
37	3892	109	151
38	3891	1146	30
39	3890	487	16
40	3893	554	111
41	3894	320	14
42	3895	757	155

Total	22912	17705
--------------	--------------	--------------

NW 107th Avenue (1 mile on each side)

N/S Limits: NW 90th Street to SW 16th Street

E/W Limits: NW 97th Avenue to NW 117th Avenue

	TAZ	pop	emp_total	Total
1	3584	1985	163	2148
2	3585	1589	220	1809
3	3590	3574	383	3957
4	3628	1614	58	1672
5	3629	1182	33	1215
6	3630	524	29	553
7	3631	1054	36	1090
8	3632	1038	33	1071
9	3633	1532	33	1565
10	3634	826	30	856
11	3635	354	955	1309
12	3636	673	19	692
13	3637	82	389	471
14	3638	27	1313	1340
15	3639	2	735	737
16	3640	0	1802	1802
17	3641	522	492	1014
18	3642	0	1690	1690
19	3724	661	10	671
20	3725	581	177	758
21	3726	256	160	416
22	3727	0	0	0
23	3728	0	1557	1557
24	3729	0	1687	1687
25	3730	0	644	644
26	3731	0	3399	3399
27	3732	0	571	571
28	3733	370	79	449
29	3734	1892	319	2211
30	3735	746	104	850
31	3736	128	13	141
32	3737	534	39	573
40	3893	554	111	665
41	3894	320	14	334
42	3895	757	155	912
43	2903	1985	163	2148
44	3586	1589	220	1809
45	3587	3574	383	3957

* TAZ 1 + 2

* TAZ 1

* TAZ 2

* TAZ 1 + 2

Total	30,525	18,218	48,743
--------------	---------------	---------------	---------------

Doral Trolley
FIU Route 2 Ridership Estimate

Route	Potential Daily Riders [a]	Estimate Daily Riders [b] = [a]*0.01	Estimate Yearly Riders [c] = [b]*52*5
Proposed FIU Route 2	48,743	487	126,732

[a] = Based on SERMP total population + total employee

[b] = Calculated based on 1% of Potential Riders

[c] = Calculated based on weekday operations

Southeast Florida Regional Planning Model (SERPM)

NW 107th Avenue (1 mile on each side)

N/S Limits: from NW 74th Street to SW 32nd Street

E/W Limits: NW 97th Avenue to NW 117th Avenue

	TAZ	pop	emp_total
1	3584	1985	163
2	3585	1589	220
3	3590	193	287
4	3628	1614	58
5	3629	1182	33
6	3630	524	29
7	3631	1054	36
8	3632	1038	33
9	3633	1532	33
10	3634	826	30
11	3635	354	955
12	3636	673	19
13	3637	82	389
14	3638	27	1313
15	3639	2	735
16	3640	0	1802
17	3641	522	492
18	3642	0	1690
19	3724	661	10
20	3725	581	177
21	3726	256	160
22	3727	0	0
23	3728	0	1557
24	3729	0	1687
25	3730	0	644
26	3731	0	3399
27	3732	0	571
28	3733	370	79
29	3734	1892	319
30	3735	746	104
31	3736	128	13
32	3737	534	39
33	3881	300	16
34	3882	394	35
35	3883	265	88
36	3884	215	13
37	3892	109	151
38	3891	1146	30
39	3890	487	16
40	3893	554	111
41	3894	320	14
42	3895	757	155

Total	22912	17705
--------------	--------------	--------------

NW 107th Avenue (1 mile on each side)

N/S Limits: NW 90th Street to SW 16th Street

E/W Limits: NW 97th Avenue to NW 117th Avenue

	TAZ	pop	emp_total	Total
1	3584	1985	163	2148
2	3585	1589	220	1809
3	3590	7148	766	7914
4	3628	1614	58	1672
5	3629	1182	33	1215
6	3630	524	29	553
7	3631	1054	36	1090
8	3632	1038	33	1071
9	3633	1532	33	1565
10	3634	826	30	856
11	3635	354	955	1309
12	3636	673	19	692
13	3637	82	389	471
14	3638	27	1313	1340
15	3639	2	735	737
16	3640	0	1802	1802
17	3641	522	492	1014
18	3642	0	1690	1690
19	3724	661	10	671
20	3725	581	177	758
21	3726	256	160	416
22	3727	0	0	0
23	3728	0	1557	1557
24	3729	0	1687	1687
25	3730	0	644	644
26	3731	0	3399	3399
27	3732	0	571	571
28	3733	370	79	449
29	3734	1892	319	2211
30	3735	746	104	850
31	3736	128	13	141
32	3737	534	39	573
40	3893	554	111	665
41	3894	320	14	334
42	3895	757	155	912
43	2903	1985	163	2148
44	3586	1589	220	1809
45	3587	3574	383	3957

* TAZ (1 + 2)x2

* TAZ 1

* TAZ 2

* TAZ 1 + 2

Total	34,099	18,601	52,700
--------------	---------------	---------------	---------------

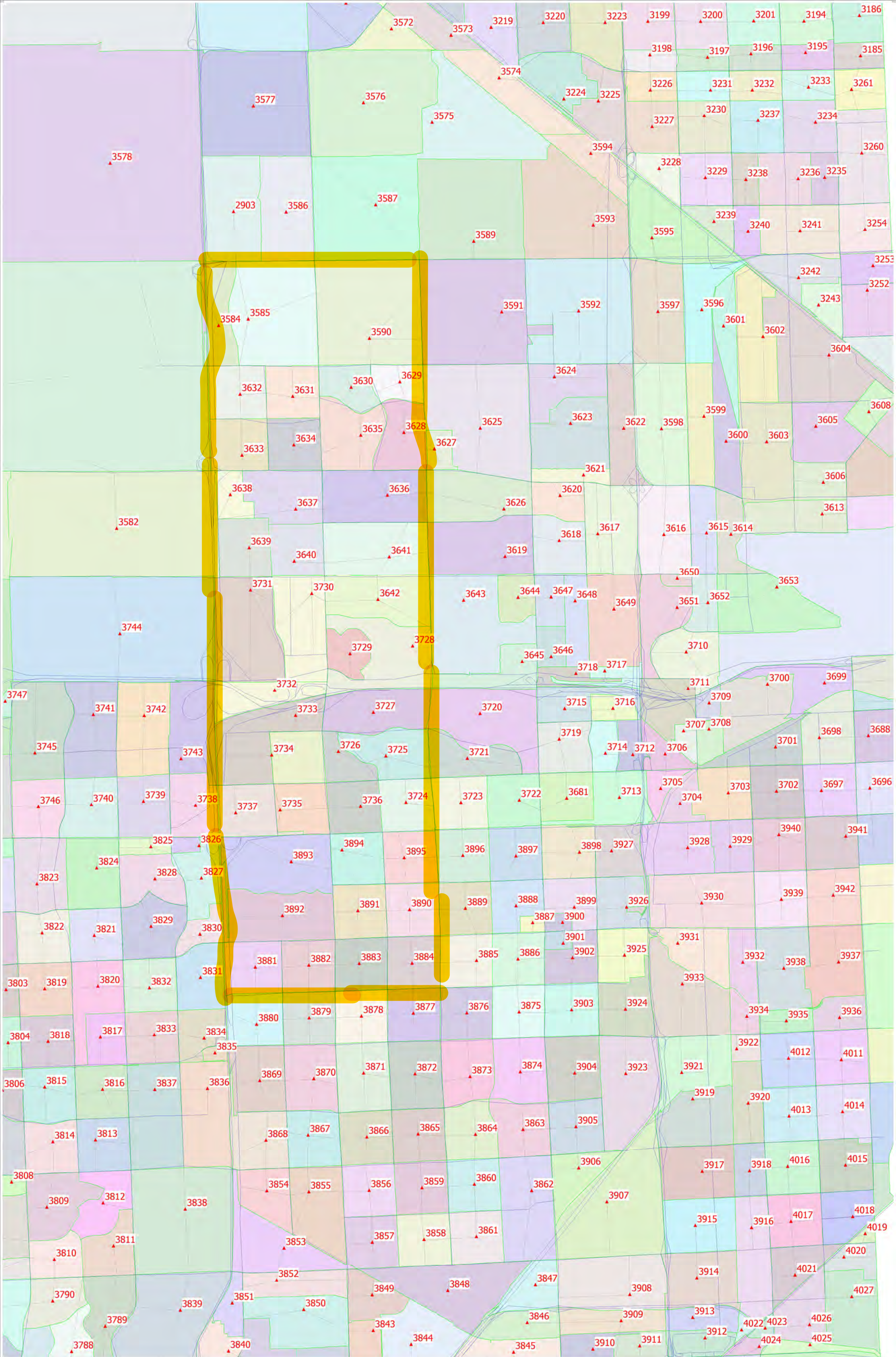
Doral Trolley
FIU Route 3 Ridership Estimate

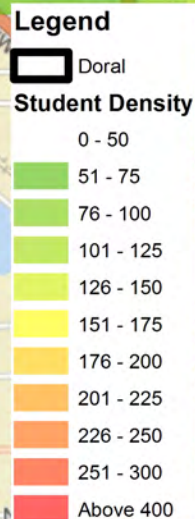
Route	Potential Daily Riders [a]	Estimate Daily Riders [b] = [a]*0.01	Estimate Yearly Riders [c] = [b]*52*5
Proposed FIU Route 3	52,700	527	137,020

[a] = Based on SERMP total population + total employee

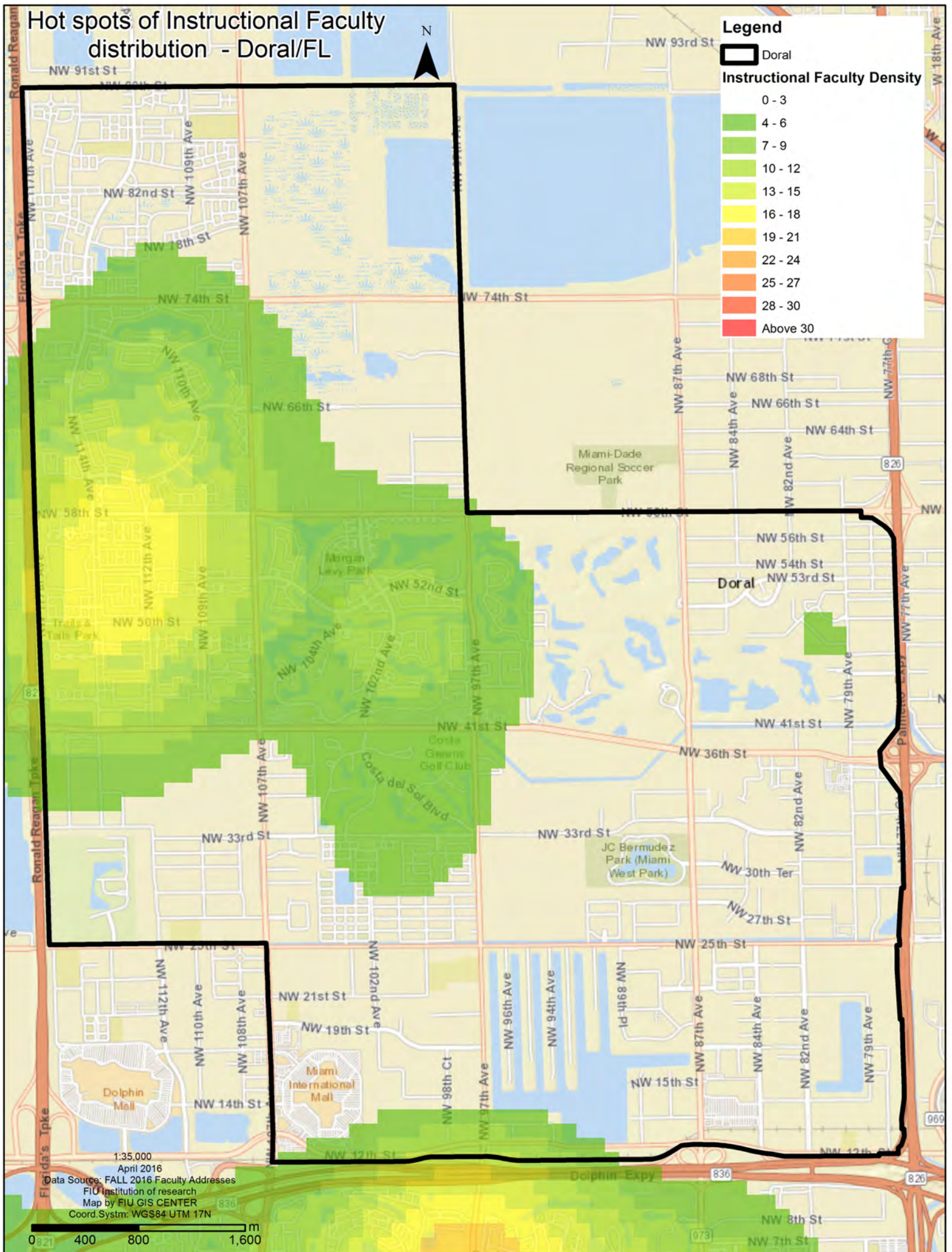
[b] = Calculated based on 1% of Potential Riders

[c] = Calculated based on weekday operations





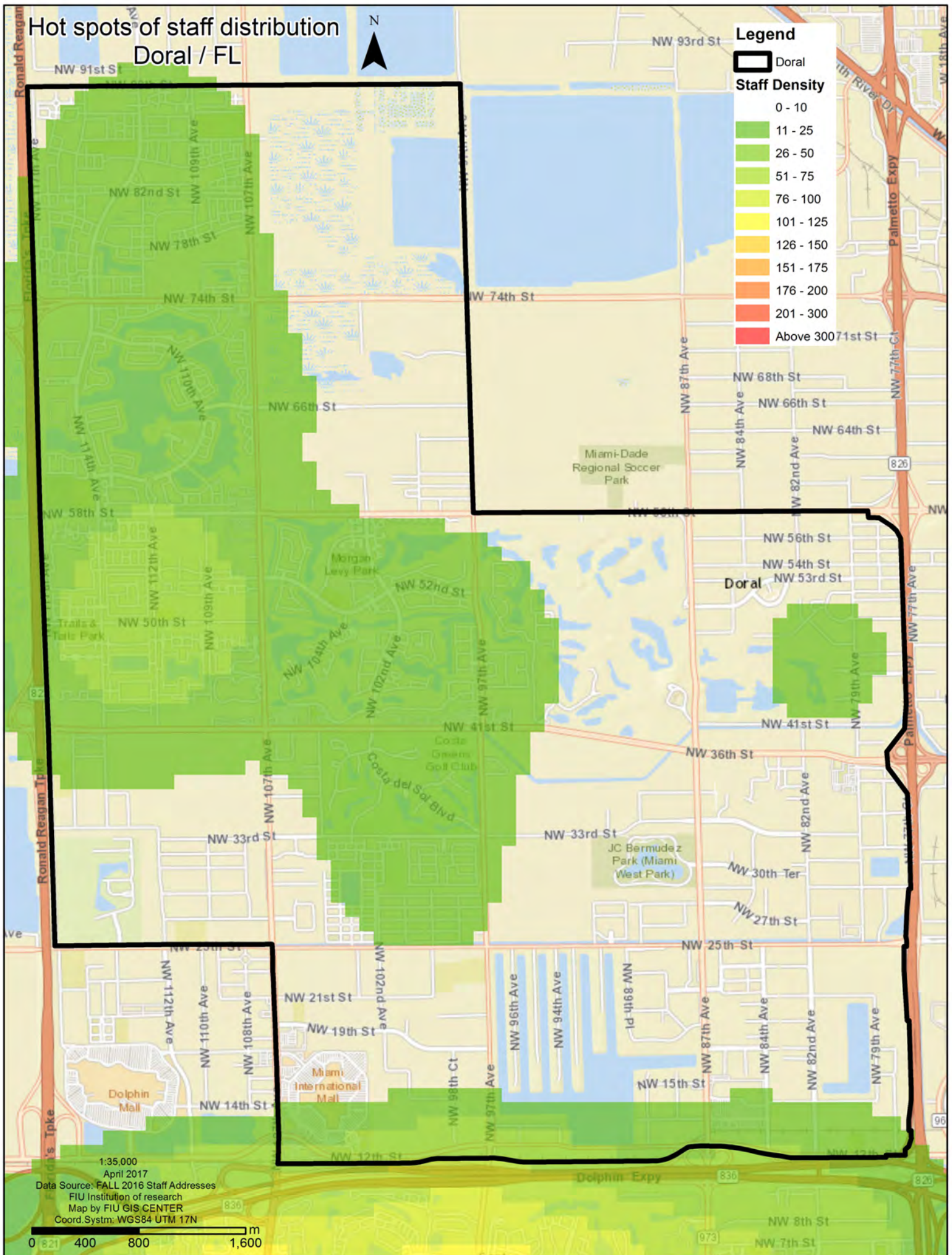
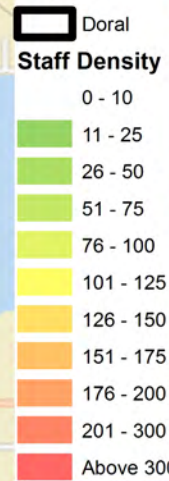
Hot spots of Instructional Faculty distribution - Doral/FL



Hot spots of staff distribution Doral / FL



Legend



1:35,000

April 2017

Data Source: FALL 2016 Staff Addresses

FIU Institution of research

Map by FIU GIS CENTER

Coord System: WGS84 UTM 17N

0 400 800 1,600 m

Appendix E

Public Involvement

**City of Doral Resolution No. 17-206
Meeting Sign-in Sheet Comment
Forms**

RESOLUTION No. 17-206

A RESOLUTION OF THE MAYOR AND THE CITY COUNCIL OF THE CITY OF DORAL, FLORIDA, APPROVING THE IMPLEMENTATION OF AN ALTERNATIVE ROUTE 3 OF THE FLORIDA INTERNATIONAL UNIVERSITY (FIU) DORAL TROLLEY ROUTE, AS PRESENTED IN THE DORAL TROLLEY EXPANSION STUDY, FOR AN APPROXIMATE INCREMENTAL OPERATION AND MAINTENANCE ANNUAL COST OF \$550,000.00; PROVIDING FOR IMPLEMENTATION; AND PROVIDING FOR AN EFFECTIVE DATE

WHEREAS, since its inception, the Doral Trolley System (“DTS”) has grown from one (1) trolley on one (1) route to eleven (11) trolleys on three (3) routes; and

WHEREAS, the City of Doral (the “City”) Public Works Department (PWD) continuously reviews the DTS to recommend improvements to keep up with passenger demands and better serve the community; and

WHEREAS, with the success of the Doral Trolley, the City Council wanted to explore the feasibility of providing a new trolley route that would provide service between the City and Florida International University (“FIU”) as way to potentially service the over 5,000 Florida International University (FIU) students, faculty, and staff that reside within the City; and

WHEREAS, the City was awarded a \$28,000 from the Transportation Planning Organization to complete a \$35,000 Doral Trolley Route Expansion Study; and

WHEREAS, three alternative FIU Trolley Routes were developed, analyzed, and presented to the Public; and

WHEREAS, the funding for the FIU Trolley Route service was budgeted in the FY 2017 – 2018 Transportation Fund under account 101.80005.500341 (\$990,000) and the PTP Fund under account 106.80005.500341 (\$1,635,000); and

WHEREAS, the City is projected to receive \$2,362,667 in Fiscal Year 2017 – 2018 from the People’s Transportation Plan that will help sustain the Doral Trolley service; and

WHEREAS, the City Council finds that the implementation of Alternative Route 3 for Monday through Friday service between 6:00 AM and 11:00 PM to be in the best interest of the City.

NOW, THEREFORE, BE IT RESOLVED BY THE MAYOR AND CITY COUNCIL OF THE CITY OF DORAL, FLORIDA, AS FOLLOWS:

Section 1. Recitals. The above recitals are confirmed, adopted, and incorporated herein and made part hereof by this reference.

Section 2. Approval. The City Council hereby approves Alternative Route 3 from the Florida International University Doral Trolley Route Expansion Study for an approximate incremental Operations and Maintenance cost of \$550,000.

Section 3. Authorization. The City Manager is authorized to implement Alternative Route 3 from the Florida International University Doral Trolley Route Expansion Study and expend budgeted funds on behalf of the City.

Section 4. Implementation. The City Manager and City Attorney are hereby authorized to take such action as may be necessary to implement the purpose and the provisions of this resolution.

Section 5. Effective Date. This Resolution shall take effect immediately upon adoption.

The foregoing Resolution was offered by Councilmember Cabrera who moved its adoption. The motion was seconded by Vice Mayor Rodriguez and upon being put to a vote, the vote was as follows:

Mayor Juan Carlos Bermudez	Yes
Vice Mayor Ana Maria Rodriguez	Yes
Councilman Pete Cabrera	Yes
Councilwoman Christi Fraga	Yes
Councilwoman Claudia Mariaca	Yes

PASSED AND ADOPTED this 8 day of November, 2017.



JUAN CARLOS BERMUDEZ, MAYOR

ATTEST:



CONNIE DIAZ, CMC
CITY CLERK

APPROVED AS TO FORM AND LEGAL SUFFICIENCY
FOR THE USE AND RELIANCE OF THE CITY OF DORAL ONLY:



WEISS, SEROTA, HELFMAN, COLE & BIERMAN, P.L.
CITY ATTORNEY



+



We want to hear from you!

WEDNESDAY, JUNE 28

1:00 PM

**FIU - CAMPUS
MODESTO A. MAIDIQUE
GRAHAM CENTER 140**

*FREE refreshments and giveaways will be provided!
Courtesy of the City of Doral*



RSVP to PublicWorks@CityofDoral.com



+



The City of Doral is studying the possible future connection to Florida International University.

Please join us!

TUESDAY, SEPTEMBER 5TH

7:00 PM - 8:00 PM

**ISLANDS AT DORAL CLUBHOUSE
8250 NW 112 COURT**



For questions or comments, please contact us at:
PublicWorks@CityofDoral.com or 305-593-6740

FOLLOW US



@CITYOFDORAL





FIU Trolley Expansion Study

Public Workshop

June 28, 2017 - 1:00pm

Sign-In Sheet

NAME	TITLE/DEPARTMENT	PHONE NUMBER	EMAIL ADDRESS
Ezzaz Sadeghvaziri	Civil Engineering/Transportation	(305) 305-1598	esade@fiu.edu
FABOLA LAPORTE	Student	786 260 4358	flaporta@fiu.edu
Indiana Sacasa	Staff	786-910-8943	isacasa02@fiu.edu
Aline Mercado		786-488-4949 786 878-4131	Aralin77@gmail.com
CARLOS BERRIZ	Fleet Manager	(305) 742-4342	CBERRIZ@FIU.EDU
Sofia Rodriguez	Event planning/Student	786 515 5986	sofiar97@hotmail.com
K. Unwalla	Nursing Grant Admin	305 348 2979	Kunwalla@fiu.edu
V. Jacobs	HTS	305 348 4757	Vjacobs@fiu.edu
Nicole Diaz	Student	786-406-3140	ndiaz.157@fiu.edu
RAFAEL FERNANDEZ	STAFF	7-6959	RAFERNAN@FIU.ED
Consuelo Beck-Sague	Faculty	786-253-3928	beckssague@gmail.com
Pamela Murata	Student	561-212-6956	pmurata004@fiu.edu



FIU Trolley Expansion Study

Public Workshop

June 28, 2017 - 1:00pm

Sign-In Sheet

NAME	TITLE/DEPARTMENT	PHONE NUMBER	EMAIL ADDRESS
Karina Ocampo	Instructional Design Mgr / FIU Online	(305) 348-4277	kocampo@fiu.edu
Jennifer Corting	CCF / Intake Coord.		
Brenda Dome	Parking @ FIU	348-4366	Bdome@fiu.edu
LISSEY PEDROZA	Parking	7018	lpedroza@fiu.edu
HENRY F. CHENG	Mbr of ACADEMIC LEADERS	x7-7377	HKCHENG@FIU.FIU
ASHIM R PATIL	B.A	x7-6053	apatil@fiu.edu
CALVIN CHENG	REGISTRAR	(305) 348-8099	CHENG C@FIU.EDU
Nancy Cadavid	Director, Business Svcs	305-348-2171	ncada002@fiu.edu
Elizabeth Bejar	Vice President, AA	348-2151	bejare@fiu.edu
Yilin Xiao	ASM	348-2612	yilin.xiao@fiu.edu
Florence George	stat	348-3021	FGEORGE@FIU.EDU
Susana Bissr	student	786-451960	SVFS002@fiu.edu
Abigail Dominguez	PCARL. COM	786-4883987	adomingu@fiu.edu
Hachema Jimenez	student	786-6510119	hjimenez@fiu.edu



FIU Trolley Expansion Study

Public Workshop

June 28, 2017 - 1:00pm

Sign-In Sheet

NAME	TITLE/DEPARTMENT	PHONE NUMBER	EMAIL ADDRESS
Emely M Perez	Student	305 888 5073	emely414@FIU.edu
Valéry Hypolite	Student	786-367-0477	
Christophe Rodriguez	Student	786-444-9511	Crod385@fiu.edu
Ariana Garcia de Cacer	Student	754-204-2119	
Carlos Carrasco	Staff	305-348-2297	carrascc@fiu.edu
Rebecca Ramus	Student	954-756-3453	rlam001@fiu.edu
Sebastian Lozano	Student	786-202-1578	sloja001@fiu.edu
Camila Martinez	Student SGA	786 366 5367	cmart462@fiu.edu
Gadimi Hilton	City NMB	305-957-3523	Gadimi.Hilton@citynmb.com
Carlos Roche	Student FIU	305-509-2446	Croch020@fiu.edu
Mery Olivera	Staff	786-273-6739	moliv030@fiu.edu
William B. Barrero	Student	305 773 1325	Wbarr006@fiu.edu
Paula Moreno	Staff	305 348-1321	morenop@fiu.edu
Samantha Fernandes	Student	305-972-4557	



FIU Trolley Expansion Study

Public Workshop

June 28, 2017 - 1:00pm

Sign-In Sheet

NAME	TITLE/DEPARTMENT	PHONE NUMBER	EMAIL ADDRESS
Thrasher Anestel	Student	407-279-7116	aneestaltba@gmail.com
Astrid Arraras	Professor	786 863 4153	arrarasa@fiu.edu
Reyni Valerio	Staff /AAD	31484-3919	valerion@fiu.edu
Christopher Solano	Student	786-239-3612	CSolano20@fiu.edu
Elizabeth Guinand	Mother	305 9650721	eliquinand@mac.com
Aldres Baptiste	Student	305 5429721	arbg1997@gmail.com
* Nelly Navarro	Outreach - SFC	305-401-9151	nelly.navarro@wsp.com
Elizabeth Torres	Staff	(305) 348 7000	etorr095@fiu.edu
MarieFrance Nicolas	Student Assistant	239-703-9488	manicola@fiu.edu
DAISY Chiong DEZGADO	CARTA	305 348-2897	dchiongd@fiu.edu
Tiffany Greenwida	Student	772 300 9864	tgreen001@fiu.edu
Beth ORTIZ	PT Client Access Rep	305-724-3368	beortiz@fiu.edu
Cecilia	Alum	25-20-4634	ccetel@fiu.edu
Brian	Student	305-962-3332	bolieg@fiu.edu

[illegible]



FIU Trolley Expansion Study Public Workshop

June 28, 2017 - 1:00pm

Comment Form

The City of Doral is interested in receiving additional input from the Community.
Please add any information you would like us to consider in the space provided below.

The Doral Trolley provides great service to the community. I've taken the trolley before and it's way better than the other trolley that's riding. I think it will help also international students that can't afford a car. I like that it goes through 109 street to pick up students.

If you need more space, please use the back side of this form.

Should you want to provide input at a later time, please feel free to mail this comment form by
Friday, July 14, 2017 to:

City of Doral Public Works Department
City of Doral Government Center
8401 NW 53rd Street, 2nd Floor
Doral, FL 33166

Or via email to: PublicWorks@CityofDoral.com



FIU Trolley Expansion Study Public Workshop

June 28, 2017 - 1:00pm

Comment Form

The City of Doral is interested in receiving additional input from the Community.
Please add any information you would like us to consider in the space provided below.

For the stop in front of FIU Engineering Center maybe its better
to have pedestrian crossing pass or RRFB.

If you need more space, please use the back side of this form.

Should you want to provide input at a later time, please feel free to mail this comment form by
Friday, July 14, 2017 to:

City of Doral Public Works Department
City of Doral Government Center
8401 NW 53rd Street, 2nd Floor
Doral, FL 33166

Or via email to: PublicWorks@CityofDoral.com



FIU Trolley Expansion Study Public Workshop

June 28, 2017 - 1:00pm

Comment Form

The City of Doral is interested in receiving additional input from the Community.
Please add any information you would like us to consider in the space provided below.

I think this is a great idea to help the
students know around Doral.
Do you guys plan to go
to FIU RBC.

If you need more space, please use the back side of this form.

Should you want to provide input at a later time, please feel free to mail this comment form by
Friday, July 14, 2017 to:

City of Doral Public Works Department
City of Doral Government Center
8401 NW 53rd Street, 2nd Floor
Doral, FL 33166

Or via email to: PublicWorks@CityofDoral.com



FIU Trolley Expansion Study Public Workshop

June 28, 2017 - 1:00pm

Comment Form

The City of Doral is interested in receiving additional input from the Community.
Please add any information you would like us to consider in the space provided below.

I AM VERY EXCITED ABOUT THIS SERVICE AND LOOK
FORWARD TO USING IT.

If you need more space, please use the back side of this form.

Should you want to provide input at a later time, please feel free to mail this comment form by
Friday, July 14, 2017 to:

City of Doral Public Works Department
City of Doral Government Center
8401 NW 53rd Street, 2nd Floor
Doral, FL 33166

Or via email to: PublicWorks@CityofDoral.com



FIU Trolley Expansion Study Public Workshop

June 28, 2017 - 1:00pm

Comment Form

The City of Doral is interested in receiving additional input from the Community.
Please add any information you would like us to consider in the space provided below.

Thank you for the further improvements
being developed.

The main entrance where students usually
enter through is on 107th and 16th.
There should be an extended route to
enter 16th since most students enter
through there and it is closest to
students classes

If you need more space, please use the back side of this form.

Should you want to provide input at a later time, please feel free to mail this comment form by
Friday, July 14, 2017 to:

City of Doral Public Works Department
City of Doral Government Center
8401 NW 53rd Street, 2nd Floor
Doral, FL 33166

Or via email to: PublicWorks@CityofDoral.com



FIU Trolley Expansion Study Public Workshop

June 28, 2017 - 1:00pm

Comment Form

The City of Doral is interested in receiving additional input from the Community.
Please add any information you would like us to consider in the space provided below.

Thank you for providing and thinking
about the student in this County.
I personally don't live in Miami, but
I go to FIU. If you guys wanted
to expand that would really be
appreciated. My email is
anestaltba@gmail.com
Thank you

If you need more space, please use the back side of this form.

Should you want to provide input at a later time, please feel free to mail this comment form by
Friday, July 14, 2017 to:

City of Doral Public Works Department
City of Doral Government Center
8401 NW 53rd Street, 2nd Floor
Doral, FL 33166

Or via email to: PublicWorks@CityofDoral.com



FIU Trolley Expansion Study Public Workshop

June 28, 2017 - 1:00pm

Comment Form

The City of Doral is interested in receiving additional input from the Community.
Please add any information you would like us to consider in the space provided below.

These plans seem to be well-thought out, and I cannot
think of any criticism to provide for these proposals.

If you need more space, please use the back side of this form.

Should you want to provide input at a later time, please feel free to mail this comment form by
Friday, July 14, 2017 to:

City of Doral Public Works Department
City of Doral Government Center
8401 NW 53rd Street, 2nd Floor
Doral, FL 33166

Or via email to: PublicWorks@CityofDoral.com



FIU Trolley Expansion Study Public Workshop

June 28, 2017 - 1:00pm

Comment Form

The City of Doral is interested in receiving additional input from the Community.
Please add any information you would like us to consider in the space provided below.

I live in Doral and work at FIU.
Love the idea of using a trolley to
come to FIU. It is going to help
many FIU students. Thank you so much!!!
Please provide brochures/flyers with routes.

If you need more space, please use the back side of this form.

Should you want to provide input at a later time, please feel free to mail this comment form by
Friday, July 14, 2017 to:

City of Doral Public Works Department
City of Doral Government Center
8401 NW 53rd Street, 2nd Floor
Doral, FL 33166

Or via email to: PublicWorks@CityofDoral.com



FIU Trolley Expansion Study Public Workshop

June 28, 2017 - 1:00pm

Comment Form

The City of Doral is interested in receiving additional input from the Community.
Please add any information you would like us to consider in the space provided below.

This service is a great idea and the fact that it is free is fantastic. I will need to go to Doral for an internship and the trolley will be very helpful.

If you need more space, please use the back side of this form.

Should you want to provide input at a later time, please feel free to mail this comment form by
Friday, July 14, 2017 to:

City of Doral Public Works Department
City of Doral Government Center
8401 NW 53rd Street, 2nd Floor
Doral, FL 33166

Or via email to: PublicWorks@CityofDoral.com



FIU Trolley Expansion Study Public Workshop

June 28, 2017 - 1:00pm

Comment Form

The City of Doral is interested in receiving additional input from the Community.
Please add any information you would like us to consider in the space provided below.

Excellent idea !! maybe extend the
Route to the students living in the
on campus dorms so that they don't
have to walk so far a distance to the
~~the~~ PG 6 stop.

If you need more space, please use the back side of this form.

Should you want to provide input at a later time, please feel free to mail this comment form by
Friday, July 14, 2017 to:

City of Doral Public Works Department
City of Doral Government Center
8401 NW 53rd Street, 2nd Floor
Doral, FL 33166

Or via email to: PublicWorks@CityofDoral.com