

Countywide Bus and Auto/Rideshare Access to Transit Facility Assessment Study Executive Summary

Overview

Miami-Dade Transit (MDT) and the Miami-Dade Metropolitan Planning Organization (MPO) both seek to optimize access, utilization, and connectivity for passengers at five park-and-ride facilities that are currently at or quickly approaching parking capacity.

This assessment will provide conceptual improvement plan recommendations that will increase parking capacity, improve auto access as well as passenger connectivity to MDT services.

Study Coordination

The conceptual plan development process involved extensive coordination with both the Miami-Dade MPO and MDT planning staff. Initial efforts involved an extensive field review of each location that involved members of the consultant team as well as Miami-Dade County planning, operations, and engineering staff.

The study was also presented to the Transportation Planning Technical Advisory Committee (TPTAC) for purposes of obtaining additional input from a broader representation of stakeholders on proposed improvement plan recommendations for each of the five park-and-ride lots.

Transit Facility Inventory Assessment Tool

An inventory assessment tool for purposes of identifying auto, pedestrian, bicycle, and transit infrastructure and accessibility deficiencies was developed as part of this study.

The inventory assessment tool will assist MDT with planning improvements at existing transit facilities as well as assuring the development of future facilities comply with specific MDT service and design standards.

The transit facility inventory assessment tool was developed based upon national research to identify best industry practices and in collaboration with both the Miami-Dade MPO and MDT planning staff.

Park-and-Ride Improvement Plans

Park-and-ride improvement plan recommendations were prepared for the following five (5) transit facility locations:

- 1.) SW 152nd Street Park-and-Ride;
- 2.) SW 168th Street Park-and-Ride;
- 3.) SW 112th Avenue Park-and-Ride;
- 4.) SW 244th Street Park-and-Ride;
- 5.) SW 296th Street Park-and-Ride.

Conceptual Capital Cost Estimates

Based upon the conceptual improvement plan recommendations a capital cost estimate was prepared according to the latest unit cost information as obtained from the Florida Department of Transportation (FDOT) and Miami-Dade County. A summary of the conceptual cost estimate for each recommended improvement plan is presented in the following table.

Table 1: Conceptual Capital Cost Estimates

	SW 152nd St STATION	SW 168th St STATION	SW 112th Ave STATION	SW 244th St STATION	SW 296th St STATION
Pay Item	Item Subtotal	Item Subtotal	Item Subtotal	Item Subtotal	Item Subtotal
SITEWORK	\$ 460,938	\$ 253,925	\$ 773,670	\$ 353,236	\$ 382,054
SITE FEATURES					
SIGNING & PAVEMENT MARKINGS	\$ 23,047	\$ 12,697	\$ 38,684	\$ 17,662	\$ 19,103
LIGHTING	\$ 69,141	\$ 38,089	\$ 116,051	\$ 52,986	\$ 57,309
LANDSCAPE	\$ 13,829	\$ 7,618	\$ 23,211	\$ 10,598	\$ 11,462
IRRIGATION	\$ 9,219	\$ 5,079	\$ 15,474	\$ 7,065	\$ 7,642
EROSION CONTROL	\$ 4,610	\$ 2,540	\$ 7,737	\$ 3,533	\$ 3,821
8' HIGH PRIVACY WALL	\$ -	\$ 44,250	\$ 26,250	\$ -	\$ -
PARK & RIDE MONUMENT SIGN	\$ 5,000	\$ 5,000	\$ 5,000	\$ 5,000	\$ 5,000
GATEWAY FEATURE	\$ 60,000	\$ 60,000	\$ 30,000	\$ 60,000	\$ -
COMFORT STATION	\$ -	\$ -	\$ 60,000	\$ -	\$ -
CANOPY	\$ 150,500	\$ 105,000	\$ 149,723	\$ 101,889	\$ 131,639
BIKE CAGE	\$ 25,000	\$ 25,000	\$ 25,000	\$ 25,000	\$ 25,000
REAL TIME SIGNAGE	\$ 15,000	\$ 15,000	\$ 15,000	\$ 15,000	\$ 15,000
REAL TIME PARKING SPACE COUNTER	\$ 240,000	\$ 240,000	\$ 480,000	\$ -	\$ -
TICKET VENDING MACHINES	\$ 24,000	\$ 12,000	\$ 24,000	\$ 12,000	\$ 12,000
	\$ 639,346	\$ 572,273	\$ 1,016,130	\$ 310,733	\$ 287,976
Construction Cost Subtotal=	\$ 1,100,284	\$ 826,198	\$ 1,789,800	\$ 663,969	\$ 670,030
PROFESSIONAL SERVICES	\$ 396,106	\$ 297,432	\$ 644,328	\$ 239,031	\$ 241,212
Construction Cost Total=	\$ 1,496,390	\$ 1,123,630	\$ 2,434,128	\$ 903,000	\$ 911,242
Contingency (25% of total cost)	\$ 374,098	\$ 280,908	\$ 608,532	\$ 225,750	\$ 227,811
TOTAL ESTIMATED COST=	\$ 1,870,488	\$ 1,404,538	\$ 3,042,660	\$ 1,128,750	\$ 1,139,053

Note: Unit prices obtained from FDOT Miami-Dade Moving Average - January - December 2014 and Miami-Dade Unit Cost Data

A conceptual illustration for each park-and-ride improvement plan is presented on the following pages.

Figure 1: Busway Park-and-Ride at SW 152nd Street (SR 992) Proposed Improvement Plan

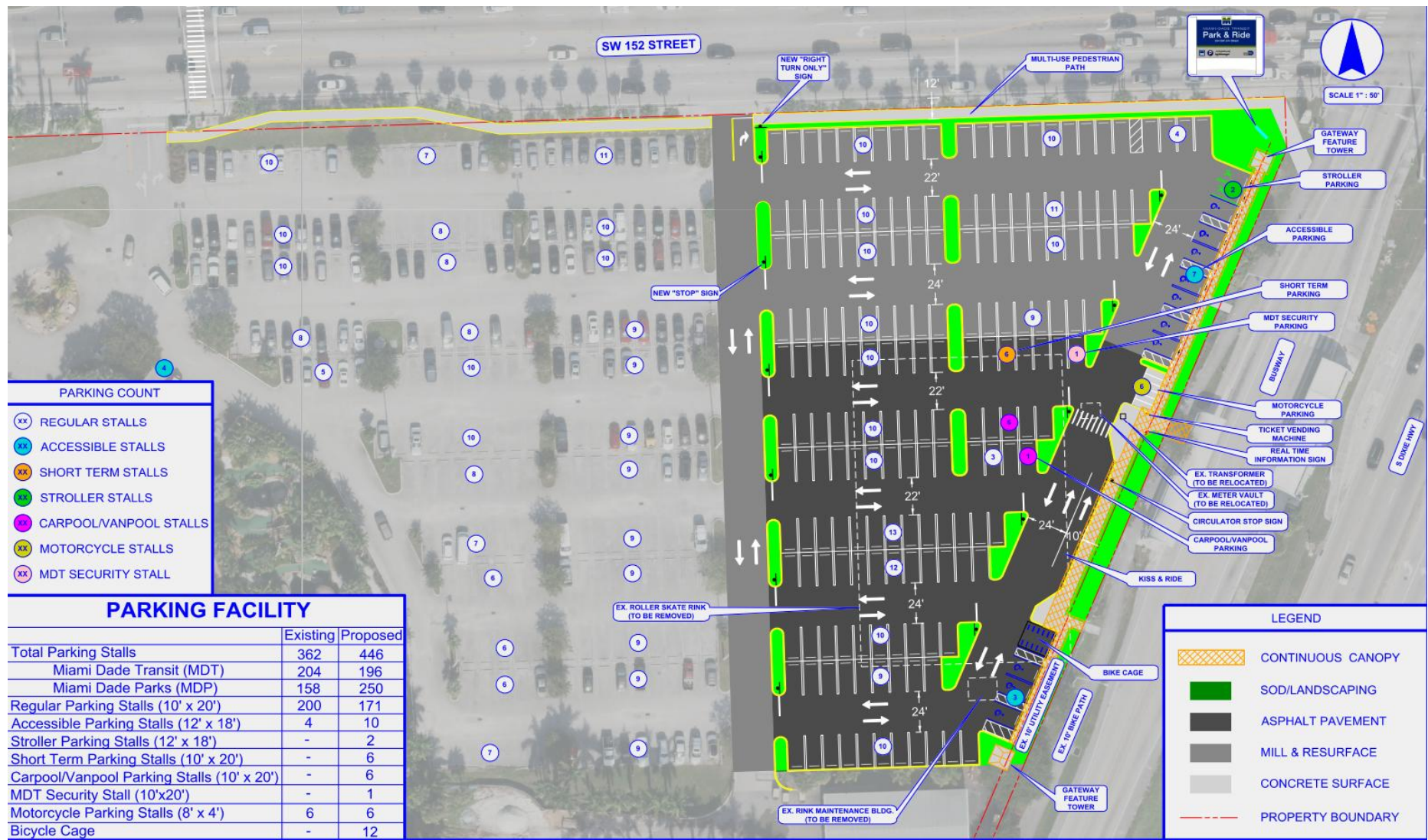


Figure 2: Busway Park-and-Ride at SW 168th Street Proposed Improvement Plan

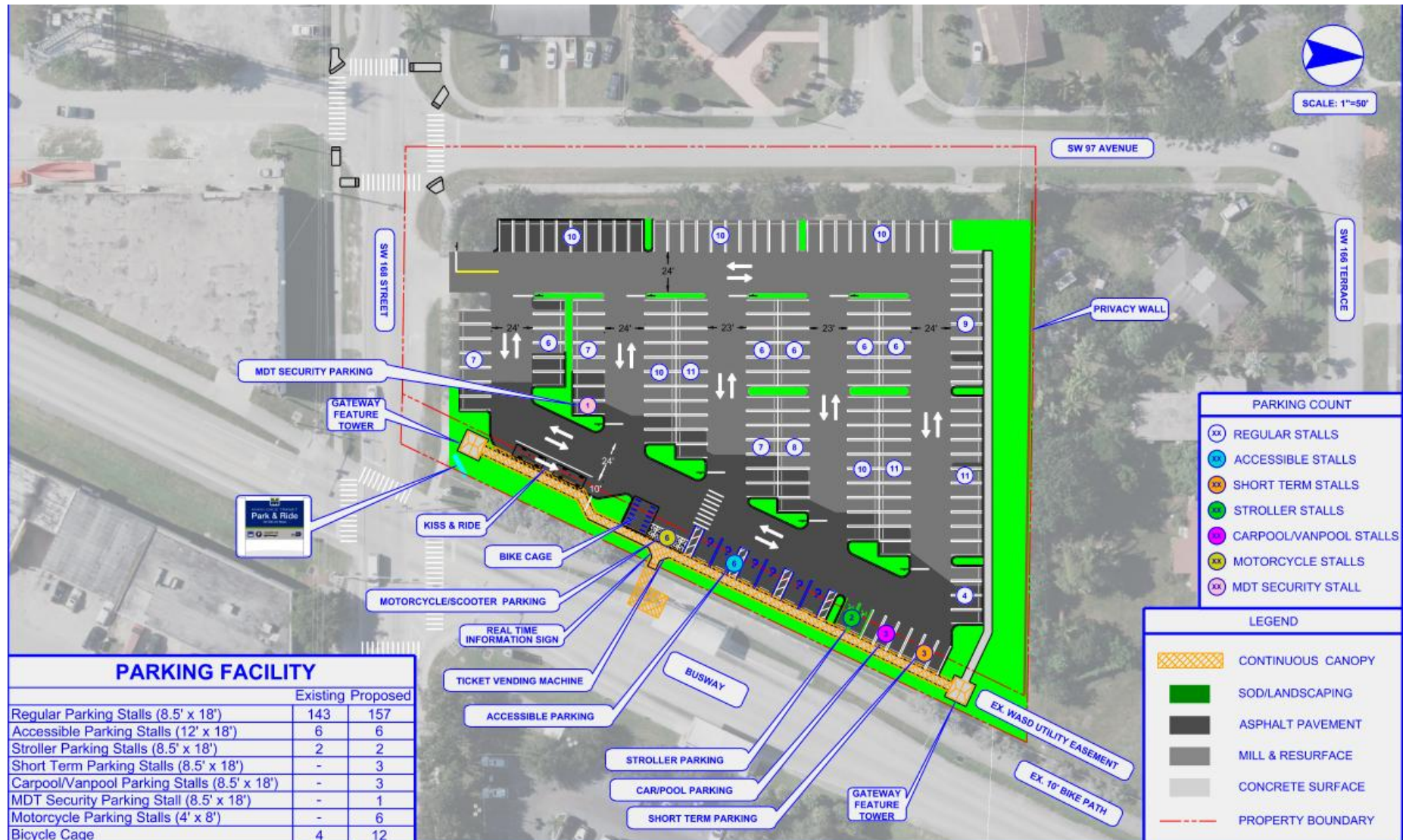


Figure 3: Busway Park-and-Ride at SW 112th Avenue Proposed Improvement Plan

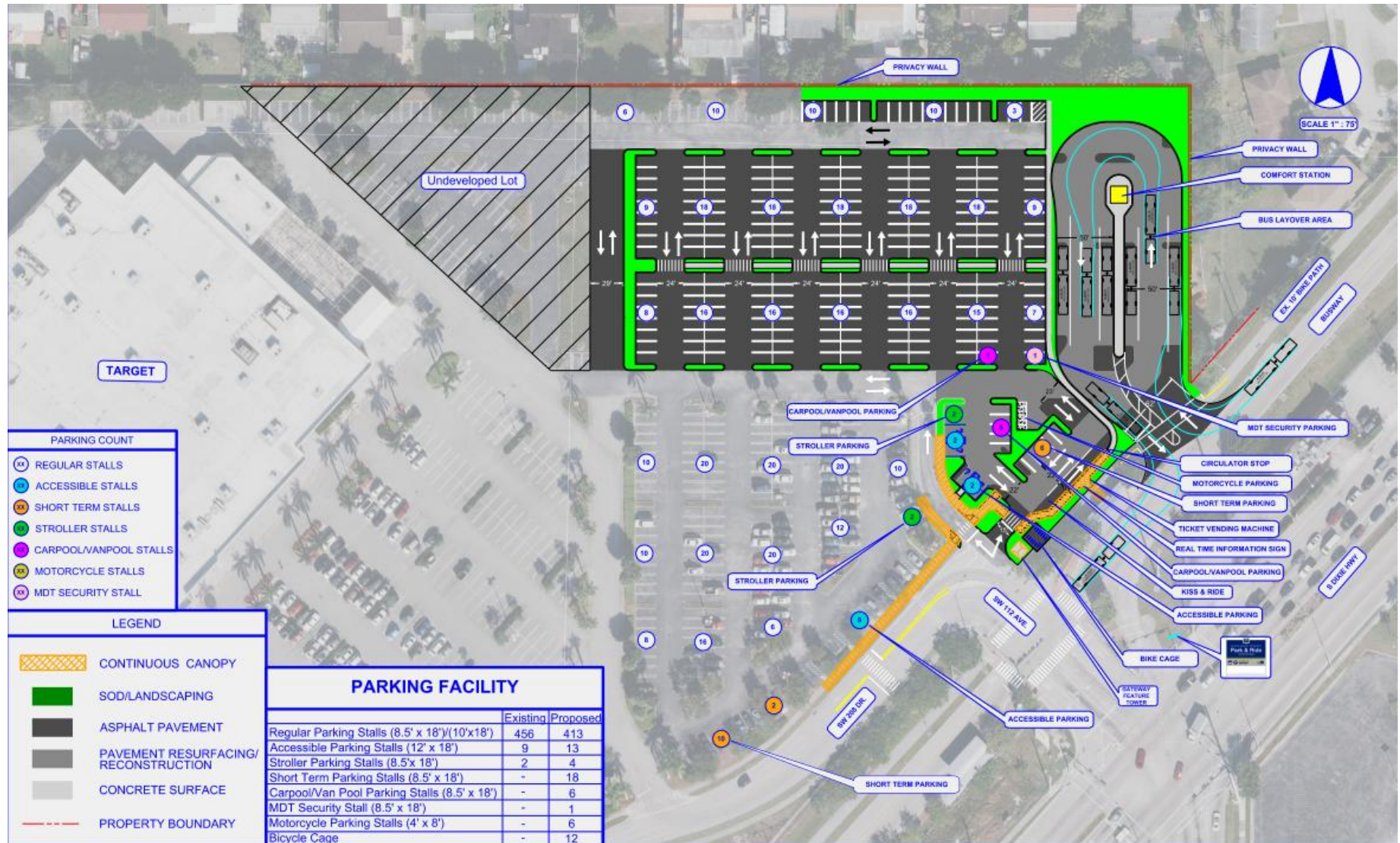


Figure 4: Busway Park-and-Ride at SW 244th Street Proposed Improvement Plan

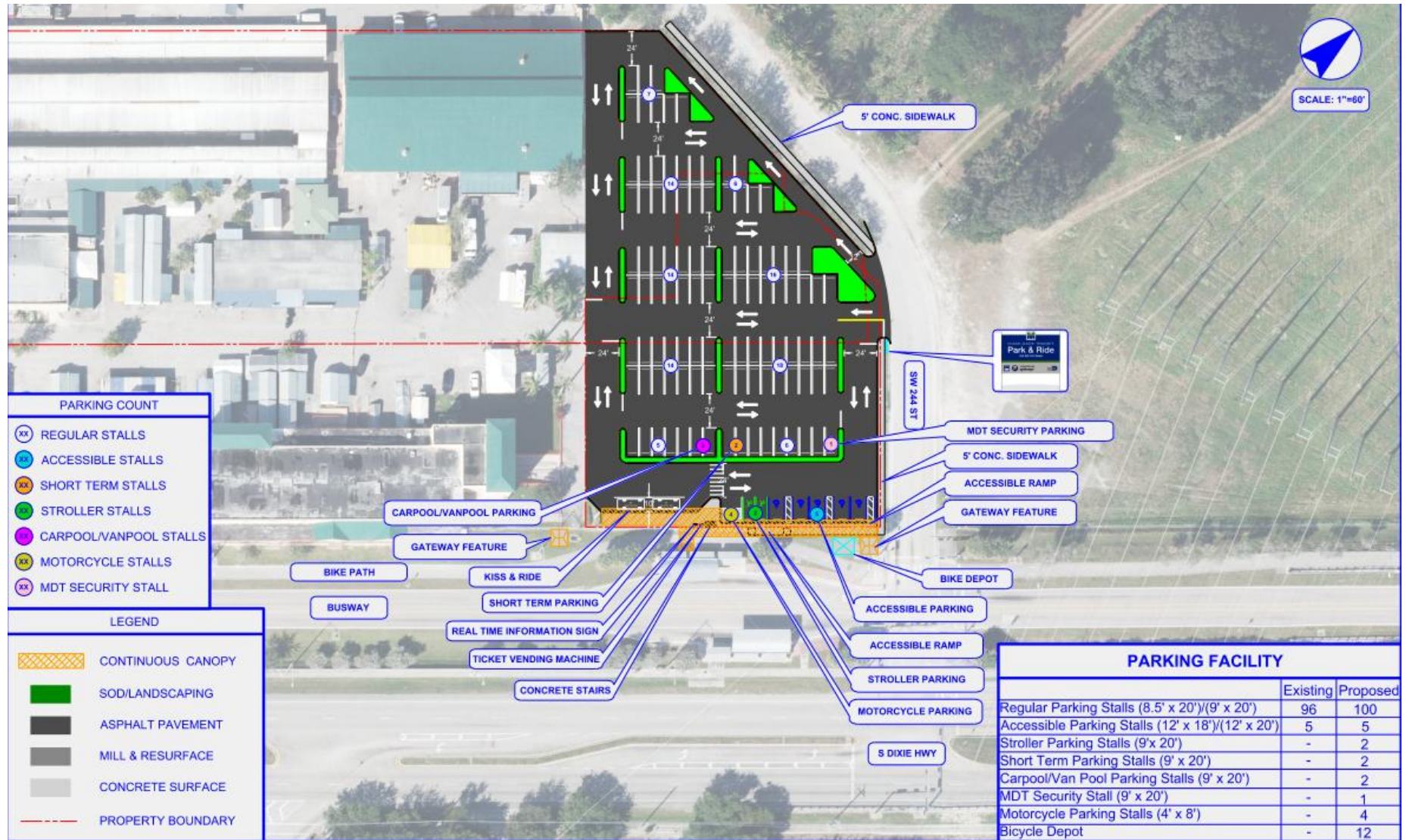
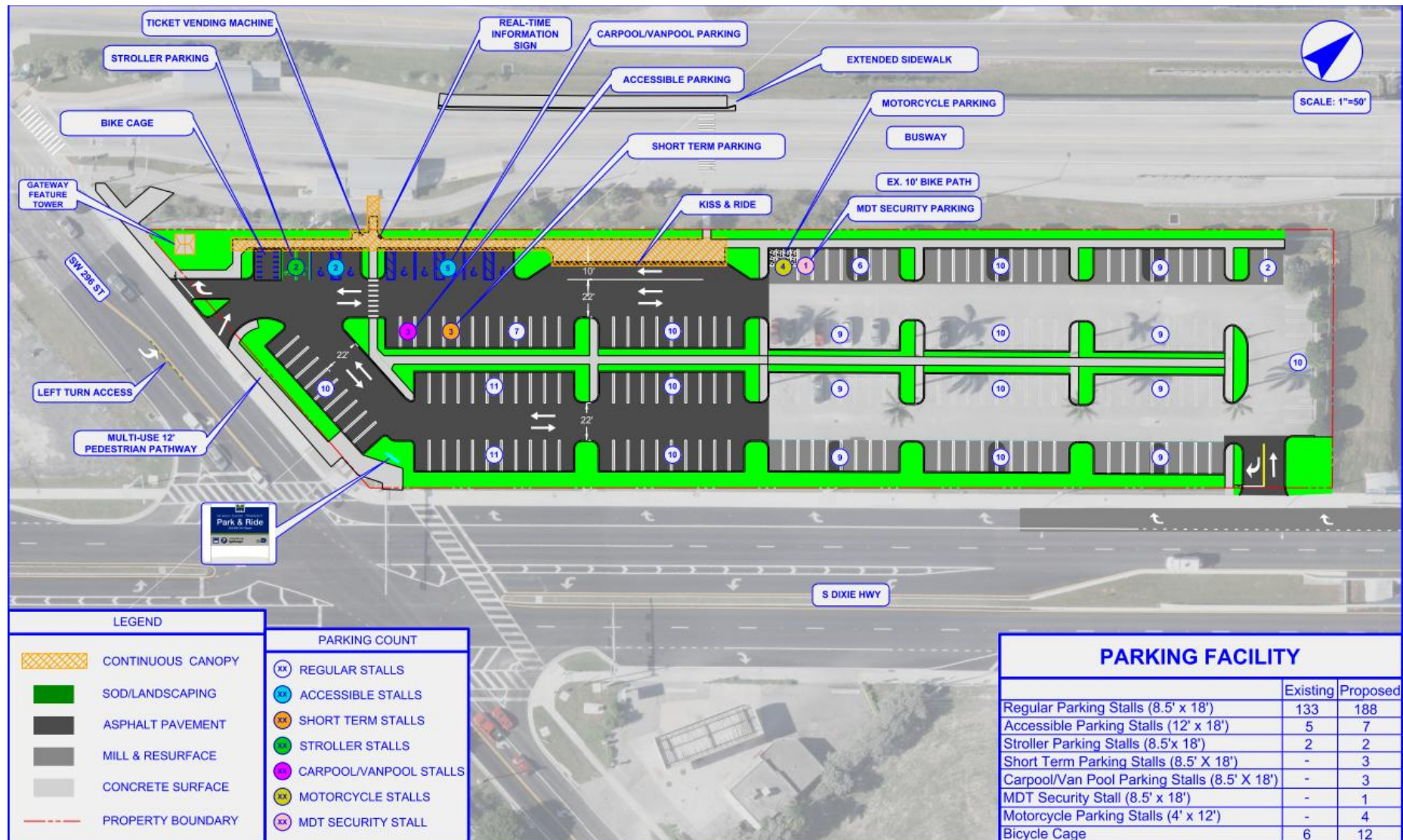


Figure 5: Busway Park-and-Ride at SW 296th Street Proposed Improvement Plan



This page intentionally left blank