



2019
**SAFE ROUTES TO
SCHOOL**
INFRASTRUCTURE
PLANS

PREPARED FOR

Miami-Dade Transportation
Planning Organization (TPO)



PREPARED BY

MARLIN Engineering, Inc.
15600 SW 288th Street, Suite 208
Miami, FL 33033
305.477.7575 | www.marlinengineering.com





The Miami-Dade TPO complies with the provisions of Title VI of the Civil Rights Act of 1964, which states: No person in the United States shall, on grounds of race, color, or national origin, be excluded from participation in, be denied the benefits of, or be subjected to discrimination under any program or activity receiving federal financial assistance. It is also the policy of the Miami-Dade TPO to comply with all of the requirements of the Americans with Disabilities Act. For materials in accessible format please call (305) 375-4507.

The preparation of this report has been financed in part from the U.S. Department of Transportation (USDOT) through the Federal Highway Administration (FHWA) and/or the Federal Transit Administration (FTA), the State Planning and Research Program (Section 505 of Title 23, U.S. Code) and Miami-Dade County, Florida. The contents of this report do not necessarily reflect the official views or policy of the U.S. Department of Transportation.



2019 SAFE ROUTES TO SCHOOL INFRASTRUCTURE PLANS

PREPARED FOR
Miami-Dade County Transportation
Planning Organization



Work Order # GPC VI-41

PREPARED BY
MARLIN Engineering Inc.





CONTENTS

A. OVERVIEW	1
Study Method	2
Safe Routes to School (SRTS) Prioritization Criteria	2
Ranking of Schools: 2018/2019 School Year SRTS application cycle	3
Student Travel Data	3
School Site Visits	4
Recommendations	4
B. SELECTED SCHOOLS	4
2019 Safe Routes to School Locations	5
C. RECOMMENDATIONS	6
North Miami Senior High School	6
Observations & Recommendations	6
Sample Infrastructure Recommendations	7
Operations and Maintenance Recommendations	7
Sample Operations and Maintenance Recommendations	8
North Miami Middle School	9
Observations & Recommendations	9
Sample Infrastructure Recommendations	10
Operations and Maintenance Recommendations	10
Sample Operations and Maintenance Recommendations	11
Miami Central Senior High School	12
Observations & Recommendations	12
Sample Infrastructure Recommendations	13
Operations and Maintenance Recommendations	13
Sample Operations and Maintenance Recommendations	14
Miami Jackson Senior High School	15
Observations & Recommendations	15
Sample Infrastructure Recommendations	16
Operations and Maintenance Recommendations	16
Sample Operations and Maintenance Recommendations	16
Carol City Middle School	18
Observations & Recommendations	18
Sample Infrastructure Recommendations	19





Operations and Maintenance Recommendations	19
Sample Operations and Maintenance Recommendations	20
North Dade Middle School.....	21
Observations & Recommendations	21
Sample Infrastructure Recommendations	22
Operations and Maintenance Recommendations	22
Sample Operations and Maintenance Recommendations	22
Ruben Dario Middle School	23
Observations & Recommendations	23
Sample Infrastructure Recommendations	24
Operations and Maintenance Recommendations	24
Sample Operations and Maintenance Recommendations	24
Miami Northwestern Senior High School	25
Observations & Recommendations	25
Sample Infrastructure Recommendations	26
Operations and Maintenance Recommendations	26
Sample Operations and Maintenance Recommendations	27
Hialeah Senior High School	28
Observations & Recommendations	28
Sample Infrastructure Recommendations	29
Operations and Maintenance Recommendations	29
Sample Operations and Maintenance Recommendations	29
Georgia Jones-Ayers Middle School.....	30
Observations & Recommendations	30
Sample Infrastructure Recommendations	31
Operations and Maintenance Recommendations	31
Sample Operations and Maintenance Recommendations	32
APPENDIX A.....	34
Operations and Maintenance Table	34
APPENDIX B	39
Prioritization Tables	39
APPENDIX C	41
Safe Routes to School Applications.....	41



A. OVERVIEW

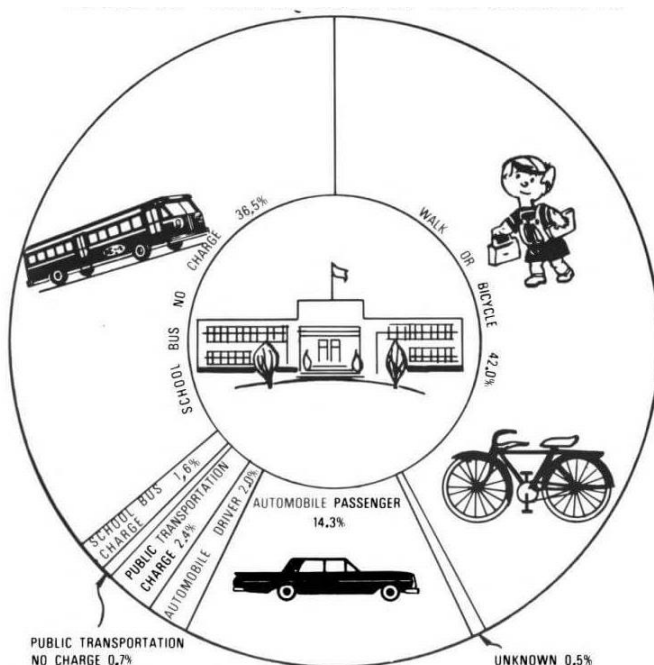
Safe Routes to School (SRTS) is a Federal program funded by the Federal Highway Administration. The Goal of the SRTS program is to provide students and parents with educational programming and upgraded infrastructure that improves safety and convenience for those traveling to and from school by foot, bike, and/or transit. The first modern SRTS U.S. program began in 1997 in Bronx, NY and has since coordinated and managed over \$1.15 billion in infrastructure plans to partnering schools across the United States. The Miami- Dade Transportation Planning Organization (TPO) manages the Miami-Dade Safe Routes to School Infrastructure Plans program, and partnering agencies include the Florida Department of Transportation (FDOT) District 6, Miami-Dade County Public Schools (MDCPS) and Miami-Dade Department of Transportation and Public Works (DTPW).

The most common form of infrastructure upgrades that qualify under this program are improvements that facilitate walkability and bikeability such as: filling sidewalk gaps, installing or enhancing crosswalks, improving signage and wayfinding, installing bike lanes and bike parking. Other more detailed upgrades may include: upgrading traffic control devices, installing parking restrictions, upgrading facilities to be ADA compliant, and more.

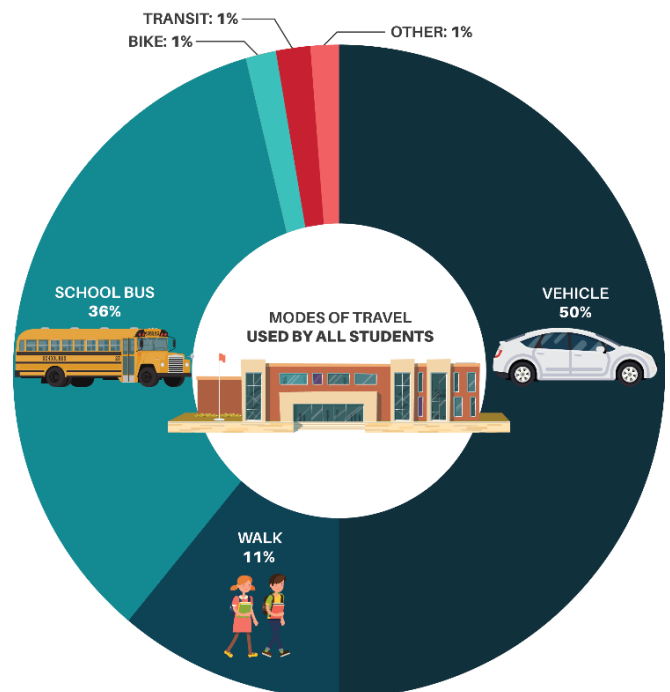
In addition to promoting infrastructure improvements, the Safe Routes to School Program encourages use of the comprehensive “5 E’s” approach to facilitate safer walking and biking. The FDOT Community Traffic Safety Team (CTST) facilitates active participation in Engineering, Education, Enforcement, Encouragement, and Evaluation efforts at schools to ensure a holistic approach to improving walking and biking for students. The CTST membership includes the School Board, TPO, DTPW, FDOT, law enforcement, University of Miami’s WalkSafe and BikeSafe programs and others involved in student safety and transportation. This multi-disciplinary, inter- agency coordination helps move the process forward from application through implementation.

The 2019 Safe Routes to School Infrastructure Plans are a continuation of previous efforts by the TPO that have been taking place since the mid-2000s. Each year, the Miami-Dade TPO selects priority schools to be studied for Safe Routes to School improvements.

FHWA National Mode Split Data Over Time



FHWA 1970



FHWA 2009



Study Method

The two objectives of this study are:

1. Develop Safe Routes to School recommendations for ten selected Elementary/Middle/K-8 Center, and High Schools, identify safe routes, infrastructure improvements, conceptual cost estimates, and create a Safe Route walking map.
2. Prepare FDOT Safe Routes to School infrastructure grant applications for each selected school.

Deliverables for this study include a completed Safe Routes to School Infrastructure Plans application to be submitted to FDOT. All applications can be found in Appendix C.

The 2019 Safe Routes to School Infrastructure recommendations were developed by conducting site visits at each school, and by processing information obtained from interviews with school crossing guards, school resource officers, discussions with school administrators, and from parent and classroom surveys that asked questions regarding walking and biking conditions within a mile of the schools. All information collected was analyzed to determine infrastructure recommendations to include in the Safe Routes to School application and the best Safe Route to recommend for students. If any deficiencies were observed that were outside of the scope of Safe Routes to School, they were documented and will be provided to MDCPS, Miami-Dade DTPW, or to school administrators for consideration using other funding sources.

Safe Routes to School (SRTS) Prioritization Criteria

As part of the Miami-Dade TPO's Safe Routes to School Plans 2011, a quantitative method was developed for prioritizing elementary and K-8 schools for SRTS infrastructure improvements. The TPO introduced this quantitative prioritization to remove the subjectivity and streamline the process of identifying schools with the greatest need for SRTS infrastructure improvements. This approach was based on a National Center for Safe Routes to School methodology published by the Institute of Transportation Engineers. The methodology was updated based on lessons learned in the Safe Routes to School 2013 Infrastructure Plans.

In 2017 the SRTS program was expanded to include middle and high schools. With this new funding opportunity, the TPO has prioritized the middle and high schools using the same methodology. The table below explains the methodology's prioritization factors.

Prioritization Factors Table

Factors	Notes
Percent of students living within 0.5 miles	The proximity of student's residence to school is likely to impact the propensity to walk to school. Therefore, schools with a high proportion of students living within a 0.5-mile radius could gain greater benefits through SRTS infrastructure improvements. The percent of students living within 0.5 miles was estimated based on the information provided by MDCPS.
Bicycle and pedestrian crashes	A high number of pedestrian and bicycle crashes may represent unsafe conditions and inadequate infrastructure. Crash data were obtained for the seven-year period between 2012 and 2018.
Juvenile pedestrian crashes	A history of juvenile pedestrian crashes may be an indicator of safety challenges experience by student pedestrians and could also be a potential factor in the parents' decision making on student's travel mode





	to school. Crash data were obtained for the seven-year period between 2012 and 2018.
Percent of students walking to school*	SRTS improvements targeting schools with a high percentage of student pedestrians could encourage more students to walk to school and remove barriers that cause students to walk in less than ideal conditions. This information is collected by WalkSafe annually through surveys.
Traffic volume on the nearest major road	The presence of a nearby major street is likely to present a barrier for safe walking to school. Traffic data were obtained from the FDOT.
Percent of students eligible for free or reduced lunch	Eligibility for free/reduced lunch program is considered to be a surrogate variable of income and hence a determining factor of student's travel model to school. This information was obtained from MDCPS.

**Percent of students walking to school was assumed to be the most influential factor and was weighted by a factor of two.*

Ranking of Schools: 2018/2019 School Year SRTS application cycle

A list of middle and high public schools in Miami-Dade County was obtained from MDCPS. The data were obtained for each factor listed in the table. Schools were prioritized using the process outlined below:

- » Rank schools based on the six individual factors. The result of this step is six separate ranks based on individual variables.
- » Apply a factor of two to the 'percent of students walking to school' factor.
- » Calculate a composite ranking based on the individual rankings to develop a prioritized list of schools for consideration of future SRTS plan development.

All MDCPS facilities were considered, including elementary, middle, and high schools. To date, SRTS has programmed over \$11 million at 98 elementary and K-8 facilities and one high school. Middle and high school facilities currently show a greater need for improvements. In addition, last year in Miami-Dade County more students were walking and biking to middle and high school than to elementary and K-8 schools (Academic Year 2017-2018 Detailed Report of Results, University of Miami and Miami-Dade County Public Schools School Traffic Survey). As such, middle and high facilities were prioritized for the current cycle of applications.

Appendix B includes the resulting comprehensive ranking lists for middle and high schools. At the October 11, 2018 CTST meeting, 5 middle schools and 5 high schools were identified to be submitted for the 18/19 cycle based on the prioritization and the recommendations from the CTST SRTS subcommittee meeting on October 5, 2018.

Student Travel Data

MDCPS provided the research team with data on school attendance boundaries and student residence locations. Proposed Safe Routes were developed by connecting student residence locations to school locations through observation and use of survey data. WalkSafe provided information from the annual MDCPS student travel survey. In addition to this, Student Travel Tallies and Parent Surveys were conducted to obtain data on the number of students walking and biking as well as what concerns parents have about their child's route to school.





School Site Visits

Each of the ten selected schools was visited during arrival or dismissal time to observe the walking and biking patterns of students as they arrived or departed from school. The observation teams walked the school neighborhoods, interviewed crossing guards when possible, spoke to parents, and took photos to document conditions within the school attendance boundary area. The entire boundary area was driven to survey and observe roadway signage, sidewalk, intersection and crossing conditions.

Recommendations

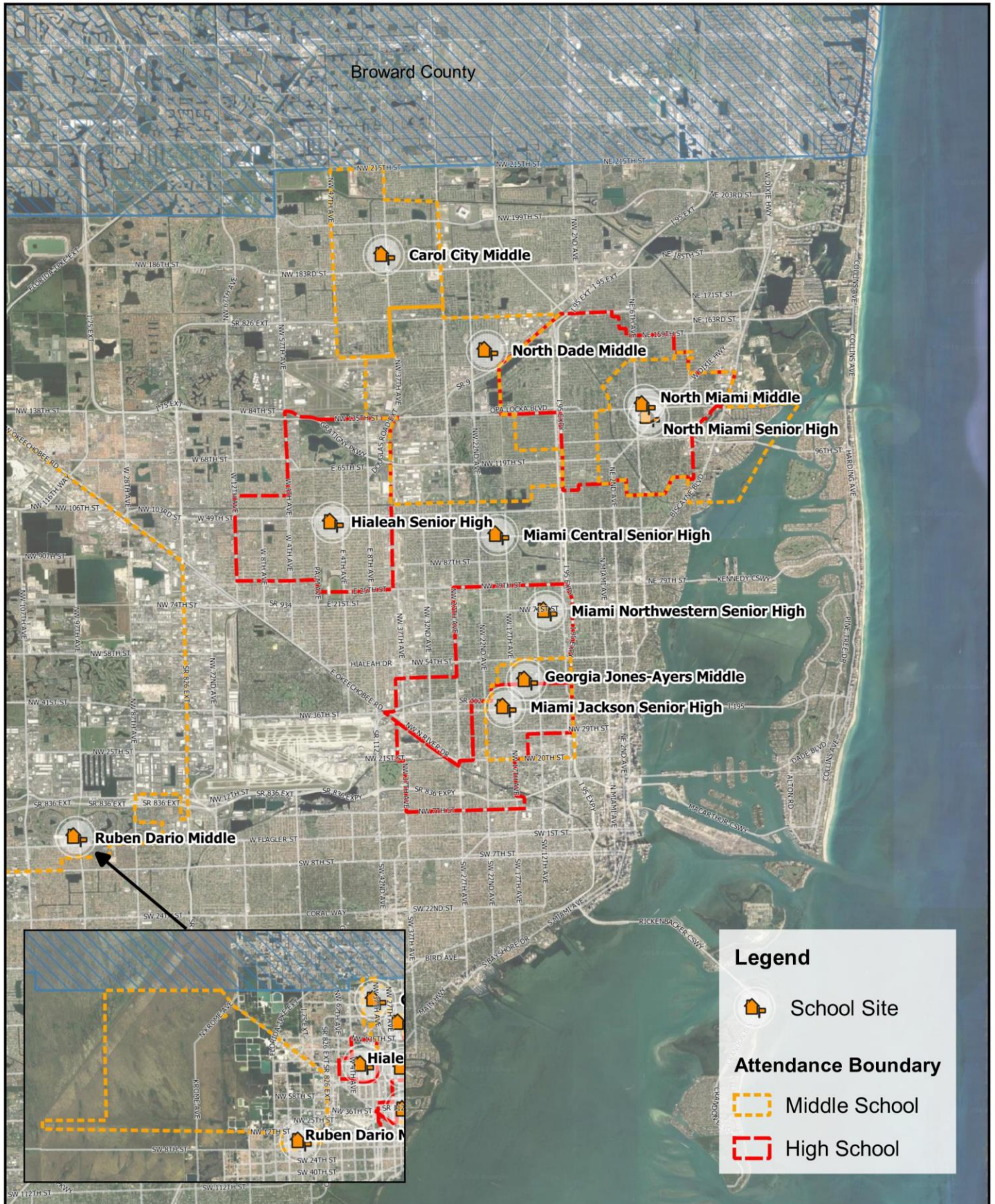
Recommendations for infrastructure improvements were developed using the guidelines for eligible improvements for Safe Routes to School infrastructure funding applications. Proposed Safe Routes were also identified based on existing infrastructure and recommended improvements. Any overlaps with previous approved applications were not included.

SRTS cost estimates were developed for each application. Cost estimates submitted for proposed Safe Routes to School infrastructure improvements are comprehensive and include the cost of materials, mobilization, Maintenance of Traffic (MOT), design, administration, and Construction Engineering Inspection (CEI).

B. SELECTED SCHOOLS

Rank	School	Applicant	Final Cost Estimate
1	North Miami Senior High	School Board	\$562,852.00
2	North Miami Middle	County	\$552,672.00
3	Miami Central Senior High	School Board	\$729,967.00
4	Miami Jackson Senior High	County	\$772,771.00
5	Carol City Middle	School Board	\$813,579.00
6	North Dade Middle	County	\$350,738.00
7	Ruben Dario Middle	School Board	\$274,109.00
8	Miami Northwestern Senior High	County	\$798,779.00
9	Hialeah Senior High	School Board	\$907,513.00
10	Georgia Jones-Ayers Middle	County	\$1,447,336.00
Total:			\$7,210,316.00

2019 Safe Routes to School Locations





C. RECOMMENDATIONS

North Miami Senior High School



	Enrollment	2,338
	Estimated percent of students that live within ½ mile walk	15.7%
	Estimated percent of students that walk or bike to school	83%
	Estimated Cost of Recommendations	\$562,852.00

Observations & Recommendations

The 2013-2017 crash history illustrates a significant amount of juvenile crash data within the school's boundaries, approximately 20% of all pedestrian and bicycle crashes involved persons under the age of 18. A number of juvenile crashes occurred near the school along W. Dixie Highway, NE 135th Street, NE 6th Avenue, NE 7th Avenue and NE 8th Avenue. Discussions with the school resource officer revealed that speeding regularly occurs along NE 8th Avenue, where the school's primary entrance is located. Other nearby facilities include Cagni Park, North Miami Middle School, Arch Creek Elementary School, Holy Cross Lutheran Christian Day School and City of North Miami Library.

A significant number of students walk or bike to school, improving conditions around the school could improve safety and mobility for existing students, in addition to improving conditions for other students who walk along these routes to other nearby schools and facilities.

Outdated school zone and pedestrian signage was witnessed around the school. Numerous standard crosswalks were document and should be upgraded to high emphasis crosswalks. Various streets had missing crosswalks and signage.

Infrastructure recommendations include crosswalk additions and enhancements, intersection push-button upgrades, signage updates, detectable warning surfaces and ADA ramps.

Regarding operations and maintenance, recommendations include sidewalk repairs, debris removal, tree trimming, and repainting pavement markings.

Sample Infrastructure Recommendations



Proposed high-emphasis crosswalk and signage



Missing detectable warning surface and crosswalks



Outdated Signage

Operations and Maintenance Recommendations

Item	Roadway	From/At	To	Details
1	NE 135 St	NE 3 Ct		Sidewalk Repair (15 FT) on the NW Corner
2	NE 2 Ct	NE 135 St	North	West Sidewalk Repair (10 FT) - Utility pole blocking sidewalk
3	NE 3 Ct	NE 136 St	NE 135 St	West Sidewalk Repair (12 FT)
4	NE 3 Ct	NE 136 St	North	East Sidewalk Repair (30 FT)
5	NE 3 Ct	NE 136 St	North	East Sidewalk Repair (42 FT)

**Full list of operations and maintenance recommendations can be found in the Appendix.*

Sample Operations and Maintenance Recommendations



Leaning Sign



Overgrown vegetation impeding sidewalk



Crosswalk in need of restriping



North Miami Middle School



	Enrollment	910
	Estimated percent of students that live within ½ mile walk	32.7%
	Estimated percent of students that walk or bike to school	68%
	Estimated Cost of Recommendations	\$552,672.00

Observations & Recommendations

The 2013-2017 crash history illustrates a significant amount of juvenile crash data within the school's boundaries, approximately 17% of all pedestrian and bicycle crashes involved persons under the age of 18. There is a significant amount of pedestrian juvenile crash incidents within a half-mile of the school property. Other nearby facilities include Cagni Park, North Miami Senior High School, Arch Creek Elementary School, Holy Cross Lutheran Christian Day School and City of North Miami Library.

A significant number of students walk or bike to school, improving conditions around the school could improve safety and mobility for existing students, in addition to improving conditions for other students who walk along these routes to other nearby schools and facilities.

Outdated school zone and pedestrian signage was witnessed around the school. Numerous standard crosswalks were documented and should be upgraded to high emphasis crosswalks. Various streets had missing crosswalks and signage.

Infrastructure recommendations include crosswalk additions and enhancements, intersection push-button upgrades, signage updates, detectable warning surfaces, installation of missing sidewalks and ADA improvements.

Regarding operations and maintenance, recommendations include sidewalk repairs, debris removal, tree trimming, maintenance of school property and repainting pavement markings.

Sample Infrastructure Recommendations



Upgrade signs with Flashing Beacon Assembly



Install Sidewalk



Upgrade Pedestrian Signage and Crosswalks to High-Emphasis Crosswalks



Install ADA Ramp & Detectable Warning Surface

Operations and Maintenance Recommendations

Item	Roadway	From/At	To	Details
1	NE 135 St	East	NE 7 Ave	Downed "No Turn on Red When Ped Crossing" Sign
2	NE 9 Ave	NE 135 St	NE 137 St	School Property Fence in Disrepair East Side
3	NE 137 St	West	NE 9 Ave	School Property Fence in Disrepair North Side
4	NE 136 St	NE 4 Ave	NE 5 Ave	Litter and Debris along Roadway
5	NE 135 St	NE 6 Ave	NE 4 Ave	Garbage Cans Blocking North Sidewalk - Impeding Pedestrian Mobility

**Full list of operations and maintenance recommendations can be found in the Appendix.*

Sample Operations and Maintenance Recommendations



Down Pedestrian Yield Sign



School Fence in Disrepair



Debris Impeding Sidewalk Access



Overgrown Landscaping Impeding Sidewalk

Miami Central Senior High School



	Enrollment	1,667
Estimated percent of students that live within ½ mile walk		8.6%
Estimated percent of students that walk or bike to school		40%
Estimated Cost of Recommendations		\$729,967.00

Observations & Recommendations

The 2013-2017 crash history illustrates a significant amount of juvenile crash data within the school's boundaries, approximately 13% of all pedestrian and bicycle crashes involved persons under the age of 18. There is a significant amount of pedestrian juvenile crash incidents within a half-mile of the school property. Other nearby facilities include William H. Turner Technical High School, COPE Center North Middle School, Miami Park Elementary School, North Central Bank Library, Miami-Dade Fire Station 7, and North Shore Medical Center Miami.

A significant number of students walk or bike to school, improving conditions around the school could improve safety and mobility for existing students, in addition to improving conditions for other students who walk along these routes to other nearby schools and facilities.

Outdated school zone and pedestrian signage was witnessed around the school. Numerous standard crosswalks were documented and should be upgraded to high emphasis crosswalks. Various streets had missing crosswalks and signage.

Infrastructure recommendations include crosswalk additions and enhancements, intersection push-button upgrades, signage updates, detectable warning surfaces, installation of missing sidewalks and ADA improvements.

Regarding operations and maintenance, recommendations include sidewalk repairs, debris removal, tree trimming, maintenance of school property and repainting pavement markings.

Sample Infrastructure Recommendations



Upgrade to High Emphasis Crosswalks



ADA Accessibility and Upgrade to High Emphasis Crosswalks



Missing crosswalks and ADA tactile surfaces

Operations and Maintenance Recommendations

Item	Roadway	From/At	To	Details
1	NW 95 St	NW 19 Ave		Restripe Crosswalk
2	NW 91 St.	NW 22 Ave		Restripe Crosswalk
3	NW 95 St.	NW 19 Ave	NW 18 Ave	Restripe Crosswalk
4	NW 95 St	NW 21 Ave		Restripe Crosswalk
5	NW 19 Ave	NW 96 St	NW 95 Ter	Maintenance of Landscaping - Trees Blocking School Zone Sign, Southbound

**Full list of operations and maintenance recommendations can be found in the Appendix.*

Sample Operations and Maintenance Recommendations



Debris Blocking Sidewalk



Downed Sign



Sidewalk Repair



Landscape blocking traffic sign



Miami Jackson Senior High School



	Enrollment	1,506
Estimated percent of students that live within ½ mile walk		21%
Estimated percent of students that walk or bike to school		82%
Estimated Cost of Recommendations		\$772,771.00

Observations & Recommendations

School frontage is on NW 36th St., a busy commercial corridor. Students were observed at dismissal crossing NW 36th St. at NW 19th, NW 18th and NW 17th Avenues and also walking along NW 17th Avenue. Heavy car traffic is along NW 17th as it provides access under the 112 bridge. Speeding and congestion are a concern in the area. Providing new signs and pavement markings will increase driver expectations for student pedestrians. Nearby facilities include Melrose Park, Juan Pablo Duarte Park, West Buena Vista Mini Park and Charles Hadley (Manor) Park.

A significant number of students walk or bike to school, improving conditions around the school could improve safety and mobility for existing students, in addition to improving conditions for other students who walk along these routes to other nearby schools and facilities.

Outdated school zone and pedestrian signage was witnessed around the school. Numerous standard cross walks were documented and should be upgraded to high emphasis crosswalks. Various streets had missing crosswalks and signage.

Infrastructure recommendations include crosswalk additions and enhancements, intersection push-button upgrades, signage updates, detectable warning surfaces and ADA improvements.

Regarding operations and maintenance, recommendations include debris removal, repainting pavement markings, and signage repair.

Sample Infrastructure Recommendations



Push button upgrade



Install Crosswalk markings

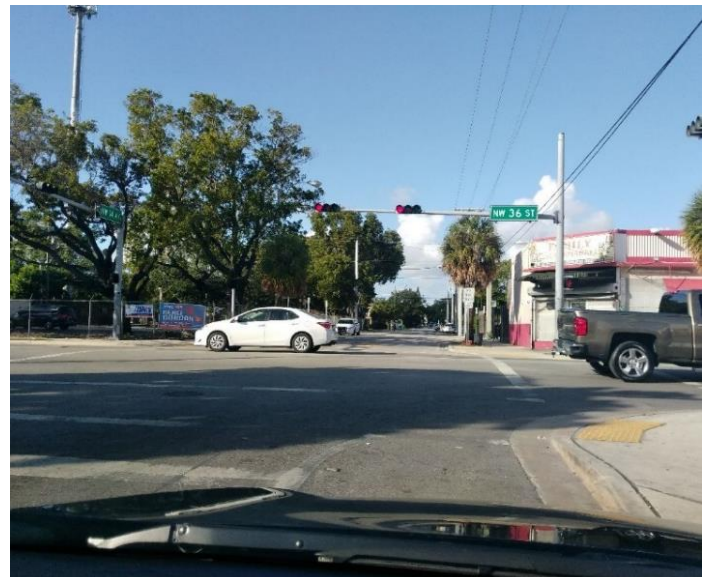
Operations and Maintenance Recommendations

Item	Roadway	From/At	To	Details
1	NW 17 Ave			Under 112 bridge – Garbage
2	NW 17 Ave	NW 36 St		Faded Crosswalk
3	NW 36 St	NW 18 Ave		School Zone Sign on Ground – north side front of school
4	NW 17 Ave	NW 34 St		Bent Sign
5	NW 38 St	NW 19 Ave		Street Sign Bent

Sample Operations and Maintenance Recommendations



School Zone sign on ground



Faded pavement markings



Leaning school sign

Carol City Middle School



	Enrollment	358
Estimated percent of students that live within ½ mile walk		23.2%
Estimated percent of students that walk or bike to school		60%
Estimated Cost of Recommendations		\$813,579.00

Observations & Recommendations

The 2013-2017 crash history illustrates a significant amount of juvenile crash data within the school's boundaries, approximately 25% of all pedestrian and bicycle crashes involved persons under the age of 18. Discussions with the school resource officer indicated that a student had been struck by a vehicle in the previous school year on NW 37th Avenue just north of NW 183th Street. Other nearby facilities include Barbara Hawkins Elementary School, Carol City Senior High School, Miami Carol City Park, United States Postal Service, Carol City Early Learning Center and Miami Jobs Corp Center.

A significant number of students walk or bike to school, improving conditions around the school could improve safety and mobility for existing students, in addition to improving conditions for other students who walk along these routes to other nearby schools and facilities.

Outdated school zone and pedestrian signage was witnessed around the school. Numerous standard crosswalks were documented and should be upgraded to high emphasis crosswalks. Various streets had missing crosswalks and signage.

Infrastructure recommendations include crosswalk additions and enhancements, intersection push-button upgrades, signage updates, detectable warning surfaces, installation of missing sidewalks and ADA improvements.

Regarding operations and maintenance, recommendations include sidewalk repairs, debris removal, tree trimming, maintenance of school property and repainting pavement markings.

Sample Infrastructure Recommendations



ADA Accessibility



Install Sidewalk



Upgrade to School Flashing Beacon



Upgrade Sign

Operations and Maintenance Recommendations

Item	Roadway	From/At	To	Details
1	NW 187 St	NW 37 Ave		Restripe Crosswalk
2	NW 37 Ave	South	NW 189 St	Both Pedestrian Entrances to School Locked
3	NW 188 St	West	NW 188 St	Pedestrian Entrance Locked
4	NW 183 St	NW 37 Ave		Pedestrian Push Button Pole Missing on NWC
5	NW 188 St	NW 37 Ave	NW 39 Ave	Restripe Pavement Markings
6	NW 191 St	NW 39 CT	NW 39 Ave	Restripe Pavement Markings



7	NW 188 St	East	NW 39 Ave	Maintenance of Landscaping - Hedges Partially Blocking South Sidewalk Access
8	NW 188 St	NW 37 Ave	NW 39 Ave	Downed Sign
9	NW 176 St	NW 32 Ave		Restripe Crosswalk
10	NW 32 Ave	North	NW 176 St	Restripe Crosswalk

**Full list of operations and maintenance recommendations can be found in the Appendix.*

Sample Operations and Maintenance Recommendations



Pedestrian Push Button Pole Missing



Sidewalk Repairs



Landscape Trimming



Restripe Pavement Markings

North Dade Middle School



	Enrollment	487
	Estimated percent of students that live within ½ mile walk	16.2%
	Estimated percent of students that walk or bike to school	43%
	Estimated Cost of Recommendations	\$350,738.00

Observations & Recommendations

Students from the south must cross the canal on NW 22nd Avenue. 487 students attend N. Dade Middle, with improvements to pavement markings and signage, additional students could safely walk or bike to school. Nearby facilities include Bunche Park and Pool, Bunche Park Tennis and Pool, Jeb Estates Park and Segal Park.

43% of students walk or bike to school, improving conditions around the school could improve safety and mobility for existing students, in addition to improving conditions for other students who walk along these routes to other nearby schools and facilities.

Outdated school zone and pedestrian signage was witnessed around the school. Numerous standard crosswalks were documented and should be upgraded to high emphasis crosswalks. Various streets had missing crosswalks and signage.

Infrastructure recommendations include crosswalk additions and enhancements, intersection push-button upgrades, signage updates, detectable warning surfaces and ADA improvements.

Regarding operations and maintenance, recommendations include debris removal, repainting pavement markings, and signage repair.

Sample Infrastructure Recommendations



Upgrade Pushbutton



Upgrade signage

Operations and Maintenance Recommendations

Item	Roadway	From/At	To	Details
1	NW 17 St	NW 19 Ave		Lights Not Working
2	Bunch Park Dr	NW 20 Ave	NW 22 Ave	Dangerous Screw jutting out in pavement
3	Bunch Park Dr	NW 20 Ave	NW 22 Ave	Litter on south side
4	Bunch Park Dr	NW 20 Ave	NW 22 Ave	Debris on south side

Sample Operations and Maintenance Recommendations



Light out on beacon



Debris and accessibility



Ruben Dario Middle School



Enrollment	580
Estimated percent of students that live within ½ mile walk	29.1%
Estimated percent of students that walk or bike to school	90.1%
Estimated Cost of Recommendations	\$274,109.00

Observations & Recommendations

The majority of students live to the west of the school. The school is located at the intersection of W. Flagler Street and SW 97th Avenue, a busy 6-lane state roadway. Speeding is a concern in the area. Providing new signs and pavement markings will increase driver expectations for student pedestrians. Nearby facilities include Ruben Dario Park and Carow Park and Tennis Courts.

90% of students walk or bike to school, improving conditions around the school could improve safety and mobility for existing students, in addition to improving conditions for other students who walk along these routes to other nearby schools and facilities.

Outdated school zone and pedestrian signage was witnessed around the school. Numerous standard crosswalks were documented and should be upgraded to high emphasis crosswalks. Various streets had missing crosswalks and signage.

Infrastructure recommendations include crosswalk additions and enhancements, intersection push-button upgrades, signage updates, detectable warning surfaces and ADA improvements.

Regarding operations and maintenance, recommendations include debris removal, repainting pavement markings, and signage repair.



Sample Infrastructure Recommendations



Upgrade signage

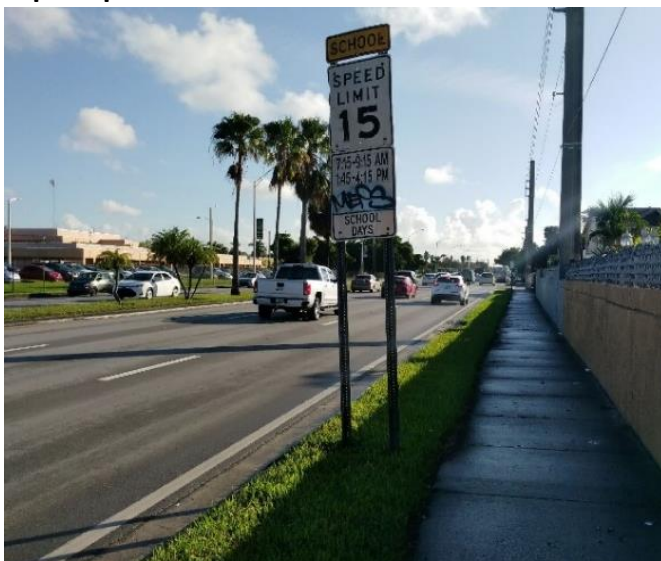


Install Crosswalk

Operations and Maintenance Recommendations

Item	Roadway	From/At	To	Details
1	Flagler	W 101 Ave		School Zone Sign bent
2	Flagler	SW 98 Ct	SW 98 Ave	Speed Zone graffiti
3	NW 72 Ave @ Blue Riviera Crandon entrance			East leg north side-flooding

Sample Operations and Maintenance Recommendations



Upgrade signage



Leaning sign



Miami Northwestern Senior High School



	Enrollment	1,482
	Estimated percent of students that live within ½ mile walk	15.9%
	Estimated percent of students that walk or bike to school	45%
	Estimated Cost of Recommendations	\$798,779.00

Observations & Recommendations

To the northwest of the school, on NW 12th Avenue, is a bridge over the railroad tracks. Numerous student live north of the school and travel on the sidewalk on the bridge. School enrollment is 1,482. A large housing development is located southwest of school and student must cross NW 12th Avenue. Nearby facilities include Broadway Park, Alonzo Kelly Park, African Square Park and Belafonte-Tacolcy Park.

45% of students walk or bike to school, improving conditions around the school could improve safety and mobility for existing students, in addition to improving conditions for other students who walk along these routes to other nearby schools and facilities.

Outdated school zone and pedestrian signage was witnessed around the school. Numerous standard cross walks were documented and should be upgraded to high emphasis crosswalks. Various streets had missing crosswalks and signage.

Infrastructure recommendations include crosswalk additions and enhancements, intersection push-button upgrades, signage updates, detectable warning surfaces and ADA improvements.

Regarding operations and maintenance, recommendations include debris removal, repainting pavement markings, and signage repair.

Sample Infrastructure Recommendations



Install Tactile surfaces



Upgrade signage

Operations and Maintenance Recommendations

Item	Roadway	From/At	To	Details
1	NW 12 Ave	NW 67 St	NW 71 St	School Zone sign bent
2	NW 12 Ave	NW 71 St	NW 74 St	Missing sign and light cover
3	NW 12 Ave	NW 71 St	NW 74 St	Faded School Pavement Marking facing south
4	NW 11 Ave	NW 27 St	NW 66 St	Bent Speed Limit Sign
5	NW 67 St	NW 11 Ave	NW 10 Ave	Bent Sign-facing west
6	NW 10 Ave	NW 70 St		Bent Sign
7	NW 67 St	NW 8 Ave		Illegal Dumping- North Leg

Sample Operations and Maintenance Recommendations



Bent sign



Illegal dumping



Upgrade/Bent sign

Hialeah Senior High School



Enrollment	2,059
Estimated percent of students that live within ½ mile walk	11.9%
Estimated percent of students that walk or bike to school	35.1%
Estimated Cost of Recommendations	\$907,513.00

Observations & Recommendations

The school has a large campus south of E 49th Street, a busy commercial corridor. Angled parking is adjacent to the school. With an enrollment of 2,059 students, the school is located at the intersection of E 49th Street and E 4th Avenue, the intersection of 2 major roadways in the community. Nearby facilities include Milander Park, O'Quinn Park and Bight Park and Pool.

35% of students walk or bike to school, improving conditions around the school could improve safety and mobility for existing students, in addition to improving conditions for other students who walk along these routes to other nearby schools and facilities.

Outdated school zone and pedestrian signage was witnessed around the school. Numerous standard crosswalks were documented and should be upgraded to high emphasis crosswalks. Various streets had missing crosswalks and signage.

Infrastructure recommendations include crosswalk additions and enhancements, intersection push-button upgrades, signage updates, detectable warning surfaces and ADA improvements.

Regarding operations and maintenance, recommendations include repainting pavement markings and signage and push button repair.



Sample Infrastructure Recommendations



Missing sidewalk connection



Install High emphasis crosswalk markings

Operations and Maintenance Recommendations

Item	Roadway	From/At	To	Details
1	E 49 St	E 3 Ave	E 4 Ave	School Zone Pavement Markings south side
2	W 41 St	E 41 St		Wires on ped Button SE Corner
3	E 4 Ave	E 49 St	E 48 St	School Pavement Markings faded

Sample Operations and Maintenance Recommendations



Faded Pavement Markings

Georgia Jones-Ayers Middle School



Enrollment	422
Estimated percent of students that live within ½ mile walk	28.7%
Estimated percent of students that walk or bike to school	64%
Estimated Cost of Recommendations	\$1,447,336.00

Observations & Recommendations

The 2013-2017 crash history illustrates 13% of pedestrian and bicycle crash data involved persons under the age of 18. Discussions with the school resource officer indicated that a number of students come from the south and must cross at the 112 highway along one of the major arterials to get to school, the officer also indicated that a number of students also travel from the west. Other nearby facilities include Lenora Braynon Smith Elementary School, City of Miami Fire Station 12, Charles Hadley Park, Crestwood Park, West Buena Vista Park, and the Samuel K. Johnson Youth Center.

Approximately 64% of students walk or bike to school, many traversing major arterials to arrive to school. Improving conditions around the school could improve safety and mobility for existing students, in addition to improving conditions for other students who walk along these routes to other nearby schools and facilities.

Outdated school zone and pedestrian signage was witnessed around the school. Numerous standard crosswalks were documented and should be upgraded to high emphasis crosswalks. Various streets had missing crosswalks, sidewalks and signage.

Infrastructure recommendations include crosswalk additions and enhancements, intersection push-button upgrades, signage updates, detectable warning surfaces, installation of missing sidewalks and ADA improvements.

Regarding operations and maintenance, recommendations include sidewalk repairs, debris removal, tree trimming and repainting pavement markings.

Sample Infrastructure Recommendations



Update Signage



Upgrade to High-Emphasis Crosswalk, ADA Upgrades, add Signage



Add Tactile Surface



Add Crosswalks

Operations and Maintenance Recommendations

Item	Roadway	From/At	To	Details
1	NW 46 St	NW 13 Ave	NW 12 Pl	Repaint Crosswalk
2	NW 46 St	NW 13 Ave		Repaint Crosswalk
3	NW 46 St	NW 14 Ave		Repaint Crosswalk
4	NW 18 Ave	NW 46 St	NW 4 St	Maintenance of Landscaping – Trim Hedges
5	NW 41 St	NW 41 St	NW 18 Ave	Equipment Blocking Sidewalk Access
6	NW 7 Ave	NW 43 St		Leaning “Stop” Sign



7	NW 13 Ave	NW 46 St	NW 45 St	East Sidewalk Repair (50 FT) / Car Blocking Sidewalk Access
8	NW 46 St	NW 14 Ave	NW 13 Pl	South Sidewalk Repair (40 FT)
9	NW 13 Ave	NW 41 St	NW 40 St	West Sidewalk Repair (35 FT) / Garbage Cans Blocking Sidewalk Access
10	NW 13 Ave	NW 42 St	NW 41 St	East Sidewalk Repair (10 FT)

**Full list of operations and maintenance recommendations can be found in the Appendix.*

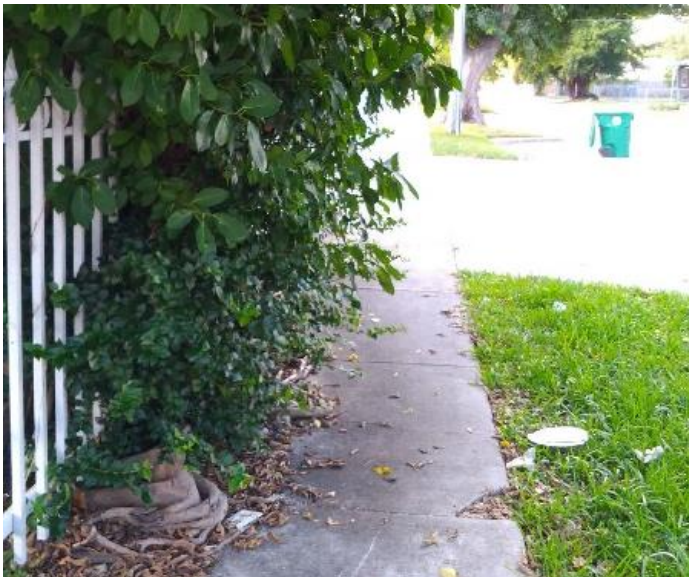
Sample Operations and Maintenance Recommendations



Restripe Crosswalk



Maintenance of Landscaping



Maintenance of Landscaping



Leaning Adopt A Road Sign



Sidewalk Repairs



APPENDIX A

Operations and Maintenance Table

North Miami Senior High School				
Item	Roadway	From/At	To	Details
1	NE 135 ST	NE 3 CT		Sidewalk Repair (15 FT) on the NW Corner
2	NE 2 CT	NE 135 ST	NORTH	West Sidewalk Repair (10 FT) - Utility pole blocking sidewalk
3	NE 3 CT	NE 136 ST	NE 135 ST	West Sidewalk Repair (12 FT)
4	NE 3 CT	NE 136 ST	NORTH	East Sidewalk Repair (30 FT)
5	NE 3 CT	NE 136 ST	NORTH	East Sidewalk Repair (42 FT)
6	NE 3 CT	NE 136 ST	NE 135 ST	West Sidewalk Repair (48 FT)
7	NE 3 CT	NE 137 ST		East Sidewalk Repair
8	NE 7 AVE	NE 133 ST		Repaint Crosswalk
9	NE 7 AVE	NE 136 ST	NE 137 ST	West Sidewalk Repair (10 FT)
10	NE 5 AVE	NE 135 ST	NE 136 ST	West Sidewalk Repair (10 FT)
11	NE 136 ST	NE 6 AVE	NE 5TH AVE	North Sidewalk Repair (12 FT)
12	NE 5 AVE	NE 135 ST	NE 136 ST	East Sidewalk Repair (15 FT) and Maintenance of Sidewalk
13	W DIXIE HWY	NE 137 ST		West Sidewalk Repair (15 FT)
14	NE 139 ST	NE 5 AVE	NE 6 AVE	North Sidewalk Repair (18 FT)
15	NE 145 ST	NE 5 AVE		Sidewalk Repair (18 FT) and Maintenance of Landscape on SWC
16	NE 136 ST	NE 6 AVE		Sidewalk Repair (20 FT) SWC
17	NE 140 ST	NE 5 AVE	NE 4 AVE	South Sidewalk Repair (20 FT)
18	NE 5 AVE	NE 140 ST	SOUTH	East Sidewalk Repair (24 FT)
19	NE 140 ST	NE 5 AVE	NE 4 AVE	South Sidewalk Repair (24 FT)
20	NE 136 ST	NE 5 AVE	NE 4 AVE	North Sidewalk Repair (30 FT)
21	NE 136 ST	NE 6 AVE	WEST	North Sidewalk Repair (30 FT)
22	NE 139 ST	NE 6 AVE	NE 5 AVE	South Sidewalk Repair (34 FT)
23	NE 135 ST	NE 9 AVE	NE 8 AVE	North Sidewalk Repair (40 FT)
24	NE 145 ST	NE 5 AVE		South Sidewalk Repair (48 FT)
25	NE 5 AVE	NE 139 ST	NE 138 ST	East Sidewalk Repair (52 FT)
26	NE 5 AVE	NE 140 ST	NE 139 ST	East Sidewalk Repair (54 FT)
27	NE 140 ST	NE 5 AVE	NE 4 AVE	North Sidewalk Repair (54 FT)
28	NE 136 ST	NE 6 AVE	NE 5 AVE	North Sidewalk Repair (60 FT)
29	NE 136 ST	NE 5 AVE	NE 6 AVE	North Sidewalk Repair (60 FT)
30	NE 5 AVE	NE 145 ST	SOUTH	West Sidewalk Repair (72 FT)
31	NE 136 ST	NE 6 AVE	WEST	South Sidewalk Repair (75 FT)
32	NE 135 ST	NE 3 CT		Sidewalk Repair (15 FT) on the NW Corner
North Miami Middle School				
Item	Roadway	From/At	To	Details
1	NE 135 ST	EAST	NE 7 AVE	Downed "No Turn on Red When Ped Crossing" Sign
2	NE 9 AVE	NE 135 ST	NE 137 ST	School Property Fence in Disrepair East Side
3	NE 137 ST	WEST	NE 9 AVE	School Property Fence in Disrepair North Side
4	NE 136 ST	NE 4 AVE	NE 5 AVE	Litter and Debris along Roadway
5	NE 135 ST	NE 6 AVE	NE 4 AVE	Garbage Cans Blocking North Sidewalk - Impeding Pedestrian Mobility
6	NE 5 AVE	NE 135 ST	NE 136 ST	North Sidewalk Repair (10ft) / Car Blocking Sidewalk
7	NE 7 AVE	NE 135 ST		Leaning Sign
8	NE 135 ST	WEST	NE 6 AVE	North Sidewalk Repair (30ft). Landscaping impeding sidewalk.
9	NE 135 ST	NE 8 AVE		Downed "Staff Only Parking" Sign and "Pedestrian Crossing Sign" at Faculty Parking Entrance/Exit.
10	NE 7 AVE	NE 137 ST		Repaint Crosswalk.
11	NE 136 ST	NE 7 AVE		Cars Parked on Swale on North and South Side of NE 136 St. Dead sod.
12	NE 7 AVE	NE 137 ST	NE 138 ST	Cars Impeding Sidewalk Access on eastside of NE 7 Ave
13	NE 135 ST	NE 7 AVE	NE 8 AVE	Repair Speed Sign - Sign Not Working.
14	NE 137 ST	NE 4 AVE	NE 5 AVE	Debris Blocking Northside ROW Access.
15	NE 139 ST	NE 4 AVE	NE 5 AVE	Overgrown Landscape Impeding South Sidewalk Access.
16	NE 5 AVE	NE 138 ST	NE 137 ST	West Sidewalk Repair (48ft) / Debris Blocking ROW Access.
17	NE 5 AVE	NE 139 ST		Overgrown Landscape Blocking Sidewalk Access on NEC.
18	NE 141 ST	NE 2 CT	NE 3 CT	Overgrown Landscape Blocking Pedestrian Sign on Northside.
19	NE 140 ST	NE 5 AVE	NE 6 AVE	South Sidewalk Repair (60ft) and Overgrown Landscaping Blocking Sidewalk





20	NE 2 CT	NE 141 ST	NE 142 ST	Debris and Landscaping Blocking Access to East Sidewalk.
21	NE 2 CT	NORTH	NE 135 ST	West Sidewalk Repair (10 FT)
22	NE 141 ST	NE 2 CT		Restripe Crosswalk.
23	NE 2 CT	NORTH	NE 135 ST	Overgrown Landscape Blocking Access to West Sidewalk.
24	NE 7 AVE	NE 135 ST		Dead Palm Trees on the NEC at the School Entrance.
25	NE 137 ST	NE 8 AVE	NE 9 AVE	South Sidewalk Repair (40x10 FT)
26	NE 136 ST	NE 5 AVE		West Sidewalk Repair (5 FT)
27	NE 137 ST	NE 8 AVE	NE 7 AVE	South Sidewalk Repair (10 FT)
28	NE 137 ST	NE 8 AVE		South Sidewalk Repair (10 FT)
29	NE 9 AVE	NE 136 ST	NE 137 ST	West Sidewalk Repair (10 FT)
30	NE 135 ST	NE 9 AVE	NE 8 AVE	North Sidewalk Repair (10 FT)
31	NE 137 ST	NE 8 AVE	NE 7 AVE	South Sidewalk Repair (15 FT)
32	NE 137 AVE	NE 9 AVE	WEST	Sidewalk Repair (15 FT)
33	NE 135 ST	NE 9 AVE	NE 8 AVE	West Sidewalk Repair (15 FT)
34	NE 135 ST	NE 7 AVE	NE 8 AVE	Sidewalk Repair (15 FT)
35	NE 135 ST	NE 9 AVE	NE 8 AVE	North Sidewalk Repair (20 FT)
36	NE 137 ST	NE 8 AVE	NE 9 AVE	South Sidewalk Repair (40 FT)
37	NE 137 AVE	NE 8 AVE	NE 9 AVE	South Sidewalk Repair (100 FT)
38	NE 137 ST	NE 6 AVE	WEST	South Sidewalk Repair (96 FT)

Miami Central Senior High School

Item	Roadway	From/At	To	Details
1	NW 95 ST	NW 19 AVE		Restripe Crosswalk
2	NW 91 ST	NW 22 AVE		Restripe Crosswalk
3	NW 95 ST	NW 19 AVE	NW 18 AVE	Restripe Crosswalk
4	NW 95 ST	NW 21 AVE		Restripe Crosswalk
5	NW 19 AVE	NW 96 ST	NW 95 TER	Maintenance of Landscaping - Trees Blocking School Zone Sign, Southbound
6	NW 19 AVE	NW 96 ST	NW 95 TER	Sidewalk Repair (35 FT)
7	NW 17 AVE	NW 95 ST		Pedestrian Countdown Signal Pointed Away from Pedestrians
8	NW 17 AVE	NORTH OF	NW 95 ST	Leaning "Adopt A Road" Sign
9	NW 17 AVE	NW 98 ST	NW 99 ST	Fence along East has a Hole
10	LITTLE RIVER BLVD	SOUTH	NW 95 ST	Sidewalk Repair (15 FT) and Maintenance of Landscape, Blocking Partial Sidewalk Access
11	NW 95 ST	NW 12 AVE		Pedestrian Signal Lights Not Working Properly
12	NW 95 ST	NW 17 AVE	NW 15 CT	Restripe Pavement Markings on Roadway
13	NW 87 ST	NW 15 AVE	NW 17 AVE	Debris Blocking Access to North Sidewalk
14	NW 87 ST	NW 15 AVE	NW 16 AVE	Maintenance of Sidewalk - Shrubs Partially Blocking North Sidewalk
15	NW 12 AVE	NW 99 ST		Restripe Crosswalk
16	NW 95 ST	LITTLE RIVER DR	NW 14 AVE	Maintenance of Landscape, Shrubs Partially Blocking North Sidewalk
17	LITTLE RIVER DR	NW 95 ST		"Right Turn Only" Sign Down
18	NW 95 ST	NW 12 AVE	NW 10 AVE	Maintenance of Landscaping - Trees Blocking Pedestrian Crossing Sign
19	NW 10 AVE	NORTH	NW 95 ST	West Sidewalk Repair (50 FT)
20	LITTLE RIVER BLVD	NW 93 ST	NW 92 TER	West Sidewalk Repair (40 FT)
21	NW 10 AVE	NW 95 TER		Southwest Corner Sidewalk Repair (25 FT)
22	NW 18 AVE	NW 93 TER	NW 94 ST	West Sidewalk Repair (20 FT)

Miami Jackson Senior High School

Item	Roadway	From/At	To	Details
1	NW 17 AVE			Under 112 bridge - Garbage
2	NW 17 AVE	NW 36 ST		Faded Crosswalk
3	NW 36 ST	NW 18 AVE		School Zone Sign on Ground - north side front of school
4	NW 17 AVE	NW 34 ST		Bent Sign
5	NW 38 ST	NW 19 AVE		Street Sign Bent

Carol City Middle School

Item	Roadway	From/At	To	Details
1	NW 187 ST	NW 37 AVE		Restripe Crosswalk
2	NW 37 AVE	SOUTH	NW 189 ST	Both Pedestrian Entrances to School Locked
3	NW 188 ST	WEST	NW 188 ST	Pedestrian Entrance Locked
4	NW 183 ST	NW 37 AVE		Pedestrian Push Button Pole Missing on NWC





5	NW 188 ST	NW 37 AVE	NW 39 AVE	Restripe Pavement Markings
6	NW 191 ST	NW 39 CT	NW 39 AVE	Restripe Pavement Markings
7	NW 188 ST	EAST	NW 39 AVE	Maintenance of Landscaping - Hedges Partially Blocking South Sidewalk Access
8	NW 188 ST	NW 37 AVE	NW 39 AVE	Downed Sign
9	NW 176 ST	NW 32 AVE		Restripe Crosswalk
10	NW 32 AVE	NORTH	NW 176 ST	Restripe Crosswalk
11	NW 37 AVE	NW 187 ST	NW 183 ST	Maintenace of Landscape - Sod Partailly Blocking West Sidewalk Access
12	NW 37 CT	NW 191 ST		Pool Water at West Sidewalk Connection
13	SCHOOL	GROUND		Existing Bike Rack within Landscape Island - Lacks Security and Access
14	NW 188 ST	NW 37 AVE	NW 39 ST	Missing Sod
15	NW 39 AVE	NW 188 ST	NW 191 ST	Debris Partially Blocking Access to East Sidewalk Walk
16	NW 39 AVE	NORTH	NW 188 ST	Landscape Maintenance - Trees Partially Blocking Sidewalk Access / Fence in Disrepair
17	NW 183 ST	NW 37 AVE		Restripe Crosswalk
18	NW 175 ST	NW 42 AVE		Pedestrian Crossing Sign Leaning
19	NW 42 AVE	SOUTH	NW 179 ST	Rapid Flash Beacon Lights Not Working
20	NW 183RD ST	NW 37TH AVE		Sidewalk Repair Interior South Sidewalk
21	NW 34 CT	NW 187 ST		Restripe Crosswalk
22	NW 188 ST	NW 39 AVE		Restripe Crosswalk
23	NW 189 ST	NW 34 CT	NW 33 CT	Leaning "End of School Zone" Sign Southside
24	NW 37 AVE	SOUTH	NW 187 ST	Restripe Pavement Markings
25	NW 183 TER	NW 42 AVE		Leaning "Stop" Sign
26	NW 186TH ST	SCHOOL EXIT		Stop Bar and Stop Sign Missing at School Exit
27	NW 183 ST	NW 39 AVE	NW 38 CT	North Sidewalk Repair Along Frontage Road (15 FT)
28	NW 39 AVE	NW 187 ST		Maintenance of Landscaping - Trees Partially Blocking East Sidewalk Access
29	NW 188 ST	NW 37 AVE	NW 39 AVE	North Sidewalk Repair (15 FT)
30	NW 183 ST	EAST	NW 38 CT	South Sidewalk Repair (15 FT) at the Entrance to Douglas Point
31	NW 183 ST	WEST	NW 37 AVE	North Sidewalk Repair (10 FT) at Walgreens Driveway
32	NW 37 AVE	SOUTH	NW 183 ST	West Sidewalk Repair (15 FT)
33	NW 191 ST	NW 39 AVE	NW 37 CT	South Sidewalk Repair (25 FT)
34	NW 37 AVE	SOUTH	NW 183 ST	West Sidewalk Repair (15 FT)
35	NW 191 ST	WEST	NW 37 CT	North Sidewalk Repair (10 FT)
36	NW 39 AVE	NW 187 ST	NW 188 ST	East Sidewalk Repair (5 FT)
37	NW 188 ST	NORTHWEST	NW 37 AVE	North Sidewalk Repair (30 FT)
38	NW 87 ST	NW 35 AVE	NWC	West Sidewalk Repair (30 FT)
39	NW 32 AVE	NW 188 ST	NW 189 ST	East Sidewalk Repair (15 FT) at Driveway
North Dade Middle School				
Item	Roadway	From/At	To	Details
1	NW 17 ST	NW 19 AVE		Lights Not Working
2	BUNCH PARK DR	NW 20 AVE	NW 22 AVE	Dangerous Screw jutting out in Pavement
3	BUNCH PARK DR	NW 20 AVE	NW 22 AVE	Litter on south side
4	BUNCH PARK DR	NW 20 AVE	NW 22 AVE	Debris on south side
Ruben Dario Middle School				
Item	Roadway	From/At	To	Details
1	FLAGER	W 101 AVE		School Zone Sign bent
2	FLAGER	SW 98 CT	SW 98 AVE	Speed Zone graffiti
3	NW 72 AVE @ Blue Riviera Crandon Entrance			east leg north side- flooding
Miami Northwestern Senior High School				
Item	Roadway	From/At	To	Details
1	NW 12 AVE	67 ST	71 ST	School Zone sign bent
2	NW 12 AVE	NW 71 ST	NW 74 ST	Missing sign and light cover
3	NW 12 AVE	NW 71 ST	NW 74 ST	Faded School Pavement Marking facing south



4	NW 11 AVE	67 ST	66 ST	Bent Speed Limit Sign
5	NW 67 ST	11 AVE	10 AVE	Bent Sign- facing west
6	NW 10 AVE	NW 70 ST		Bent Sign
7	NW 67 ST	8 AVE		Illegal Dumping- North Leg
Hialeah Senior High School				
Item	Roadway	From/At	To	Details
1	E 49 ST	E 3 AVE	E 4 AVE	School Zone Pavement Markings south side
2	W 41 ST	E 41 ST		Wires on ped Button SE Corner
3	E 4 AVE	E 49 ST	E 48 ST	School Pavement Markings faded
Georgia Jones-Ayers Middle School				
Item	Roadway	From/At	To	Details
1	NW 46 ST	NW 13 AVE	NW 12 PL	Repaint Crosswalk
2	NW 46 ST	NW 13 AVE		Repaint Crosswalk
3	NW 46 ST	NW 14 AVE		Repaint Crosswalk
4	NW 18 AVE	NW 46 ST	NW 45 ST	Maintenance of Landscaping - Trim Hedges
5	NW 41 ST	NW 41 ST	NW 18 AVE	Equipment Blocking Sidewalk Access
6	NW 7 AVE	NW 43 ST		Leaning "Stop" Sign
7	NW 13 AVE	NW 46 ST	NW 45 ST	East Sidewalk Repair (50 FT) / Car Blocking Sidewalk Access
8	NW 46 ST	NW 14 AVE	NW 13 PL	South Sidewalk Repair (40 FT)
9	NW 13 AVE	NW 41 ST	NW 40 ST	West Sidewalk Repair (35 FT) / Garbage Cans Blocking Sidewalk Access
10	NW 13 AVE	NW 42 ST	NW 41 ST	East Sidewalk Repair (10 FT)
11	NW 46 ST	NW 14 CT	NW 14 AVE	South Sidewalk Repair (10 FT)
12	NW 46 ST	NW 12TH AVE	NW 11 AVE	North Sidewalk Repair (5 FT)
13	NW 46 ST	NW 13TH AVE	NW 12 PL	North Sidewalk Repair (10 FT)
14	NW 46 ST	NW 13 PL	NW 13 AVE	North Sidewalk Repair (15 FT)
15	NW 46 ST	NW 14 CT	NW 14 AVE	South Sidewalk Repair (15 FT)
16	NW 46 ST	NW 12 AVE	NW 11 AVE	North Sidewalk Repair (20 FT)
17	NW 14 AVE	NW 45 ST		West Sidewalk Repair (15 FT)
18	NW 13 AVE	NW 42 ST		West Sidewalk Repair (10 FT)
19	NW 13 AVE	NW 43 ST	NW 42 ST	East Sidewalk Repair (50 FT)
20	NW 13 AVE	NW 43 ST	NW 42 ST	W Sidewalk Repair (10 FT)
21	NW 13 AVE	NW 44 ST	NW 45 ST	Maintenance of Sidewalk
22	NW 46 ST	NW 16 AVE		Repaint Crosswalk
23	NW 46 ST	NW 15 CT		East Sidewalk Repair (15 FT)
24	NW 46 ST	NW 15 AVE		North Sidewalk Repair (10 FT)
25	NW 46 ST	NW 14 AVE	NW 14 CT	North Sidewalk Repair (15 FT)
26	NW 46 ST	NW 15 AVE		Repaint Crosswalk
27	NW 46 ST	NW 14 AVE	NW 14 CT	North Sidewalk Repair (20 FT)
28	NW 46 ST	NW 12 PL	NW 13 AVE	Leaning "Adopt A Road" Sign
29	NW 46 ST	NW 11 PL	NW 11 CT	Maintenance of School Zone Sign
30	NW 14 CT	NW 46 ST		South Sidewalk Repair (10 FT)
31	NW 12 AVE	NW 46 ST	NW 47 ST	Pedestrian Crossing Sign Down
32	NW 46 ST	NW 12 PL	NW 12 AVE	Repaint School Zone Pavement Markings
33	NW 46 ST	NW 14 AVE		Maintenance of Flashing Beacon - Sign Fading
34	NW 47 TER	NW 11 AVE	NW 12 AVE	South Sidewalk Repair (25 FT)
35	NW 46 ST	NW 10 AVE		Repaint Crosswalk
36	NW 10 AVE	NW 46 ST		Landscaping Blocking "Truck Route" Sign - Trim Trees
37	NW 47 ST	NW 12 AVE	NW 11 AVE	South Sidewalk Repair (30 FT)
38	NW 16 AVE	NW 46 ST		Repaint Crosswalk
39	NW 46 ST	NW 16 AVE	NW 15 AVE	South Sidewalk Repairs (30 FT)
40	NW 46 ST	NW 16 AVE	NW 15 AVE	Landscaping Blocking "No Left Turn" Sign - Trim Trees
41	NW 14 AVE	NW 46 ST		Landscaping Maintenance of Sidewalk / Leaning Stop Sign
42	NW 46 ST	NW 15 AVE	NW 16 AVE	Maintenance of Fence - Impeding Access to Sidewalk
43	NW 43 ST	NW 14 CT		North Sidewalk Repairs (40 FT)
44	NW 46 ST	NW 19 AVE		Maintenance of Flashing Beacon - Sign Fading
45	NW 45 ST	NW 17 AVE		Cars Impeding Access to North Sidewalk
46	NW 15 AVE	NW 45 ST	NW 46 ST	Maintenance of Landscaping - Trim Hedges - Impeding West Sidewalk Access
47	NW 45 ST	NW 11 PL		Leaning Stop Sign



48	NW 44 ST	NW 13 PL		Maintenance of Sidewalk / Cars Blocking Sidewalk Access
49	NW 41 ST	NW 13 PL		Repaint Crosswalk
50	NW 13 AVE	NW 41 ST		Maintenance of Landscaping - Impeding Access to South Sidewalk
51	NW 41 ST	NW 13 AVE		North Sidewalk Repair (10 FT)
52	NW 41 ST	NW 12 PL		South Sidewalk Repair - Lift Sidewalk (15 FT)
53	NW 41 ST	NW 12 PL		Maintenance of Landscaping - Impeding Access to South Sidewalk - Trim Hedges
54	NW 41 ST	NW 12 PL		North Sidewalk Repair (20 FT)
55	NW 46 ST	NW 12 PL	NW 12 AVE	South Sidewalk Repair (60 FT)



APPENDIX B

Prioritization Tables

High School Prioritization

SCHOOL INFORMATION							DATA								RANKING CALCULATION								
Rank Final	No.	MDCPS	Name	Address	City	ZIP	Enrollment	% walk + %Bike	Student 0.5 mile	% Student 0.5 mile	Bike/Ped Crash	Juv Ped Crash	% Lunch	Nearest Street	Traffic Volume	Rank % Students H mile	Rank Bike/Ped	Rank Juv Ped	Rank Traffic	Rank Walk + Ped*	Rank Walk + Ped*	Rank Lunch	Avg Rank
1	46	7591	NORTH MIAMI SENIOR HIGH (5)	13110 NE 8 AVENUE	NORTH MIAMI	33161	2338	83.0%	366	15.7%	171	33	93.9%	NE 135th St	25000	2	24	3	22	2	2	8	9
2	31	7251	MIAMI CENTRAL SENIOR HIGH	1781 NW 95 STREET	UNINCORPORATED MIAMI-DADE	33147	1667	40.0%	143	8.6%	213	28	95.0%	NW 17th Ave	16600	11	15	9	32	11	11	5	13.42857143
3	34	7341	MIAMI JACKSON SENIOR HIGH	1751 NW 36 STREET	MIAMI	33142	1506	82.0%	317	21.0%	111	10	95.4%	NW 36th St	26000	3	42	35	19	3	3	2	15.28571429
4	30	7231	MIAMI CAROL CITY SENIOR HIGH***	3301 MIAMI GARDENS DRIVE	MIAMI GARDENS	33056	967	37.5%	118	12.2%	93	28	96.0%	NW 183rd St	29000	13	49	9	15	13	13	1	16.14285714
5	38	7411	MIAMI NORTHWESTERN SENIOR HIGH	1100 NW 71 STREET	MIAMI	33150	1482	45.0%	235	15.9%	189	19	94.9%	NW 12th Ave	12200	8	23	29	38	8	8	6	17.14285714
6	16	7111	HIALEAH SENIOR HIGH	251 EAST 47 STREET	HIALEAH	33013	2059	35.1%	245	11.9%	129	11	92.7%	E 49th St	41500	15	34	33	5	15	15	11	18.28571429
7	41	7731	MIAMI SOUTHRIDGE SENIOR HIGH	19355 SW 114 AVENUE	UNINCORPORATED MIAMI-DADE	33157	1900	25.0%	162	8.5%	224	31	92.1%	Colonial Rd	13900	20	11	4	36	20	20	18	18.42857143
8	6	7791	BOOKER T WASHINGTON SENIOR HIGH	1200 NW 6 AVENUE	MIAMI	33136	960	21.0%	185	19.3%	341	26	92.1%	NW 7th Ave	17600	23	5	14	25	23	23	17	18.57142857
9	45	7541	NORTH MIAMI BEACH SENIOR HIGH	1247 NE 167 STREET	UNINCORPORATED MIAMI-DADE	33162	1437	80.0%	195	13.6%	128	25	92.2%	NE 167th St	7000	4	35	20	50	4	4	15	18.85714286
10	17	7131	HIALEAH-MIAMI LAKES SENIOR HIGH	7977 WEST 12 AVENUE	HIALEAH	33014	1560	46.0%	248	15.9%	96	12	91.6%	W 12th Ave	27500	7	45	31	17	7	7	20	19.14285714
11	15	7191	HIALEAH GARDENS SENIOR HIGH (6)	11700 NW HIALEAH GARDENS BLVD	HIALEAH GARDENS	33018	2736	88.0%	398	14.5%	40	7	88.0%	N Okeechobee Rd	35037	1	54	47	10	1	1	22	19.42857143
12	37	7381	MIAMI NORLAND SENIOR HIGH	1050 NW 195 STREET	MIAMI GARDENS	33169	1815	36.0%	225	12.4%	147	28	92.4%	NW 12th Ave	6700	14	27	9	51	14	14	14	20.42857143
13	33	7301	MIAMI EDISON SENIOR HIGH	6161 NW 5 COURT	MIAMI	33127	711	42.0%	11	1.5%	119	21	93.7%	NW 62nd St	10600	9	39	27	43	9	9	9	20.71428571
14	21	7005	ITECH@THOMAS A. EDISON EDUCATION CENTER	6101 NW 2 AVENUE	MIAMI	33127	204	50.0%	20	9.8%	119	21	92.6%	NW 2nd Ave	4700	6	39	27	57	6	6	12	21.85714286
15	2	7011	AMERICAN SENIOR HIGH	18350 NW 67 AVENUE	UNINCORPORATED MIAMI-DADE	33015	2010	40.0%	357	17.8%	51	8	92.2%	Ludlam Rd	39500	11	53	46	7	11	11	16	22.14285714
16	29	7201	MIAMI BEACH SENIOR HIGH	2231 PRAIRIE AVENUE	MIAMI BEACH	33139	2354	20.0%	82	3.5%	467	30	70.8%	Pine Tree Dr	13300	24	1	8	37	24	24	40	22.57142857
17	18	7151	HOMESTEAD SENIOR HIGH	2351 SE 12 AVENUE	HOMESTEAD	33035	2042	11.0%	119	5.8%	199	35	95.0%	Palm Dr	9800	33	18	1	45	33	33	4	23.85714286
18	10	6081	Cutler Bay Academy of Advanced Studies	8601 SW 212 STREET	CUTLER BAY	33189	472	20.0%	33	7.0%	224	31	65.2%	SW 87th Ave	9900	24	11	4	44	24	24	43	24.85714286
19	8	7071	CORAL GABLES SENIOR HIGH	450 BIRD ROAD	CORAL GABLES	33146	3242	9.0%	57	1.8%	373	23	77.1%	SW 40th St	39500	36	2	21	7	36	36	37	25
19	24	7033	LAW ENFORCEMENT OFFICERS MEMORIAL HIGH	300 NW 2ND AVENUE	MIAMI	33128	405	10.0%	1	0.2%	341	26	92.9%	NE 3rd St	11400	35	5	14	41	35	35	10	25
21	59	7601	WILLIAM H TURNER TECHNICAL ARTS SENIOR HIGH	10151 NW 19 AVENUE	UNINCORPORATED MIAMI-DADE	33147	1382	2.0%	7	0.5%	213	28	95.4%	NW 103rd St	33500	48	15	9	13	48	48	3	26.28571429
22	43	7531	MIAMI SUNSET SENIOR HIGH	13125 SW 72 STREET	UNINCORPORATED MIAMI-DADE	33183	1288	32.0%	137	10.6%	100	7	85.5%	SW 72nd St	28500	17	43	47	16	17	17	28	26.42857143
23	39	7431	MIAMI PALMETTO SENIOR HIGH	7460 SW 118 STREET	PINECREST	33156	2771	42.0%	46	1.7%	116	14	51.3%	Palmetto Rd	9500	9	41	30	46	9	9	47	27.28571429
24	5	7008	BIOTECH @ RICHMOND HEIGHTS 9-12 HIGH SCHOOL	15015 SW 103 AVENUE	UNINCORPORATED MIAMI-DADE	33176	413	12.0%	1	0.2%	143	10	0.0%	Coral Reef Dr	35000	30	28	35	11	30	30		27.33333333
25	40	7461	MIAMI SENIOR HIGH	2450 SW 1 STREET	MIAMI	33135	2848	20.0%	403	14.2%	98	9	92.5%	W Flagler St	25000	26	44	43	22	26	26	13	28.57142857
26	13	7781	FELIX VARELA SENIOR HIGH	15255 SW 96 STREET	UNINCORPORATED MIAMI-DADE	33196	2404	74.5%	219	9.1%	63	6	80.1%	Hammocks Blvd	7100	5	52	53	49	5	5	32	28.71428571
27	3	7351	ARTHUR AND POLLY MAY'S CONSERVATORY OF THE ARTS	11700 SW 216 STREET	UNINCORPORATED MIAMI-DADE	33170	604	3.0%	33	5.5%	224	31	89.2%	SW 216th St	17000	47	11	4	29	47	47	21	29.42857143
28	53	7041	SCHOOL FOR ADVANCED STUDIES Wolfson Campus	25 NE SECOND ST ROOM 5515	MIAMI	33132	126	1.0%	2	1.6%	341	26	0.0%	SW 104th St	49000	53	5	14	1	53	53		29.83333333
29	58	7049	WESTLAND HIALEAH SENIOR HIGH	4000 WEST 18TH AVENUE	HIALEAH	33012	1624	25.0%	183	11.3%	95	6	94.1%	W 18th Ave	11200	20	47	53	42	20	20	7	29.85714286
30	7	7021	CENTER FOR INTERNATIONAL EDUCATION: A CAMBRIDGE ASSOCIATE SCHOOL	900 NE 23 AVENUE	HOMESTEAD	33033	306	2.0%	4	1.3%	199	35	84.6%	Campbell Dr	27500	48	18	1	17	48	48	30	30
31	23	7291	JOSE MARTI MAST 6-12 ACADEMY	5701 WEST 24 AVENUE	HIALEAH	33016	933	26.0%	137	14.7%	40	7	79.1%	W 28th Ave	17600	18	54	47	25	18	18	35	30.71428571
32	55	7721	SOUTH MIAMI SENIOR HIGH	6856 SW 53 STREET	UNINCORPORATED MIAMI-DADE	33155	1955	11.0%	19	1.0%	158	7	86.9%	SW 56th St	22500	33	25	47	24	33	33	25	31.42857143
33	56	7741	SOUTHWEST MIAMI SENIOR HIGH	8855 SW 50 TERRACE	UNINCORPORATED MIAMI-DADE	33165	2468	22.0%	86	3.5%	135	9	87.9%	SW 48th St	5400	22	33	43	55	22	22	24	31.57142857
34	52	7061	SCHOOL FOR ADVANCED STUDIES NO	11380 NW 27 AVE - #1111	MIAMI	33167	124	0.0%	0	0.0%	213	28	0.0%	NW 27th Ave	46000	54	15	9	4	54	54		31.66666667
35	19	7571	INTERNATIONAL STUDIES PREPARATORY ACADEMY	1570 MADRUGA AVENUE	CORAL GABLES	33146	366	7.0%	2	0.5%	373	23	49.7%	SW 57th Ave	16000	40	2	21	34	40	40	48	32.14285714
36	9	7101	CORAL REEF SENIOR HIGH	10101 SW 152 STREET	UNINCORPORATED MIAMI-DADE	33157	3422	9.0%	26	0.8%	143	10	53.8%	Coral Reef Dr	35000	36	28	35	11	36	36	45	32.42857143
36	20	7581	iPrep ACADEMY	1501 NE 2 AVENUE	MIAMI	33132	793	2.0%	47	5.9%	341	26	42.1%	Biscayne Blvd	32500	48	5	14	14	48	48	50	32.42857143
38	27	7171	Medical Academy for Science & Technology	1221 NW 1 AVENUE	HOMESTEAD	33030	731	7.0%	10	1.4%	190	22	78.4%	SW 177th Ave	16700	40	20	24	31	40	40	36	33
39	11	7081	DESIGN AND ARCHITECTURE SENIOR HIGH	4001 NE 2 AVENUE	MIAMI	33137	495	4.0%	5	1.0%	341	26	44.1%	NE 2nd Ave	12000	43	5	14	39	43	43	49	33.71428571
40	12	7141	DR MICHAEL M KROP SENIOR HIGH	1410 NE 215 STREET	UNINCORPORATED MIAMI-DADE	33179	2572	35.0%	144	5.6%	94	9	67.6%	NE 12th Ave	5300	16	48	43	56	16	16	42	33.85714286
41	32	7271	MIAMI CORAL PARK SENIOR HIGH	8865 SW 16 STREET	UNINCORPORATED MIAMI-DADE	33174	2462	9.0%	187	7.6%	153	11	87.9%	SW 16th St	7800	36	26	33	48	36	36	23	34



Middle School Prioritization

SCHOOL INFORMATION							DATA								RANKING CALCULATION								
Rank Final	No.	MDCPS	Name	Address	City	ZIP	Enrollment	% walk + %Bike	Student 0.5 mile	% Student 0.5 mile	Bike/Ped crash	Juv Ped Crash	% Lunch	Nearest Street	Traffic Volume	Rank % Students H mile	Rank Bike/Ped	Rank Juv Ped	Rank Traffic	Rank Walk + Ped*	Rank Walk + Ped*	Rank Lunch	Avg Rank
1	33	6631	NORTH MIAMI MIDDLE (1)	700 NE 137 STREET	NORTH MIAMI	33161	910	68.0%	298	32.7%	163	27	95.6%	NE 135th St	25000	3	7	3	16	3	3	19	7.714285714
2	4	6051	CAROL CITY MIDDLE (2)	3737 NW 188 STREET	MIAMI GARDENS	33055	358	60.0%	83	23.2%	66	16	97.8%	NW 37th Ave	25000	6	29	13	16	6	6	3	11.28571429
3	32	6591	NORTH DADE MIDDLE	1840 NW 157 STREET	MIAMI GARDENS	33054	487	43.0%	79	16.2%	103	15	97.5%	NW 22nd Ave	18200	10	18	15	20	10	10	6	12.71428571
4	9	6011	GEORGIA JONES-AYERS MIDDLE (3)	1331 NW 46 STREET	MIAMI	33142	422	64.0%	121	28.7%	85	11	97.6%	NW 12th Ave	14100	5	23	18	29	5	5	5	12.85714286
5	42	6121	RUBEN DARIO MIDDLE (4)	350 NW 97 AVENUE	UNINCORPORATED MIAMI-DADE	33172	580	90.1%	169	29.1%	96	6	92.3%	W Flagler St	35500	1	20	31	8	1	1	29	13
6	17	6251	HOMESTEAD MIDDLE	650 NW 2 AVENUE	HOMESTEAD	33030	601	26.0%	41	6.8%	156	19	98.7%	SW 177th Ave	16900	16	9	10	26	16	16	1	13.42857143
7	47	6281	THOMAS JEFFERSON MIDDLE	525 NW 147 STREET	UNINCORPORATED MIAMI-DADE	33168	308	56.0%	50	16.2%	63	8	97.1%	NW 7th Ave	27500	7	31	23	14	7	7	7	13.71428571
8	18	6411	HORACE MANN MIDDLE	8950 NW 2 AVENUE	EL PORTAL	33150	594	76.0%	78	13.1%	113	19	95.1%	NW 2nd Ave	4500	2	15	10	47	2	2	21	14.14285714
9	31	6571	NORLAND MIDDLE	1235 NW 192 TERRACE	MIAMI GARDENS	33169	878	68.0%	118	13.4%	78	17	96.2%	NW 12th Ave	6700	3	24	12	44	3	3	15	14.85714286
10	12	6171	HENRY H FILER MIDDLE	531 WEST 29 STREET	HIALEAH	33012	611	53.0%	131	21.4%	96	4	97.1%	Jose Marti Blvd	18700	8	20	36	19	8	8	8	15.28571429
10	16	6241	HIGHLAND OAKS MIDDLE	2375 NE 203 STREET	UNINCORPORATED MIAMI-DADE	33180	982	27.0%	88	9.0%	161	14	76.5%	Ives Dairy Rd	69000	13	8	16	2	13	13	42	15.28571429
12	5	6091	CITRUS GROVE MIDDLE	2153 NW 3 STREET	MIAMI	33125	735	31.0%	268	36.5%	98	7	97.0%	NW 22nd Ave	17200	11	19	24	23	11	11	9	15.42857143
13	3	6031	BROWNSVILLE MIDDLE	4899 NW 24 AVENUE	UNINCORPORATED MIAMI-DADE	33142	374	25.0%	84	22.5%	175	16	97.6%	NW 22nd Ave	8500	17	6	13	38	17	17	4	16
13	20	6301	JOHN F KENNEDY MIDDLE	1075 NE 167 STREET	UNINCORPORATED MIAMI-DADE	33162	1,015	50.0%	92	9.1%	120	23	94.4%	NE 167th St	7000	9	14	5	43	9	9	23	16
15	43	6841	SHENANDOAH MIDDLE	1950 SW 19 STREET	MIAMI	33145	1,299	29.0%	83	6.4%	113	7	95.9%	SW 22nd Ave	17200	12	15	24	23	12	12	17	16.42857143
16	6	6611	COUNTRY CLUB MIDDLE	18305 N.W. 75TH PLACE	UNINCORPORATED MIAMI-DADE	33015	662	27.0%	92	13.9%	47	7	94.0%	Miami Garden Dr	42500	13	36	24	5	13	13	24	18.28571429
17	27	6391	MADISON MIDDLE	3400 NW 87 STREET	UNINCORPORATED MIAMI-DADE	33147	431	10.0%	63	14.6%	153	22	97.9%	NW 32nd Ave	15800	27	11	9	28	27	27	2	18.71428571
18	34	6681	PALM SPRINGS MIDDLE	1025 WEST 56 STREET	HIALEAH	33012	928	13.0%	113	12.2%	87	10	93.7%	W 12th Ave	27000	21	22	20	15	21	21	25	20.71428571
19	22	6361	JOSE DE DIEGO MIDDLE	3100 NW FIFTH AVENUE	MIAMI	33127	879	10.5%	91	10.4%	261	23	96.7%	NW 5th Ave	4000	26	4	5	49	26	26	11	21
20	14	6751	HIALEAH GARDENS MIDDLE	11690 NW 92 AVENUE	HIALEAH GARDENS	33018	1,673	13.0%	434	25.9%	62	11	88.6%	N Okeechobee Rd	35037	21	33	18	9	21	21	31	22
20	30	6541	NAUTILUS MIDDLE**	4301 NORTH MICHIGAN AVENUE	MIAMI BEACH	33140	1,032	6.0%	55	5.3%	467	30	68.5%	W 41st St	41000	34	1	1	7	34	34	43	22
22	7	6111	CUTLER BAY MIDDLE	19400 GULFSTREAM ROAD	CUTLER BAY	33157	816	0.0%	34	4.2%	208	26	93.0%	Franjo Rd	13300	47	5	4	30			28	22.8
23	23	6331	KINLOCH PARK MIDDLE**	4340 NW 3 STREET	MIAMI	33126	700	13.0%	230	32.9%	46	1	96.7%	NW 42nd Ave	52500	21	37	46	4	21	21	12	23.14285714
24	10	6211	GLADES MIDDLE	9451 SW 64 STREET	UNINCORPORATED MIAMI-DADE	33173	825	16.0%	44	5.3%	156	10	76.7%	SW 97th Ave	9200	20	9	20	37	20	20	41	23.85714286
25	1	6023	ANDOVER MIDDLE	121 NE 207TH STREET	MIAMI GARDENS	33179	492	12.0%	55	11.2%	72	12	96.5%	NE 2nd Ave	7300	24	26	17	41	24	24	14	24.28571429
26	37	6741	PONCE DE LEON MIDDLE	5801 AUGUSTO STREET	CORAL GABLES	33146	1,238	2.0%	5	0.4%	347	23	85.6%	Miami Homestead Ave	86500	43	2	5	1	43	43	35	24.57142857
27	24	6351	LAKE STEVENS MIDDLE	18484 NW 48 PLACE	UNINCORPORATED MIAMI-DADE	33055	538	20.0%	78	14.5%	19	1	96.5%	NW 183rd St	29500	18	48	46	13	18	18	13	24.85714286
28	11	6221	HAMMOCKS MIDDLE	9889 HAMMOCKS BOULEVARD	UNINCORPORATED MIAMI-DADE	33196	681	27.0%	144	21.1%	67	6	85.1%	Hammocks Blvd	7100	13	28	31	42	13	13	37	25.28571429
29	21	6771	JORGE MAS CANOSA MIDDLE	15735 SW 144TH STREET	UNINCORPORATED MIAMI-DADE	33196	1,718	20.0%	203	11.8%	53	7	84.6%	SW 157th Ave	12700	18	34	24	32	18	18	38	26
30	39	6781	RICHMOND HEIGHTS MIDDLE	15015 SW 103 AVENUE	UNINCORPORATED MIAMI-DADE	33176	457	9.0%	53	11.6%	43	6	93.4%	Coral Reef Dr	35000	29	41	31	10	29	29	26	27.85714286
31	41	6821	ROCKWAY MIDDLE	9393 SW 29 TERRACE	UNINCORPORATED MIAMI-DADE	33165	1,156	7.0%	162	14.0%	106	7	87.5%	SW 97th Ave	13100	31	17	24	31	31	31	34	28.42857143
31	49	6961	WEST MIAMI MIDDLE	7525 SW 24 STREET	UNINCORPORATED MIAMI-DADE	33155	665	4.5%	60	9.0%	75	5	95.1%	SW 24th St	53000	39	25	34	3	39	39	20	28.42857143
33	26	6161	LAWTON CHILES MIDDLE	8190 NW 197 STREET	UNINCORPORATED MIAMI-DADE	33015	802	12.0%	151	18.8%	11	1	88.9%	NW 186th St	42500	24	49	46	5	24	24	30	28.85714286
34	48	6901	W R THOMAS MIDDLE	13001 SW 26 STREET	UNINCORPORATED MIAMI-DADE	33175	1,065	10.0%	81	7.6%	46	4	85.4%	SW 26th St	32000	28	37	36	11	28	28	36	29.14285714
35	29	6521	MIAMI SPRINGS MIDDLE	150 SOUTH ROYAL POINCIANA BOULEVARD	MIAMI SPRINGS	33166	843	6.0%	40	4.7%	141	4	95.7%	S Royal Poinciana Blvd	7700	34	13	36	39	34	34	18	29.71428571
36	38	6761	REDLAND MIDDLE	16001 SW 248 STREET	UNINCORPORATED MIAMI-DADE	33031	494	0.5%	5	1.0%	152	28	94.5%	SW 248th St	4900	46	12	2	46	46	46	22	31.42857143
37	8	6071	GEORGE WASHINGTON CARVER MIDDLE	4901 LINCOLN DRIVE	CORAL GABLES	33133	1,008	0.0%	20	2.0%	347	23	32.1%	Grand Ave	16100	47	2	5	27	47	47	49	32
38	19	6441	HOWARD D MCMILLAN MIDDLE	13100 SW 59 STREET	UNINCORPORATED MIAMI-DADE	33183	1,018	5.0%	116	11.4%	68	4	82.1%	SW 56th St	30000	38	27	36	12	38	38	39	32.57142857
39	15	6231	HIALEAH MIDDLE	6027 EAST 7 AVENUE	HIALEAH	33013	886	0.0%	75	8.5%	40	2	96.7%	E 8th Ave	17000	47	43	44	25			10	33.8
40	28	6501	MIAMI LAKES MIDDLE	6425 MIAMI LAKEWAY NORTH	MIAMI LAKES	33014	1,314	7.0%	35	2.7%	40	7	88.5%	Miami Lakeway N	4400	31	43	24	48	31	31	32	34.28571429
41	44	5003	SOUTH DADE MIDDLE	29100 SW 194TH AVENUE	UNINCORPORATED MIAMI-DADE	33030	1,274	6.0%	7	0.5%	40	3	96.1%	SW 187th Ave	7500	34	43	42	40	34	34	16	34.71428571
42	45	6881	SOUTH MIAMI MIDDLE	6750 SW 60 STREET	SOUTH MIAMI	33143	874	9.0%	38	4.3%	63	1	59.9%	Ludlam Rd	10500	29	31	46	33	29	29	47	34.85714286
43	40	6801	RIVIERA MIDDLE	10301 SW 48 STREET	UNINCORPORATED MIAMI-DADE	33165	495	7.0%	65	13.1%	44	4	87.6%	SW 48th St	5400	31	39	36	45	31	31	33	35.14285714
44	2	6021	ARVIDA MIDDLE	10900 SW 127 AVENUE	UNINCORPORATED MIAMI-DADE	33186	1,426	5.1%	62	4.3%	44	5	65.4%	SW 127th Ave	18200	37	39	34	20	37	37	45	35.57142857
45	46	6861	SOUTHWOOD MIDDLE	16301 SW 80 AVENUE	PALMETTO BAY	33157	1,323	4.0%	56	4.2%	65	9	63.8%	SW 82nd Ave	10300	40	30	22	34	40	40	46	36
46	25	6921	LAMAR LOUIS CURRY MIDDLE	15750 SW 47TH STREET	UNINCORPORATED MIAMI-DADE	33185	1,214	4.0%	77	6.3%	39	4	81.2%	SW 157th Ave	18100	40	46	36	22	40	40	40	37.71428571
47	36	6041	PAUL W BELL MIDDLE	11800 NW 2 STREET	UNINCORPORATED MIAMI-DADE	33182	424	2.0%	81	19.1%	30	2	93.1%	SW 118th Ave	19600	43	47	44	18	43	43	27	37.85714286
48	13	6001	HERBERT A AMMONS MIDDLE	17999 SW 142 AVENUE	UNINCORPORATED MIAMI-DADE	33177	1,065	1.0%	45	4.2%	53	7	66.5%	SW 147th Ave	10100	45	34	24	35	45	45	44	38.85714286
49	35	6701	PALMETTO MIDDLE	7351 SW 128 STREET	PINECREST	33156	1,020	4.0%	55	5.4%	41	3	44.1%	SW 77th Ave	9500	40	42	42	36	40	40	48	41.14285714

* Percent of students walking and biking to the school was weighted by a factor of 2 in the ranking process

** Included in previous SRTS applications

() Proximity to another school

- (1) North Miami Senior High
- (2) Carol City Elementary
- (3) Lenora Braynon Smith Elementary
- (4) Stirrup Elementary

LEGEND	
	Recommended
	Discussed
	Top 10 Rank

APPENDIX C

Safe Routes to School Applications

(final applications to be provided upon request)