



Miami-Dade Transportation Planning Organization



OVERVIEW:

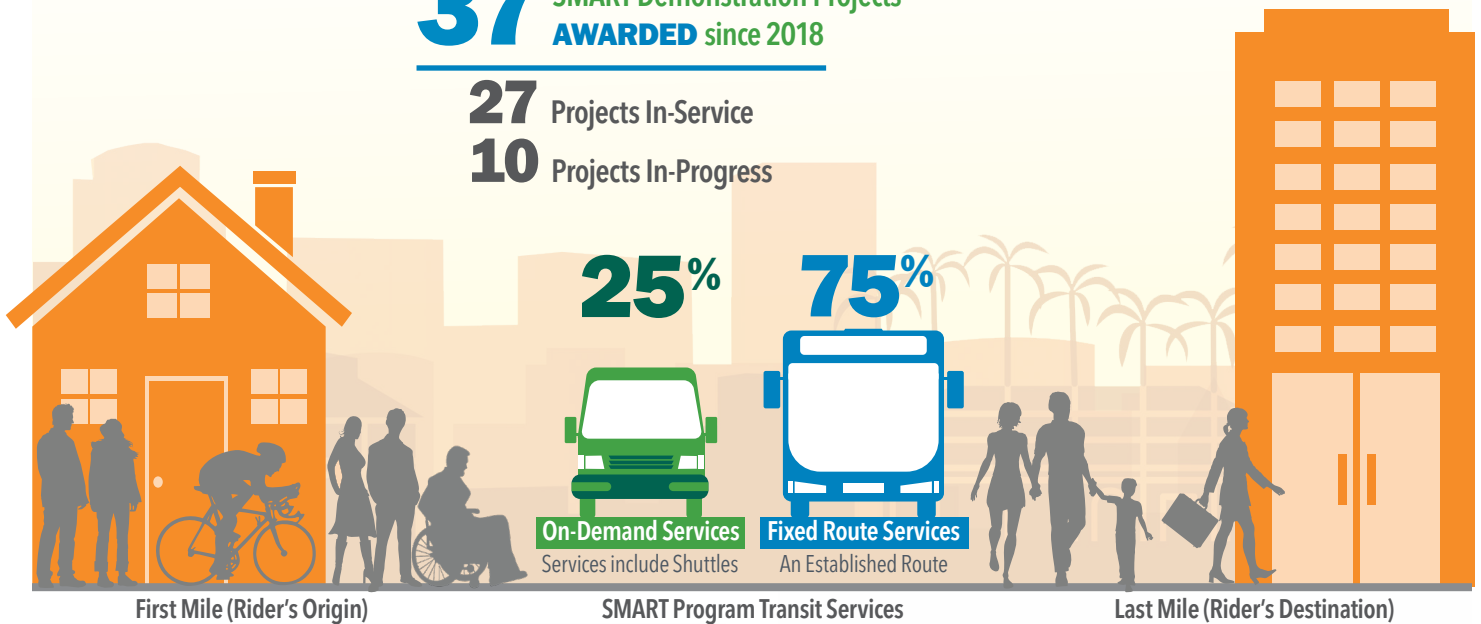
The Strategic Miami Area Rapid Transit (SMART) Program advances the implementation of six rapid transit corridors within Miami-Dade County. The Miami-Dade Transportation Planning Organization (TPO) developed the SMART Demonstration Projects to complement the SMART Program through partnerships with local transportation agencies and municipalities throughout the county. These demonstration projects focus on increasing first/ last mile connectivity to existing and future SMART Program Transit Stations, On-Demand Services and Enhanced Integration of Transit Services at county and municipal levels. This program includes a mixture of federal, state, and local funding.

QUICK FACTS:

37 SMART Demonstration Projects AWARDED since 2018

27 Projects In-Service

10 Projects In-Progress



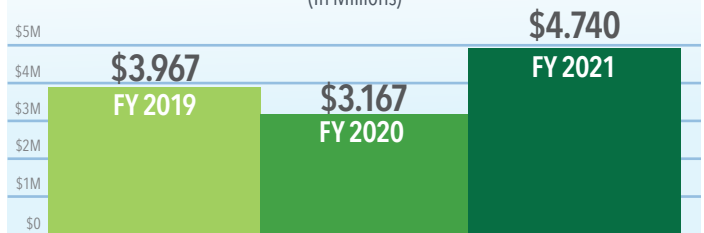
TOTAL RIDERSHIP

6.25 Million

Since program inception

ANNUAL FUNDING

(In Millions)



FY = Fiscal Year

Transportation Partners:



Scan the QR code to view more information about the SMART Program Demonstration Projects.

Miami-Dade County SMART PROGRAM

NEW SERVICE OPENINGS,
CONSTRUCTION, &
PROJECT MILESTONES

The SMART Plan

- Existing Metrorail
- Existing Tri-Rail
- Existing Rail
- Miami Intermodal Center
- SMART/BERT Hub

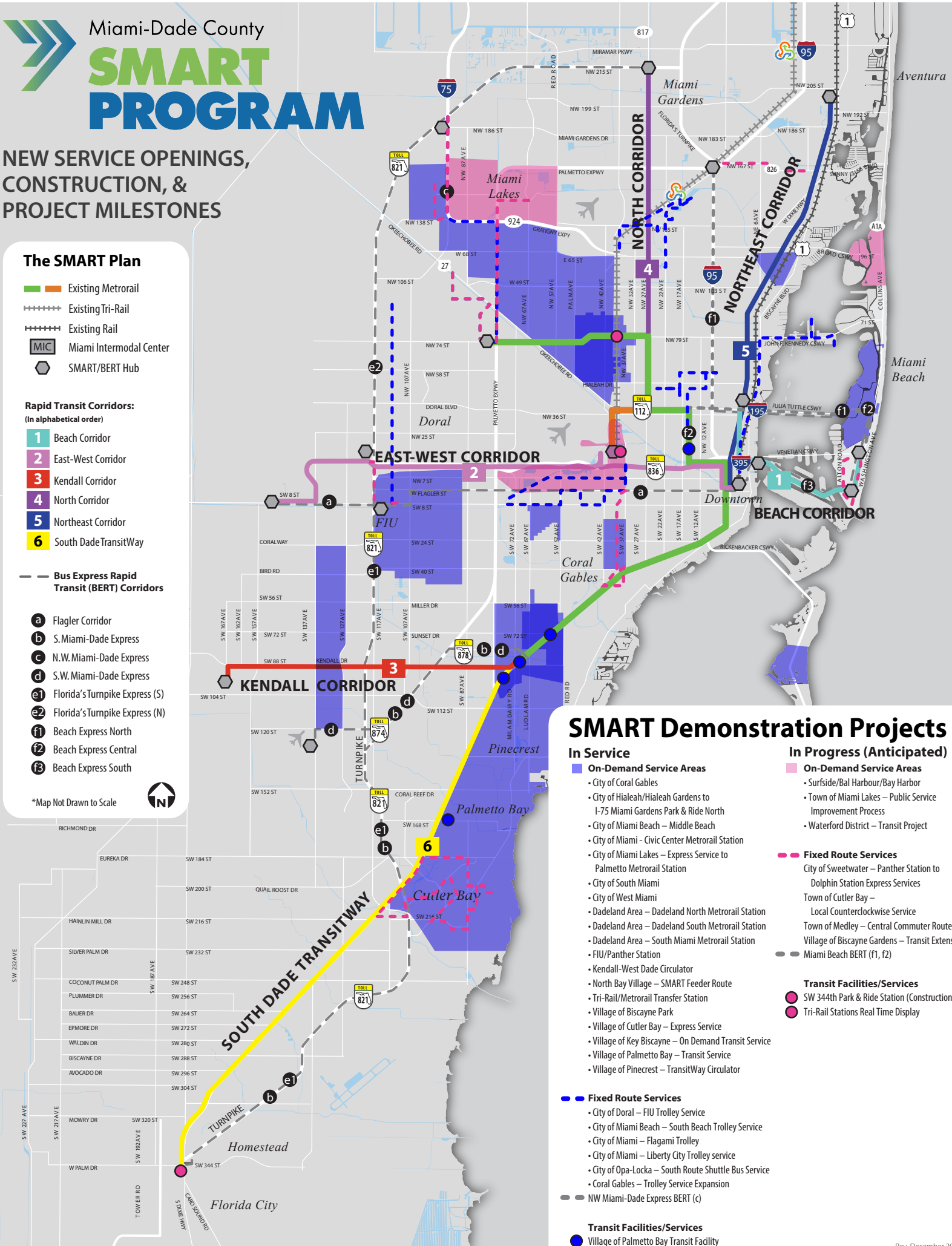
Rapid Transit Corridors: (In alphabetical order)

- 1 Beach Corridor
- 2 East-West Corridor
- 3 Kendall Corridor
- 4 North Corridor
- 5 Northeast Corridor
- 6 South Dade TransitWay

Bus Express Rapid Transit (BERT) Corridors

- a Flagler Corridor
- b S. Miami-Dade Express
- c N.W. Miami-Dade Express
- d S.W. Miami-Dade Express
- e1 Florida's Turnpike Express (S)
- e2 Florida's Turnpike Express (N)
- f1 Beach Express North
- f2 Beach Express Central
- f3 Beach Express South

*Map Not Drawn to Scale



SMART Demonstration Projects

In Service

- On-Demand Service Areas
 - City of Coral Gables
 - City of Hialeah/Hialeah Gardens to I-75 Miami Gardens Park & Ride North
 - City of Miami Beach – Middle Beach
 - City of Miami - Civic Center Metrorail Station
 - City of Miami Lakes – Express Service to Palmetto Metrorail Station
 - City of South Miami
 - City of West Miami
 - Dadeland Area – Dadeland North Metrorail Station
 - Dadeland Area – Dadeland South Metrorail Station
 - Dadeland Area – South Miami Metrorail Station
 - FIU/Panther Station
 - Kendall-West Dade Circulator
 - North Bay Village – SMART Feeder Route
 - Tri-Rail/Metrorail Transfer Station
 - Village of Biscayne Park
 - Village of Cutler Bay – Express Service
 - Village of Key Biscayne – On Demand Transit Service
 - Village of Palmetto Bay – Transit Service
 - Village of Pinecrest – TransitWay Circulator
- Fixed Route Services
 - City of Doral – FIU Trolley Service
 - City of Miami Beach – South Beach Trolley Service
 - City of Miami – Flagami Trolley
 - City of Miami – Liberty City Trolley service
 - City of Opa-Locka – South Route Shuttle Bus Service
 - Coral Gables – Trolley Service Expansion
 - NW Miami-Dade Express BERT (c)

Transit Facilities/Services

- Village of Palmetto Bay Transit Facility

In Progress (Anticipated)

- On-Demand Service Areas
 - Surfside/Bal Harbour/Bay Harbor
 - Town of Miami Lakes – Public Service Improvement Process
 - Waterford District – Transit Project
- Fixed Route Services
 - City of Sweetwater – Panther Station to Dolphin Station Express Services
 - Town of Cutler Bay – Local Counterclockwise Service
 - Town of Medley – Central Commuter Route
 - Village of Biscayne Gardens – Transit Extension
 - Miami Beach BERT (f1, f2)
- Transit Facilities/Services
 - SW 344th Park & Ride Station (Construction)
 - Tri-Rail Stations Real Time Display