

Miami-Dade County Compendium of Transportation
FACTS & TRENDS EXECUTIVE SUMMARY



Global



National



Statewide



Regional

MIAMI-DADE
Metropolitan Planning Organization

July 2014



JACOBS

PURPOSE OF THE COMPENDIUM

Miami-Dade County is at the nexus of both domestic and international economic activity. It has significant influence in the metropolitan region that bears its name, the entire state of Florida, the United States as a whole, and most of the Western Hemisphere.

Miami-Dade's location, and the transportation connections that it supports, allows it to remain a uniquely diverse and economically significant mega hub with strong indications for further growth well into the 21st Century. Indeed, this prosperity is directly linked to the efficient movement of people and goods throughout the region and beyond.

The purpose of this Compendium of Transportation Facts and Trends is to showcase the components, contributions, and importance of Miami-Dade's transportation system. In doing so, it examines how Miami-Dade interacts with and compares to other places using multimodal transportation and economic-related data.

The method for displaying this information is a web-based visualization tool that uses tables, maps, videos, and infographics to create an interactive user experience that can be expanded in the future to include more data or features.



To effectively organize and convey the content of this Compendium, the data was divided into four scales of analysis, which highlight aspects of Miami-Dade's transportation system from different geographic perspectives:

- Global Scale
- National Scale
- Statewide Scale
- Regional Scale

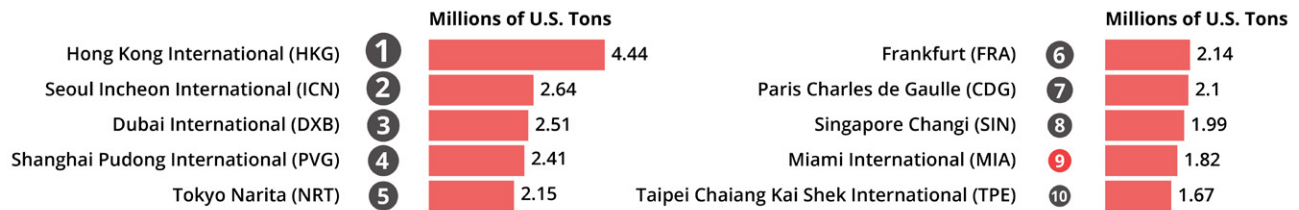
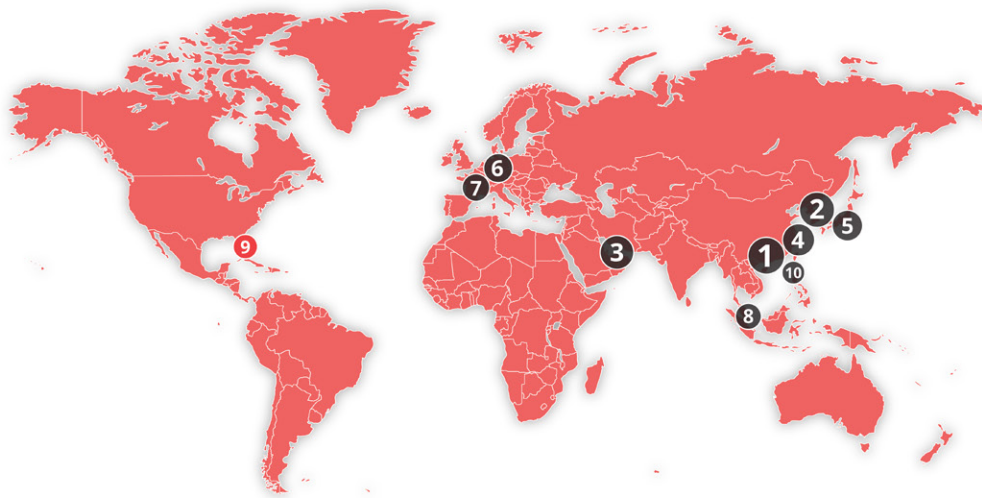


MIAMI-DADE AT THE GLOBAL SCALE

How does Miami interact with and compare to the rest of the world?

Two major economic engines call Miami-Dade home - Miami International Airport (MIA) and PortMiami. The trade and tourism these two ports contribute are significant against any standard and yet the population of 2.6 million residents in the County ranks only 50th compared to major cities across the globe.

Nearly 20 million international air passengers move through the gates at MIA each year, while PortMiami accommodates over 4 million cruise passengers. In terms of freight, these trade hubs generated nearly \$100 billion in international trade value in 2012, and both show signs of significant growth in the future.





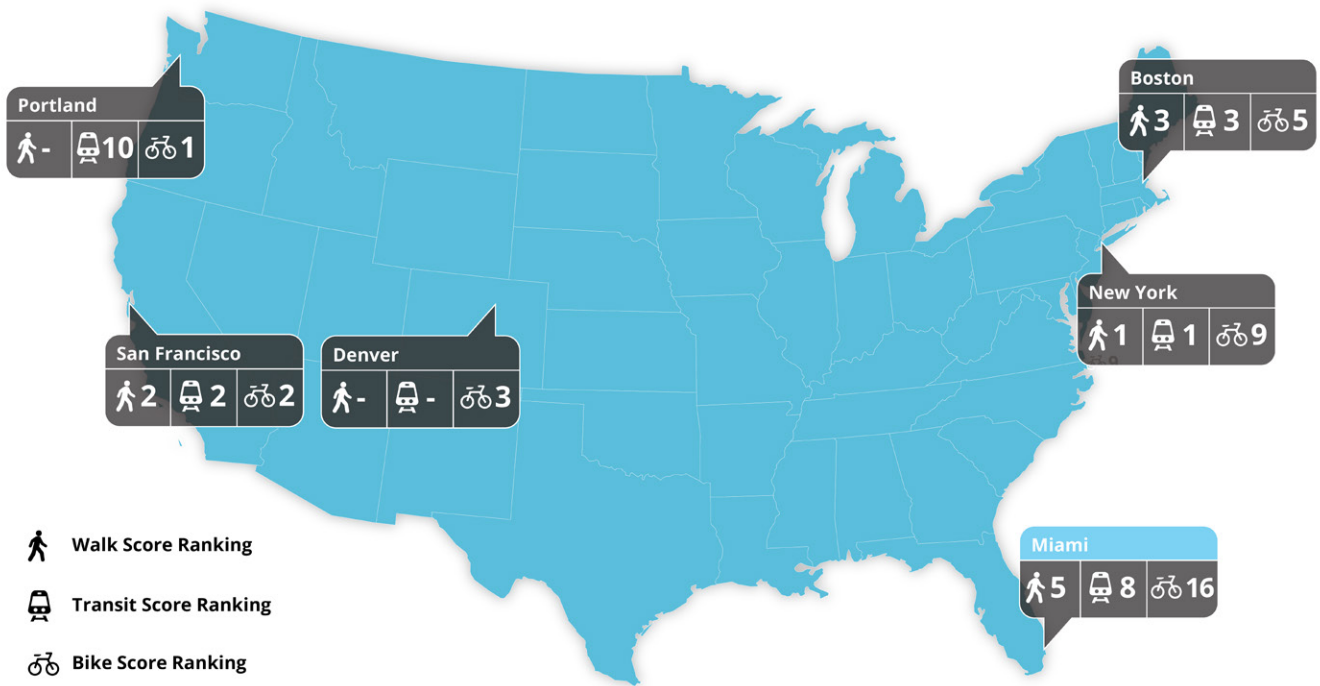
National

MIAMI-DADE AT THE NATIONAL SCALE

How does Miami interact with and compare to the rest of the United States?

When analyzing Miami-Dade at the national scale it becomes easier to make direct comparisons to other places. Measures of transit service, interstate highways, rail and truck freight, and vehicle miles traveled provide consistent measures for comparison. National movements of people and goods through MIA and PortMiami are also easily compared to other sea and airports.

In addition to having the top U.S. airport in terms of international trade and passengers, Miami-Dade also ranks highly in quality-of-life measures compared to other urban areas. The Miami metro area boasts one of the lowest vehicle miles traveled (VMT) averages in the country, and also has a higher rate of public transportation ridership than the national average.



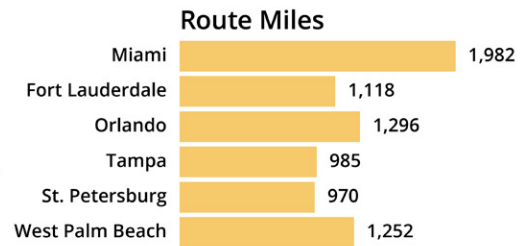
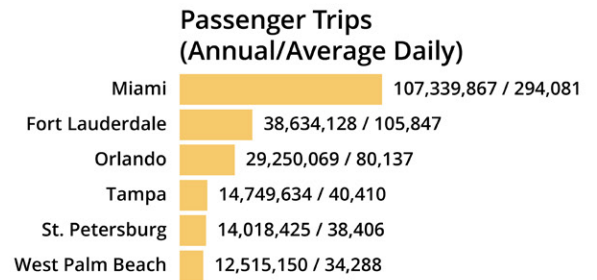
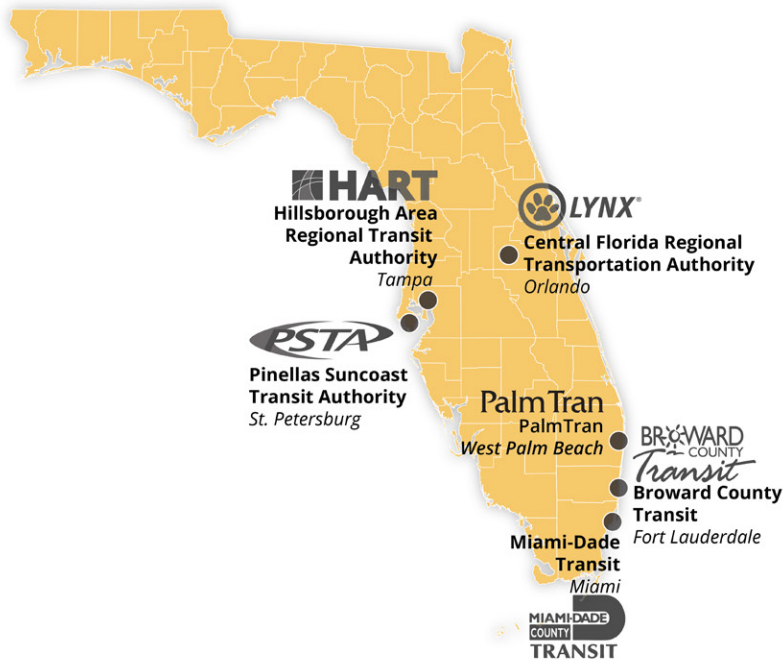


MIAMI-DADE AT THE STATEWIDE SCALE

How does Miami-Dade interact with and compare to the rest of the state of Florida?

In many ways Miami-Dade is the economic epicenter of Florida for trade and industry as a financial powerhouse, a cultural standout, and a trendsetter. Miami-Dade stands out from the other parts of Florida by most measures of size, economic contribution, and urban development.

Miami-Dade attracts nearly 70 percent of Florida’s international visitors and nearly 20 percent of its domestic visitors, who combined contribute over \$20 billion to the local economy each year. It also has the largest and most extensive roadway and transit networks in the State. Miami-Dade Transit’s (MDT) Metrorail is the only heavy rail passenger train system in the state of Florida, and its Downtown circulator, known as Metromover, is Florida’s only automated fixed guideway system.

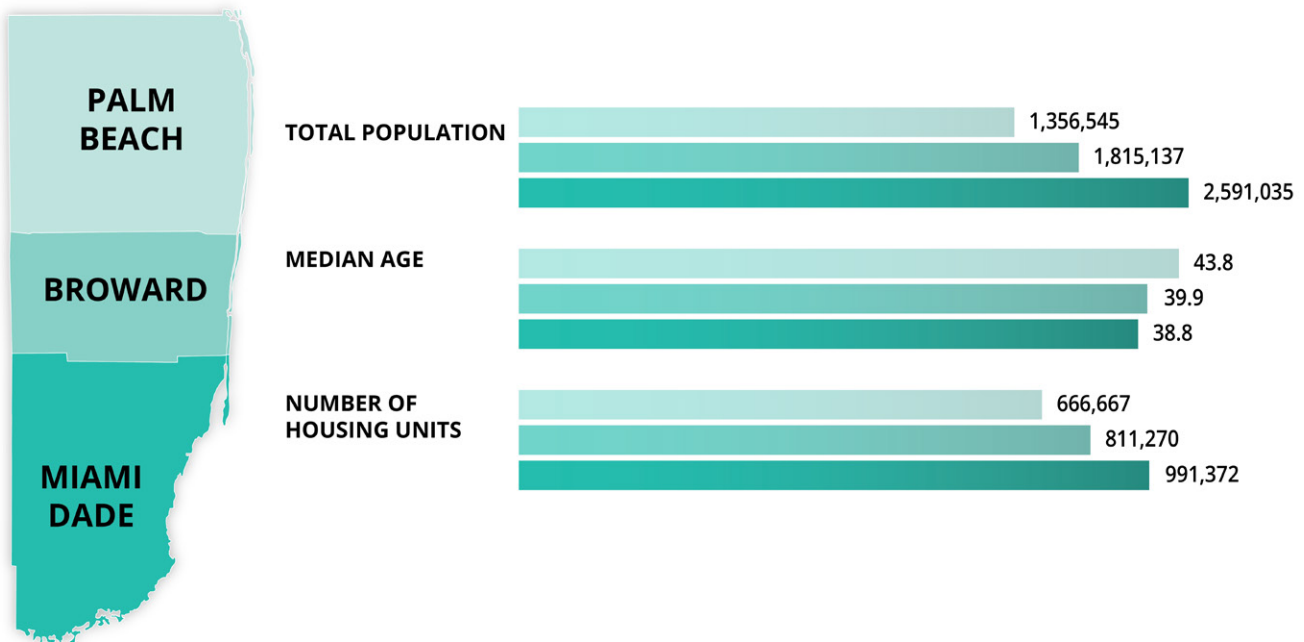


MIAMI-DADE AT THE REGIONAL SCALE

How does Miami-Dade interact with and compare to the rest of the South Florida region?

The counties in South Florida are linked geographically by sea and land transportation networks. They are also linked economically through trade and regional employment with part of Miami-Dade’s work force coming from neighboring counties. Residents and visitors alike cross county lines throughout the day for work and play with no regard for governmental boundaries.

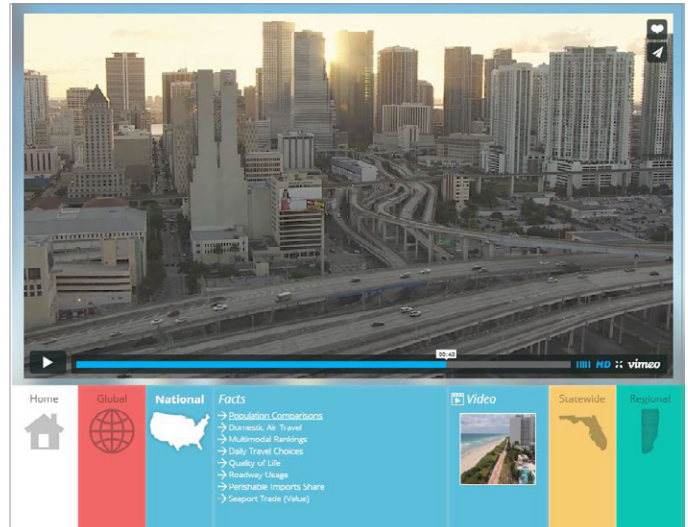
Although the counties in South Florida share many similarities, Miami-Dade stands apart with a unique and diverse culture, walkable communities, a promising real estate market, and a growing economy from a broad internationally connected business mix. In fact, Miami-Dade County has already recovered nearly all of the jobs lost during the economic recession of 2008, and is looking forward to continued employment growth and prosperity on the horizon.



VISUALIZATION TOOL

The Compendium web application offers its visitors a compelling and easy to use interface through which they can explore a wide range of media. These different methods for conveying information provide the user a visual opportunity to explore transportation data from many different sources.

It was designed for an audience with a wide range of ages and levels of technological proficiency. The information is presented with the use of rich media such as videos and infographics. This allows statistical data to become easily visualized so that meanings, comparisons, and connections become immediately apparent to the user.



RECOMMENDATIONS FOR FUTURE COMPENDIUM UPDATES

Potential data expansion opportunities outside of the data types already in the Compendium include:

- Safety data trends (crashes, fatalities, bike/ped, etc.)
- Real estate market analysis
- Measures of sprawl/density
- Environmental data (emissions, sustainability, etc.)
- Income distribution trends
- Diversity measures
- Travel time/congestion statistics

As the Compendium is expanded in the future, emphasis should be placed on the Regional scale of analysis. Data at this most detailed scale will be richer and more accurate in nature. It will also provide for more localized comparisons and spotlights on different parts of the South Florida Metro Area to further emphasize the significance of Miami-Dade County.

Opportunities for adding new functionality and visual components to the web application will become more abundant in the future as technology evolves. This will allow the visualization tool to become even more interactive and fun to use.



The Miami-Dade MPO has set a policy that assures that no person shall on the basis of race, color, national origin, sex, age, disability, family, or religious status, as provided by Title VI of the Civil Rights Act of 1964, the Civil Rights Restoration Act of 1987, and the Florida Civil Rights Act of 1992 be excluded from participation in, be denied the benefits of, or be otherwise subjected to discrimination or retaliation under any program or activity. It is the policy of Miami Dade County to comply with all of the requirements of the Americans with Disabilities Act. To request this document in accessible format please call (305) 375-1881. If you are interested in participating in the transportation planning process, please contact the Miami-Dade MPO at (305) 375-4507 or mipo@miamidade.gov, or visit www.miamidade.gov/mipo.

