

## **Florida Department of Transportation District VI**

### **"2022 Transportation Alternatives Application"**



**Submitted By: The City of Florida City**

**February 18, 2022**

**TABLE OF CONTENTS**

	<u>Page No.</u>
Section 1: Letter of Transmittal.....	2
Section 2: Project Description.....	3
Section 3: Scope of Work.....	5
Section 4: Project Implementation Plan.....	6
Section 5: Environmental Evaluation.....	7
Section 6: Right of Way Evaluation.....	8
Section 7: Opinion of Probable Cost.....	9
Section 8: Local Agency Funding Contribution.....	10
Section 9: LAP Certification Status.....	11
Section 10: Past Performance.....	12

**Section 1: Letter of Transmittal**

The letter of transmittal is attached herein.



## Office of the Mayor

February 18, 2022

Franchesca Taylor, AICP, ENV SP  
MDC Transportation Planning Organization  
150 West Flagler Street, Suite 1900  
Miami, Florida 33130

Re: Transportation Alternatives 2022 Application Cycle

Dear Ms. Taylor:

It is with great pleasure that I am able to submit the enclosed application for the transportation alternatives 2022 application cycle on behalf of the City of Florida City. The application describes the planned City Sidewalk Improvement Program to build and replace 3.1 miles of sidewalk links in the City. Florida City is one of the poorest communities in the State and suffers from an inordinate amount of discontinuous sidewalks. This hinders residents from accessing the City's Busway transit station and stops, as well as, students biking and/or walking to Florida City Elementary School.

This project, which enjoys widespread community support, solidly meets all of the grant evaluation criteria as summarized below.

- \* Improves safety and mobility in the City for bicycle riders and pedestrians, including school children.
- \* Substantially enhance access to the three (3) existing and planned Busway stations in the City which are part of the County's SMART Plan.
- \* Significantly increase mobility for disadvantaged groups such as the elderly, children and the poor. The City has one of the lowest resident auto ownership ratios and thus transit, bicycling and walking are the primary modes of transportation.
- \* The City is proposing to contribute 25% of the project cost from local funds.
- \* Quality of life will be greatly enhanced in the northwest and southwest neighborhoods including better air quality, public safety and reduced vehicle trips.

FDOT Transportation Alternatives Cycle  
February 18, 2022  
Page 2

Don't hesitate to contact Henry Iler, the City's Planner (email: [henry@ilerplanning.com](mailto:henry@ilerplanning.com)), if you have any questions regarding our application or need additional information.

Thank you,

A handwritten signature in blue ink that reads "Otis T. Wallace".

Otis T. Wallace  
Mayor

cc. Henry Iler, AICP  
Florida City Planner

## **Section 2: Project Description**

The Florida City Sidewalk Improvement Program involves the construction of approximately 3.1 miles of new sidewalks within the City's northwest (NW) and southwest (SW) neighborhoods. The map attached in this section shows these two (2) neighborhood areas. The sidewalk project is scheduled to be completed within a three (3) year timeframe. A cost estimate is provided in Section 7 by the City Engineer showing a total project cost of \$892,100.

### **Sidewalk Assessment**

In recent months, City Public Works staff have conducted a comprehensive on-the-ground assessment of the sidewalk systems in the NW and SW areas. These areas were selected because they comprise the historic City neighborhoods containing the large majority of the population. The assessment was conducted using a standard field measuring wheel and each of the 143 links measured was referenced to the nearest street address for location purposes. Many of the links have no sidewalk but some involve the replacement of substantially damaged existing sidewalks. The list of the links identified and the length of each is attached in this section in a 5-page document prepared by the City's Project Manager, Eugene Leon. It shows the length of new and replacement sidewalks in the improvement program as follows:

- \* NW Area: 1,555 linear feet
- \* SW Area: 15,100 linear feet
- Total: 16,655 linear feet

All of the public right-of-way required for this project is in place; no additional right-of-way will be needed.

### **Area Transit Stations and School**

Looking at the attached map, it identifies the NW and SW Areas, as mentioned before, and also shows the three (3) transit stations and stops along the Miami-Dade County Busway which traverses the NW Area and ends at West Palm Drive on the edge of the SW Area. In addition, the map identifies the location of Florida City Elementary School on NW 6<sup>th</sup> Avenue in the NW Area.

### **Project Meets Grant Criteria**

This project fully complies with the grant evaluation criteria of the FDOT and TPO. It will greatly improve safety in the City for bicycle riders and pedestrians of all ages. The new sidewalk connections will substantially enhance access to the three (3) Busway stations in the City which are part of the County's SMART Plan.

Florida City is one of the poorest cities in the State with a poverty rate of 40% according to the most recent Census figures. By comparison, the poverty rate in the State of Florida is 12% and Miami-Dade County 15%. A large portion of the NW Area is designated as a

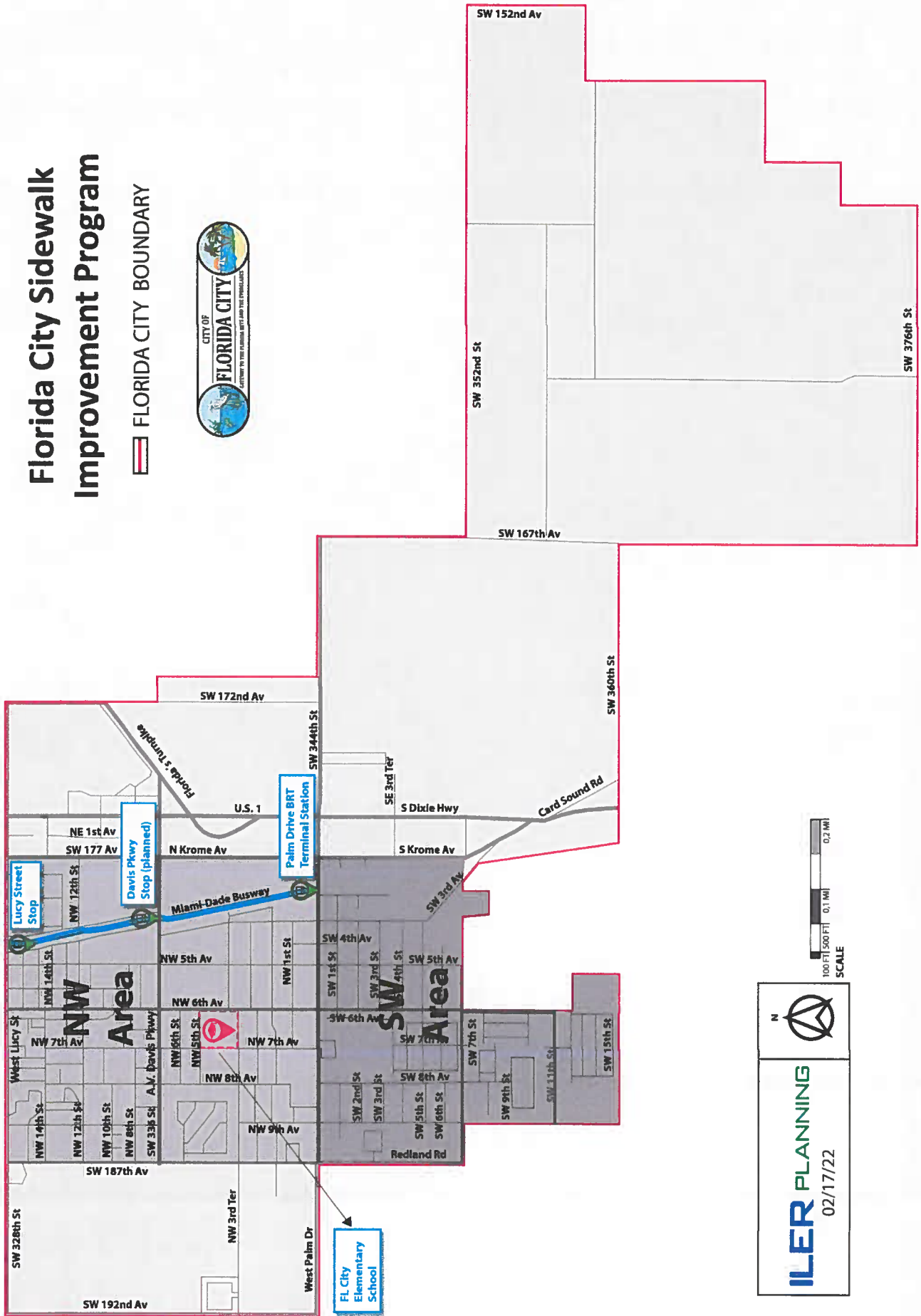
Community Development Block Grant (CDBG) area and the City's Community Redevelopment Agency (CRA) area boundary includes both the NW and SW Areas. The City also has a large number of disabled residents comprising 15% of the population. As with many poorer communities, Florida City exhibits a very low rate of resident auto ownership thus transit, bicycling and walking are very important modes of transportation. It was mentioned previously that Florida City Elementary School is located in the improvement area and it should be noted many kids attend this school from both the NW and SW Areas. These new sidewalks will significantly increase mobility and safety for disadvantaged groups such as the elderly, children and the poor.

The proposed Sidewalk Improvement Program will be greatly enhance the quality of life in the City's NW and SW neighborhoods including better air quality, public safety and reduced use of automobiles. This program has widespread community support and the full endorsement of the Florida City City Commission.

To show its commitment to this project, the City is proposing to contribute 25% of the project cost from local funds.

# Florida City Sidewalk Improvement Program

FLORIDA CITY BOUNDARY



SCALE

**ILER PLANNING**  
02/17/22



CITY OF FLORIDA CITY  
Damaged/Missing Sidewalks

15 Feb 2022

gl

Ln	Nearest Address - Location	Length
1	1060 NW 9 Ave	10 Lin Ft
2	1050 NW 9 Ave	10 Lin Ft
3	1469 NW 8 Ave	15 Lin Ft
4	409 NW 15 St	15 Lin Ft
5	545 NW 15 St	15 Lin Ft
6	562 NW 15 St	10 Lin Ft
7	589 NW 15 St	10 Lin Ft
8	578 NW 14 St	10 Lin Ft
9	590 NW 14 St	15 Lin Ft
10	523 NW 14 St	10 Lin Ft
11	533 NW 14 St	10 Lin Ft
12	645 NW 14 St	10 Lin Ft
13	691 NW 14 St	15 Lin Ft
14	500 NW 14 St	15 Lin Ft
15	475 NW 14 St	15 Lin Ft
16	305 NW 5 Ave	15 Lin Ft
17	329 NW 5 Ave	15 Lin Ft
18	1330 NW 5 Ave	10 Lin Ft
19	1312 NW 5 Ave	15 Lin Ft
20	1305 NW 5 Ave	10 Lin Ft
21	1421 NW 5 Ave	10 Lin Ft
22	1413 NW 5 Ave	10 Lin Ft
23	1513 NW 5 Ave	15 Lin Ft
24	650 NW 5 Ave	15 Lin Ft
25	1622 NW 5 Ave	5 Lin Ft
26	1514 NW 5 Ave	15 Lin Ft
27	650 NW 5 Ave	15 Lin Ft
28	521 NW 16 St	10 Lin Ft
29	539 NW 16 St	10 Lin Ft
30	538 NW 16 St	5 Lin Ft
31	441 NW 16 St	10 Lin Ft

32	450 NW 16 St	10 Lin Ft
33	950 NW 16 St	10 Lin Ft
34	440 NW 16 St	10 Lin Ft
35	421 Lucy St	10 Lin Ft
36	545 Lucy St	55 Lin Ft
37	221 NW 3 Ave	15 Lin Ft
38	241 NW 3 Ave	10 Lin Ft
39	NW 3 Ave bet 2/3 St	375 Lin Ft
40	410 NW 15 St	5 Lin Ft
41	409 NW 15 St	5 Lin Ft
42	432 NW 15 St	5 Lin Ft
43	440 NW 15 St	5 Lin Ft
44	406 NW 14 St	10 Lin Ft
45	729 NW 12 St	15 Lin Ft
46	225 NW 12 St	5 Lin Ft
47	570 NW 12 St	10 Lin Ft
48	1055 NW 6 Ave	20 Lin Ft
49	746 NW 7 Ct	10 Lin Ft
50	715 NW 8 Ave	10 Lin Ft
51	706 NW 8 Ave	75 Lin Ft
52	336 NW 8 Ave	10 Lin Ft
53	426 NW 8 Ave	5 Lin Ft
54	715 NW 10 St	10 Lin Ft
55	705 NW 9 Ave	50 Lin Ft
56	745 NW 9 Ave	15 Lin Ft
57	426 NW 9 Pl	15 Lin Ft
58	706 NW 8 Ct	45 Lin Ft
59	705 NW 8 Ct	65 Lin Ft
60	916 NW 8 St	25 Lin Ft
61	950 NW 8 St	40 Lin Ft
62	937 NW 10 St	30 Lin Ft
63	923 NW 10 St	5 Lin Ft
64	853 NW 3 St	10 Lin Ft
65	390 NW 3 St	25 Lin Ft

66	373 NW 3 St	45 Lin Ft
67	352 NW 3 St	10 Lin Ft
68	780 NW 5 St	10 Lin Ft
69	445 NW 9 Pl	20 Lin Ft
70	906 NW 4 Ter	35 Lin Ft
71	906 NW 4 La	15 Lin Ft
72	763 Davis Pkwy	15 Lin Ft
73	865 Davis Pkwy	<u>15 Lin Ft</u>
74	Sub-Total Lin Ft NW (a)	1555 Lin Ft
75		
76	537 SW 2 St	15 Lin Ft
77	302 SW 3 St	15 Lin Ft
78	304 SW 3 St	5 Lin Ft
79	310 SW 3 St	15 Lin Ft
80	305 SW 3 St	10 Lin Ft
81	327 SW 3 St	10 Lin Ft
82	328 SW 3 St	5 Lin Ft
83	336 SW 3 St	15 Lin Ft
84	344 SW 3 St	10 Lin Ft
85	353 SW 3 St	5 Lin Ft
86	639 SW 3 St	15 Lin Ft
87	409 SW 3 St	30 Lin Ft
88	569 SW 3 St	5 Lin Ft
89	577 SW 3 St	10 Lin Ft
90	305 SW 5 Ave	70 Lin Ft
91	348 SW 5 Ave	25 Lin Ft
92	130 SW 5 Ave	30 Lin Ft
93	146 SW 5 Ave	45 Lin Ft
94	220 SW 5 Ave	15 Lin Ft
95	305 SW 5 Ave	10 Lin Ft
96	421 SW 5 Ave	50 Lin Ft
97	505 SW 5 Ave	15 Lin Ft
98	529 SW 5 Av	15 Lin Ft
99	535 SW 5 Ave	35 Lin Ft

100	540 SW 5 Ave	20 Lin Ft
101	545 SW 5 Ave	10 Lin Ft
102	305 SW 6 Ave	35 Lin Ft
103	546 SW 6 Ave	20 Lin Ft
104	687 SW 7 Ave	15 Lin Ft
105	240 SW 8 Ave	20 Lin Ft
106	545 SW 5 St	10 Lin Ft
107	546 SW 5 St	10 Lin Ft
108	565 SW 5 St	5 Lin Ft
109	577 SW 5 St	15 Lin Ft
110	615 SW 5 St	50 Lin Ft
111	625 SW 5 St	35 Lin Ft
112	675 SW 5 St	15 Lin Ft
113	726 SW 5 St	15 Lin Ft
114	723 SW 5 St	15 Lin Ft
115	680 SW 7 St	10 Lin Ft
116	530 SW 7 St	15 Lin Ft
117	720 SW 7 St	10 Lin Ft
118	570 SW 6 St	10 Lin Ft
119	578 SW 6 St	15 Lin Ft
120	445 SW 3 Ave	20 Lin Ft
121	687 SW 6 Ter	15 Lin Ft
122	332 SW 3 Ave	15 Lin Ft
123	639 SW 3 Ter	15 Lin Ft
124	787 SW 3 Ter	10 Lin Ft
125	435 SW 6 Ct	10 Lin Ft
126	615 SW 8 Ave	15 Lin Ft
127	515 SW 8 Ave	15 Lin Ft
128	305 SW 8 Ave	10 Lin Ft
129	SW 2 St bet 884/9 Ave	125 Lin Ft
130	SW 9 Ave bet 4 Terr/5 St	340 Lin Ft
131	SW 5 St bet 9 Ave/872	150 Lin Ft
132	SW 8 Ave bet 5 St/425	280 Lin Ft
133	SW 7 St bet 8 Ave/7 Ave	550 Lin Ft

134	SW 7 Ave bet 6 Terr/7 St	150 Lin Ft
135	SW 6 Terr bet 7 Ave/758	250 Lin Ft
136	SW 7 Ct bet 556/5Terr	575 Lin Ft
137	SW 7 Ct bet 5 St/4 St	580 Lin Ft
138	SW 5 St bet 7 Ct/8 Ave	460 Lin Ft
139	SW 7 Ct bet 5 St/406	150 Lin Ft
140	SW 7 Ave bet 3 Terr/5 St	550 Lin Ft
141	SW 7 Ave bet 5 St/5 Terr	475 Lin Ft
142	SW 5 Terr bet 7 Ave 7 Ct	150 Lin Ft
143	SW 4 St bet 5 Ave/3 Ave	1250 Lin Ft
144	SW 3 Ave bet 1 St/3 St	2150 Lin Ft
145	Krome Ave bet SW 9 St/336 St	<u>5280 Lin Ft</u>
146	Sub-Total Lin Ft SW (b)	15100 Lin Ft
147		
148	Total Lin Ft Sidewalks (a+b)	16655 Lin Ft
149		

150 Note 1: all sidewalks are 5 Ft wide

151 Note 2: all sidewalks were measured with a 12"

152 wheel Lufkin HI-Viz WW38

153 Note 3: Prepared by Eugene Leon, City Project Manager

### **Section 3: Scope of Work**

This project will be managed by the City's Project Manager, Gene Leon, with assistance from the City's Engineer, Pedro Gonzalez. As shown in Section 10, the City has solid experience in managing sidewalk improvements and thus the design plans for standard sidewalk construction are already completed and tested on prior projects. The proposed scope of work is provided below.

#### **Task 1: Grant Agreement**

City staff will work with the FDOT and TPO to finalize and execute the grant agreement, and designate the FDOT Grant Coordinator for the project

#### **Task 2: Contractor Selection**

The City will advertise the project for contractor selection consistent with State purchasing procedures for services. The Mayor, City Engineer and Project Manager will form the selection committee.

#### **Task 3: Building Permits**

The contractor selected will obtain a general building permit for groups of related sidewalk links in coordination with the City's Building Official.

#### **Task 4: Construction**

The contractor will mobilize the necessary equipment and personnel to start and sustain construction through the project period. This task is expected to last for a major portion of the grant period.

#### **Task 5: Inspections**

City building inspectors will inspect and approve each sidewalk link when completed. The City Engineer will also perform periodic inspections of completed portions of the project.

#### **Task 6: Project Completion**

When all sidewalk links completed, the City Engineer will perform an overall final inspection and issue a report. The report will be forwarded to the Grant Coordinator for review and approval. Once approval is obtained, the grant will be closed out.

## Section 4: Project Implementation Plan

### Schedule

The project schedule is provided below.

<u>Task</u>	<u>Completion (from NTP*)</u>
1. Grant Agreement	60 days
2. Contractor Selection	180 days
3. Building Permits	180 to 1,035 days
4. Construction	240 to 1,035 days
5. Inspection	300 to 1,035 days
6. Project Completion	1,035 to 1,095 days

\* Notice-to-Proceed.

### Project Permits

The contractor will be responsible for obtaining project permits for each sidewalk link. In most cases, this will only involve the City's Building Division. However, the sidewalks on Krome Avenue (SW 177<sup>th</sup> Avenue) will require approval from Miami-Dade County.

**Section 5: Environmental Evaluation**

City staff has conducted an environmental assessment of the proposed sidewalk links and found no wetland, native habitat or other environmental issues.



## **Section 6: Right of Way Evaluation**

As discussed previously, necessary public right-of way under the construction of the 143 sidewalk links is already in place. No additional right-of-way will be needed.

**Section 7: Opinion of Probable Cost**

An opinion of probable cost, prepared by the City Engineer is attached in this section.

**CONSTRUCTION COST ESTIMATE SIDEWALK IMPROVEMENTS FLORIDA CITY**

Sidewalk Location	Length, FT	Unit Price, \$/FT	Sub-Total Cost
<b>NW Area</b>			
1060 NW 9 AVE	10	\$55.00	\$550
1050 NW 9 AVE	10	\$55.00	\$550
1469 NW 8 AVE	15	\$55.00	\$825
409 NW 15 ST	15	\$55.00	\$825
545 NW 15 ST	15	\$55.00	\$825
562 NW 15 ST	10	\$55.00	\$550
589 NW 15 ST	10	\$55.00	\$550
578 NW 14 ST	10	\$55.00	\$550
590 NW 14 ST	15	\$55.00	\$825
523 NW 14 ST	10	\$55.00	\$550
533 NW 14 ST	10	\$55.00	\$550
645 NW 14 ST	10	\$55.00	\$550
691 NW 14 ST	15	\$55.00	\$825
500 NW 14 ST	15	\$55.00	\$825
475 NW 14 ST	15	\$55.00	\$825
305 NW 5 AVE	15	\$55.00	\$825
329 NW 5 AVE	15	\$55.00	\$825
1330 NW 5 AVE	10	\$55.00	\$550
1312 NW 5 AVE	15	\$55.00	\$825
1305 NW 5 AVE	10	\$55.00	\$550
1421 NW 5 AVE	10	\$55.00	\$550
1413 NW 5 AVE	10	\$55.00	\$550
1513 NW 5 AVE	15	\$55.00	\$825
650 NW 5 AVE	15	\$55.00	\$825
1622 NW 5 AVE	5	\$55.00	\$275
1514 NW 5 AVE	15	\$55.00	\$825
650 NW 5 AVE	15	\$55.00	\$825

**CONSTRUCTION COST ESTIMATE SIDEWALK IMPROVEMENTS FLORIDA CITY**

Sidewalk Location	Length, FT	Unit Price, \$/FT	Sub-Total Cost
521 NW 16 ST	10	\$55.00	\$550
539 NW 16 ST	10	\$55.00	\$550
538 NW 16 ST	5	\$55.00	\$275
441 NW 16 ST	10	\$55.00	\$550
450 NW 16 ST	10	\$55.00	\$550
950 NW 16 ST	10	\$55.00	\$550
440 NW 16 ST	10	\$55.00	\$550
421 LUCY ST	10	\$55.00	\$550
545 LUCY ST	55	\$55.00	\$3,025
221 NW 3 AVE	15	\$55.00	\$825
241 NW 3 AVE	10	\$55.00	\$550
410 NW 15 ST	5	\$55.00	\$275
409 NW 15 ST	5	\$55.00	\$275
432 NW 15 ST	5	\$55.00	\$275
440 NW 15 ST	5	\$55.00	\$275
406 NW 14 ST	10	\$55.00	\$550
729 NW 12 ST	15	\$55.00	\$825
225 NW 12 ST	5	\$55.00	\$275
570 NW 12 ST	10	\$55.00	\$550
1055 NW 6 AVE	20	\$55.00	\$1,100
746 NW 7 CT	10	\$55.00	\$550
715 NW 8 AVE	10	\$55.00	\$550
706 NW 8 AVE	75	\$55.00	\$4,125
336 NW 8 AVE	10	\$55.00	\$550
426 NW 8 AVE	5	\$55.00	\$275
715 NW 10 ST	10	\$55.00	\$550
705 NW 9 AVE	50	\$55.00	\$2,750
745 NW 9 AVE	15	\$55.00	\$825

**CONSTRUCTION COST ESTIMATE SIDEWALK IMPROVEMENTS FLORIDA CITY**

Sidewalk Location	Length, FT	Unit Price, \$/FT	Sub-Total Cost
426 NW 9 PL	15	\$55.00	\$825
706 NW 8 CT	45	\$55.00	\$2,475
705 NW 8 CT	65	\$55.00	\$3,575
916 NW 8 ST	25	\$55.00	\$1,375
950 NW 8 ST	40	\$55.00	\$2,200
937 NW 10 ST	30	\$55.00	\$1,650
923 NW 10 ST	5	\$55.00	\$275
853 NW 3 ST	10	\$55.00	\$550
390 NW 3 ST	25	\$55.00	\$1,375
373 NW 3 ST	45	\$55.00	\$2,475
352 NW 3 ST	10	\$55.00	\$550
780 NW 5 ST	10	\$55.00	\$550
445 NW 9 PL	20	\$55.00	\$1,100
906 NW 4 TER	35	\$55.00	\$1,925
906 NW 4 LA	15	\$55.00	\$825
763 DAVIS PKWY	15	\$55.00	\$825
NW 3 AVE BET 2/3 ST	375	\$55.00	\$20,625
865 DAVIS PKWY	15	\$55.00	\$825
<b>Total NW Area</b>	<b>1,555</b>		<b>\$85,525</b>

**CONSTRUCTION COST ESTIMATE SIDEWALK IMPROVEMENTS FLORIDA CITY**

Sidewalk Location	Length, FT	Unit Price, \$/FT	Sub-Total Cost
<b>SW Area</b>			
537 SW 2 ST	15	\$55.00	\$825.00
302 SW 3 ST	15	\$55.00	\$825.00
304 SW 3 ST	5	\$55.00	\$275.00
310 SW 3 ST	15	\$55.00	\$825.00
305 SW 3 ST	10	\$55.00	\$550.00
327 SW 3 ST	10	\$55.00	\$550.00
328 SW 3 ST	5	\$55.00	\$275.00
336 SW 3 ST	15	\$55.00	\$825.00
344 SW 3 ST	10	\$55.00	\$550.00
353 SW 3 ST	5	\$55.00	\$275.00
639 SW 3 ST	15	\$55.00	\$825.00
409 SW 3 ST	30	\$55.00	\$1,650.00
569 SW 3 ST	5	\$55.00	\$275.00
577 SW 3 ST	10	\$55.00	\$550.00
305 SW 5 AVE	70	\$55.00	\$3,850.00
348 SW 5 AVE	25	\$55.00	\$1,375.00
130 SW 5 AVE	30	\$55.00	\$1,650.00
146 SW 5 AVE	45	\$55.00	\$2,475.00
220 SW 5 AVE	15	\$55.00	\$825.00
305 SW 5 AVE	10	\$55.00	\$550.00
421 SW 5 AVE	50	\$55.00	\$2,750.00
505 SW 5 AVE	15	\$55.00	\$825.00
529 SW 5 AVE	15	\$55.00	\$825.00
535 SW 5 AVE	35	\$55.00	\$1,925.00
540 SW 5 AVE	20	\$55.00	\$1,100.00
545 SW 5 AVE	10	\$55.00	\$550.00
305 SW 6 AVE	35	\$55.00	\$1,925.00

**CONSTRUCTION COST ESTIMATE SIDEWALK IMPROVEMENTS FLORIDA CITY**

Sidewalk Location	Length, FT	Unit Price, \$/FT	Sub-Total Cost
546 SW 6 AVE	20	\$55.00	\$1,100.00
687 SW 7 AVE	15	\$55.00	\$825.00
240 SW 8 AVE	20	\$55.00	\$1,100.00
545 SW 5 ST	10	\$55.00	\$550.00
546 SW 5 ST	10	\$55.00	\$550.00
565 SW 5 ST	5	\$55.00	\$275.00
577 SW 5 ST	15	\$55.00	\$825.00
615 SW 5 ST	50	\$55.00	\$2,750.00
625 SW 5 ST	35	\$55.00	\$1,925.00
675 SW 5 ST	15	\$55.00	\$825.00
726 SW 5 ST	15	\$55.00	\$825.00
723 SW 5 ST	15	\$55.00	\$825.00
680 SW 7 ST	10	\$55.00	\$550.00
530 SW 7 ST	15	\$55.00	\$825.00
720 SW 7 ST	10	\$55.00	\$550.00
570 SW 6 ST	10	\$55.00	\$550.00
578 SW 6 ST	15	\$55.00	\$825.00
445 SW 3 AVE	20	\$55.00	\$1,100.00
687 SW 6 TER	15	\$55.00	\$825.00
332 SW 3 AVE	15	\$55.00	\$825.00
639 SW 3 TER	15	\$55.00	\$825.00
787 SW 3 TER	10	\$55.00	\$550.00
435 SW 6 CT	10	\$55.00	\$550.00
615 SW 8 AVE	15	\$55.00	\$825.00
515 SW 8 AVE	15	\$55.00	\$825.00
305 SW 8 AVE	10	\$55.00	\$550.00
SW 2 ST BET 884/9 AVE	125	\$55.00	\$6,875.00
SW 9 AVE BET 4 TER/5 ST	340	\$55.00	\$18,700.00

<b>CONSTRUCTION COST ESTIMATE SIDEWALK IMPROVEMENTS FLORIDA CITY</b>			
<b>Sidewalk Location</b>	<b>Length, FT</b>	<b>Unit Price, \$/FT</b>	<b>Sub-Total Cost</b>
SW 5 ST BET 9 AVE/872	150	\$55.00	\$8,250.00
SW 8 SVE BET 5 ST/425	280	\$55.00	\$15,400.00
SW 7 ST BET 8 AVE/7 AVE	550	\$55.00	\$30,250.00
SW 7 AVE BET 6 TERR/7 ST	150	\$55.00	\$8,250.00
SW 7 AVE BET 5 TERR/6 TERR	250	\$55.00	\$13,750.00
SW 6 TERR BET 7 AVE/758	250	\$55.00	\$13,750.00
SW 7 CT BET 556 TERR/5 TERR	575	\$55.00	\$31,625.00
SW 7 CT BET 5 ST/4 ST	580	\$55.00	\$31,900.00
SW 5 ST BET 7 CT/8 AVE	460	\$55.00	\$25,300.00
SW 7 CT BET 5 ST/406	150	\$55.00	\$8,250.00
SW 7 AVE BET 3 TERR/5 ST	550	\$55.00	\$30,250.00
SW 7 AVE BET 5 ST/5 TERR	475	\$55.00	\$26,125.00
SW 5 TERR BET 7 AVE 7 CT	150	\$55.00	\$8,250.00
SW 4 ST BET 5 AVE/3 AVE	1250	\$55.00	\$68,750.00
SW 3 AVE BET 1 ST/3 ST	2150	\$55.00	\$118,250.00
KROME AVE BET SW 9 ST/336 ST	5280	\$55.00	\$290,400.00
<b>Totals SW Area</b>	<b>14,665</b>		<b>\$806,575.00</b>
<b>Total Cost Sidewalk Improvements</b>			<b>\$892,100.00</b>
<b>Notes:</b>			
1. Includes the price for sidewalk construction/restoration in the public right of way of Florida City.			
2. The unit price for sidewalk improvements used for this estimate corresponds to the most recent unit price for bond estimates of subdivision improvements in Florida City.			
I, Pedro Delfin Gonzalez, P.E., City Engineer of Florida City certify to the best of my knowledge that the costs presented above are accurate for construction estimation purposes.			

**Pedro D. Gonzalez, P.E.**  
 Digitally signed by Pedro D. Gonzalez, P.E.  
 DN: cn=Pedro D. Gonzalez, P.E., o=Baljet Environmental, Inc., ou, email=pgonzalez@baljet.com, c=US  
 Date: 2022.02.17 13:21:49 -05'00'



**Section 8: Local Agency Funding Contribution**

The City proposes to contribute 25% of the total project cost from local funds. This would total \$223,025.

**Section 9: LAP Certification Status**

The City will be the project sponsor and will enter into a Local Agency Program (LAP) Agreement with FDOT if selected, prior to the initiation of the scope of work.

## **Section 10: Past Performance**

### **Procurement**

The City has long and successful experience in procuring services for a wide-range of municipal projects. Attached in this section is a list of the 18 sidewalk projects completed since 2018, totaling 11,721 linear feet.

### **Project Management**

The Public Works Department has worked hand-in-hand with City Administration and Building Division to complete the 18 sidewalk projects listed herein and many other City construction projects. This includes effective management of the contractor and on-site work, and processing of valid change orders. Construction management is coordinated by the City's Project Manager and City Engineer.

### **Invoicing**

The City processes and approves all contractor invoices for work completed, checking the quality and extent of work done in the field, and the personnel hours and quantities shown on each invoice. Approved invoices are paid within 30 days. Invoices will also be sent to the FDOT Grant Coordinator.

City of Florida City  
Sidewalk Improvements

16 Feb 2022

91

Ln	Contractor's Name	Location	Qty-LinFt	Amount \$	Completion Date
1	HG Construction	NW 5 Ave/Roberts Park	1129	\$ 21,713.00	Dec 2021
2	Roadway Construction	East Plm Dr-SW 344 St	3596	\$ 72,723.00	Jul 2021
3	Maggolc Inc	NW 1 and 2 St frm NW			
4		e Ave to NW 7 Ave	968	\$ 22,924.00	Sep2019
5	Weekley Asphalt Paving	SW 1 St from SW 2 Ave			
7		to SW 3 Ave/NW 3 Ave			
8		, NW 4 Sve & NW 6 Ave	3004	\$ 21,683.00	Apr 2018
9	Tequesta Const Services	SW 7 St at 5,6,7 Ave	265	\$ 8,625.00	Oct 2020
10	Tequesta Const Services	SW 5 Ave/5 St	849	\$ 16,520.00	Sep 2020
11	Tequesta Const Services	NW 6 Ave/1 St	36	\$ 1,950.00	Dec 2020
12	Coast to Coast Concrete	NW 8 Ave/14 St	37	\$ 2,200.00	Feb 2021
13	Tequesta Const Services	NW 9 St/3 La	50	\$ 2,875.00	Mar 2021
14	Tequesta Const Services	SW 4 Ave/1 St	35	\$ 1,875.00	Mar 2021
15	Coast to Coast Concrete	SW 6 Ave/7St	60	\$ 4,500.00	Apr 2021
16	Tequesta Const Services	SW 6 St/3 Ave	85	\$ 3,294.00	Mar 2021
17	Coast to Coast Concrete	NW 6 Ave/Davis Pkwy	400	\$ 9,000.00	Jul 2021
18	Tequesta Const Services	NW 7 Ave/3 St	950	\$ 7,125.00	Jul 2021
19	Tequesta Const Services	NW 7 Ave/3 Terr	72	\$ 3,425.00	Jul 2021
20	Tequesta Const Services	715-775 NW Terr	105	\$ 7,140.00	Nov 2021
21	Tequesta Const Services	SW 8 St/6 Ave	80	\$ 4,680.00	Jan 2022
22					
23					
24					



## **Florida Department of Transportation District VI**

### **"2022 Transportation Alternatives Application"**



**Submitted By: The City of Florida City**

**February 18, 2022**

**TABLE OF CONTENTS**

	<u>Page No.</u>
Section 1: Letter of Transmittal.....	2
Section 2: Project Description.....	3
Section 3: Scope of Work.....	5
Section 4: Project Implementation Plan.....	6
Section 5: Environmental Evaluation.....	7
Section 6: Right of Way Evaluation.....	8
Section 7: Opinion of Probable Cost.....	9
Section 8: Local Agency Funding Contribution.....	10
Section 9: LAP Certification Status.....	11
Section 10: Past Performance.....	12

**Section 1: Letter of Transmittal**

The letter of transmittal is attached herein.



## Office of the Mayor

February 18, 2022

Franchesca Taylor, AICP, ENV SP  
MDC Transportation Planning Organization  
150 West Flagler Street, Suite 1900  
Miami, Florida 33130

Re: Transportation Alternatives 2022 Application Cycle

Dear Ms. Taylor:

It is with great pleasure that I am able to submit the enclosed application for the transportation alternatives 2022 application cycle on behalf of the City of Florida City. The application describes the planned City Sidewalk Improvement Program to build and replace 3.1 miles of sidewalk links in the City. Florida City is one of the poorest communities in the State and suffers from an inordinate amount of discontinuous sidewalks. This hinders residents from accessing the City's Busway transit station and stops, as well as, students biking and/or walking to Florida City Elementary School.

This project, which enjoys widespread community support, solidly meets all of the grant evaluation criteria as summarized below.

- \* Improves safety and mobility in the City for bicycle riders and pedestrians, including school children.
- \* Substantially enhance access to the three (3) existing and planned Busway stations in the City which are part of the County's SMART Plan.
- \* Significantly increase mobility for disadvantaged groups such as the elderly, children and the poor. The City has one of the lowest resident auto ownership ratios and thus transit, bicycling and walking are the primary modes of transportation.
- \* The City is proposing to contribute 25% of the project cost from local funds.
- \* Quality of life will be greatly enhanced in the northwest and southwest neighborhoods including better air quality, public safety and reduced vehicle trips.



FDOT Transportation Alternatives Cycle  
February 18, 2022  
Page 2

Don't hesitate to contact Henry Iler, the City's Planner (email: [henry@ilerplanning.com](mailto:henry@ilerplanning.com)), if you have any questions regarding our application or need additional information.

Thank you,

A handwritten signature in blue ink that reads "Otis T. Wallace".

Otis T. Wallace  
Mayor

cc. Henry Iler, AICP  
Florida City Planner

## **Section 2: Project Description**

The Florida City Sidewalk Improvement Program involves the construction of approximately 3.1 miles of new sidewalks within the City's northwest (NW) and southwest (SW) neighborhoods. The map attached in this section shows these two (2) neighborhood areas. The sidewalk project is scheduled to be completed within a three (3) year timeframe. A cost estimate is provided in Section 7 by the City Engineer showing a total project cost of \$892,100.

### **Sidewalk Assessment**

In recent months, City Public Works staff have conducted a comprehensive on-the-ground assessment of the sidewalk systems in the NW and SW areas. These areas were selected because they comprise the historic City neighborhoods containing the large majority of the population. The assessment was conducted using a standard field measuring wheel and each of the 143 links measured was referenced to the nearest street address for location purposes. Many of the links have no sidewalk but some involve the replacement of substantially damaged existing sidewalks. The list of the links identified and the length of each is attached in this section in a 5-page document prepared by the City's Project Manager, Eugene Leon. It shows the length of new and replacement sidewalks in the improvement program as follows:

- \* NW Area: 1,555 linear feet
- \* SW Area: 15,100 linear feet
- Total: 16,655 linear feet

All of the public right-of-way required for this project is in place; no additional right-of-way will be needed.

### **Area Transit Stations and School**

Looking at the attached map, it identifies the NW and SW Areas, as mentioned before, and also shows the three (3) transit stations and stops along the Miami-Dade County Busway which traverses the NW Area and ends at West Palm Drive on the edge of the SW Area. In addition, the map identifies the location of Florida City Elementary School on NW 6<sup>th</sup> Avenue in the NW Area.

### **Project Meets Grant Criteria**

This project fully complies with the grant evaluation criteria of the FDOT and TPO. It will greatly improve safety in the City for bicycle riders and pedestrians of all ages. The new sidewalk connections will substantially enhance access to the three (3) Busway stations in the City which are part of the County's SMART Plan.

Florida City is one of the poorest cities in the State with a poverty rate of 40% according to the most recent Census figures. By comparison, the poverty rate in the State of Florida is 12% and Miami-Dade County 15%. A large portion of the NW Area is designated as a

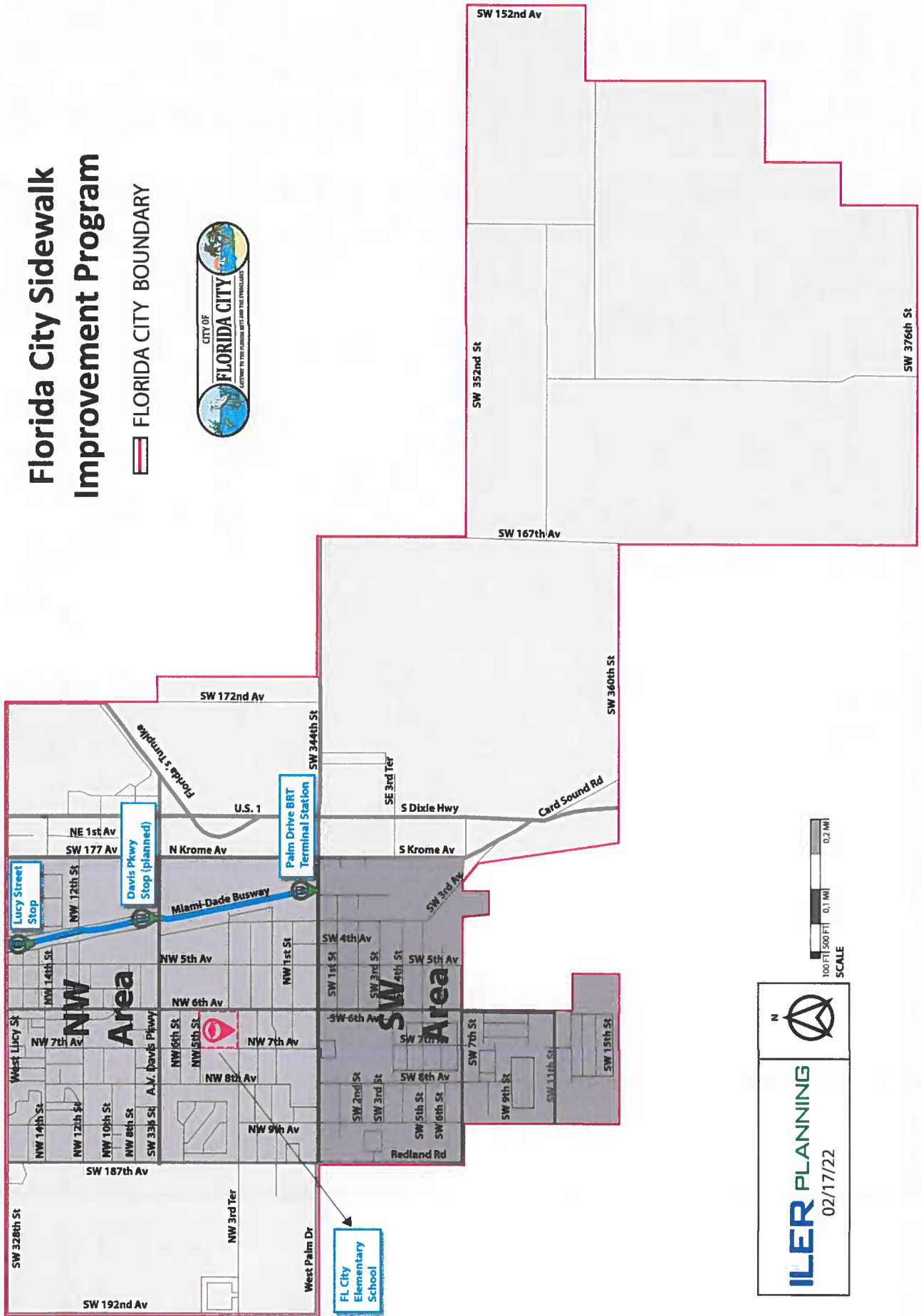
Community Development Block Grant (CDBG) area and the City's Community Redevelopment Agency (CRA) area boundary includes both the NW and SW Areas. The City also has a large number of disabled residents comprising 15% of the population. As with many poorer communities, Florida City exhibits a very low rate of resident auto ownership thus transit, bicycling and walking are very important modes of transportation. It was mentioned previously that Florida City Elementary School is located in the improvement area and it should be noted many kids attend this school from both the NW and SW Areas. These new sidewalks will significantly increase mobility and safety for disadvantaged groups such as the elderly, children and the poor.

The proposed Sidewalk Improvement Program will be greatly enhance the quality of life in the City's NW and SW neighborhoods including better air quality, public safety and reduced use of automobiles. This program has widespread community support and the full endorsement of the Florida City City Commission.

To show its commitment to this project, the City is proposing to contribute 25% of the project cost from local funds.

# Florida City Sidewalk Improvement Program

 FLORIDA CITY BOUNDARY



  
**ILER PLANNING**  
 02/17/22

CITY OF FLORIDA CITY  
Damaged/Missing Sidewalks

15 Feb 2022

gl

Ln	Nearest Address - Location	Length
1	1060 NW 9 Ave	10 Lin Ft
2	1050 NW 9 Ave	10 Lin Ft
3	1469 NW 8 Ave	15 Lin Ft
4	409 NW 15 St	15 Lin Ft
5	545 NW 15 St	15 Lin Ft
6	562 NW 15 St	10 Lin Ft
7	589 NW 15 St	10 Lin Ft
8	578 NW 14 St	10 Lin Ft
9	590 NW 14 St	15 Lin Ft
10	523 NW 14 St	10 Lin Ft
11	533 NW 14 St	10 Lin Ft
12	645 NW 14 St	10 Lin Ft
13	691 NW 14 St	15 Lin Ft
14	500 NW 14 St	15 Lin Ft
15	475 NW 14 St	15 Lin Ft
16	305 NW 5 Ave	15 Lin Ft
17	329 NW 5 Ave	15 Lin Ft
18	1330 NW 5 Ave	10 Lin Ft
19	1312 NW 5 Ave	15 Lin Ft
20	1305 NW 5 Ave	10 Lin Ft
21	1421 NW 5 Ave	10 Lin Ft
22	1413 NW 5 Ave	10 Lin Ft
23	1513 NW 5 Ave	15 Lin Ft
24	650 NW 5 Ave	15 Lin Ft
25	1622 NW 5 Ave	5 Lin Ft
26	1514 NW 5 Ave	15 Lin Ft
27	650 NW 5 Ave	15 Lin Ft
28	521 NW 16 St	10 Lin Ft
29	539 NW 16 St	10 Lin Ft
30	538 NW 16 St	5 Lin Ft
31	441 NW 16 St	10 Lin Ft

32	450 NW 16 St	10 Lin Ft
33	950 NW 16 St	10 Lin Ft
34	440 NW 16 St	10 Lin Ft
35	421 Lucy St	10 Lin Ft
36	545 Lucy St	55 Lin Ft
37	221 NW 3 Ave	15 Lin Ft
38	241 NW 3 Ave	10 Lin Ft
39	NW 3 Ave bet 2/3 St	375 Lin Ft
40	410 NW 15 St	5 Lin Ft
41	409 NW 15 St	5 Lin Ft
42	432 NW 15 St	5 Lin Ft
43	440 NW 15 St	5 Lin Ft
44	406 NW 14 St	10 Lin Ft
45	729 NW 12 St	15 Lin Ft
46	225 NW 12 St	5 Lin Ft
47	570 NW 12 St	10 Lin Ft
48	1055 NW 6 Ave	20 Lin Ft
49	746 NW 7 Ct	10 Lin Ft
50	715 NW 8 Ave	10 Lin Ft
51	706 NW 8 Ave	75 Lin Ft
52	336 NW 8 Ave	10 Lin Ft
53	426 NW 8 Ave	5 Lin Ft
54	715 NW 10 St	10 Lin Ft
55	705 NW 9 Ave	50 Lin Ft
56	745 NW 9 Ave	15 Lin Ft
57	426 NW 9 Pl	15 Lin Ft
58	706 NW 8 Ct	45 Lin Ft
59	705 NW 8 Ct	65 Lin Ft
60	916 NW 8 St	25 Lin Ft
61	950 NW 8 St	40 Lin Ft
62	937 NW 10 St	30 Lin Ft
63	923 NW 10 St	5 Lin Ft
64	853 NW 3 St	10 Lin Ft
65	390 NW 3 St	25 Lin Ft

66	373 NW 3 St	45 Lin Ft
67	352 NW 3 St	10 Lin Ft
68	780 NW 5 St	10 Lin Ft
69	445 NW 9 Pl	20 Lin Ft
70	906 NW 4 Ter	35 Lin Ft
71	906 NW 4 La	15 Lin Ft
72	763 Davis Pkwy	15 Lin Ft
73	865 Davis Pkwy	<u>15 Lin Ft</u>
74	Sub-Total Lin Ft NW (a)	1555 Lin Ft
75		
76	537 SW 2 St	15 Lin Ft
77	302 SW 3 St	15 Lin Ft
78	304 SW 3 St	5 Lin Ft
79	310 SW 3 St	15 Lin Ft
80	305 SW 3 St	10 Lin Ft
81	327 SW 3 St	10 Lin Ft
82	328 SW 3 St	5 Lin Ft
83	336 SW 3 St	15 Lin Ft
84	344 SW 3 St	10 Lin Ft
85	353 SW 3 St	5 Lin Ft
86	639 SW 3 St	15 Lin Ft
87	409 SW 3 St	30 Lin Ft
88	569 SW 3 St	5 Lin Ft
89	577 SW 3 St	10 Lin Ft
90	305 SW 5 Ave	70 Lin Ft
91	348 SW 5 Ave	25 Lin Ft
92	130 SW 5 Ave	30 Lin Ft
93	146 SW 5 Ave	45 Lin Ft
94	220 SW 5 Ave	15 Lin Ft
95	305 SW 5 Ave	10 Lin Ft
96	421 SW 5 Ave	50 Lin Ft
97	505 SW 5 Ave	15 Lin Ft
98	529 SW 5 Av	15 Lin Ft
99	535 SW 5 Ave	35 Lin Ft

100	540 SW 5 Ave	20 Lin Ft
101	545 SW 5 Ave	10 Lin Ft
102	305 SW 6 Ave	35 Lin Ft
103	546 SW 6 Ave	20 Lin Ft
104	687 SW 7 Ave	15 Lin Ft
105	240 SW 8 Ave	20 Lin Ft
106	545 SW 5 St	10 Lin Ft
107	546 SW 5 St	10 Lin Ft
108	565 SW 5 St	5 Lin Ft
109	577 SW 5 St	15 Lin Ft
110	615 SW 5 St	50 Lin Ft
111	625 SW 5 St	35 Lin Ft
112	675 SW 5 St	15 Lin Ft
113	726 SW 5 St	15 Lin Ft
114	723 SW 5 St	15 Lin Ft
115	680 SW 7 St	10 Lin Ft
116	530 SW 7 St	15 Lin Ft
117	720 SW 7 St	10 Lin Ft
118	570 SW 6 St	10 Lin Ft
119	578 SW 6 St	15 Lin Ft
120	445 SW 3 Ave	20 Lin Ft
121	687 SW 6 Ter	15 Lin Ft
122	332 SW 3 Ave	15 Lin Ft
123	639 SW 3 Ter	15 Lin Ft
124	787 SW 3 Ter	10 Lin Ft
125	435 SW 6 Ct	10 Lin Ft
126	615 SW 8 Ave	15 Lin Ft
127	515 SW 8 Ave	15 Lin Ft
128	305 SW 8 Ave	10 Lin Ft
129	SW 2 St bet 884/9 Ave	125 Lin Ft
130	SW 9 Ave bet 4 Terr/5 St	340 Lin Ft
131	SW 5 St bet 9 Ave/872	150 Lin Ft
132	SW 8 Sve bet 5 St/425	280 Lin Ft
133	SW 7 St bet 8 Ave/7 Ave	550 Lin Ft



134	SW 7 Ave bet 6 Terr/7 St	150 Lin Ft
135	SW 6 Terr bet 7 Ave/758	250 Lin Ft
136	SW 7 Ct bet 556/5Terr	575 Lin Ft
137	SW 7 Ct bet 5 St/4 St	580 Lin Ft
138	SW 5 St bet 7 Ct/8 Ave	460 Lin Ft
139	SW 7 Ct bet 5 St/406	150 Lin Ft
140	SW 7 Ave bet 3 Terr/5 St	550 Lin Ft
141	SW 7 Ave bet 5 St/5 Terr	475 Lin Ft
142	SW 5 Terr bet 7 Ave 7 Ct	150 Lin Ft
143	SW 4 St bet 5 Ave/3 Ave	1250 Lin Ft
144	SW 3 Ave bet 1 St/3 St	2150 Lin Ft
145	Krome Ave bet SW 9 St/336 St	<u>5280 Lin Ft</u>
146	Sub-Total Lin Ft SW (b)	15100 Lin Ft
147		
148	Total Lin Ft Sidewalks (a+b)	16655 Lin Ft
149		

150 Note 1: all sidewalks are 5 Ft wide

151 Note 2: all sidewalks were measured with a 12"

152 wheel Lufkin HI-Viz WW38

153 Note 3: Prepared by Eugene Leon, City Project Manager

### **Section 3: Scope of Work**

This project will be managed by the City's Project Manager, Gene Leon, with assistance from the City's Engineer, Pedro Gonzalez. As shown in Section 10, the City has solid experience in managing sidewalk improvements and thus the design plans for standard sidewalk construction are already completed and tested on prior projects. The proposed scope of work is provided below.

#### **Task 1: Grant Agreement**

City staff will work with the FDOT and TPO to finalize and execute the grant agreement, and designate the FDOT Grant Coordinator for the project

#### **Task 2: Contractor Selection**

The City will advertise the project for contractor selection consistent with State purchasing procedures for services. The Mayor, City Engineer and Project Manager will form the selection committee.

#### **Task 3: Building Permits**

The contractor selected will obtain a general building permit for groups of related sidewalk links in coordination with the City's Building Official.

#### **Task 4: Construction**

The contractor will mobilize the necessary equipment and personnel to start and sustain construction through the project period. This task is expected to last for a major portion of the grant period.

#### **Task 5: Inspections**

City building inspectors will inspect and approve each sidewalk link when completed. The City Engineer will also perform periodic inspections of completed portions of the project.

#### **Task 6: Project Completion**

When all sidewalk links completed, the City Engineer will perform an overall final inspection and issue a report. The report will be forwarded to the Grant Coordinator for review and approval. Once approval is obtained, the grant will be closed out.

## Section 4: Project Implementation Plan

### Schedule

The project schedule is provided below.

<u>Task</u>	<u>Completion (from NTP*)</u>
1. Grant Agreement	60 days
2. Contractor Selection	180 days
3. Building Permits	180 to 1,035 days
4. Construction	240 to 1,035 days
5. Inspection	300 to 1,035 days
6. Project Completion	1,035 to 1,095 days

\* Notice-to-Proceed.

### Project Permits

The contractor will be responsible for obtaining project permits for each sidewalk link. In most cases, this will only involve the City's Building Division. However, the sidewalks on Krome Avenue (SW 177<sup>th</sup> Avenue) will require approval from Miami-Dade County.

**Section 5: Environmental Evaluation**

City staff has conducted an environmental assessment of the proposed sidewalk links and found no wetland, native habitat or other environmental issues.

## **Section 6: Right of Way Evaluation**

As discussed previously, necessary public right-of way under the construction of the 143 sidewalk links is already in place. No additional right-of-way will be needed.

**Section 7: Opinion of Probable Cost**

An opinion of probable cost, prepared by the City Engineer is attached in this section.

**CONSTRUCTION COST ESTIMATE SIDEWALK IMPROVEMENTS FLORIDA CITY**

Sidewalk Location	Length, FT	Unit Price, \$/FT	Sub-Total Cost
<b>NW Area</b>			
1060 NW 9 AVE	10	\$55.00	\$550
1050 NW 9 AVE	10	\$55.00	\$550
1469 NW 8 AVE	15	\$55.00	\$825
409 NW 15 ST	15	\$55.00	\$825
545 NW 15 ST	15	\$55.00	\$825
562 NW 15 ST	10	\$55.00	\$550
589 NW 15 ST	10	\$55.00	\$550
578 NW 14 ST	10	\$55.00	\$550
590 NW 14 ST	15	\$55.00	\$825
523 NW 14 ST	10	\$55.00	\$550
533 NW 14 ST	10	\$55.00	\$550
645 NW 14 ST	10	\$55.00	\$550
691 NW 14 ST	15	\$55.00	\$825
500 NW 14 ST	15	\$55.00	\$825
475 NW 14 ST	15	\$55.00	\$825
305 NW 5 AVE	15	\$55.00	\$825
329 NW 5 AVE	15	\$55.00	\$825
1330 NW 5 AVE	10	\$55.00	\$550
1312 NW 5 AVE	15	\$55.00	\$825
1305 NW 5 AVE	10	\$55.00	\$550
1421 NW 5 AVE	10	\$55.00	\$550
1413 NW 5 AVE	10	\$55.00	\$550
1513 NW 5 AVE	15	\$55.00	\$825
650 NW 5 AVE	15	\$55.00	\$825
1622 NW 5 AVE	5	\$55.00	\$275
1514 NW 5 AVE	15	\$55.00	\$825
650 NW 5 AVE	15	\$55.00	\$825

**CONSTRUCTION COST ESTIMATE SIDEWALK IMPROVEMENTS FLORIDA CITY**

Sidewalk Location	Length, FT	Unit Price, \$/FT	Sub-Total Cost
521 NW 16 ST	10	\$55.00	\$550
539 NW 16 ST	10	\$55.00	\$550
538 NW 16 ST	5	\$55.00	\$275
441 NW 16 ST	10	\$55.00	\$550
450 NW 16 ST	10	\$55.00	\$550
950 NW 16 ST	10	\$55.00	\$550
440 NW 16 ST	10	\$55.00	\$550
421 LUCY ST	10	\$55.00	\$550
545 LUCY ST	55	\$55.00	\$3,025
221 NW 3 AVE	15	\$55.00	\$825
241 NW 3 AVE	10	\$55.00	\$550
410 NW 15 ST	5	\$55.00	\$275
409 NW 15 ST	5	\$55.00	\$275
432 NW 15 ST	5	\$55.00	\$275
440 NW 15 ST	5	\$55.00	\$275
406 NW 14 ST	10	\$55.00	\$550
729 NW 12 ST	15	\$55.00	\$825
225 NW 12 ST	5	\$55.00	\$275
570 NW 12 ST	10	\$55.00	\$550
1055 NW 6 AVE	20	\$55.00	\$1,100
746 NW 7 CT	10	\$55.00	\$550
715 NW 8 AVE	10	\$55.00	\$550
706 NW 8 AVE	75	\$55.00	\$4,125
336 NW 8 AVE	10	\$55.00	\$550
426 NW 8 AVE	5	\$55.00	\$275
715 NW 10 ST	10	\$55.00	\$550
705 NW 9 AVE	50	\$55.00	\$2,750
745 NW 9 AVE	15	\$55.00	\$825



**CONSTRUCTION COST ESTIMATE SIDEWALK IMPROVEMENTS FLORIDA CITY**

Sidewalk Location	Length, FT	Unit Price, \$/FT	Sub-Total Cost
426 NW 9 PL	15	\$55.00	\$825
706 NW 8 CT	45	\$55.00	\$2,475
705 NW 8 CT	65	\$55.00	\$3,575
916 NW 8 ST	25	\$55.00	\$1,375
950 NW 8 ST	40	\$55.00	\$2,200
937 NW 10 ST	30	\$55.00	\$1,650
923 NW 10 ST	5	\$55.00	\$275
853 NW 3 ST	10	\$55.00	\$550
390 NW 3 ST	25	\$55.00	\$1,375
373 NW 3 ST	45	\$55.00	\$2,475
352 NW 3 ST	10	\$55.00	\$550
780 NW 5 ST	10	\$55.00	\$550
445 NW 9 PL	20	\$55.00	\$1,100
906 NW 4 TER	35	\$55.00	\$1,925
906 NW 4 LA	15	\$55.00	\$825
763 DAVIS PKWY	15	\$55.00	\$825
NW 3 AVE BET 2/3 ST	375	\$55.00	\$20,625
865 DAVIS PKWY	15	\$55.00	\$825
<b>Total NW Area</b>	<b>1,555</b>		<b>\$85,525</b>

**CONSTRUCTION COST ESTIMATE SIDEWALK IMPROVEMENTS FLORIDA CITY**

Sidewalk Location	Length, FT	Unit Price, \$/FT	Sub-Total Cost
<b>SW Area</b>			
537 SW 2 ST	15	\$55.00	\$825.00
302 SW 3 ST	15	\$55.00	\$825.00
304 SW 3 ST	5	\$55.00	\$275.00
310 SW 3 ST	15	\$55.00	\$825.00
305 SW 3 ST	10	\$55.00	\$550.00
327 SW 3 ST	10	\$55.00	\$550.00
328 SW 3 ST	5	\$55.00	\$275.00
336 SW 3 ST	15	\$55.00	\$825.00
344 SW 3 ST	10	\$55.00	\$550.00
353 SW 3 ST	5	\$55.00	\$275.00
639 SW 3 ST	15	\$55.00	\$825.00
409 SW 3 ST	30	\$55.00	\$1,650.00
569 SW 3 ST	5	\$55.00	\$275.00
577 SW 3 ST	10	\$55.00	\$550.00
305 SW 5 AVE	70	\$55.00	\$3,850.00
348 SW 5 AVE	25	\$55.00	\$1,375.00
130 SW 5 AVE	30	\$55.00	\$1,650.00
146 SW 5 AVE	45	\$55.00	\$2,475.00
220 SW 5 AVE	15	\$55.00	\$825.00
305 SW 5 AVE	10	\$55.00	\$550.00
421 SW 5 AVE	50	\$55.00	\$2,750.00
505 SW 5 AVE	15	\$55.00	\$825.00
529 SW 5 AVE	15	\$55.00	\$825.00
535 SW 5 AVE	35	\$55.00	\$1,925.00
540 SW 5 AVE	20	\$55.00	\$1,100.00
545 SW 5 AVE	10	\$55.00	\$550.00
305 SW 6 AVE	35	\$55.00	\$1,925.00

**CONSTRUCTION COST ESTIMATE SIDEWALK IMPROVEMENTS FLORIDA CITY**

Sidewalk Location	Length, FT	Unit Price, \$/FT	Sub-Total Cost
546 SW 6 AVE	20	\$55.00	\$1,100.00
687 SW 7 AVE	15	\$55.00	\$825.00
240 SW 8 AVE	20	\$55.00	\$1,100.00
545 SW 5 ST	10	\$55.00	\$550.00
546 SW 5 ST	10	\$55.00	\$550.00
565 SW 5 ST	5	\$55.00	\$275.00
577 SW 5 ST	15	\$55.00	\$825.00
615 SW 5 ST	50	\$55.00	\$2,750.00
625 SW 5 ST	35	\$55.00	\$1,925.00
675 SW 5 ST	15	\$55.00	\$825.00
726 SW 5 ST	15	\$55.00	\$825.00
723 SW 5 ST	15	\$55.00	\$825.00
680 SW 7 ST	10	\$55.00	\$550.00
530 SW 7 ST	15	\$55.00	\$825.00
720 SW 7 ST	10	\$55.00	\$550.00
570 SW 6 ST	10	\$55.00	\$550.00
578 SW 6 ST	15	\$55.00	\$825.00
445 SW 3 AVE	20	\$55.00	\$1,100.00
687 SW 6 TER	15	\$55.00	\$825.00
332 SW 3 AVE	15	\$55.00	\$825.00
639 SW 3 TER	15	\$55.00	\$825.00
787 SW 3 TER	10	\$55.00	\$550.00
435 SW 6 CT	10	\$55.00	\$550.00
615 SW 8 AVE	15	\$55.00	\$825.00
515 SW 8 AVE	15	\$55.00	\$825.00
305 SW 8 AVE	10	\$55.00	\$550.00
SW 2 ST BET 884/9 AVE	125	\$55.00	\$6,875.00
SW 9 AVE BET 4 TER/5 ST	340	\$55.00	\$18,700.00

<b>CONSTRUCTION COST ESTIMATE SIDEWALK IMPROVEMENTS FLORIDA CITY</b>			
<b>Sidewalk Location</b>	<b>Length, FT</b>	<b>Unit Price, \$/FT</b>	<b>Sub-Total Cost</b>
SW 5 ST BET 9 AVE/872	150	\$55.00	\$8,250.00
SW 8 SVE BET 5 ST/425	280	\$55.00	\$15,400.00
SW 7 ST BET 8 AVE/7 AVE	550	\$55.00	\$30,250.00
SW 7 AVE BET 6 TERR/7 ST	150	\$55.00	\$8,250.00
SW 7 AVE BET 5 TERR/6 TERR	250	\$55.00	\$13,750.00
SW 6 TERR BET 7 AVE/758	250	\$55.00	\$13,750.00
SW 7 CT BET 556 TERR/5 TERR	575	\$55.00	\$31,625.00
SW 7 CT BET 5 ST/4 ST	580	\$55.00	\$31,900.00
SW 5 ST BET 7 CT/8 AVE	460	\$55.00	\$25,300.00
SW 7 CT BET 5 ST/406	150	\$55.00	\$8,250.00
SW 7 AVE BET 3 TERR/5 ST	550	\$55.00	\$30,250.00
SW 7 AVE BET 5 ST/5 TERR	475	\$55.00	\$26,125.00
SW 5 TERR BET 7 AVE 7 CT	150	\$55.00	\$8,250.00
SW 4 ST BET 5 AVE/3 AVE	1250	\$55.00	\$68,750.00
SW 3 AVE BET 1 ST/3 ST	2150	\$55.00	\$118,250.00
KROME AVE BET SW 9 ST/336 ST	5280	\$55.00	\$290,400.00
<b>Totals SW Area</b>	<b>14,665</b>		<b>\$806,575.00</b>
<b>Total Cost Sidewalk Improvements</b>			<b>\$892,100.00</b>
<b>Notes:</b>			
1. Includes the price for sidewalk construction/restoration in the public right of way of Florida City.			
2. The unit price for sidewalk improvements used for this estimate corresponds to the most recent unit price for bond estimates of subdivision improvements in Florida City.			
I, Pedro Delfin Gonzalez, P.E., City Engineer of Florida City certify to the best of my knowledge that the costs presented above are accurate for construction estimation purposes.			

**Pedro D. Gonzalez, P.E.**  
 Digitally signed by Pedro D. Gonzalez, P.E.  
 DN: cn=Pedro D. Gonzalez, P.E., o=Baljet Environmental, Inc., ou, email=pgonzalez@baljet.com, c=US  
 Date: 2022.02.17 13:21:49 -05'00'

**Section 8: Local Agency Funding Contribution**

The City proposes to contribute 25% of the total project cost from local funds. This would total \$223,025.

**Section 9: LAP Certification Status**

The City will be the project sponsor and will enter into a Local Agency Program (LAP) Agreement with FDOT if selected, prior to the initiation of the scope of work.

## **Section 10: Past Performance**

### **Procurement**

The City has long and successful experience in procuring services for a wide-range of municipal projects. Attached in this section is a list of the 18 sidewalk projects completed since 2018, totaling 11,721 linear feet.

### **Project Management**

The Public Works Department has worked hand-in-hand with City Administration and Building Division to complete the 18 sidewalk projects listed herein and many other City construction projects. This includes effective management of the contractor and on-site work, and processing of valid change orders. Construction management is coordinated by the City's Project Manager and City Engineer.

### **Invoicing**

The City processes and approves all contractor invoices for work completed, checking the quality and extent of work done in the field, and the personnel hours and quantities shown on each invoice. Approved invoices are paid within 30 days. Invoices will also be sent to the FDOT Grant Coordinator.

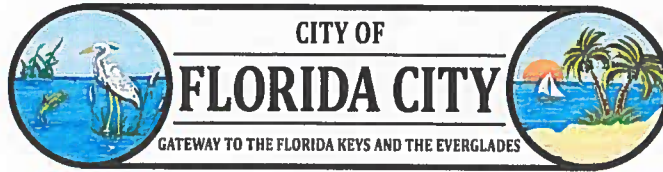
City of Florida City  
Sidewalk Improvements

16 Feb 2022

91

Ln	Contractor's Name	Location	Qty-LinFt	Amount \$	Completion Date
1	HG Construction	NW 5 Ave/Roberts Park	1129	\$ 21,713.00	Dec 2021
2	Roadway Construction	East Plm Dr-SW 344 St	3596	\$ 72,723.00	Jul 2021
3	Maggolc Inc	NW 1 and 2 St frm NW			
4		e Ave to NW 7 Ave	968	\$ 22,924.00	Sep2019
5	Weekley Asphalt Paving	SW 1 St from SW 2 Ave			
7		to SW 3 Ave/NW 3 Ave			
8		, NW 4 Sve & NW 6 Ave	3004	\$ 21,683.00	Apr 2018
9	Tequesta Const Services	SW 7 St at 5,6,7 Ave	265	\$ 8,625.00	Oct 2020
10	Tequesta Const Services	SW 5 Ave/5 St	849	\$ 16,520.00	Sep 2020
11	Tequesta Const Services	NW 6 Ave/1 St	36	\$ 1,950.00	Dec 2020
12	Coast to Coast Concrete	NW 8 Ave/14 St	37	\$ 2,200.00	Feb 2021
13	Tequesta Const Services	NW 9 St/3 La	50	\$ 2,875.00	Mar 2021
14	Tequesta Const Services	SW 4 Ave/1 St	35	\$ 1,875.00	Mar 2021
15	Coast to Coast Concrete	SW 6 Ave/7St	60	\$ 4,500.00	Apr 2021
16	Tequesta Const Services	SW 6 St/3 Ave	85	\$ 3,294.00	Mar 2021
17	Coast to Coast Concrete	NW 6 Ave/Davis Pkwy	400	\$ 9,000.00	Jul 2021
18	Tequesta Const Services	NW 7 Ave/3 St	950	\$ 7,125.00	Jul 2021
19	Tequesta Const Services	NW 7 Ave/3 Terr	72	\$ 3,425.00	Jul 2021
20	Tequesta Const Services	715-775 NW Terr	105	\$ 7,140.00	Nov 2021
21	Tequesta Const Services	SW 8 St/6 Ave	80	\$ 4,680.00	Jan 2022
22					
23					
24					





## **Florida Department of Transportation District VI**

### **"2022 Transportation Alternatives Application"**



**Submitted By: The City of Florida City**

**February 18, 2022**

**TABLE OF CONTENTS**

	<u>Page No.</u>
Section 1: Letter of Transmittal.....	2
Section 2: Project Description.....	3
Section 3: Scope of Work.....	5
Section 4: Project Implementation Plan.....	6
Section 5: Environmental Evaluation.....	7
Section 6: Right of Way Evaluation.....	8
Section 7: Opinion of Probable Cost.....	9
Section 8: Local Agency Funding Contribution.....	10
Section 9: LAP Certification Status.....	11
Section 10: Past Performance.....	12

**Section 1: Letter of Transmittal**

The letter of transmittal is attached herein.



## Office of the Mayor

February 18, 2022

Franchesca Taylor, AICP, ENV SP  
MDC Transportation Planning Organization  
150 West Flagler Street, Suite 1900  
Miami, Florida 33130

Re: Transportation Alternatives 2022 Application Cycle

Dear Ms. Taylor:

It is with great pleasure that I am able to submit the enclosed application for the transportation alternatives 2022 application cycle on behalf of the City of Florida City. The application describes the planned City Sidewalk Improvement Program to build and replace 3.1 miles of sidewalk links in the City. Florida City is one of the poorest communities in the State and suffers from an inordinate amount of discontinuous sidewalks. This hinders residents from accessing the City's Busway transit station and stops, as well as, students biking and/or walking to Florida City Elementary School.

This project, which enjoys widespread community support, solidly meets all of the grant evaluation criteria as summarized below.

- \* Improves safety and mobility in the City for bicycle riders and pedestrians, including school children.
- \* Substantially enhance access to the three (3) existing and planned Busway stations in the City which are part of the County's SMART Plan.
- \* Significantly increase mobility for disadvantaged groups such as the elderly, children and the poor. The City has one of the lowest resident auto ownership ratios and thus transit, bicycling and walking are the primary modes of transportation.
- \* The City is proposing to contribute 25% of the project cost from local funds.
- \* Quality of life will be greatly enhanced in the northwest and southwest neighborhoods including better air quality, public safety and reduced vehicle trips.

FDOT Transportation Alternatives Cycle  
February 18, 2022  
Page 2

Don't hesitate to contact Henry Iler, the City's Planner (email: [henry@ilerplanning.com](mailto:henry@ilerplanning.com)), if you have any questions regarding our application or need additional information.

Thank you,

A handwritten signature in blue ink that reads "Otis T. Wallace". The signature is written in a cursive style.

Otis T. Wallace  
Mayor

cc. Henry Iler, AICP  
Florida City Planner

## **Section 2: Project Description**

The Florida City Sidewalk Improvement Program involves the construction of approximately 3.1 miles of new sidewalks within the City's northwest (NW) and southwest (SW) neighborhoods. The map attached in this section shows these two (2) neighborhood areas. The sidewalk project is scheduled to be completed within a three (3) year timeframe. A cost estimate is provided in Section 7 by the City Engineer showing a total project cost of \$892,100.

### **Sidewalk Assessment**

In recent months, City Public Works staff have conducted a comprehensive on-the-ground assessment of the sidewalk systems in the NW and SW areas. These areas were selected because they comprise the historic City neighborhoods containing the large majority of the population. The assessment was conducted using a standard field measuring wheel and each of the 143 links measured was referenced to the nearest street address for location purposes. Many of the links have no sidewalk but some involve the replacement of substantially damaged existing sidewalks. The list of the links identified and the length of each is attached in this section in a 5-page document prepared by the City's Project Manager, Eugene Leon. It shows the length of new and replacement sidewalks in the improvement program as follows:

- \* NW Area: 1,555 linear feet
- \* SW Area: 15,100 linear feet
- Total: 16,655 linear feet

All of the public right-of-way required for this project is in place; no additional right-of-way will be needed.

### **Area Transit Stations and School**

Looking at the attached map, it identifies the NW and SW Areas, as mentioned before, and also shows the three (3) transit stations and stops along the Miami-Dade County Busway which traverses the NW Area and ends at West Palm Drive on the edge of the SW Area. In addition, the map identifies the location of Florida City Elementary School on NW 6<sup>th</sup> Avenue in the NW Area.

### **Project Meets Grant Criteria**

This project fully complies with the grant evaluation criteria of the FDOT and TPO. It will greatly improve safety in the City for bicycle riders and pedestrians of all ages. The new sidewalk connections will substantially enhance access to the three (3) Busway stations in the City which are part of the County's SMART Plan.

Florida City is one of the poorest cities in the State with a poverty rate of 40% according to the most recent Census figures. By comparison, the poverty rate in the State of Florida is 12% and Miami-Dade County 15%. A large portion of the NW Area is designated as a

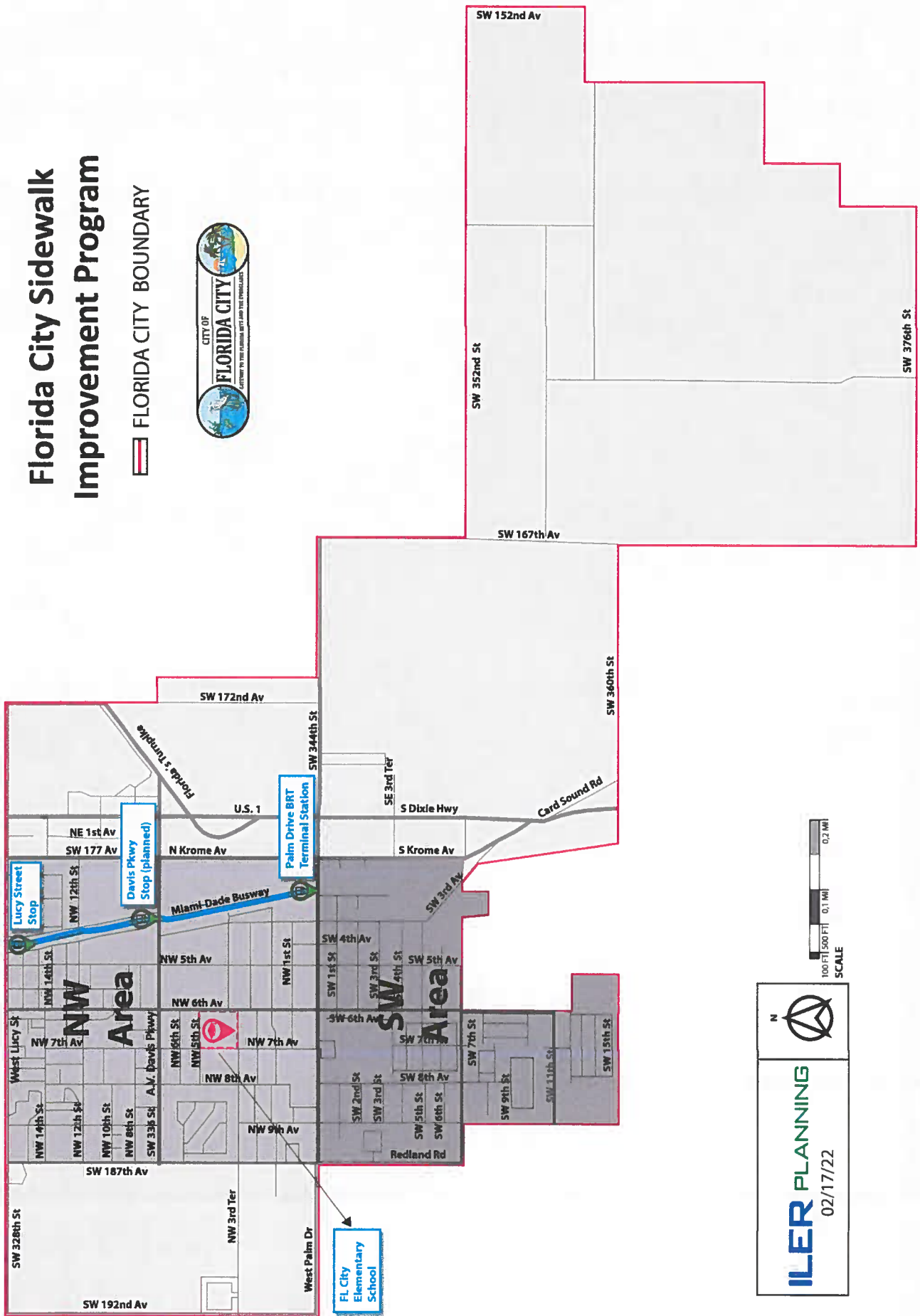
Community Development Block Grant (CDBG) area and the City's Community Redevelopment Agency (CRA) area boundary includes both the NW and SW Areas. The City also has a large number of disabled residents comprising 15% of the population. As with many poorer communities, Florida City exhibits a very low rate of resident auto ownership thus transit, bicycling and walking are very important modes of transportation. It was mentioned previously that Florida City Elementary School is located in the improvement area and it should be noted many kids attend this school from both the NW and SW Areas. These new sidewalks will significantly increase mobility and safety for disadvantaged groups such as the elderly, children and the poor.

The proposed Sidewalk Improvement Program will be greatly enhance the quality of life in the City's NW and SW neighborhoods including better air quality, public safety and reduced use of automobiles. This program has widespread community support and the full endorsement of the Florida City City Commission.

To show its commitment to this project, the City is proposing to contribute 25% of the project cost from local funds.

# Florida City Sidewalk Improvement Program

FLORIDA CITY BOUNDARY



  
**ILER PLANNING**  
 02/17/22



CITY OF FLORIDA CITY  
Damaged/Missing Sidewalks

15 Feb 2022

gl

Ln	Nearest Address - Location	Length
1	1060 NW 9 Ave	10 Lin Ft
2	1050 NW 9 Ave	10 Lin Ft
3	1469 NW 8 Ave	15 Lin Ft
4	409 NW 15 St	15 Lin Ft
5	545 NW 15 St	15 Lin Ft
6	562 NW 15 St	10 Lin Ft
7	589 NW 15 St	10 Lin Ft
8	578 NW 14 St	10 Lin Ft
9	590 NW 14 St	15 Lin Ft
10	523 NW 14 St	10 Lin Ft
11	533 NW 14 St	10 Lin Ft
12	645 NW 14 St	10 Lin Ft
13	691 NW 14 St	15 Lin Ft
14	500 NW 14 St	15 Lin Ft
15	475 NW 14 St	15 Lin Ft
16	305 NW 5 Ave	15 Lin Ft
17	329 NW 5 Ave	15 Lin Ft
18	1330 NW 5 Ave	10 Lin Ft
19	1312 NW 5 Ave	15 Lin Ft
20	1305 NW 5 Ave	10 Lin Ft
21	1421 NW 5 Ave	10 Lin Ft
22	1413 NW 5 Ave	10 Lin Ft
23	1513 NW 5 Ave	15 Lin Ft
24	650 NW 5 Ave	15 Lin Ft
25	1622 NW 5 Ave	5 Lin Ft
26	1514 NW 5 Ave	15 Lin Ft
27	650 NW 5 Ave	15 Lin Ft
28	521 NW 16 St	10 Lin Ft
29	539 NW 16 St	10 Lin Ft
30	538 NW 16 St	5 Lin Ft
31	441 NW 16 St	10 Lin Ft

32	450 NW 16 St	10 Lin Ft
33	950 NW 16 St	10 Lin Ft
34	440 NW 16 St	10 Lin Ft
35	421 Lucy St	10 Lin Ft
36	545 Lucy St	55 Lin Ft
37	221 NW 3 Ave	15 Lin Ft
38	241 NW 3 Ave	10 Lin Ft
39	NW 3 Ave bet 2/3 St	375 Lin Ft
40	410 NW 15 St	5 Lin Ft
41	409 NW 15 St	5 Lin Ft
42	432 NW 15 St	5 Lin Ft
43	440 NW 15 St	5 Lin Ft
44	406 NW 14 St	10 Lin Ft
45	729 NW 12 St	15 Lin Ft
46	225 NW 12 St	5 Lin Ft
47	570 NW 12 St	10 Lin Ft
48	1055 NW 6 Ave	20 Lin Ft
49	746 NW 7 Ct	10 Lin Ft
50	715 NW 8 Ave	10 Lin Ft
51	706 NW 8 Ave	75 Lin Ft
52	336 NW 8 Ave	10 Lin Ft
53	426 NW 8 Ave	5 Lin Ft
54	715 NW 10 St	10 Lin Ft
55	705 NW 9 Ave	50 Lin Ft
56	745 NW 9 Ave	15 Lin Ft
57	426 NW 9 Pl	15 Lin Ft
58	706 NW 8 Ct	45 Lin Ft
59	705 NW 8 Ct	65 Lin Ft
60	916 NW 8 St	25 Lin Ft
61	950 NW 8 St	40 Lin Ft
62	937 NW 10 St	30 Lin Ft
63	923 NW 10 St	5 Lin Ft
64	853 NW 3 St	10 Lin Ft
65	390 NW 3 St	25 Lin Ft

66	373 NW 3 St	45 Lin Ft
67	352 NW 3 St	10 Lin Ft
68	780 NW 5 St	10 Lin Ft
69	445 NW 9 Pl	20 Lin Ft
70	906 NW 4 Ter	35 Lin Ft
71	906 NW 4 La	15 Lin Ft
72	763 Davis Pkwy	15 Lin Ft
73	865 Davis Pkwy	<u>15 Lin Ft</u>
74	Sub-Total Lin Ft NW (a)	1555 Lin Ft
75		
76	537 SW 2 St	15 Lin Ft
77	302 SW 3 St	15 Lin Ft
78	304 SW 3 St	5 Lin Ft
79	310 SW 3 St	15 Lin Ft
80	305 SW 3 St	10 Lin Ft
81	327 SW 3 St	10 Lin Ft
82	328 SW 3 St	5 Lin Ft
83	336 SW 3 St	15 Lin Ft
84	344 SW 3 St	10 Lin Ft
85	353 SW 3 St	5 Lin Ft
86	639 SW 3 St	15 Lin Ft
87	409 SW 3 St	30 Lin Ft
88	569 SW 3 St	5 Lin Ft
89	577 SW 3 St	10 Lin Ft
90	305 SW 5 Ave	70 Lin Ft
91	348 SW 5 Ave	25 Lin Ft
92	130 SW 5 Ave	30 Lin Ft
93	146 SW 5 Ave	45 Lin Ft
94	220 SW 5 Ave	15 Lin Ft
95	305 SW 5 Ave	10 Lin Ft
96	421 SW 5 Ave	50 Lin Ft
97	505 SW 5 Ave	15 Lin Ft
98	529 SW 5 Av	15 Lin Ft
99	535 SW 5 Ave	35 Lin Ft

100	540 SW 5 Ave	20 Lin Ft
101	545 SW 5 Ave	10 Lin Ft
102	305 SW 6 Ave	35 Lin Ft
103	546 SW 6 Ave	20 Lin Ft
104	687 SW 7 Ave	15 Lin Ft
105	240 SW 8 Ave	20 Lin Ft
106	545 SW 5 St	10 Lin Ft
107	546 SW 5 St	10 Lin Ft
108	565 SW 5 St	5 Lin Ft
109	577 SW 5 St	15 Lin Ft
110	615 SW 5 St	50 Lin Ft
111	625 SW 5 St	35 Lin Ft
112	675 SW 5 St	15 Lin Ft
113	726 SW 5 St	15 Lin Ft
114	723 SW 5 St	15 Lin Ft
115	680 SW 7 St	10 Lin Ft
116	530 SW 7 St	15 Lin Ft
117	720 SW 7 St	10 Lin Ft
118	570 SW 6 St	10 Lin Ft
119	578 SW 6 St	15 Lin Ft
120	445 SW 3 Ave	20 Lin Ft
121	687 SW 6 Ter	15 Lin Ft
122	332 SW 3 Ave	15 Lin Ft
123	639 SW 3 Ter	15 Lin Ft
124	787 SW 3 Ter	10 Lin Ft
125	435 SW 6 Ct	10 Lin Ft
126	615 SW 8 Ave	15 Lin Ft
127	515 SW 8 Ave	15 Lin Ft
128	305 SW 8 Ave	10 Lin Ft
129	SW 2 St bet 884/9 Ave	125 Lin Ft
130	SW 9 Ave bet 4 Terr/5 St	340 Lin Ft
131	SW 5 St bet 9 Ave/872	150 Lin Ft
132	SW 8 Ave bet 5 St/425	280 Lin Ft
133	SW 7 St bet 8 Ave/7 Ave	550 Lin Ft

134	SW 7 Ave bet 6 Terr/7 St	150 Lin Ft
135	SW 6 Terr bet 7 Ave/758	250 Lin Ft
136	SW 7 Ct bet 556/5Terr	575 Lin Ft
137	SW 7 Ct bet 5 St/4 St	580 Lin Ft
138	SW 5 St bet 7 Ct/8 Ave	460 Lin Ft
139	SW 7 Ct bet 5 St/406	150 Lin Ft
140	SW 7 Ave bet 3 Terr/5 St	550 Lin Ft
141	SW 7 Ave bet 5 St/5 Terr	475 Lin Ft
142	SW 5 Terr bet 7 Ave 7 Ct	150 Lin Ft
143	SW 4 St bet 5 Ave/3 Ave	1250 Lin Ft
144	SW 3 Ave bet 1 St/3 St	2150 Lin Ft
145	Krome Ave bet SW 9 St/336 St	<u>5280 Lin Ft</u>
146	Sub-Total Lin Ft SW (b)	15100 Lin Ft
147		
148	Total Lin Ft Sidewalks (a+b)	16655 Lin Ft
149		

150 Note 1: all sidewalks are 5 Ft wide

151 Note 2: all sidewalks were measured with a 12"

152 wheel Lufkin HI-Viz WW38

153 Note 3: Prepared by Eugene Leon, City Project Manager

### **Section 3: Scope of Work**

This project will be managed by the City's Project Manager, Gene Leon, with assistance from the City's Engineer, Pedro Gonzalez. As shown in Section 10, the City has solid experience in managing sidewalk improvements and thus the design plans for standard sidewalk construction are already completed and tested on prior projects. The proposed scope of work is provided below.

#### **Task 1: Grant Agreement**

City staff will work with the FDOT and TPO to finalize and execute the grant agreement, and designate the FDOT Grant Coordinator for the project

#### **Task 2: Contractor Selection**

The City will advertise the project for contractor selection consistent with State purchasing procedures for services. The Mayor, City Engineer and Project Manager will form the selection committee.

#### **Task 3: Building Permits**

The contractor selected will obtain a general building permit for groups of related sidewalk links in coordination with the City's Building Official.

#### **Task 4: Construction**

The contractor will mobilize the necessary equipment and personnel to start and sustain construction through the project period. This task is expected to last for a major portion of the grant period.

#### **Task 5: Inspections**

City building inspectors will inspect and approve each sidewalk link when completed. The City Engineer will also perform periodic inspections of completed portions of the project.

#### **Task 6: Project Completion**

When all sidewalk links completed, the City Engineer will perform an overall final inspection and issue a report. The report will be forwarded to the Grant Coordinator for review and approval. Once approval is obtained, the grant will be closed out.

## Section 4: Project Implementation Plan

### Schedule

The project schedule is provided below.

<u>Task</u>	<u>Completion (from NTP*)</u>
1. Grant Agreement	60 days
2. Contractor Selection	180 days
3. Building Permits	180 to 1,035 days
4. Construction	240 to 1,035 days
5. Inspection	300 to 1,035 days
6. Project Completion	1,035 to 1,095 days

\* Notice-to-Proceed.

### Project Permits

The contractor will be responsible for obtaining project permits for each sidewalk link. In most cases, this will only involve the City's Building Division. However, the sidewalks on Krome Avenue (SW 177<sup>th</sup> Avenue) will require approval from Miami-Dade County.

**Section 5: Environmental Evaluation**

City staff has conducted an environmental assessment of the proposed sidewalk links and found no wetland, native habitat or other environmental issues.



## **Section 6: Right of Way Evaluation**

As discussed previously, necessary public right-of way under the construction of the 143 sidewalk links is already in place. No additional right-of-way will be needed.

**Section 7: Opinion of Probable Cost**

An opinion of probable cost, prepared by the City Engineer is attached in this section.

**CONSTRUCTION COST ESTIMATE SIDEWALK IMPROVEMENTS FLORIDA CITY**

Sidewalk Location	Length, FT	Unit Price, \$/FT	Sub-Total Cost
<b>NW Area</b>			
1060 NW 9 AVE	10	\$55.00	\$550
1050 NW 9 AVE	10	\$55.00	\$550
1469 NW 8 AVE	15	\$55.00	\$825
409 NW 15 ST	15	\$55.00	\$825
545 NW 15 ST	15	\$55.00	\$825
562 NW 15 ST	10	\$55.00	\$550
589 NW 15 ST	10	\$55.00	\$550
578 NW 14 ST	10	\$55.00	\$550
590 NW 14 ST	15	\$55.00	\$825
523 NW 14 ST	10	\$55.00	\$550
533 NW 14 ST	10	\$55.00	\$550
645 NW 14 ST	10	\$55.00	\$550
691 NW 14 ST	15	\$55.00	\$825
500 NW 14 ST	15	\$55.00	\$825
475 NW 14 ST	15	\$55.00	\$825
305 NW 5 AVE	15	\$55.00	\$825
329 NW 5 AVE	15	\$55.00	\$825
1330 NW 5 AVE	10	\$55.00	\$550
1312 NW 5 AVE	15	\$55.00	\$825
1305 NW 5 AVE	10	\$55.00	\$550
1421 NW 5 AVE	10	\$55.00	\$550
1413 NW 5 AVE	10	\$55.00	\$550
1513 NW 5 AVE	15	\$55.00	\$825
650 NW 5 AVE	15	\$55.00	\$825
1622 NW 5 AVE	5	\$55.00	\$275
1514 NW 5 AVE	15	\$55.00	\$825
650 NW 5 AVE	15	\$55.00	\$825

**CONSTRUCTION COST ESTIMATE SIDEWALK IMPROVEMENTS FLORIDA CITY**

Sidewalk Location	Length, FT	Unit Price, \$/FT	Sub-Total Cost
521 NW 16 ST	10	\$55.00	\$550
539 NW 16 ST	10	\$55.00	\$550
538 NW 16 ST	5	\$55.00	\$275
441 NW 16 ST	10	\$55.00	\$550
450 NW 16 ST	10	\$55.00	\$550
950 NW 16 ST	10	\$55.00	\$550
440 NW 16 ST	10	\$55.00	\$550
421 LUCY ST	10	\$55.00	\$550
545 LUCY ST	55	\$55.00	\$3,025
221 NW 3 AVE	15	\$55.00	\$825
241 NW 3 AVE	10	\$55.00	\$550
410 NW 15 ST	5	\$55.00	\$275
409 NW 15 ST	5	\$55.00	\$275
432 NW 15 ST	5	\$55.00	\$275
440 NW 15 ST	5	\$55.00	\$275
406 NW 14 ST	10	\$55.00	\$550
729 NW 12 ST	15	\$55.00	\$825
225 NW 12 ST	5	\$55.00	\$275
570 NW 12 ST	10	\$55.00	\$550
1055 NW 6 AVE	20	\$55.00	\$1,100
746 NW 7 CT	10	\$55.00	\$550
715 NW 8 AVE	10	\$55.00	\$550
706 NW 8 AVE	75	\$55.00	\$4,125
336 NW 8 AVE	10	\$55.00	\$550
426 NW 8 AVE	5	\$55.00	\$275
715 NW 10 ST	10	\$55.00	\$550
705 NW 9 AVE	50	\$55.00	\$2,750
745 NW 9 AVE	15	\$55.00	\$825

**CONSTRUCTION COST ESTIMATE SIDEWALK IMPROVEMENTS FLORIDA CITY**

Sidewalk Location	Length, FT	Unit Price, \$/FT	Sub-Total Cost
426 NW 9 PL	15	\$55.00	\$825
706 NW 8 CT	45	\$55.00	\$2,475
705 NW 8 CT	65	\$55.00	\$3,575
916 NW 8 ST	25	\$55.00	\$1,375
950 NW 8 ST	40	\$55.00	\$2,200
937 NW 10 ST	30	\$55.00	\$1,650
923 NW 10 ST	5	\$55.00	\$275
853 NW 3 ST	10	\$55.00	\$550
390 NW 3 ST	25	\$55.00	\$1,375
373 NW 3 ST	45	\$55.00	\$2,475
352 NW 3 ST	10	\$55.00	\$550
780 NW 5 ST	10	\$55.00	\$550
445 NW 9 PL	20	\$55.00	\$1,100
906 NW 4 TER	35	\$55.00	\$1,925
906 NW 4 LA	15	\$55.00	\$825
763 DAVIS PKWY	15	\$55.00	\$825
NW 3 AVE BET 2/3 ST	375	\$55.00	\$20,625
865 DAVIS PKWY	15	\$55.00	\$825
<b>Total NW Area</b>	<b>1,555</b>		<b>\$85,525</b>

**CONSTRUCTION COST ESTIMATE SIDEWALK IMPROVEMENTS FLORIDA CITY**

Sidewalk Location	Length, FT	Unit Price, \$/FT	Sub-Total Cost
<b>SW Area</b>			
537 SW 2 ST	15	\$55.00	\$825.00
302 SW 3 ST	15	\$55.00	\$825.00
304 SW 3 ST	5	\$55.00	\$275.00
310 SW 3 ST	15	\$55.00	\$825.00
305 SW 3 ST	10	\$55.00	\$550.00
327 SW 3 ST	10	\$55.00	\$550.00
328 SW 3 ST	5	\$55.00	\$275.00
336 SW 3 ST	15	\$55.00	\$825.00
344 SW 3 ST	10	\$55.00	\$550.00
353 SW 3 ST	5	\$55.00	\$275.00
639 SW 3 ST	15	\$55.00	\$825.00
409 SW 3 ST	30	\$55.00	\$1,650.00
569 SW 3 ST	5	\$55.00	\$275.00
577 SW 3 ST	10	\$55.00	\$550.00
305 SW 5 AVE	70	\$55.00	\$3,850.00
348 SW 5 AVE	25	\$55.00	\$1,375.00
130 SW 5 AVE	30	\$55.00	\$1,650.00
146 SW 5 AVE	45	\$55.00	\$2,475.00
220 SW 5 AVE	15	\$55.00	\$825.00
305 SW 5 AVE	10	\$55.00	\$550.00
421 SW 5 AVE	50	\$55.00	\$2,750.00
505 SW 5 AVE	15	\$55.00	\$825.00
529 SW 5 AVE	15	\$55.00	\$825.00
535 SW 5 AVE	35	\$55.00	\$1,925.00
540 SW 5 AVE	20	\$55.00	\$1,100.00
545 SW 5 AVE	10	\$55.00	\$550.00
305 SW 6 AVE	35	\$55.00	\$1,925.00

**CONSTRUCTION COST ESTIMATE SIDEWALK IMPROVEMENTS FLORIDA CITY**

Sidewalk Location	Length, FT	Unit Price, \$/FT	Sub-Total Cost
546 SW 6 AVE	20	\$55.00	\$1,100.00
687 SW 7 AVE	15	\$55.00	\$825.00
240 SW 8 AVE	20	\$55.00	\$1,100.00
545 SW 5 ST	10	\$55.00	\$550.00
546 SW 5 ST	10	\$55.00	\$550.00
565 SW 5 ST	5	\$55.00	\$275.00
577 SW 5 ST	15	\$55.00	\$825.00
615 SW 5 ST	50	\$55.00	\$2,750.00
625 SW 5 ST	35	\$55.00	\$1,925.00
675 SW 5 ST	15	\$55.00	\$825.00
726 SW 5 ST	15	\$55.00	\$825.00
723 SW 5 ST	15	\$55.00	\$825.00
680 SW 7 ST	10	\$55.00	\$550.00
530 SW 7 ST	15	\$55.00	\$825.00
720 SW 7 ST	10	\$55.00	\$550.00
570 SW 6 ST	10	\$55.00	\$550.00
578 SW 6 ST	15	\$55.00	\$825.00
445 SW 3 AVE	20	\$55.00	\$1,100.00
687 SW 6 TER	15	\$55.00	\$825.00
332 SW 3 AVE	15	\$55.00	\$825.00
639 SW 3 TER	15	\$55.00	\$825.00
787 SW 3 TER	10	\$55.00	\$550.00
435 SW 6 CT	10	\$55.00	\$550.00
615 SW 8 AVE	15	\$55.00	\$825.00
515 SW 8 AVE	15	\$55.00	\$825.00
305 SW 8 AVE	10	\$55.00	\$550.00
SW 2 ST BET 884/9 AVE	125	\$55.00	\$6,875.00
SW 9 AVE BET 4 TER/5 ST	340	\$55.00	\$18,700.00

CONSTRUCTION COST ESTIMATE SIDEWALK IMPROVEMENTS FLORIDA CITY			
Sidewalk Location	Length, FT	Unit Price, \$/FT	Sub-Total Cost
SW 5 ST BET 9 AVE/872	150	\$55.00	\$8,250.00
SW 8 SVE BET 5 ST/425	280	\$55.00	\$15,400.00
SW 7 ST BET 8 AVE/7 AVE	550	\$55.00	\$30,250.00
SW 7 AVE BET 6 TERR/7 ST	150	\$55.00	\$8,250.00
SW 7 AVE BET 5 TERR/6 TERR	250	\$55.00	\$13,750.00
SW 6 TERR BET 7 AVE/758	250	\$55.00	\$13,750.00
SW 7 CT BET 556 TERR/5 TERR	575	\$55.00	\$31,625.00
SW 7 CT BET 5 ST/4 ST	580	\$55.00	\$31,900.00
SW 5 ST BET 7 CT/8 AVE	460	\$55.00	\$25,300.00
SW 7 CT BET 5 ST/406	150	\$55.00	\$8,250.00
SW 7 AVE BET 3 TERR/5 ST	550	\$55.00	\$30,250.00
SW 7 AVE BET 5 ST/5 TERR	475	\$55.00	\$26,125.00
SW 5 TERR BET 7 AVE 7 CT	150	\$55.00	\$8,250.00
SW 4 ST BET 5 AVE/3 AVE	1250	\$55.00	\$68,750.00
SW 3 AVE BET 1 ST/3 ST	2150	\$55.00	\$118,250.00
KROME AVE BET SW 9 ST/336 ST	5280	\$55.00	\$290,400.00
<b>Totals SW Area</b>	<b>14,665</b>		<b>\$806,575.00</b>
<b>Total Cost Sidewalk Improvements</b>			<b>\$892,100.00</b>
Notes:			
1. Includes the price for sidewalk construction/restoration in the public right of way of Florida City.			
2. The unit price for sidewalk improvements used for this estimate corresponds to the most recent unit price for bond estimates of subdivision improvements in Florida City.			
I, Pedro Delfin Gonzalez, P.E., City Engineer of Florida City certify to the best of my knowledge that the costs presented above are accurate for construction estimation purposes.			

**Pedro D. Gonzalez, P.E.**  
 Digitally signed by Pedro D. Gonzalez, P.E.  
 DN: cn=Pedro D. Gonzalez, P.E., o=Baljet Environmental, Inc., ou, email=pgonzalez@baljet.com, c=US  
 Date: 2022.02.17 13:21:49 -05'00'



**Section 8: Local Agency Funding Contribution**

The City proposes to contribute 25% of the total project cost from local funds. This would total \$223,025.

**Section 9: LAP Certification Status**

The City will be the project sponsor and will enter into a Local Agency Program (LAP) Agreement with FDOT if selected, prior to the initiation of the scope of work.

## **Section 10: Past Performance**

### **Procurement**

The City has long and successful experience in procuring services for a wide-range of municipal projects. Attached in this section is a list of the 18 sidewalk projects completed since 2018, totaling 11,721 linear feet.

### **Project Management**

The Public Works Department has worked hand-in-hand with City Administration and Building Division to complete the 18 sidewalk projects listed herein and many other City construction projects. This includes effective management of the contractor and on-site work, and processing of valid change orders. Construction management is coordinated by the City's Project Manager and City Engineer.

### **Invoicing**

The City processes and approves all contractor invoices for work completed, checking the quality and extent of work done in the field, and the personnel hours and quantities shown on each invoice. Approved invoices are paid within 30 days. Invoices will also be sent to the FDOT Grant Coordinator.

City of Florida City  
Sidewalk Improvements

16 Feb 2022

91

Ln	Contractor's Name	Location	Qty-LinFt	Amount \$	Completion Date
1	HG Construction	NW 5 Ave/Roberts Park	1129	\$ 21,713.00	Dec 2021
2	Roadway Construction	East Plm Dr-SW 344 St	3596	\$ 72,723.00	Jul 2021
3	Maggolc Inc	NW 1 and 2 St frm NW			
4		e Ave to NW 7 Ave	968	\$ 22,924.00	Sep2019
5	Weekley Asphalt Paving	SW 1 St from SW 2 Ave			
7		to SW 3 Ave/NW 3 Ave			
8		, NW 4 Sve & NW 6 Ave	3004	\$ 21,683.00	Apr 2018
9	Tequesta Const Services	SW 7 St at 5,6,7 Ave	265	\$ 8,625.00	Oct 2020
10	Tequesta Const Services	SW 5 Ave/5 St	849	\$ 16,520.00	Sep 2020
11	Tequesta Const Services	NW 6 Ave/1 St	36	\$ 1,950.00	Dec 2020
12	Coast to Coast Concrete	NW 8 Ave/14 St	37	\$ 2,200.00	Feb 2021
13	Tequesta Const Services	NW 9 St/3 La	50	\$ 2,875.00	Mar 2021
14	Tequesta Const Services	SW 4 Ave/1 St	35	\$ 1,875.00	Mar 2021
15	Coast to Coast Concrete	SW 6 Ave/7St	60	\$ 4,500.00	Apr 2021
16	Tequesta Const Services	SW 6 St/3 Ave	85	\$ 3,294.00	Mar 2021
17	Coast to Coast Concrete	NW 6 Ave/Davis Pkwy	400	\$ 9,000.00	Jul 2021
18	Tequesta Const Services	NW 7 Ave/3 St	950	\$ 7,125.00	Jul 2021
19	Tequesta Const Services	NW 7 Ave/3 Terr	72	\$ 3,425.00	Jul 2021
20	Tequesta Const Services	715-775 NW Terr	105	\$ 7,140.00	Nov 2021
21	Tequesta Const Services	SW 8 St/6 Ave	80	\$ 4,680.00	Jan 2022
22					
23					
24					



## **Florida Department of Transportation District VI**

### **"2022 Transportation Alternatives Application"**



**Submitted By: The City of Florida City**

**February 18, 2022**

**TABLE OF CONTENTS**

	<u>Page No.</u>
Section 1: Letter of Transmittal.....	2
Section 2: Project Description.....	3
Section 3: Scope of Work.....	5
Section 4: Project Implementation Plan.....	6
Section 5: Environmental Evaluation.....	7
Section 6: Right of Way Evaluation.....	8
Section 7: Opinion of Probable Cost.....	9
Section 8: Local Agency Funding Contribution.....	10
Section 9: LAP Certification Status.....	11
Section 10: Past Performance.....	12

**Section 1: Letter of Transmittal**

The letter of transmittal is attached herein.



## Office of the Mayor

February 18, 2022

Franchesca Taylor, AICP, ENV SP  
MDC Transportation Planning Organization  
150 West Flagler Street, Suite 1900  
Miami, Florida 33130

Re: Transportation Alternatives 2022 Application Cycle

Dear Ms. Taylor:

It is with great pleasure that I am able to submit the enclosed application for the transportation alternatives 2022 application cycle on behalf of the City of Florida City. The application describes the planned City Sidewalk Improvement Program to build and replace 3.1 miles of sidewalk links in the City. Florida City is one of the poorest communities in the State and suffers from an inordinate amount of discontinuous sidewalks. This hinders residents from accessing the City's Busway transit station and stops, as well as, students biking and/or walking to Florida City Elementary School.

This project, which enjoys widespread community support, solidly meets all of the grant evaluation criteria as summarized below.

- \* Improves safety and mobility in the City for bicycle riders and pedestrians, including school children.
- \* Substantially enhance access to the three (3) existing and planned Busway stations in the City which are part of the County's SMART Plan.
- \* Significantly increase mobility for disadvantaged groups such as the elderly, children and the poor. The City has one of the lowest resident auto ownership ratios and thus transit, bicycling and walking are the primary modes of transportation.
- \* The City is proposing to contribute 25% of the project cost from local funds.
- \* Quality of life will be greatly enhanced in the northwest and southwest neighborhoods including better air quality, public safety and reduced vehicle trips.



FDOT Transportation Alternatives Cycle  
February 18, 2022  
Page 2

Don't hesitate to contact Henry Iler, the City's Planner (email: [henry@ilerplanning.com](mailto:henry@ilerplanning.com)), if you have any questions regarding our application or need additional information.

Thank you,

A handwritten signature in blue ink that reads "Otis T. Wallace". The signature is written in a cursive style.

Otis T. Wallace  
Mayor

cc. Henry Iler, AICP  
Florida City Planner

## **Section 2: Project Description**

The Florida City Sidewalk Improvement Program involves the construction of approximately 3.1 miles of new sidewalks within the City's northwest (NW) and southwest (SW) neighborhoods. The map attached in this section shows these two (2) neighborhood areas. The sidewalk project is scheduled to be completed within a three (3) year timeframe. A cost estimate is provided in Section 7 by the City Engineer showing a total project cost of \$892,100.

### **Sidewalk Assessment**

In recent months, City Public Works staff have conducted a comprehensive on-the-ground assessment of the sidewalk systems in the NW and SW areas. These areas were selected because they comprise the historic City neighborhoods containing the large majority of the population. The assessment was conducted using a standard field measuring wheel and each of the 143 links measured was referenced to the nearest street address for location purposes. Many of the links have no sidewalk but some involve the replacement of substantially damaged existing sidewalks. The list of the links identified and the length of each is attached in this section in a 5-page document prepared by the City's Project Manager, Eugene Leon. It shows the length of new and replacement sidewalks in the improvement program as follows:

- \* NW Area: 1,555 linear feet
- \* SW Area: 15,100 linear feet
- Total: 16,655 linear feet

All of the public right-of-way required for this project is in place; no additional right-of-way will be needed.

### **Area Transit Stations and School**

Looking at the attached map, it identifies the NW and SW Areas, as mentioned before, and also shows the three (3) transit stations and stops along the Miami-Dade County Busway which traverses the NW Area and ends at West Palm Drive on the edge of the SW Area. In addition, the map identifies the location of Florida City Elementary School on NW 6<sup>th</sup> Avenue in the NW Area.

### **Project Meets Grant Criteria**

This project fully complies with the grant evaluation criteria of the FDOT and TPO. It will greatly improve safety in the City for bicycle riders and pedestrians of all ages. The new sidewalk connections will substantially enhance access to the three (3) Busway stations in the City which are part of the County's SMART Plan.

Florida City is one of the poorest cities in the State with a poverty rate of 40% according to the most recent Census figures. By comparison, the poverty rate in the State of Florida is 12% and Miami-Dade County 15%. A large portion of the NW Area is designated as a

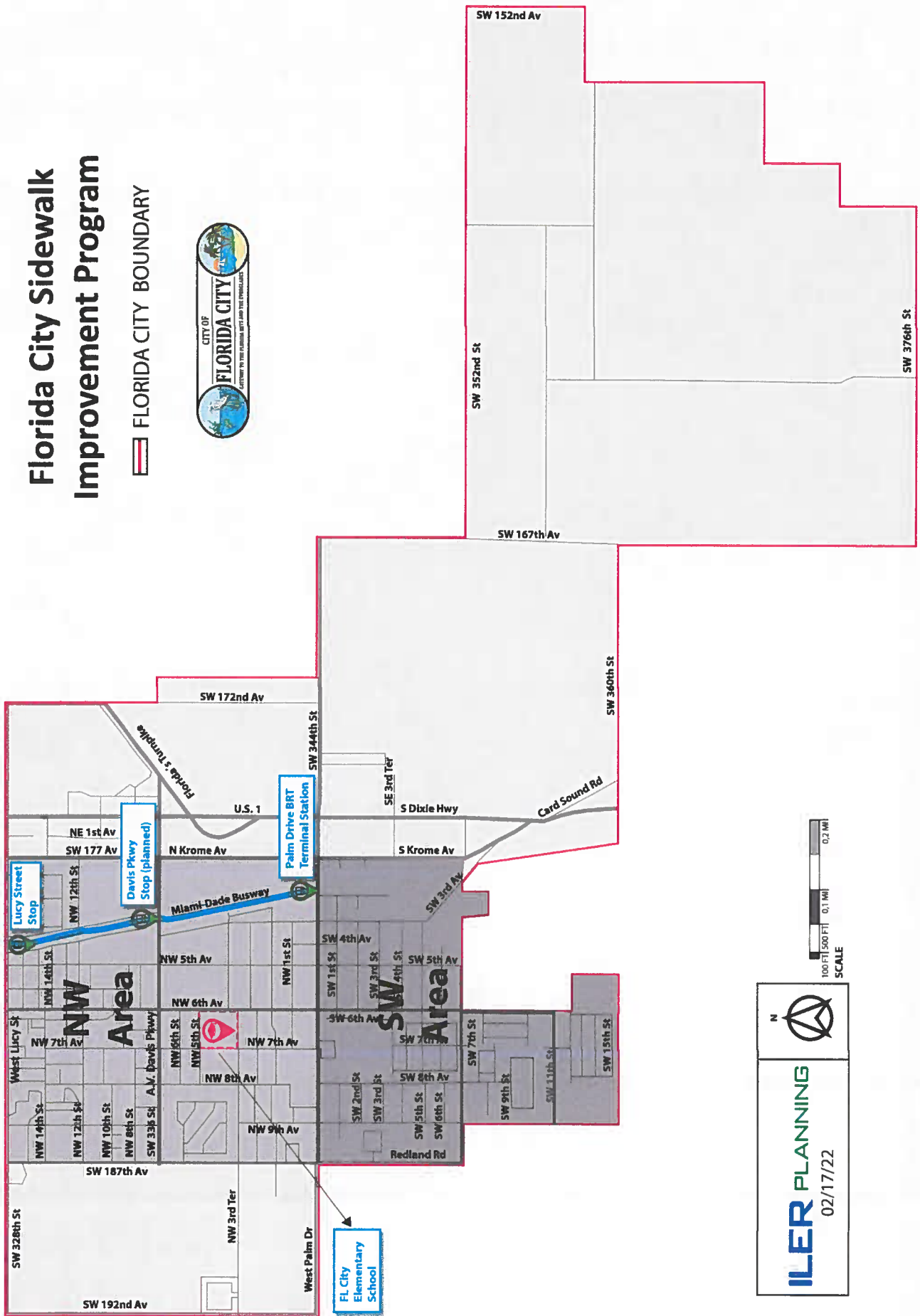
Community Development Block Grant (CDBG) area and the City's Community Redevelopment Agency (CRA) area boundary includes both the NW and SW Areas. The City also has a large number of disabled residents comprising 15% of the population. As with many poorer communities, Florida City exhibits a very low rate of resident auto ownership thus transit, bicycling and walking are very important modes of transportation. It was mentioned previously that Florida City Elementary School is located in the improvement area and it should be noted many kids attend this school from both the NW and SW Areas. These new sidewalks will significantly increase mobility and safety for disadvantaged groups such as the elderly, children and the poor.

The proposed Sidewalk Improvement Program will be greatly enhance the quality of life in the City's NW and SW neighborhoods including better air quality, public safety and reduced use of automobiles. This program has widespread community support and the full endorsement of the Florida City City Commission.

To show its commitment to this project, the City is proposing to contribute 25% of the project cost from local funds.

# Florida City Sidewalk Improvement Program

FLORIDA CITY BOUNDARY



  
**ILER PLANNING**  
 02/17/22

CITY OF FLORIDA CITY  
Damaged/Missing Sidewalks

15 Feb 2022

gl

Ln	Nearest Address - Location	Length
1	1060 NW 9 Ave	10 Lin Ft
2	1050 NW 9 Ave	10 Lin Ft
3	1469 NW 8 Ave	15 Lin Ft
4	409 NW 15 St	15 Lin Ft
5	545 NW 15 St	15 Lin Ft
6	562 NW 15 St	10 Lin Ft
7	589 NW 15 St	10 Lin Ft
8	578 NW 14 St	10 Lin Ft
9	590 NW 14 St	15 Lin Ft
10	523 NW 14 St	10 Lin Ft
11	533 NW 14 St	10 Lin Ft
12	645 NW 14 St	10 Lin Ft
13	691 NW 14 St	15 Lin Ft
14	500 NW 14 St	15 Lin Ft
15	475 NW 14 St	15 Lin Ft
16	305 NW 5 Ave	15 Lin Ft
17	329 NW 5 Ave	15 Lin Ft
18	1330 NW 5 Ave	10 Lin Ft
19	1312 NW 5 Ave	15 Lin Ft
20	1305 NW 5 Ave	10 Lin Ft
21	1421 NW 5 Ave	10 Lin Ft
22	1413 NW 5 Ave	10 Lin Ft
23	1513 NW 5 Ave	15 Lin Ft
24	650 NW 5 Ave	15 Lin Ft
25	1622 NW 5 Ave	5 Lin Ft
26	1514 NW 5 Ave	15 Lin Ft
27	650 NW 5 Ave	15 Lin Ft
28	521 NW 16 St	10 Lin Ft
29	539 NW 16 St	10 Lin Ft
30	538 NW 16 St	5 Lin Ft
31	441 NW 16 St	10 Lin Ft

32	450 NW 16 St	10 Lin Ft
33	950 NW 16 St	10 Lin Ft
34	440 NW 16 St	10 Lin Ft
35	421 Lucy St	10 Lin Ft
36	545 Lucy St	55 Lin Ft
37	221 NW 3 Ave	15 Lin Ft
38	241 NW 3 Ave	10 Lin Ft
39	NW 3 Ave bet 2/3 St	375 Lin Ft
40	410 NW 15 St	5 Lin Ft
41	409 NW 15 St	5 Lin Ft
42	432 NW 15 St	5 Lin Ft
43	440 NW 15 St	5 Lin Ft
44	406 NW 14 St	10 Lin Ft
45	729 NW 12 St	15 Lin Ft
46	225 NW 12 St	5 Lin Ft
47	570 NW 12 St	10 Lin Ft
48	1055 NW 6 Ave	20 Lin Ft
49	746 NW 7 Ct	10 Lin Ft
50	715 NW 8 Ave	10 Lin Ft
51	706 NW 8 Ave	75 Lin Ft
52	336 NW 8 Ave	10 Lin Ft
53	426 NW 8 Ave	5 Lin Ft
54	715 NW 10 St	10 Lin Ft
55	705 NW 9 Ave	50 Lin Ft
56	745 NW 9 Ave	15 Lin Ft
57	426 NW 9 Pl	15 Lin Ft
58	706 NW 8 Ct	45 Lin Ft
59	705 NW 8 Ct	65 Lin Ft
60	916 NW 8 St	25 Lin Ft
61	950 NW 8 St	40 Lin Ft
62	937 NW 10 St	30 Lin Ft
63	923 NW 10 St	5 Lin Ft
64	853 NW 3 St	10 Lin Ft
65	390 NW 3 St	25 Lin Ft

66	373 NW 3 St	45 Lin Ft
67	352 NW 3 St	10 Lin Ft
68	780 NW 5 St	10 Lin Ft
69	445 NW 9 Pl	20 Lin Ft
70	906 NW 4 Ter	35 Lin Ft
71	906 NW 4 La	15 Lin Ft
72	763 Davis Pkwy	15 Lin Ft
73	865 Davis Pkwy	<u>15 Lin Ft</u>
74	Sub-Total Lin Ft NW (a)	1555 Lin Ft
75		
76	537 SW 2 St	15 Lin Ft
77	302 SW 3 St	15 Lin Ft
78	304 SW 3 St	5 Lin Ft
79	310 SW 3 St	15 Lin Ft
80	305 SW 3 St	10 Lin Ft
81	327 SW 3 St	10 Lin Ft
82	328 SW 3 St	5 Lin Ft
83	336 SW 3 St	15 Lin Ft
84	344 SW 3 St	10 Lin Ft
85	353 SW 3 St	5 Lin Ft
86	639 SW 3 St	15 Lin Ft
87	409 SW 3 St	30 Lin Ft
88	569 SW 3 St	5 Lin Ft
89	577 SW 3 St	10 Lin Ft
90	305 SW 5 Ave	70 Lin Ft
91	348 SW 5 Ave	25 Lin Ft
92	130 SW 5 Ave	30 Lin Ft
93	146 SW 5 Ave	45 Lin Ft
94	220 SW 5 Ave	15 Lin Ft
95	305 SW 5 Ave	10 Lin Ft
96	421 SW 5 Ave	50 Lin Ft
97	505 SW 5 Ave	15 Lin Ft
98	529 SW 5 Av	15 Lin Ft
99	535 SW 5 Ave	35 Lin Ft

100	540 SW 5 Ave	20 Lin Ft
101	545 SW 5 Ave	10 Lin Ft
102	305 SW 6 Ave	35 Lin Ft
103	546 SW 6 Ave	20 Lin Ft
104	687 SW 7 Ave	15 Lin Ft
105	240 SW 8 Ave	20 Lin Ft
106	545 SW 5 St	10 Lin Ft
107	546 SW 5 St	10 Lin Ft
108	565 SW 5 St	5 Lin Ft
109	577 SW 5 St	15 Lin Ft
110	615 SW 5 St	50 Lin Ft
111	625 SW 5 St	35 Lin Ft
112	675 SW 5 St	15 Lin Ft
113	726 SW 5 St	15 Lin Ft
114	723 SW 5 St	15 Lin Ft
115	680 SW 7 St	10 Lin Ft
116	530 SW 7 St	15 Lin Ft
117	720 SW 7 St	10 Lin Ft
118	570 SW 6 St	10 Lin Ft
119	578 SW 6 St	15 Lin Ft
120	445 SW 3 Ave	20 Lin Ft
121	687 SW 6 Ter	15 Lin Ft
122	332 SW 3 Ave	15 Lin Ft
123	639 SW 3 Ter	15 Lin Ft
124	787 SW 3 Ter	10 Lin Ft
125	435 SW 6 Ct	10 Lin Ft
126	615 SW 8 Ave	15 Lin Ft
127	515 SW 8 Ave	15 Lin Ft
128	305 SW 8 Ave	10 Lin Ft
129	SW 2 St bet 884/9 Ave	125 Lin Ft
130	SW 9 Ave bet 4 Terr/5 St	340 Lin Ft
131	SW 5 St bet 9 Ave/872	150 Lin Ft
132	SW 8 Ave bet 5 St/425	280 Lin Ft
133	SW 7 St bet 8 Ave/7 Ave	550 Lin Ft



134	SW 7 Ave bet 6 Terr/7 St	150 Lin Ft
135	SW 6 Terr bet 7 Ave/758	250 Lin Ft
136	SW 7 Ct bet 556/5Terr	575 Lin Ft
137	SW 7 Ct bet 5 St/4 St	580 Lin Ft
138	SW 5 St bet 7 Ct/8 Ave	460 Lin Ft
139	SW 7 Ct bet 5 St/406	150 Lin Ft
140	SW 7 Ave bet 3 Terr/5 St	550 Lin Ft
141	SW 7 Ave bet 5 St/5 Terr	475 Lin Ft
142	SW 5 Terr bet 7 Ave 7 Ct	150 Lin Ft
143	SW 4 St bet 5 Ave/3 Ave	1250 Lin Ft
144	SW 3 Ave bet 1 St/3 St	2150 Lin Ft
145	Krome Ave bet SW 9 St/336 St	<u>5280 Lin Ft</u>
146	Sub-Total Lin Ft SW (b)	15100 Lin Ft
147		
148	Total Lin Ft Sidewalks (a+b)	16655 Lin Ft
149		

150 Note 1: all sidewalks are 5 Ft wide

151 Note 2: all sidewalks were measured with a 12"

152 wheel Lufkin HI-Viz WW38

153 Note 3: Prepared by Eugene Leon, City Project Manager

### **Section 3: Scope of Work**

This project will be managed by the City's Project Manager, Gene Leon, with assistance from the City's Engineer, Pedro Gonzalez. As shown in Section 10, the City has solid experience in managing sidewalk improvements and thus the design plans for standard sidewalk construction are already completed and tested on prior projects. The proposed scope of work is provided below.

#### **Task 1: Grant Agreement**

City staff will work with the FDOT and TPO to finalize and execute the grant agreement, and designate the FDOT Grant Coordinator for the project

#### **Task 2: Contractor Selection**

The City will advertise the project for contractor selection consistent with State purchasing procedures for services. The Mayor, City Engineer and Project Manager will form the selection committee.

#### **Task 3: Building Permits**

The contractor selected will obtain a general building permit for groups of related sidewalk links in coordination with the City's Building Official.

#### **Task 4: Construction**

The contractor will mobilize the necessary equipment and personnel to start and sustain construction through the project period. This task is expected to last for a major portion of the grant period.

#### **Task 5: Inspections**

City building inspectors will inspect and approve each sidewalk link when completed. The City Engineer will also perform periodic inspections of completed portions of the project.

#### **Task 6: Project Completion**

When all sidewalk links completed, the City Engineer will perform an overall final inspection and issue a report. The report will be forwarded to the Grant Coordinator for review and approval. Once approval is obtained, the grant will be closed out.

## Section 4: Project Implementation Plan

### Schedule

The project schedule is provided below.

<u>Task</u>	<u>Completion (from NTP*)</u>
1. Grant Agreement	60 days
2. Contractor Selection	180 days
3. Building Permits	180 to 1,035 days
4. Construction	240 to 1,035 days
5. Inspection	300 to 1,035 days
6. Project Completion	1,035 to 1,095 days

\* Notice-to-Proceed.

### Project Permits

The contractor will be responsible for obtaining project permits for each sidewalk link. In most cases, this will only involve the City's Building Division. However, the sidewalks on Krome Avenue (SW 177<sup>th</sup> Avenue) will require approval from Miami-Dade County.

**Section 5: Environmental Evaluation**

City staff has conducted an environmental assessment of the proposed sidewalk links and found no wetland, native habitat or other environmental issues.

## **Section 6: Right of Way Evaluation**

As discussed previously, necessary public right-of way under the construction of the 143 sidewalk links is already in place. No additional right-of-way will be needed.

**Section 7: Opinion of Probable Cost**

An opinion of probable cost, prepared by the City Engineer is attached in this section.

**CONSTRUCTION COST ESTIMATE SIDEWALK IMPROVEMENTS FLORIDA CITY**

Sidewalk Location	Length, FT	Unit Price, \$/FT	Sub-Total Cost
<b>NW Area</b>			
1060 NW 9 AVE	10	\$55.00	\$550
1050 NW 9 AVE	10	\$55.00	\$550
1469 NW 8 AVE	15	\$55.00	\$825
409 NW 15 ST	15	\$55.00	\$825
545 NW 15 ST	15	\$55.00	\$825
562 NW 15 ST	10	\$55.00	\$550
589 NW 15 ST	10	\$55.00	\$550
578 NW 14 ST	10	\$55.00	\$550
590 NW 14 ST	15	\$55.00	\$825
523 NW 14 ST	10	\$55.00	\$550
533 NW 14 ST	10	\$55.00	\$550
645 NW 14 ST	10	\$55.00	\$550
691 NW 14 ST	15	\$55.00	\$825
500 NW 14 ST	15	\$55.00	\$825
475 NW 14 ST	15	\$55.00	\$825
305 NW 5 AVE	15	\$55.00	\$825
329 NW 5 AVE	15	\$55.00	\$825
1330 NW 5 AVE	10	\$55.00	\$550
1312 NW 5 AVE	15	\$55.00	\$825
1305 NW 5 AVE	10	\$55.00	\$550
1421 NW 5 AVE	10	\$55.00	\$550
1413 NW 5 AVE	10	\$55.00	\$550
1513 NW 5 AVE	15	\$55.00	\$825
650 NW 5 AVE	15	\$55.00	\$825
1622 NW 5 AVE	5	\$55.00	\$275
1514 NW 5 AVE	15	\$55.00	\$825
650 NW 5 AVE	15	\$55.00	\$825

**CONSTRUCTION COST ESTIMATE SIDEWALK IMPROVEMENTS FLORIDA CITY**

Sidewalk Location	Length, FT	Unit Price, \$/FT	Sub-Total Cost
521 NW 16 ST	10	\$55.00	\$550
539 NW 16 ST	10	\$55.00	\$550
538 NW 16 ST	5	\$55.00	\$275
441 NW 16 ST	10	\$55.00	\$550
450 NW 16 ST	10	\$55.00	\$550
950 NW 16 ST	10	\$55.00	\$550
440 NW 16 ST	10	\$55.00	\$550
421 LUCY ST	10	\$55.00	\$550
545 LUCY ST	55	\$55.00	\$3,025
221 NW 3 AVE	15	\$55.00	\$825
241 NW 3 AVE	10	\$55.00	\$550
410 NW 15 ST	5	\$55.00	\$275
409 NW 15 ST	5	\$55.00	\$275
432 NW 15 ST	5	\$55.00	\$275
440 NW 15 ST	5	\$55.00	\$275
406 NW 14 ST	10	\$55.00	\$550
729 NW 12 ST	15	\$55.00	\$825
225 NW 12 ST	5	\$55.00	\$275
570 NW 12 ST	10	\$55.00	\$550
1055 NW 6 AVE	20	\$55.00	\$1,100
746 NW 7 CT	10	\$55.00	\$550
715 NW 8 AVE	10	\$55.00	\$550
706 NW 8 AVE	75	\$55.00	\$4,125
336 NW 8 AVE	10	\$55.00	\$550
426 NW 8 AVE	5	\$55.00	\$275
715 NW 10 ST	10	\$55.00	\$550
705 NW 9 AVE	50	\$55.00	\$2,750
745 NW 9 AVE	15	\$55.00	\$825



**CONSTRUCTION COST ESTIMATE SIDEWALK IMPROVEMENTS FLORIDA CITY**

Sidewalk Location	Length, FT	Unit Price, \$/FT	Sub-Total Cost
426 NW 9 PL	15	\$55.00	\$825
706 NW 8 CT	45	\$55.00	\$2,475
705 NW 8 CT	65	\$55.00	\$3,575
916 NW 8 ST	25	\$55.00	\$1,375
950 NW 8 ST	40	\$55.00	\$2,200
937 NW 10 ST	30	\$55.00	\$1,650
923 NW 10 ST	5	\$55.00	\$275
853 NW 3 ST	10	\$55.00	\$550
390 NW 3 ST	25	\$55.00	\$1,375
373 NW 3 ST	45	\$55.00	\$2,475
352 NW 3 ST	10	\$55.00	\$550
780 NW 5 ST	10	\$55.00	\$550
445 NW 9 PL	20	\$55.00	\$1,100
906 NW 4 TER	35	\$55.00	\$1,925
906 NW 4 LA	15	\$55.00	\$825
763 DAVIS PKWY	15	\$55.00	\$825
NW 3 AVE BET 2/3 ST	375	\$55.00	\$20,625
865 DAVIS PKWY	15	\$55.00	\$825
<b>Total NW Area</b>	<b>1,555</b>		<b>\$85,525</b>

**CONSTRUCTION COST ESTIMATE SIDEWALK IMPROVEMENTS FLORIDA CITY**

Sidewalk Location	Length, FT	Unit Price, \$/FT	Sub-Total Cost
<b>SW Area</b>			
537 SW 2 ST	15	\$55.00	\$825.00
302 SW 3 ST	15	\$55.00	\$825.00
304 SW 3 ST	5	\$55.00	\$275.00
310 SW 3 ST	15	\$55.00	\$825.00
305 SW 3 ST	10	\$55.00	\$550.00
327 SW 3 ST	10	\$55.00	\$550.00
328 SW 3 ST	5	\$55.00	\$275.00
336 SW 3 ST	15	\$55.00	\$825.00
344 SW 3 ST	10	\$55.00	\$550.00
353 SW 3 ST	5	\$55.00	\$275.00
639 SW 3 ST	15	\$55.00	\$825.00
409 SW 3 ST	30	\$55.00	\$1,650.00
569 SW 3 ST	5	\$55.00	\$275.00
577 SW 3 ST	10	\$55.00	\$550.00
305 SW 5 AVE	70	\$55.00	\$3,850.00
348 SW 5 AVE	25	\$55.00	\$1,375.00
130 SW 5 AVE	30	\$55.00	\$1,650.00
146 SW 5 AVE	45	\$55.00	\$2,475.00
220 SW 5 AVE	15	\$55.00	\$825.00
305 SW 5 AVE	10	\$55.00	\$550.00
421 SW 5 AVE	50	\$55.00	\$2,750.00
505 SW 5 AVE	15	\$55.00	\$825.00
529 SW 5 AVE	15	\$55.00	\$825.00
535 SW 5 AVE	35	\$55.00	\$1,925.00
540 SW 5 AVE	20	\$55.00	\$1,100.00
545 SW 5 AVE	10	\$55.00	\$550.00
305 SW 6 AVE	35	\$55.00	\$1,925.00

**CONSTRUCTION COST ESTIMATE SIDEWALK IMPROVEMENTS FLORIDA CITY**

Sidewalk Location	Length, FT	Unit Price, \$/FT	Sub-Total Cost
546 SW 6 AVE	20	\$55.00	\$1,100.00
687 SW 7 AVE	15	\$55.00	\$825.00
240 SW 8 AVE	20	\$55.00	\$1,100.00
545 SW 5 ST	10	\$55.00	\$550.00
546 SW 5 ST	10	\$55.00	\$550.00
565 SW 5 ST	5	\$55.00	\$275.00
577 SW 5 ST	15	\$55.00	\$825.00
615 SW 5 ST	50	\$55.00	\$2,750.00
625 SW 5 ST	35	\$55.00	\$1,925.00
675 SW 5 ST	15	\$55.00	\$825.00
726 SW 5 ST	15	\$55.00	\$825.00
723 SW 5 ST	15	\$55.00	\$825.00
680 SW 7 ST	10	\$55.00	\$550.00
530 SW 7 ST	15	\$55.00	\$825.00
720 SW 7 ST	10	\$55.00	\$550.00
570 SW 6 ST	10	\$55.00	\$550.00
578 SW 6 ST	15	\$55.00	\$825.00
445 SW 3 AVE	20	\$55.00	\$1,100.00
687 SW 6 TER	15	\$55.00	\$825.00
332 SW 3 AVE	15	\$55.00	\$825.00
639 SW 3 TER	15	\$55.00	\$825.00
787 SW 3 TER	10	\$55.00	\$550.00
435 SW 6 CT	10	\$55.00	\$550.00
615 SW 8 AVE	15	\$55.00	\$825.00
515 SW 8 AVE	15	\$55.00	\$825.00
305 SW 8 AVE	10	\$55.00	\$550.00
SW 2 ST BET 884/9 AVE	125	\$55.00	\$6,875.00
SW 9 AVE BET 4 TER/5 ST	340	\$55.00	\$18,700.00

<b>CONSTRUCTION COST ESTIMATE SIDEWALK IMPROVEMENTS FLORIDA CITY</b>			
<b>Sidewalk Location</b>	<b>Length, FT</b>	<b>Unit Price, \$/FT</b>	<b>Sub-Total Cost</b>
SW 5 ST BET 9 AVE/872	150	\$55.00	\$8,250.00
SW 8 SVE BET 5 ST/425	280	\$55.00	\$15,400.00
SW 7 ST BET 8 AVE/7 AVE	550	\$55.00	\$30,250.00
SW 7 AVE BET 6 TERR/7 ST	150	\$55.00	\$8,250.00
SW 7 AVE BET 5 TERR/6 TERR	250	\$55.00	\$13,750.00
SW 6 TERR BET 7 AVE/758	250	\$55.00	\$13,750.00
SW 7 CT BET 556 TERR/5 TERR	575	\$55.00	\$31,625.00
SW 7 CT BET 5 ST/4 ST	580	\$55.00	\$31,900.00
SW 5 ST BET 7 CT/8 AVE	460	\$55.00	\$25,300.00
SW 7 CT BET 5 ST/406	150	\$55.00	\$8,250.00
SW 7 AVE BET 3 TERR/5 ST	550	\$55.00	\$30,250.00
SW 7 AVE BET 5 ST/5 TERR	475	\$55.00	\$26,125.00
SW 5 TERR BET 7 AVE 7 CT	150	\$55.00	\$8,250.00
SW 4 ST BET 5 AVE/3 AVE	1250	\$55.00	\$68,750.00
SW 3 AVE BET 1 ST/3 ST	2150	\$55.00	\$118,250.00
KROME AVE BET SW 9 ST/336 ST	5280	\$55.00	\$290,400.00
<b>Totals SW Area</b>	<b>14,665</b>		<b>\$806,575.00</b>
<b>Total Cost Sidewalk Improvements</b>			<b>\$892,100.00</b>
<b>Notes:</b>			
1. Includes the price for sidewalk construction/restoration in the public right of way of Florida City.			
2. The unit price for sidewalk improvements used for this estimate corresponds to the most recent unit price for bond estimates of subdivision improvements in Florida City.			
I, Pedro Delfin Gonzalez, P.E., City Engineer of Florida City certify to the best of my knowledge that the costs presented above are accurate for construction estimation purposes.			

**Pedro D. Gonzalez, P.E.**  
 Digitally signed by Pedro D. Gonzalez, P.E.  
 DN: cn=Pedro D. Gonzalez, P.E., o=Baljet Environmental, Inc., ou, email=pgonzalez@baljet.com, c=US  
 Date: 2022.02.17 13:21:49 -05'00'

**Section 8: Local Agency Funding Contribution**

The City proposes to contribute 25% of the total project cost from local funds. This would total \$223,025.

**Section 9: LAP Certification Status**

The City will be the project sponsor and will enter into a Local Agency Program (LAP) Agreement with FDOT if selected, prior to the initiation of the scope of work.

## **Section 10: Past Performance**

### **Procurement**

The City has long and successful experience in procuring services for a wide-range of municipal projects. Attached in this section is a list of the 18 sidewalk projects completed since 2018, totaling 11,721 linear feet.

### **Project Management**

The Public Works Department has worked hand-in-hand with City Administration and Building Division to complete the 18 sidewalk projects listed herein and many other City construction projects. This includes effective management of the contractor and on-site work, and processing of valid change orders. Construction management is coordinated by the City's Project Manager and City Engineer.

### **Invoicing**

The City processes and approves all contractor invoices for work completed, checking the quality and extent of work done in the field, and the personnel hours and quantities shown on each invoice. Approved invoices are paid within 30 days. Invoices will also be sent to the FDOT Grant Coordinator.

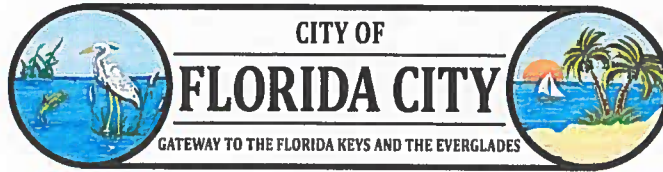
City of Florida City  
Sidewalk Improvements

16 Feb 2022

91

Ln	Contractor's Name	Location	Qty-LinFt	Amount \$	Completion Date
1	HG Construction	NW 5 Ave/Roberts Park	1129	\$ 21,713.00	Dec 2021
2	Roadway Construction	East Plm Dr-SW 344 St	3596	\$ 72,723.00	Jul 2021
3	Maggolc Inc	NW 1 and 2 St frm NW			
4		e Ave to NW 7 Ave	968	\$ 22,924.00	Sep2019
5	Weekley Asphalt Paving	SW 1 St from SW 2 Ave			
7		to SW 3 Ave/NW 3 Ave			
8		, NW 4 Sve & NW 6 Ave	3004	\$ 21,683.00	Apr 2018
9	Tequesta Const Services	SW 7 St at 5,6,7 Ave	265	\$ 8,625.00	Oct 2020
10	Tequesta Const Services	SW 5 Ave/5 St	849	\$ 16,520.00	Sep 2020
11	Tequesta Const Services	NW 6 Ave/1 St	36	\$ 1,950.00	Dec 2020
12	Coast to Coast Concrete	NW 8 Ave/14 St	37	\$ 2,200.00	Feb 2021
13	Tequesta Const Services	NW 9 St/3 La	50	\$ 2,875.00	Mar 2021
14	Tequesta Const Services	SW 4 Ave/1 St	35	\$ 1,875.00	Mar 2021
15	Coast to Coast Concrete	SW 6 Ave/7St	60	\$ 4,500.00	Apr 2021
16	Tequesta Const Services	SW 6 St/3 Ave	85	\$ 3,294.00	Mar 2021
17	Coast to Coast Concrete	NW 6 Ave/Davis Pkwy	400	\$ 9,000.00	Jul 2021
18	Tequesta Const Services	NW 7 Ave/3 St	950	\$ 7,125.00	Jul 2021
19	Tequesta Const Services	NW 7 Ave/3 Terr	72	\$ 3,425.00	Jul 2021
20	Tequesta Const Services	715-775 NW Terr	105	\$ 7,140.00	Nov 2021
21	Tequesta Const Services	SW 8 St/6 Ave	80	\$ 4,680.00	Jan 2022
22					
23					
24					





## **Florida Department of Transportation District VI**

### **"2022 Transportation Alternatives Application"**



**Submitted By: The City of Florida City**

**February 18, 2022**

**TABLE OF CONTENTS**

	<u>Page No.</u>
Section 1: Letter of Transmittal.....	2
Section 2: Project Description.....	3
Section 3: Scope of Work.....	5
Section 4: Project Implementation Plan.....	6
Section 5: Environmental Evaluation.....	7
Section 6: Right of Way Evaluation.....	8
Section 7: Opinion of Probable Cost.....	9
Section 8: Local Agency Funding Contribution.....	10
Section 9: LAP Certification Status.....	11
Section 10: Past Performance.....	12

**Section 1: Letter of Transmittal**

The letter of transmittal is attached herein.



## Office of the Mayor

February 18, 2022

Franchesca Taylor, AICP, ENV SP  
MDC Transportation Planning Organization  
150 West Flagler Street, Suite 1900  
Miami, Florida 33130

Re: Transportation Alternatives 2022 Application Cycle

Dear Ms. Taylor:

It is with great pleasure that I am able to submit the enclosed application for the transportation alternatives 2022 application cycle on behalf of the City of Florida City. The application describes the planned City Sidewalk Improvement Program to build and replace 3.1 miles of sidewalk links in the City. Florida City is one of the poorest communities in the State and suffers from an inordinate amount of discontinuous sidewalks. This hinders residents from accessing the City's Busway transit station and stops, as well as, students biking and/or walking to Florida City Elementary School.

This project, which enjoys widespread community support, solidly meets all of the grant evaluation criteria as summarized below.

- \* Improves safety and mobility in the City for bicycle riders and pedestrians, including school children.
- \* Substantially enhance access to the three (3) existing and planned Busway stations in the City which are part of the County's SMART Plan.
- \* Significantly increase mobility for disadvantaged groups such as the elderly, children and the poor. The City has one of the lowest resident auto ownership ratios and thus transit, bicycling and walking are the primary modes of transportation.
- \* The City is proposing to contribute 25% of the project cost from local funds.
- \* Quality of life will be greatly enhanced in the northwest and southwest neighborhoods including better air quality, public safety and reduced vehicle trips.

FDOT Transportation Alternatives Cycle  
February 18, 2022  
Page 2

Don't hesitate to contact Henry Iler, the City's Planner (email: [henry@ilerplanning.com](mailto:henry@ilerplanning.com)), if you have any questions regarding our application or need additional information.

Thank you,

A handwritten signature in blue ink that reads "Otis T. Wallace". The signature is written in a cursive style.

Otis T. Wallace  
Mayor

cc. Henry Iler, AICP  
Florida City Planner

## **Section 2: Project Description**

The Florida City Sidewalk Improvement Program involves the construction of approximately 3.1 miles of new sidewalks within the City's northwest (NW) and southwest (SW) neighborhoods. The map attached in this section shows these two (2) neighborhood areas. The sidewalk project is scheduled to be completed within a three (3) year timeframe. A cost estimate is provided in Section 7 by the City Engineer showing a total project cost of \$892,100.

### **Sidewalk Assessment**

In recent months, City Public Works staff have conducted a comprehensive on-the-ground assessment of the sidewalk systems in the NW and SW areas. These areas were selected because they comprise the historic City neighborhoods containing the large majority of the population. The assessment was conducted using a standard field measuring wheel and each of the 143 links measured was referenced to the nearest street address for location purposes. Many of the links have no sidewalk but some involve the replacement of substantially damaged existing sidewalks. The list of the links identified and the length of each is attached in this section in a 5-page document prepared by the City's Project Manager, Eugene Leon. It shows the length of new and replacement sidewalks in the improvement program as follows:

- \* NW Area: 1,555 linear feet
- \* SW Area: 15,100 linear feet
- Total: 16,655 linear feet

All of the public right-of-way required for this project is in place; no additional right-of-way will be needed.

### **Area Transit Stations and School**

Looking at the attached map, it identifies the NW and SW Areas, as mentioned before, and also shows the three (3) transit stations and stops along the Miami-Dade County Busway which traverses the NW Area and ends at West Palm Drive on the edge of the SW Area. In addition, the map identifies the location of Florida City Elementary School on NW 6<sup>th</sup> Avenue in the NW Area.

### **Project Meets Grant Criteria**

This project fully complies with the grant evaluation criteria of the FDOT and TPO. It will greatly improve safety in the City for bicycle riders and pedestrians of all ages. The new sidewalk connections will substantially enhance access to the three (3) Busway stations in the City which are part of the County's SMART Plan.

Florida City is one of the poorest cities in the State with a poverty rate of 40% according to the most recent Census figures. By comparison, the poverty rate in the State of Florida is 12% and Miami-Dade County 15%. A large portion of the NW Area is designated as a

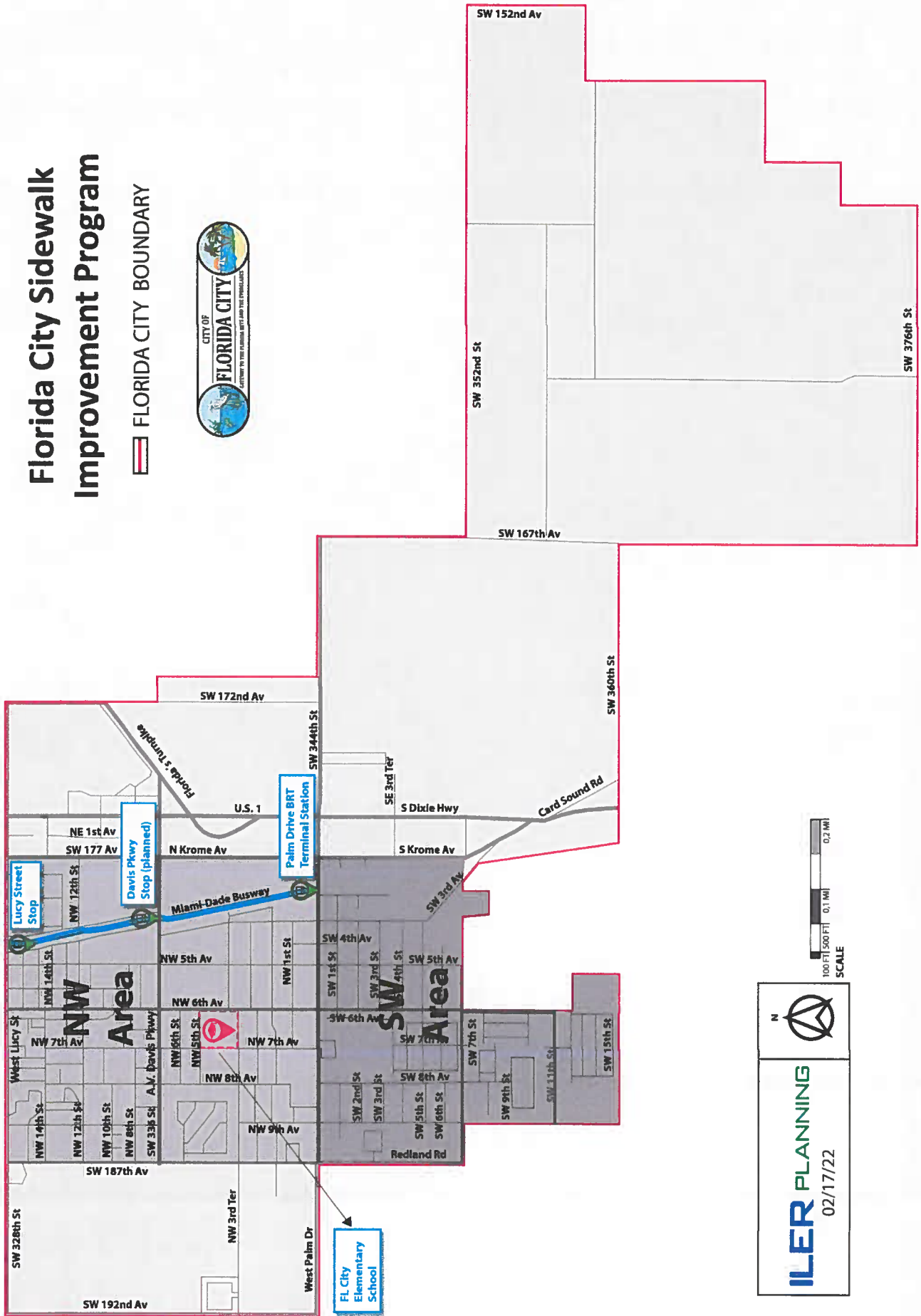
Community Development Block Grant (CDBG) area and the City's Community Redevelopment Agency (CRA) area boundary includes both the NW and SW Areas. The City also has a large number of disabled residents comprising 15% of the population. As with many poorer communities, Florida City exhibits a very low rate of resident auto ownership thus transit, bicycling and walking are very important modes of transportation. It was mentioned previously that Florida City Elementary School is located in the improvement area and it should be noted many kids attend this school from both the NW and SW Areas. These new sidewalks will significantly increase mobility and safety for disadvantaged groups such as the elderly, children and the poor.

The proposed Sidewalk Improvement Program will be greatly enhance the quality of life in the City's NW and SW neighborhoods including better air quality, public safety and reduced use of automobiles. This program has widespread community support and the full endorsement of the Florida City City Commission.

To show its commitment to this project, the City is proposing to contribute 25% of the project cost from local funds.

# Florida City Sidewalk Improvement Program

FLORIDA CITY BOUNDARY



**ILER PLANNING**  
02/17/22



CITY OF FLORIDA CITY  
Damaged/Missing Sidewalks

15 Feb 2022

gl

Ln	Nearest Address - Location	Length
1	1060 NW 9 Ave	10 Lin Ft
2	1050 NW 9 Ave	10 Lin Ft
3	1469 NW 8 Ave	15 Lin Ft
4	409 NW 15 St	15 Lin Ft
5	545 NW 15 St	15 Lin Ft
6	562 NW 15 St	10 Lin Ft
7	589 NW 15 St	10 Lin Ft
8	578 NW 14 St	10 Lin Ft
9	590 NW 14 St	15 Lin Ft
10	523 NW 14 St	10 Lin Ft
11	533 NW 14 St	10 Lin Ft
12	645 NW 14 St	10 Lin Ft
13	691 NW 14 St	15 Lin Ft
14	500 NW 14 St	15 Lin Ft
15	475 NW 14 St	15 Lin Ft
16	305 NW 5 Ave	15 Lin Ft
17	329 NW 5 Ave	15 Lin Ft
18	1330 NW 5 Ave	10 Lin Ft
19	1312 NW 5 Ave	15 Lin Ft
20	1305 NW 5 Ave	10 Lin Ft
21	1421 NW 5 Ave	10 Lin Ft
22	1413 NW 5 Ave	10 Lin Ft
23	1513 NW 5 Ave	15 Lin Ft
24	650 NW 5 Ave	15 Lin Ft
25	1622 NW 5 Ave	5 Lin Ft
26	1514 NW 5 Ave	15 Lin Ft
27	650 NW 5 Ave	15 Lin Ft
28	521 NW 16 St	10 Lin Ft
29	539 NW 16 St	10 Lin Ft
30	538 NW 16 St	5 Lin Ft
31	441 NW 16 St	10 Lin Ft

32	450 NW 16 St	10 Lin Ft
33	950 NW 16 St	10 Lin Ft
34	440 NW 16 St	10 Lin Ft
35	421 Lucy St	10 Lin Ft
36	545 Lucy St	55 Lin Ft
37	221 NW 3 Ave	15 Lin Ft
38	241 NW 3 Ave	10 Lin Ft
39	NW 3 Ave bet 2/3 St	375 Lin Ft
40	410 NW 15 St	5 Lin Ft
41	409 NW 15 St	5 Lin Ft
42	432 NW 15 St	5 Lin Ft
43	440 NW 15 St	5 Lin Ft
44	406 NW 14 St	10 Lin Ft
45	729 NW 12 St	15 Lin Ft
46	225 NW 12 St	5 Lin Ft
47	570 NW 12 St	10 Lin Ft
48	1055 NW 6 Ave	20 Lin Ft
49	746 NW 7 Ct	10 Lin Ft
50	715 NW 8 Ave	10 Lin Ft
51	706 NW 8 Ave	75 Lin Ft
52	336 NW 8 Ave	10 Lin Ft
53	426 NW 8 Ave	5 Lin Ft
54	715 NW 10 St	10 Lin Ft
55	705 NW 9 Ave	50 Lin Ft
56	745 NW 9 Ave	15 Lin Ft
57	426 NW 9 Pl	15 Lin Ft
58	706 NW 8 Ct	45 Lin Ft
59	705 NW 8 Ct	65 Lin Ft
60	916 NW 8 St	25 Lin Ft
61	950 NW 8 St	40 Lin Ft
62	937 NW 10 St	30 Lin Ft
63	923 NW 10 St	5 Lin Ft
64	853 NW 3 St	10 Lin Ft
65	390 NW 3 St	25 Lin Ft

66	373 NW 3 St	45 Lin Ft
67	352 NW 3 St	10 Lin Ft
68	780 NW 5 St	10 Lin Ft
69	445 NW 9 Pl	20 Lin Ft
70	906 NW 4 Ter	35 Lin Ft
71	906 NW 4 La	15 Lin Ft
72	763 Davis Pkwy	15 Lin Ft
73	865 Davis Pkwy	<u>15 Lin Ft</u>
74	Sub-Total Lin Ft NW (a)	1555 Lin Ft
75		
76	537 SW 2 St	15 Lin Ft
77	302 SW 3 St	15 Lin Ft
78	304 SW 3 St	5 Lin Ft
79	310 SW 3 St	15 Lin Ft
80	305 SW 3 St	10 Lin Ft
81	327 SW 3 St	10 Lin Ft
82	328 SW 3 St	5 Lin Ft
83	336 SW 3 St	15 Lin Ft
84	344 SW 3 St	10 Lin Ft
85	353 SW 3 St	5 Lin Ft
86	639 SW 3 St	15 Lin Ft
87	409 SW 3 St	30 Lin Ft
88	569 SW 3 St	5 Lin Ft
89	577 SW 3 St	10 Lin Ft
90	305 SW 5 Ave	70 Lin Ft
91	348 SW 5 Ave	25 Lin Ft
92	130 SW 5 Ave	30 Lin Ft
93	146 SW 5 Ave	45 Lin Ft
94	220 SW 5 Ave	15 Lin Ft
95	305 SW 5 Ave	10 Lin Ft
96	421 SW 5 Ave	50 Lin Ft
97	505 SW 5 Ave	15 Lin Ft
98	529 SW 5 Av	15 Lin Ft
99	535 SW 5 Ave	35 Lin Ft

100	540 SW 5 Ave	20 Lin Ft
101	545 SW 5 Ave	10 Lin Ft
102	305 SW 6 Ave	35 Lin Ft
103	546 SW 6 Ave	20 Lin Ft
104	687 SW 7 Ave	15 Lin Ft
105	240 SW 8 Ave	20 Lin Ft
106	545 SW 5 St	10 Lin Ft
107	546 SW 5 St	10 Lin Ft
108	565 SW 5 St	5 Lin Ft
109	577 SW 5 St	15 Lin Ft
110	615 SW 5 St	50 Lin Ft
111	625 SW 5 St	35 Lin Ft
112	675 SW 5 St	15 Lin Ft
113	726 SW 5 St	15 Lin Ft
114	723 SW 5 St	15 Lin Ft
115	680 SW 7 St	10 Lin Ft
116	530 SW 7 St	15 Lin Ft
117	720 SW 7 St	10 Lin Ft
118	570 SW 6 St	10 Lin Ft
119	578 SW 6 St	15 Lin Ft
120	445 SW 3 Ave	20 Lin Ft
121	687 SW 6 Ter	15 Lin Ft
122	332 SW 3 Ave	15 Lin Ft
123	639 SW 3 Ter	15 Lin Ft
124	787 SW 3 Ter	10 Lin Ft
125	435 SW 6 Ct	10 Lin Ft
126	615 SW 8 Ave	15 Lin Ft
127	515 SW 8 Ave	15 Lin Ft
128	305 SW 8 Ave	10 Lin Ft
129	SW 2 St bet 884/9 Ave	125 Lin Ft
130	SW 9 Ave bet 4 Terr/5 St	340 Lin Ft
131	SW 5 St bet 9 Ave/872	150 Lin Ft
132	SW 8 Ave bet 5 St/425	280 Lin Ft
133	SW 7 St bet 8 Ave/7 Ave	550 Lin Ft

134	SW 7 Ave bet 6 Terr/7 St	150 Lin Ft
135	SW 6 Terr bet 7 Ave/758	250 Lin Ft
136	SW 7 Ct bet 556/5Terr	575 Lin Ft
137	SW 7 Ct bet 5 St/4 St	580 Lin Ft
138	SW 5 St bet 7 Ct/8 Ave	460 Lin Ft
139	SW 7 Ct bet 5 St/406	150 Lin Ft
140	SW 7 Ave bet 3 Terr/5 St	550 Lin Ft
141	SW 7 Ave bet 5 St/5 Terr	475 Lin Ft
142	SW 5 Terr bet 7 Ave 7 Ct	150 Lin Ft
143	SW 4 St bet 5 Ave/3 Ave	1250 Lin Ft
144	SW 3 Ave bet 1 St/3 St	2150 Lin Ft
145	Krome Ave bet SW 9 St/336 St	<u>5280 Lin Ft</u>
146	Sub-Total Lin Ft SW (b)	15100 Lin Ft
147		
148	Total Lin Ft Sidewalks (a+b)	16655 Lin Ft
149		

150 Note 1: all sidewalks are 5 Ft wide

151 Note 2: all sidewalks were measured with a 12"

152 wheel Lufkin HI-Viz WW38

153 Note 3: Prepared by Eugene Leon, City Project Manager

### **Section 3: Scope of Work**

This project will be managed by the City's Project Manager, Gene Leon, with assistance from the City's Engineer, Pedro Gonzalez. As shown in Section 10, the City has solid experience in managing sidewalk improvements and thus the design plans for standard sidewalk construction are already completed and tested on prior projects. The proposed scope of work is provided below.

#### **Task 1: Grant Agreement**

City staff will work with the FDOT and TPO to finalize and execute the grant agreement, and designate the FDOT Grant Coordinator for the project

#### **Task 2: Contractor Selection**

The City will advertise the project for contractor selection consistent with State purchasing procedures for services. The Mayor, City Engineer and Project Manager will form the selection committee.

#### **Task 3: Building Permits**

The contractor selected will obtain a general building permit for groups of related sidewalk links in coordination with the City's Building Official.

#### **Task 4: Construction**

The contractor will mobilize the necessary equipment and personnel to start and sustain construction through the project period. This task is expected to last for a major portion of the grant period.

#### **Task 5: Inspections**

City building inspectors will inspect and approve each sidewalk link when completed. The City Engineer will also perform periodic inspections of completed portions of the project.

#### **Task 6: Project Completion**

When all sidewalk links completed, the City Engineer will perform an overall final inspection and issue a report. The report will be forwarded to the Grant Coordinator for review and approval. Once approval is obtained, the grant will be closed out.

## Section 4: Project Implementation Plan

### Schedule

The project schedule is provided below.

<u>Task</u>	<u>Completion (from NTP*)</u>
1. Grant Agreement	60 days
2. Contractor Selection	180 days
3. Building Permits	180 to 1,035 days
4. Construction	240 to 1,035 days
5. Inspection	300 to 1,035 days
6. Project Completion	1,035 to 1,095 days

\* Notice-to-Proceed.

### Project Permits

The contractor will be responsible for obtaining project permits for each sidewalk link. In most cases, this will only involve the City's Building Division. However, the sidewalks on Krome Avenue (SW 177<sup>th</sup> Avenue) will require approval from Miami-Dade County.

**Section 5: Environmental Evaluation**

City staff has conducted an environmental assessment of the proposed sidewalk links and found no wetland, native habitat or other environmental issues.



## **Section 6: Right of Way Evaluation**

As discussed previously, necessary public right-of way under the construction of the 143 sidewalk links is already in place. No additional right-of-way will be needed.

**Section 7: Opinion of Probable Cost**

An opinion of probable cost, prepared by the City Engineer is attached in this section.

**CONSTRUCTION COST ESTIMATE SIDEWALK IMPROVEMENTS FLORIDA CITY**

Sidewalk Location	Length, FT	Unit Price, \$/FT	Sub-Total Cost
<b>NW Area</b>			
1060 NW 9 AVE	10	\$55.00	\$550
1050 NW 9 AVE	10	\$55.00	\$550
1469 NW 8 AVE	15	\$55.00	\$825
409 NW 15 ST	15	\$55.00	\$825
545 NW 15 ST	15	\$55.00	\$825
562 NW 15 ST	10	\$55.00	\$550
589 NW 15 ST	10	\$55.00	\$550
578 NW 14 ST	10	\$55.00	\$550
590 NW 14 ST	15	\$55.00	\$825
523 NW 14 ST	10	\$55.00	\$550
533 NW 14 ST	10	\$55.00	\$550
645 NW 14 ST	10	\$55.00	\$550
691 NW 14 ST	15	\$55.00	\$825
500 NW 14 ST	15	\$55.00	\$825
475 NW 14 ST	15	\$55.00	\$825
305 NW 5 AVE	15	\$55.00	\$825
329 NW 5 AVE	15	\$55.00	\$825
1330 NW 5 AVE	10	\$55.00	\$550
1312 NW 5 AVE	15	\$55.00	\$825
1305 NW 5 AVE	10	\$55.00	\$550
1421 NW 5 AVE	10	\$55.00	\$550
1413 NW 5 AVE	10	\$55.00	\$550
1513 NW 5 AVE	15	\$55.00	\$825
650 NW 5 AVE	15	\$55.00	\$825
1622 NW 5 AVE	5	\$55.00	\$275
1514 NW 5 AVE	15	\$55.00	\$825
650 NW 5 AVE	15	\$55.00	\$825

**CONSTRUCTION COST ESTIMATE SIDEWALK IMPROVEMENTS FLORIDA CITY**

Sidewalk Location	Length, FT	Unit Price, \$/FT	Sub-Total Cost
521 NW 16 ST	10	\$55.00	\$550
539 NW 16 ST	10	\$55.00	\$550
538 NW 16 ST	5	\$55.00	\$275
441 NW 16 ST	10	\$55.00	\$550
450 NW 16 ST	10	\$55.00	\$550
950 NW 16 ST	10	\$55.00	\$550
440 NW 16 ST	10	\$55.00	\$550
421 LUCY ST	10	\$55.00	\$550
545 LUCY ST	55	\$55.00	\$3,025
221 NW 3 AVE	15	\$55.00	\$825
241 NW 3 AVE	10	\$55.00	\$550
410 NW 15 ST	5	\$55.00	\$275
409 NW 15 ST	5	\$55.00	\$275
432 NW 15 ST	5	\$55.00	\$275
440 NW 15 ST	5	\$55.00	\$275
406 NW 14 ST	10	\$55.00	\$550
729 NW 12 ST	15	\$55.00	\$825
225 NW 12 ST	5	\$55.00	\$275
570 NW 12 ST	10	\$55.00	\$550
1055 NW 6 AVE	20	\$55.00	\$1,100
746 NW 7 CT	10	\$55.00	\$550
715 NW 8 AVE	10	\$55.00	\$550
706 NW 8 AVE	75	\$55.00	\$4,125
336 NW 8 AVE	10	\$55.00	\$550
426 NW 8 AVE	5	\$55.00	\$275
715 NW 10 ST	10	\$55.00	\$550
705 NW 9 AVE	50	\$55.00	\$2,750
745 NW 9 AVE	15	\$55.00	\$825

**CONSTRUCTION COST ESTIMATE SIDEWALK IMPROVEMENTS FLORIDA CITY**

Sidewalk Location	Length, FT	Unit Price, \$/FT	Sub-Total Cost
426 NW 9 PL	15	\$55.00	\$825
706 NW 8 CT	45	\$55.00	\$2,475
705 NW 8 CT	65	\$55.00	\$3,575
916 NW 8 ST	25	\$55.00	\$1,375
950 NW 8 ST	40	\$55.00	\$2,200
937 NW 10 ST	30	\$55.00	\$1,650
923 NW 10 ST	5	\$55.00	\$275
853 NW 3 ST	10	\$55.00	\$550
390 NW 3 ST	25	\$55.00	\$1,375
373 NW 3 ST	45	\$55.00	\$2,475
352 NW 3 ST	10	\$55.00	\$550
780 NW 5 ST	10	\$55.00	\$550
445 NW 9 PL	20	\$55.00	\$1,100
906 NW 4 TER	35	\$55.00	\$1,925
906 NW 4 LA	15	\$55.00	\$825
763 DAVIS PKWY	15	\$55.00	\$825
NW 3 AVE BET 2/3 ST	375	\$55.00	\$20,625
865 DAVIS PKWY	15	\$55.00	\$825
<b>Total NW Area</b>	<b>1,555</b>		<b>\$85,525</b>

**CONSTRUCTION COST ESTIMATE SIDEWALK IMPROVEMENTS FLORIDA CITY**

Sidewalk Location	Length, FT	Unit Price, \$/FT	Sub-Total Cost
<b>SW Area</b>			
537 SW 2 ST	15	\$55.00	\$825.00
302 SW 3 ST	15	\$55.00	\$825.00
304 SW 3 ST	5	\$55.00	\$275.00
310 SW 3 ST	15	\$55.00	\$825.00
305 SW 3 ST	10	\$55.00	\$550.00
327 SW 3 ST	10	\$55.00	\$550.00
328 SW 3 ST	5	\$55.00	\$275.00
336 SW 3 ST	15	\$55.00	\$825.00
344 SW 3 ST	10	\$55.00	\$550.00
353 SW 3 ST	5	\$55.00	\$275.00
639 SW 3 ST	15	\$55.00	\$825.00
409 SW 3 ST	30	\$55.00	\$1,650.00
569 SW 3 ST	5	\$55.00	\$275.00
577 SW 3 ST	10	\$55.00	\$550.00
305 SW 5 AVE	70	\$55.00	\$3,850.00
348 SW 5 AVE	25	\$55.00	\$1,375.00
130 SW 5 AVE	30	\$55.00	\$1,650.00
146 SW 5 AVE	45	\$55.00	\$2,475.00
220 SW 5 AVE	15	\$55.00	\$825.00
305 SW 5 AVE	10	\$55.00	\$550.00
421 SW 5 AVE	50	\$55.00	\$2,750.00
505 SW 5 AVE	15	\$55.00	\$825.00
529 SW 5 AVE	15	\$55.00	\$825.00
535 SW 5 AVE	35	\$55.00	\$1,925.00
540 SW 5 AVE	20	\$55.00	\$1,100.00
545 SW 5 AVE	10	\$55.00	\$550.00
305 SW 6 AVE	35	\$55.00	\$1,925.00

**CONSTRUCTION COST ESTIMATE SIDEWALK IMPROVEMENTS FLORIDA CITY**

Sidewalk Location	Length, FT	Unit Price, \$/FT	Sub-Total Cost
546 SW 6 AVE	20	\$55.00	\$1,100.00
687 SW 7 AVE	15	\$55.00	\$825.00
240 SW 8 AVE	20	\$55.00	\$1,100.00
545 SW 5 ST	10	\$55.00	\$550.00
546 SW 5 ST	10	\$55.00	\$550.00
565 SW 5 ST	5	\$55.00	\$275.00
577 SW 5 ST	15	\$55.00	\$825.00
615 SW 5 ST	50	\$55.00	\$2,750.00
625 SW 5 ST	35	\$55.00	\$1,925.00
675 SW 5 ST	15	\$55.00	\$825.00
726 SW 5 ST	15	\$55.00	\$825.00
723 SW 5 ST	15	\$55.00	\$825.00
680 SW 7 ST	10	\$55.00	\$550.00
530 SW 7 ST	15	\$55.00	\$825.00
720 SW 7 ST	10	\$55.00	\$550.00
570 SW 6 ST	10	\$55.00	\$550.00
578 SW 6 ST	15	\$55.00	\$825.00
445 SW 3 AVE	20	\$55.00	\$1,100.00
687 SW 6 TER	15	\$55.00	\$825.00
332 SW 3 AVE	15	\$55.00	\$825.00
639 SW 3 TER	15	\$55.00	\$825.00
787 SW 3 TER	10	\$55.00	\$550.00
435 SW 6 CT	10	\$55.00	\$550.00
615 SW 8 AVE	15	\$55.00	\$825.00
515 SW 8 AVE	15	\$55.00	\$825.00
305 SW 8 AVE	10	\$55.00	\$550.00
SW 2 ST BET 884/9 AVE	125	\$55.00	\$6,875.00
SW 9 AVE BET 4 TER/5 ST	340	\$55.00	\$18,700.00

CONSTRUCTION COST ESTIMATE SIDEWALK IMPROVEMENTS FLORIDA CITY			
Sidewalk Location	Length, FT	Unit Price, \$/FT	Sub-Total Cost
SW 5 ST BET 9 AVE/872	150	\$55.00	\$8,250.00
SW 8 SVE BET 5 ST/425	280	\$55.00	\$15,400.00
SW 7 ST BET 8 AVE/7 AVE	550	\$55.00	\$30,250.00
SW 7 AVE BET 6 TERR/7 ST	150	\$55.00	\$8,250.00
SW 7 AVE BET 5 TERR/6 TERR	250	\$55.00	\$13,750.00
SW 6 TERR BET 7 AVE/758	250	\$55.00	\$13,750.00
SW 7 CT BET 556 TERR/5 TERR	575	\$55.00	\$31,625.00
SW 7 CT BET 5 ST/4 ST	580	\$55.00	\$31,900.00
SW 5 ST BET 7 CT/8 AVE	460	\$55.00	\$25,300.00
SW 7 CT BET 5 ST/406	150	\$55.00	\$8,250.00
SW 7 AVE BET 3 TERR/5 ST	550	\$55.00	\$30,250.00
SW 7 AVE BET 5 ST/5 TERR	475	\$55.00	\$26,125.00
SW 5 TERR BET 7 AVE 7 CT	150	\$55.00	\$8,250.00
SW 4 ST BET 5 AVE/3 AVE	1250	\$55.00	\$68,750.00
SW 3 AVE BET 1 ST/3 ST	2150	\$55.00	\$118,250.00
KROME AVE BET SW 9 ST/336 ST	5280	\$55.00	\$290,400.00
<b>Totals SW Area</b>	<b>14,665</b>		<b>\$806,575.00</b>
<b>Total Cost Sidewalk Improvements</b>			<b>\$892,100.00</b>
Notes:			
1. Includes the price for sidewalk construction/restoration in the public right of way of Florida City.			
2. The unit price for sidewalk improvements used for this estimate corresponds to the most recent unit price for bond estimates of subdivision improvements in Florida City.			
I, Pedro Delfin Gonzalez, P.E., City Engineer of Florida City certify to the best of my knowledge that the costs presented above are accurate for construction estimation purposes.			

**Pedro D. Gonzalez, P.E.**  
 Digitally signed by Pedro D. Gonzalez, P.E.  
 DN: cn=Pedro D. Gonzalez, P.E., o=Baljet Environmental, Inc., ou, email=pgonzalez@baljet.com, c=US  
 Date: 2022.02.17 13:21:49 -05'00'



**Section 8: Local Agency Funding Contribution**

The City proposes to contribute 25% of the total project cost from local funds. This would total \$223,025.

**Section 9: LAP Certification Status**

The City will be the project sponsor and will enter into a Local Agency Program (LAP) Agreement with FDOT if selected, prior to the initiation of the scope of work.

## **Section 10: Past Performance**

### **Procurement**

The City has long and successful experience in procuring services for a wide-range of municipal projects. Attached in this section is a list of the 18 sidewalk projects completed since 2018, totaling 11,721 linear feet.

### **Project Management**

The Public Works Department has worked hand-in-hand with City Administration and Building Division to complete the 18 sidewalk projects listed herein and many other City construction projects. This includes effective management of the contractor and on-site work, and processing of valid change orders. Construction management is coordinated by the City's Project Manager and City Engineer.

### **Invoicing**

The City processes and approves all contractor invoices for work completed, checking the quality and extent of work done in the field, and the personnel hours and quantities shown on each invoice. Approved invoices are paid within 30 days. Invoices will also be sent to the FDOT Grant Coordinator.

City of Florida City  
Sidewalk Improvements

16 Feb 2022

91

Ln	Contractor's Name	Location	Qty-LinFt	Amount \$	Completion Date
1	HG Construction	NW 5 Ave/Roberts Park	1129	\$ 21,713.00	Dec 2021
2	Roadway Construction	East Plm Dr-SW 344 St	3596	\$ 72,723.00	Jul 2021
3	Maggolc Inc	NW 1 and 2 St frm NW			
4		e Ave to NW 7 Ave	968	\$ 22,924.00	Sep2019
5	Weekley Asphalt Paving	SW 1 St from SW 2 Ave			
7		to SW 3 Ave/NW 3 Ave			
8		, NW 4 Sve & NW 6 Ave	3004	\$ 21,683.00	Apr 2018
9	Tequesta Const Services	SW 7 St at 5,6,7 Ave	265	\$ 8,625.00	Oct 2020
10	Tequesta Const Services	SW 5 Ave/5 St	849	\$ 16,520.00	Sep 2020
11	Tequesta Const Services	NW 6 Ave/1 St	36	\$ 1,950.00	Dec 2020
12	Coast to Coast Concrete	NW 8 Ave/14 St	37	\$ 2,200.00	Feb 2021
13	Tequesta Const Services	NW 9 St/3 La	50	\$ 2,875.00	Mar 2021
14	Tequesta Const Services	SW 4 Ave/1 St	35	\$ 1,875.00	Mar 2021
15	Coast to Coast Concrete	SW 6 Ave/7St	60	\$ 4,500.00	Apr 2021
16	Tequesta Const Services	SW 6 St/3 Ave	85	\$ 3,294.00	Mar 2021
17	Coast to Coast Concrete	NW 6 Ave/Davis Pkwy	400	\$ 9,000.00	Jul 2021
18	Tequesta Const Services	NW 7 Ave/3 St	950	\$ 7,125.00	Jul 2021
19	Tequesta Const Services	NW 7 Ave/3 Terr	72	\$ 3,425.00	Jul 2021
20	Tequesta Const Services	715-775 NW Terr	105	\$ 7,140.00	Nov 2021
21	Tequesta Const Services	SW 8 St/6 Ave	80	\$ 4,680.00	Jan 2022
22					
23					
24					

**FLORIDA DEPARTMENT OF TRANSPORTATION DISTRICT VI  
2022 TRANSPORTATION ALTERNATIVES APPLICATION CYCLE  
FOR FISCAL YEAR 2027/2028**

**LOCAL AGENCY BUDGET OFFICE COMMITMENT LETTER**

**Submit a letter from the Local Agency's Budget Office committing Local Funds to the project.**

**Agency must include this form as a cover for the letter.**

*Click here to enter text.*



## Office of the Mayor

February 18, 2022

Xiomara Nunez  
Local Programs Administrator  
FDOT District Six  
Miami, Florida

Re: Florida City Sidewalk Improvement Program – Local Funds Commitment

Dear Ms. Nunez:

In addition to being the Mayor of Florida City, I'm also the City Manager and oversee the Budget Department. The City of Florida City has local funding available to contribute 25% of the total cost of the Sidewalk Improvement Program or \$223,025 and hereby commits to expend these monies on the Program, should the grant be approved.

Don't hesitate to contact me if you have any questions concerning this commitment or need additional information.

Thank you,

Otis T. Wallace  
Mayor

**FLORIDA DEPARTMENT OF TRANSPORTATION DISTRICT VI**  
**2022 TRANSPORTATION ALTERNATIVES APPLICATION CYCLE**  
**FOR FISCAL YEAR 2027/2028**

**PROJECT SPONSORSHIP CERTIFICATION**

I hereby certify that the proposed project herein described is supported by the City of Florida City (Local Agency, county, state or federal agency, or tribal council) and that said entity will: (1) provide any required funding match; (2) enter into a maintenance agreement with the Florida Department of Transportation (FDOT); (3) comply with the Federal Uniform Relocation Assistance and Acquisition Policies Act for any Right of Way actions required for the project, (4) Comply with Local Agency Program Manual during all phases of the project, (5) comply with the NEPA process prior to construction, which may involve coordination with the State Historic and Preservation Office (SHPO) prior to construction, and (6) support other actions necessary to fully implement the proposed project.

I further certify that the estimated costs are reasonable and understand that the City of Florida City (Local Agency, county, state or federal agency, or tribal council) will bear all expenses in excess of the total cost of the project. Upon notification of project award, I further certify that the aforementioned entity will work with the FDOT to ensure the associated contracts are executed in the fiscal year programmed. Project deferrals are highly discouraged and are subject to fund availability.

**Name (please type or print):** Otis T. Wallace

**Title:** Mayor

**Signature:** 

**Date:** 2-18-22

Signature of person with budget authority  
(i.e., County Administrator, or Public Works Director)