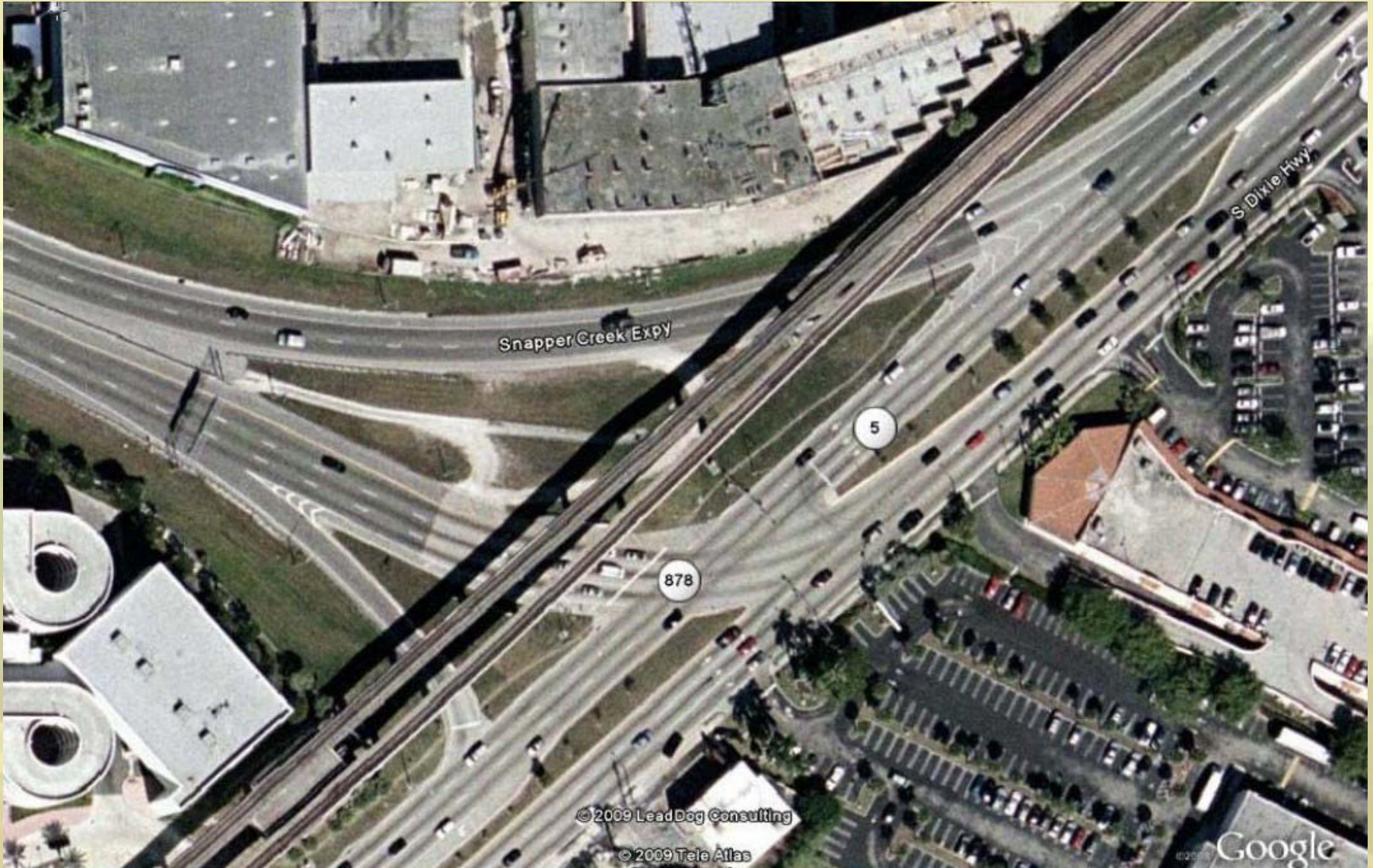


US-1/SR-878 Intersection Sub-area Traffic Study

**TPTAC Presentation
September 2, 2009**



Study Focal Point



Miami-Dade County
Metropolitan Planning Organization

**US-1/SR-878
Intersection Sub-area
Traffic Study**

GPC-III-38

Time Schedule

TASK	MONTH							
	May	June	July	Aug.	Sept.	Oct.	Nov.	Dec.
1. MANAGEMENT/COORDINATION								
a. Monthly Status Reports		■	■	■	■	■	■	
b. Coordination/TPTAC	■	■	■	■	■	■	■	
c. Stakeholders Meetings					■	■	■	
2. DATA COLLECTION/TRAFFIC ASSESSMENT								
a. Obtain Information	■	■	■					
b. Traffic Analysis			■	■	■			
3. TRAFFIC ASSESSMENT/RECOMMENDATIONS								
a. Future Conditions				■	■	■		
b. Congestion Reduction Strategies					■	■		
c. Propose/Prioritize Improvements						■	■	■
d. Cost and Benefit Estimates					■	■	■	■
4. DELIVERABLES					■	■	■	■

Revised 9/1/09 - Draft



- ACTIVITY



- PRESENTATION





Simulation: Existing Conditions

TIP Projects

TIP Map - Windows Internet Explorer

http://www.idasnet.com/map/default.aspx

Filter by Agencies - All Agencies Landmarks Dadeland North Station Go

InteracTIP

MPO

Introduction and Purpose
Instructions and Help

Layers

Mappable Projects

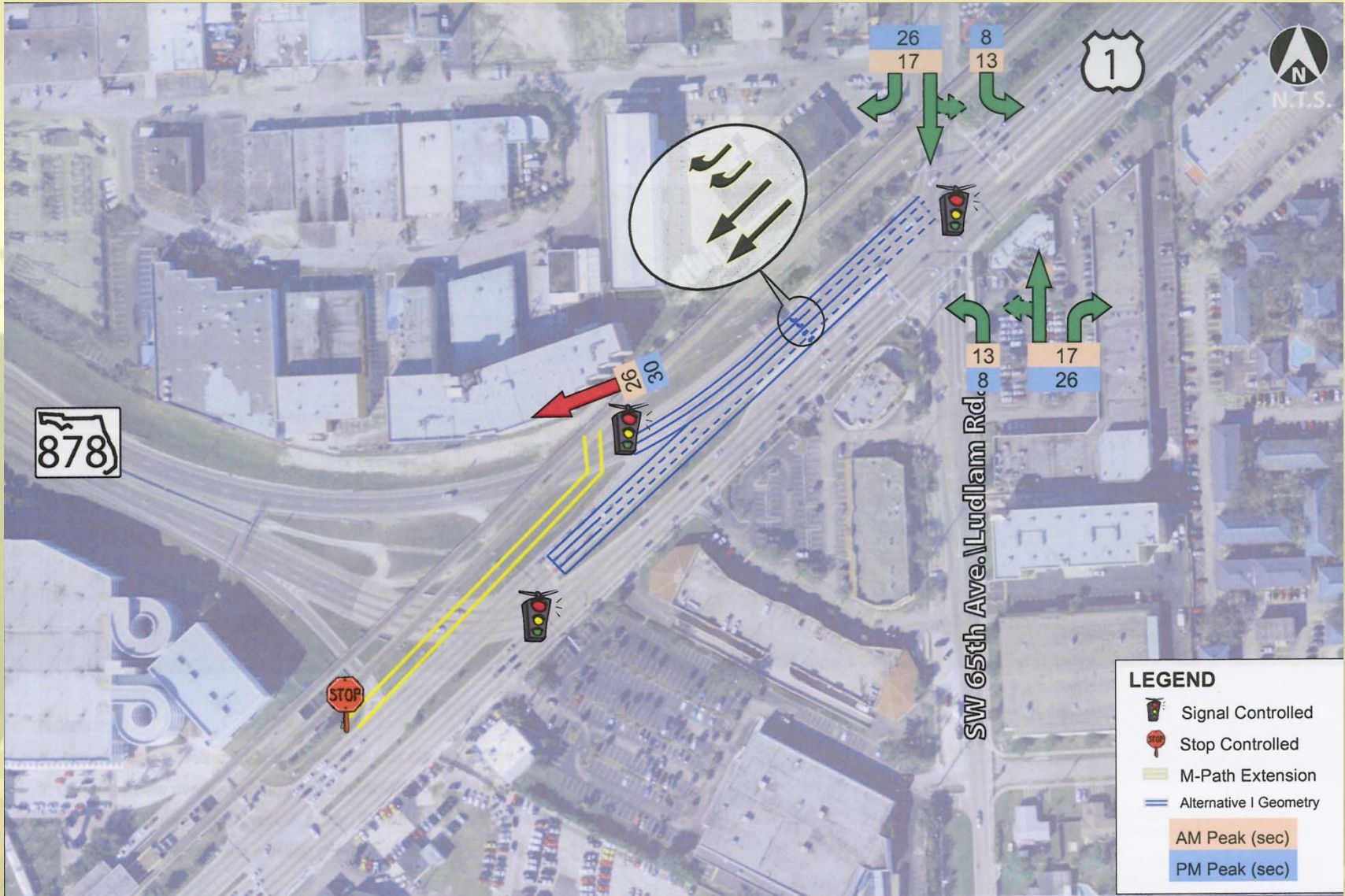
Type of Projects

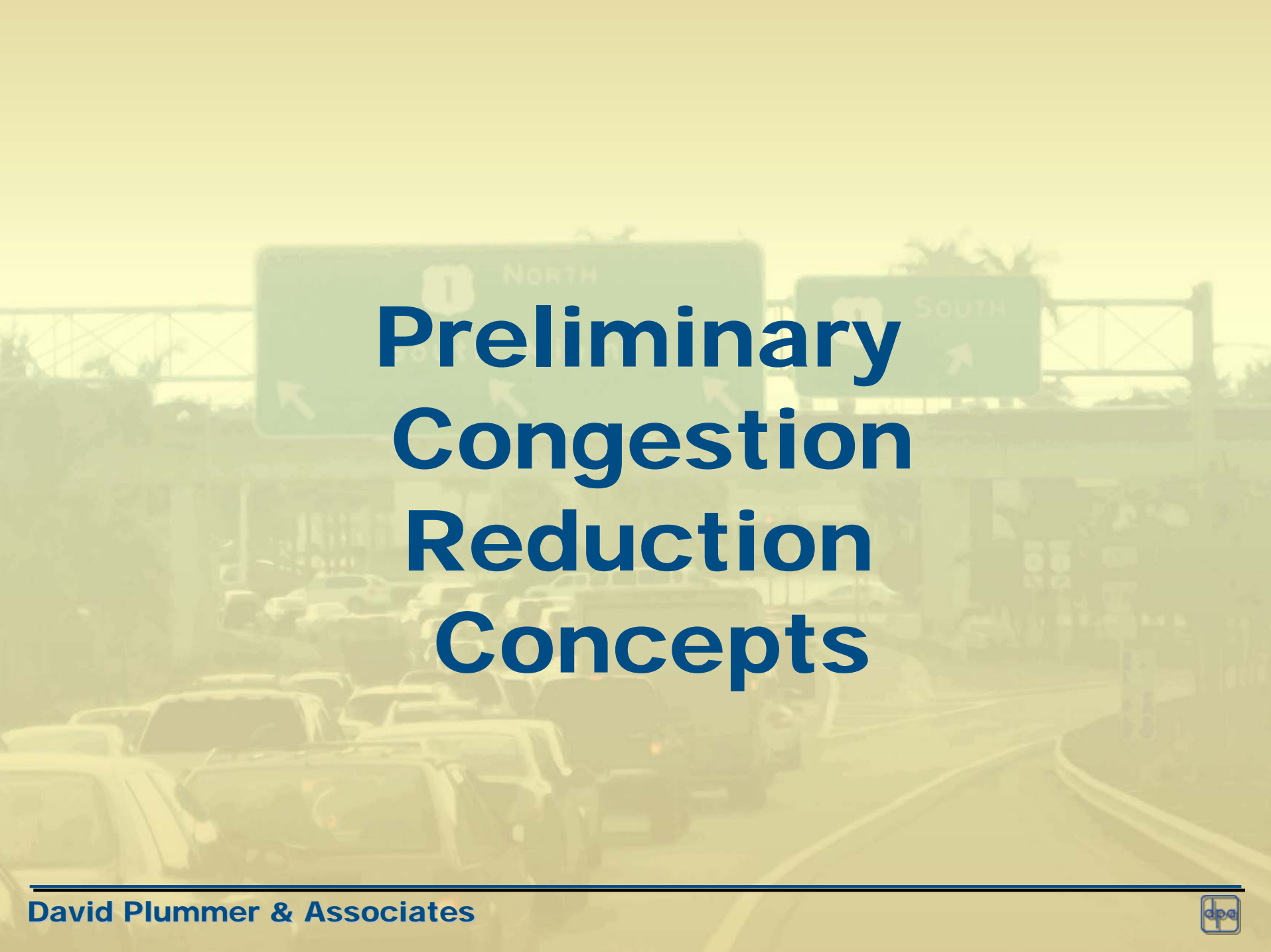
- Arterial/Collector Road
- Electronic Signs/Monitoring
- Expressway
- Passenger Transfer Station
- Pedestrian/Bicycle
- Transit

Results

XA10010	- SR 874 / SR
DT4146271	- SR 973/S
XA10014	- SR 878 Toll
XA10014	- SR 878 Toll
XA10014	- SR 878 Toll
DT4226141	- SR 986/S
XAS7409	- SR 874 Mair
XAS7407	
PW1000022	- SW 92 A
PW1000021	- SW 87 A
XA10015	- SR 874 Toll
PW000316a	- SW 97 A
DT4235141	- SR 94/KE
XAS7411	- SR 874 / SR

M-Path Study Implementation





Preliminary Congestion Reduction Concepts

A photograph of a highway interchange with traffic signs for North and South directions, overlaid with the text "Signal Timing". The image is faded and serves as a background for the title.

Signal Timing

Intersection Improvements

Available ROW

Davis Rd (SW 80 St): 70'

Intersection Improvements

Available ROW

Ludlam Rd (SW 67 Av)

North of SW 80 St: 70'

South of SW 80 St: 80'

Intersection Improvements

Available ROW

Dixie Hwy (US-1)

Kendall – SR 878: 116'

SR 878 – SW 80 St: 128'

SW 80 St – Red Rd: 80' – 126'

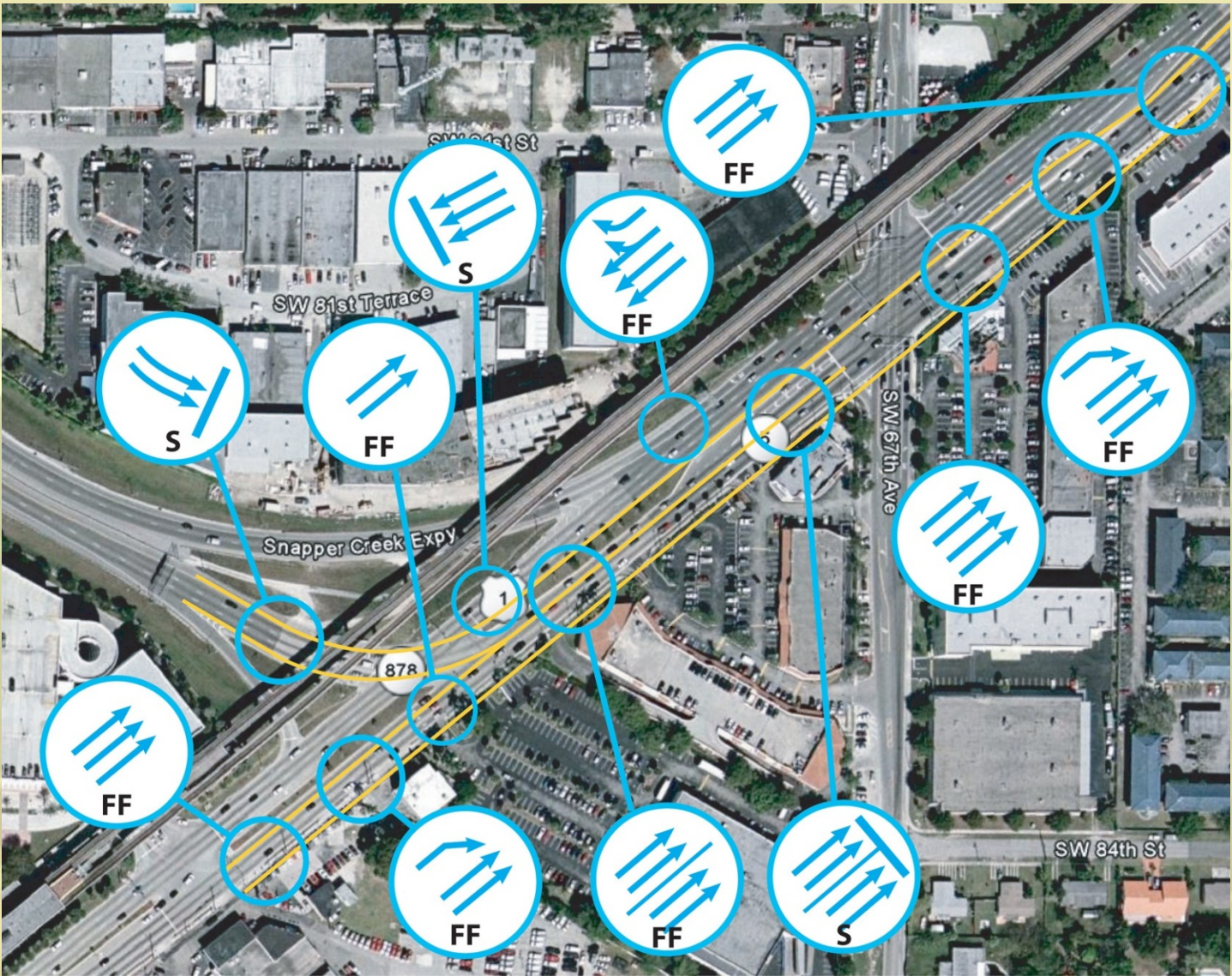
Widen Dixie Highway



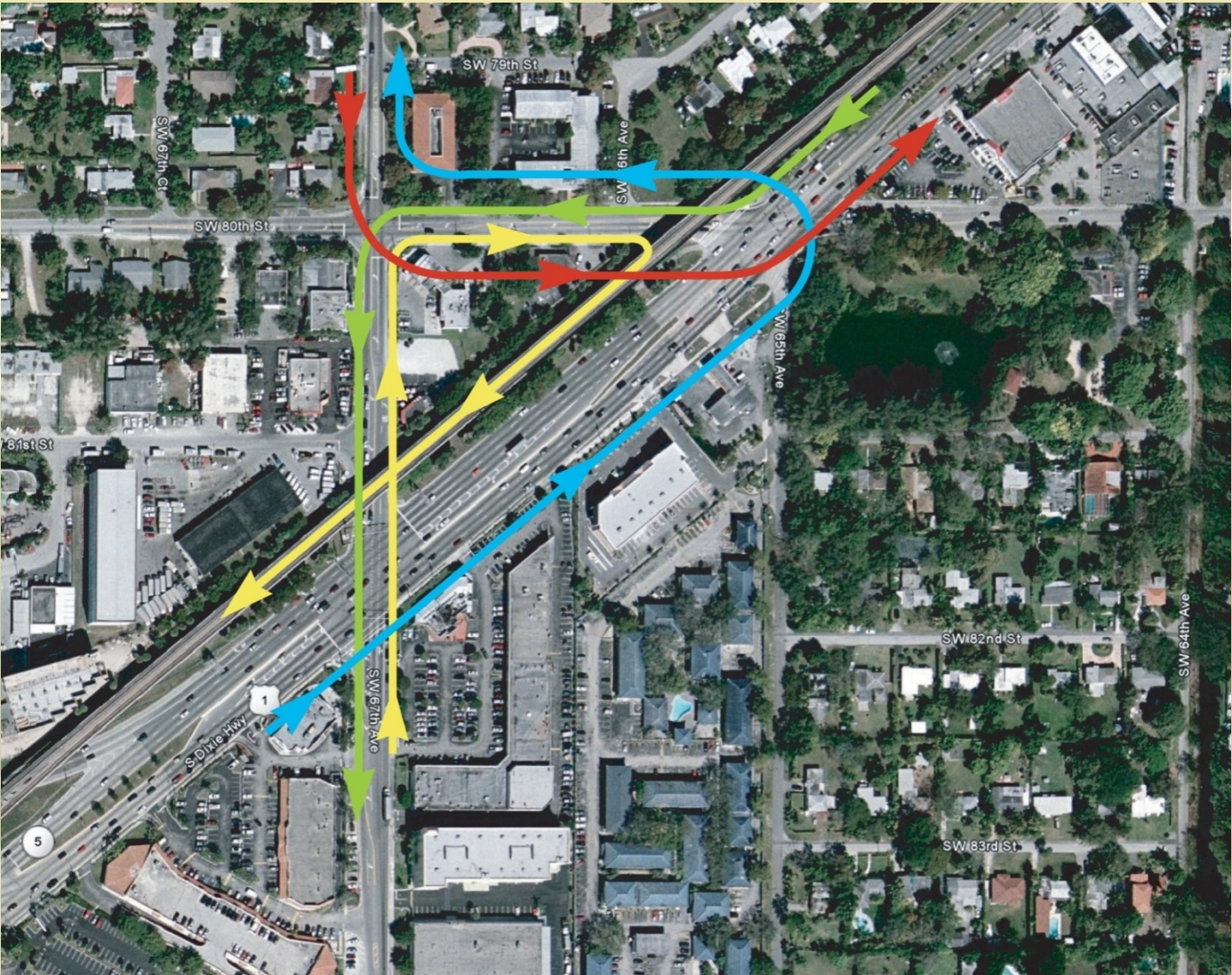
Partial Grade Separation



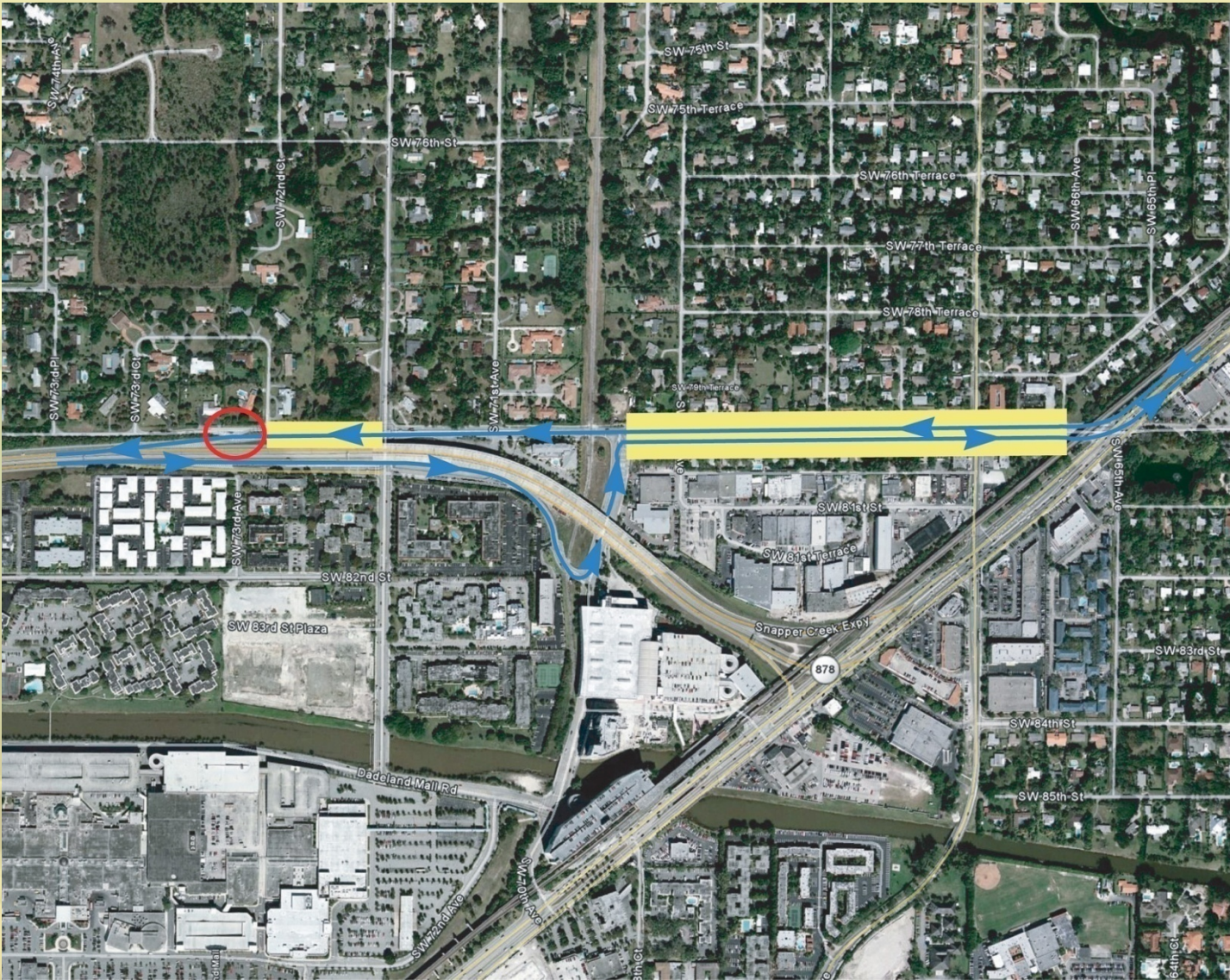
Turbo Lane



Indirect Left Turns



Improve Alternate Route





Next Step

A photograph of a highway interchange with traffic signs. The signs are green with white text and arrows. The left sign says 'NORTH' and 'South Miami' with three arrows pointing left. The right sign says 'SOUTH' with one arrow pointing up. The word 'Questions?' is overlaid in the center in a blue serif font.

Questions?

US-1/SR-878 Intersection Sub-area Traffic Study

**TPTAC Presentation
September 2, 2009**





1 NORTH
South Miami

1 SOUTH



