







Indirect Left Turns Study



Sample Signal Phasing with Protected Left Turns

					
phase	1	2	3	4	
seconds	15	45	10	30	100 secs
Through Traffic Capacity vph/lane	0	810	0	540	1350

Sample Signal Phasing without Left Turn Movements*

			
phase	1	2	
seconds	60	40	100
Through Traffic Capacity vph/lane	1080	720	1800
Improvement	33%	33%	33%

*Note: Left turns rerouted

Study Advisory Committee

Transp. Planning Tech. Ad. Committee

- FDOT
- MD Public Works
- MD Planning
- MD Transit
- MD Aviation
- MD DERM
- MD Seaport
- MDX

Transp. Planning Council

Transportation Agencies and Municipalities
(incl. City of Miami)

Alternative Treatments

- LT via 3 RT
- Jughandle
- Quadrant Roadway Intersection
- Median U-Turn Crossover
- Super-Street Media Crossover
- Continuous Flow Intersection
- Parallel Flow Intersection

Countywide Intersection Screening Criteria

- LRTP Planning Area
- Traffic LOS/Volumes
- Number of LT Signal Phases
- LT Lane Length
- Type of Route
- Availability of Alternative Route

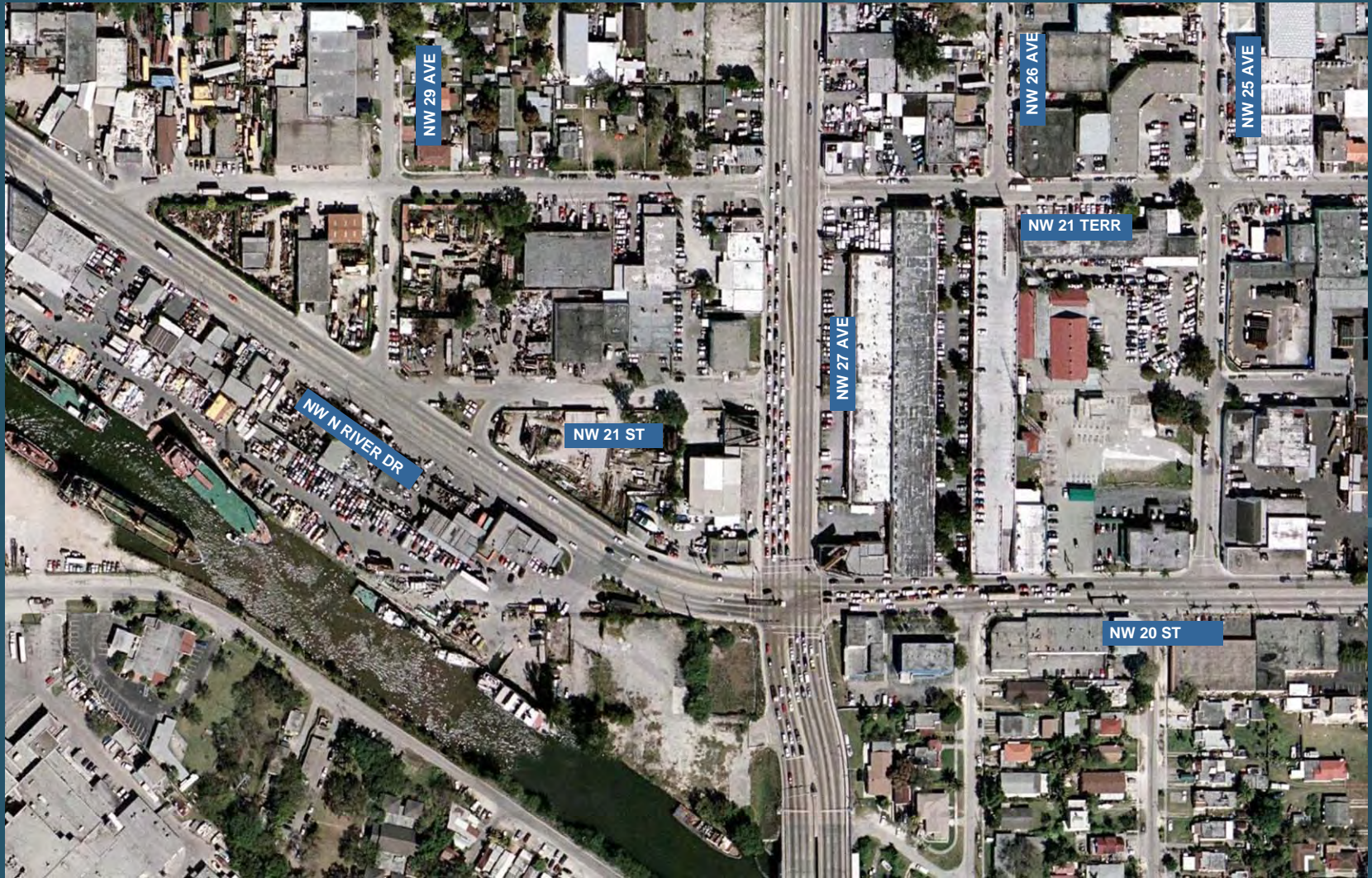
Countywide Intersection Screening Additional Criteria

- Suitability of Alt. Routes
- County or FDOT Road
- Constrained ROW
- Planned Improvements
- Residential Impacts
- Transit LT

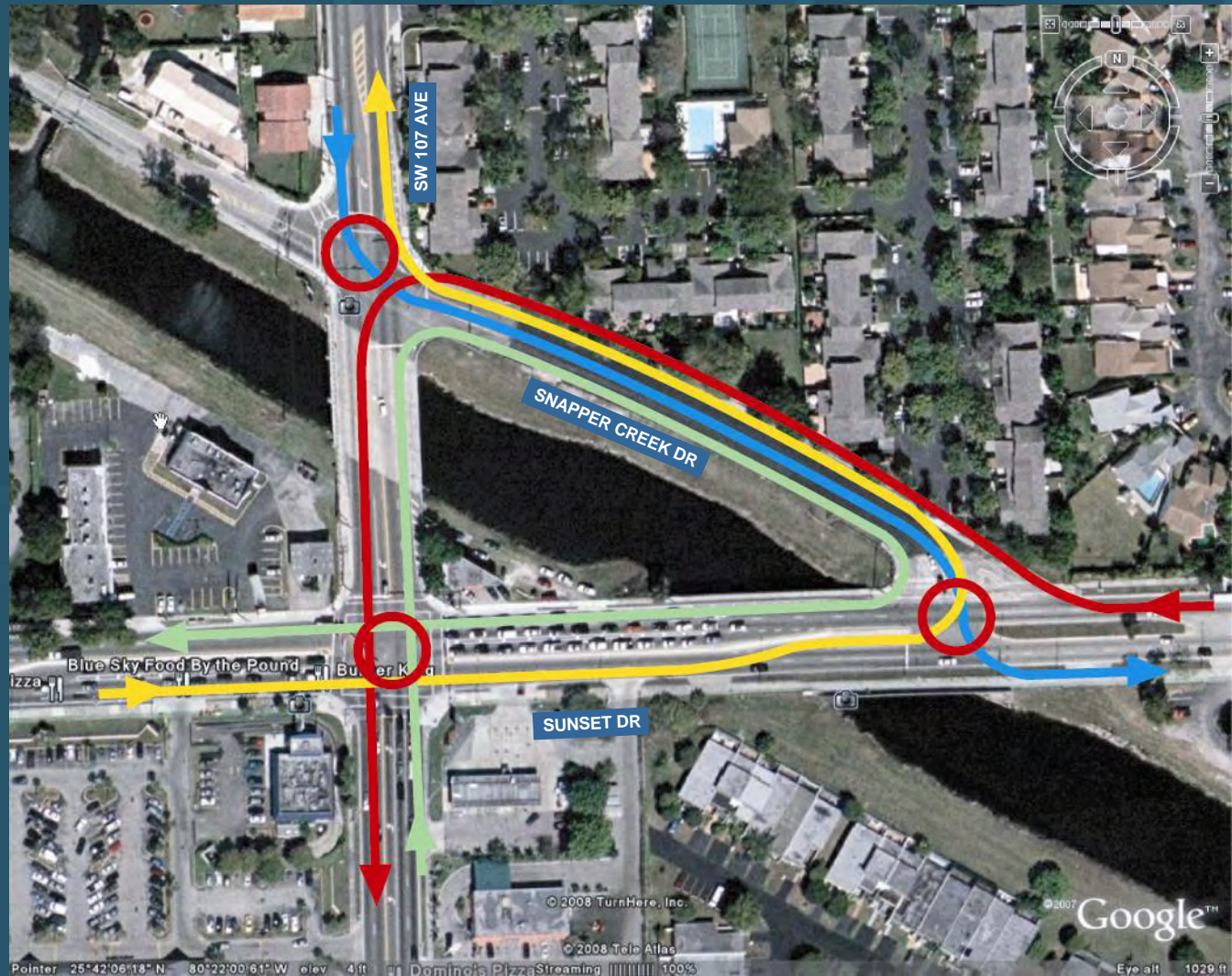
SUNSET DR/SW 107 AVE



NW 27 AVE/ 20 ST/ NW N RIVER DR

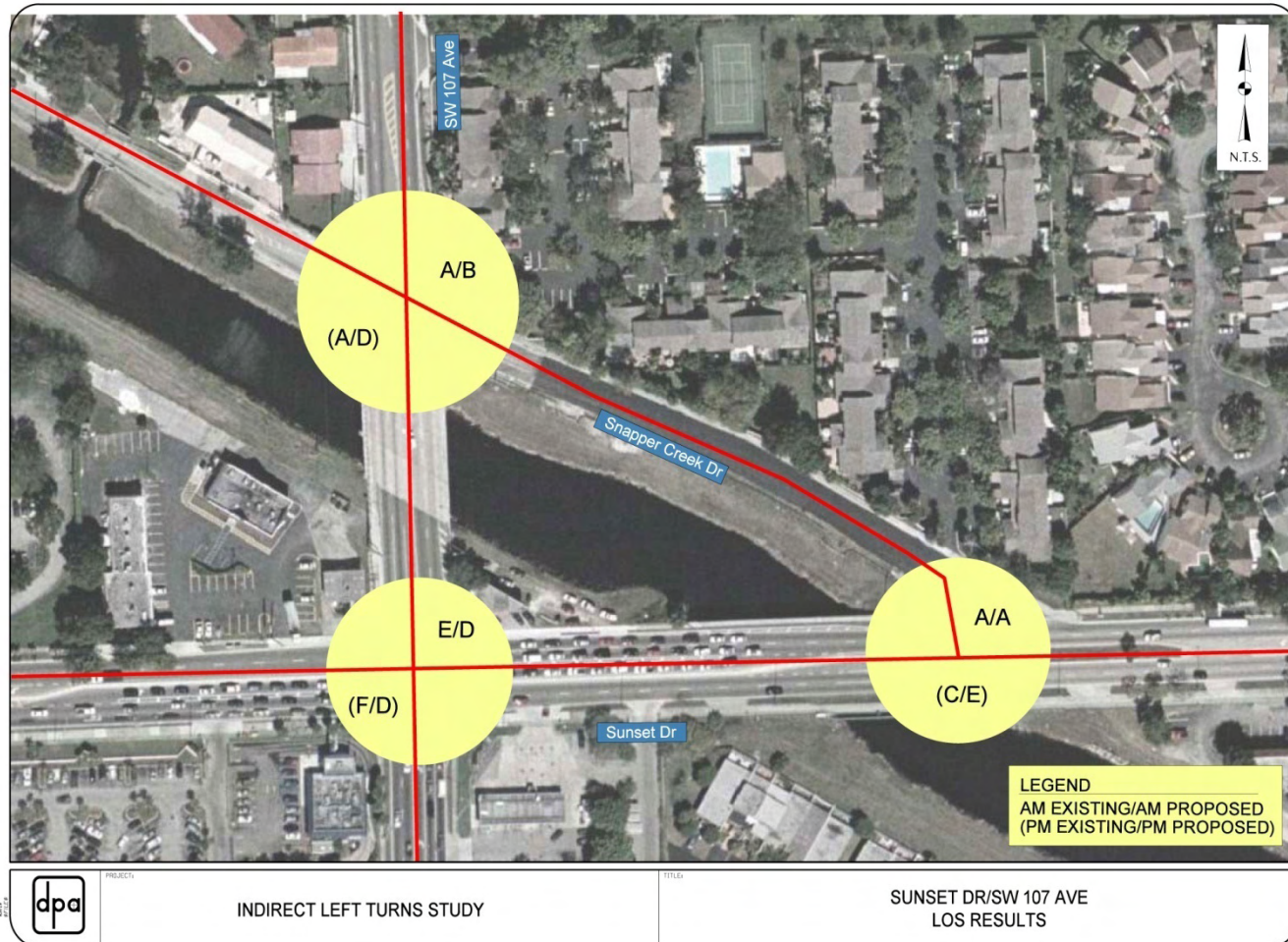


SUNSET DR/SW 107 AVE

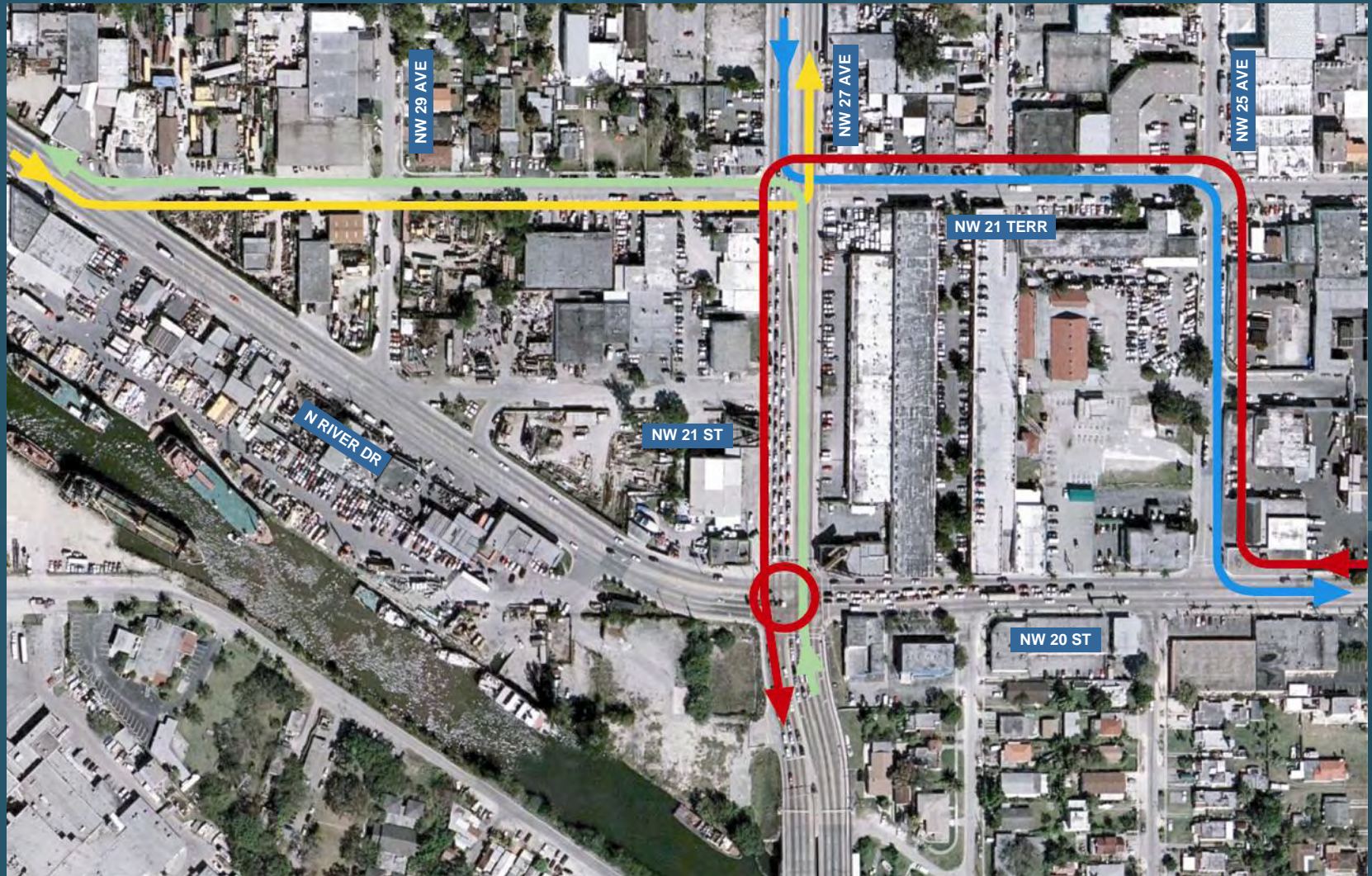


**Indirect Left Turns Study
Evaluation of Alternatives
Sunset Dr/SW 107 Ave
Delay (sec/veh)**

Intersection	AM Peak				PM Peak			
	Before	After	Recom.	Change	Before	After	Recom.	Change
Sunset Dr/SW 107 Ave	79	58	51	-28	109	70	50	-59
Sunset Dr/N Snapper Creek Dr	9	8	8	-1	21	123	72	51
SW 107 Ave/N Snapper Creek Dr	8	12	12	4	7	17	43	36
Network Total (Weighted)	42	31	28	-14	59	74	55	-4
Percent Change				-33%				-7%

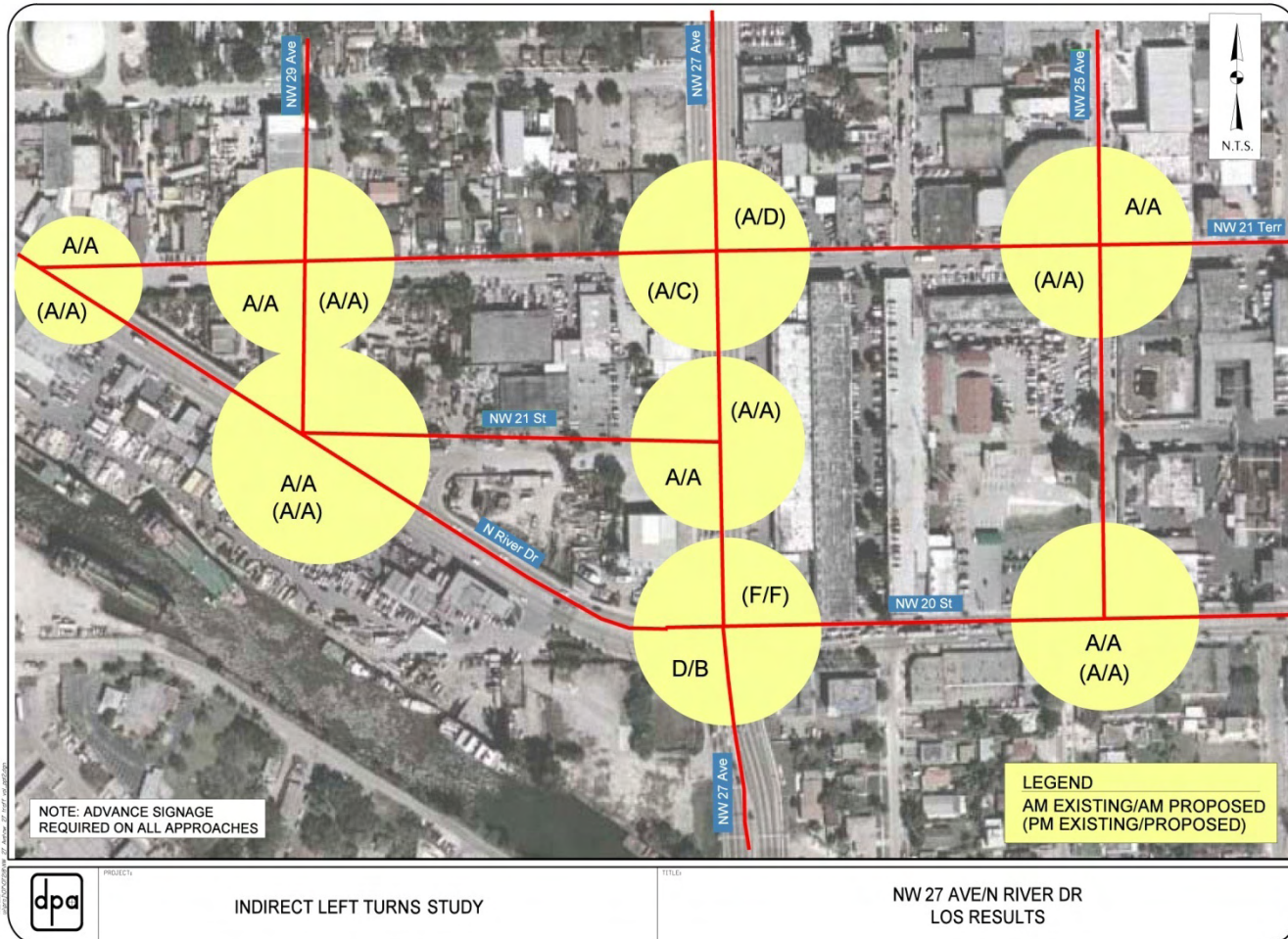


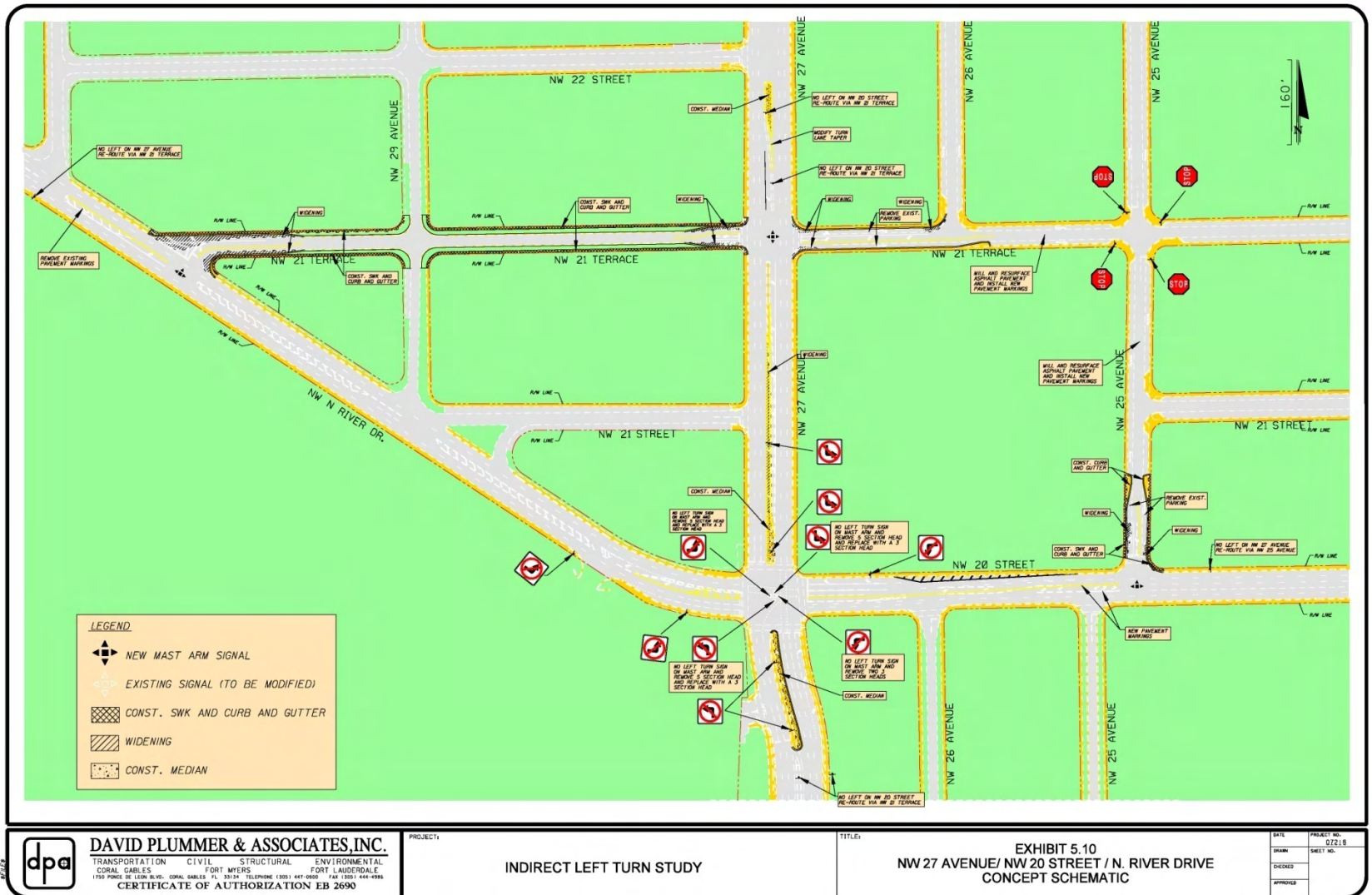
NW 27 AVE/ 20 ST/ NW N RIVER DR



**Indirect Left Turns Study
Evaluation of Alternatives
NW 27 Ave/20 St/N. River Dr
Delay (sec/veh)**

Intersection	AM Peak				PM Peak			
	Before	After	Recom.	Change	Before	After	Recom.	Change
NW 27 Ave/N. River Dr	48	19	18	-30	147	100	95	-52
N. River Dr/21 St	NA	NA	NA	NA	NA	NA	NA	NA
NW 27 Ave/21 St	NA	NA	NA	NA	NA	NA	NA	NA
NW 20 St/25 Ave	NA	7	7	NA	8	602	9	1
NW 27 Ave/21 Ter	263	1287	35	-228	370	1400	36	-334
N River Dr/21 Ter	NA	NA	6	NA	NA	NA	9	NA
NW 21 Ter/29 Ave	3	1	1	-2	4	2	2	-2
NW 21 Ter/25 Ave	3	10	10	7	3	19	19	16
Network Total (Weighted)	62	251	14	-48	119	381	37	-82
Percent Change	-77%				-69%			





Agency Coordination (Schematic Level)

- Miami-Dade Parks & Recreation
- Miami-Dade Public Works
- FDOT Scoping Committee

Estimated Cost

- SW 72 St/SW 107 Ave
\$130,000 – 200,000
- NW 27 Ave/NW 20 St/N. River Dr
\$1,010,000 – 1,180,000

Implementation

- Lead Agency
- Project Development
- Funding
- Design
- Bidding/Construction