

PRESENTATION

P.A.C./OMNI AREA ACCESS IMPROVEMENTS

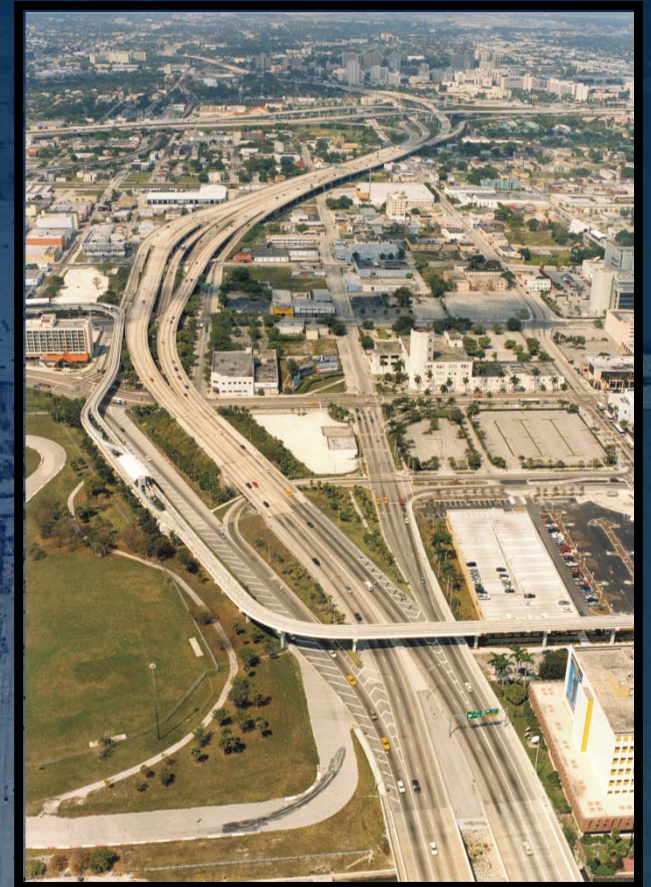
Presented to: I-395 MPO Sub-Committee
March 5, 2003



Metric Engineering Inc.

ISSUES

- Improve I-395/Local Access
- Provide Aesthetic Opportunities



ACCESS

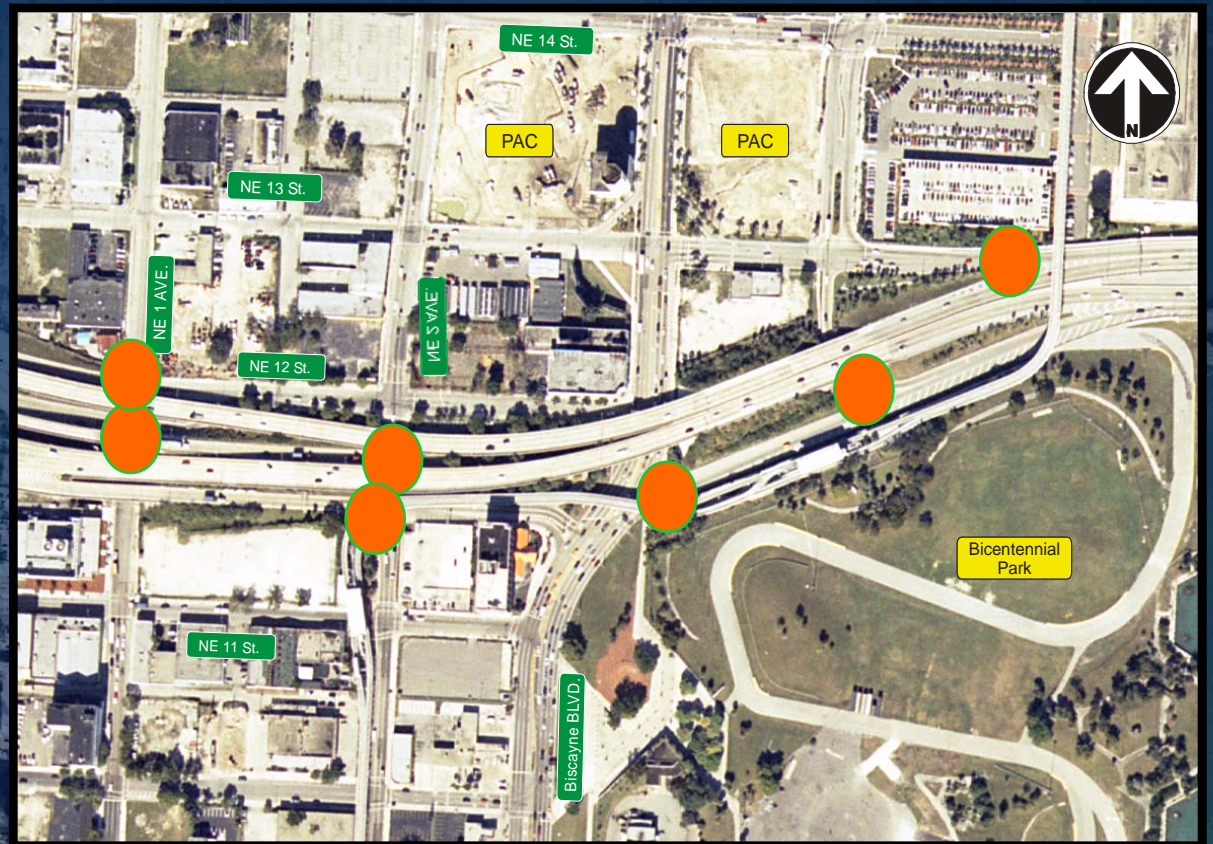
- Existing Access

- Exits

- NE 2nd Ave.
- NE 13th St.

- Entrances

- NE 1st Ave.
- Biscayne Blvd.
- Bayshore Dr.



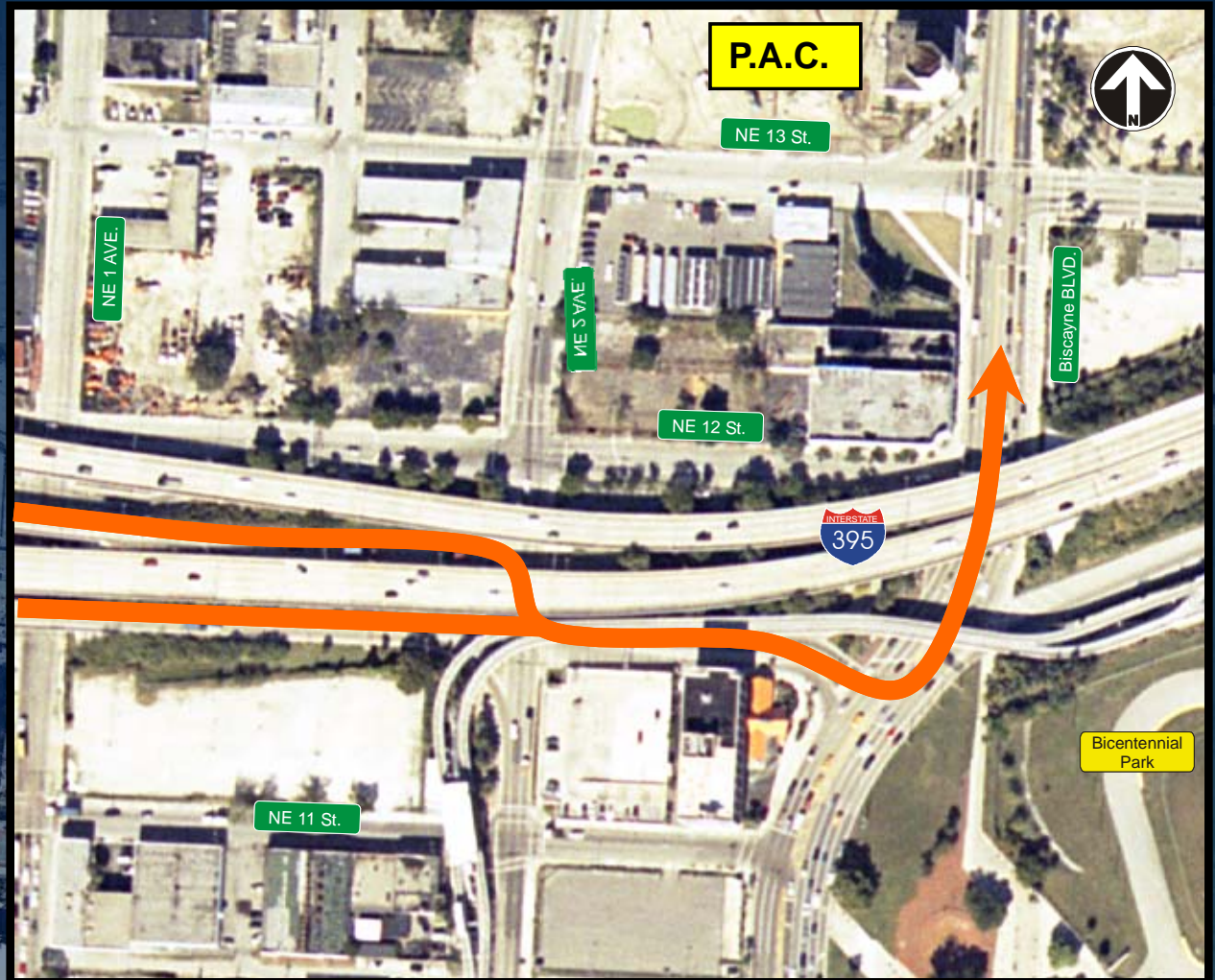
CIRCULATION

- Local Street
 - One-Way
 - NB
 - NE 1st Ave.
 - SB
 - NE 2nd Ave.



ACCESS

- Access
 - I-395 EB to NB Movement
 - Restricted to Biscayne Blvd.



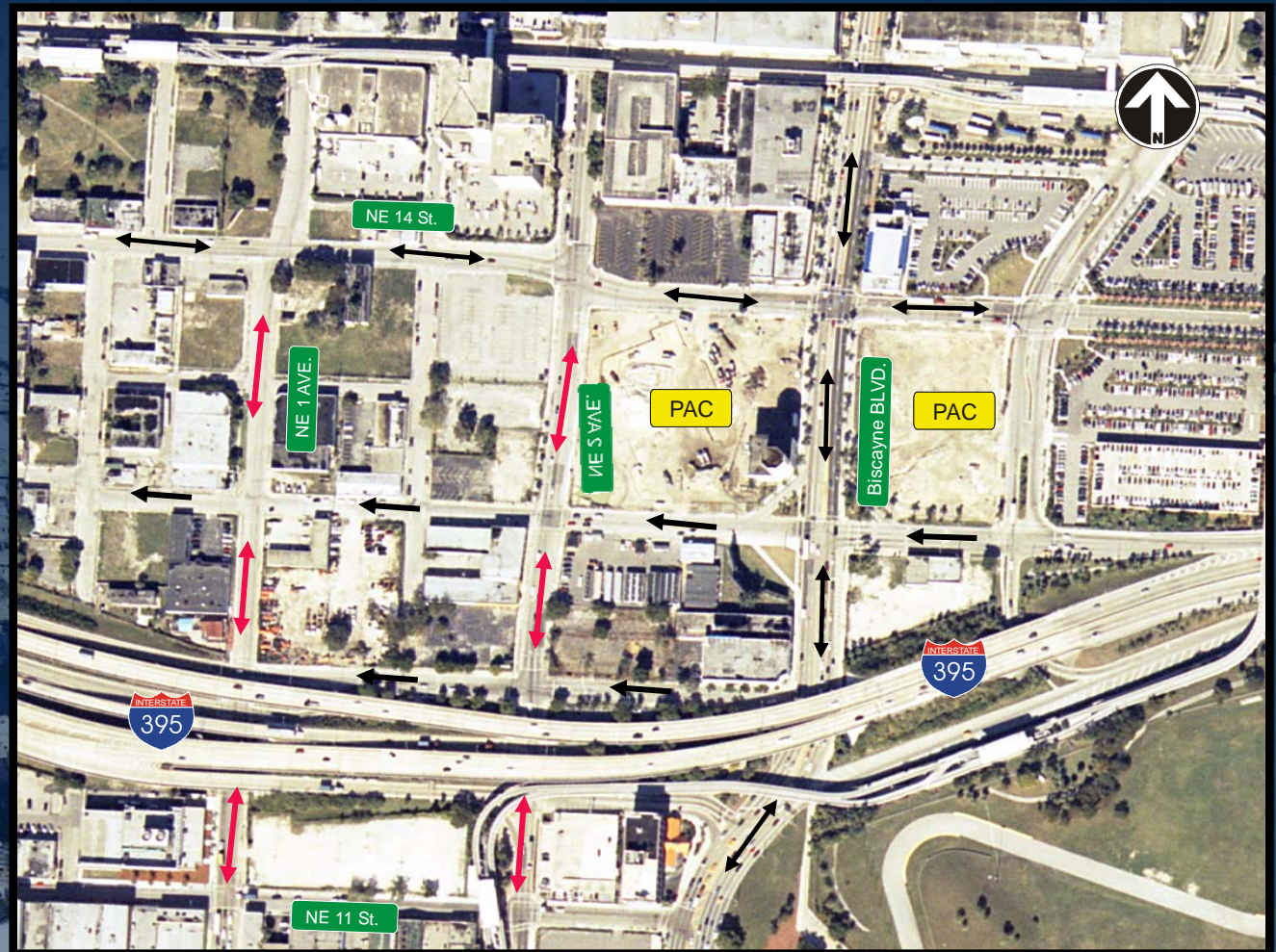
ACCESS

- To I-395 WB
 - From the North
 - NE 12th St.



ACCESS IMPROVEMENTS

- Local Street
– Two-Way

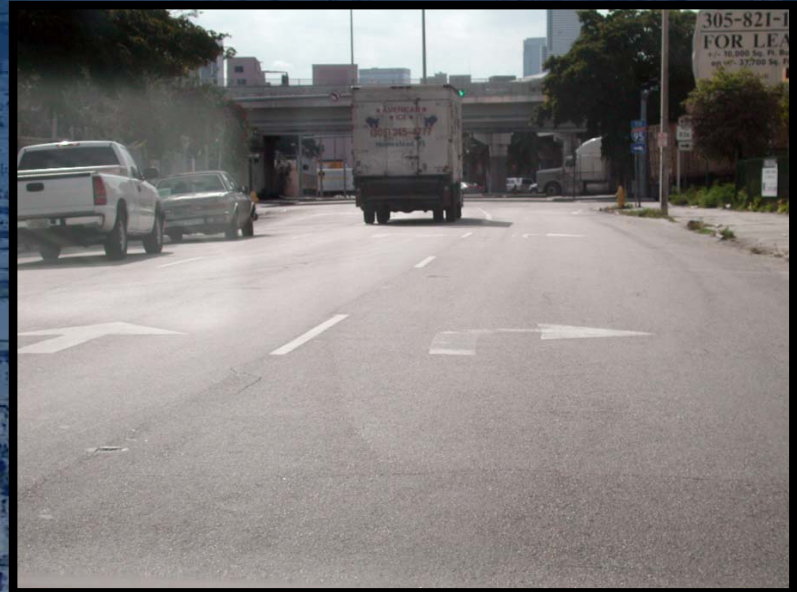


ACCESS IMPROVEMENTS

- Ample room for two-way street conversion



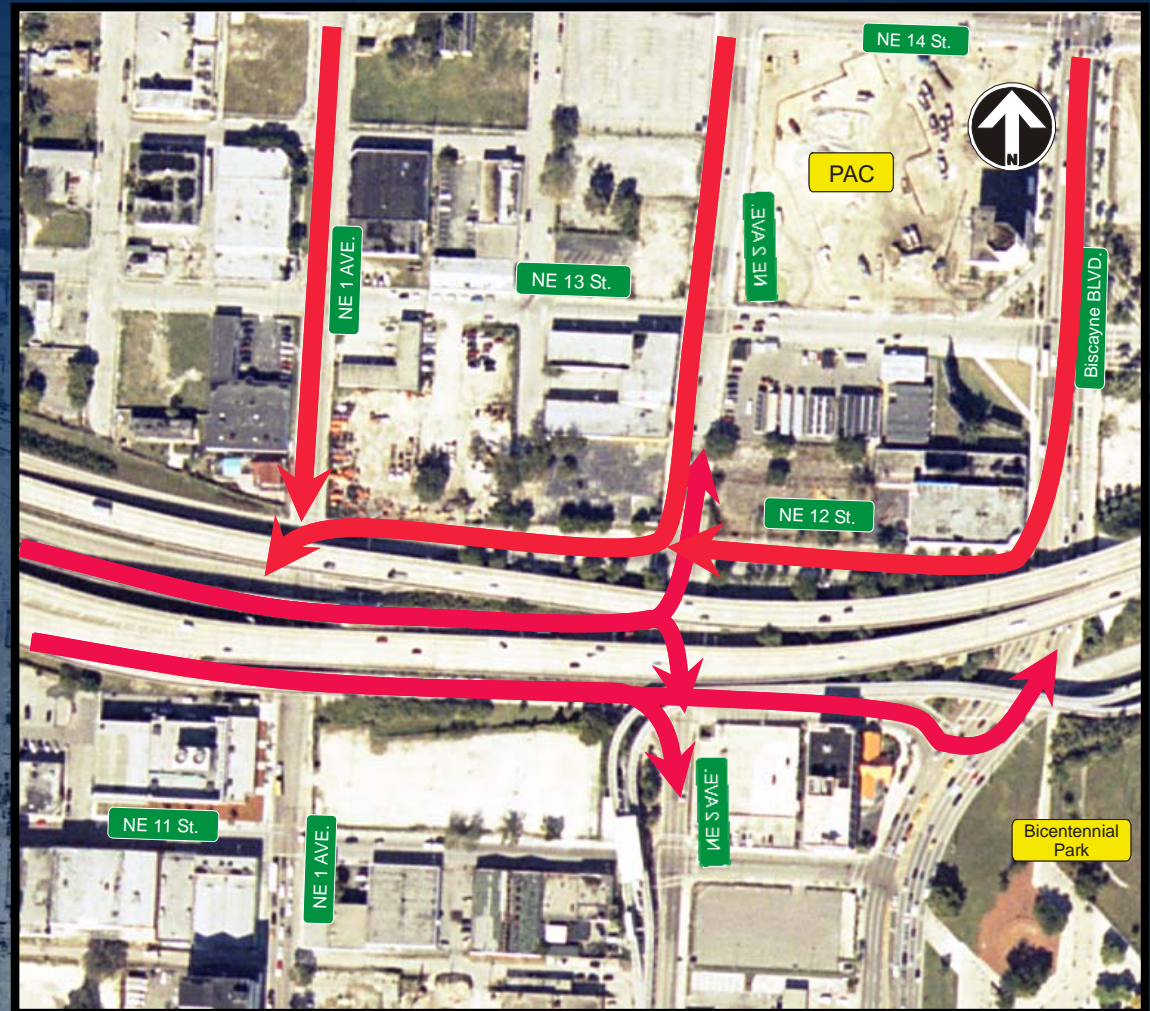
Northbound along NE 1st AVE



Southbound along NE 2nd AVE

ACCESS IMPROVEMENTS

- Separation of Traffic
 - SR 836 & I-95
- Outbound Movements
 - Via NE 1st Avenue & NE 12th Street



TRAFFIC IMPROVEMENTS

- Travel Time
 - From Omni Area to I-395 WB
 - Over 20% reduction
 - From I-395 WB to Omni Area
 - Over 20% reduction



BENEFITS

- Improved Access to/from the Performing Arts Center (PAC)
- Improved travel time to/from Omni area from/to I-395
- Alleviate traffic congestion for both event and non-event days
- Compatible with Downtown Miami's Transportation Master Plan



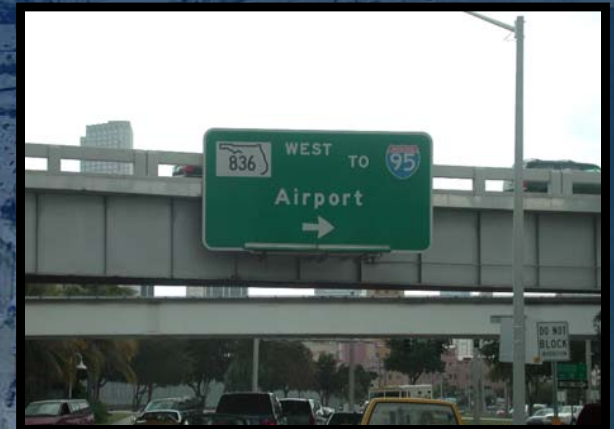
395

LANDSCAPING



SIGNAGE

- To Miami Beach
 - Southbound along Biscayne Blvd.
 - DEFICIENT!!!



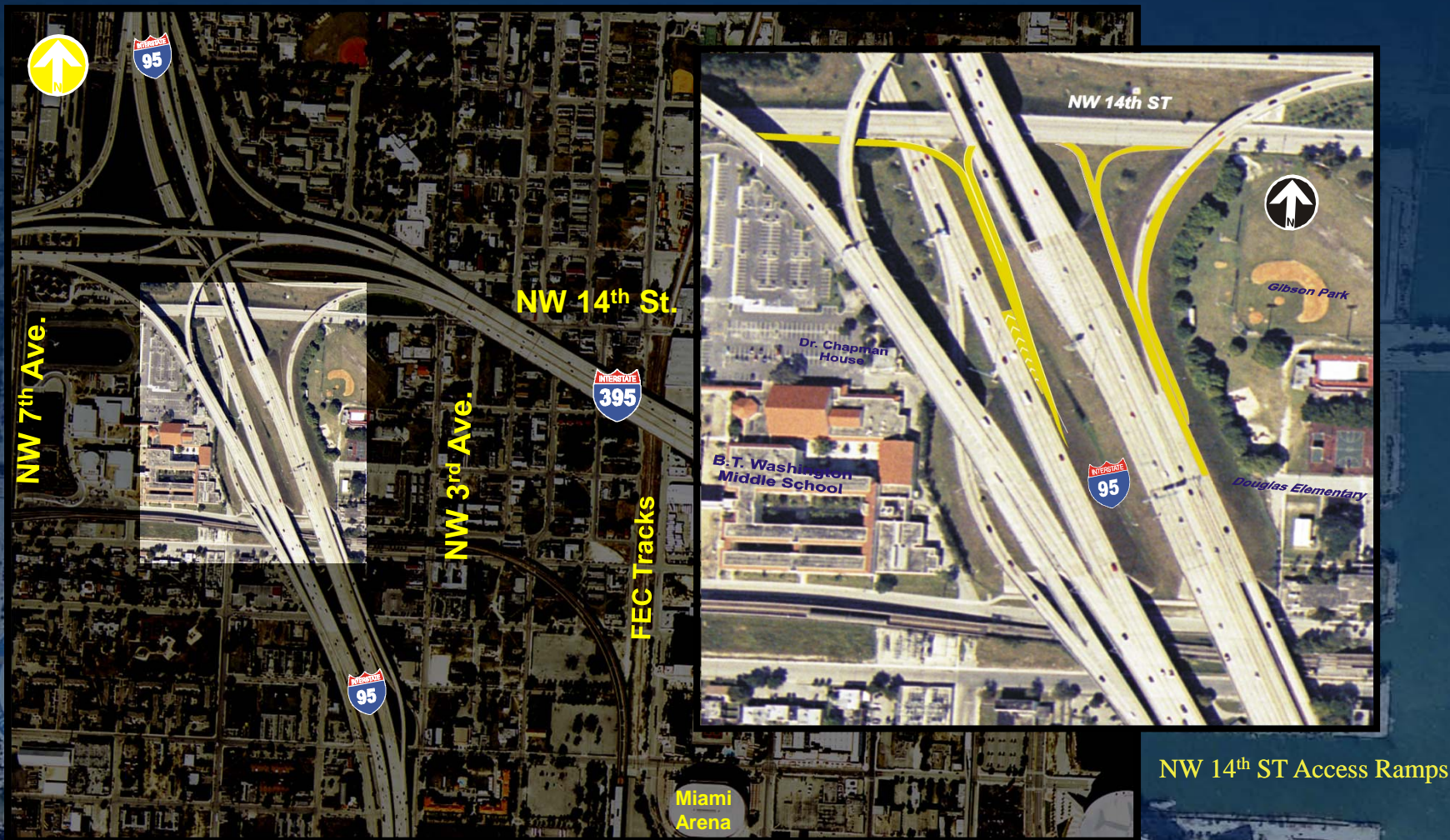
Southbound along Biscayne Blvd.

RECOMMENDATIONS

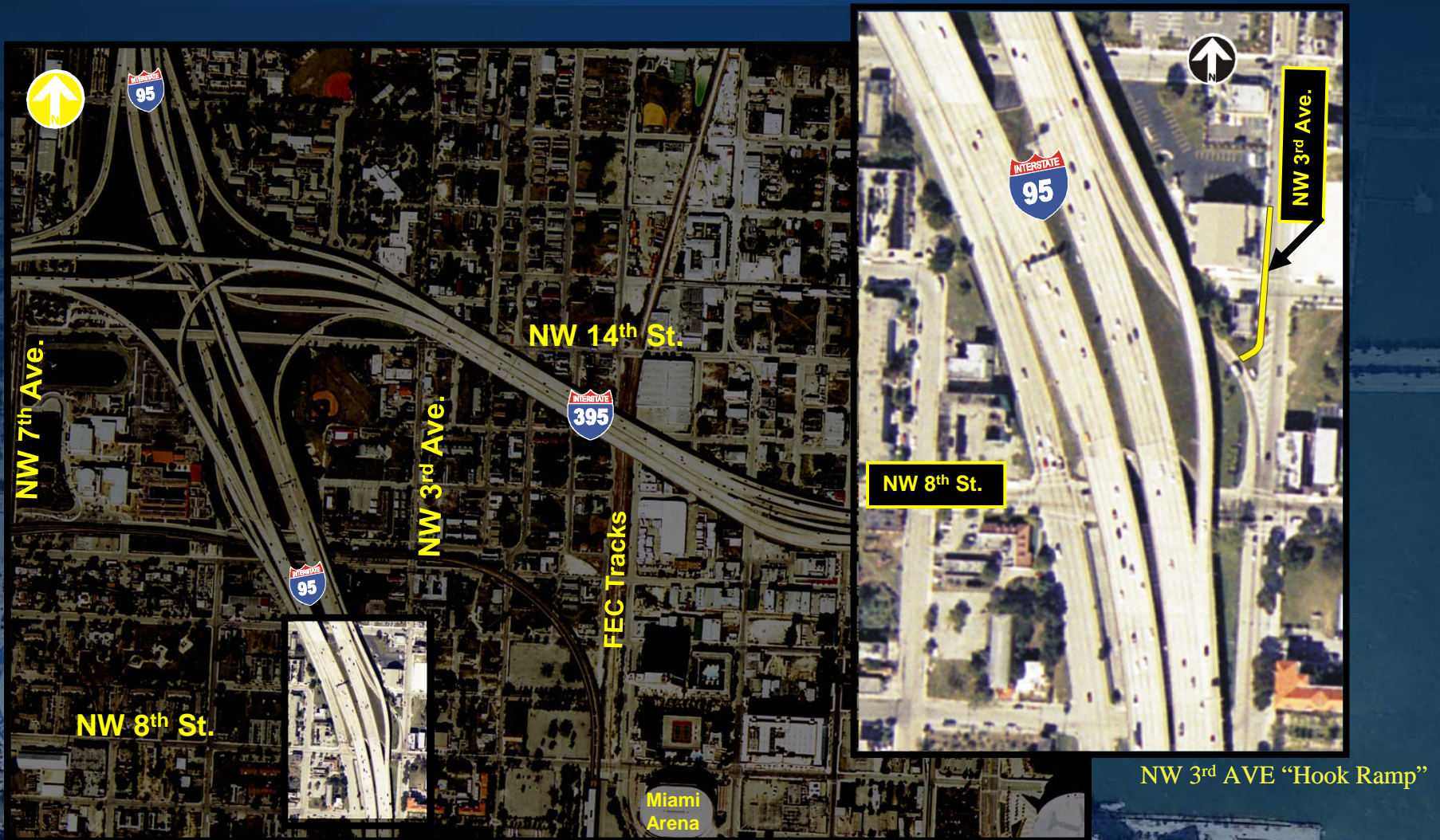
- Conversion of NE 1st & 2nd Avenue from one-way to two-way circulation between NE 11th St. & NE 14th St.
- Separation of I-395EB traffic originating from SR 836 & I-95. SR 836 traffic can utilize NE 2nd Ave. NB & I-95 traffic would continue to use NE 11th Ter. & Biscayne Blvd
- COST : \$700,000



OTHER IMPROVEMENTS



OTHER IMPROVEMENTS



NW 3rd AVE "Hook Ramp"