

# City of Homestead Downtown Area Transportation Plan Update



## Study Advisory Committee Meeting #1



Prepared by Metric Engineering, Inc. July 12, 2004







**City of Homestead  
Downtown Area Transportation Plan Update**

**Study Advisory Committee Meeting # 1**

**AGENDA**

**I. INTRODUCTIONS**

- Project Team
- S.A.C. Members

**II. OVERVIEW OF PROJECT**

**III. CURRENT PROJECT STATUS**

- Tasks performed to date
- Remaining Tasks

**IV. SET STUDY PRIORITIES**

- Overview of Previous Studies & Recommendations
- Explanation of Transportation Priorities Survey

**V. COMMITTEE MEMBERS' FEEDBACK**

**VI. ADJOURNMENT**

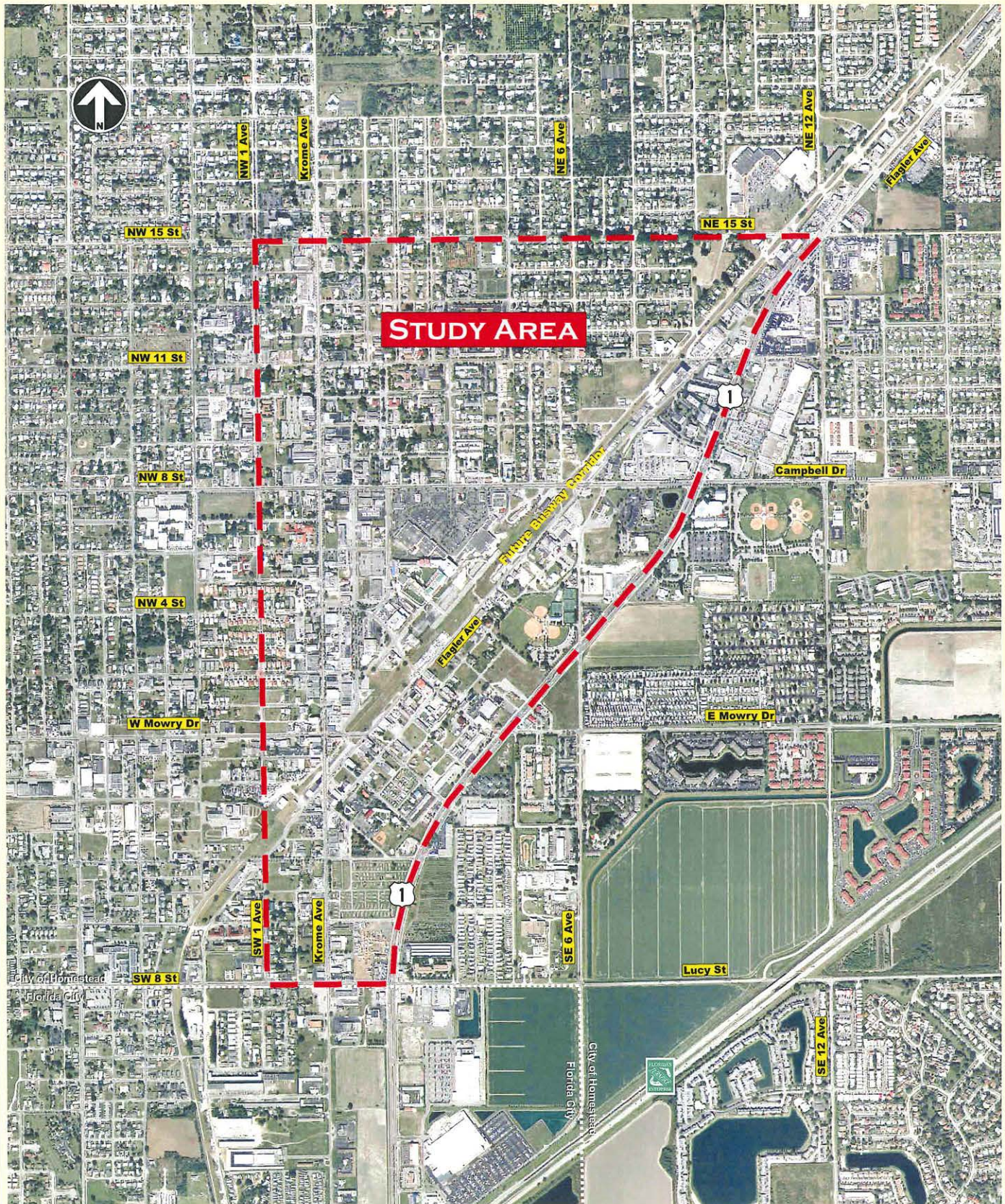






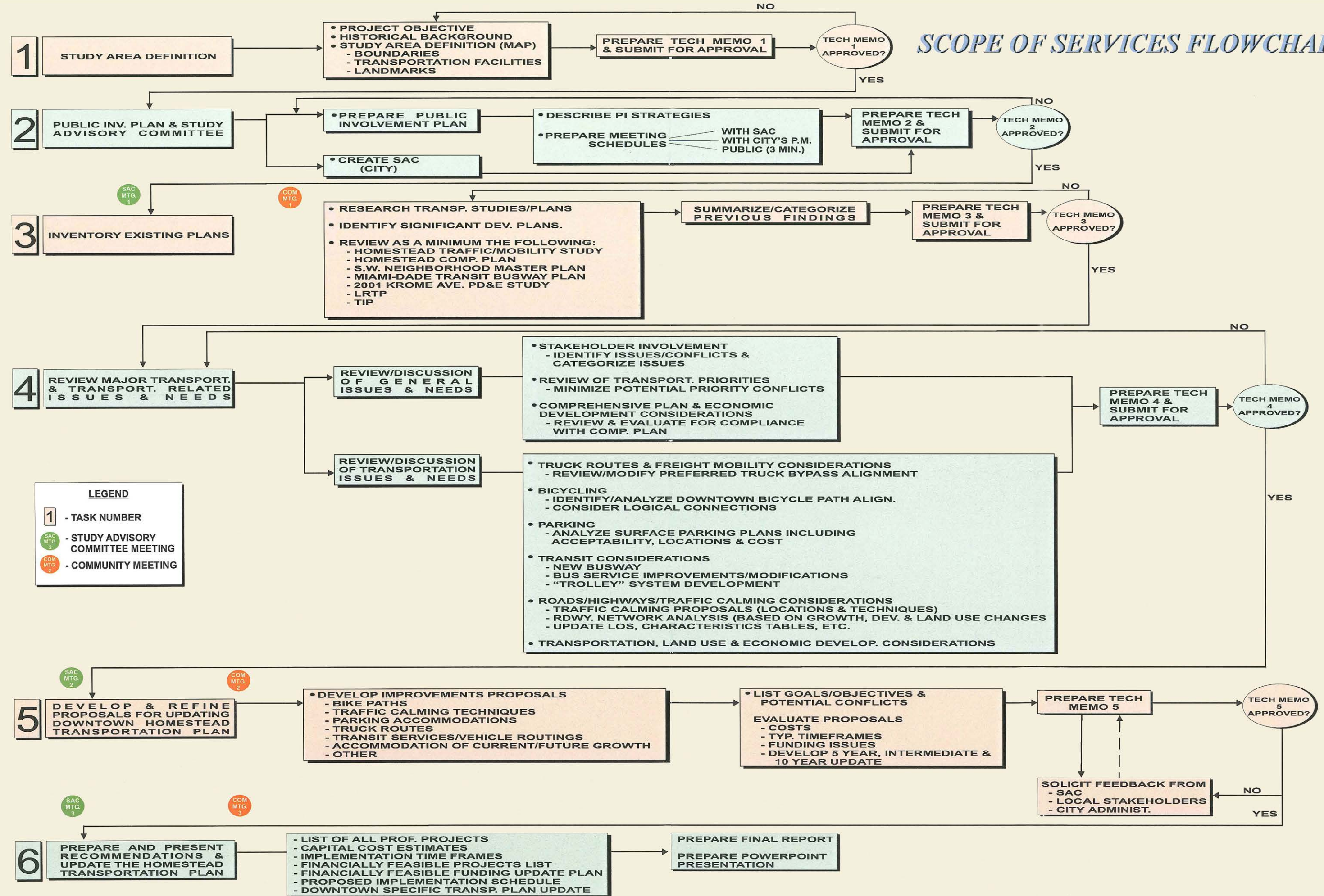
# CITY OF HOMESTEAD DOWNTOWN AREA TRANSPORTATION PLAN UPDATE

## LOCATION MAP



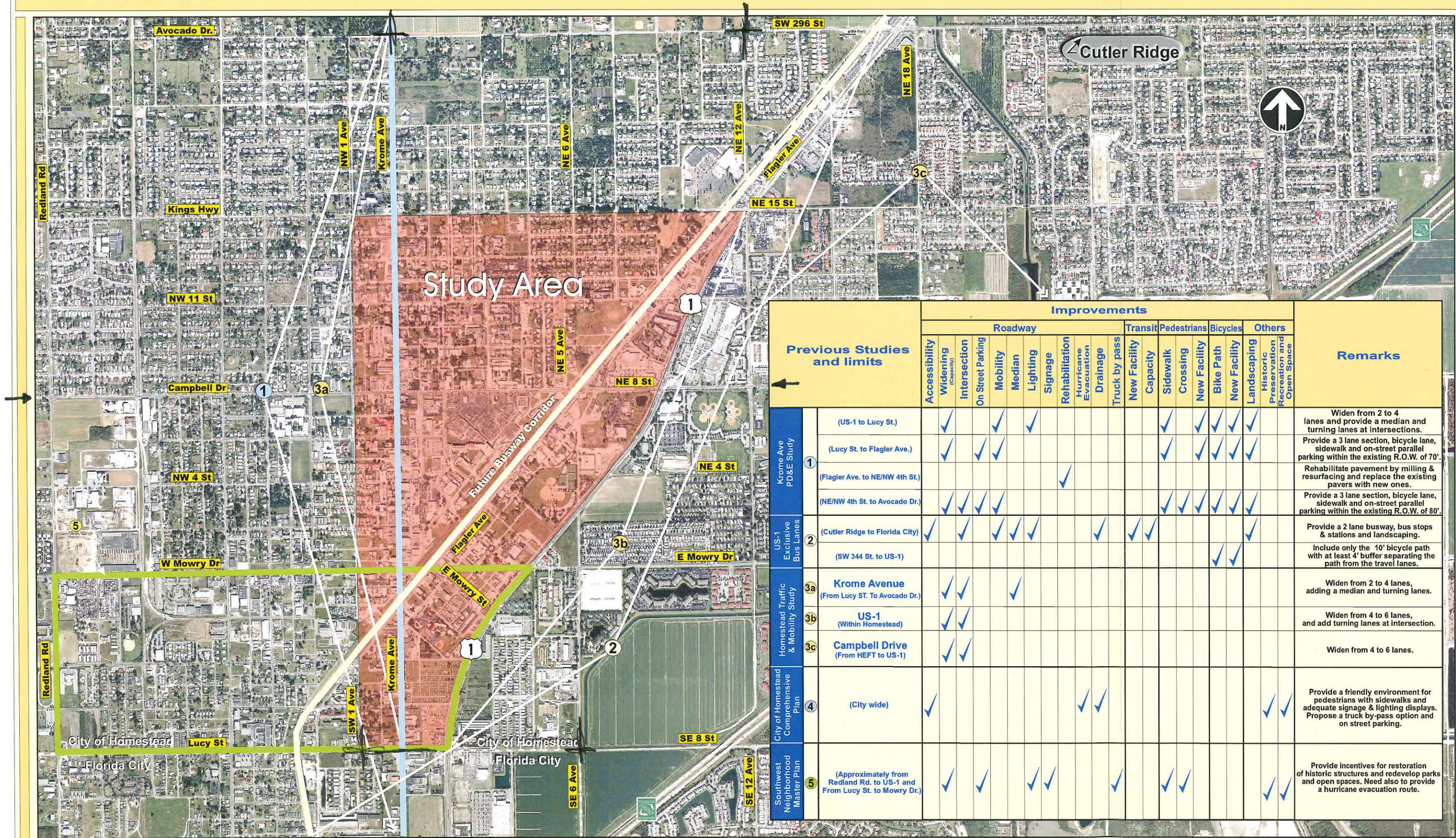


SCOPE OF SERVICES FLOWCHART



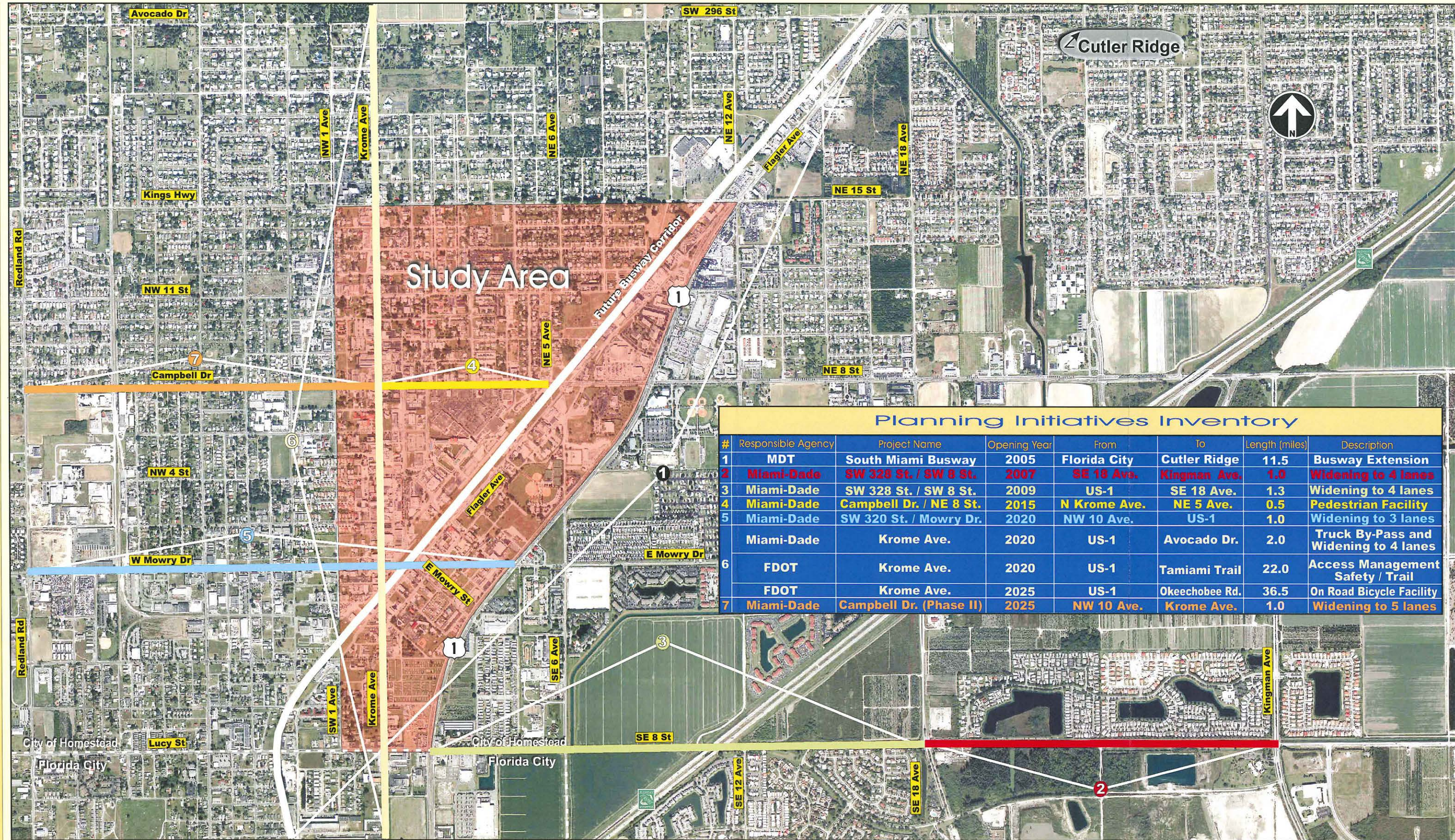


# CITY OF HOMESTEAD PREVIOUS STUDY RECOMMENDATIONS





# DOWNTOWN HOMESTEAD PLANNING INITIATIVES INVENTORY





## **Downtown Homestead Transportation System Priority of Goals Survey**

The purpose of the survey is to assist the city in establishing a prioritized list of transportation-related projects for the downtown Homestead area. In doing so the goal is to establish an implementation schedule by which to obtain the necessary funding and a construction timeline for all pertinent projects.

The list of potential improvements is organized into 4 distinct categories. Please assign a rating between 1 and 5 to each item. A rating of 5 represents a high priority improvement, while a rating of 1 would be considered a low priority improvement.

		<b>PRIORITY</b>					
		1	2	3	4	5	
		Low	Moderate			High	
<b>1)</b>	<b>Roadway</b>						
	a. Truck-by-pass of Downtown						_____
	b. Improve Roadway Drainage						_____
	c. Facilitate Hurricane Evacuation						_____
	d. Improve Roadway Signage						_____
	e. Improve Roadway Lighting						_____
	f. Improve Local and Regional Mobility						_____
	g. Provision of Additional Parking Spaces						_____
	h. Increase Local Street Network Capacity						_____
<b>2)</b>	<b>Transit</b>						
	a. Enhance Current Transit System (i.e. Buses)						_____
	b. Provide New Transit Opportunities						_____
<b>3)</b>	<b>Pedestrians</b>						
	a. Provide New Sidewalks						_____



b. Enhance Existing Corridors (i.e. wider sidewalks,  
improved landscaping) \_\_\_\_\_

**4) Bicycles**

a. Provision of New Bike Paths (Connect to Existing) \_\_\_\_\_

b. Enhance Existing Corridors (i.e. provision of dedicated  
on-street facilities) \_\_\_\_\_

**General Comments:**

---

---

---

---

---

---





Metric Engineering, Inc.