

AUGUST 2017

Bike Friendly Miami-Dade Program Report



PREPARED FOR
Miami-Dade
Transportation
Planning Organization



PREPARED BY
MARLIN Engineering, Inc.
15600 SW 288th Street, Ste. 208
Miami, FL 33033
P: 305.477.7575
www.marlinengineering.com

MARLIN

CONTENTS

Overview 1

 City & Community Outreach.....2

 March 2017 Community Submittals.....2

 Business outreach.....3

 March 2017 Business Submittals.....3

Miami-Dade Bike Friendly Summit.....4

Snap-shot of Miami-Dade Bike-Friendly Designations.....6

Special Thanks.....6

LIST OF FIGURES

FIGURE 1 Bicycle Friendly America Brochure	1
FIGURE 2 Miami-Dade Bicycle Friendly Team and Partners	1
FIGURE 3 Bike Friendly Summit Activation	1
FIGURE 4 Miami-Dade Bike Friendly Summit Audience.....	2
FIGURE 5 Miami-Dade TPO Facebook Page	2
FIGURE 6 Bicycle Friendly Business Bronze Seal.....	2
FIGURE 7 Bicycle Friendly Business Slideshow Cover.....	3
FIGURE 8 Miami Shores Bicycle Friendly Presentation	3
FIGURE 9 Bicycle Friendly Business Flyer	3
FIGURE 10 Miami-Dade Bike Friendly Summit Flyer	4
FIGURE 11 Miami-Dade Bike Friendly Summit Panel 1 Speakers.....	4
FIGURE 12 Bike Friendly Summit Activation and Information Sharing.....	4
FIGURE 13 Bike Friendly Summit Panel 2 Speakers	5
FIGURE 14 Bike Friendly Partner Interview	5
FIGURE 15 Bike Friendly Summit Attendees in Activation Area	5
FIGURE 16 Miami-Dade Commissioner Daniella Levine Cava	5

LIST OF TABLES

Table 1: Current Miami-Dade Community designations	6
Table 2: Current Miami-Dade Business Designations	6
Table 3: Current Miami-Dade University Designations	6
Table 4: Current Miami-Dade Applications In-Process	6

APPENDICES

- Appendix A – Summit Evaluations
- Appendix B – Bicycle Friendly Collateral
- Appendix C – Summit Attendance
- Appendix D – Bicycle Friendly Outreach
- Appendix E – Miami-Dade BFC Application

Overview

The Miami-Dade Transportation Planning Organization (TPO) is pursuing a Bicycle Friendly CommunitySM designation from the League of American Bicyclists (LAB). Since the 1990s, the LAB has been administering the Bicycle Friendly AmericaSM (BFA) program. The BFA provides any American community (BFCSM), business (BFBSM), and university (BFUSM) with the opportunity to obtain an official Bicycle Friendly designation by submitting an application to the LAB. Applications are evaluated and scored by internal LAB staff and local bicycle advocates within the applicant's community. Bicycle Friendly designations range from Bronze to Diamond and last for 4 years. Applicants that do not receive a designation may receive an Honorable Mention.

Progress towards creating a better bicycling environment in a community are measured by more than existing infrastructure in the community. Florida ranks #24 in the country for being Bicycle Friendly. At the onset of this initiative, 21 Communities, 51 businesses, and 4 Universities in Florida were designated as Bicycle Friendly. Measures related to bicycling within the BFA criteria involve evaluating the 5 E's which are summarized below.

Engineering – Evaluates existing bicycle infrastructure such as bike lanes, trails, signage, bike parking, and other amenities.

Education – Evaluates ability and willingness to educate constituents about current bicycle laws and proper safety measures.

Encouragement – Evaluates ability to promote bicycling usually through special events and/or incentive programs.

Enforcement – Evaluates current police policy regarding how law enforcement officers engage and interact with bicyclists.

Evaluation & Planning – Evaluates short, medium, and long-term planning and data collection practices.



FIGURE 1

Cover of Bicycle Friendly America brochure. LAB'S website provides any interested entity with an assortment of literature, slideshow presentations, and collateral materials to assist a group's Bicycle Friendly campaign.



FIGURE 2

Miami-Dade Bicycle Friendly team and partners (From top-left to bottom-right) Eric Katz, Marlin; Monica Diaz, Infinite Source Communications; Richard Denis, Infinite Source Communications; Sue Kawalerski, Bike 305; Jennifer Garcia, Bike Walk Coral Gables; David Henderson, Miami-Dade Transportation Planning Organization



FIGURE 3

Activation activities at the Miami-Dade Bike Friendly Summit included free test rides of new electric powered bicycles

City & Community Outreach

In addition to leading the application development for Miami-Dade County, the TPO initiative made an effort to encourage other Miami-Dade entities to apply for designation. Primary methods of community outreach involved developing collateral materials and sharing them through on-line and social media platforms, informal meetings, and providing formal presentations to interested stakeholder groups.

Cities throughout Miami-Dade County were contacted to develop interest in pursuing a Bicycle Friendly designation. Some cities had previous knowledge of the BFA designation program, while other cities were unaware of the opportunity. Each city had different points of contact for the initiative. In some cases, the effort was handled by the Public Works department, in other cities it was handled by the Economic Development office, and still in others the mayor or elected officials took the lead. In one case, the local bicycle advocacy organization led application development.

March 2017 Community Submittals

The City of Miami Beach was designated as Bicycle Friendly in 2003 and renewed their designation this year. For this round, the city's planning department took the lead on the application and Miami Beach was awarded a Silver designation.

The City of Miami previously held a Bronze level designation and was due for renewal. The city's Bicycle and Pedestrian Coordinator developed its renewal application in 2016, and the city was re-awarded the Bronze designation.

The City of Miami Shores submitted its first BFC application, and was awarded a Bronze designation. The application was developed by the city's Public Works Department.



FIGURE 4
Miami-Dade Bike Friendly Summit audience

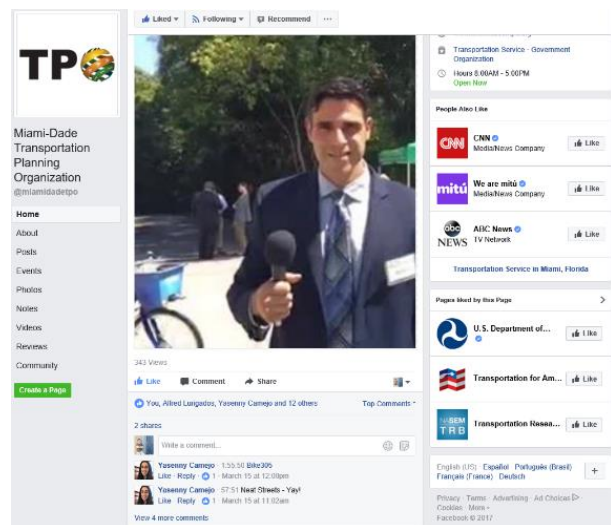


FIGURE 5
TPO facebook page covering the Bike Friendly Summit



FIGURE 6
Bicycle Friendly Business Official Designation Seal

Business outreach

In addition to municipal outreach, Miami-Dade businesses were also encouraged to apply. Bicycle Friendly designations have a great chance of success if the effort is undertaken by an entire business district. Many types of entities are considered to be businesses for the purposes of the Bicycle Friendly designation, so in addition to traditional businesses, locations such as museums, parks, gyms, and sporting venues were also contacted during outreach.

Providing information to the business community required extensive efforts in identifying business organizations such as Chambers of Commerce and business expos where BFA information could be provided to large groups of businesses at once. The goal of this outreach was to reach the appropriate members of the business community in their own networking circles to build interest in the BFA initiative. Outreach was also conducted with many community organizations to build a grassroots interest in the Bicycle Friendly efforts.

March 2017 Business Submittals

Mack Cycle & Fitness is a local bicycle shop located in South Miami and was originally designated as the only Gold business in the entire state of Florida. Mack Cycle submitted an updated application in March of 2017 and was upgraded to become the only Platinum designated business in the state of Florida.

West Kendall Baptist Hospital's Healthy West Kendall Initiative is a collective group of local residents, public health officials, planners, environmentalists, engineers, and business owners engaged in improving the health and quality of life of Miami-Dade's West Kendall community. The Healthy West Kendall group applied on behalf of the hospital, with further assistance provided by the Miami-Dade TPO. The hospital submitted their application in March of 2017 and was awarded a Bronze level designation.

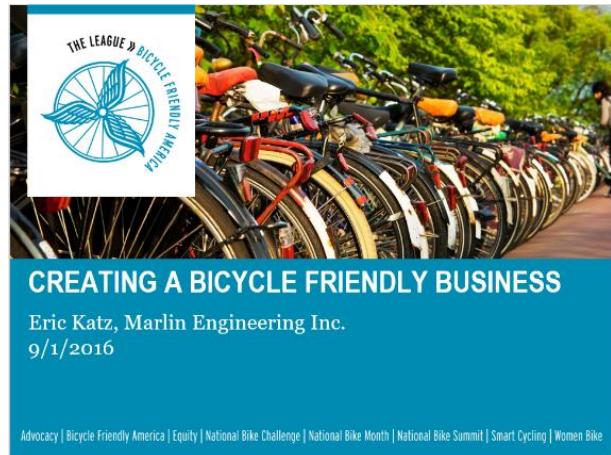


FIGURE 7
Bicycle Friendly Business slideshow presentation



FIGURE 8
Presentation delivered to Miami Shores Chamber of Commerce

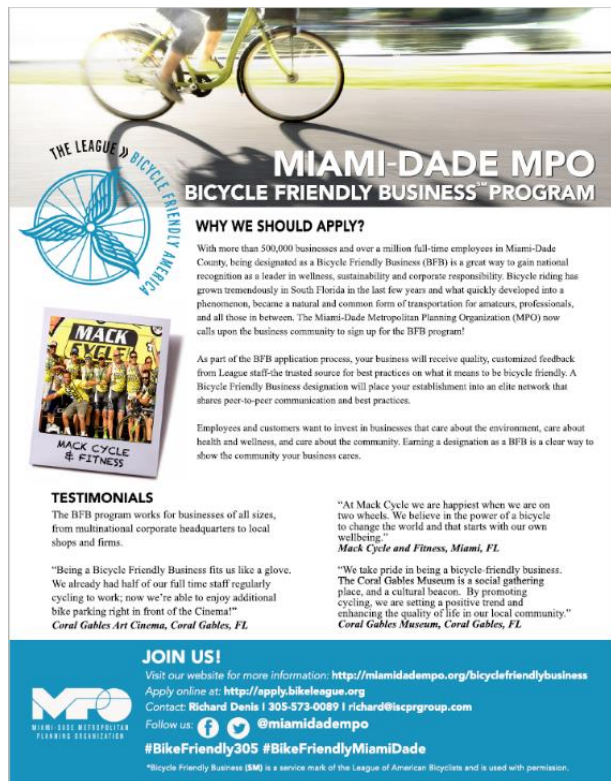


FIGURE 9
Bicycle Friendly Business Flyer

Miami-Dade Bike Friendly Summit

The TPO provided an opportunity for the Miami-Dade community to attend a programmed Bicycle Friendly event. The goal was to provide interested parties with a forum to learn and share valuable information that would assist in their Bicycle Friendly application development. The first ever Miami-Dade Bike Friendly Summit was held on March 15, 2017. The event was held at Vizcaya Museum & Gardens and was attended by over 100 participants. The summit program was developed by an official Bike Friendly Summit Committee comprised of representatives from local government agencies, community bicycle advocacy groups and clubs, local law enforcement, elected officials, and bicycle-related businesses.

Event sponsors, speakers and panelists, featured entities including, Miami-Dade County, Mack Cycle and Fitness, Starbucks, Saris, Bike 305, Bike Walk Coral Gables, Citi Bike, The Underline, Ludlam Trail, Plan Z, Green Mobility Network, The Miami Foundation, University of Miami, Jackson Memorial Hospital and numerous public officials, all sharing best practices that aided in their efforts to become Bicycle Friendly.

The summit began with a special video welcome from the Executive Director of the League of American Bicyclists. The core of the program featured two panel discussions. The first panel focused on best practices from current Bicycle Friendly Community, Business and University designees. The second panel was a more detailed discussion breaking down the 5E's, with industry experts in each area discussing specific issues pertaining to their area of knowledge. For example, Chief Charles Press of Key Biscayne Police Department explained to the audience how their officers interact with local bicyclists in a fair and equitable way.



FIGURE 10
Miami-Dade Bike Friendly Summit Flyer



FIGURE 11
Summit panel 1 speakers from left to right: Collin Worth, City of Miami; Mary Jane Mark, Mack Cycle & Fitness; Lluvia Resendiz, University of Miami



FIGURE 12
Summit committee partners sharing information about local bicycle initiatives

Other speakers were in attendance to offer information regarding ongoing grant programs and community initiatives that could complement an entity's effort to become more Bicycle Friendly. For example, The Miami Foundation's Public Space Challenge grant could potentially sponsor the costs of a pop-up *Ciclovía* event for a local community which helps encourage more bicycle ridership and also scores points on their Bicycle Friendly application. Finally, TPO representatives had staff on hand to provide on-the-spot feedback and support for anyone currently working on a Bicycle Friendly application and had a specific question. Appendices B, C, and D provide details regarding official Summit programming collateral, evaluations, and attendance.

Facebook Live broadcasting: Stakeholders interested in the Summit who could not attend in person could participate via Facebook Live. During the Summit, Facebook Live reached over 340 views. The TPO media team were not only documenting the event with pictures and videos, but also engaged with the participants asking for feedback regarding their thoughts of Miami-Dade County's pursuit to become Bicycle Friendly.

Summit Testimonials: Immediately after the Summit, evaluation forms were provided to all participants. Below are excerpts of some of the testimonials provided:

"Valuable information and great format to provide multi-modal solutions." – **Peter Tyler**

"This event helps us in Miami Shores to underscore the action plan to make an 85-year-old built-out residential community to be more bike friendly..."
– **Mayor Alice Birch**

"Thank you for the opportunity to present it was very informative." – **Frank Ruiz**



FIGURE 13
Summit panel breaking down the 5 E's



FIGURE 14
Panelists shared information with hundreds of participants on-site and online, via Facebook live



FIGURE 15
Summit activation area



FIGURE 16
Miami-Dade Commissioner Daniella Levine Cava offering a Call-to-Action to Summit participants

Snap-shot of Miami-Dade Bike-Friendly Designations

Current Miami-Dade Community Designations		
Name	Name	Name
Key Biscayne	Key Biscayne	Key Biscayne
Miami	Miami	Miami
Miami Beach	Miami Beach	Miami Beach
Miami Shores	Miami Shores	Miami Shores

Table 1: Current Miami-Dade Community designations

Current Miami-Dade Business Designations		
Name	City	Level
Coral Gables Art Cinema	Coral Gables	Bronze
The Coral Gables Museum	Coral Gables	Silver
Arquitectonica International Inc.	Miami	Bronze
Dover, Kohl & Partners	Coral Gables	Silver
Mack Cycle and Fitness	South Miami	Platinum
West Kendall Baptist Hospital	Miami-Dade	Bronze
Dade Heritage Trust	Miami	Silver

Table 2: Current Miami-Dade Business Designations

Current Miami-Dade University Designations		
Name	City	Level
University of Miami	Coral Gables	Bronze

Table 3: Current Miami-Dade University Designations

Current Miami-Dade Applications In-Process		
Name	Jurisdiction	Level
Miami Dade County	County	TBA
Doral	Town/City/Municipality	TBA
Cutler Bay	Town/City/Municipality	TBA
Palmetto Bay	Town/City/Municipality	TBA
South Miami	Town/City/Municipality	TBA

Table 4: Current Miami-Dade Applications In-Process

Special Thanks



Miami-Dade Transportation Planning Organization

APPENDIX A – SUMMIT EVALUATIONS



Miami-Dade Bike Friendly Summit Evaluation Form

Name Tyler Peter Date 3/15/2017
Email tyler.peter@dcd.state.fl.us Phone 305-470-5393

Please circle the response you most agree with.

1. The event fulfilled the purpose that was proposed?

Strongly agree

Agree

Somewhat agree

Disagree

Strongly disagree

2. The event met my goals?

Strongly agree

Agree

Somewhat agree

Disagree

Strongly disagree

3. I recommend this event be held again in the future?

Strongly agree

Agree

Somewhat agree

Disagree

Strongly disagree

4. Please provide any additional comments regarding the event below.

Valuable information and great format to promote
multi-modal solutions

Miami-Dade Bike Friendly Summit Evaluation Form

Name FRANK ROUSSON Date 3/15/17
Email FRONASON@NBVILLAGE.COM Phone 305-299-7300

Please circle the response you most agree with.

1. The event fulfilled the purpose that was proposed?

Strongly agree

Agree

Somewhat agree

Disagree

Strongly disagree

2. The event met my goals?

Strongly agree

Agree

Somewhat agree

Disagree

Strongly disagree

3. I recommend this event be held again in the future?

Strongly agree

Agree

Somewhat agree

Disagree

Strongly disagree

4. Please provide any additional comments regarding the event below.

THE MONTHLY MASS BIKE RIDES SHOULD BE A
TOPIC - REAL HEADACHE + EXPENSE FOR
MUNICIPALITIES.

Miami-Dade Bike Friendly Summit Evaluation Form

Name Alice Burch Miami Shores Date 3-15-17
Email aliceburch@msvfl.gov Phone 305 318 9578

Please circle the response you most agree with.

1. The event fulfilled the purpose that was proposed?

- ☒ Strongly agree
☐ Agree
☐ Somewhat agree
☐ Disagree
☐ Strongly disagree

2. The event met my goals?

- ☒ Strongly agree
☐ Agree
☐ Somewhat agree
☐ Disagree
☐ Strongly disagree

3. I recommend this event be held again in the future?

- ☒ Strongly agree
☐ Agree
☐ Somewhat agree
☐ Disagree
☐ Strongly disagree

4. Please provide any additional comments regarding the event below.

This event helps us in Miami Shores to
underscore the action plan to make an
85-yr- old built-out - residential community to
be more bike friendly. Every part of this program
makes us feel good about what we've accomplished
AND - very excited about our future plans!

Miami-Dade Bike Friendly Summit Evaluation Form

Name GUSTAVO GARAGORRY Date 3/15/2017
Email GUSTAVO.GARAGORRY@CITYOFMIAMI.COM Phone

Please circle the response you most agree with.

1. The event fulfilled the purpose that was proposed?

Strongly agree ✓

Agree

Somewhat agree

Disagree

Strongly disagree

2. The event met my goals?

Strongly agree ✓

Agree

Somewhat agree

Disagree

Strongly disagree

3. I recommend this event be held again in the future?

Strongly agree ✓

Agree

Somewhat agree

Disagree

Strongly disagree

4. Please provide any additional comments regarding the event below.

I think most important thing
100% prevent fatalities
this workshop meet and reinforce
this idea.

Miami-Dade Bike Friendly Summit Evaluation Form

Name Mary Y. Taylor, Town of Miami Date 3-15-17
Email mtaylor@townofmiami.com Phone 305 817 4541

Please circle the response you most agree with.

1. The event fulfilled the purpose that was proposed?

Strongly agree ☒

Agree ☐

Somewhat agree ☐

Disagree ☐

Strongly disagree ☐

2. The event met my goals?

Strongly agree ☒

Agree ☐

Somewhat agree ☐

Disagree ☐

Strongly disagree ☐

3. I recommend this event be held again in the future?

Strongly agree ☒

Agree ☐

Somewhat agree ☐

Disagree ☐

Strongly disagree ☐

4. Please provide any additional comments regarding the event below.

Miami-Dade Bike Friendly Summit Evaluation Form

Name Margaret Sotham Date 3/15/17
Email Margaretso@baphsthealth.net Phone 305-962-5606

Please circle the response you most agree with.

1. The event fulfilled the purpose that was proposed?

Strongly agree

Agree

Somewhat agree

Disagree

Strongly disagree

2. The event met my goals?

Strongly agree

Agree

Somewhat agree

Disagree

Strongly disagree

3. I recommend this event be held again in the future?

Strongly agree

Agree

Somewhat agree

Disagree

Strongly disagree

4. Please provide any additional comments regarding the event below.

Miami-Dade Bike Friendly Summit Evaluation Form

Name Caroline Parker Date _____
Email caroline@caralgabismuseum.org Phone ~~305 875~~ 603 8067

Please circle the response you most agree with.

1. The event fulfilled the purpose that was proposed?

Strongly agree

Agree

Somewhat agree

Disagree

Strongly disagree

2. The event met my goals?

Strongly agree

Agree

Somewhat agree

Disagree

Strongly disagree

3. I recommend this event be held again in the future?

Strongly agree

Agree

Somewhat agree

Disagree

Strongly disagree

4. Please provide any additional comments regarding the event below.

well-organized.

Miami-Dade Bike Friendly Summit Evaluation Form

Name Joan Shen Date 3/15/17
Email joan.shen@cityofdoral.com Phone 35-593-6686

Please circle the response you most agree with.

1. The event fulfilled the purpose that was proposed?

Strongly agree

Agree

Somewhat agree

Disagree

Strongly disagree

2. The event met my goals?

Strongly agree

Agree

Somewhat agree

Disagree

Strongly disagree

3. I recommend this event be held again in the future?

Strongly agree

Agree

Somewhat agree

Disagree

Strongly disagree

4. Please provide any additional comments regarding the event below.

Excellent Event!

Miami-Dade Bike Friendly Summit Evaluation Form

Name O. TOM RUIZ Date 3/18/17
Email truiz@miamigardens-fl.gov Phone 305-622-8000

Please circle the response you most agree with.

1. The event fulfilled the purpose that was proposed?

Strongly agree

Agree

Somewhat agree

Disagree

Strongly disagree

2. The event met my goals?

Strongly agree

Agree

Somewhat agree

Disagree

Strongly disagree

3. I recommend this event be held again in the future?

Strongly agree

Agree

Somewhat agree

Disagree

Strongly disagree

4. Please provide any additional comments regarding the event below.

Miami-Dade Bike Friendly Summit Evaluation Form

Name Corrice Patterson Date 3-15-2017
Email cpatterson@palmetto bay-fl.gov Phone 305-969-5011

Please circle the response you most agree with.

1. The event fulfilled the purpose that was proposed?

Strongly agree

Agree

Somewhat agree

Disagree

Strongly disagree

2. The event met my goals?

Strongly agree

Agree

Somewhat agree

Disagree

Strongly disagree

3. I recommend this event be held again in the future?

Strongly agree

Agree

Somewhat agree

Disagree

Strongly disagree

4. Please provide any additional comments regarding the event below.

Additional vendors

Miami-Dade Bike Friendly Summit Evaluation Form

Name Matt Hughes Date 3/15/17
Email hughesm@cityofaventura.com Phone 305-632-0722

Please circle the response you most agree with.

1. The event fulfilled the purpose that was proposed?

Strongly agree

Agree

Somewhat agree

Disagree

Strongly disagree

2. The event met my goals?

Strongly agree

Agree

Somewhat agree

Disagree

Strongly disagree

3. I recommend this event be held again in the future?

Strongly agree

Agree

Somewhat agree

Disagree

Strongly disagree

4. Please provide any additional comments regarding the event below.

maybe have time for demos

Miami-Dade Bike Friendly Summit Evaluation Form

Name Mani Chael Date March 15, 17
Email michael@chaelcooper.com Phone 305 803 7331

Please circle the response you most agree with.

1. The event fulfilled the purpose that was proposed?

Strongly agree

☒ Agree

Somewhat agree

Disagree

Strongly disagree

2. The event met my goals?

Strongly agree

☒ Agree

Somewhat agree

Disagree

Strongly disagree

3. I recommend this event be held again in the future?

☒ Strongly agree

Agree

Somewhat agree

Disagree

Strongly disagree

4. Please provide any additional comments regarding the event below.

A big eureka was Commissioner
Cava's describing some of her fellow
commissioners did not agree on
setting aside impact fees for bike/transit
improvements. This is unacceptable if we
are seeking Bike Friendly 305.

Miami-Dade Bike Friendly Summit Evaluation Form

Name Alyson Watson Date 3/15/17
Email awatson@med.miami.edu Phone (407) 718-2033

Please circle the response you most agree with.

1. The event fulfilled the purpose that was proposed?

- ☒ Strongly agree
- ☐ Agree
- ☐ Somewhat agree
- ☐ Disagree
- ☐ Strongly disagree

2. The event met my goals?

- ☒ Strongly agree
- ☒ Agree
- ☐ Somewhat agree
- ☐ Disagree
- ☐ Strongly disagree

3. I recommend this event be held again in the future?

- ☒ Strongly agree
- ☐ Agree
- ☐ Somewhat agree
- ☐ Disagree
- ☐ Strongly disagree

4. Please provide any additional comments regarding the event below.

Great event! It might help to schedule a few
5 minute brain breaks to keep the audience
engaged/their brain awake. The presentations were
filled w/ great info but after sitting for a few hours,
the it is hard to stay engaged.

Miami-Dade Bike Friendly Summit Evaluation Form

Name Bryan Pomares Date 3/15/17
Email bpomares@med.miami.edu Phone 305-243-0349

Please circle the response you most agree with.

1. The event fulfilled the purpose that was proposed?

Strongly agree

Agree

Somewhat agree

Disagree

Strongly disagree

2. The event met my goals?

Strongly agree

Agree

Somewhat agree

Disagree

Strongly disagree

3. I recommend this event be held again in the future?

Strongly agree

Agree

Somewhat agree

Disagree

Strongly disagree

4. Please provide any additional comments regarding the event below.

Great event for community organizations and
individuals to meet and get to know what they
are doing.

Miami-Dade Bike Friendly Summit Evaluation Form

Name F. RODRIGUEZ Date 3/15/17
Email fernando-rodriquez@citynmb.com Phone 305.998.2716
Please circle the response you most agree with.

1. The event fulfilled the purpose that was proposed?

Strongly agree

~~Agree~~

Somewhat agree

Disagree

Strongly disagree

2. The event met my goals?

Strongly agree

~~Agree~~

Somewhat agree

Disagree

Strongly disagree

3. I recommend this event be held again in the future?

Strongly agree

~~Agree~~

Somewhat agree

Disagree

Strongly disagree

4. Please provide any additional comments regarding the event below.

Miami-Dade Bike Friendly Summit Evaluation Form

Name FRANK RUIZ Date 03-15-17
Email FRANK.RUIZ@CITYNMB.COM Phone 954 914-8415

Please circle the response you most agree with.

1. The event fulfilled the purpose that was proposed?

Strongly agree

Agree

Somewhat agree

Disagree

Strongly disagree

2. The event met my goals?

Strongly agree

Agree

Somewhat agree

Disagree

Strongly disagree

3. I recommend this event be held again in the future?

Strongly agree

Agree

Somewhat agree

Disagree

Strongly disagree

4. Please provide any additional comments regarding the event below.

THANK YOU FOR THE OPPORTUNITY TO BE PRESENT,
IT WAS VERY INFORMATIVE.

APPENDIX B – MIAMI-DADE BIKE FRIENDLY COLLATERAL



Save the Date

Fonts

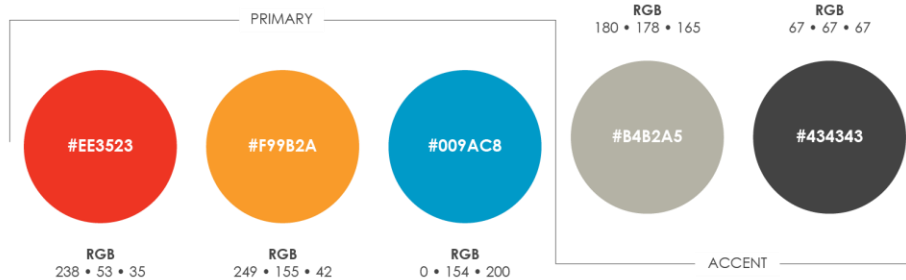
Josefin Sans

Aa Bb Cc Dd Ee Ff
Gg Hh Ii Jj Kk Ll Mm
Nn Oo Pp Qq Rr Ss Tt
Uu Vv Ww Xx Yy Zz

Roboto Condensed

Aa Bb Cc Dd Ee Ff
Gg Hh Ii Jj Kk Ll Mm
Nn Oo Pp Qq Rr Ss Tt
Uu Vv Ww Xx Yy Zz

Colors



THE LEAGUE OF AMERICAN BICYCLISTS
since 1900

MPO
MIAMI-DADE METROPOLITAN
PLANNING ORGANIZATION

LOCATION
VIZCAYA
100 Years

SAVE THE DATE
wednesday **MARCH 15, 2017**

MIAMI-DADE
BIKE-FRIENDLY SUMMIT

Learn and share valuable information
needed to apply for Bicycle Friendly
Community, Business or University designation.

RSVP: ekatz@
marlinengineering.com

For more information:
<http://www.miamidademopo.org/bicycle-pedestrian-program.asp>

Flyer



Program | Front & Back



Program | Inside

ENGINEERING

- ▶ Is your community/business/university easily accessible by bike? ☐
- ▶ Is bike parking secure and readily available? ☐
- ▶ Is your bicycling network comprehensive, connected and well maintained? ☐

The Underline Rendering

EDUCATION

- ▶ Does your community/business/university offer bicycle education classes? ☐
- ▶ Are bicycling education materials available on a regular basis? ☐

UM BikeSafe Education

ENCOURAGEMENT

- ▶ Does your community/business/university provide incentives for bikers? ☐
- ▶ Do you collaborate with a bicycle advocacy group? ☐
- ▶ Is there an up-to-date bicycle map available to your constituents? ☐

Ludlam Trail: Fall Fest

ENFORCEMENT

- ▶ Do law enforcement officers receive training on the rights and responsibilities of all road users? ☐
- ▶ Are bicyclists treated equitably? ☐
- ▶ Is there a program to prevent bike theft? ☐

EVALUATION & PLANNING

- ▶ Does your community/business/university have a bicycle program champion? ☐
- ▶ Is there a current comprehensive bicycle plan available? ☐

TPO Board

AGENDA

Time Event

9:30 AM -
10:00 AM**Registration & Coffee**
Coffee sponsored by Starbucks10:00 AM -
10:30 AM**Welcome**
David Henderson, Intermodal Manager, Miami-Dade TPO
Wendy Wolf, Deputy Director for Learning and Community Engagement, Vizcaya Museum & Gardens10:30 AM -
11:00 AM**Panel 1: Bike Friendly Best Practices**
Bicycle Friendly Community:
Collin Worth, Bicycle/Pedestrian Coordinator, City of Miami
Bicycle Friendly Business:
Mary Jane Mark, Owner, Mack Cycle & Fitness
Bicycle Friendly University:
Luvia Resendiz, Manager, Parking & Transportation, University of Miami11:00 AM -
11:05 AM**Resource Opportunity**
Christopher Pavon, Saris Brand Advocate, Bike Parking11:05 AM -
11:30 PM**Panel 2: Breaking down the 5 E's**
Engineering:
Patrice Gillespie Smith, Manager, Neat Streets Miami
Carlos Cruz-Casas, Assistant Director, Miami-Dade DTPW
Education:
Amy Crowley, Board Member, Everglades Bike Club
Jonathan Hooshmand, Program Manager, University of Miami BikeSafe Program
Cindy Magnole, Injury Prevention Coordinator, Jackson Health11:30 AM -
11:35 AM**Resource Opportunity**
Robert Ruano, Board Member, Green Mobility Network, Quick Build Program11:35 AM -
12:00 PM**Panel 3: Breaking down the 5 E's (Continued)**
Encouragement:
Sue Kowalerski, Manager, Bike 305
Jennifer Garcia, Chair, Bike/Walk Coral Gables
Enforcement:
Chief Charles Press, Police Chief, Village of Key Biscayne
Evaluation & Planning:
David Henderson, Intermodal Manager, Miami-Dade TPO12:00 PM -
12:05 PM**Resource Opportunity**
Stuart Kennedy, Program Director, Public Space Challenge12:05 PM -
12:15 PM**Call to Action**
The Honorable Daniella Levine Cava, Miami-Dade District 812:15 PM -
1:15 PM**Lunch & Courtyard Activities**
Lunch sponsored by Mack Cycle & Fitness1:15 PM -
2:00 PM**Bicycle-Friendly Application Workshop**
Guests fill out applications, staff assists with any questions



Bicycle Friendly Business Flyer (Front)

People

Places

Policy

THE LEAGUE OF AMERICAN BICYCLISTS is the nation's oldest bicycle advocacy organization, leading the movement to create a Bicycle Friendly America for everyone. We believe that, when more people ride bikes, life is better for everyone. Our three areas of focus, PEOPLE, PLACES AND POLICY, all support this belief. The League is bringing together the most passionate, action-oriented people to lead the movement.

www.bikeleague.org

THE BICYCLE FRIENDLY AMERICA™ PROGRAM is all about Places. Our BFA™ program provides recognition and guidance for states, communities, universities and businesses to showcase and enhance their bicycle-friendliness. The program provides a practical blueprint, hands-on assistance, and resources to help make Places better for bicycling.

THE BICYCLE FRIENDLY BUSINESS™ PROGRAM is based on our belief that bikes are good for businesses, employees, and the community. BFBs™ are recognized for their efforts through an award system based on four essential elements to being bicycle friendly: Engineering, Education, Encouragement, and Evaluation & Planning.

BFBs BY THE NUMBERS (SPRING 2016)

As of Spring 2016, nearly 1,200 businesses have gained recognition at the Bronze, Silver, Gold and Platinum levels

BENEFITS OF BECOMING A BICYCLE FRIENDLY BUSINESS

Becoming a BFB benefits your bottom line while also enhancing quality of life in your community. What can you gain by becoming bicycle friendly?

- » Recruitment: attract and retain the best and brightest
- » Increase morale and quality of life for employees
- » Foster a sense of community and camaraderie in workplace
- » Enhance health and wellness benefits, and reduce costs on healthcare
- » Catalyze a more alert, active, productive workforce
- » Reduce absenteeism
- » Showcase social responsibility, a commitment to sustainability and reducing environmental footprint
- » Support and expand reliable, consistent transportation, particularly for employees in urban areas
- » Create a culture of wellness
- » Cut transportation spending by company, individual and community
- » Support long-term health benefits, both physical and mental

Bicycle Friendly Business Flyer (Back)





THE LEAGUE OF AMERICAN BICYCLISTS

MIAMI DADE MPO

BICYCLE FRIENDLY BUSINESSSM PROGRAM

WHY WE SHOULD APPLY?

With more than 500,000 businesses and over a million full-time employees in Miami-Dade County, being designated as a Bicycle Friendly Business (BFB) is a great way to gain national recognition as a leader in wellness, sustainability and corporate responsibility. Bicycle riding has grown tremendously in South Florida in the last few years and what quickly developed into a phenomenon, became a natural and common form of transportation for amateurs, professionals, and all those in between. The Miami-Dade Metropolitan Planning Organization (MPO) now calls upon the business community to sign up for the BFB program!

As part of the BFB application process, your business will receive quality, customized feedback from League staff-the trusted source for best practices on what it means to be bicycle friendly. A Bicycle Friendly Business designation will place your establishment into an elite network that shares peer-to-peer communication and best practices.

Employees and customers want to invest in businesses that care about the environment, care about health and wellness, and care about the community. Earning a designation as a BFB is a clear way to show the community your business cares.



MACK CYCLE & FITNESS

TESTIMONIALS

The BFB program works for businesses of all sizes, from multinational corporate headquarters to local shops and firms.

"Being a Bicycle Friendly Business fits us like a glove. We already had half of our full time staff regularly cycling to work; now we're able to enjoy additional bike parking right in front of the Cinema!"
Coral Gables Art Cinema, Coral Gables, FL

"At Mack Cycle we are happiest when we are on two wheels. We believe in the power of a bicycle to change the world and that starts with our own wellbeing."
Mack Cycle and Fitness, Miami, FL

"We take pride in being a bicycle-friendly business. The Coral Gables Museum is a social gathering place, and a cultural beacon. By promoting cycling, we are setting a positive trend and enhancing the quality of life in our local community."
Coral Gables Museum, Coral Gables, FL

JOIN US!

Visit our website for more information: <http://miamidademipo.org/bicyclefriendlybusiness>

Apply online at: <http://apply.bikeleague.org>

Contact: Richard Denis | 305-573-0089 | richard@iscprgroup.com

Follow us:   @miamidademipo

#BikeFriendly305 #BikeFriendlyMiamiDade

*Bicycle Friendly Business (SM) is a service mark of the League of American Bicyclists and is used with permission.



MIAMI-DADE METROPOLITAN PLANNING ORGANIZATION

APPENDIX C – SUMMIT ATTENDANCE





Miami-Dade Bike-Friendly Summit Sign-In Sheet

Meeting Location
Vizcaya Garage
3250 South Miami Avenue, Miami, FL 33129

Meeting Date & Time
Wednesday, March 15, 2017
10:00 a.m. - 2:00 p.m.

Elected Officials - Sign-In

NAME	REPRESENTING (Name of business or group)	ADDRESS	EMAIL ADDRESS	TELEPHONE NUMBER
Claudia Mariaca	Councilwoman City of Doral		Claudia.Mariaca@CityofDoral.com	
Alice Burch	Mayor Miami Shores		aliceburch@msvfl.gov	
Frank Caplan	Vice Mayor - Key Biscayne		fcaplan@keybiscayne.fl.gov	305 714 4350
Sean McCracken	Commissioner Louisiana		mccras@miamidade.gov	305-375-5218
Danella Cava	MD- County Commissioner			

If you have any questions or comments, please contact Public Information Specialist **Richard Denis** by telephone at 305.573.0089 or by email at Richard@iscprgroup.com.



Miami-Dade Bike-Friendly Summit Sign-In Sheet

Meeting Location
Vizcaya Garage
3250 South Miami Avenue, Miami, FL 33129

Meeting Date & Time
Wednesday, March 15, 2017
10:00 a.m. - 2:00 p.m.

Agency - Sign-In

NAME	REPRESENTING (Name of business or group)	ADDRESS	EMAIL ADDRESS	TELEPHONE NUMBER
Shast Kennedy	The Miami Foundation	40 NW 35th St Suite 305	skennedy@miamifoundation.org	305 371 2711
Ramon Soria	MARLIN			
JEFF WEIDING	MARLIN	1700 NW 66 TH AVE PLANTATION	jweidner@marlincycling.com	954-205-2471
Danielle Carr	Board of County Comm.			
JAMES SANKS	MARLIN		JSPINKS@MARLINCYCLING.COM	305.477.7575

If you have any questions or comments, please contact Public Information Specialist **Richard Denis** by telephone at 305.573.0089 or by email at Richard@iscprgroup.com.



Miami-Dade Bike-Friendly Summit Sign-In Sheet

Meeting Location

Vizcaya Garage
3250 South Miami Avenue, Miami, FL 33129

Meeting Date & Time

Wednesday, March 15, 2017
10:00 a.m. - 2:00 p.m.

Agency - Sign-In

NAME	REPRESENTING (Name of business or group)	ADDRESS	EMAIL ADDRESS	TELEPHONE NUMBER
Miguel	CitiBike Miami		miguel@supermarketcreative.com	305 420 6110
John Swain	Bike Walk Curd Gals		jsswain@aol.com	305 484-2147

If you have any questions or comments, please contact Public Information Specialist Richard Denis by telephone at 305.573.0089 or by email at Richard@iscprgroup.com.



Miami-Dade Bike-Friendly Summit Sign-In Sheet

Meeting Location
Vizcaya Garage
3250 South Miami Avenue, Miami, FL 33129

Meeting Date & Time
Wednesday, March 15, 2017
10:00 a.m. - 2:00 p.m.

Elected Officials - Sign-In

NAME	REPRESENTING (Name of business or group)	ADDRESS	EMAIL ADDRESS	TELEPHONE NUMBER
Claudia Mariaca	Councilwoman City of Doral		Claudia.Mariaca@CityofDoral.com	
Alice Burch	Mayor Miami Shores		aliceburch@msvfi.gov	
Frank Caplan	Vice Mayor - Key Biscayne		fcaplan@keybiscayne.fl.gov	305 714 4350
Sean McCracken	Commissioner Louisiana		mccras@miamidade.gov	305-375-5218
Danella Cava	MD- County Commissioner			

If you have any questions or comments, please contact Public Information Specialist **Richard Denis** by telephone at 305.573.0089 or by email at Richard@iscprgroup.com.



Miami-Dade Bike-Friendly Summit Sign-In Sheet

Meeting Location
Vizcaya Garage
3250 South Miami Avenue, Miami, FL 33129

Meeting Date & Time
Wednesday, March 15, 2017
10:00 a.m. - 2:00 p.m.

Agency - Sign-In

NAME	REPRESENTING (Name of business or group)	ADDRESS	EMAIL ADDRESS	TELEPHONE NUMBER
Shast Kennedy	The Miami Foundation	40 NW 35th St Suite 305	skennedy@miamifoundation.org	305 371 2711
Ramon Soria	MARLIN			
JEFF WEIDING	MARLIN	1700 NW 66 TH AVE PLANTATION	jweidner@marlincycling.com	954-205-2471
Danielle Carr	Board of County Comm.			
JAMES SANKS	MARLIN		JSPINKS@MARLINCYCLING.COM	305.477.7575

If you have any questions or comments, please contact Public Information Specialist **Richard Denis** by telephone at 305.573.0089 or by email at Richard@iscprgroup.com.



Miami-Dade Bike-Friendly Summit Sign-In Sheet

Meeting Location
Vizcaya Garage
3250 South Miami Avenue, Miami, FL 33129

Meeting Date & Time
Wednesday, March 15, 2017
10:00 a.m. - 2:00 p.m.

Agency - Sign-In

NAME	REPRESENTING (Name of business or group)	ADDRESS	EMAIL ADDRESS	TELEPHONE NUMBER
Miguel	CitiBike Miami		miguel@supermarketcreative.com	305 420 6110
John Swain	Bike Walk Curd Gals		jsswain@aol.com	305 484-2147

If you have any questions or comments, please contact Public Information Specialist Richard Denis by telephone at 305.573.0089 or by email at Richard@iscprgroup.com.

Meeting Location
Vizcaya Garage
3250 South Miami Avenue, Miami, FL 33129

Meeting Date & Time
Wednesday, March 15, 2017
10:00 a.m. - 2:00 p.m.

Agency - Sign-In

NAME	REPRESENTING (Name of business or group)	ADDRESS	EMAIL ADDRESS	TELEPHONE NUMBER
Claudia Rodriguez	City of Miami Beach	6821 Towne Esplanade Miami Beach 33141	claudia.rodriguez@miamibeach.fl.gov	786 385 1612
TOM TRUIZ	CITY OF MIAMI GARDENS	18605 NW 27 Ave MIAMI GARDENS, FL	trui2@miamigardens-fl.gov	786-279-1260
Mary Taylor	Mayor Town of Medley	7777 NW 72 Ave Medley, FL 33186	mtaylor@townofmedley.com	

If you have any questions or comments, please contact Public Information Specialist Richard Denis by telephone at 305.573.0089 or by email at Richard@iscprgroup.com.

Meeting Location
Vizcaya Garage
3250 South Miami Avenue, Miami, FL 33129

Meeting Date & Time
Wednesday, March 15, 2017
10:00 a.m. - 2:00 p.m.

Agency - Sign-In

NAME	REPRESENTING (Name of business or group)	ADDRESS	EMAIL ADDRESS	TELEPHONE NUMBER
Conrice Patterson	Village of Palmetto Bay	9705 E. Hibiscus St.	cpatterson@palmettobay-fl.gov	305-969-5011
FERNANDO RODRIGUEZ	CITY NMB	17050 NE 19 AV NMB 33160	fernando.rodriguez@citynmb.com	305.942.7916
KENNETH GARCIA	BIKEWALK CORAL GABLES	20 ALHAMBRA CR CORAL GABLES 33134	kenneth.garcia@gmail.com	786 228 6562
Yanek Fernandez	DT PW	111 NW 1 ST	yanek@miamidade.gov	305 375 1847
Nancy Pierre-Louis	SFCS	5150 NW 33rd Av. #109 Ft. Lauderdale, FL	Louisad@pbworld.com	(3) 606-6478
Alexandra Camejo	Ludlam Trail	2855 Ludlam Road	Alexandra.Camejo@FECI.com	(7) 239-0114
PAUL DIMUONT	CITY OF MIAMI BEACH	1701 HERITIAN AVE MIAMI BEACH, FL	PAULDIMUONT@MIAMI BEACH.FL.GOV	(3) 673-7000 EXT 2347

If you have any questions or comments, please contact Public Information Specialist Richard Denis by telephone at 305.573.0089 or by email at Richard@iscprgroup.com.



Miami-Dade Bike-Friendly Summit Sign-In Sheet

Meeting Location

Vizcaya Garage
3250 South Miami Avenue, Miami, FL 33129

Meeting Date & Time

Wednesday, March 15, 2017
10:00 a.m. - 2:00 p.m.

Agency - Sign-In

NAME	REPRESENTING (Name of business or group)	ADDRESS	EMAIL ADDRESS	TELEPHONE NUMBER
PARICIA MASSEY	EBC	8225 SW 62 AVE SOUTH MIAMI 33143	PMASSEY@SOUTHMIAMI305.COM	954-646-3341
Ayamee@us12mets-group.a	Plum 2	—	Ayamee@us12mets-group.a	305 799 0750
Margaret Sotham	WKBT/HWK	33196 9555 SW 163 Ave	Margaretso@baptisthealth.net	305.962.5606
Paulette Murphy	City of North Miami Beach	17011 NE 19th Ave	paulette.murphy@citynmb.com	305 948-2957
Kerth Darby	MDC Parks Dept	275 NW 2nd Miami, FL 33128	KD652@miamidade.gov	305-961-2788
Luvia Resendiz	University of Miami	5807 Ponce de Leon Bvd. Coral Gables	mrx1598@miami.edu	305-284-1547
Jon Hooshmand	University of Miami	1095 NW 14th Ter	JHOOSHMAND@med.miami.edu	305 243 0349

If you have any questions or comments, please contact Public Information Specialist Richard Denis by telephone at 305.573.0089 or by email at Richard@iscprgroup.com.



Miami-Dade Bike-Friendly Summit Sign-In Sheet

Meeting Location
Vizcaya Garage
3250 South Miami Avenue, Miami, FL 33129

Meeting Date & Time
Wednesday, March 15, 2017
10:00 a.m. - 2:00 p.m.

Agency - Sign-In

NAME	REPRESENTING (Name of business or group)	ADDRESS	EMAIL ADDRESS	TELEPHONE NUMBER
Collin North	City of Miami	444 SW 2 nd Ave	CWORTH@miamigov.com	305-216-1022
Rachel Losada	Mack Cycle	5995 Sunset Drive	Rachel@mackcycleandfitness.com	31/301-6355
Naomi Legogneau	City of N.M.B	17051 NE 19 AVE	naomi.legogneau@citynmb.com	31/948-2272
Rosgit Ruano	GREEN MOBILITY		RJRuano@ECOSTRATAS.com	305/962-8142
Sandra H. Ruiz	City of Ma			
Nelly Navarro	South Fla Commuter Svcs.		navarrod@pbworld.com	305-401-9151
FRANK RUIZ	CITY OF NMB	17050 NE 19th Ave	FRANK.RUIZ@CITYNMB.COM	954-914-8415

If you have any questions or comments, please contact Public Information Specialist **Richard Denis** by telephone at 305.573.0089 or by email at Richard@iscprgroup.com.



Miami-Dade Bike-Friendly Summit Sign-In Sheet

Meeting Location
Vizcaya Garage
3250 South Miami Avenue, Miami, FL 33129

Meeting Date & Time
Wednesday, March 15, 2017
10:00 a.m. - 2:00 p.m.

Agency - Sign-In

NAME	REPRESENTING (Name of business or group)	ADDRESS	EMAIL ADDRESS	TELEPHONE NUMBER
Vince Scullo	Tri-Rail	800 NW 33rd Street, Pompano	Sciullo v@sfra.fl.gov	954-788-7939
Joan Shen	City of Doral	8401 NW 13 Terrace, Doral	joan.shen@cityofdoral.com	305-593-6686
Carlos Acosta	Town of Miami Lakes	6601 Main Street, Miami Lakes, FL 33014	acostac@miamilakes-fl.gov	305-364-6100
Todd Hofferbert	Village of Key Biscayne	58 West McIntyre	T.Hofferbert@KeyBiscayne.fl.gov	305.365.8947
Bryan Pomares	UM Bike Safe	UM Batchelor Building	bpomares@med.miami.edu	305-243-6349
Jen Garcia	Bike Walk CG	20 ALHAMBRA CR	jgarcia@doverkohl.com	206-228-6560
Renee Jean	Town of Miami Lakes	6601 Main Street, Miami Lakes, FL 33014	jeanr@miamilakes-fl.org	305-364-6100

If you have any questions or comments, please contact Public Information Specialist Richard Denis by telephone at 305.573.0089 or by email at Richard@iscprgroup.com.



Miami-Dade Bike-Friendly Summit Sign-In Sheet

Meeting Location

Vizcaya Garage
3250 South Miami Avenue, Miami, FL 33129

Meeting Date & Time

Wednesday, March 15, 2017
10:00 a.m. - 2:00 p.m.

Agency - Sign-In

NAME	REPRESENTING (Name of business or group)	ADDRESS	EMAIL ADDRESS	TELEPHONE NUMBER
Jessica Kai	CITY OF CORAL GABLES		jkellogg@coralgables.com	
FRANK ROUSSEAU	North Bay Village		FROUSSEAU@NBVILLAGE.COM	305-299-7300
Gizel Martinez	South Miami		gmartinez@southmiami.fl.gov	305-55-7888
Victoria Galan	Parks (Miami Dade)		victoria.galan@miamidade.gov	
Lisette Hernandez	Fm Park		Lisheers@fm.edu	
Lisette Pedraza	Fm Park		LPedraza@fm.edu	
Quentin Pough	South Miami		epough@southmiami.fl.gov	

If you have any questions or comments, please contact Public Information Specialist Richard Denis by telephone at 305.573.0089 or by email at Richard@iscprgroup.com.

Meeting Location

Vizcaya Garage
3250 South Miami Avenue, Miami, FL 33129

Meeting Date & Time

Wednesday, March 15, 2017
10:00 a.m. - 2:00 p.m.

Agency - Sign-In

NAME	REPRESENTING (Name of business or group)	ADDRESS	EMAIL ADDRESS	TELEPHONE NUMBER
Genevieve Bajwa	SFRTA/Tri Rail	Pompano Beach	bajwa@sfcta.fl.gov	954-788-7929
Janette marzouka	Town of Cutter Bay	15720 Caribbean Blvd	jmarzouka@cutterbay-fl.gov	305-238-4146
Andrina Nobili	Village of Pinecrest	5855 SW 111 St	anobili@pinecrest-fl.gov	305-284-0900
Loren Matthews	Village of Pinecrest	5855 SW 111 St	lmatthews@pinecrest-fl.gov	305-284-0900
Chris Rupp	Dad's Heritage Trust	19056 12 Ter. M	chrisdadsheritaxtrust.org	305-358-9572
CHARLES KES	KEY BISCAYNE PD	88 W McINTYRE	CPRESS@KBPD.NET	3/519-0801
Alyson Watson	UM Bike Safe	Batchelor Bldg UM	awatson@med.miami-edu	(407) 718-2033

If you have any questions or comments, please contact Public Information Specialist Richard Denis by telephone at 305.573.0089 or by email at Richard@iscprgroup.com.

Meeting Location
Vizcaya Garage
3250 South Miami Avenue, Miami, FL 33129

Meeting Date & Time
Wednesday, March 15, 2017
10:00 a.m. - 2:00 p.m.

Agency - Sign-In

NAME	REPRESENTING (Name of business or group)	ADDRESS	EMAIL ADDRESS	TELEPHONE NUMBER
Mark Hugh	City of Aventura	3301 NE 213 St. Aventura, FL 33120	hughesm@cityofventura.com	305-632-0722
Gustavo Gadea	City of Doral	8401 NW 54th Ave Doral FL	Gustavo.Gadea@cityoforal.com	786-280-2989
Stephanie Cornejo	Miami-Dade County PROS	215 NW 2nd Avenue, #416, Miami, FL 33128	cornejo@miamidade.gov	305.755.7957
Carolyn Parker	Coral Gables Museum	285 Aragon Ave Coral Gables FL	caroline@coralgablesmuseum.org	(305) 603-8067
Stacie Weiss	Town of Surfside	9293 Collins Ave. Surfside FL 33154	sburnett@townofsurfsidefl.gov	(305) 866-3635
Naomi Ross	Center for Social Change/Jane's Walk	2103 Coral Way, 2nd Fl, Miami 33145	Naomi@4socialchange.org	954-695-0085
Lynne Wen	Miami Beach	1600 Meridian	Lynne.Wen@miamibeachfl.gov	305-673-7000 x6429

If you have any questions or comments, please contact Public Information Specialist Richard Denis by telephone at 305.573.0089 or by email at Richard@iscprgroup.com.

Meeting Location

Vizcaya Garage
3250 South Miami Avenue, Miami, FL 33129

Meeting Date & Time

Wednesday, March 15, 2017
10:00 a.m. - 2:00 p.m.

Agency - Sign-In

NAME	REPRESENTING (Name of business or group)	ADDRESS	EMAIL ADDRESS	TELEPHONE NUMBER
Michelle Gonzalez	Town of Miami Lakes	1610 Main St	gonzalezm@miamilakes-fl.gov	(305) 264-6100
Chris Paxon	Savis	422 SW 183 Terr	CHRISPAVON@GMAIL.COM	786-382-6327
Aurelio Comenato	City of Miami	4795 SW 75th St	acarminato@cityofmiami.fl.gov	786 765 5944
Meg Daly	Friends of Underline	1004 Gorton Ave	meg.daly@theunderline.org	305-437-1199
Patrice Gillipie Smith				
Bakari Smith	City of Doral	8401 NW 55th Terr	Bakari.Smith@cityofDoral.com	305-697-5777
Eli Olken-Dann	Barry University	11300 NE 2nd Ave	eolkendann@barry.edu	305 899 4064

If you have any questions or comments, please contact Public Information Specialist Richard Denis by telephone at 305.573.0089 or by email at Richard@iscprgroup.com.



Miami-Dade Bike-Friendly Summit Sign-In Sheet

Meeting Location
Vizcaya Garage
3250 South Miami Avenue, Miami, FL 33129

Meeting Date & Time
Wednesday, March 15, 2017
10:00 a.m. - 2:00 p.m.

Agency - Sign-In

NAME	REPRESENTING (Name of business or group)	ADDRESS	EMAIL ADDRESS	TELEPHONE NUMBER
FIRAT AKCAY	Miami Beach (city)	1700 Convention Center, Miami Beach, FL	Firatakcay@miamibeachfl.gov	860-305-9580
Richard Lorber	City of N.M.B	1700 NE 19th Ave NMB	richard.lorber@citynmb.com	
Luis Collazo	Town of Miami Lakes		LCollazo@owl.com	(305) 733 5111
Michael	Bike South Green Mobility		michaelc@adacorp.com	(305) 803 7331
FERNANDA FAIZ-JUNKIN	ECOLECTRIC COMPANY	12450 SW 117th MIAMI, FL 33196	FERNANDA@ECOLECTRIC.us	3/310-3312
Tyler Peter	FDOT	1000 NW 111 Ave Miami 33122	Tyler.Peter@dot.state.fl.us	305-470-5393
Roxanne Barry		11300 NE 2nd	RBarry@barry.edu	305-899-4583

If you have any questions or comments, please contact Public Information Specialist Richard Denis by telephone at 305.573.0039 or by email at Richard@iscprgroup.com.

Davis University



Miami-Dade Bike-Friendly Summit Sign-In Sheet

Meeting Location
Vizcaya Garage
3250 South Miami Avenue, Miami, FL 33129

Meeting Date & Time
Wednesday, March 15, 2017
10:00 a.m. - 2:00 p.m.

Staff - Sign-In

NAME	REPRESENTING (Name of business or group)	ADDRESS	EMAIL ADDRESS	TELEPHONE NUMBER
Jeanette Caro	ISC / ISC	7270 NW 12 ST	jeanette@iscprgroup.com	305-573-0089
Monica Diaz	ISC	" "	Monica@iscprgroup.com	305 984 2715
Wilma Vernet	MARLIN inc	1720 NW 66 Ave 33137	WVernet@marlinengineering.com	561 261 5351
Erica Sobelman	Marlin Inc.	1700 NW 66th AVE	ESobelman@marlinengineering.com	605 305. 477. 75.75
Anahi Estralin	Marlin Inc.	" "	ATorres@marlinengineering.com	305. 477. 7575
David Henderson	TPO	11 NW 1st St #920	dhenderson@miamidadetpo.org	305-375-1647
Maria Alzate	ISC	7270 NW 12 ST	maria@iscprgroup.com	

If you have any questions or comments, please contact Public Information Specialist Richard Denis by telephone at 305.573.0089 or by email at Richard@iscprgroup.com.



Miami-Dade Bike-Friendly Summit Sign-In Sheet

Meeting Location

Vizcaya Garage
3250 South Miami Avenue, Miami, FL 33129

Meeting Date & Time

Wednesday, March 15, 2017
10:00 a.m. - 2:00 p.m.

Staff - Sign-In

NAME	REPRESENTING (Name of business or group)	ADDRESS	EMAIL ADDRESS	TELEPHONE NUMBER
CHRISTIAN GONZALEZ	ISC		CHRISTIAN@iscprgroup.com	786 354 8456
JOSE SANTIAGO	MARLIN		J SANTIAGO@marlinengineering.com	954 970 5054
JOE QUINTANA	MARLIN		JQUINTANA@MARLINENGINEERING.COM	305 305 342-2020
RICH DENIS	ISC		richard@iscprgroup.com	786 354 8456

If you have any questions or comments, please contact Public Information Specialist **Richard Denis** by telephone at **305.573.0089** or by email at **Richard@iscprgroup.com**.

APPENDIX D – BICYCLE FRIENDLY OUTREACH



Public Places/Museums/Libraries

PAMM
Vizcaya
Zoo Miami
Miami-Dade Public Library
HistoryMiami
Tropical Audubon Society

Businesses

Books and Books
Architectonica
Royal Caribbean
Restaurants
Ms. Cheesious

Cities/Agencies

Miami Shores
Doral
Neat Streets Miami
Miami-Dade D 11
Miami-Dade Parks
City of Miami
Miami-Dade Bike 305
City of Miami Beach
City of South Miami

Health & Fitness

LA Fitness
Recreation Centers
Baptist Health

Sports Venues

Miami Dolphins
Miami Marlins
Homestead Speedway
American Airlines Arena

Bike Shops

Mack Cycle
No Boundaries
Cycle World
Elite Cycle & Fitness
South Miami Bicycles

Universities

FIU
Barry
University of Miami
Miami-Dade College

Community Organizations

Aventura-Sunny Isles Beach Chamber of Commerce
Bike Coconut Grove
Bike SoMi (South Miami)
Chamber South
Coconut Grove Chamber of Commerce
Coral Gables Chamber of Commerce
Dade Heritage Trust
Emerge Miami
Everglades Bicycle Club
The Miami Foundation
The Underline
Urban Health Partnerships
WHEELS

Greater Kendall Business Association
Greater Miami Chamber of Commerce
Greater Miami Shores Chamber of Commerce
Greater North Miami Beach Chamber of Commerce
Greater North Miami Chamber of Commerce
Green Mobility Network
Knight Foundation
Latin Builders Association
Ludlam Trail
Miami Beach Chamber of Commerce
Miami Bike Scene
Miami BPAC
Plan Z
South Florida Hispanic Chamber of Commerce



APPENDIX E – MIAMI-DADE BFC APPLICATION



Application: 03001 | General

Miami-Dade County

Started at: 4/11/2017 09:26 AM - Finalized at: 8/17/2017 04:31 PM

Page: BFC: Application Intro

Community Name:

Miami-Dade County

Has the community applied to the Bicycle Friendly Community program before?

No

If awarded, the following links will appear on your BFA Award Profile on the League's [Connect Locally Map](#).

Community Website:

http://miamidade.gov/wps/portal/Main/home!/ut/p/c5/04_SB8K8xLLM9MSSzPy8xBz9CP0os3hnQ29jA38vF98wk1ALA08fD1MPLzNfAwN_c_1wkA6gCndHDxNzH6CQUZiBgZGfaXCgQWiwsYGnMUTeAAdwNND388jPTdUyM5Oc3RUVAQAZBGxdA!!/dl3/d3/L2dBISEvZ0FBIS9nQSEh/

Community's Twitter URL:

<https://www.facebook.com/miamidadecounty/>

Community's Facebook URL:

<https://twitter.com/MiamiDadeCounty>

Page: BFC: Contact Information

Applicant First Name

David

Applicant Last Name

Henderson

Job Title

Intermodal Manager

Department

Miami-Dade Transportation Planning Organization

Employer

Miami-Dade Transportation Planning Organziation

Street Address (No PO Box, please)

111 NW 1st St Ste 920,

City

Miami

State

Florida

Zip

33128

Phone #

305-609-2784

Email Address

ekatz@marlinengineering.com

Did you work with any advocacy organizations on this application?

Yes

First Name

Sue

Last Name

Kawalerski

Organization

Bike 305

Title Manager
Email
Do you have another contact to enter?
List the names, email address and affiliation of all other individuals that are working with you on this application. ekatz@marlinengineering.com jfierman@marlinengineering.com
Are there bicycle, active transportation, or transportation equity advocacy groups in your community not already identified? Yes
Name of Primary Contact Mari Chael
Organization Green Mobility Network
Email mchael@chaelcooper.com
I have another organization to enter Yes
Name of Primary Contact Emerge Miami
Organization
Email
I have another organization to enter
List all bicycle, active transportation, and transportation equity advocacy groups in your

community, if any. Provide the name and email of the primary contact for each group.

Bike 305 - Sue Kawalerski
Green Mobility Network - Mari Chael
The Miami Bike Scene - Rydel Deed
Bike/Walk Coral Gables - Jennifer Garcia
Miami Bicycle Action Committee - Collin Worth

Page: BFC: Community Profile

Please note: The application will refer to your type of jurisdiction as '**community**' throughout the application, which should not include any bicycle amenities, services and other resources outside your boundaries.

A1. Name of Community:

Miami-Dade

A2. County/ Borough/Parish:

Miami-Dade County

A3. State:

Florida

A4. Link to map of community boundaries:

<https://www.google.com/maps/place/Miami-Dade+County,+FL/@25.5573601,-81.0562307,9z/data=!3m1!4b1!4m5!3m4!1s0x88d98b054de91839:0x49691e748195638b!8m2!3d25.5516034!4d-80.6326916>

A5. If your community spans multiple jurisdictions or does not align with the name of your community given in Question A1, please specify your census geography(ies) here.

<https://www.census.gov/quickfacts/table/POP815215/12086>

A6. Type of Jurisdiction

County/Borough/Parish

A7. Size of community

1897.72

A8. Total Population:

2712945

A9. Population Density:

1315.5

A10. Which of the following best describe your community? Check all that apply.

Urbanized area , Urban core surrounded by low density suburban areas, Low density suburban, Rural

A11. What is the street network density?

Less than 5.0

(For internal use only.)

Name

Carlos A. Gimenez

Title

Mayor

Street Address

111 NW 1st Street, 29th floor

City

Miami

State

Zip

33128

Phone

3053755071

Email

mayor@miamidade.gov

Page: BFC: Engineering

B1. Does your community currently have any of the following policies in place?

Local Complete Streets policy

B1a. What year was the policy adopted?

2014

B1b. Please provide a link to the policy.

<http://www.miamidade.gov/cob/library/Registry/Resolutions/Board-of-County-Commissioners/2014/R-995-14.pdf>

B1c. Since the adoption of the policy, what percentage of the implemented road projects (where bicycle facilities were considered) have included bicycle facilities?

51-75%

B2. Does your community have bicycle facility selection criteria that increases separation and protection of bicyclists based of levels of motor vehicle speed and volume?

Yes

B2a. Please describe.

Miami-Dade county complete streets guidelines call for wider bike facilities on higher speed roads.

B3. Does your community currently have any of the following policies in place that promote shorter distances between homes and destinations? Check all that apply.

Mixed-use zoning or incentives, Planned Unit Development zoning, Transit Oriented Development ordinance or program, Form-based/design-based codes, Connectivity policy or standards

B4. Does your community currently have any of the following street design policies in place that promote a more comfortable cycling environment? Check all that apply.

Design manual that meets current AASHTO standards, Design manual that meets current NACTO standards

B5. Does your community currently have any of the following additional policies in place? Check all that apply.

Policy to preserve abandoned rail corridors for multi-use trails, Accommodation of bicyclists through construction sites in the public right-of-way, Paid public parking

B6. How do engineers and planners learn how to accommodate bicyclists according to the most current AASHTO or NACTO standards? Check all that apply.

Staff participate in bicycle-specific conferences/trainings/educational tours, Webinars , Internal peer training, Training by outside consultant/advocate, Require project consultants to have bike/ped qualifications

B7. What policies or programs increase the amount of end-of-trip facilities for bicyclists? Check all that apply.

Bike parking ordinance for existing buildings specifying amount and location , Bike parking ordinance for all new developments specifying amount and location , Public uncovered bike racks,

Bike valet parking available at community events , Public or private program that provides grants for bike racks or free bike racks upon request

B8. What, if any, end-of-trip facilities are available to the general public in your community? Check all that apply.

Publicly accessible bicycle repair stations, Publicly accessible air pumps, Bicycle Station or Hub that provides lockers and/or showers for commuters

B9. Do your standards for bicycle parking: Check all that apply.

No standards

B10. What percentage of public and private bike racks conform with APBP guidelines?

Unknown

B11. Is there a program (e.g. publicly funded, public-private partnership, or development regulation) that provides or increases bike parking at any of the following locations? Check all that apply.

Public & private schools (K-12), Hospitals and medical centers, Parks & recreation centers

B12. Does your community have a rail transit or bus system?

Yes

B12a. Are bikes allowed inside transit vehicles, including buses? Check all that apply.

Yes, at all times, Only if the external bike rack is full, Special bike hooks are provided inside

B12b. What percentage of buses are equipped with bike racks?

100%

B12c. What percentage of transit stops are equipped with secure and convenient bike parking?

10% or less

B12d. Has your community made specific bicycle infrastructure investments around major transit stops to improve accessibility?

Yes

Please describe any bicycle infrastructure investments around major transit stops that have improved accessibility.

The West Kendall Bus Terminal received a grant from The Miami Foundation's Public Space Challenge to upgrade the bus hub with sheltered bike parking, a public bike repair station and public art.

All 23 Metrorail Stations and all 13 Metrobus Park and Ride lots are equipped with bicycle racks. some metrorail stations are equipped with bike lockers

B12e. How are residents and visitors encouraged to combine cycling and public transportation? Check all that apply.

Cyclists can practice mounting their bike on a bus bike rack at community events, Brochure describing bike rack use/how to store bikes inside a transit vehicle , Video describing bike rack use/how to store bikes inside a transit vehicle , Information on bike racks/storage provided on transit schedules, Stickers on the outside of buses with bike racks that say bicycles are welcome

B13. Are there any off-street facilities within your community's boundaries that can be legally used by bicyclists?

Yes

Answer all that apply. (in miles)

Paved shared use paths (≥ 10 feet)

15

Paved shared use paths (≥ 8 and < 10 feet)

100.9

Unpaved shared use paths (≥ 10 feet)

93.29

Unpaved shared use paths (≥ 8 and < 10 feet)

0

Singletrack

0

B13b. Which of the following features are provided for bicyclists and pedestrians at off-street path crossings of roads with posted speed limits above 25 mph? Check all that apply.

Bike/pedestrian overpasses/underpasses, Raised path crossings, Refuge islands, Path crossing with high visibility markings/signs/ HAWK signals/ Rapid Flashing Beacons, Curb extensions, Signalized crossings

B13c. What measures have been taken to improve the safety and convenience of bicyclists on off-street paths? Check all that apply.

"Cut-throughs" that improve network connectivity for bicyclists (e.g. connecting dead-ends or cul-

de-sacs), Off-street way-finding signage with easily visible distance and/or riding time information for bicyclists while riding, Parallel but separated paths for bicyclists and pedestrians, Signage or markings to designate right-of-way on shared-use paths, Education/awareness campaign about shared-use path etiquette

Sweeping

As needed

Vegetation maintenance

As needed

Snow and ice clearance

N/A - No snow or ice

Surface repair

Within one month of complaint or longer

B14. What is the centerline mileage of your total road network (including federal, state, county and private roads)?

7267.73

(in centerline miles)

≤25mph

5954

>25mph and ≤35mph

350

>35mph

963

B16. Does your community have on-street bicycle facilities?

Yes

B16a. Are there any on-street bicycle facilities on roads with posted speeds of ≤ 25mph?

Yes

Answer in centerline miles. Write "0" if facility is not present in community.

Bike boulevards

0

Shared lane markings (not counted under Bicycle Boulevards)

11

Wide paved shoulders (ridable surface ≥ 4 feet, and minimum clear path of ≥ 4 feet between rumble strips)

0

Bike lanes (incl. standard, contra-flow, left-side) (ridable surface ≥ 4 feet)

11

Buffered bike lanes

0

Protected bike lanes (one-way or two-way)

0

Raised cycle tracks (one-way or two-way)

0

B16b. Are there any on-street bicycle facilities on roads with posted speeds of >25 mph and ≤ 35 mph?

Yes

Answer in centerline miles. Write "0" if facility is not present in community.

Shared lane markings

11

Wide paved shoulders (ridable surface ≥ 4 feet, and minimum clear path of ≥ 4 feet between rumble strips)

12.5

Bike lanes (incl. standard, contra-flow, left-side) (ridable surface ≥ 4 feet)

11

Buffered bike lanes

2

Protected bike lanes (one-way or two-way)

1

Raised cycle tracks (one-way or two-way)

0

B16c. Are there any on-street bicycle facilities on roads with posted speeds of >35mph?

Yes

Answer in centerline miles. Write "0" if facility is not present in community.

Wide paved shoulders (ridable surface ≥ 4 feet, and minimum clear path of ≥ 4 feet between rumble strips)

78.3

Bike lanes (incl. standard, contra-flow, left-side) (ridable surface ≥ 4 feet)

0

Buffered bike lanes

0

Protected bike lanes (one-way or two-way)

0

Raised cycle tracks (one-way or two-way)

0

Sweeping

Same time as other travel lanes

Snow and ice clearance

N/A - No snow or ice

Pothole maintenance/ surface repair

Within 24 hours of complaint

B17. Within the last five years, has your community ever removed a bicycle facility without an improved replacement?

No

B18. How has your community calmed traffic? Check all that apply.

Used lower design speeds when designing for new roadways, Physically altered the road layout or appearance , Road diets , Speed feedback signs/cameras, Car-free/Car-restricted zones

B19. In what other ways has your community improved riding conditions and amenities for on-street bicyclists? Check all that apply.

Roundabouts that accommodate bicycles , Colored bike lanes outside of conflict zones, Signed bike routes

B20. Are there any signalized intersections in your community?

Yes

B20a. Which of the following accommodations are available at signalized intersections to improve conditions for bicyclists?

Demand activated signals with loop detector (and marking), Timed signals, Colored bike lanes in conflict areas, Refuge islands, Right corner islands ("pork chops")

Exclude any private bike sharing systems that are limited to employees of a certain business or students of a certain university.

B21. Does your community currently have a community-wide bike sharing program that is open to the general public?

Yes

B21a. Please provide a link to your bike sharing program website.

<http://www.citibikemiami.com/>

B21b. What type of system is your bike sharing program?

Automated kiosk-style bike share system

B21c. How many bikes are in the system?

2750

B21d. How many stations are in the system?

275

B21e. What is the average station density? (number of stations per square mile)

.6

B21f. How many trips were made in the last calendar year?

1,371,758

B21g. Are there options for transporting children as passengers?

No

B21h. What specific efforts, if any, have been implemented to make the bike sharing program accessible to low-income populations your community? Check all that apply.

Cash or non-credit card dependent payment system, Community outreach

B21i. Does your bike share program make ridership publicly available online?

Yes

B22. Which of the following bicycling amenities are available within your community boundaries? Check all that apply

BMX track, Mountain bike park, Bicycle-accessible skate park, Snow/Fat tire bike trails, Signed loop route(s) around the community

B23. Which of the following safety amenities are available in your community? Check all that apply

Emergency call boxes/phones along trails, Street lighting on most arterials, Street lighting on most non-arterials

B24. Describe any other policies, amenities, infrastructure improvements or maintenance programs that your community provides or requires that create a comfortable and attractive bicycling environment for bicyclists of all ages and abilities.

Regarding on-road bicycle facilities. The Miami-Dade Transportation Planning Organization is in the process of finalizing its Miami-Dade Protected Bike Lanes Master Plan which evaluated 25 potential protected bike lanes segments around the County and provides recommendations for two fast-track pilot projects.

Miami-Dade has incorporated bike ramps along stairwells at the Government Center MetroRail station, allowing for bicycles to easily be walked up and down stairs.

In addition, the Quick Build program is a Green Mobility Network sponsored program that supports tactical urbanism related projects that improve active transportation in Miami-Dade. At this time various locations in the county are undergoing implementation of short-term protected bike lanes with the goal of making these segments permanent.

Finally, Miami-Dade County is also in the process of improving an array of urban trails within the county that support community health and connectivity to commuter friendly destinations. The following projects serve as some of the most significant trail projects that are undergoing improvements regarding safety, accessibility, park amenities, and aesthetics.

The Underline

The Underline is a planned 10-mile linear park and trail that stretches from Dadeland South Metrorail station to Brickell Station. The current M-Path shared use path that exists on the corridor is set for a vast number of intersection safety improvements and an assortment of park amenities and aesthetic enhancements. The Underline will serve as important connector for multimodal commuters traveling to and from the US-1 corridor. The corridor is home to eight Metrorail stations, and a significant amount of employment centers, high density residential, entertainment, the University of Miami and more. The Underline is also an important segment of the East Coast Greenway.

Plan Z Rickenbacker Park

Plan Z Rickenbacker Park is a community driven project aimed at creating a linear park/protected bike lane stretching from the Key Biscayne Toll booth over the Rickenbacker Causeway to Virginia Key. The Rickenbacker Causeway is a major destination for cyclists, triathletes and other recreational riders. Sadly, the roadway is also considered one of the county's most dangerous roads as numerous cycling collisions have occurred along the segment mostly due to cases of drunk driving and speeding.

The Rickenbacker Park project envisions an aesthetically pleasing bike route that also protects cyclists with some form of physical barrier. Segments of the proposal were part of the evaluation of this plan. This segment could be ideal for a future recreation focused PBL. This segment did not qualify as a pilot for this plan because higher priority was given to commuter-friendly routes.

Miami River Greenway

The Miami River Greenway is a development initiative aimed at beautifying the Miami River's edge from the mouth of Biscayne Bay through downtown Miami and beyond SW 27th Avenue. The Miami River Commission is a public-private entity that administers the initiative and works closely with local government and developers to coordinate construction on a parcel-by-parcel shared path greenway that services non-motorized users. With its central location to downtown Miami, the Greenway will provide safe bicycle connectivity for thousands of potential users who are using the greenway to connect to home, work, transit, employment, entertainment and more.

The Ludlam Trail

The Ludlam Trail is a partially abandoned railroad that is proposed to develop into a linear park and trail. The segment is 6.2 miles long and stretches from Dadeland North Metrorail station to Miami International Airport. The corridor is particularly interesting considering its central county location and its proximity to 5 schools, 4 parks, 2 transit hubs and multiple residential neighborhoods and commercial districts. The Ludlam Trail lies close to the City of South Miami which is scheduled to have a protected bike lane connection on SW 64th Street (see page 30). The Ludlam trail connects to the Underline, South Dade Trail and undeveloped sections of the Snapper Creek Greenway

Snapper Creek Greenway

The Snapper Creek Greenway is an 2.5 mile separated path that extends from West Kendall to eventually the Old Cutler Trail. Like the Black Creek Trail, one of the important features of this trail is its east-west connectivity which is an existing challenge and request from local bicycling groups. The master plan for this greenway involves two main segments, A and B. Segment B connects from Bird Road and SW 117th Avenue to Snapper Creek Drive and SW 107 Avenue. Segment B

however remains incomplete and is currently still in planning stages. Once completed, other trails connecting will include the M-Path, South Dade Trail, Red Road linear park, Old Cutler Trail, and R. Hardy Preserve.

Page: BFC: Education

C1. Do any public or private elementary schools offer regular bicycle education to students?

Yes

C1a. What percentage of your public and private elementary schools offer bicycle education?

100%

C1b. What type of bicycle education is offered?

Bicycle safety presentation with no on-bike component

C1c. Are bicycles provided to students by the school district, police, non-profit or other entity to allow every student the opportunity to participate in on-bike instruction?

No, bicycles are not provided

C2. Do any public or private middle schools offer regular bicycle education to students?

Yes

C2a. What percentage of your public and private middle schools offer bicycle education?

100%

C2b. What type of bicycle education is offered?

Bicycle safety presentation with no on-bike component

C2c. Are bicycles provided to students by the school district, police, non-profit or other entity to allow every student the opportunity to participate in on-bike instruction?

No, bicycles are not provided

C3. Do any public or private high schools offer regular bicycle education to students?

Yes

C3a. What percentage of your public and private high schools offer bicycle education?

100%

C3b. What type of bicycle education is offered?

Optional on-bike education

C3c. Are bicycles provided to students by the school district, police, non-profit or other entity to allow every student the opportunity to participate in on-bike instruction?

No, bicycles are not provided

C4. Outside of schools, how are children and youth taught safe cycling skills? Check all that apply.

Bike clinics or rodeos, ABCs of Family Biking, family bike show-and-tell, or similar program focused on families with toddlers and young children, Youth development road or cross racing teams, Helmet fit seminars, Summer camps

C5. Are bicycle safety or riding skills-related classes or hands-on instruction offered to adults in your community?

Yes

C5a. What type of classes are available for adults? Check all that apply.

Classes that include on-bike instruction, Classroom-based classes , Information sessions/workshops

C5b. What topics are covered in these classes? Check all that apply.

Introduction to bicycling/Learn to ride/Bike handling basics, Safe riding skills/habits, Bicycle maintenance, Sharing the road, trail, or path with vehicles or pedestrians, Bike commuting basics

C5c. Who teaches these classes? Check all that apply.

League Cycling Instructor, Local bike shop employee, Local bicycle advocate, Local law enforcement officer

C5d. On average, how often are these classes offered?

Semi-annually

C5e. Are bicycles provided to adults by the community, police, non-profit or other entity to allow every resident to participate in on-bike instruction?

Yes

C6. Which of the following communications methods are used to share bicycle information with adults in your community? Check all that apply.

Community-wide public education campaign, Community-wide Bicycle Ambassador program, Educational group rides, Videos on community website/TV channel/social media, Bike-specific website or social media accounts for community, Community newsletter (print or digital),

Community maps (print or digital), Handouts or brochures, Permanent signage, displays, or information kiosks, Table or booth at community events

C7. Which of the following information is shared using the methods checked above? Check all that apply.

Introduction to bicycling/Learn to ride/Bike handling basics, Safe riding skills/habits, Bicycle maintenance, Sharing the road, trail, or path with vehicles or pedestrians, Commuting tips and resources, Traffic laws/ rules of the road, Bicycle purchase and fitting guidance, Equipment, gear, and accessories, Theft prevention

C8. Do any of the above educational classes, resources, or programs for adults specifically target any of the following traditionally-underrepresented groups? Check all that apply.

Non-English speakers, Low-income populations

C9. In what ways have motorists in your community been educated on sharing the road safely with bicyclists of all ages and abilities? Check all that apply.

Public service announcements, Community-wide public education campaign, Share the Road educational videos on community website/TV channel/social media, Dedicated Share the Road website or social media sites, Community newsletter/magazine article/blog, Community maps (print or digital), Billboards, Share the Road, Bicycles May Use Full Lane, or other bicycle-related traffic signs, Responsibilities towards bicyclists while sharing the road included in driver's education and testing

C10. Which of the following groups of professional drivers receive training that includes information on sharing the road with bicyclists? Check all that apply.

Local government staff, Transit operators, School bus operators, Emergency vehicle drivers

C11. How many League Cycling Instructors are active (have taught a class in the last year) in your community?

8

C12. Are any of the following educational materials published by the League of American Bicyclists provided to community residents and/or businesses?

Smart Cycling Quick Guide, Smart Cycling Student Manual, Smart Cycling Education videos

C13. Describe any other education efforts in your community that promote safe cycling.

Miami-Dade Bicycle Friendly Summit

On March 15, 2017, The Miami-Dade Transportation Planning Organization hosted the first ever Miami-Dade Bike Friendly Summit. The objective of the Bike-Friendly Summit was to provide attendees with a fun and informative day that provided each attending city, business or university with valuable information needed to build a strong Bicycle-Friendly application. The total audience

exceeded 100 participants representing Miami-Dade cities, businesses, and universities that were considering applying for a bicycle friendly designation.

Everglades Bicycle Club

Everglades Bicycle Club is Miami's oldest Bicycle Club. In addition to group rides, EBC educates the community on proper riding laws and safety. They administer a ride training program and includes 6 League Certified Instructors. The purpose of the EBC training program is to educate new riders and ride leaders about the club policies, bicycle laws, and skills needed to safely lead rides.

Page: BFC: Encouragement

D1. Which of the following community-wide bicycle encouragement programs or policies exist in your community? Check all that apply.

Guaranteed Ride Home program, Locally-designated Bicycle Friendly Business District

D1a. Please provide links for any programs checked above:

1800234ride.com

D2. What other groups actively promote bicycling in the community? Check all that apply.

Chamber of Commerce, Downtown Business Association/Business District, Tourism Board, Other civic associations (e.g. Rotary, Lion's Club, etc.)

D3. Does your community actively promote the League of American Bicyclists' Bicycle Friendly Business (BFB) or Bicycle Friendly University (BFU) programs in your community?

Yes

D4. What up-to-date mapping and route-finding information is available for your community? Check all that apply.

Web-based route finding service, Smart phone app, Printed/digital bicycle network map , Printed/digital mountain bike trails map, Printed/digital greenways and trails map , Printed/digital Safe Routes to Schools map(s)

D5. How is National Bike Month/your own dedicated Bike Month promoted in your community? Check all that apply.

Official Proclamation, Community-wide Bike to Work Day/Week, Bike to School Day/Week , Community Rides, Mayor-led/Council-led Ride, Public Service Announcements, Videos promoting bicycling on community website/TV channel, Publish a guide or calendar of Bike Month Events, Bike Month Website, Commuter Challenge, Kidical Mass Ride, Open Streets/Ciclovía/Sunday Parkways,

Mentoring program for new riders, Bike valet parking at events, Bicycle-themed festival/parade/show, Trail construction or maintenance day

D6. How is bicycling promoted in your community outside of Bike Month? Check all that apply.

Community and charity rides, Mayor-led/Council-led rides, Videos on bicycling on community website/TV channel, Public Service Announcements, Trail construction or maintenance day, Kidical Mass Ride, Open Streets/Ciclovia/Sunday Parkways, Commuter Challenge, Triathlons and bicycle races, Bike commuter events, Publish a guide or calendar of community bicycle events, Mentoring program for new riders, Bike valet parking at events, Bicycle-themed festivals/parades/shows, Public education campaign related to cycling (e.g. with a focus on public health or environmental benefits), Community celebration/ride each time a bicycle project is completed

D7. Are any bicycle events specifically marketed to any of the following traditionally underrepresented groups? Check all that apply.

Women

D8. How does the municipality sponsor or actively support bicycle events in the community? Check all that apply.

Organize event(s), Fund event(s), Contribute in-kind funding (i.e. police presence, closing roads, etc.), Assist in promoting event(s)

D9. Are any of the following cycling clubs/groups active in your community? Check all that apply.

Recreational bike clubs, Mountain bike clubs, Friends of the Trail groups, Racing clubs or teams, Kidical Mass, Family Bike Party, or other family-oriented groups, Bike polo/La Crosse clubs, Slow ride group

D10. Does your community have any of the following youth programs centered on encouraging bicycling for children and youth? Check all that apply.

Safe Routes to School program, Earn a Bike program, Create a Commuter program

D11. What is the ratio of for-profit specialty bicycle retailers (shops dedicated primarily to selling bikes and bike-related equipment) to population within your community's boundaries?

1 shop for more than 50,001 residents

D12. Is there at least one bike co-op or non-profit community bike shop within the community's boundaries?

Yes

D12a. Do(es) the co-op/non-profit community bike shop(s) receive any of the following support from the local government? Check all that apply.

Provision of abandoned or impounded bicycles for resale

D13. Describe any other events, programs or policies your community has to encourage bicycling.

Bike 305

Bike305 is a Miami-Dade County initiative promoting cycling as a way to connect people to communities using the existing miles of safe off-road trails, paths, greenways and on-road bikeways.

Bike 305 collaborates with municipalities and cycling groups, creates community bike rides, teaches children safe-cycling skills via bike rodeos, organize events featuring family rides and activities, and encourages residents to commute to work, school, parks and other destinations by bike and public transportation. Bike305 Month, celebrated every March, features two signature cycling events: Bike305 Bike to Work Day, and Bike305 Bike The Underline. Bike 305 also participates with over 30 municipal and organizational rides and events highlighting safe cycling in our community. Twenty-one municipalities and dozens of cycling organizations & sponsors have partnered with us since 2013 and the goal is to engage all 35 municipalities over the next several years.

WHEELS

WHEELS is a campaign and series of events that encourages Miami-Dade residents to get around without a car. The campaign promotes the various benefits of active transportation such as better health, cleaner environment, and improved community. The home base of WHEELS is South Miami, Florida, where the Miami-Dade Metrorail, The Underline (M-Path), and the proposed Ludlam Trail all meet.

Green Mobility Network 501 (c) (3)

Green Mobility Network is Miami-Dade's oldest bicycle and pedestrian advocacy organization. Their mission is to advocate to make Miami-Dade County a safer and more enjoyable place to bicycle, run, and walk. Their focus is county-wide, and are dedicated to building cooperative relationships among activists, community leaders, elected officials, civic leaders, and philanthropists. GMN began in 2005 as an informal group of grassroots advocates concerned about the dangers of bicycling and walking in Miami-Dade County and committed to making Miami-Dade a safer place for biking, walking, and running. In 2007 Green Mobility Network was established as a nonprofit corporation. We were a key organizer in meetings in February 2008 that led to the adoption of a bicycle master plan by the City of Miami. GMN has continually monitored and advocated for improving the county's network of mixed-used trails and bikeways, particularly the nine-mile-long M-Path, the bike lanes along the Rickenbacker Causeway, the planned Biscayne-Everglades Greenway and, most recently, the proposed Ludlam Trail between Kendall and Miami International Airport. GMN also provides the County with local bike-valet services.

The Miami Bike Scene

The Miami Bike Scene is an online publication and the premier resource for local cycling news, events, group rides, bicycle culture, and more in sunny South Florida. Since 2007, The Miami Bike Scene has been steadily building a strong brand and partnering with local organizations and agencies to organize community rides, increase citizen participation in transportation planning, and promote safer bicycling. The Miami Bike Scene also serves as the unofficial organizer of the monthly Critical Mass ride that is regularly attended by thousands of Miami riders.

E1. How does your police department interact with the local cycling community? Check all that apply.

A police officer is an active member of or regularly attends meetings of the bicycle advisory committee, Police department assists with bicycle events/rides, Police department hosts bicycle events/rides, Officers provide bike safety education, Officers distribute bike safety/theft deterrent information

E2. What percentage of patrol officers are regularly on bikes?

1- 20%

E3. What other public or private bicycle safety programs are in place? Check all that apply.

Helmet giveaways, Light giveaways, Volunteer trail watch programs/patrols

E4. What kind of bicycle-related training is offered to police officers? Check all that apply.

None of the above

E5. Are there any local ordinances or state laws that protect bicyclists in your community? Check all that apply.

It is illegal to park or drive in a bike lane (intersections excepted), Ban on cell phone use while driving , Ban on texting while driving, Vulnerable road user law, Safe passing distance law, Photo enforcement for red lights and/or speed

E6. Do any local ordinances in your community place restrictions on bicyclists? Check all that apply.

Local law requires bicyclists to use bike lanes when provided, Local law requires that bicyclists are required to ride as far to the right of the road as practicable without exceptions , Restrictions on sidewalk riding inside the Central Business District

E7. Which of the following bicycle-related enforcement practices exist in the community? Check all that apply.

Data-driven enforcement of traffic violations most likely to lead to crashes, injuries, and fatalities

E8. How does your community use traffic citation data? Check all that apply.

Data/reports are shared with transportation agencies to improve infrastructure

E9. Is there a specific plan, policy or program to further increase bicycle safety in your community?

Vision Zero policy/Policy to eliminate traffic fatalities within a specific time frame not to exceed 20 years

Link:

Upload:

No File Uploaded

E10. Do police officers report bicyclist crash data?

Yes

E10a. On average over the past five calendar years, how many bicyclists have been in a crash involving a motor vehicle annually?

86.8

E11. On average over the past five calendar years, how many bicyclists have died due to a crash involving a motor vehicle annually?

0.6

E12. Describe any other enforcement or safety programs/policies relating to bicycling.

Page: BFC: Evaluation & Planning

F1. Is there a bike program manager or primary point of contact for bicycling issues at your local government?

There is a full-time, paid bike program manager whose primary role is helping the community become bicycle-friendly and encouraging ridership.

F1a. Provide contact information if different from applicant.

Sue Kawalerski, Bike 305 Manager, Susan.Kawalerski@miamidade.gov

F2. Is there a Safe Routes to School Coordinator?

Promoting Safe Routes to School educational programs and infrastructure improvements is a part of someone's official job description but they have other responsibilities as well.

F2a. Provide contact information if different from applicant.

dhenderson@miamidadempo.org

F3. How many government employees (including the Bicycle Program Manager and the Safe Routes to Schools Coordinator), expressed in full-time equivalents (FTE), work on bicycle issues in your community?

3

F4. Does your local government provide any of the following professional development opportunities for employees who have bicycle-related responsibilities? Check all that apply.

League Cycling Instructor (LCI) certification, Association of Pedestrian and Bicycle Professionals (APBP) membership, Other professional memberships/accreditations related to bicycles , Attend bicycle-related webinars/trainings , Attend bicycle-related conferences , Present at bicycle-related webinars, trainings, or conferences

F5. Does your community have an officially-recognized Bicycle Advisory Committee?

Yes

F5a. How often does the committee meet?

Monthly or more frequently

F5b. Provide contact information for the Bicycle Advisory Committee Chair.

Susan.Kawalerski@miamidade.gov

F6. Does your local government have an internal equity, diversity, and inclusion (EDI) initiative, committee, or position?

Yes

F6a. Provide the name and email address of the primary contact.

Elizabeth Rockwell; erockwell@miamidadempo.org

F6b. Please describe how, if at all, the EDI initiative, committee, or position supports equitable bike planning or outreach in the community.

The Miami-Dade TPO complies with the provisions of Title VI of the Civil Rights Act of 1964, which states: No person in the United States shall, on grounds of race, color, or national origin, be excluded from participation in, be denied the benefits of, or be subjected to discrimination under any program or activity receiving federal financial assistance.

In an effort to achieve this requirement, the Miami-Dade TPO developed a Public Participation Plan and Outreach Planner to ensure that planning efforts for all modes, including bicycling, are inclusive of the entire community.

F7. Does your community have a comprehensive bicycle master plan or similar section in another document?

Yes

F7a. What year was the plan adopted?

2014

F7b. Provide a link to the plan.

<https://www.miamidade.gov/transit/library/reports/transit-system-bicycle-master-plan.pdf>

F7c. Is there a dedicated budget for implementation of the plan?

Yes

F7c1. What is the designated annual budget?

99000000

F7c2. List or describe funding source(s).

Federal, State, and local funds including grants

F7d. Does your plan include goals (including project lists) that are evaluated annually?

Yes

F7d1. How many goals/projects do you evaluate progress on annually?

20

F7d2. How many goals/projects did you meet annual target for in the most recent calendar year?

13

F7d3. How many goals/projects have you improved your performance on without meeting your target in most recent calendar year?

F7e. How have community planning staff reached out to minority, non-English speaking, and/or low-income communities to ensure that they are included in the decision-making process?

The TPO created the Transportation Outreach Planner in order to review the social, economic, and geographic characteristics of an area before public involvement efforts are initiated. In 2010 the program became regional when the Broward and Palm Beach MPOs joined the program.

The Transportation Outreach Planner now includes a new, interactive mapping and reporting tool called the 2010 Census Demographic Reporting Tool. You can locate 2010 census data and 2009

American Community Survey (ACS) data by census block groups, census places, and neighborhoods for Broward, Miami Dade, and Palm Beach counties.

F8. What other local agencies have a bicycle master plan or similar section in another transportation demand management document? Check all that apply.

Transit agency , School district, Hospital or medical center(s), Parks & Recreation, Metropolitan Planning Organization, Regional Planning Commission, County/Borough/Parish

F9. Is community-wide bicycle planning integrated with planning for any of the following: Check all that apply.

Transit stops, Public & private schools (K-12), Higher education institutions, Hospitals and medical centers, Parks & recreation centers

F10. What percentage of the community's total annual transportation budget – on average over the last five fiscal years – was invested in bicycle projects?

15%

F11. Is bicycle-related funding specifically allocated to underrepresented areas of your community? (e.g. low-income neighborhoods, etc.)

Yes

F11a. Please describe.

The evaluation criteria for selecting projects for funding through the Transportation Alternatives Program (TAP) include "Mobility enhancement or community development for disadvantaged groups (i.e. children, the elderly, the poor, those with limited transportation options, and the disabled)." The prioritization criteria for Safe Routes to School (SRTS) funding includes the number of students eligible for the free or reduced lunch program.

F12. How does your community collect information on bicycle usage? Check all that apply.

Automated/electronic bicycle counters, Regular statistically-valid community bicycle surveys, Regular manual counts of bicyclists on trails, Regular manual counts of bicyclists on the road, Regular counts of parked bicycles at transit stations (if applicable), Regular counts of parked bicycles at schools

F12a. Based on your own data collection, what percentage of all utilitarian trips are made by bicycle?

5%

F12b. Based on your own data collection, what percentage of residents use a bicycle recreationally?

5%

F12c. Based on your own data collection, what percentage of all bicycle trips are made by women?

25%

F12d. Based on your own data collection, what percentage of children (K-12) regularly bike to school (outside of Bike to School days)?

2%

F12e. Based on your own data collection, what percentage of children regularly commute to preschool/daycare by bike? (e.g. in a bicycle child seat or bike trailer)

>1%

F13. Does your community establish target goals for bicycle use? (e.g. a certain level of bicycle mode share)

No

F14. Does your community routinely conduct pre/post bicycle mode share evaluations of bicycle-related road projects?

Yes

F15. Which of the following mechanisms are in place for bicyclists to identify problem areas or hazards to traffic engineers, planners, and police? Check all that apply.

Online reporting system (e.g. SeeClickFix), Mobile app , Hotline, Regular meetings, Contact staff directly via call/voicemail/fax/email/text/social media

F16. How has your community conducted a network analysis to evaluate current conditions for bicyclists and identify significant infrastructure barriers to bicycling? Check all that apply.

GIS-based network analysis, Level of Traffic Stress analysis, Bicycle Level of Service for roads, Multi-modal Level of Service

F17. Besides the Bicycle Friendly Community program, what other national programs does your community participate in to improve for bicycling? Check all that apply.

U.S. DOT Mayor's Challenge for Safer People and Safer Streets, National League of Cities/Let's Move! Cities, Towns and Counties

F18. Describe any other efforts by your community to evaluate and/or plan for bicycle ridership and/or networks.

Miami-Dade Transportation Planning Organization

In the mid-1960s Miami-Dade County established a bikeway system for the first time. In 1986 County Commissioners adopted the Bicycle Comprehensive Plan. With the adoption of the plan, the position of the Bicycle Pedestrian Coordinator was also created to be responsible for the

development and implementation of the plan. Years later, pedestrian issues were also included to the plan to focus more attention on all non-motorized transportation concerns.

To reduce the number of pedestrians killed and injured, the Bicycle Pedestrian Program is currently working with the National Highway Traffic Safety Administration to make walking safer in neighborhoods that have the largest numbers of crashes. Crashes involving bicyclists and pedestrians account for 40% of the traffic fatalities in Miami-Dade County each year.

Safety information for bicyclists is also available for bike rodeos and other safety events hosted by hospitals, police and community groups.

The TPO participates in the Community Traffic Safety Team (CTST) Program, an inter-agency team approach to reducing the number of traffic crashes, injuries, and fatalities. The TPO hosts monthly countywide CTST meetings where representatives from traffic engineering, planning, and law enforcement come together to coordinate their traffic safety programs. The School Board CTST is a spin-off of the countywide team and deals only with school traffic issues and coordinates the Safe Routes to School program. Meetings are held at the School Board Administration Building.

National Bike Month

Each May is national "Bike Month" and "Bike to Work Week" in the US. The TPO provides information and material to help people turn their commute into a healthful and money-saving alternative to driving.

Miami-Dade 2040 Bicycle/ Pedestrian Plan

The Miami-Dade 2040 Bicycle/Pedestrian Plan presents a vision and improvement strategies developed through public engagement activities and technical analysis to enhance the important non-motorized transportation network of Miami-Dade County. This Plan serves as the non-motorized element of the 2040 Long Range Transportation Plan.

Miami-Dade Bicycle and Pedestrian Count Program

The Miami-Dade TPO conducts periodic bicycle and pedestrian counting studies at 55 locations throughout the county. Locations include popular commuter and recreation routes. Data helps Miami-Dade County identify trends regarding increases or decreases and analyzes what may have been the contributing factors such as new constructions or an upgrade to bicycle/pedestrian facilities.

Page: BFC: Final Overview

G1. What are the top three reasons your community has made bicycling a priority?

Community connectivity, Provide affordable transportation options , Traffic and bicycle/pedestrian safety

G2. Briefly describe the most positive outcome of your community's support for bicycling.

Bicycling makes Miami-Dade County more fun.

G3. Describe any improvements that have occurred for cycling in your community since your last application.

N/A

G4. What could be done differently in order to make bicycling safer, more enjoyable and/or more convenient in your community?

More coordinated advocacy efforts would help move projects from concept to concrete.

G5. What specific bicycle-related improvements are planned in the next 12 months that directly affect your community?

A new program to support "Quick Build" tactical urbanism projects will be implemented in the next 12 months and create new bike lanes and other non-motorized improvements at 18 locations throughout Miami-Dade County. This is an approach with a great impact on the community because the public will see projects constructed much more quickly than usual, creating excitement for upcoming multi-modal projects.

G6. We often get requests for example BFC applications from aspiring communities. Are you willing to share your application?

Yes

G7. How did you hear about the Bicycle Friendly Community program?

Membership in the League of American Bicyclists and attendance at the National Bike Summit

Page: Supplementary Materials

Optional: If you would like to share any supplemental materials to support your application, please upload your files here.

By submitting photos here, you are granting the League of American Bicyclists the right to use your images to promote bicycling.

File 1

Miami-Dade Mayor leading Bike 305 Bike to Work day

[Download File](#)

File 2

Rails to Trails Miami Loop Regional Trails (existing and planned)

[Download File](#)

File 3

Monthly Critical Mass ride meets at Miami-Dade Government Center

[Download File](#)

File 4

Miami-Dade Bike Friendly Summit

[Download File](#)

File 5

<http://greenmobilitynetwork.org/2015/08/13/the-rise-of-miami-dades-bicycle-district/>

[Download File](#)

RadioList df3bd4b2-91ca-4235-bbdf-635e64d36ceb

Upload additional files

File 6

Miami Heat / Florida Department of Transportation Cycle for Safety Ride

[Download File](#)

File 7

<https://www.youtube.com/watch?v=yjXofjp3PKI>

[Download File](#)

File 8

WHEELS Florida Program

[Download File](#)

File 9

No File Uploaded

File 10

No File Uploaded