

# Unified Planning Work Program (UPWP) Revision Form

MPO Requesting UPWP Revision:

Miami-Dade MPO

UPWP Revision Occurring in:

FY 2014/15 &amp; FY 2015/16

UPWP Revision #

5

Type of UPWP Revision:

Amendment

[See here for explanation of Revisions](#)

Reason for UPWP Revision:

De-obligation of \$125,000 in FY 2015 STP funds (\$93,750 Federal, \$31,250 Local), \$255,000 in FY 2015 PL (\$208,922 Federal, \$46,078 Local) and \$161,000 FY 2016 PL funds (\$131,907 Federal, \$29,093 Local) to be reprogrammed into FYs 2017 and 2018 UPWP first year. Total de-obligation from FYs 2015 and 2016 UPWP equals \$541,000 including local match.

## UPWP Task Information

Fiscal Year 2014/15

Task(s) Information - List Up to 7 if there are more than 7 changes, please use an additional form.

Task(s) Number & Name	Funding Source	Task Amounts	
		Prior to Revision	After Revision
(1) 5.1 General Planning Consultant (Federal)	SU (STP Urban) Funds	\$ 159,113	\$ 65,363
(2) 5.1 General Planning Consultant (Local)	Local Funds	\$ 53,037	\$ 21,787
(3) 5.2 Call for Ideas (Federal)	PL Funds	\$ 401,458	\$ 213,019
(4) 5.2 Call for Ideas (Local)	Local Funds	\$ 88,542	\$ 46,981
(5) 6.1 Regional Support (Federal)	PL Funds	\$ 126,991	\$ 106,509
(6) 6.1 Regional Support (Local)	Local Funds	\$ 28,009	\$ 23,491
(7)		\$	\$
<b>Total <u>PL</u> Balance for Fiscal Year 2014/15</b>		<b>\$ 2,890,371</b>	<b>\$ 2,681,449</b>
<b>Total <u>UPWP</u> Balance for Fiscal Year 2014/15</b>		<b>\$ 6,379,331</b>	<b>\$ 5,999,331</b>

# Unified Planning Work Program (UPWP) Revision Form

**Fiscal Year 2015/16**

**Task(s) Information - List Up to 7** If there are more than 7 changes, please use an additional form.

	Task(s) Number & Name	Funding Source	Task Amounts	
			Prior to Revision	After Revision
(1)	2.4 Highway Traffic Counting (Federal)	PL Funds	\$ 61,447	\$ 0
(2)	2.4 Highway Traffic Counting (Local)	Local Funds	\$ 13,553	\$ 0
(3)	5.2 Call for Ideas (Federal)	PL Funds	\$ 95,039	\$ 24,579
(4)	5.2 Call for Ideas (Local)	Local Funds	\$ 20,961	\$ 5,421
(5)			\$	\$
(6)			\$	\$
(7)			\$	\$
<b>Total <u>PL</u> Balance for Fiscal Year 2015/16</b>			\$ 2,049,743	\$ 1,917,836
<b>Total <u>UPWP</u> Balance for Fiscal Year 2015/16</b>			\$ 4,682,283	\$ 4,521,283

## This Section is Only Applicable to Amendments

**Amendment Due to: (Check all that apply)**

- Change in FHWA Approved PL Budget
- Change in Scope of FHWA Funded Work Task(s)
- Addition or Deletion of Work Task(s)
- Change in FTA Grant Funding (5305(d))

**Amendment Part of De-Obligation:**

**Date UPWP Amendment Approved by MPO Board :**

(mm/dd/yyyy)

(mm/dd/yyyy)

**Date MPO Submitted UPWP Amendment for FDOT Review:**

(mm/dd/yyyy)

**Date FDOT Submitted UPWP Amendment for FHWA/FTA Review:**



# Unified Planning Work Program (UPWP) Revision Form

## Required Attachments to be Included with Form Submission:

- Revised UPWP Summary Budget Table(s) (Original & Proposed)
- Revised UPWP Task Sheet(s) (Original & Proposed)
- MPO Resolution and/or MPO Meeting Minutes Approving UPWP Amendment (Applicable only to Amendments)

Please Use this Field to Indicate Whether Additional Forms were Required for this UPWP Revision Submittal

Form  Of

## Response to Request: **for FDOT, FHWA, and/or FTA use ONLY**

FDOT Action on Request:

Signature Field  Digitally signed by pl630CT  
DN: cn=pl630CT, o=Florida Department of Transportation, ou=Planning,  
email=curlene.thomas@dot.state.fl.us, c=US  
Date: 2016.06.03 10:57:21 -04'00'

Date:  (mm/dd/yyyy)

FDOT Comment: Amount of funds being de-obligated :  
Federal Planning (PL) \$340,829  
Surface Transportation Funds (STP) \$ 93,570

June							2016	
Su	M	Tu	W	Th	F	Sa		
			1	2	3	4		
5	6	7	8	9	10	11		
12	13	14	15	16	17	18		
19	20	21	22	23	24	25		
26	27	28	29	30				

FHWA Action on Request:

**FHWA sign Amendments ONLY**

Signature Field  Digitally signed by STACIE E BLIZZARD  
DN: c=US, o=U.S. Government, ou=DOT FHWA/TallahasseeFL,  
ou=FHWA FHWA/TallahasseeFL, cn=STACIE E BLIZZARD  
Date: 2016.06.04 12:20:02 -04'00'

Date:

FHWA Comment: Total PL funds amendment is for the reduction of \$340,829 (total of both years) that will be de-obligated.

FTA Action on Request:

**FTA sign Amendments for Transit projects ONLY**

Signature Field

Date:  (mm/dd/yyyy)

FTA Comment:

**Proposed UPWP Revision 5 (4th Amendment) - Deobligation of FY 2015 PL and STP Funds and FY 2016 PL Funds**

**TABLE 4**

**FYs 2015 and 2016 UNIFIED PLANNING WORK PROGRAM**

**FUNDING SUMMARY**

NEW FUNDS							
PL FUNDS	FY15 PL Amend	FY15 PL Amend	FY 2015	FY 2016	FY16 Amend	FYs 2015 and 2016	
FHWA PL Funds (81.93%)	\$2,481,449	\$2,690,371	\$3,103,309	\$2,049,743	\$1,917,836	5,153,052	\$4,740,114
Local Match (18.07%)	\$547,295	\$593,373	\$684,448	\$452,079	\$422,986	1,136,527	\$1,045,452
	\$3,028,744	\$3,283,744	\$3,787,757	\$2,501,822	\$2,340,822	<b>6,289,579</b>	\$5,785,566
STP FUNDS	FY15 STP Amend	FY 2015	FY 2015	FY 2016		FYs 2015 and 2016	
FHWA STP Funds (75%)	\$ 65,363	\$ 159,113	\$100,000			100,000	\$ 159,113
Local Match (25%)	\$ 21,787	\$ 53,037	\$33,333			33,333	\$ 53,037
	\$ 87,150	\$ 212,150	\$133,333			<b>133,333</b>	\$ 212,150
FTA SECTION 5305(d) FUNDS		FY 2016	FY 2015	FY 2016		FYs 2015 and 2016	
Section 5305(d) (80%)		\$1,684,369	\$1,641,149	\$1,228,000		\$2,869,149	\$3,325,518
State Match (10%)		\$210,546	\$205,144	\$153,500		\$358,644	\$415,690
Local Match (10%)		\$210,546	\$205,144	\$153,500		\$358,644	\$415,690
		\$2,105,461	\$2,051,437	\$1,535,000		<b>\$3,586,437</b>	\$4,156,898
TRANSFER TO MPO FOR RL RTP			FY 2015	FY 2016		FYs 2015 and 2016	
Broward MPO (100% PL Funds)			\$100,000				\$100,000
Palm Beach MPO (100% PL Funds)			\$100,000				\$100,000
CTD FUNDS			FY 2015	FY 2016		FYs 2015 and 2016	
Comm. Trans. Disad. (TD, 100% State)			\$75,000	\$75,000			\$150,000
FYs 2015 and 2016 New Funds Total			FY 2015	FY 2016	FY16 Amend	FYs 2015 and 2016	
	\$ 5,496,355		\$6,247,527	\$4,111,822		\$10,359,349	
			\$5,822,331	\$4,682,283	\$4,521,283	\$9,855,336	\$10,504,614

PREVIOUS YEARS FUNDING CARRIED OVER			
FY 2014 Section 5303: No.5.1 (80% Federal)		\$390,400	
State Match		\$48,800	
Local Match		\$48,800	
		\$488,000	\$488,000
FY 2014 Section 5303: No. 5.2 (80% Federal)		\$55,200	
State Match		\$6,900	
Local Match		\$6,900	
		\$69,000	\$69,000
		Carryover Total	\$557,000

		<b>FY 2015</b>	<b>FY 2016</b>	
		\$6,804,527	4,111,822	
		\$6,379,331	4,682,283	
	\$ 5,999,331	\$6,379,331	4,521,283	
				<b>\$10,916,349</b>
				\$10,491,153
				<b>\$11,061,614</b>
				\$10,520,614

Effective FY 2015, Section 5303 funds are referenced as Section 5305(d)  
 Horizontal lines reflect the first amendment. (\$504,013 PL reduction)  
 Vertical lines represent the 4th revision (addition of FY 2015 STP \$78,817 and FY 2016 FTA \$570,461 funds)  
 Highlighted cells in yellow indicate results of 4th revision

**ELEMENT 5: SPECIAL PROJECT PLANNING**

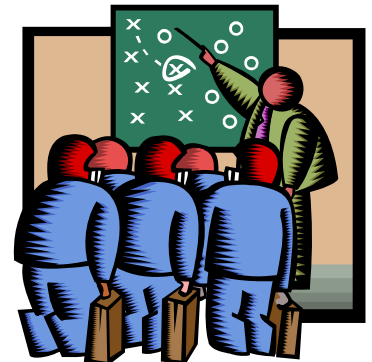
---

**TASK NUMBER AND TITLE:**

5.1 GENERAL PLANNING CONSULTANT SUPPORT

**PURPOSE:**

Provide professional planning services, as needed, to supplement the MPO Secretariat's efforts in conducting the transportation planning process for Miami-Dade County.



**PREVIOUS WORK:**

Under this tasks, the following studies have been already completed:

- 2013 Transit Development Plan (TDP)
- 2035 LRTP: Maintenance of Effort
- 2040 LRTP: Compliance with Federal and State Requirements
- 2040 LRTP: Needs Assessment Study
- Application of CMP Strategies in Miami-Dade
- Application of Innovative Strategies to Improve Bicycle Safety and Mobility in Miami-Dade
- Arterial Grid Network Analysis II
- Bicycle/Pedestrian Safety Plan Update
- Connecting NW 25<sup>th</sup> St to the HEFT
- Development of Truck Parking Facilities Phase II
- Interactive Transportation Planning Tool Project
- NW 27<sup>th</sup> Avenue Enhanced Bus Service (EBS) Concepts and Environmental Plan
- O-D Surveys for Local Bus Route – Phase I (North Garage)
- Safe Routes to School Plans 2011
- Transit Options to the Port of Miami feasibility Study

In addition, the following studies are ongoing and will be completed by June 2014:

- Development of Complete Streets Manual
- Douglas Road Transit Corridor
- Downtown Miami Intermodal Terminal Feasibility Study
- Implementation of Enhanced Bus Service (EBS) along Flagler Street
- Miami-Dade Bicycle/Pedestrian 2040 Master Plan
- Miami-Dade Compendium of Transportation Facts and Trends
- Miami-Dade County Freight Plan – 2013 Update
- O-D Surveys for Local Bus Route – Phase I (Central Garage)
- Palmetto Intermodal Terminal Feasibility
- Safe Routes to School Plans 2013 Infrastructure Plans
- Transit System Bicycle Plan for Miami-Dade County
- Transportation Planning Process: Development of Computerized Techniques Project

**ELEMENT 5: SPECIAL PROJECT PLANNING**

---

**METHODOLOGY:**

The MPO Secretariat has an existing open contract with five (5) consulting firms to assist staff in conducting transportation planning related activities. These services are on an as-needed basis and work orders are assigned to the consultants based on an established selection process.

**Type of Services**

The consultant will be required to perform any one or more of the following activities:

- Data collection regarding traffic and transit information, such as: traffic counts, accident records, surveys, passenger counts, vehicle delays, etc.
- Update and analyze existing transportation data to determine transportation needs including, but not limited to travel demand and air quality modeling, level of services (LOS) and future travel projections.
- Preparation of maps, presentations and reports using state-of-the-art techniques, including but not be limited to Geographic Information System (GIS), 3-D effects and any other visual tools available in the market.
- Any other miscellaneous activities that may be needed to support the MPO Secretariat's Transportation Planning Process.
- Studies awarded in late fiscal year 2014, awarded through the “Call for Ideas” fiscal year 2015 efforts as identified on page 5-5 and to be awarded through the “Call for Ideas” solicitation process during fiscal year 2016.

**Process**

- A Scope of Work (SOW) is prepared by MPO staff in coordination with the appropriate agencies/entities that will be involved in the development of the study.
- This draft SOW will be submitted to the Florida Department of Transportation (FDOT) for comments and concurrence.
- FDOT will provide their comments and concurrence to the MPO within three (3) weeks of the receipt of the draft SOW.
- The MPO will present this draft SOW to the Transportation Planning Council (TPC) for their comments and recommendations.
- Comments received from FDOT and the TPC will be incorporated in the draft SOW, as appropriate.
- Final SOW will be submitted to the MPO Governing Board for approval.
- Once the SOW is approved by the MPO Governing Board, staff will initiate the selection process of the consultant.
- Once the consultant is selected, a Notice to Proceed (NTP) letter will be issued to the selected consultant.
- For FTA funded studies, MPO staff will request to FDOT 3<sup>rd</sup> party approval prior to issuing the NTP letter.
- For FHWA funded studies, FDOT will obtain FHWA approval of the proposed SOW.

**ELEMENT 5: SPECIAL PROJECT PLANNING**

---

- This process does not apply to studies already included in Section 5.2 “Call for Ideas” of the UPWP.

**MPO GPC Selection Process**

After SOWs are approved by FDOT and the MPO Governing Board, the following process is established for work orders assignment.

- Final SOW is provided to the consultants for consideration.
- A meeting is scheduled with all consultants to discuss the SOW with the MPO Project Manager (PM). This brainstorming session will clarify and address questions or comments from the consultants.
- A date will be established for the submission of the proposals.
- Interested consultants will provide their proposals for consideration in the selection process.
- An internal selection committee will be established to evaluate the proposals.
- The proposals will be evaluated based on:
  - Experience of the firm in similar studies/projects
  - Experience and knowledge of personnel assigned to the study/project
  - Completion time
  - Work load by consultant
  - Approach to the study/project
  - Estimated cost
- The MPO will evaluate the proposals and assign the work order to one of the firms.
- A NTP letter authorizing the work order will be issued to the consultant.
- The consultant will submit monthly invoices, as appropriate.
- A written progress report and the Monthly Utilization Report (MUR) will accompany these invoices for payment.

**Carryover studies from FY 2014 program:**

**SW 8<sup>th</sup> Street Corridor Study**

This study was assigned to consultant through the GPC Selection Process in FY 2014. The Notice to Proceed Letter was issued on November 22, 2013 and the completion date is scheduled for November 30, 2014. The total estimated cost is \$267,400 and \$30,000 for contingencies for a total of \$297,400. It is expected that by June 30, 2014, the study would be 40% completed. This includes: Study Coordination (50%), Data Collection (100%), Development and Analysis (50%) and Conceptual Design (25%).

**LeJeune Road at SW 8<sup>th</sup> Street Intersection Improvement Study**

To determine, evaluate and document various safety, operational and multimodal improvements at the intersection of SR 953/LeJeune Road with State Road 90/SW 8<sup>th</sup> Street/Tamiami Trail. Consideration will be given to alternative intersection designs and concepts, intersection widening, movement restrictions and diversion. This study was approved by the MPO Board with a budgeted amount of \$125,000.

**END PRODUCTS:**

All end products will be delivered as requested for each work order. Final and executive reports will be submitted in an electronic copy for further distribution and posting in the MPO Website.

**FYs 2015 and 2016 UNIFIED PLANNING WORK PROGRAM**

**ELEMENT 5: SPECIAL PROJECT PLANNING**

**PROJECT MANAGER:**

Jesus Guerra

**PARTICIPATING AGENCIES:**

Metropolitan Planning Organization (Primary agency)  
 Florida Department of Transportation (FDOT) District Six  
 Other agencies and entities, as appropriate.

**WORK SCHEDULE:**

Anticipated completion dates will vary with each study depending on when the work orders are issued.

**FUNDING:**

**Year 1 – FY 2014/15**

AGENCY	FHWA PL	PL Local Match	FTA 5305	FTA Local Match	FTA State Match	FHWA STP	STP Local Match	Total
MPO	9,002	1,985	0	0	0	0	0	10,987
Cons. FY 14 Carryover	0	0	390,400	48,800	48,800	0	0	488,000
Consultant	144,143	31,792	401,150	50,144	50,144	159,113 65,363	53,037 21,787	889,523 764,523
<b>Total</b>	<b>153,145</b>	<b>33,777</b>	<b>791,550</b>	<b>98,944</b>	<b>98,944</b>	<b>159,113 65,363</b>	<b>53,037 21,787</b>	<b>1,388,510 1,263,510</b>

**Year 2 – FY 2015/16\***

AGENCY	FHWA PL	PL Local Match	FTA 5305	FTA Local Match	FTA State Match	FHWA STP	STP Local Match	Total
MPO	81,930	18,070	0	0	0	0	0	100,000
Consultant	40,965	9,035	556,369	69,546	69,546	0	0	745,461
<b>Total</b>	<b>122,895</b>	<b>27,105</b>	<b>556,369</b>	<b>69,546</b>	<b>69,546</b>	<b>0</b>	<b>0</b>	<b>845,461</b>

\*The PL budget for Year 2 is illustrative until approved by the Florida Legislature.



**ELEMENT 5: SPECIAL PROJECT PLANNING**

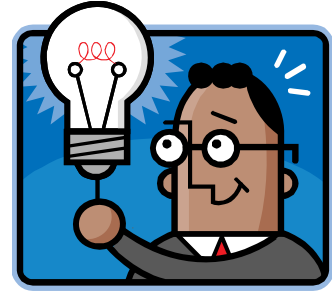
---

**TASK NUMBER AND TITLE:**

5.2 CALL FOR IDEAS

**PURPOSE:**

To solicit transportation planning ideas from the general public and other agencies that can lead to effective solutions to deal with traffic congestion in Miami-Dade County for the FY 2015 and 2016 program.



**PREVIOUS WORK:**

In the 2<sup>nd</sup> year of prior document (FYs 2013 and 2014 UPWP), the following studies were incorporated under this Task:

- Countywide Bus Access and Transfer Facility Assessment (carryover \$30,000 in PL funds to complete this study during FY 2015)
- Metromover System Expansion (to be completed within FY 2014 fiscal period)
- Bikeway Connection Plan (to be completed within FY 2014 fiscal period)
- Origin-Destination Surveys for Local Bus Service – South Garage (to be completed within FY 2014 fiscal period)
- Bicycle/Pedestrian Traffic Count Program (to be completed within FY 2014 fiscal period)
- Online Walk to School Route Planner – Phase II (this is a two-year commitment, with the second year to be completed during FY 2015)

**METHODOLOGY:**

- During the development of this document, the below ideas were recommended by the UPWP Development Committee for award during the FY 2015 (first) year of this document.
  - Countermeasures for Pedestrian and Bicycle High Crash Locations (Task 2.5)
  - Implementation Plan for EBS along Kendall Corridor (Task 5.8)
  - Parking Technology Innovations Study (Task 5.9)
  - Impact of Port Tunnel on Downtown Miami Transportation Network (Task 5.10)
  - Bus Only Lanes in Downtown Miami (Task 5.11)
  - Viability of the Conversion of Homestead Air Reserve Base (HARB) to a Joint Civilian /Military (Joint Use) Airport (Task 5.12)
  - Snapper Creek Segment “B” Master Plan (Task 5.13)
  - Regional Bicycle Route Planner (Task 5.14)
- Develop the new “Call for Ideas” brochure for FY 2016.
- Solicit the general public and other agencies through the distribution of the “Call for Ideas”.
- Shortlist ideas submitted which are applicable and feasible for transportation planning efforts.

**FYs 2015 and 2016 UNIFIED PLANNING WORK PROGRAM**

**ELEMENT 5: SPECIAL PROJECT PLANNING**

- Recommend studies which should be awarded funds for the FY 2016 program to the TPC and ultimately the MPO Governing Board.

**END PRODUCTS:**

- Countywide Bus Access and Transfer Facility Assessment
- Online Walk to School Planner – Phase II
- Bikeway Connection Plan
- FY 2016 studies to be adopted by the Board will be incorporated into the second fiscal year of this document under this work element.

#	FY 2016 NEW STUDIES TITLE AND DESCRIPTION	Amount
1	<p><b>Bike Friendly Miami-Dade Plan</b> To prepare a “Bike-Friendly Community” plan and application for Miami-Dade County to the League of American Bicyclists with supporting data collection, analysis, policy review, agency coordination, public involvement and recommendations. The project will also facilitate additional “bike-friendly” applications for other local governments, universities and businesses.</p>	\$130,000
2	<p><b>Federal Planning Emphasis Areas for Miami-Dade County</b> Conduct a comprehensive analysis of accessibility and connectivity within the Miami-Dade County network. Development of accessibility performance measures requires analytical tools to relate land uses and the County’s transportation infrastructure. Addressing the Ladders of Opportunity emphasis area requires a robust multimodal approach to the accessibility analysis to ensure that residents, and particularly underserved residents, have adequate access to essential services. This study will address both emphasis areas and be utilized to supplement the County’s LRTP with an additional planning resource to improve the connectivity, accessibility, and livability of Miami-Dade County for both residents and visitors.</p>	\$85,000
3	<p><b>Optimizing Transit Revenue and Capacity</b> Limited revenue and funding options have resulted in a transit system that has either shrunk or has largely remained unchanged despite a substantial growth in population and mobility needs. New methods of transit fee and fare collection need to be looked at to cater to previously untapped transit markets and increase overall transit ridership. The objectives of this study is to: (1) Increase transit ridership by leveraging fixed-costs of services; (2) Use transit fare to match service supply and demand; (3) Proportionately distribute cost of services by user-type and time-of-day; (4) Leverage technology to make fare collection system more nimble and demand-responsive; and, (5) Tap into new revenue sources. The study will focus on revenue neutral and revenue generating scenarios while trying to capture previously untapped transit markets.</p>	\$145,000
4	<p><b>Evaluating Feasibility of Superarterials</b> The urbanized Miami-Dade area has fewer highway lane miles than many comparable urban areas in the country. Construction of new limited-access facilities, given the density and impacts, is becoming less feasible or prohibitively expensive. In an era of where mobility needs outstrip transportation funding, there is a need to reassess established arterial streets to increase capacity and optimize</p>	\$130,000

**FYs 2015 and 2016 UNIFIED PLANNING WORK PROGRAM**

**ELEMENT 5: SPECIAL PROJECT PLANNING**

	operations. A few such methods include prioritizing vehicle or user types or better controlling demand. Achievement of the stated study objective will potentially result in a capacity increase and congestion reduction while minimizing adverse environmental impacts typically associated with improvements of such type.	
<b>5</b>	<b>Safe Routes to School 2015</b> To develop “Safe Routes to School” plans for at least 10 selected elementary schools that identify “safe routes” infrastructure improvements, cost estimates and a walking map for each, and to prepare FDOT funding applications for selected schools.	\$70,000
<b>6</b>	<b>Evaluation of Multimodal Options in South Miami Dade</b> To identify and evaluate potential roadway, transit, and non-motorized improvements in the South Miami-Dade area, defined as the area east of Krome Avenue between SW 88 <sup>th</sup> Street and SW 344 <sup>th</sup> Street, such that they can be the identified improvements can be programmed for implementation.	\$140,000
<b>7</b>	<b>Visualization Tool of Travel Flow</b> The overarching goal is to make travel flow information available to the residents, professional community and elected officials via the internet. The approach to be employed is by automating the process of extracting travel-origin destination information from the U.S. Census and the Long Range Transportation Plan (LRTP) and by providing a graphic visualization end-product that facilitates user the analysis of person travel movement information. To provide the needed functionality, a web-enabled application is to be developed that hosts a geo-database that can tie together the geographic and non-geographic information at micro-analysis zone (MAZ). In essence, data in various forms is inputted into a centralized geo-database that resides at the MPO. The geo-database will allow user-defined and pre-defined queries that answer the most typical questions posed by the public and public officials. Furthermore, the open architecture and off-the-shelf software to be used for the application to be developed, is to allow a number of queries to be executed. Output and/or the result of such queries can be formatted into both tabular and geographic (map) forms.	\$165,000
<b>Total</b>		<b>\$865,000</b>

**PROJECT MANAGER:**

Oscar Camejo, MPO

**PARTICIPATING AGENCY:**

Miami-Dade Metropolitan Planning Organization

**WORK SCHEDULE:**

- Start Date: November, 2014
- End Date: September 2016 (Studies may be completed beyond this date for FY 2016 new studies)

**FYs 2015 and 2016 UNIFIED PLANNING WORK PROGRAM**

**ELEMENT 5: SPECIAL PROJECT PLANNING**

**FUNDING:** The first year funding will be for the solicitation on new ideas to be incorporated into the second year of the document. The new transportation planning studies will be funded during the second year of this program, thus the disparity of funds in the below tables.

**Year 1 – FY 2014/15**

AGENCY	FHWA PL	PL Local Match	FTA 5305	FTA Local Match	FTA State Match	FHWA STP	STP Local Match	Total
MPO	45,062	9,938	8,000	1,000	1,000			65,000
Cons. FY 14 Carryover	0	0	55,200	6,900	6,900	0	0	69,000
Consultant	356,396 167,957	78,604 37,043	68,000	8,500	8,500			520,000 290,000
<b>Total</b>	<b>401,458 213,019</b>	<b>88,542 46,981</b>	<b>131,200</b>	<b>16,400</b>	<b>16,400</b>	<b>0</b>	<b>0</b>	<b>654,000 424,000</b>

**Year 2 – FY 2015/16\***

AGENCY	FHWA PL	PL Local Match	FTA 5305	FTA Local Match	FTA State Match	FHWA STP	STP Local Match	Total
MPO	24,579	5,421	0	0	0	0	0	30,000
Consultant	70,460 0	15,540 0	207,200	25,900	25,900	0	0	345,000 259,000
<b>Total</b>	<b>95,039 24,579</b>	<b>20,961 5,421</b>	<b>207,200</b>	<b>25,900</b>	<b>25,900</b>	<b>0</b>	<b>0</b>	<b>375,000 289,000</b>

\*The PL budget for Year 2 is illustrative until approved by the Florida Legislature.

- Complete FY 2014 recommended studies:
  - Countywide Bus Access and Transfer Facility Assessment (Originally awarded in FY 2014, work effort to be completed with FY 2014 \$69,000 in Section 5305(d) funds from this task and \$31,000 in FY 2014 Section 5305 (d) funds from GPC task 5.1. Analyze and determine the adequacy and effectiveness of bus and auto access and loading/unloading areas and facilities (stops/stations and terminals) at and along existing Miami-Dade County transit routes/facilities (Metrorail, Metromover, Tri-Trail and Metrobus) and develop a comprehensive, short-term and long-term Transit System Bus Access and Transfer Facility Master Plan for implementing an integrated network of transit improvements. The plan will be done for current conditions, for the next 5-10 years and for the next 10-20 year time frames and develop a comprehensive list of prioritized recommendations.
  - Online Walk to School Route Planner – Phase II (original commitment of two-year effort began in FY 2014, second year to be funded under this task using \$50,000 in FY 2015 PL funds). This is the second year of a two-year project awarded through the Call for Ideas program to develop an on-line Safe Routes to School mapping system for 50 Elementary schools. Parents will be able to use the system to identify a walking route from home to the school in their district based on the location of sidewalks, marked crosswalks, traffic signals and crossing guards.
  - Bikeway Connection Plan (funded in FY 2014 with \$20,000 in STP and \$30,000 in PL funds) Identify projects and strategies to improve the connectivity of the existing bikeway network to useful destinations and other non-motorized facilities.

**ELEMENT 6: REGIONAL PLANNING**

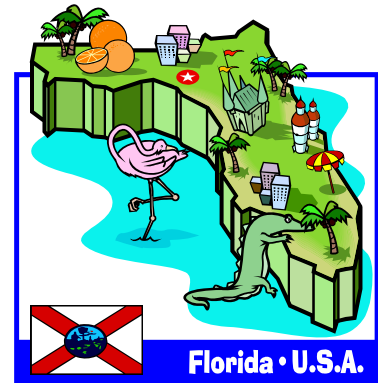
---

**TASK NUMBER AND TITLE:**

6.1 REGIONAL SUPPORT

**PURPOSE:**

To support a collaborative regional transportation planning process which enhances the integration between local transportation planning and regional planning, and insures a multi-jurisdictional coordination of transportation plans and programs for the Miami Urbanized Area.



**PREVIOUS WORK:**

- Created the Southeast Florida Transportation Council (SEFTC), Regional Transportation Technical Advisory Committee (RTTAC), and RTTAC Subcommittees for Modeling, Public Participation, and Freight issues.
- Prepared the 2035 Regional Long Range Transportation Plan (RLRTP).
- Identification of regional corridors and Network
- Transportation Regional Incentive Program (TRIP) project prioritization lists
- Regional TIP
- Regional Freight Plan
- Regional Transit System Master Plan
- Regional Non-Motorized and Greenway Plans
- Southeast Regional Planning Model (SERPM) 7.0

**METHODOLOGY:**

The MPOs will support and participate in the activities of the Southeast Florida Transportation Council (SEFTC) and its Committees, including:

- Regional Transportation Technical Advisory Committee (RTTAC)
- RTTAC Modeling Subcommittee
- RTTAC Public Participation Subcommittee
- RTTAC Freight Subcommittee
- Prepare the 2040 Regional Transportation Plan (RTP) for Southeast Florida.
- Complete and maintain updated the Regional Freight Plan as a component to the RTP
- Update and maintain the SEFTC website.
- Review and recommend TRIP priorities for adoption by the SEFTC and transmittal to FDOT.
- Update the Regional TIP based upon the local TIP projects of regional significance.
- Review and coordinate transportation plans to ensure continuity at county boundary lines consistent planning effort among all transportation modes.
- Work cooperatively with other partner agencies for implement the Seven50 vision recommendations.
- Perform travel demand modeling activities supporting both the 2040 RTP and local 2040 LRTP efforts including the coding and managing of existing+committed and cost feasible plan networks.

**ELEMENT 6: REGIONAL PLANNING**

---

- Review and update on regional map and projects.
- Integrate results from the Climate Change Integration Pilot Project into the Regional Transportation Plan.
- Attending and supporting South Florida Regional Transportation Authority (SFRTA) Planning Technical Advisory Committee (PTAC) meetings.

**END PRODUCTS:**

- 2040 Regional Transportation Plan (RTP). June 2015
- Coordination of TRIP project prioritization and selection (ongoing).
- Support for the Southeast Florida Transportation Council activities (ongoing).
- SERPM model networks for existing+committed and cost-feasible plans. December 2014
- Updated Regional Freight Plan. October 2014

**PROJECT MANAGER:**

Wilson Fernandez

**PARTICIPATING AGENCIES:**

Miami-Dade Metropolitan Planning Organization (Primary Agency)  
Broward Metropolitan Planning Organization (Contributing Partner)  
Palm Beach Metropolitan Planning Organization (Contributing Partner)  
Florida Department of Transportation (Contributing Partner)  
South Florida Regional Transportation Authority  
Miami-Dade Expressway Authority  
Miami-Dade Transit  
Broward County Transit  
PalmTran  
South Florida Regional Planning Council  
Treasure Coast Regional Planning Council

**WORK SCHEDULE:**

This work item is a program of continuing activities.

- Start Date: July 2014
- End Date: September 2016

**FYs 2015 and 2016 UNIFIED PLANNING WORK PROGRAM**

**ELEMENT 6: REGIONAL PLANNING**

**FUNDING:**

**Year 1 – FY 2014/15**

AGENCY	FHWA PL	PL Local Match	Broward PL Transfer	Palm Beach PL Transfer	FTA State Match	FHWA STP	STP Local Match	Total
MPO	45,061	9,939	0	0	0	0	0	55,000
Consultant**	81,930	18,070	100,000	100,000	0	0	0	300,000
	61,448	13,552						275,000
<b>Total</b>	<b>126,991</b>	<b>28,009</b>	<b>100,000</b>	<b>100,000</b>	<b>0</b>	<b>0</b>	<b>0</b>	<b>355,000</b>
	<b>106,509</b>	<b>23,491</b>						<b>330,000</b>

**Year 2 – FY 2015/16\***

AGENCY	FHWA PL	PL Local Match	Broward PL Transfer	Palm Beach PL Transfer	FTA State Match	FHWA STP	STP Local Match	Total
MPO	114,702	25,298	0	0	0	0	0	140,000
Consultant**	0	0			0	0	0	0
<b>Total</b>	<b>114,702</b>	<b>25,298</b>	<b>0</b>	<b>0</b>	<b>0</b>	<b>0</b>	<b>0</b>	<b>140,000</b>

\*The PL budget for Year 2 is illustrative until approved by the Florida Legislature.

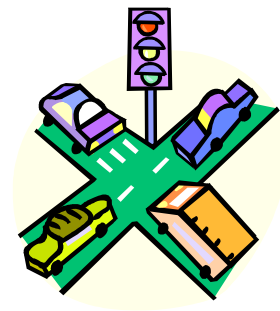
\*\* \$100,000 has been pooled along with equal amounts from Broward and Palm Beach MPO funds for the Miami-Dade MPO to administer the 2040 RL RTP Southeast Florida study. The total contribution for this 3-year effort is \$900,000 by the three MPOs. FY 2015 is the last of three years.

**ELEMENT 2: DATA COLLECTION**

---

**TASK NUMBER AND TITLE:**

2.4 HIGHWAY TRAFFIC COUNTING PROGRAM



**PURPOSE:**

Collect and provide information on the **current and historic trends of the countywide highway traffic-counting system** as necessary to support for transportation systems planning, short-range highway planning, service concurrency evaluation for the Comprehensive Development Master Plan, project level analyses, and the private sector.

**PREVIOUS WORK:**

- Four hundred sixty-two (462) station locations counted annually during calendar years 2011-2013.

**METHODOLOGY:**

- Increase traffic count collect stations to seven hundred (700) locations. Traffic counts are held Tuesdays through Thursdays for 72 consecutive hours.
- Identify traffic count location deficiencies county-wide with specific recommendations for additional locations.
- Collect traffic data at selected sites along County and City roads. FDOT provides data counts for the state highway system.
- Convert raw data to Average Weekday Daily Traffic (AWDT) Counts and report information by time-of-day.
- Catalog Miami-Dade County traffic volume information on traffic count lists for the current year.
- Maintain database (system programming and master data file) containing history of Miami-Dade County traffic counts for each traffic count station.
- Maintain station number and station location description lists and station number map for Miami-Dade County traffic count stations.
- Complete the needed tasks for system programming.
- Update hardware, software and training as needed.

**END PRODUCT:**

- AWDT count list and station map for past calendar year published and distributed annually per calendar year.

**PROJECT MANAGER:**

Cal Green

**PARTICIPATING AGENCIES:**

Public Works and Waste Management (PWWM)  
Miami-Dade MPO



**FYs 2015 and 2016 UNIFIED PLANNING WORK PROGRAM**

**ELEMENT 2: DATA COLLECTION**

---

**WORK SCHEDULE:** There is no specific deadline for this task. This work item is a program of continuing planning activities.

- Start Date: July 2014
- End Date: June 2016

**FUNDING:**

**Year 1 – FY 2014/15**

AGENCY	FHWA PL	PL Local Match	FTA 5303	FTA Local Match	FTA State Match	FHWA STP	STP Local Match	Total
PWWM	61,447	13,553	0	0	0	0	0	75,000
Consultant	0	0	0	0	0	0	0	0
<b>Total</b>	<b>61,447</b>	<b>13,553</b>	<b>0</b>	<b>0</b>	<b>0</b>	<b>0</b>	<b>0</b>	<b>75,000</b>

**Year 2 – FY 2015/16\***

AGENCY	FHWA PL	PL Local Match	FTA 5303	FTA Local Match	FTA State Match	FHWA STP	STP Local Match	Total
PWWM	61,447	13,553	0	0	0	0	0	75,000
Consultant	0	0	0	0	0	0	0	0
<b>Total</b>	<b>61,447</b>	<b>13,553</b>	<b>0</b>	<b>0</b>	<b>0</b>	<b>0</b>	<b>0</b>	<b>75,000</b>

\*The PL budget for Year 2 is illustrative until approved by the Florida Legislature.

**MPO RESOLUTION #24-16**

**RESOLUTION APPROVING AN AMENDMENT TO THE FYs 2015 AND 2016 UNIFIED PLANNING WORK PROGRAM (UPWP) TO DE-OBLIGATE FYs 2015 AND 2016 PLANNING AND FY 2015 SURFACE TRANSPORTATION PROGRAM FUNDS FROM TASKS 2.4 HIGHWAY TRAFFIC COUNTING, 5.1 GENERAL PLANNING CONSULTANT, 5.2 CALL FOR IDEAS AND 6.1 REGIONAL SUPPORT**

WHEREAS, the Interlocal Agreement creating and establishing the Metropolitan Planning Organization (MPO) for the Miami Urbanized Area requires that the MPO provide a structure to evaluate the adequacy of the transportation planning and programming process; and

WHEREAS, the Miami-Dade MP Unified Planning Work Program (UPWP) is a Two-Year planning document that is currently authorized for State Fiscal Years 2015 and 2016; and

WHEREAS, Federal Highway Administration (FHWA) funds that are currently programmed, but not anticipated to be expended by the state fiscal year-end of June 30, 2016, require de-obligation of needed funds for the future reprogramming into the next Two-Year UPWP cycle that begins on July 1, 2016,

NOW, THEREFORE, BE IT RESOLVED BY THE GOVERNING BOARD OF THE METROPOLITAN PLANNING ORGANIZATION FOR THE MIAMI URBANIZED AREA, that the amendment to the FYs 2015 and 2016 Unified Planning Work Program (UPWP) to de-obligate FYs 2015 and 2016 planning (PL) and FY 2015 Surface Transportation Program (STP) funds from Tasks 2.4 Highway Traffic Counting, Task 5.1 General Planning Consultant, 5.2 Call For Ideas and 6.1 Regional Support is hereby approved.

The adoption of the foregoing resolution was moved by Board Member Rebeca Sosa. The motion was seconded by Board Member Barbara J. Jordan, and upon being put to a vote, the vote was as follows:

**Chairman** Jean Monestime-Aye  
**Vice Chairman** Francis Suarez-Aye

Board Member Bruno A. Barreiro	-Aye	Board Member Smith Joseph	-Absent
Board Member Esteban Bovo Jr	-Aye	Board Member Philip Levine	-Absent
Board Member Jose "Pepe" Diaz	-Absent	Board Member Daniella Levine Cava	-Aye
Board Member Audrey M. Edmonson	-Aye	Board Member Roberto Martell	-Aye
Board Member Maurice Ferre	-Aye	Board Member Dennis C. Moss	-Aye
Board Member Oliver G. Gilbert, III	-Absent	Board Member Jeff Porter	-Aye
Board Member Perla Tabares Hantman	-Absent	Board Member Rebeca Sosa	-Aye
Board Member Carlos Hernandez	-Absent	Board Member Javier D. Souto	-Absent
Board Member Sally A. Heyman	-Aye	Board Member Xavier L. Suarez	-Aye
Board Member Barbara J. Jordan	-Aye	Board Member Juan C. Zapata	-Absent

The Chairperson thereupon declared the resolution duly passed and approved this 21<sup>st</sup> day of April, 2016.

**METROPOLITAN PLANNING ORGANIZATION**

By Zainab Salim  
 Zainab Salim, Clerk  
 Miami-Dade MPO

