



# **The Tale of Three Cities**

## **Connectivity and Livability**

**By Meg Daly**





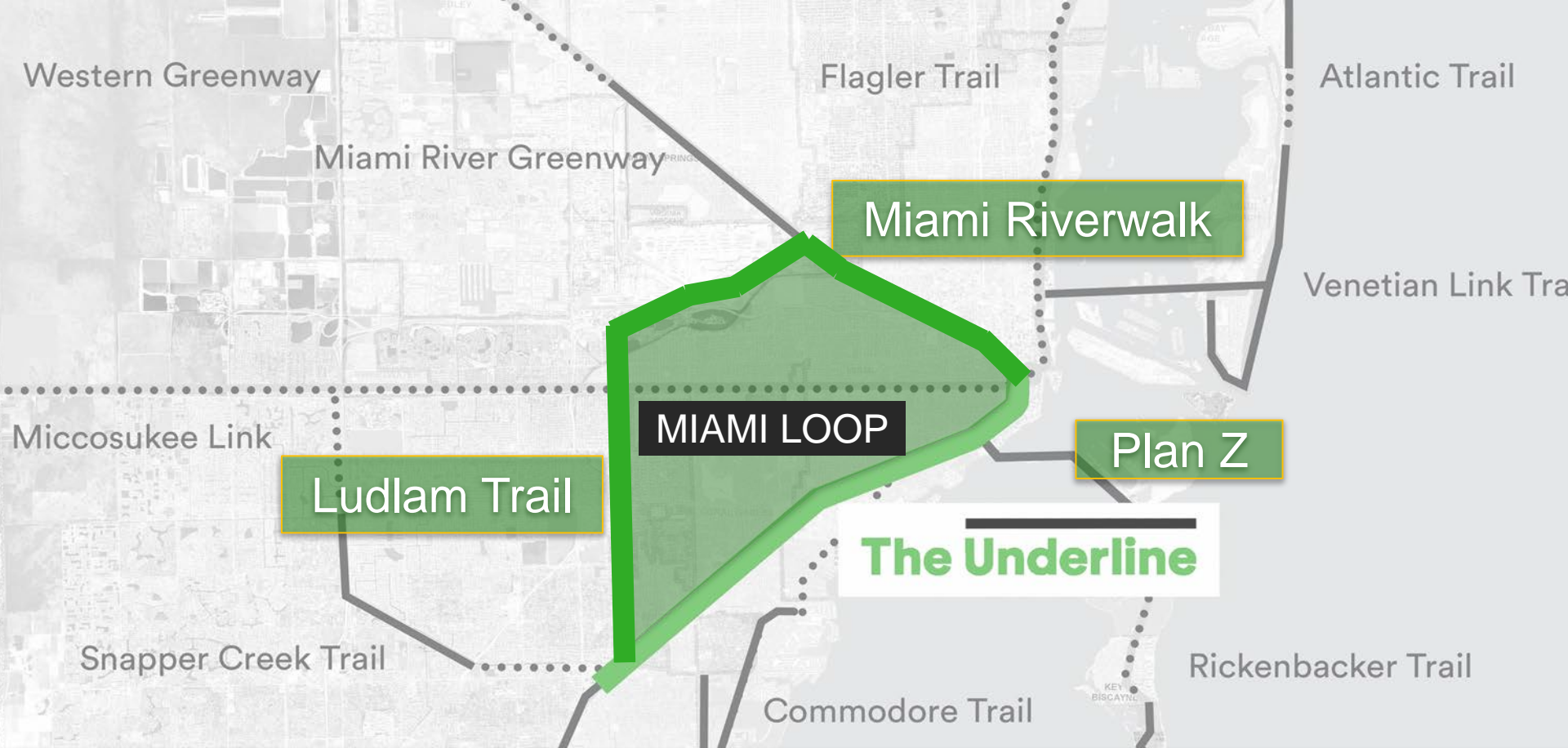
# Miami



## The Underline



# County Greenway System

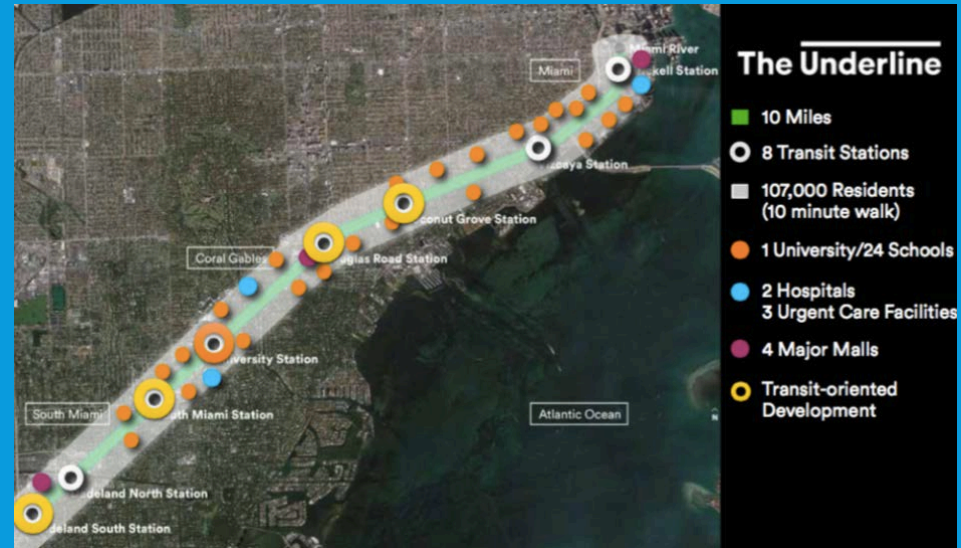


# SPINE OF 22-MILE MIAMI LOOP

Connecting Underline, Ludlam Trail, and Miami River Greenway and Plan Z



# Big Ideas, Big Impacts



## IMPROVE INTERSECTIONS

ESTABLISH THREE TYPES OF INTERSECTION APPROACHES:

### + MAJOR IMPROVEMENTS : 5 OR MORE INTERSECTIONS

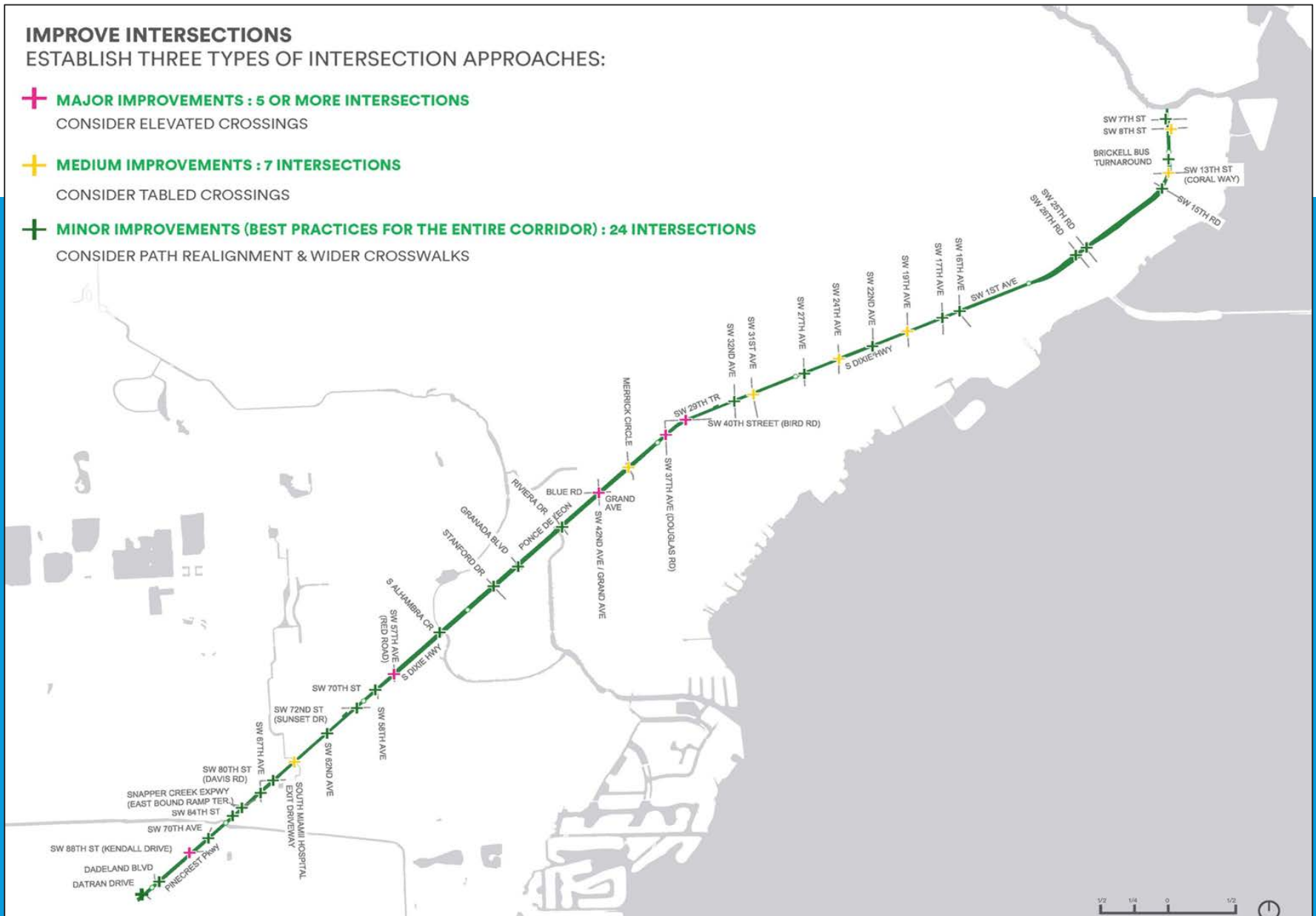
CONSIDER ELEVATED CROSSINGS

### + MEDIUM IMPROVEMENTS : 7 INTERSECTIONS

CONSIDER TABLED CROSSINGS

### + MINOR IMPROVEMENTS (BEST PRACTICES FOR THE ENTIRE CORRIDOR) : 24 INTERSECTIONS

CONSIDER PATH REALIGNMENT & WIDER CROSSWALKS







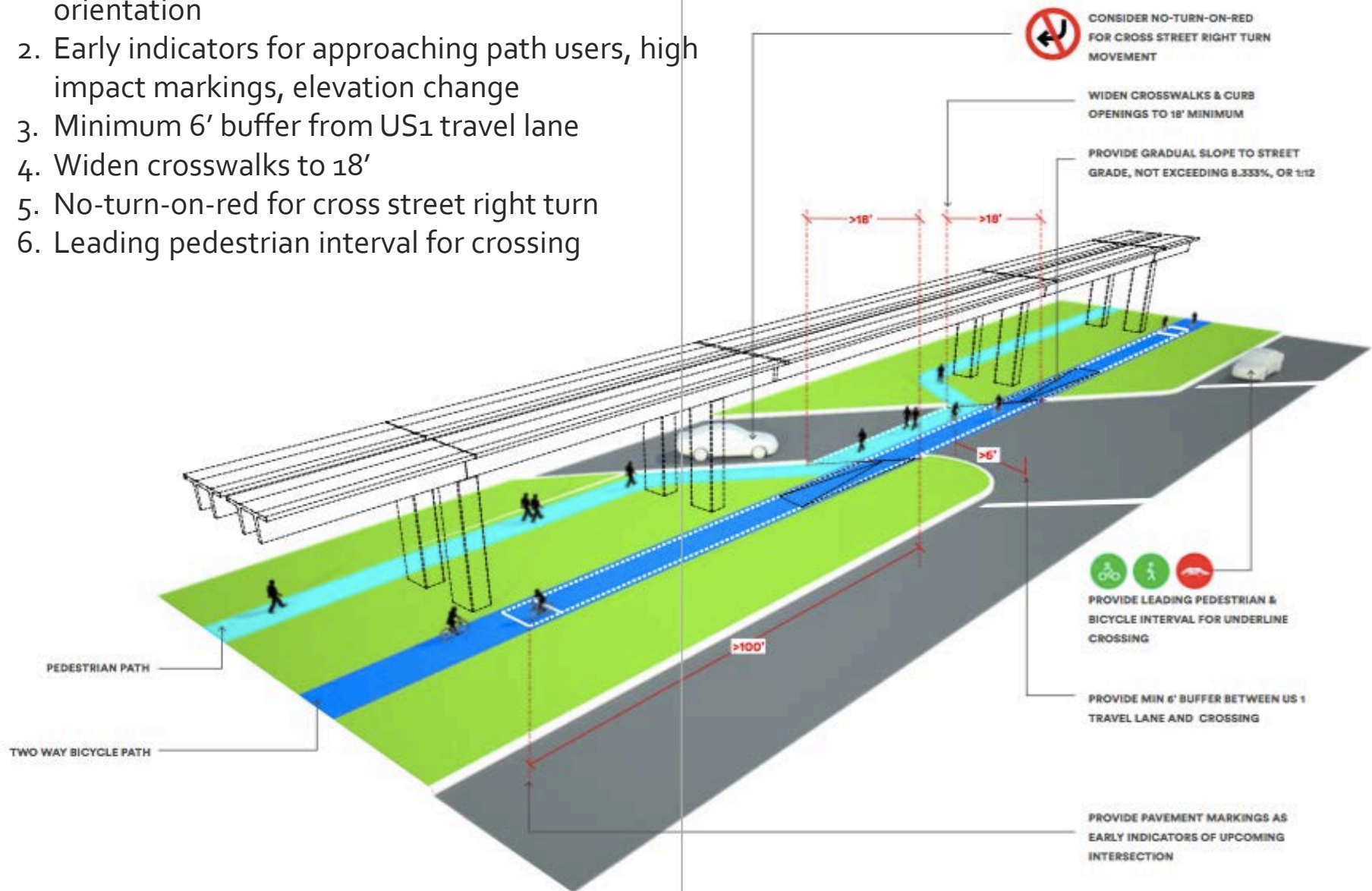
COCONUT GROVE  
3 1/2 MILES  
↑







1. Realign path approach to improve visibility & orientation
2. Early indicators for approaching path users, high impact markings, elevation change
3. Minimum 6' buffer from US1 travel lane
4. Widen crosswalks to 18'
5. No-turn-on-red for cross street right turn
6. Leading pedestrian interval for crossing







# Copenhagen

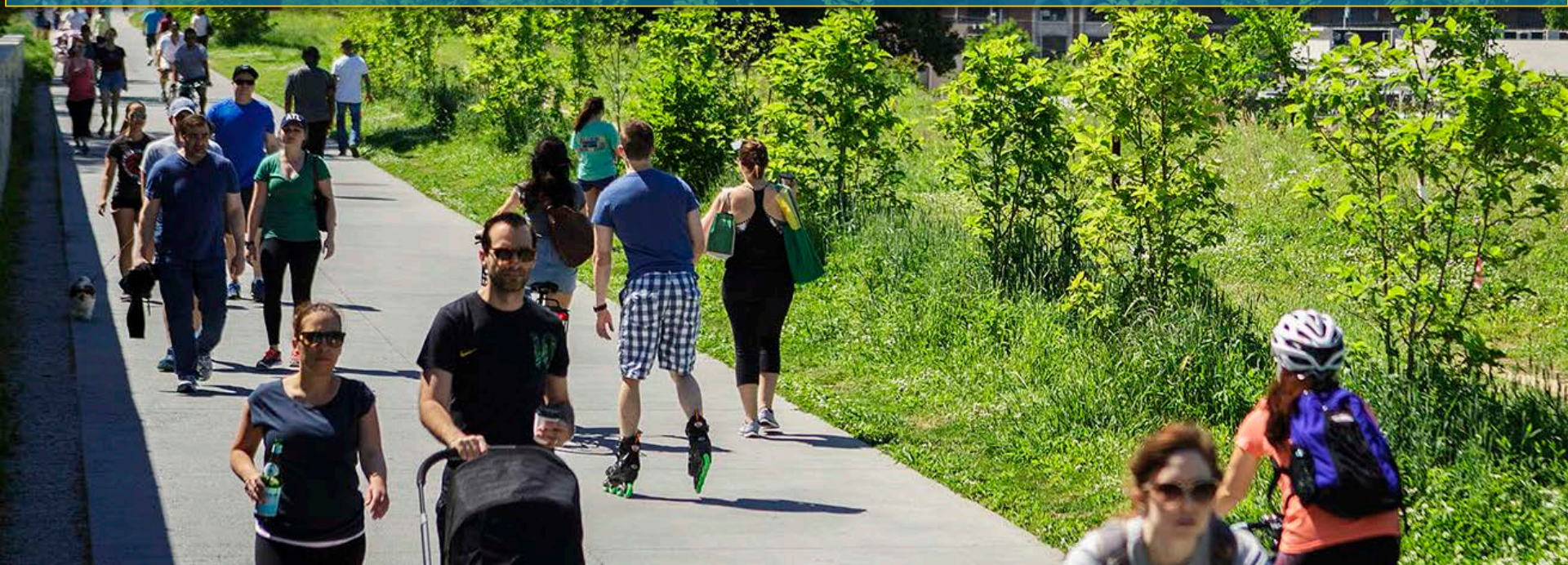


# Copenhagen

- Copenhageners love their bikes (more bikes than citizens).
- 50% of all residents commute by bike. 35% living outside the city commute by bike (most have a bike/transit connection.)
- **Transit oriented development**
- First + last mile + safety: 250 miles of biking lanes (with bike traffic lights connect to hub & spoke transit system & expansion.)



# Atlanta









# Atlanta

- Love their cars.
- 8.7 miles of off road trails built (of 33 planned).
- One million users per year.
- Trail economic impact estimated \$1 Billion to date.
- **Affordable housing & TOD.**
- Love their trail! Voted by referendum for 1% sales tax for transit expansion and light light rail for Beltline.

# Want A Liveable City?

- Create safe accessible first & last mile connections to transit.
- Complete streets improve safety & multi-modal transportation.
- Walkable, bikeable communities.
- Community-wide access to all modes of transport.
- Live, Work, Play Environments.
- Access to work, amenities & destinations.



**Thank You!**