

Socio-Economic Data Maps Year 2010

Map 1: Households by TAZ

Map 2: Households without Children by TAZ

Map 3: Households with Children by TAZ

Map 4: Workers by TAZ

Map 5: Population by TAZ

Map 6: Employment by MAZ

Map 7: K-8 School Enrollment by School in MAZ

Map 8: High School Enrollment by School in MAZ

Definitions:

Employment: Employees employed in MAZ

Enrollment: Students enrolled by school in MAZ

Household: Person or Persons Living Together

MAZ: Micro Analysis Zone

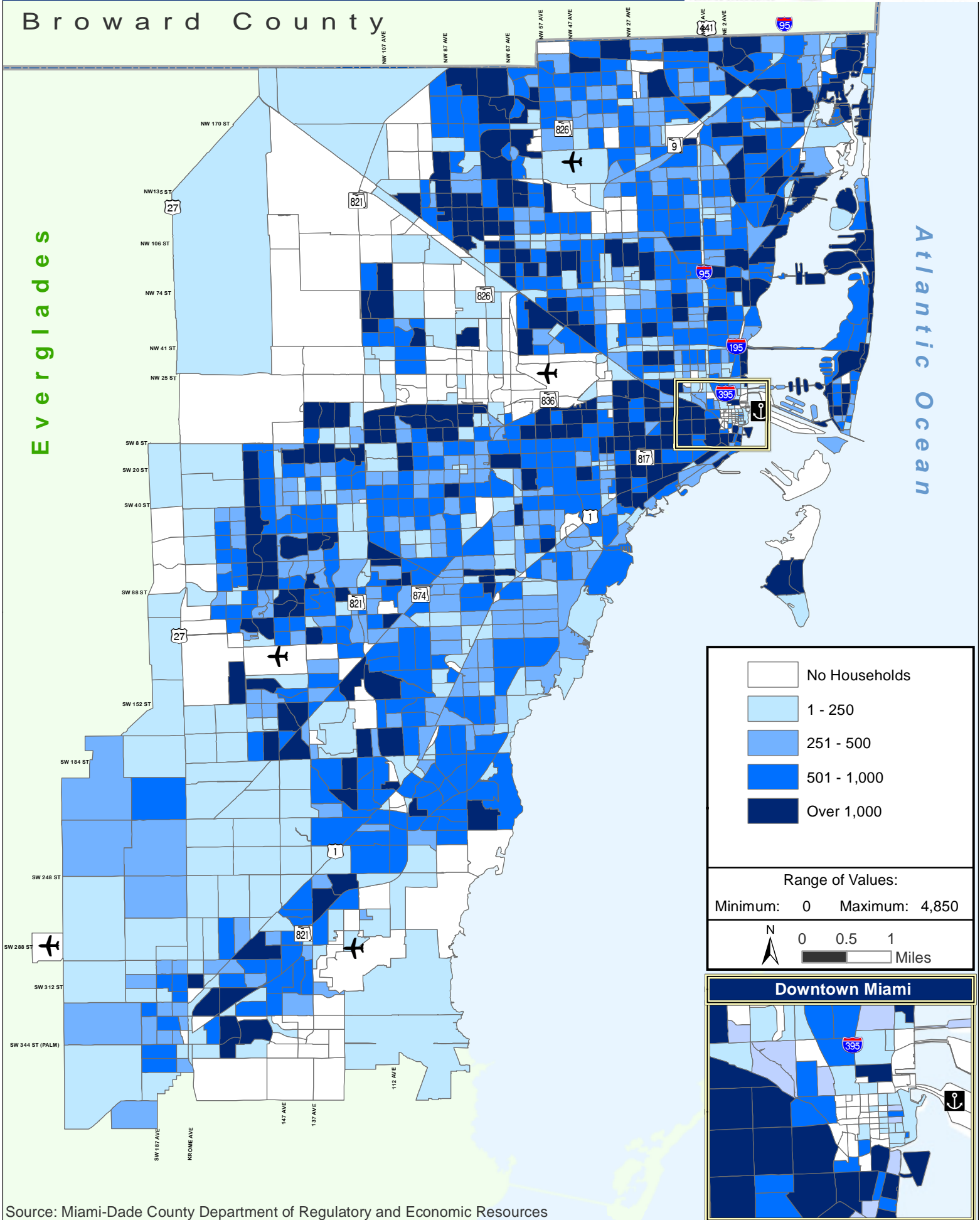
TAZ: Traffic Analysis Zone

Workers: Employees within a household

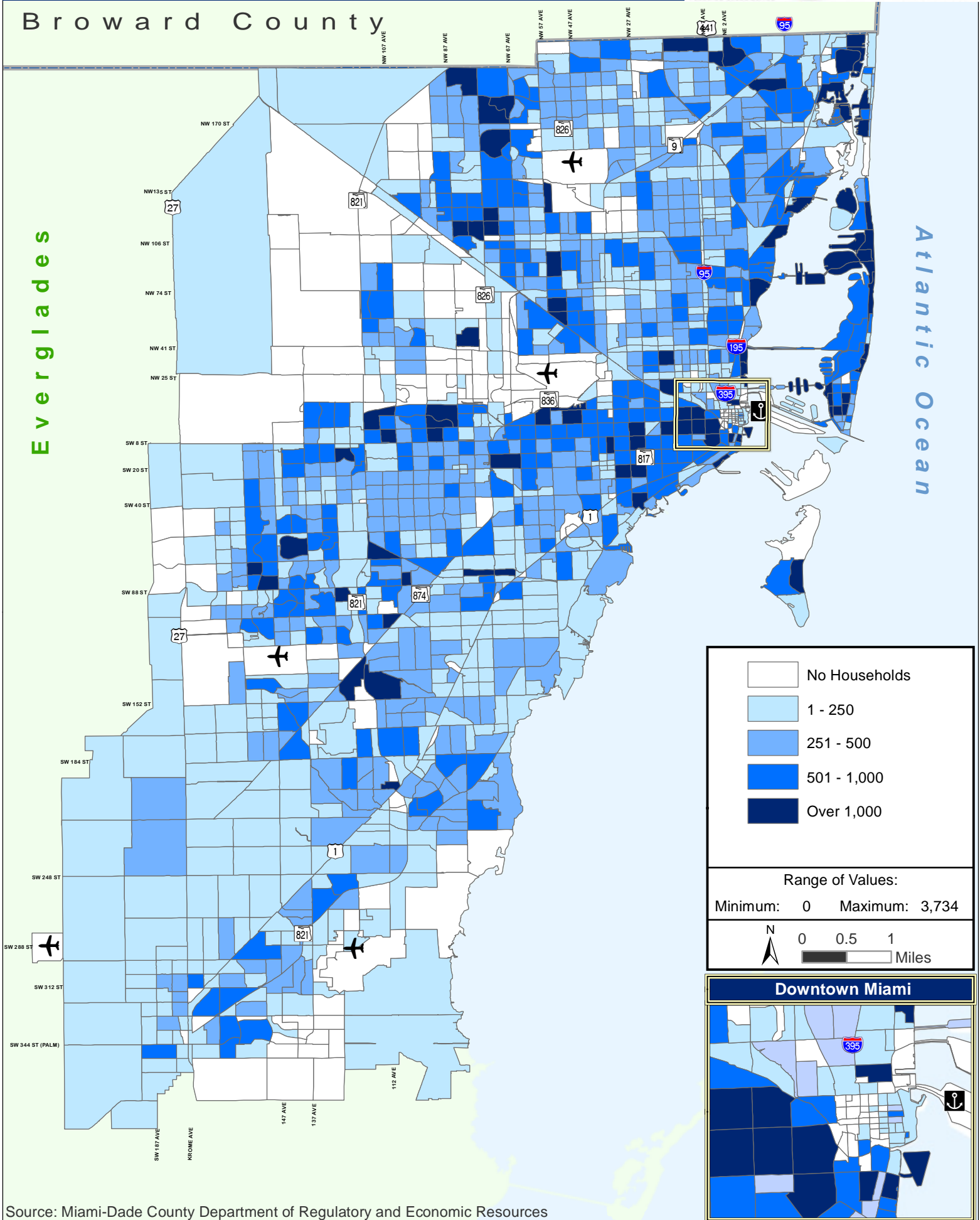


MOBILITY OPTIONS
2040 Miami-Dade
Transportation Plan
EYES ON THE FUTURE

Broward County

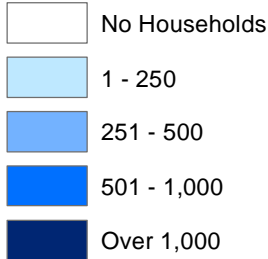


Broward County

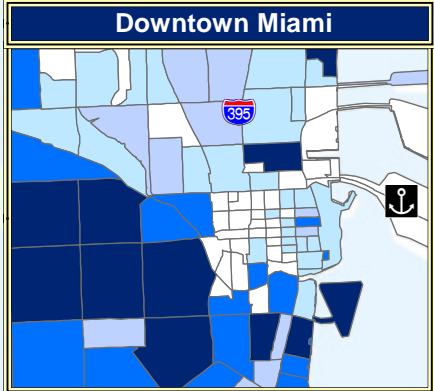


Everglades

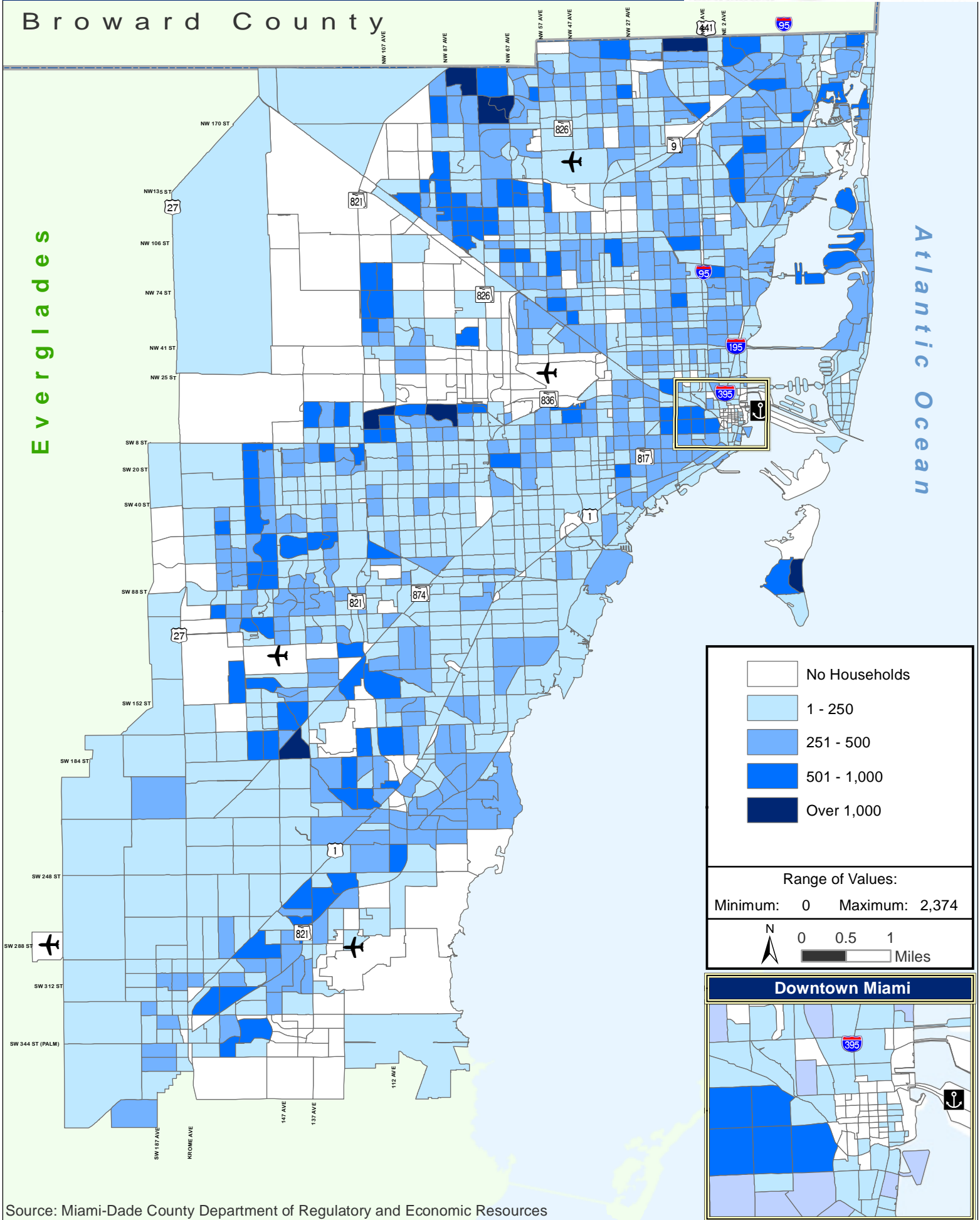
Atlantic Ocean



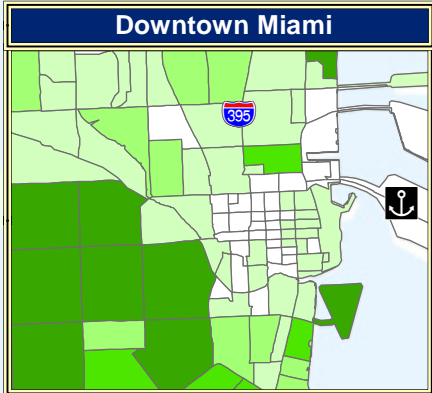
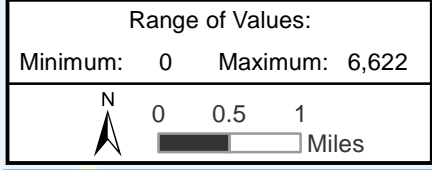
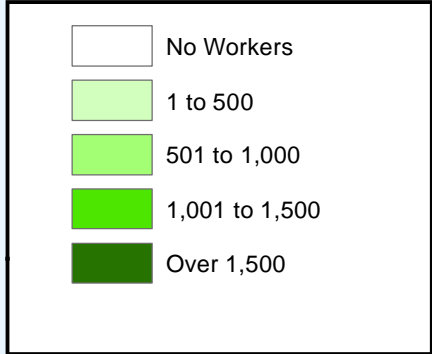
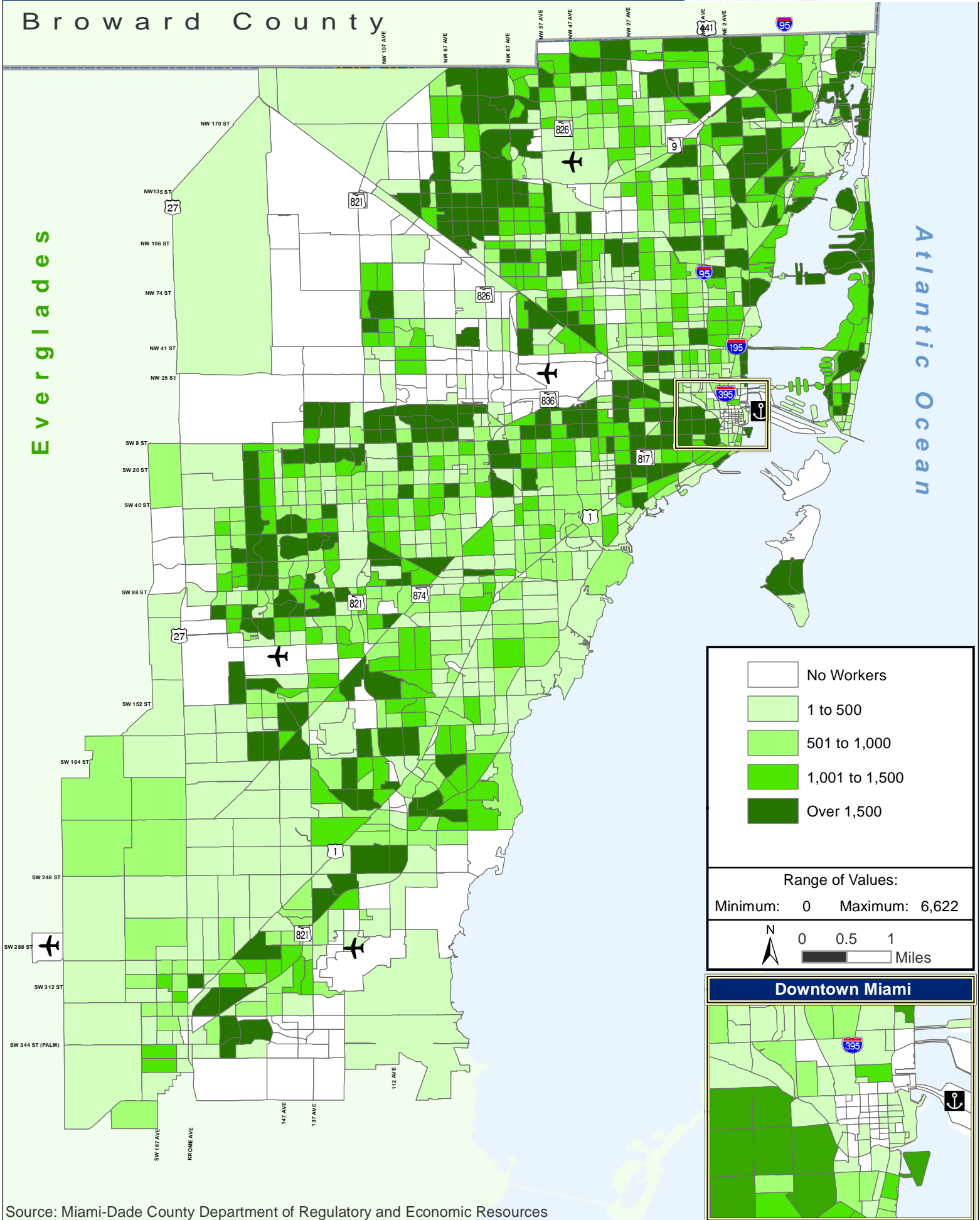
Range of Values:
Minimum: 0 Maximum: 3,734



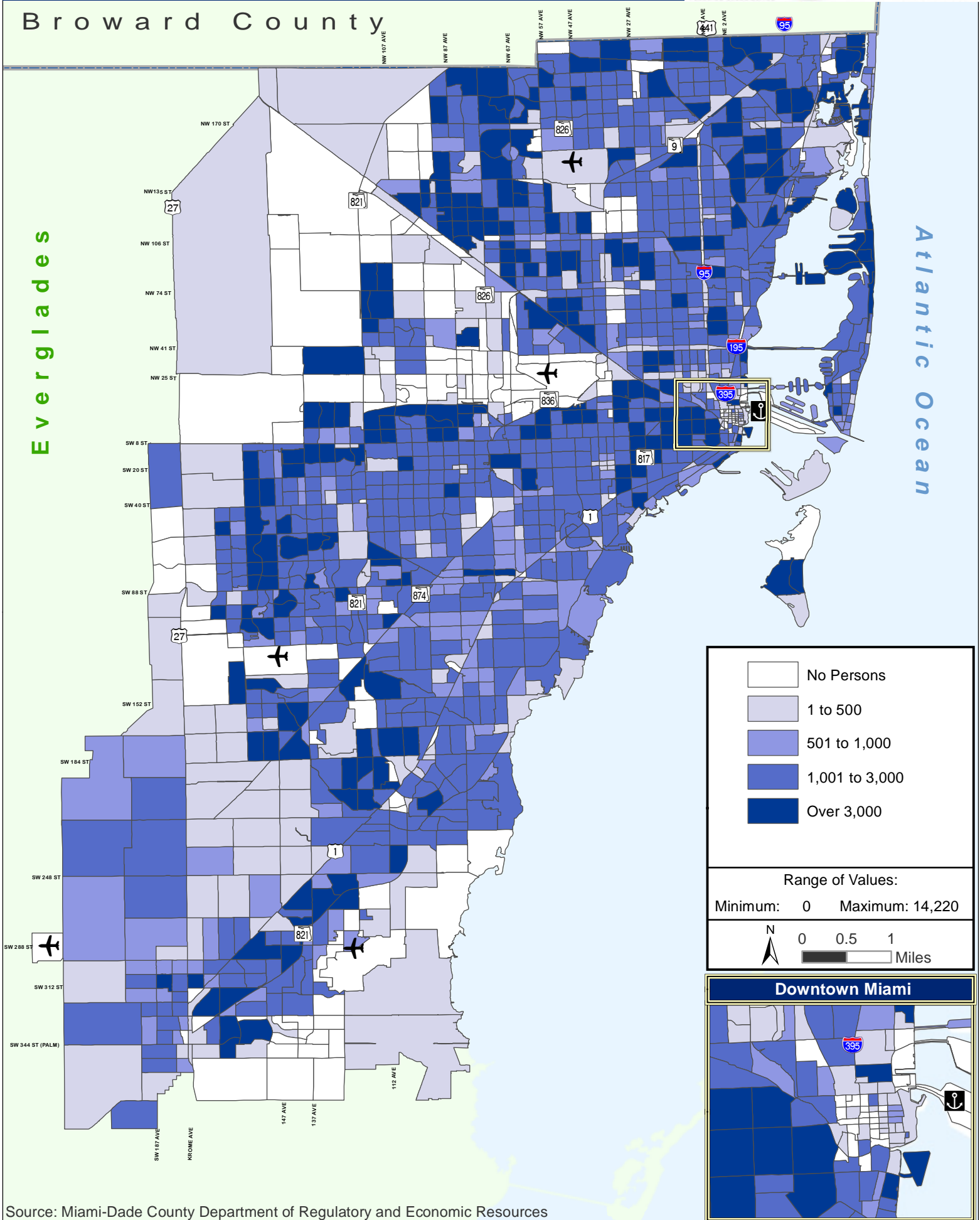
Broward County



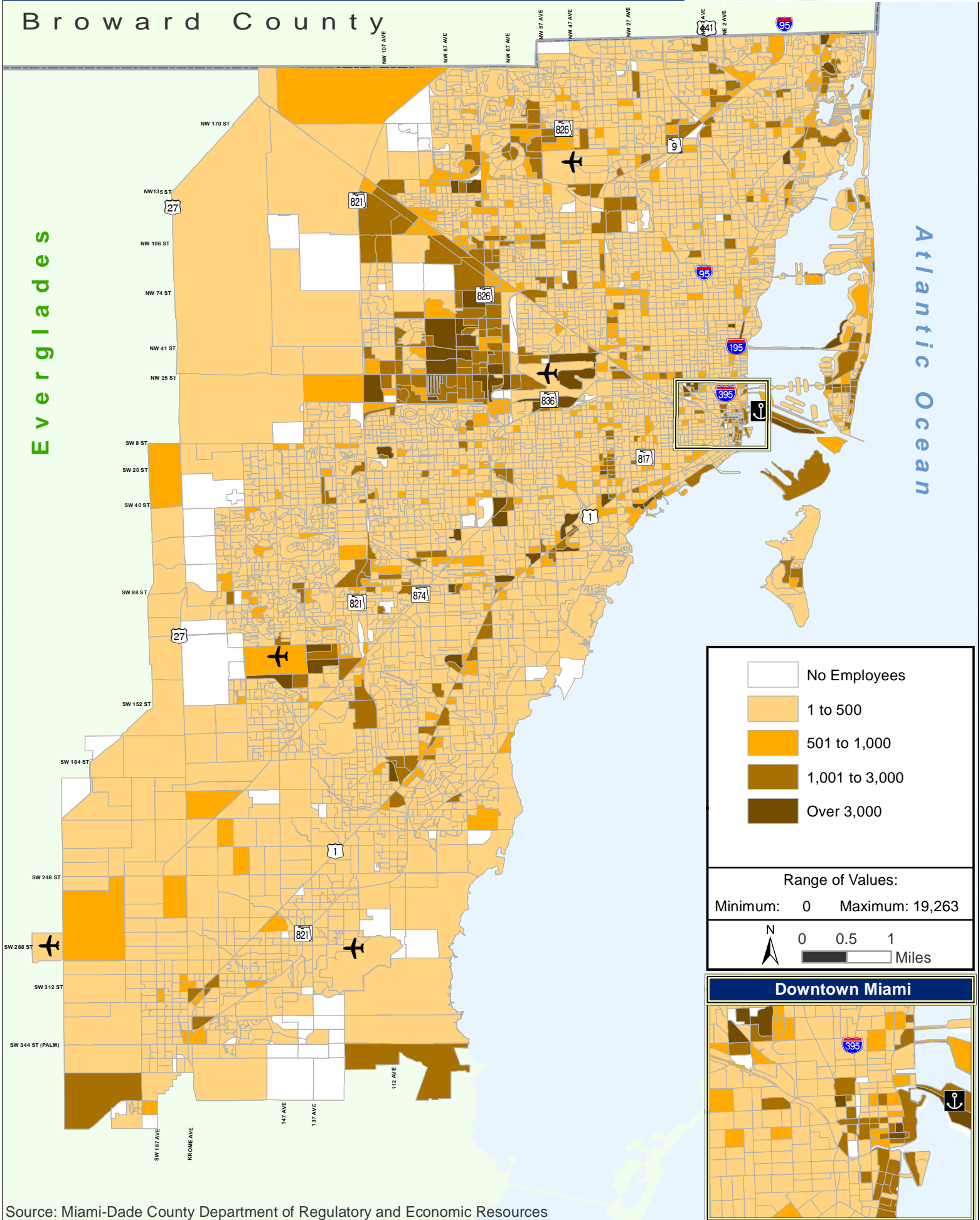
Broward County



Broward County

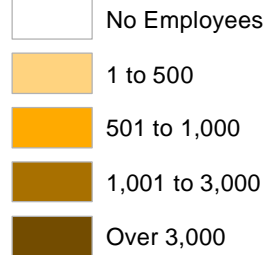


Broward County

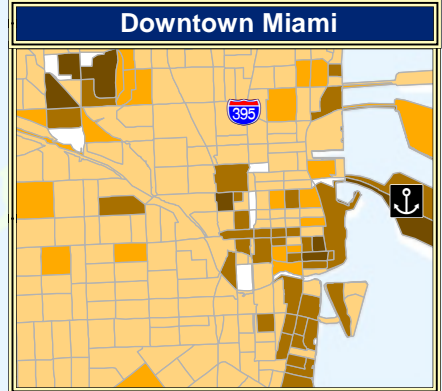


Everglades

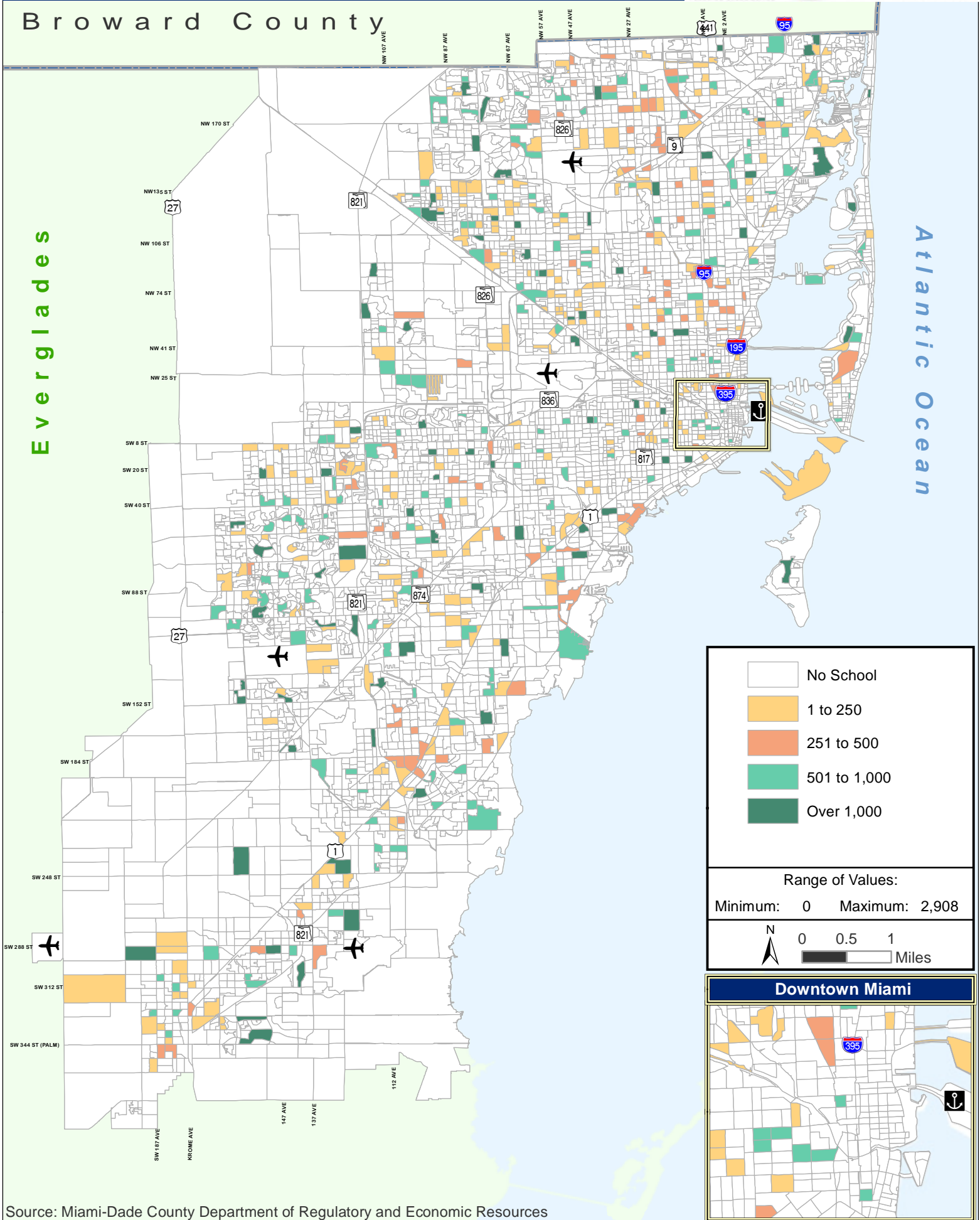
Atlantic Ocean



Range of Values:
Minimum: 0 Maximum: 19,263



Broward County



Broward County

