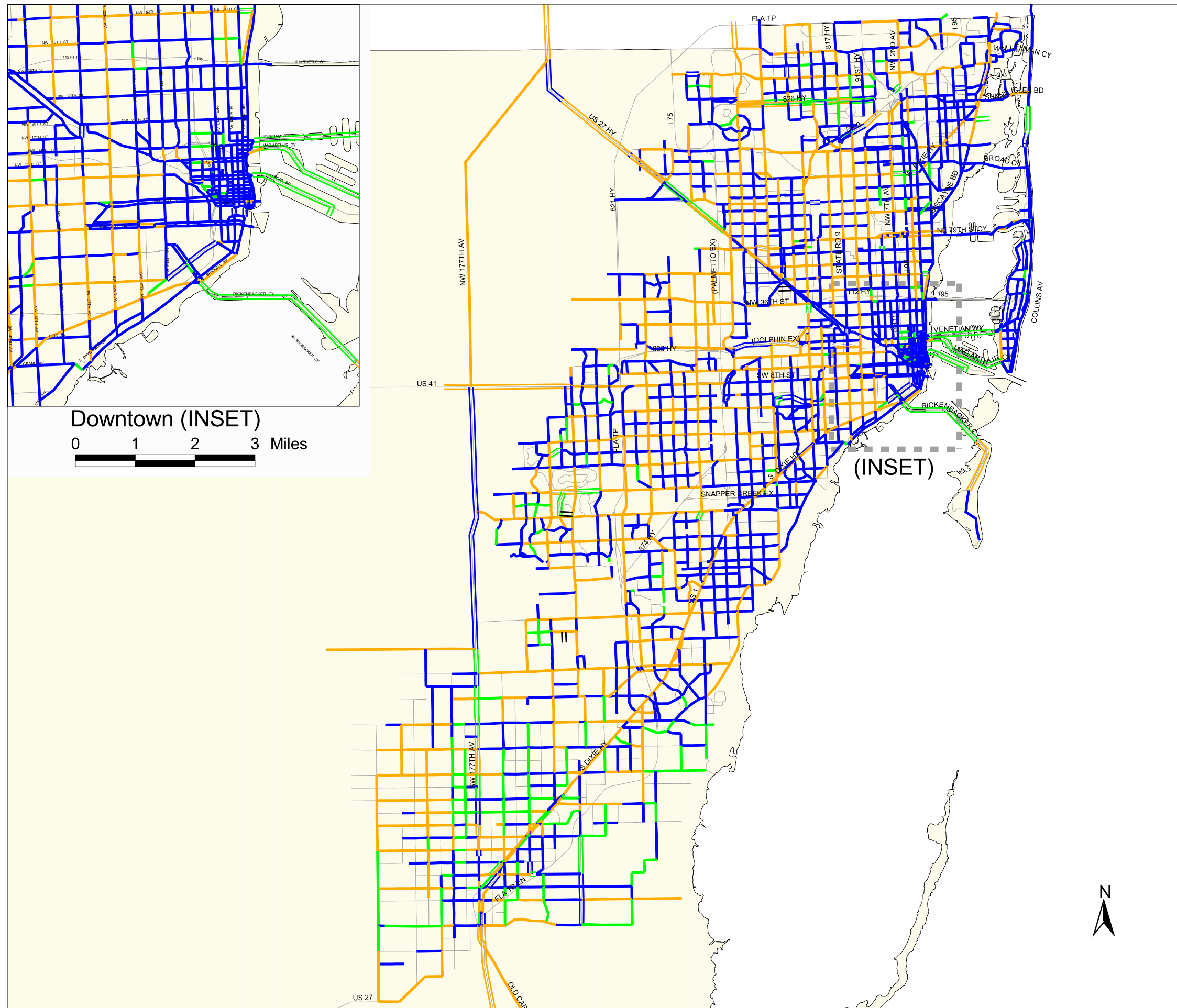


# Bicycle Suitability Miami-Dade County



## Legend

### Roadways with Paved Shoulder/Bike Lane

— More Suitable

— Less Suitable

— Least Suitable

— Not Ranked

### Roadways without Paved Shoulder/Bike Lane

— More Suitable

— Less Suitable

— Least Suitable

— Other Major Roadways

**DRAFT**

0 2 4 Miles