



MIAMI-DADE METROPOLITAN
PLANNING ORGANIZATION

Federal Certification

April 22-23, 2015



The Past

2011 Certification: 7 Previous Findings (1 Corrective/6 Recommendations)



Previous Findings – Corrective Action

Transportation Improvement Plan (TIP): The TIP must include for each project the estimated total project cost(s), which may extend beyond the timeframe of the TIP in accordance with 23 CFR 450.324(e)(2).

✓ **Beginning with the FY 2012-13 to 2016-17 TIP, approved by the MPO Governing Board on May 17, 2012, all Miami-Dade MPO TIPs display total projects costs.**



Previous Findings – Recommendation

Fiscal Constraint Documentation: In reviewing the current LRTP and financial plan, fiscal constraint is not clearly documented through the text or tables in the LRTP financial plan in accordance with 23 CFR 450.322(f)(10).

✓ This recommendation was met for the 2035 LRTP on January 18, 2012

Previous Findings – Recommendation

Agreements: The MPO should continue to pursue the finalization of the Intergovernmental Coordination and Review (ICAR) and Operators of Public Transportation Coordination Joint Participation Agreement with the Florida Department of Transportation, South Florida Regional Planning Council, and Miami-Dade County as recommended in the 2007 TMA Certification report.

✓ **The ICAR was executed on February 22, 2012**

Previous Findings – Recommendation

Transit: The universal “smart” card project has been an ongoing effort in the region among Broward and Palm Beach Transit agencies. The Federal Review team recommends that the MPO continues to work with the other two MPOs to develop a strategy for a universal fare card for the Miami Urbanized area.

✓ **The transit agencies are actively working towards achieving this goal, and the Broward and Palm Beach MPOs have invested funds in the development of a transit fare transfer system compatible with the existing MDT and Tri-Rail EASY Cards, coined the “Regional Fare Interoperability Project”.**

Previous Findings – Recommendation

Public Involvement: In reviewing the Public Participation Plan (PPP), the Federal Review team noted that there is not enough information included about how the public can get engaged in the planning process, specifically with the advisory committees.

✓ The PPP was updated on May 6, 2011 to provide direction on how the general public can get engaged in the transportation planning process, specifically with the advisory committees.



Previous Findings – Recommendation

Title VI: While the Federal Review Team commends the MPO for placing these critical documents on the website, it recommends making them more visible/easier to access. The nondiscrimination policies, forms and other similar data must also be posted/available in non-electronic formats and locations.

✓ **A copy of the 2040 LRTP and TIP final documents containing the Title VI statement were provided to the Miami-Dade County Main Library and respective branch libraries to inform the general public of this statement as well as provide easy access to this important information.**



Previous Findings – Recommendation

Congestion Management Process: The Federal Review team strongly recommended that the MPO develop methods to monitor and evaluate the performance of the multimodal transportation system to identify the causes of recurring and non-recurring congestion.

- ✓ A CMP is fully incorporated into the 2040 LRTP. All analysis and performance measures established in the CMP are consistent with the LRTP. A complimentary, regional-level “Planning for Operations” component is also being prepared as part of the 2040 Regional Transportation Plan (RTP). Under that work, we are preparing a “one-stop” shop for all existing and planned for operations related efforts within the 3-county area, including both recurring and non-recurring congestion strategies.



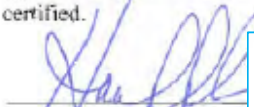
Annual MPO/FDOT D6 Joint Certifications


Based on a joint review and evaluation, the Florida Department of Transportation, District Six, and the Miami-Dade MPO recommend that the metropolitan transportation planning process for the Miami-Dade MPO be certified.


District Secretary


MPO Chairman


Based on a joint review and evaluation, the Florida Department of Transportation District Six and the Miami-Dade MPO recommend that the metropolitan planning process for the Miami-Dade MPO be certified.


District Secretary (or designee)

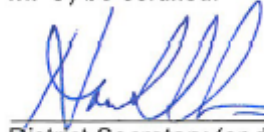

MPO Chairman (or designee)

Based on a joint review and evaluation, the Florida Department of Transportation and the Miami-Dade Metropolitan Planning Organization recommend that the Metropolitan Planning Process for the Miami-Dade Metropolitan Planning Organization be certified.


District Secretary


MPO Chairman

Based on a joint review and evaluation, the Florida Department of Transportation and the Miami-Dade MPO recommend that the Metropolitan Planning Process for the Miami-Dade MPO be certified.


District Secretary (or designee)

Date

4/14/14


MPO Executive Director (or designee)

Date

4/11/14





The Miami-Dade MPO

Who we are...



Demographics

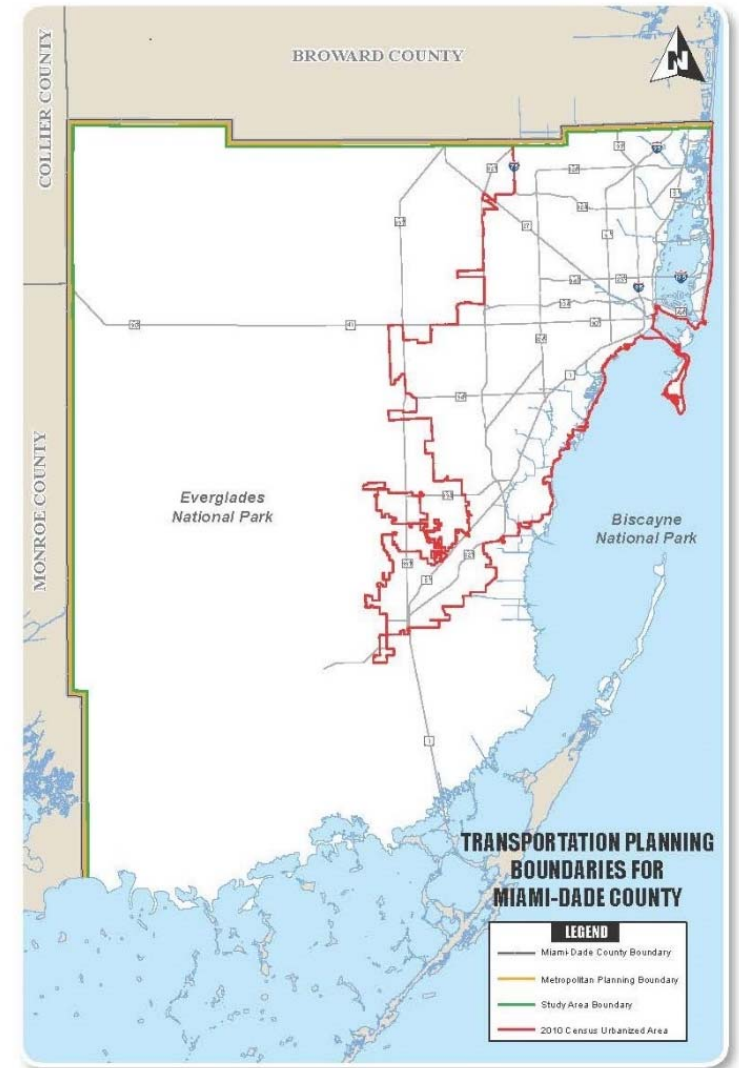
- 7th most populous county in the nation and the most populous in the State of Florida
- The current 2014 population estimate is approximately 2.6 million residents, resulting in a population growth of 4.7% from 2010 to 2014
- Projection shows Miami-Dade attaining 3.3 million residents by 2040
- County population (2010) was 15.4 percent Non-Hispanic-White, 17.1 percent Black, and 65 percent Hispanics
- The portion of land that is incorporated has expanded from 87,731 acres or 137 square miles in 1995 to 143,190 acres or 223.6 square miles as of June 2010, representing an increase of approximately 63 percent

#	Most Populous Counties in US
1	Los Angeles, California
2	Cook, Illinois
3	Harris, Texas
4	Maricopa, Arizona
5	San Diego, California
6	Orange, California
7	Miami-Dade, Florida
8	Kings, New York
9	Dallas, Texas
10	Queens, New York

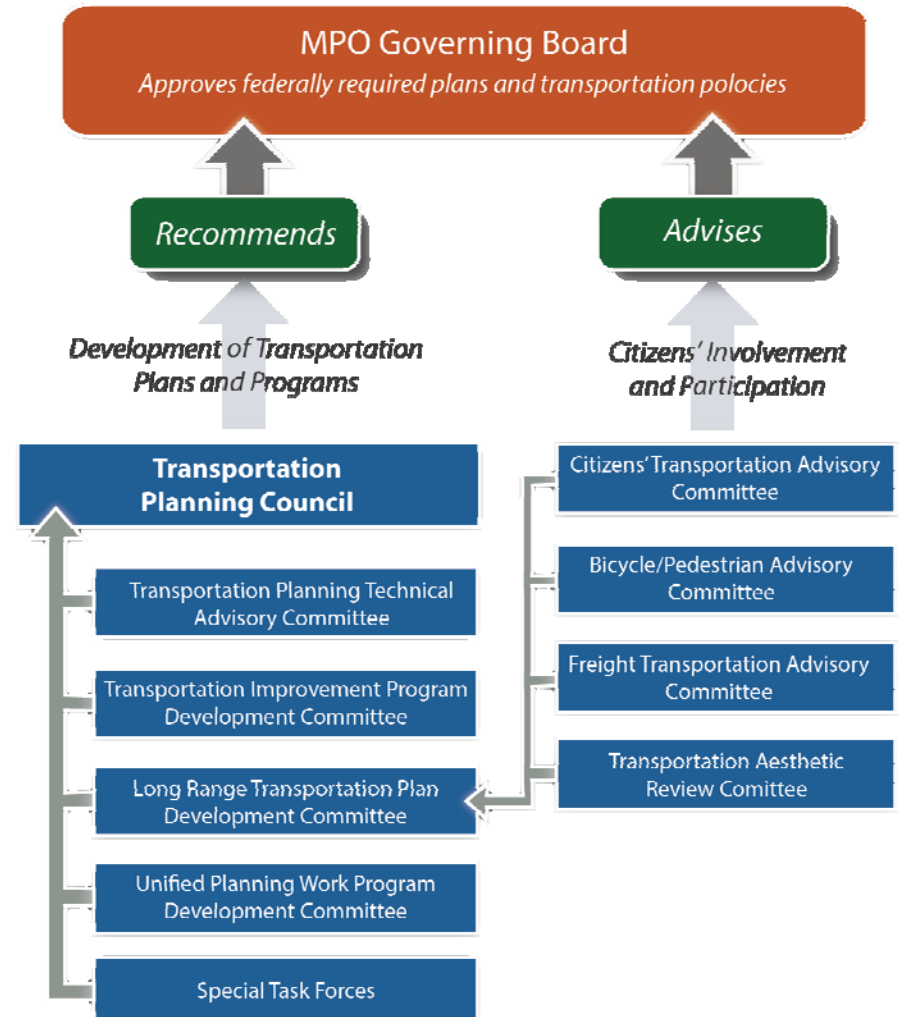
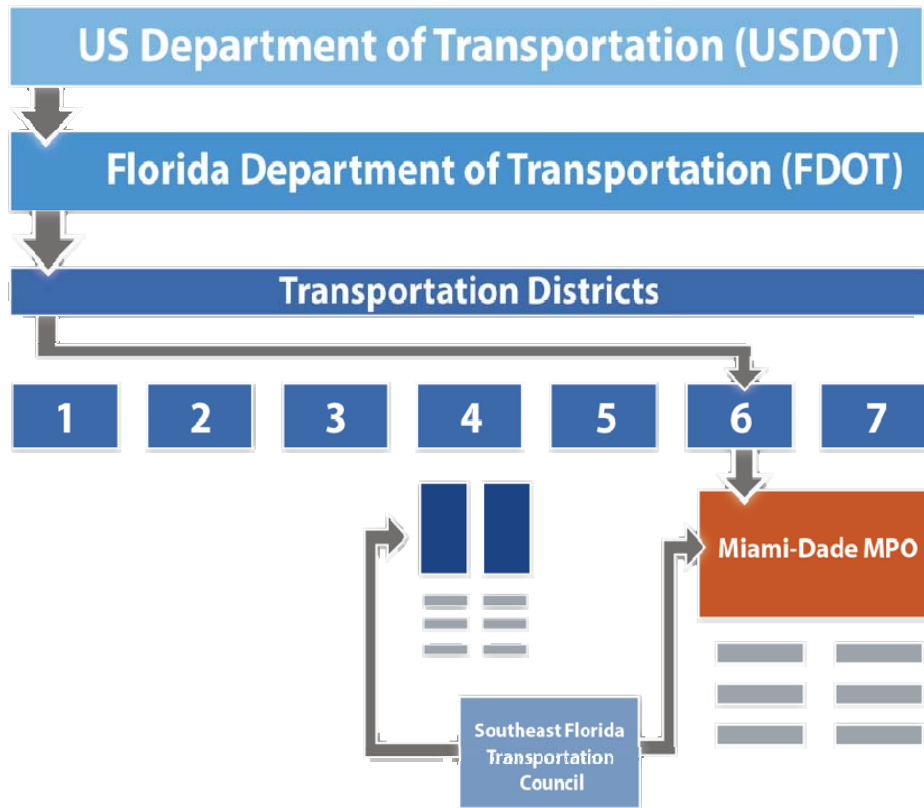


Transportation Planning Boundaries

- The Transportation Planning Boundaries for the Miami-Dade MPO overlap with the Miami-Dade County Boundaries.
- Miami-Dade County encompasses more than 2,000 square miles of land, but only over 430 square miles of urban development cradled between two national parks: Everglades National Park and Biscayne National Park.
- Everglades National Park land is protected land for which the MPO has no jurisdiction.
- All planning on federal land is coordinated with the MPO and the appropriate agencies and jurisdictions.
- The MPO divided the urban development area of Miami-Dade County into six distinct geographic units identified as Transportation Planning Areas.



MPO Structure





MIAMI-DADE METROPOLITAN
PLANNING ORGANIZATION

Governing Board Members



Jean Monestime
Miami-Dade County



Vice Chairman

Francis Suarez
City of Miami



Bruno A. Barreiro
Miami-Dade County



Esteban Bovo Jr.
Miami-Dade County



Jose "Pepe" Diaz
Miami-Dade County



Audrey M. Edmonson
Miami-Dade County



Maurice Ferre
MDX Representative



Oliver G. Gilbert III
City of Miami Gardens



Perla T. Hantman
School Board



Carlos Hernandez
City of Hialeah



Sally A. Heyman
Miami-Dade County



Barbara J. Jordan
Miami-Dade County



Smith Joseph
City of North Miami



Philip Levine
City of Miami Beach



Daniella Levine Cava
Miami-Dade County



Dennis C. Moss
Miami-Dade County



Jeff Porter
City of Homestead



Marc Sarnoff
Municipal Representative



Rebeca Sosa
Miami-Dade County



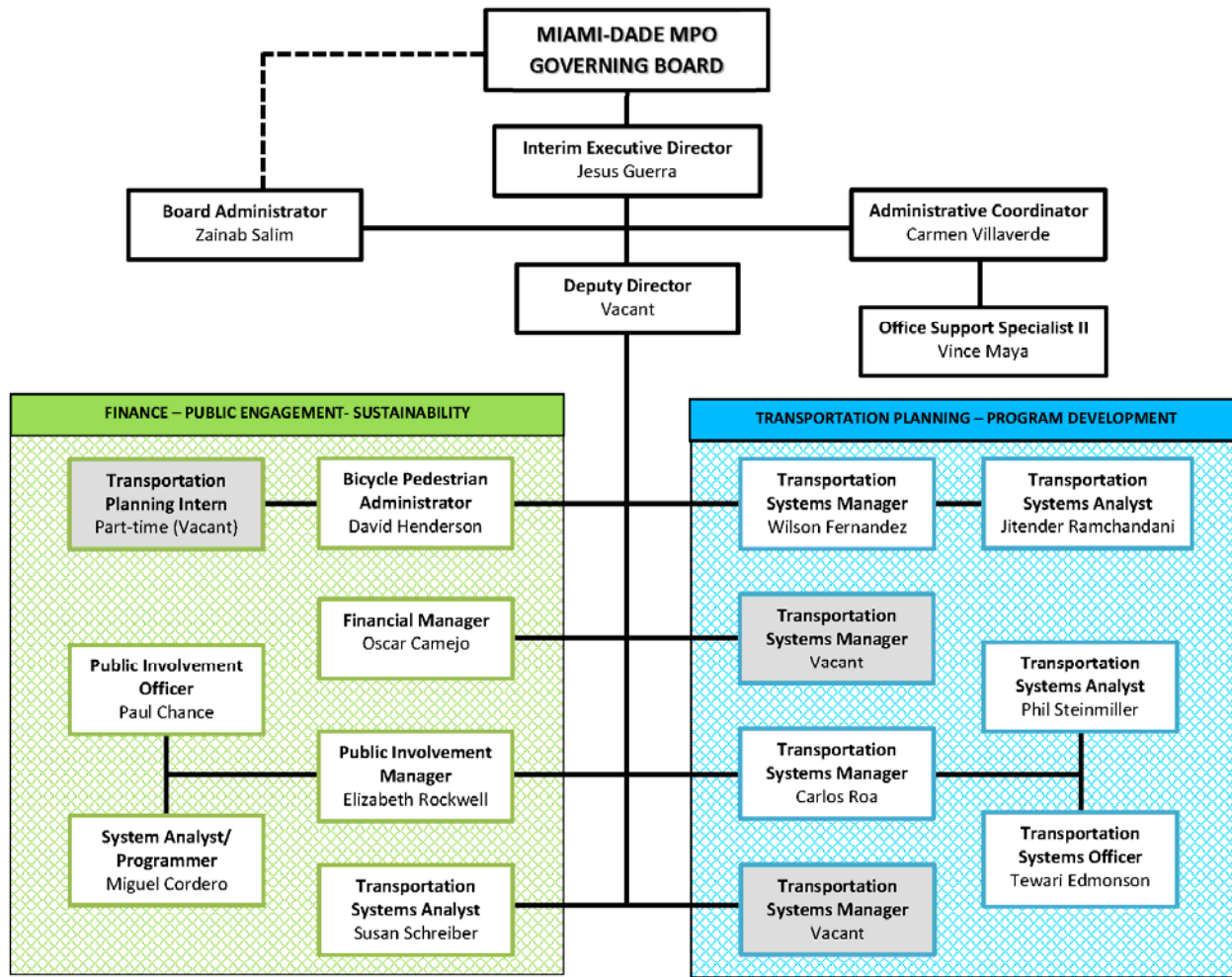
Sen. Javier D. Souto
Miami-Dade County



Xavier L. Suarez
Miami-Dade County

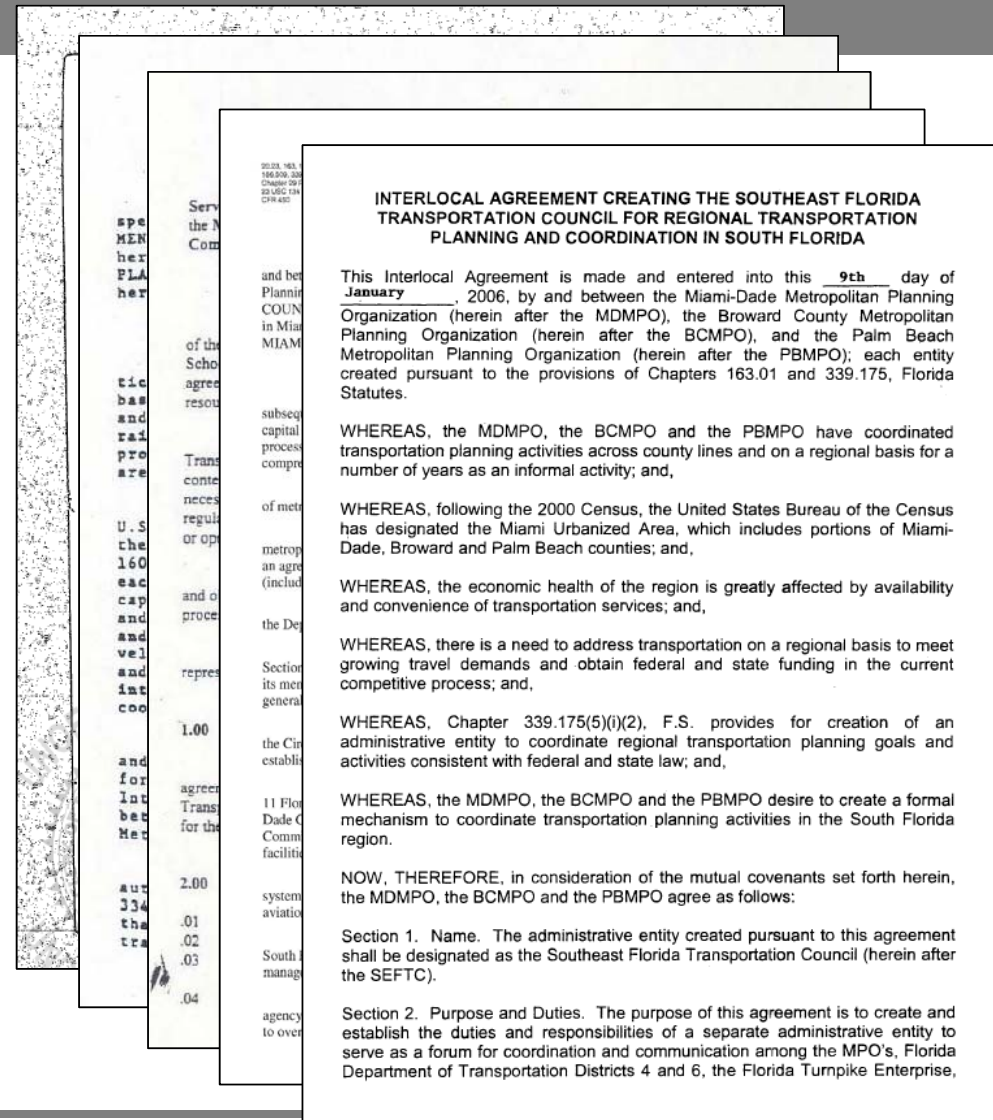


Juan C. Zapata
Miami-Dade County



Agreements

- March 2, 1977 - Interlocal Agreement creating the Miami-Dade MPO
 - ✓ April 25, 2005 – First Amendment
- April 4, 1977 - Urban Transportation Planning Agreement
- July 1, 2013 - Management Service (Staffing) Agreement (MSA)
- February 22, 2012 - Intergovernmental Coordination and Review and Public Transportation Coordination Joint Participation Agreement (ICAR)
- January 9, 2006 - Southeast Florida Transportation Council (SEFTC) Interlocal Agreement





Up to Today

What we have accomplished over the last four years

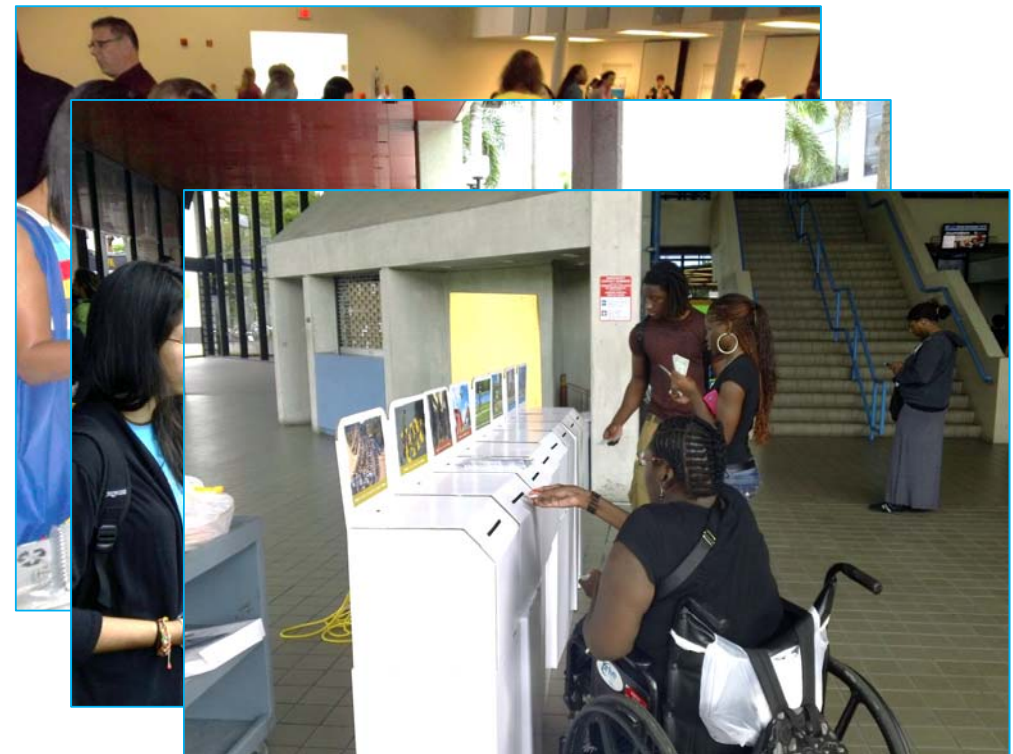


Long Range Transportation Plan (LRTP)

- Reaching Millennials
- Mobility Needs Assessment Tool
- Congestion Management Plan (CMP) Fully Integrated in the 2040 LRTP
- Detail Project Cost Estimations & Available Revenues and Cost Feasibility of Plan
- Emphasis on Transit and Freight
- Illustrative Projects: Financial Set-Asides for CMP, Non-Motorized and Freight
- Private Sector Funding



MOBILITY OPTIONS
2040 Miami-Dade
Transportation Plan
EYES ON THE FUTURE





MOBILITY OPTIONS —————
2040 Miami-Dade
Transportation Plan
————— EYES ON THE FUTURE

2040 LRTP "Eyes on the Future" Video

Transportation Improvement Program (TIP)

- Interactive Web-Based TIP for Citizens
- Interactive TIP Development Webtool for Agencies
- Citizen's Guides
- Last Four Years: \$7.17 billion in 2011 to \$8.18 billion in 2014
- Stand-Alone Sections:
 - ✓ Private Sector
 - ✓ Non-Motorized
 - ✓ Transportation Disadvantaged
 - ✓ Intelligent Transportation Systems (ITS)
 - ✓ Regionally Significant Projects
 - ✓ Congestion Management Projects



Unified Planning Work Program (UPWP)

- Two Year Work Program for all MPO Activities
- Call for Ideas
- General Planning Consultant (GPC)
- Municipal Grant Program (MGP)

Do you want to improve your commute?



Call for Transportation Ideas!

The Miami-Dade Metropolitan Planning Organization (MPO) is seeking creative ideas for transportation planning studies that will provide effective solutions to alleviate traffic congestion in the areas of highways, transit, freight, air, sea, non-motorized, and safety. Submissions will be considered for inclusion in the Unified Planning Work Program (UPWP). Ideas selected will then be recommended for adoption by the MPO Governing Board.

This is your opportunity to get involved and make a difference!

Please forward your idea(s) via email, mail, or fax by **January 30, 2015** to:



Stephen P. Clark Center
111 NW 1 Street, Suite 920
Miami, FL 33128
mipo@miamidademipo.org
(305) 375-4950 fax

Transportation Ideas
(305) 375-1888

Transportation Ideas
(305) 375-1888

Transportation Ideas
(305) 375-1888

Transportation Ideas
(305) 375-1888

Transportation Ideas
(305) 375-1888

Transportation Ideas
(305) 375-1888

Transportation Ideas
(305) 375-1888

Transportation Ideas
(305) 375-1888

Transportation Ideas
(305) 375-1888

Transportation Ideas
(305) 375-1888

Transportation Ideas
(305) 375-1888

Transportation Ideas
(305) 375-1888

Transportation Ideas
(305) 375-1888



Municipal Grant Program (MGP)

- 21 Awarded Projects to 12 Municipalities
- A combined total of \$871K Awarded
- MPO Contributed from \$20,000 to \$100,000 per Study
- MPO Participation 80%
- Municipal Participation 20%
- Areas of Interest
 - ✓ Transportation Master Plans
 - ✓ Bicycle/Pedestrian Mobility Plans
 - ✓ Multimodal
 - ✓ Municipal Trolleys
 - ✓ Traffic circulation
 - ✓ Origin-Destination
 - ✓ Greenways and Trails
 - ✓ Boardwalks



CYs 2011-14 MPO Studies' Snapshot

- All Studies Placed on MPO Website
- 67 Studies Commenced at \$8.3M
- 61 Studies Completed at \$6.2M
- 48 out of 61 studies completed (79%) have either been implemented, are being utilized, or are being advanced by other agencies
- Studies completed prior to 2011 have been constructed in the last four years such as:
 - ✓ Snake Creek Trail
 - ✓ M-Path
 - ✓ Commodore Trail
 - ✓ South Link Busway Facilities
 - ✓ DDA Mobility Plan Recommendations



Public Involvement

- Public Participation Plan
- Annual Reports
- Outreach Events
- E-Newsletters
- Media Relations
- Transportation Guide

2011 ANNUAL REPORT

THE TRANSPORTATION PLANNING AGENCY FOR MIAMI-DADE COUNTY
2012 ANNUAL REPORT

THE TRANSPORTATION PLANNING AGENCY FOR MIAMI-DADE COUNTY
2013 ANNUAL REPORT
PROVIDING PREMIER TRANSPORTATION PLANNING

THE TRANSPORTATION PLANNING AGENCY FOR MIAMI-DADE COUNTY
2014 ANNUAL REPORT
PLANNING TOMORROW TODAY



Logo, Website & Social Media

- New Logo
- New Website
 - ✓ ADA Compliant
 - ✓ 90 Different Languages
- Facebook Page
- YouTube Channel
- SlideShare Page



Title VI

→ Title VI Message

- ✓ Posted in MPO Office
- ✓ Added to Documents

→ Collaboration with:

- ✓ Libraries
- ✓ Community Action Agencies
- ✓ Minority Institutions of Higher Education (MIHE)

→ Disadvantaged Business Enterprise (DBE)



The Miami-Dade MPO complies with the provisions of
Title VI of the Civil Rights Act of 1964:

No person in the United States shall, on grounds of race, color, or national origin, be excluded from participation in, be denied the benefits of, or be subjected to discrimination under any program or activity receiving federal financial assistance.

Public participation is solicited without regard to race, color, national origin, age, sex, religion, disability, or family status.

Persons wishing to express their concerns regarding Title VI may do so by contacting:

Miami-Dade MPO
Elizabeth Rockwell, Title VI Coordinator
111 NW 1st Street, Suite 920
Miami, FL 33128
(305) 375-4507
erockwell@miamidadmpo.org



Bicycle Pedestrian Program (BPP)

→ Manage Non-Motorized Plans & Studies

- ✓ Bicycle Pedestrian Safety Plan Update
- ✓ Complete Streets Manual
- ✓ Safe Routes to School Program

→ Technical Assistance to Agencies and Local Governments

→ Peer-to-Peer with the Netherlands

→ Bicycle Pedestrian Advisory Committee (BPAC)



Transportation Alternatives Program (TAP)

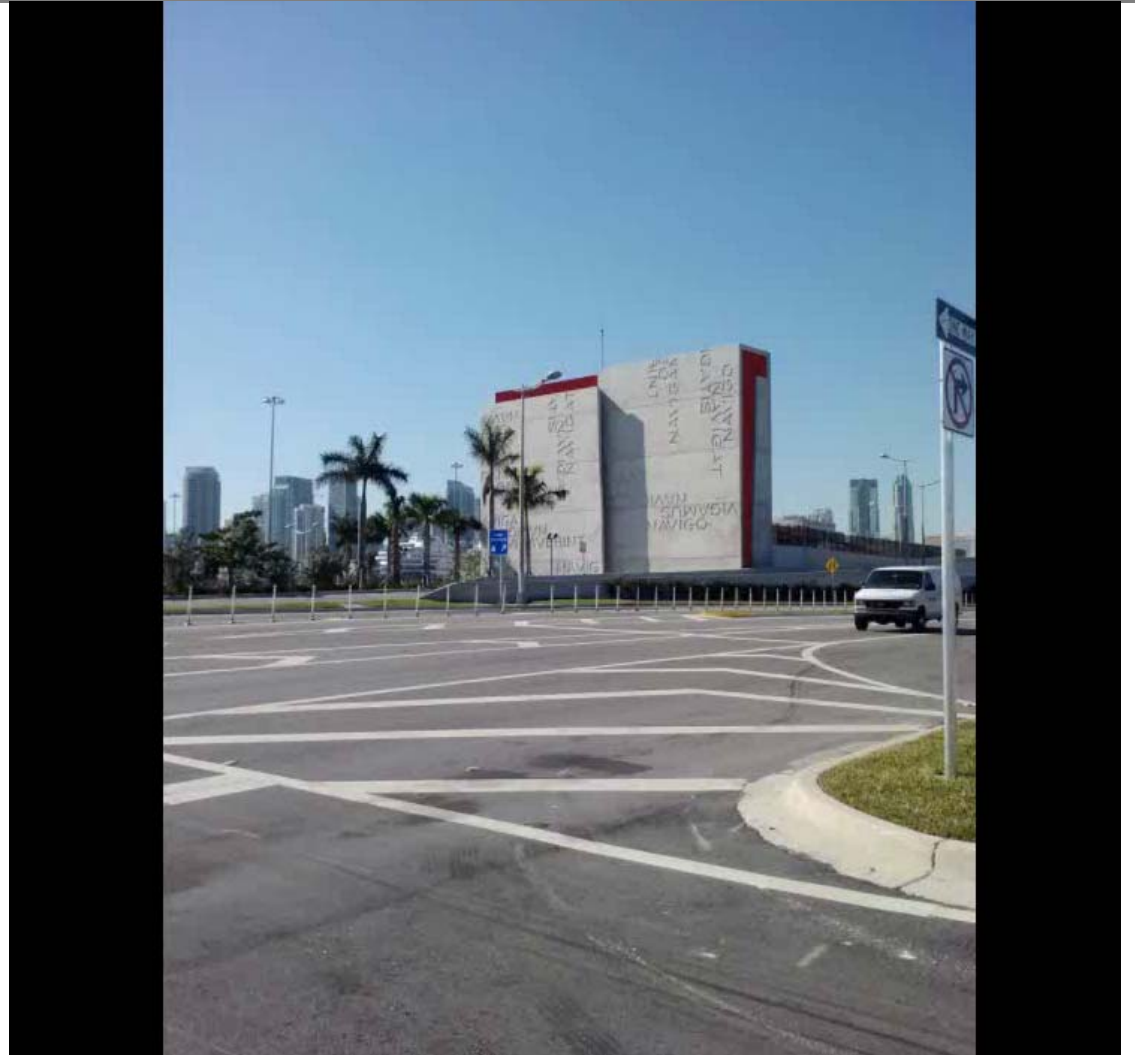
- Annual Application Cycle
- \$20M Programmed since 2011
- Review coordinated through
TPC Subcommittee & FDOT D6

Year	Projects	Total
2011	6	\$3.4 Million
2012	4	\$3.0 Million
2013	8	\$5.3 Million
2014	13	\$8.1 Million



Freight and Logistics

- Freight Transportation Advisory Committee (FTAC)
- Truck Parking Facilities Study (Phases I & II)
- Miami-Dade County Freight Plan
- Regional Freight Plan



Tools

- InteracTIP
- LRTP Interactive Project Tool
- Bicycle Knowledge Explorer (BiKE)
- Future Intermodal Centers & Transit Oriented Development (FIC-TOD) Database
- Transportation Outreach Planner
- Transportation Facts & Trends

Transportation Improvement Program
Fiscal Years 2014/2015 to 2018/2019

MIAMI-DADE LONG RANGE TRANSPORTATION PLAN
Interactive Project Tool

Search Projects by Type
Project Type: < any >
Search

MIAMI-DADE
BIKE INTERACTIVE BICYCLE TRIP PLANNING

MIAMI-DADE
MPO

Intermodal Center Locator Map

Transportation Outreach Planner
Home | Customized Demographic Reports | Community Background Reports | Public Outreach Strategies | Metadata

Project Information
The Federal Highway Administration (FHWA) September 2003 Certification Report recommended that the Miami-Dade Metropolitan Planning Organization (MPO) incorporate 'Sociocultural Effect' features in its planning process to ensure community values and concerns receive proper attention throughout the entire transportation development process. In response, the Miami-Dade MPO created the Community Characteristics Project (CCP) in order to review the social, economic, and geographic characteristics of an area before public involvement (PI) efforts are initiated. In 2010 the Broward and Palm Beach MPOs joined the program, and the CCP was renamed the "Transportation Outreach Planner".

2010 Census Demographic Reporting Tool
An Interactive Mapping and Reporting Tool
Now you can locate 2010 census data and 2009 American Community Survey (ACS) data by census block groups, census places, and neighborhoods for Broward, Miami Dade, and Palm Beach counties. Interactive graphs illustrating changes from 1990, 2000, and 2010 are just the tip of the iceberg.
[Explore it now!](#)
Note, the 2000 Census Demographic Reporting Tool has been archived.



Regional Coordination

→ Southeast Florida Transportation Council (SEFTC)

- ✓ Regional Transportation Technical Advisory Committee (RTTAC)
- ✓ RTTAC Modeling Subcommittee
- ✓ Regional Public Participation Subcommittee
- ✓ Regional Freight Subcommittee

→ 2040 Regional Transportation Plan (RTP)

→ Tri-Rail Coastal Link (TRCL) Project

→ FEC Quiet Zones

→ South Florida Vanpool Program



The screenshot shows the SEFTC website with a blue header. The logo consists of three overlapping circles in blue, green, and orange, followed by the text "SEFTC Southeast Florida Transportation Council". On the right, there is a "SIGN UP FOR EMAIL NOTIFICATIONS" section with a form for "FIRST/LAST*" and "EMAIL*" and a "SUBSCRIBE" button. Below the header is a navigation menu with links: "ABOUT SEFTC", "MEMBERS", "CONTACTS", "MEETINGS", "RESOLUTIONS", "COMMITTEES", "2040 REGIONAL PLAN", "REGIONAL INFO", and "LINKS". The main content area features a large image of a blue double-decker train (number 512) at a station platform. Below the image is a section titled "ABOUT SEFTC" with text: "As a result of the 2000 U.S. census, the Miami Urbanized Area encompasses parts of the Miami-Dade, Broward, and Palm Beach Counties. The Metropolitan Planning Organizations (MPO) for each respective County responded to the potential of consolidating into a single MPO by committing to develop and implement a...". To the right of this section is a "UPCOMING MEETINGS" section with a calendar icon and text: "SEFTC Meeting 2015-04-10 AT 10:00 am TBD" and a link "View the Agenda".



Modeling

- State-Of-The Art Activity Based Model (ABM)
- Southeast Florida Regional Planning Model (SERPM)

MTF Tri-Chairs

Wilson Fernandez

Transportation Systems Manager
Miami-Dade MPO
111 NW First Street, Suite 920
Miami, FL 33128
(305) 375-1886
wilson@miamidade.gov

Denise Bunnewith

Planning Director
North Florida Transportation Planning Organization
1022 Prudential Drive
Jacksonville, FL 32207
(904) 306-7510
dbunnewith@northfloridatpo.com

Danny Lamb

Modal Systems Planning Administrator
Systems Planning Office
Florida Department of Transportation, District 7
11201 N. Malcolm McKinley Drive
Tampa, FL 33612-6403
(813) 975-6116
daniel.lamb@dot.state.fl.us



Collaborating with our Transportation Partners

- Public Involvement Management Team (PIMT)
- LRTP Steering Committee
- TIP Development Committee
- Transportation Planning Technical Advisory Committee (TPTAC)
- Regional Transportation Technical Advisory Committee (RTTAC)



Major Event Participation

- “Bike305” Bike to Work Day
- Chinese Delegation Peer Exchange
- Commercial Industrial Association of South Florida
- Consortium for a Healthier Miami-Dade
- FHWA Climate Change Mitigation Peer Exchange
- Peer Exchange on Freight Movement and Megaregions
- Reconnecting America’s Peer Exchange
- Safe Routes to School (SRTS) National Conference
- Southeast Freight Conference
- Southeast Regional Bike Safety Summit
- Sustainable Travel Demand Strategies and Scenarios
- Travel Demand Modeling Peer Exchange
- Urban Land Institute (ULI) Regional Event



Awards

- Award of Excellence, Best Plan Category “Miami-Dade 2040 Long Range Transportation Plan”, APA Florida Gold Coast Section, 2014
- Outstanding Coordinating Board of the Year Award, “Miami-Dade County LCB”, The Florida Commission for the Transportation Disadvantaged, 2013
- Leadership and Commitment Award, Consortium for a Healthier Miami-Dade, 2013
- Award of Excellence, Public Outreach Category “Transportation Outreach Planner”, APA Florida Gold Coast Section, 2011
- Award of Merit, Best Plan Category “Bicycle/Pedestrian Mobility Plan for the DDA”, APA Florida Gold Coast Section, 2011





The Future Awaits

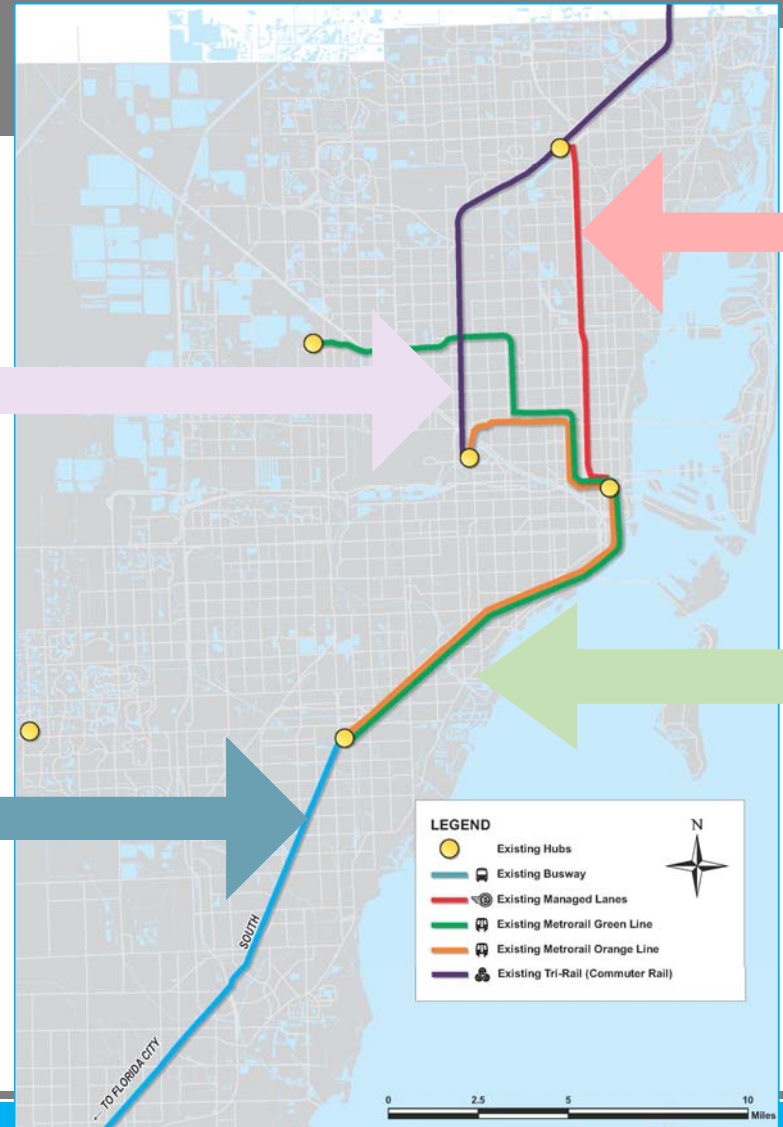
What now?



The MPO's Future Path



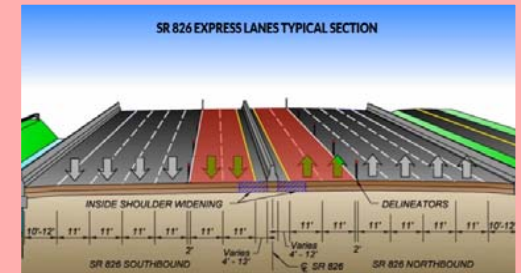
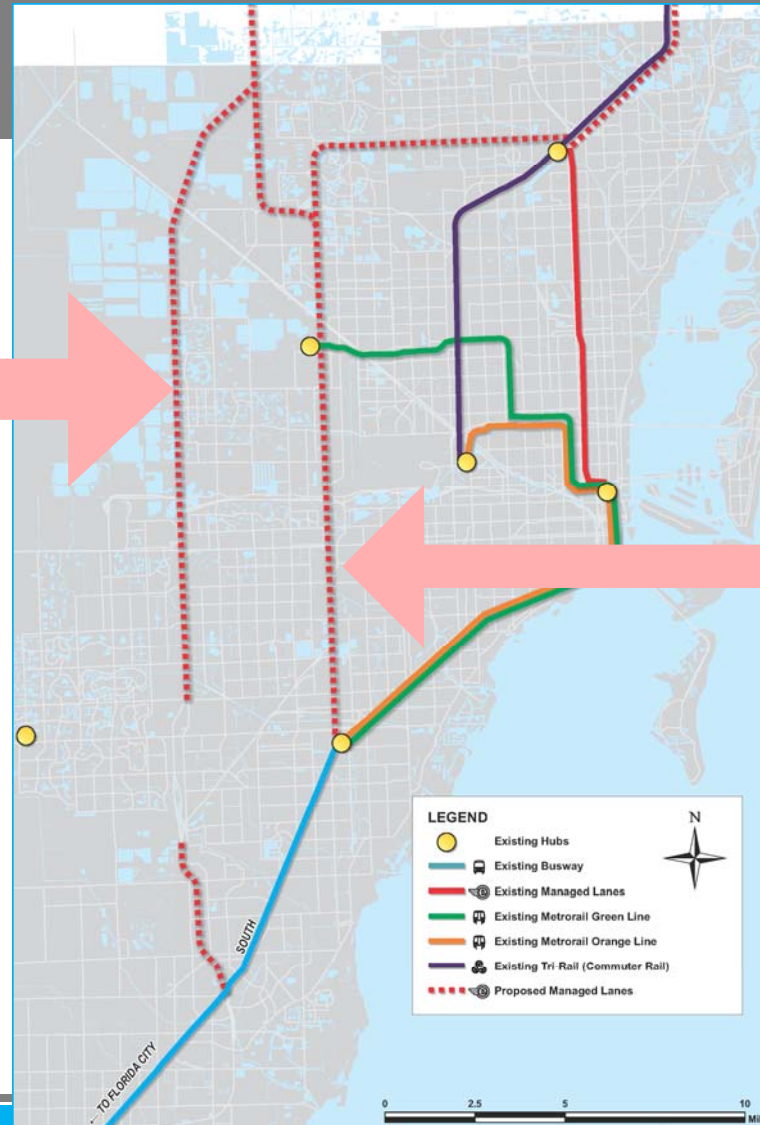
Miami-Dade County Current System



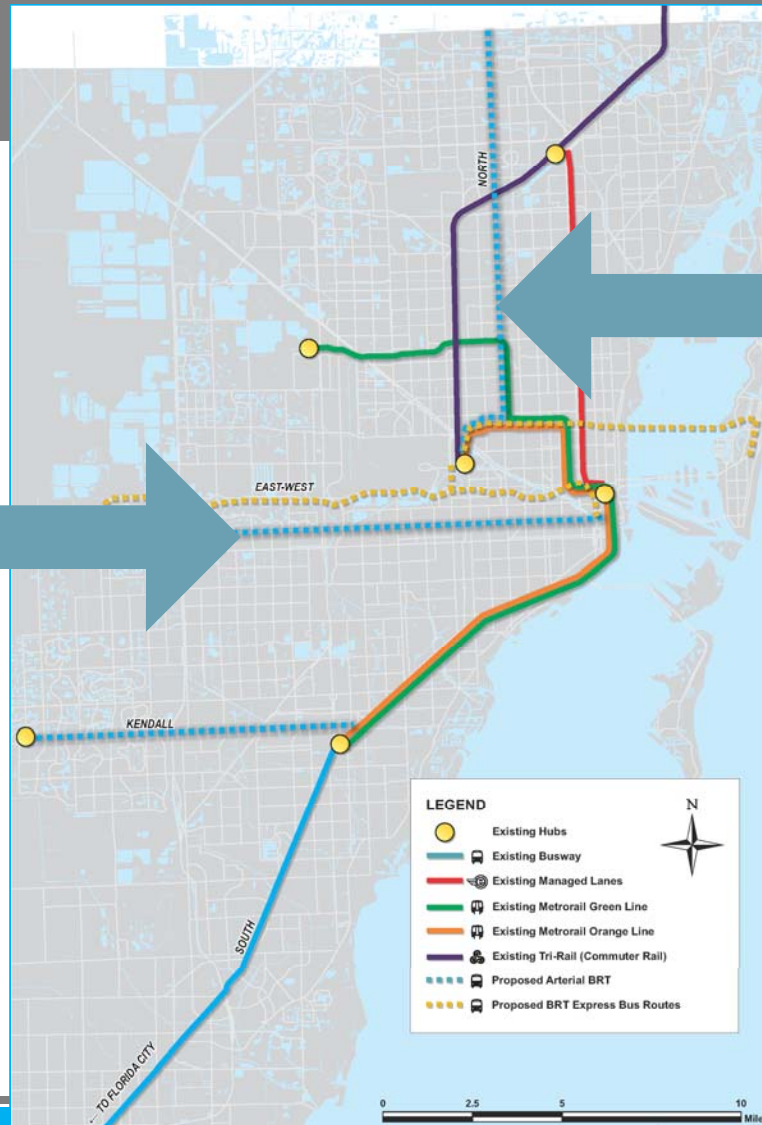
Miami-Dade County Future Managed Lanes

Express Lane Service in Miami-Dade

- Caribbean Blvd. (Dixie Hwy/ US-1) to SR 874
 - 5 miles
 - 1 new express lane/direction
- Kendall to SR 836
 - 6 miles
 - 2 new express lanes/direction
- Use flexible delineators for lane separation



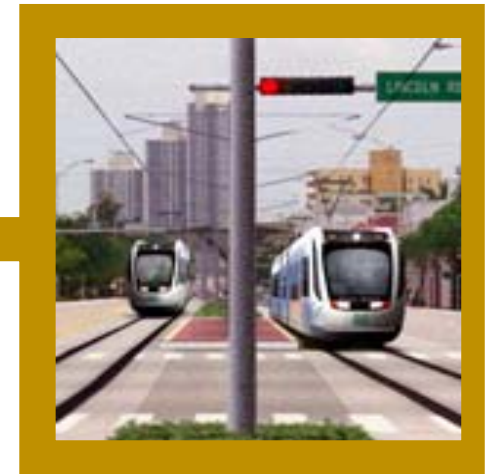
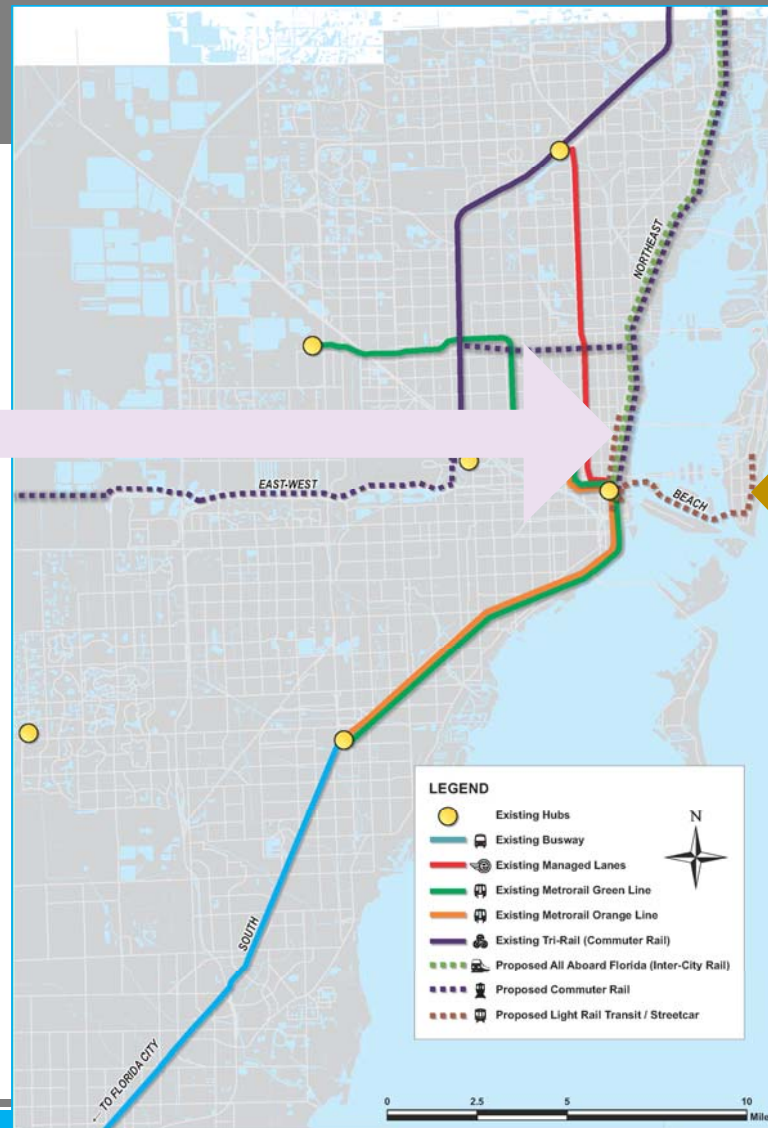
Miami-Dade County Future Bus Rapid Transit



Bus Rapid Transit



Miami-Dade County Future Rail



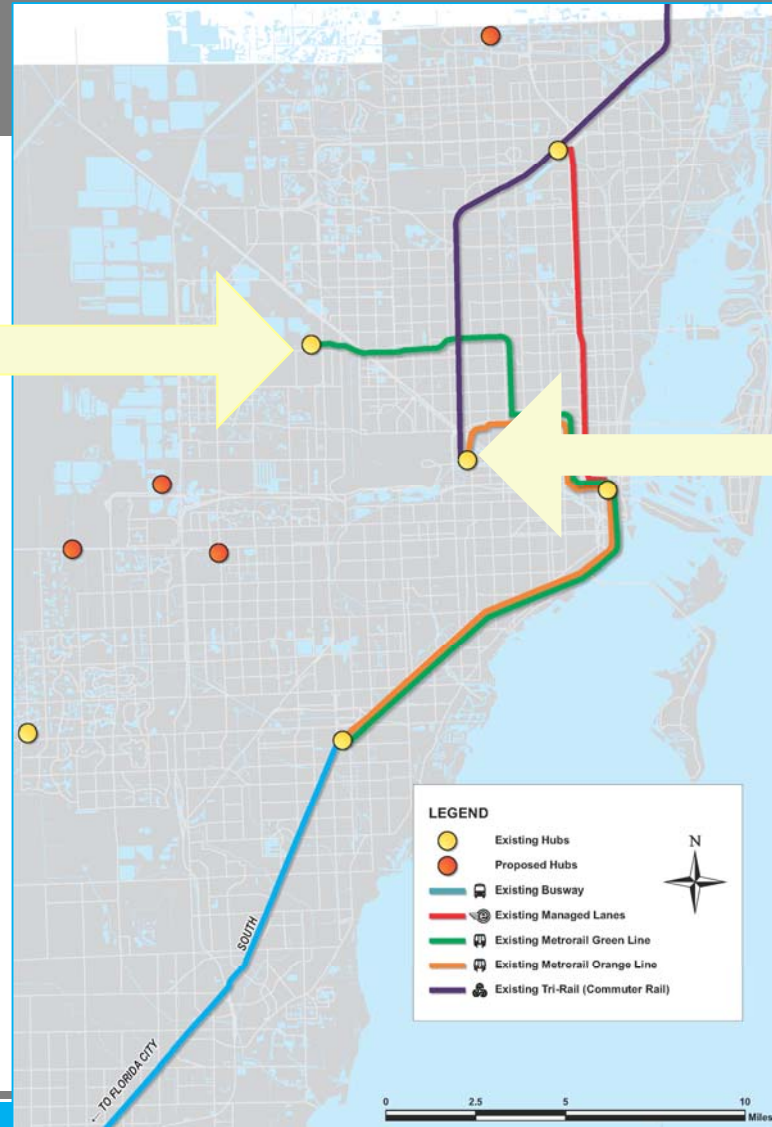
All Aboard Florida



Beach Corridor (Bay Link)



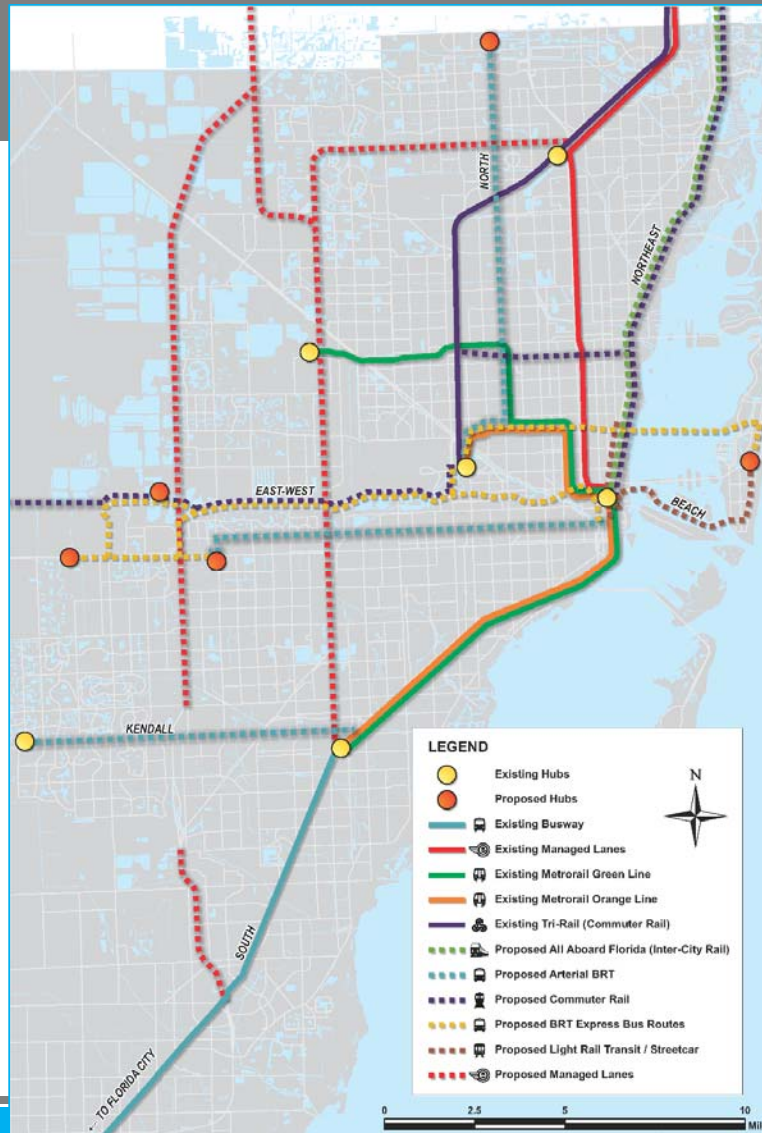
Miami-Dade County Future Hubs



Palmetto Station Hub



Miami-Dade County The Future...



THANK YOU!

